



C-Scape
14-15 January 2014 | Bedfont Lakes, UK

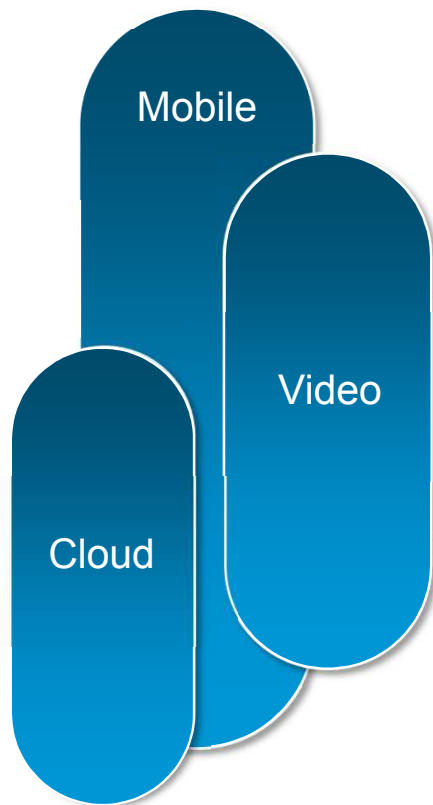
Mobile Strategy Update

Jim Scott
Managing Director, SP Mobility, EMEAR

15 January 2014

Cisco's Service Provider Approach

Next Generation Internet Drivers



Small Cell
Everywhere

2 years
of video
every second

19 Billion
devices

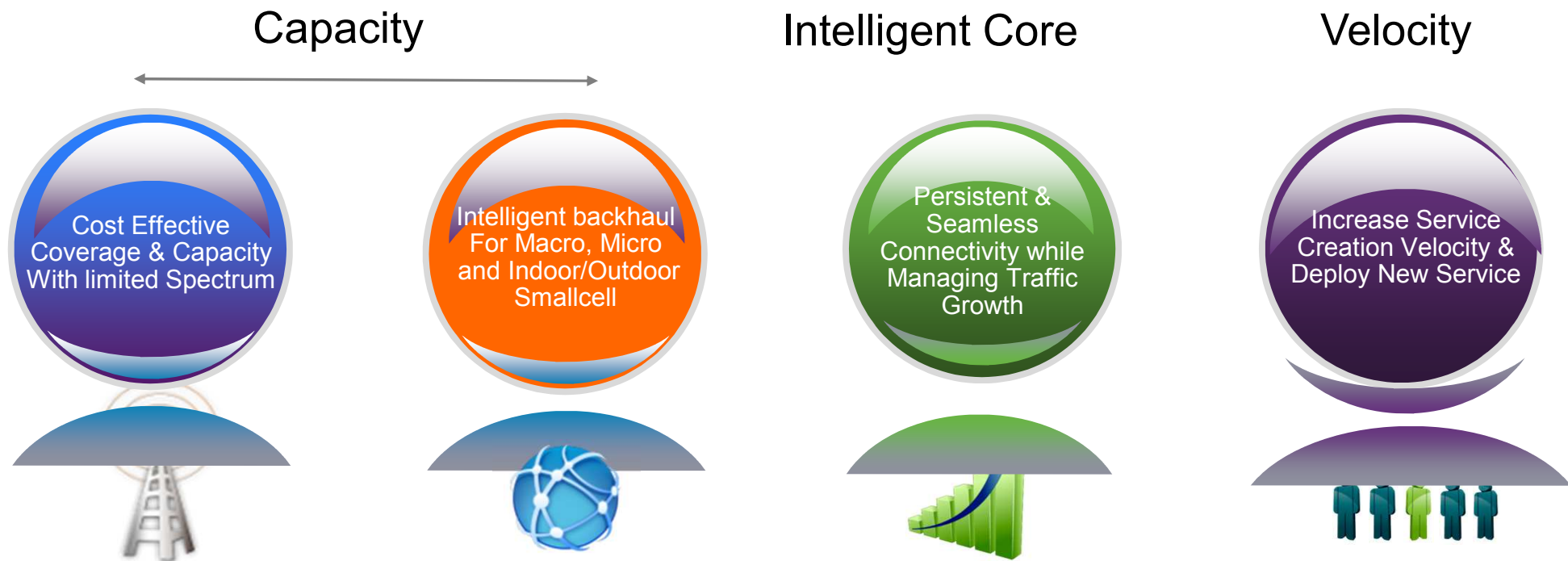
Changing
Business
Models

100G
and beyond

4G/LTE
Emergence

62%
workloads in cloud

Mobility Opportunities & Challenges



SP Mobility Customer Announcements - 2013



First to market with 4G LTE in France and over 300,000 3G small cells.
EPC for 4G + unified management of 2G & 3G. ASR5K + ASR901/903. 20 million mobile subs



ASR5000 - EPC for 4G + unified management of 2G & 3G



Czech Republic. ASR5000 - EPC for 4G + unified management of 2G & 3G



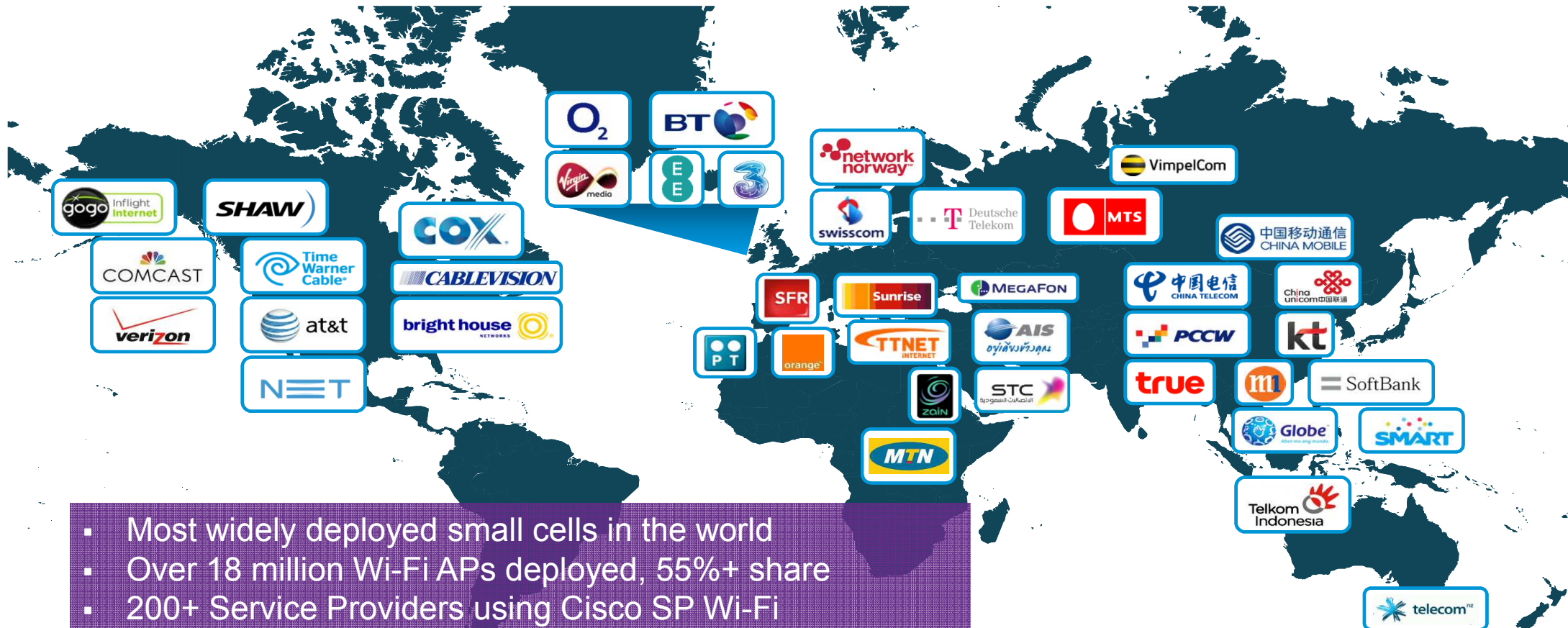
TURKCELL

ASR5000 – EPC, 35 million subs



Managed service for Cisco Universal Small Cells. 100% Cisco
Enterprise wi-fi compatible
Cost effective solution for smaller operators and MVNOs

Small Cell: Built on Unrivalled Expertise



- Most widely deployed small cells in the world
- Over 18 million Wi-Fi APs deployed, 55%+ share
- 200+ Service Providers using Cisco SP Wi-Fi
- Over 2 million Licensed Small Cells deployed

Mobile Backhaul Customer Engagements



- #1 in Mobile IP Infrastructure with 42% Market Share, Up 4.1% Y-Y

Cisco's Mobile Packet Core Market Leadership

Over 300 Operators In More Than 75 Countries

1B Subscribers Across Mobile Packet Cores

Cisco Mobile Packet Core Powers
~50% Of Worldwide LTE Connections

56 LTE Wins In 33 Countries

#1 EPC Market Share / #1 MPC Market Share

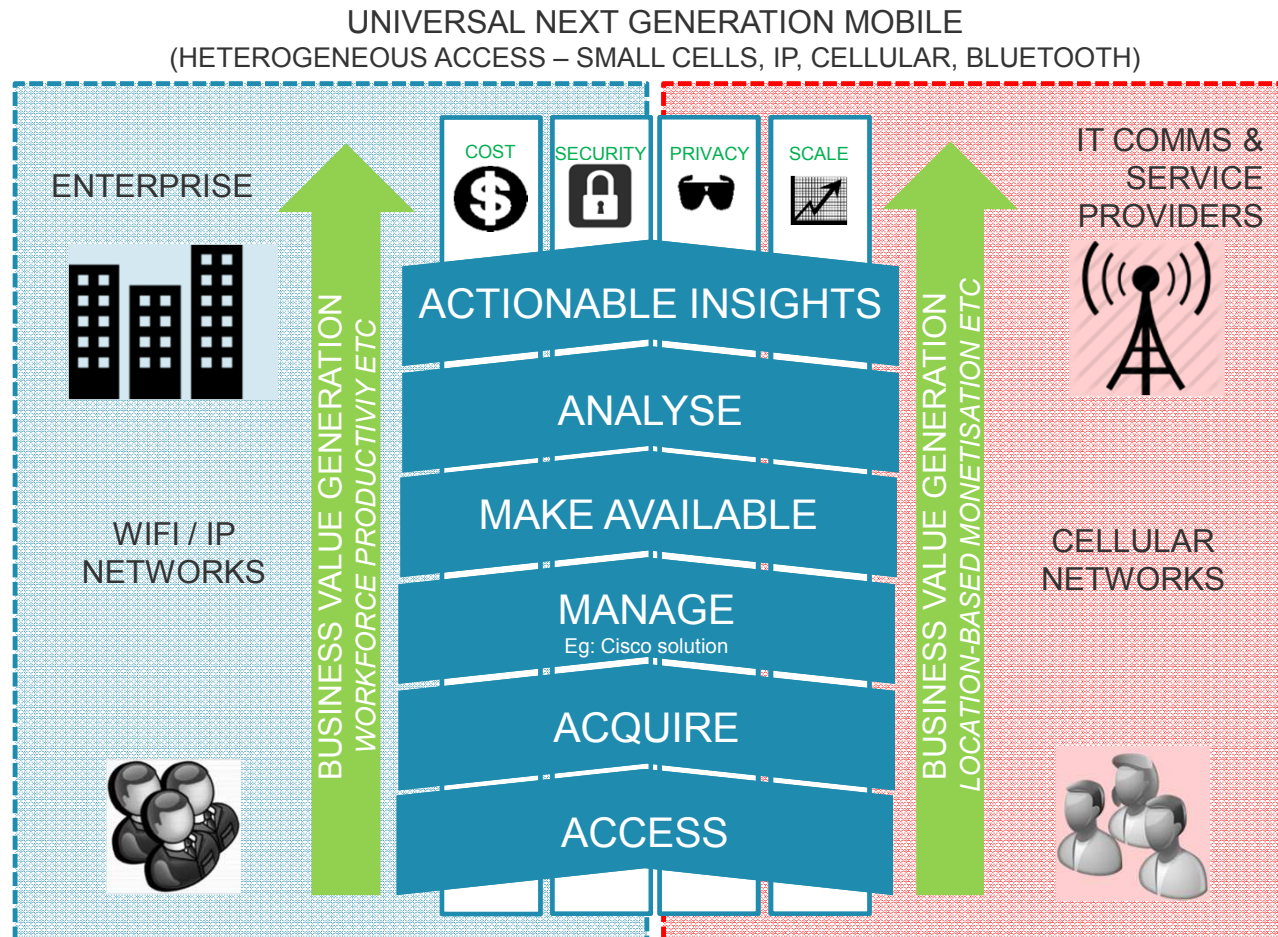
World's First Commercially-Deployed LTE Small Cell Gateway
(KT/Korea)



Winner of 2013 Best LTE Core Network Award



Cisco Enterprise Mobility Value Chain Model



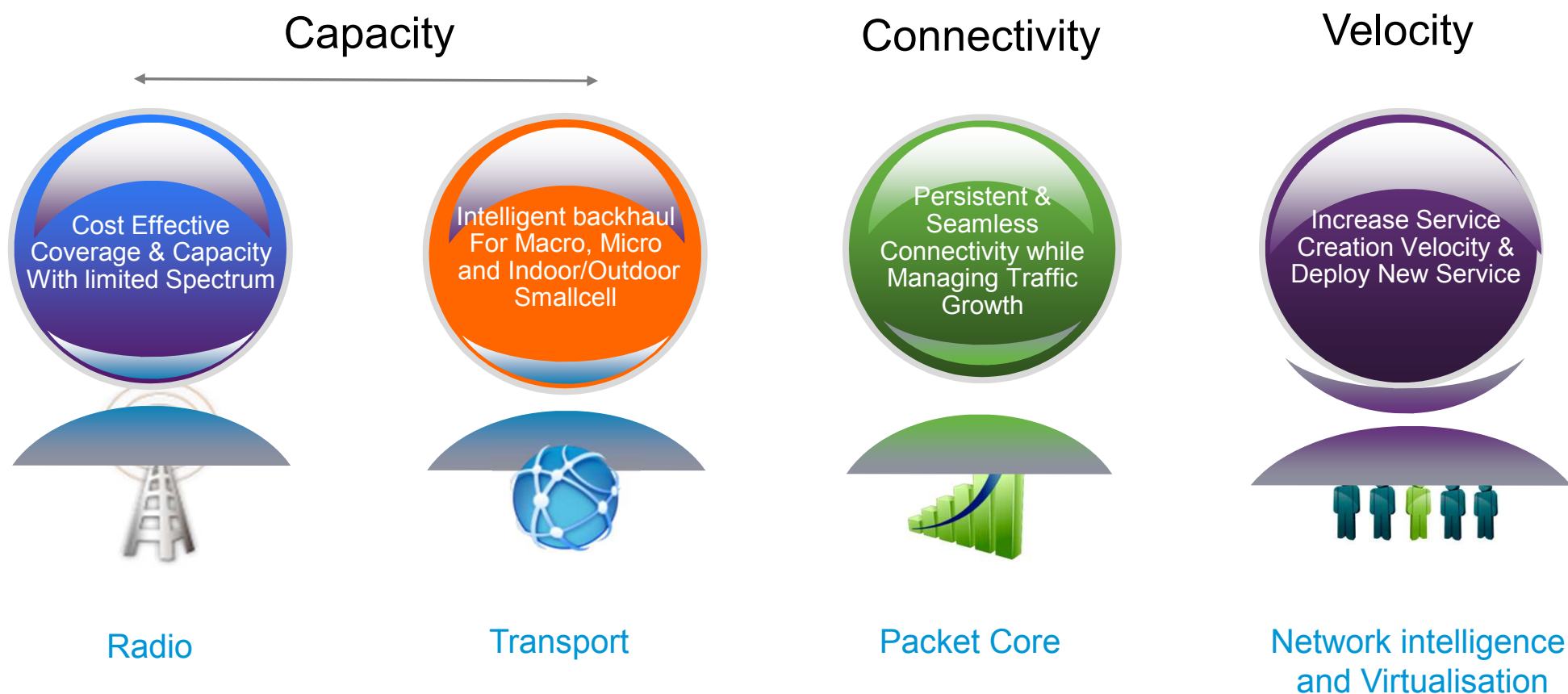
Cisco strategy for Service Provider Mobility

Adam MacHale amachale@cisco.com

EMEAR Mobility Architect

Distinguished Systems Engineer

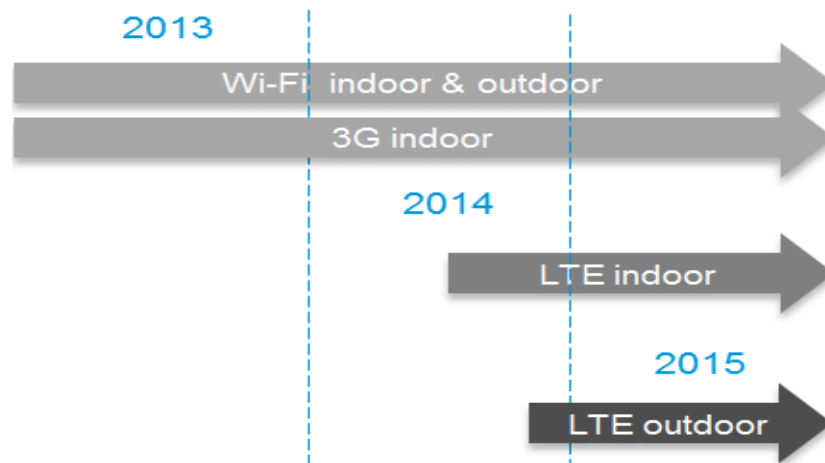
Cisco mobile end to end strategy



Cisco Radio strategy



- Build on Wi-Fi installed base for Enterprise and Hotspot along with enabling mobility (HS2.0 Passpoint) and network selection (ANDSF).
- Converged radio solutions Wi-Fi + 3G and later 3G + LTE and Wi-Fi + LTE.
- Avoid increasing rental, power and backhaul expenses by building on existing infrastructure. Enterprise integration to allow successful operations in a mixed SP/Ent environment.
- Multi vendor SON to manage and Optimize heterogeneous radio network with limited and expensive spectrum in 3G, LTE and Wi-Fi.



3G module 100mW 16 user
Wi-Fi access point 801.11ac

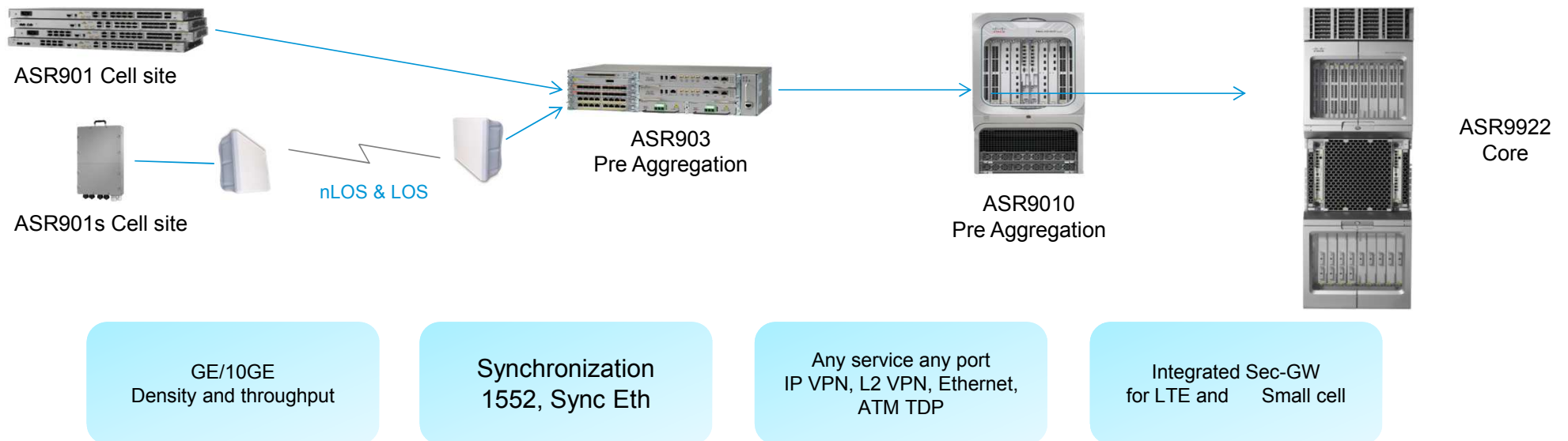


LTE 32 call 2x250mW
3G 16 call 100mW

Cisco Transport strategy



- Converged core transport for Fixed and Mobile with close optical integration and enhanced traffic management
- MPLS enabled RAN backhaul providing multiservice transport and service innovation for TDM, ATM and IP VPN
- Service integration and ready for LTE-A with integrated Security GW, synchronization and low latency.



Cisco packet core strategy



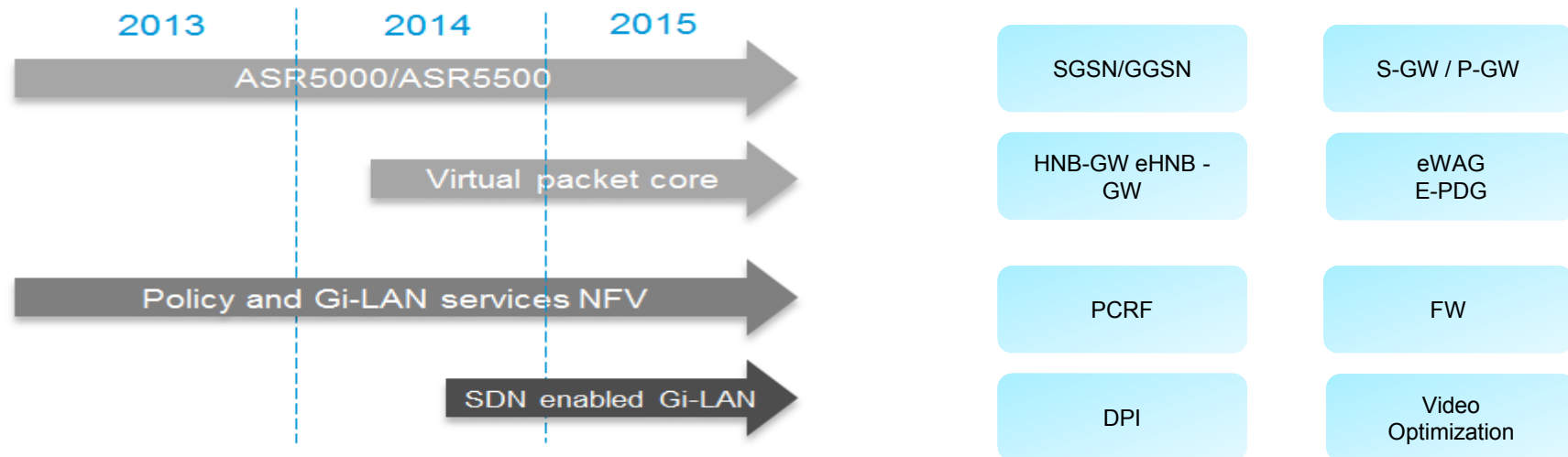
- All Cisco packet core gateways built on the same STAR-OS software.
- Scalable HW to provide performance and flexible growth, only adding capacity as required.
- Flexible use of resources depending on demand automatically allocated across throughput, sessions or transactions.



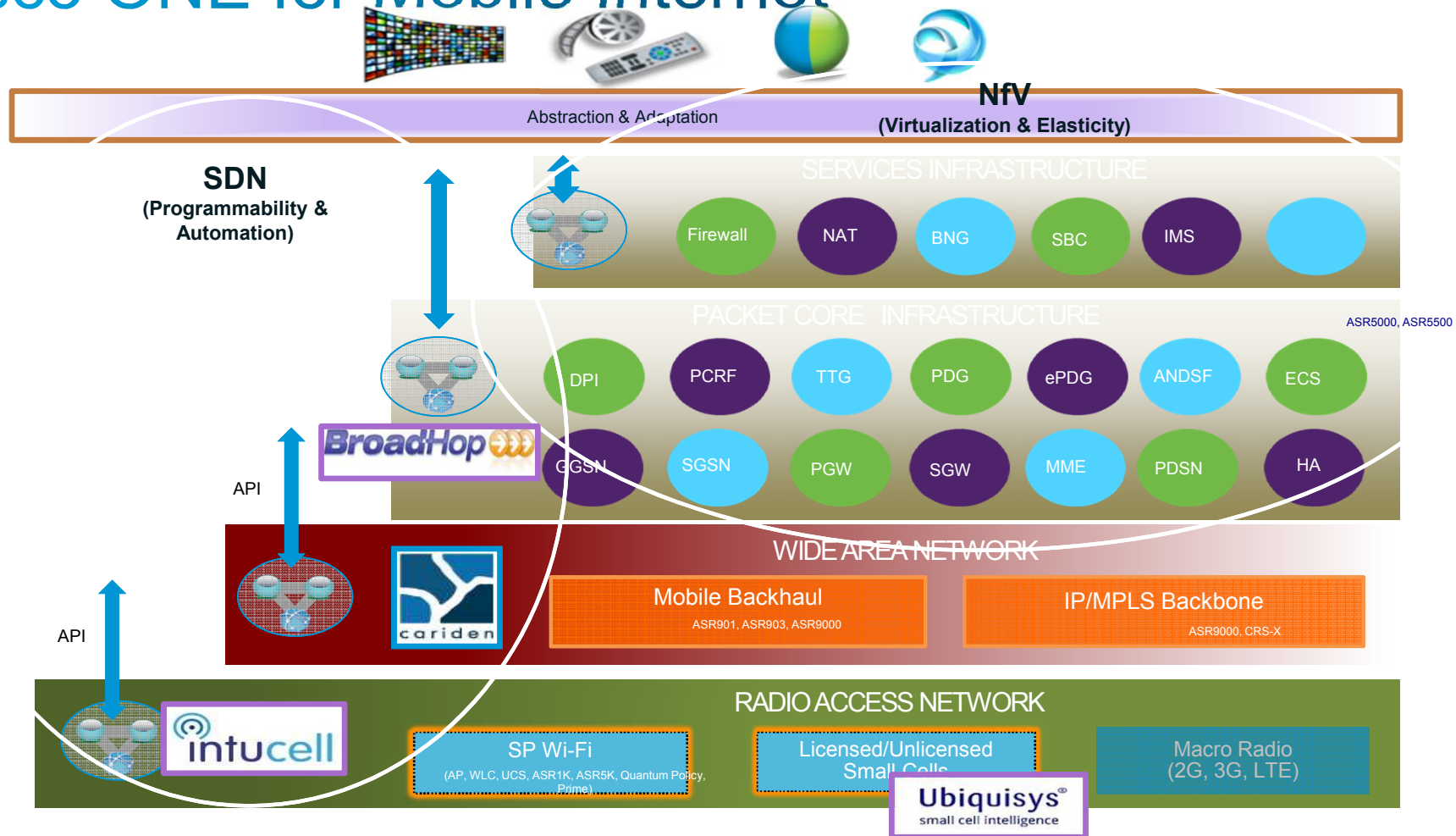
Cisco enabling service velocity with NFV



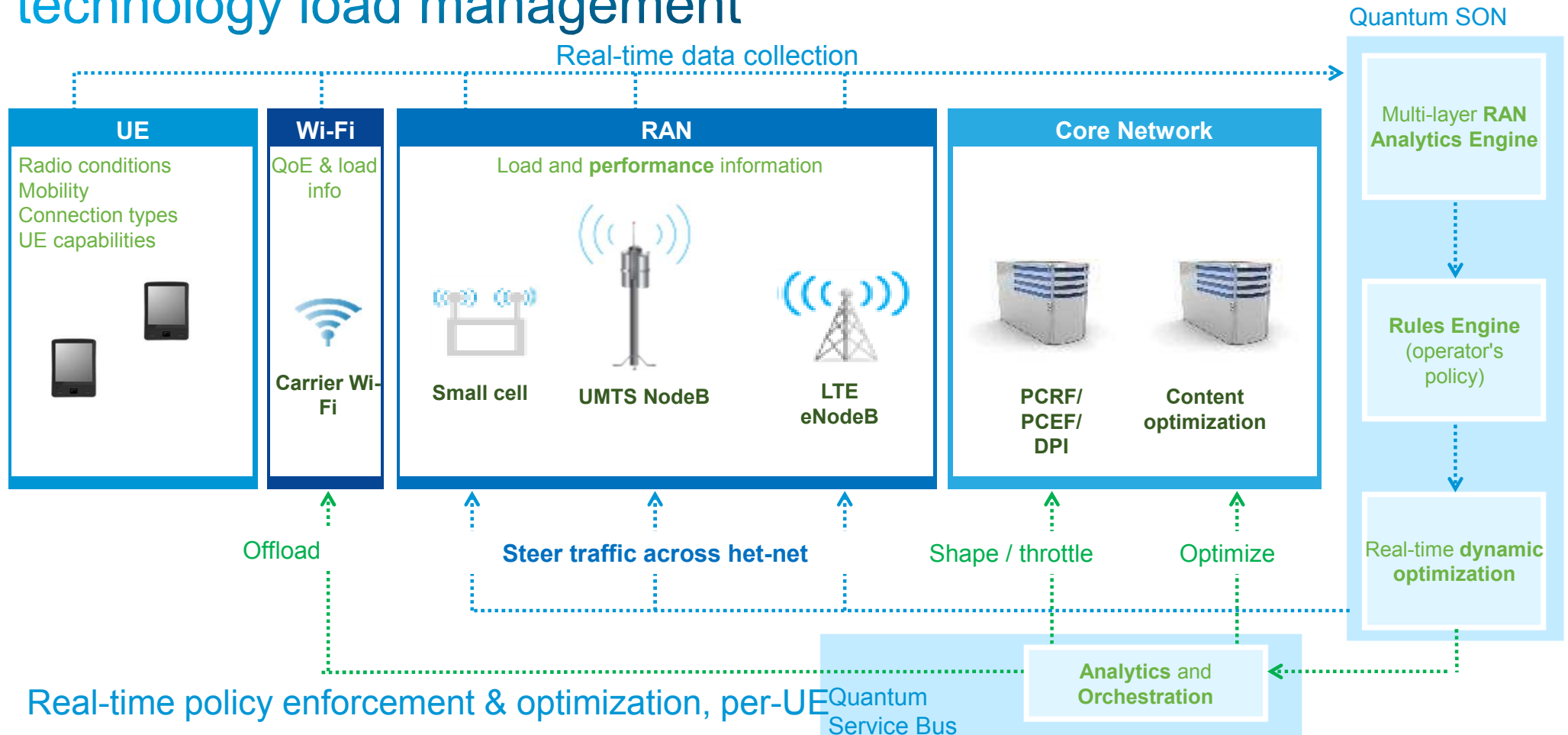
- Programmable for ease of creating and deploying new services/applications
- Elasticity to improve efficiencies as well as handle volatility
- Automate different parts of the network to speed up the ability to react to changing conditions
- Resiliency for improved availability and security



Cisco ONE for Mobile Internet



RAN Aware Optimization as part of multi-layer multi-technology load management



C-Scape

14-15 January 2014 | Bedfont Lakes, UK

Questions

