



Cisco Connected Grid: Home Energy Management



Larry O'Connell
Product Line Manager
Prosumer Business Unit

Cisco Smart Grid Vision – Connected Grid

Transform energy production, distribution and consumption using an end-to-end IP Platform to sustainably meet the world's future energy needs



- Architect end-to-end IP-based communications platform integrated with the power grid from generation to consumption
- Converge utility systems and processes across all key elements of the grid to increase grid intelligence and efficiency
- Deliver increased grid reliability, resiliency, power quality and security
- Enable the Smart Grid to become a platform for energy service innovation

June Announcement: Home Energy Management Solution

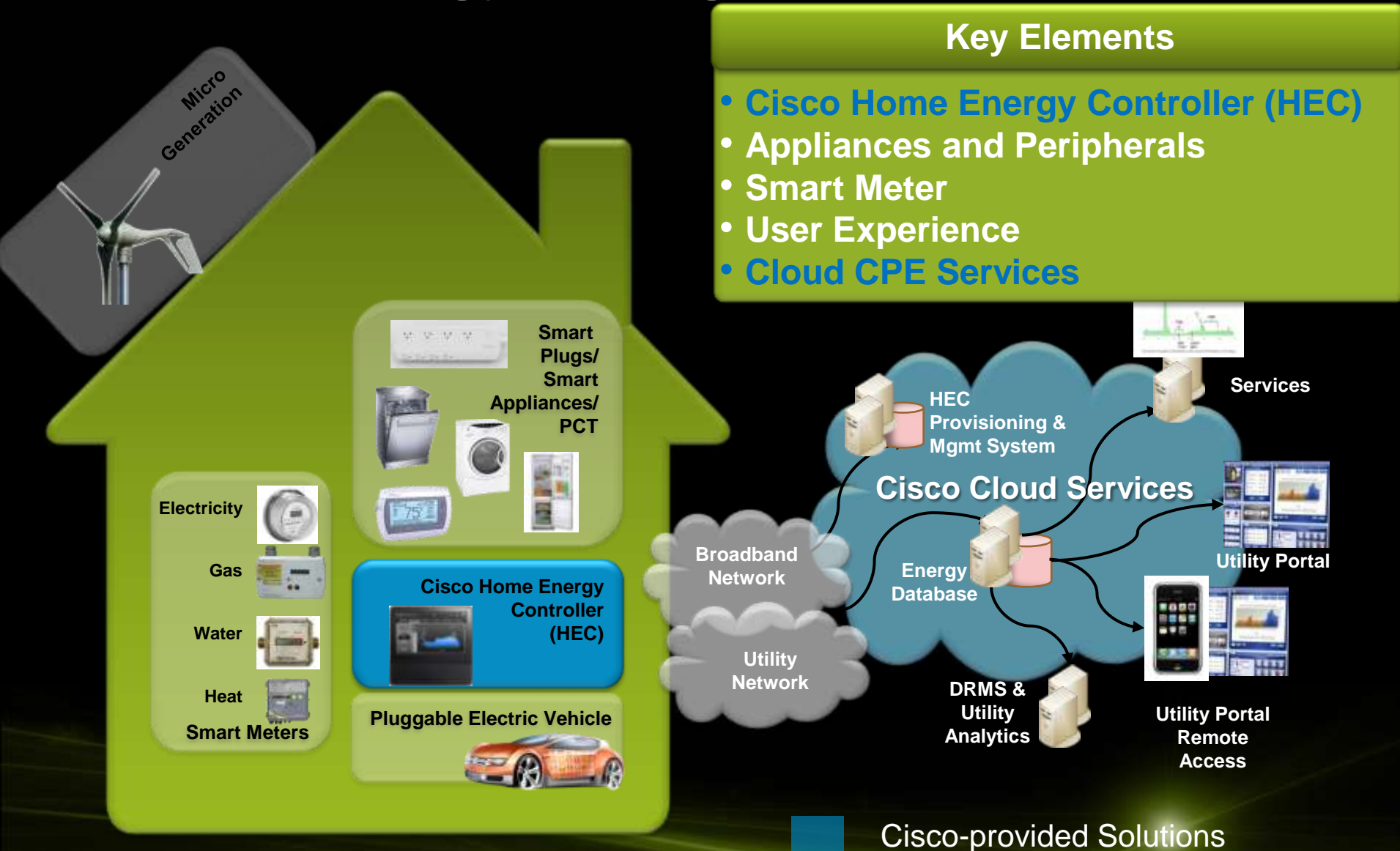
Home Energy Controller

- Touch Screen Display with network interfaces
- Energy Management Software for monitoring and control

Energy Management Services

- Hosted software for provisioning and management, data storage and 3rd party interface

Home Energy Management



Cisco Home Energy Controller

Home Energy Management Solution



LCD Display

- Capacitive-touch
- Active matrix LCD panel
- Glass surface
- 800×480 24-bit WVGA resolution
- Full color with backlighting

Memory

- 1-2 GB Flash memory
- 512 MB DRAM

CPU

- 1.1 GHz Hyperthreaded Atom

Peripheral Connectors

- USB 2.0 host port

Design Elements

- Thin chassis
- Thin bezel
- High-quality construction

Network Connections

- 10/100/1000 Mbps ethernet
- Wifi, Zigbee, ERT radio interface
- 802.11b/g/n Wi-Fi with WMM Quality of Service support



Cisco Energy Management Services

Home Energy Management Solution

Management and Provisioning

- Registration of consumer device
- Custom Builds for Groups of devices
- Firmware/Software push to devices
- Ongoing Heartbeat messaging with devices

3rd party interface

- Open API's for integration with utility back end and 3rd party software (ex DR analytics, Utility Portals, etc)

Home Energy Management

Consumer Energy Monitoring Functions

Energy Consumption and Cost Monitoring

- Real Time Energy Consumption
- Historical Energy Consumption
- Individual Appliance Energy Consumption



Appliance Monitoring and Control

- Control HVAC System via PCT
- Control Smart Appliances & Smart Plugs
- Scheduling mode (Day/night/away)
- Scene mode (home/away/vacation/etc)



Consumer Portal

- Predicted Energy Costs
- Peer Group Energy Comparisons
- Energy Savings Tips
- Remote Access User interface and Device information



Home Energy Management

Utility Monitoring Functions

Cloud-Based Management Environment

- Device Configuration
- Remote Management of Device (software upgrades)
- Analytics Engine
- Point of Integration with Utility Back End Systems

Demand Response and Demand Side Management

- Receive and React to Utility DR requests
- DR Mode Profile
- DR Over-ride

Price based Demand Side Management

- Receive Utility Price Signals
- React to a Utility Pricing Event



Ecosystem Strategy

Peripherals

- 3rd party device qualification
- Thermostat, Load Control Module, Smart Plugs, Range Extenders, etc

Cloud Services

- Open API's for 3rd party interface
- DRMS, Billing, etc

Utility Trials



100 home pilot in NC and OH
Variety of Pricing and Incentives
Smart peripheral integration
Summer 2010



Cisco Connected Grid Solutions

High Reliability and Security

Operations Center



- Grid sensing and observability
- Data analytics and correlation across grid
- Increased transparency, controllability of the grid
- Wider participation in market operations

Data Center



- Data storage
- Regulatory compliance
- Data management
- Data analytics

Utility and Regional network



- Inter-utility network
- Intra-utility network
- Wide area measurement and control
- Integrated security
- Common management platform

Transmission and Substation Network



- Remote asset management and monitoring
- Conditions-based predictive maintenance and planning
- Optimize asset utilization
- Cyber/physical security
- High reliability

Field Area Network



- Scalability for smart meter deployments
- Flexible access for mesh, PLC, broadband, Wi-Fi
- Interoperability and control

Premise Area (HAN/BAN)



- Visibility—optimize energy usage
- Demand—Response
- Reduce cost
- Micro—generation (solar, wind) management
- Policy-based management

Cisco Connected Grid

Home Energy Management Solutions



A Simple, Multifunction Tool that Optimizes Energy Use

- **Lowers Energy Bills**
 - Supports Demand-Response
 - Supports Time-Based Pricing
 - Scheduling Mode Day/Night/Away
 - Scene Mode Home/Away/Vacation
- **Easy to Use**
 - Intuitive Interface
 - Touch Screen Controls
- **Multifunctional**
 - Control HVAC System
 - Control Smart Plugs & Appliances
 - Supports Many Apps
- **Provides Visibility**
 - Real Time Energy Use
 - Historical Energy Use
 - Individual Appliance Energy Consumption

