



# Cisco Router Security Solutions



# Today's Security Concerns



## Collaboration and Communication

- TelePresence / Video / IM / Email
- Mobility
- Web 2.0 / Web Services / SOA



## The New Threat Environment

- The Eroding Perimeter
- Spam / Malware / Profit-Driven Hacking
- Data Loss and Theft



## The Business Impact of Security

- IT Risk Management
- Regulatory Compliance
- Security as Business Enabler

# The Branch Transformation

## Today's Branch



**Aging, Disparate Data/  
Voice Networks**



**Saturated WAN,  
Poor Response Time**



**Blended Security  
Threats, Compliance**



**Limited Mobility, Limited  
Disaster Recovery**



**Inconsistent Branches  
and Branch-HQ solutions**

## Empowered Branch

**Unified Voice/Data/Video  
Network Platform**

**Optimized WAN,  
Accelerated Applications**

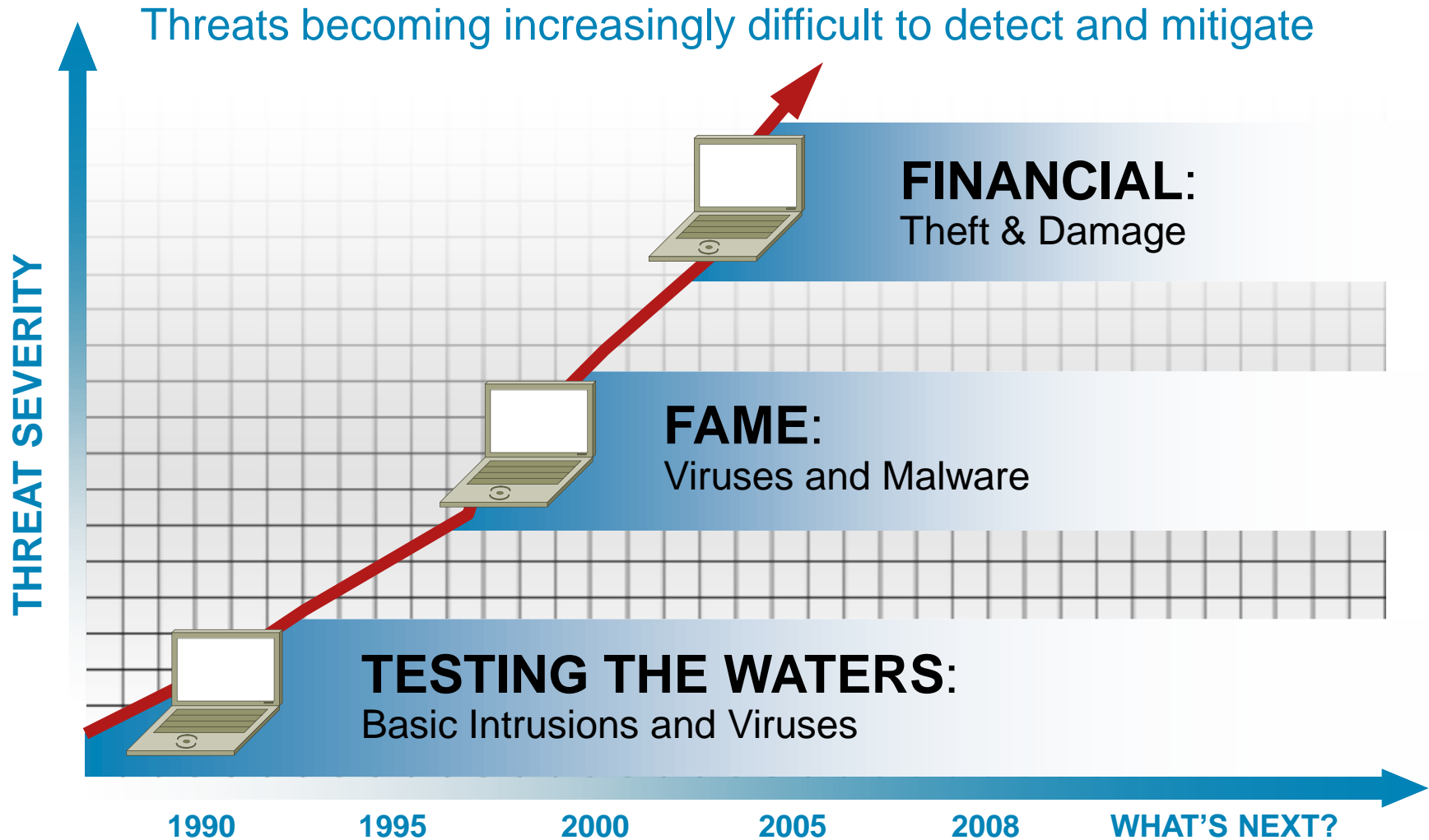
**Self-Defending Networks**

**High Availability, Unified  
Wireless—Wireline Business**

**Consistent Branches  
and Branch-HQ Services**

# The Evolution of Intent

## From Hobbyists to Professionals



# Cisco Self-Defending Network Solutions for Business Security

## System Management

Policy—Reputation—Identity

Application Security

Content Security

Network Security

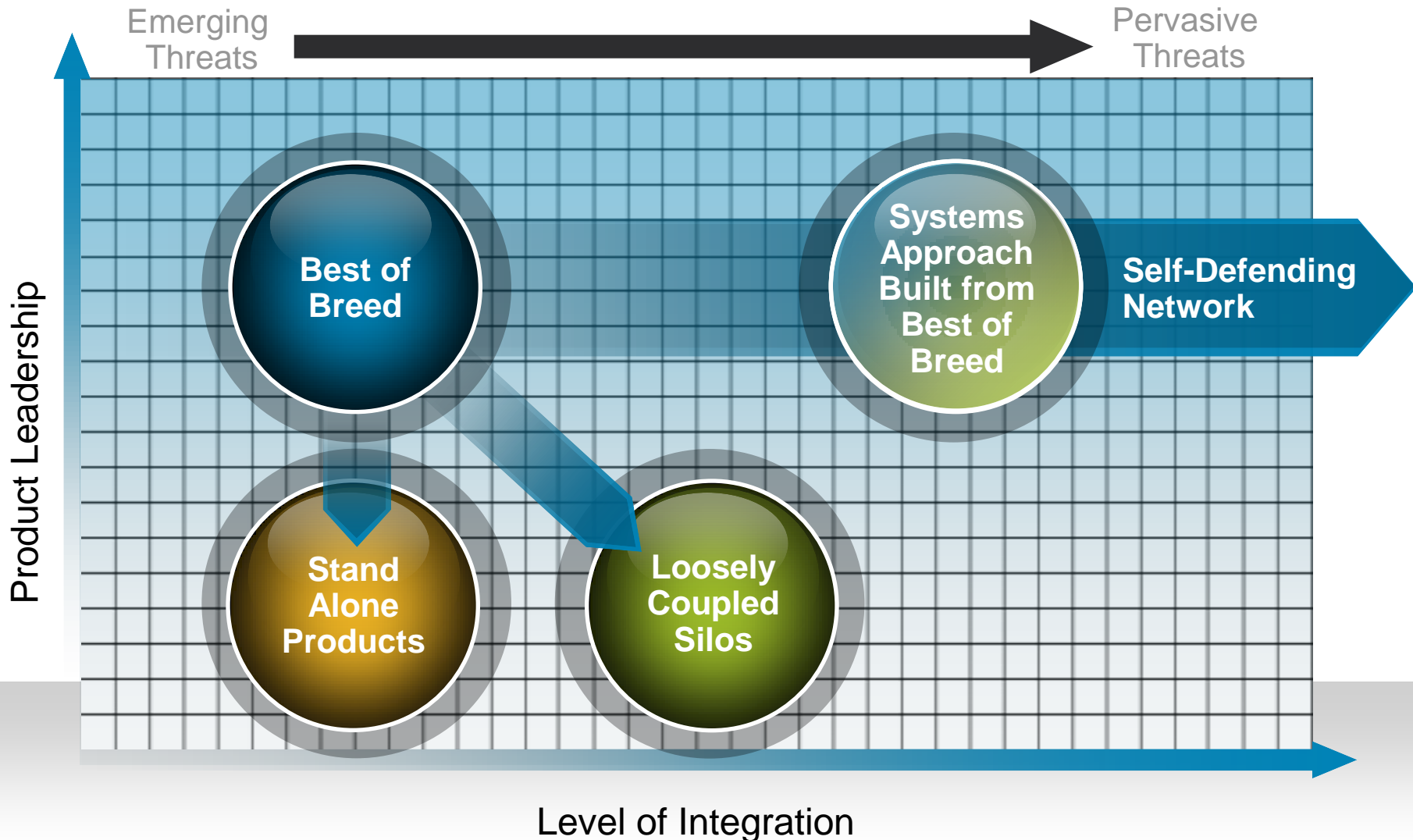
Endpoint Security

**Cisco Self-Defending Network:**

**Best of Breed Security in a  
Systems Approach**

- Enforce business policies and protect critical assets
- Decrease IT administrative burden and reduce TCO
- Reduce security and compliance IT risk

# Systems Approach Built from a Leadership Product Portfolio



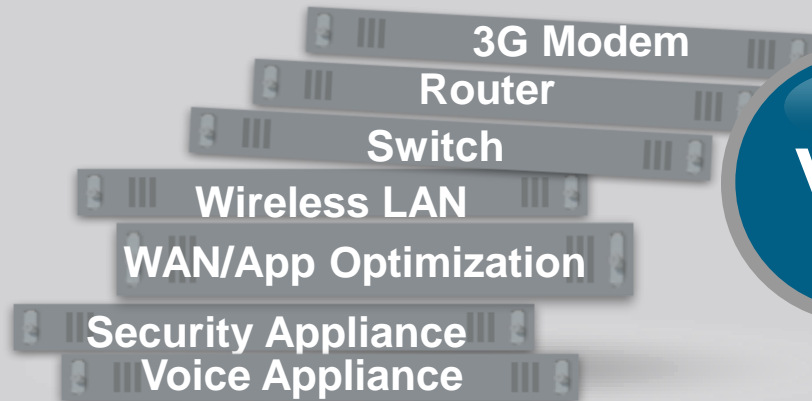
“Cisco has developed a vision and strategy for a **network security platform** that places their customers on a journey. Cisco promises that the security posture of this company will improve as they move through this journey.”

Nick Lippis

Special Edition Lippis Report: Network Security 2.0: A Systems Approach to Threat Mitigation Emerges

# Market Acceptance: Reaching 5 Million

## Overlay Appliances



VS.

## Integrated Services Router

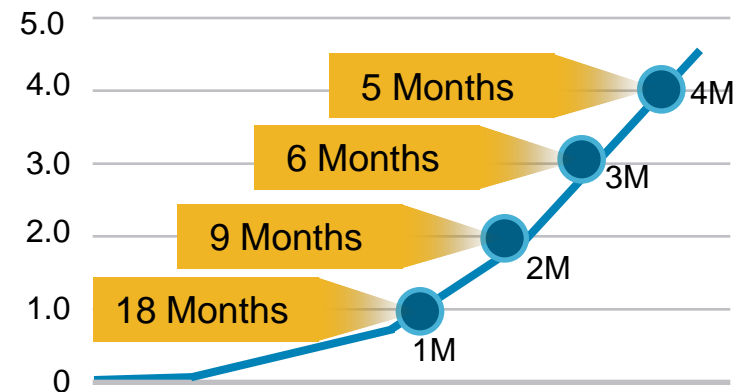


**Cisco ISR 3845**

**With Voice, Wireless, Video,  
WAN Optimization, Switch**

- 4 Millionth ISR at Coke-Cola Enterprises
- UC, data, video to 30,000 CCE employees
- Greater employee collaboration
- Business innovation

Millions of Routers Sold





# Cisco Router Security Portfolio

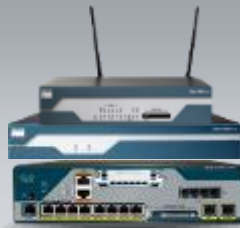
Performance and Services Density

**Service Integration  
Scaled to Fit Every Size Branch Office**

800 Series



1800 Series



2800 Series



3200 Series



Rugged and  
Mobile  
Applications

3800 Series



High  
Density and  
Performance for  
Concurrent  
Services

Embedded, Advanced Voice, Video,  
Data, and Security Services

Embedded Wireless, Security, and Data

Small Office and  
Teleworker

Small Branch

Medium  
Branch

Mobile/Rugged  
Branch

Medium to  
Large Branch

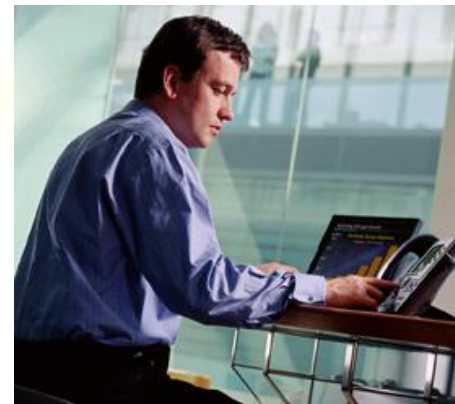
# Cisco Router Security

## Leadership in Innovation

Industry  
First

### Cisco Integrated Services Router Innovations in Security

- Industry-leading integration of VPN, routing, and QoS: DMVPN, GET VPN, SSL VPN, and Easy VPN
- Router-embedded security services: Application firewall, IPS, and URL filtering
- Cisco® Router and Cisco Configuration Professional (CCP) with one-touch lockdown and security audit
- Router-integrated voice and security
- Router-integrated wireless with advanced security
- Router-integrated switching; Layer 2/3 security
- Secure WAN backup over DSL, cable, 3G, or satellite



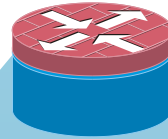
# Cisco Router Security Certifications

	FIPS	Common Criteria	
	140-2, Level 2	IPSec (EAL4)	Firewall (EAL4)
Cisco® 870 ISR	✓	✓	✓
Cisco 1800 ISR	✓	✓	✓
Cisco 2800 ISR	✓	✓	✓
Cisco 3800 ISR	✓	✓	✓
Cisco 7200 VAM2+	✓	✓	✓
Cisco 7200 VSA	✓	✓	---
Cisco 7301 VAM2+	✓	✓	✓
Cisco 7600 IPSec VPN SPA	✓	✓	---
Catalyst 6500 IPSec VPN SPA	✓	✓	---
Cisco 7600	✓	✓	✓



[cisco.com/go/securitycert](https://cisco.com/go/securitycert)

# Only Cisco Router Security Delivers All This



## Secure Network Solutions



Business  
Continuity



Secure  
Voice



Secure  
Mobility

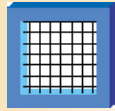


Compliance

## Integrated Threat Management



Advanced  
Firewall



Content  
Filtering



Intrusion  
Prevention



Flexible  
Packet  
Matching



Network  
Admission  
Control



802.1x



Network  
Foundation  
Protection

## Secure Connectivity



GET VPN



DMVPN



Easy VPN



SSL VPN

## Management and Instrumentation



CCP



Role-Based  
Access



NetFlow

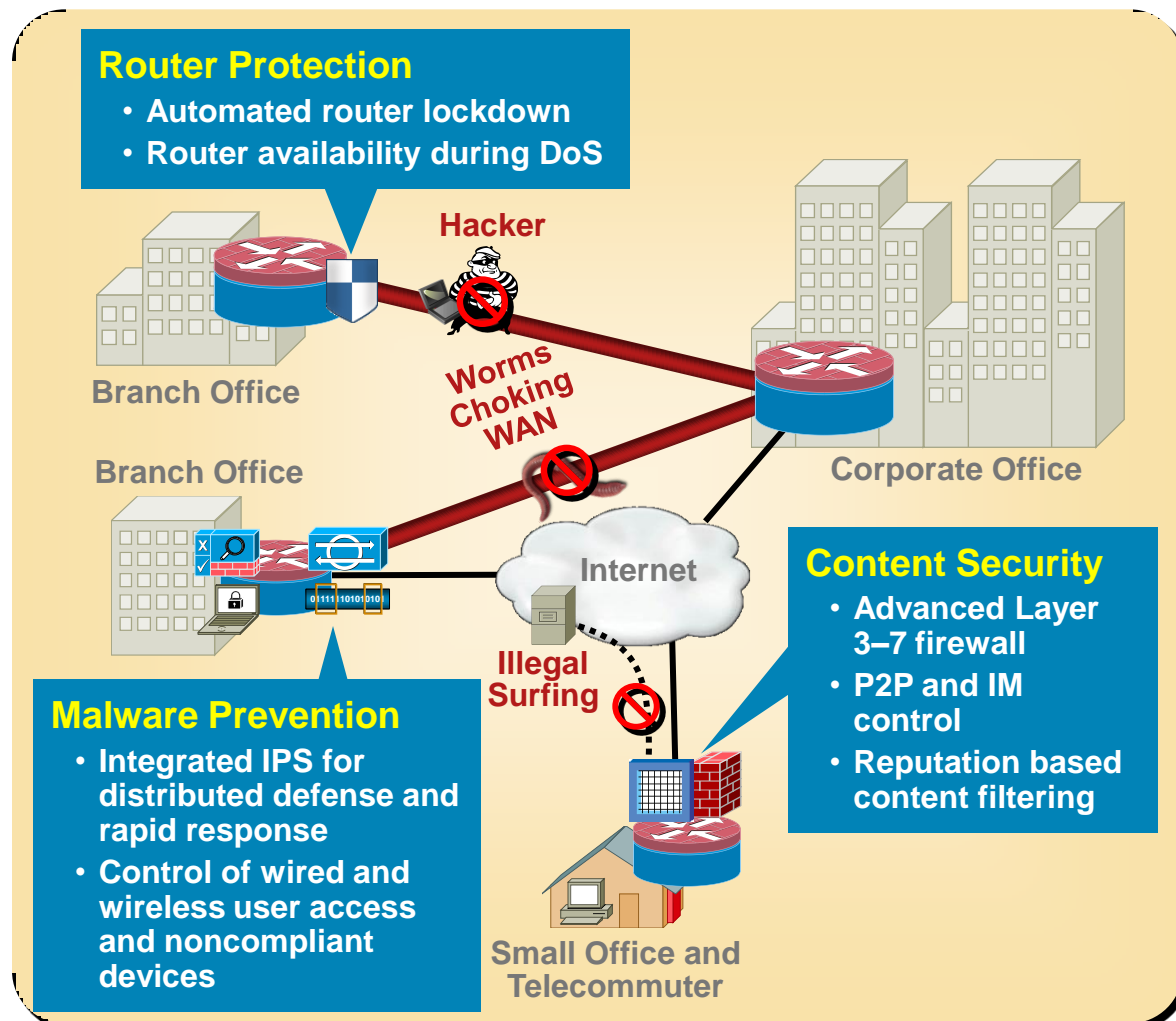


IP SLA

# Integrated Threat Control Overview

## Industry-Certified Security Embedded Within the Network

- Access branch office has secure Internet access and no need for additional devices
- Solution controls worms, viruses, and spyware right at the remote site; conserves WAN bandwidth
- Solution protects the router itself from hacking and DoS attacks



# Integrated Threat Control ROI

## Loss of Data and Time

- Average cost of a security incident in UK:
  - £17,000 for overall
  - £130,000 for large business
- Biggest effect:
  - Availability of information
- Additional costs:
  - Disruption to business
  - Time spent responding to the incident
  - Direct financial loss
  - Damage to reputation

Source: UK Department of Trade and Industry  
Information Security Survey, 2006

## Annual Loss from Unauthorized Access to Information

Survey Year	Loss per Respondent
2007	\$345,005
2006	\$167,713
2005	\$204,000



Source: CSI/FBI Computer Crime  
Survey, 2007

# ValueClick Case Study



“If we were not able to use an **integrated solution**, the networks at all of our remote sites would become much more complicated, and our staffing requirements would substantially increase.”

- Kevin Graham, Director of Networks, Security, and Storage, ValueClick

## Business Challenge:

- Protect against malware and Internet threats
- Provide robust security with no disruptions
- Maintain simplicity for remote locations

## Network Solution:

- Cisco Router Security solutions for integrated firewall and VPN services

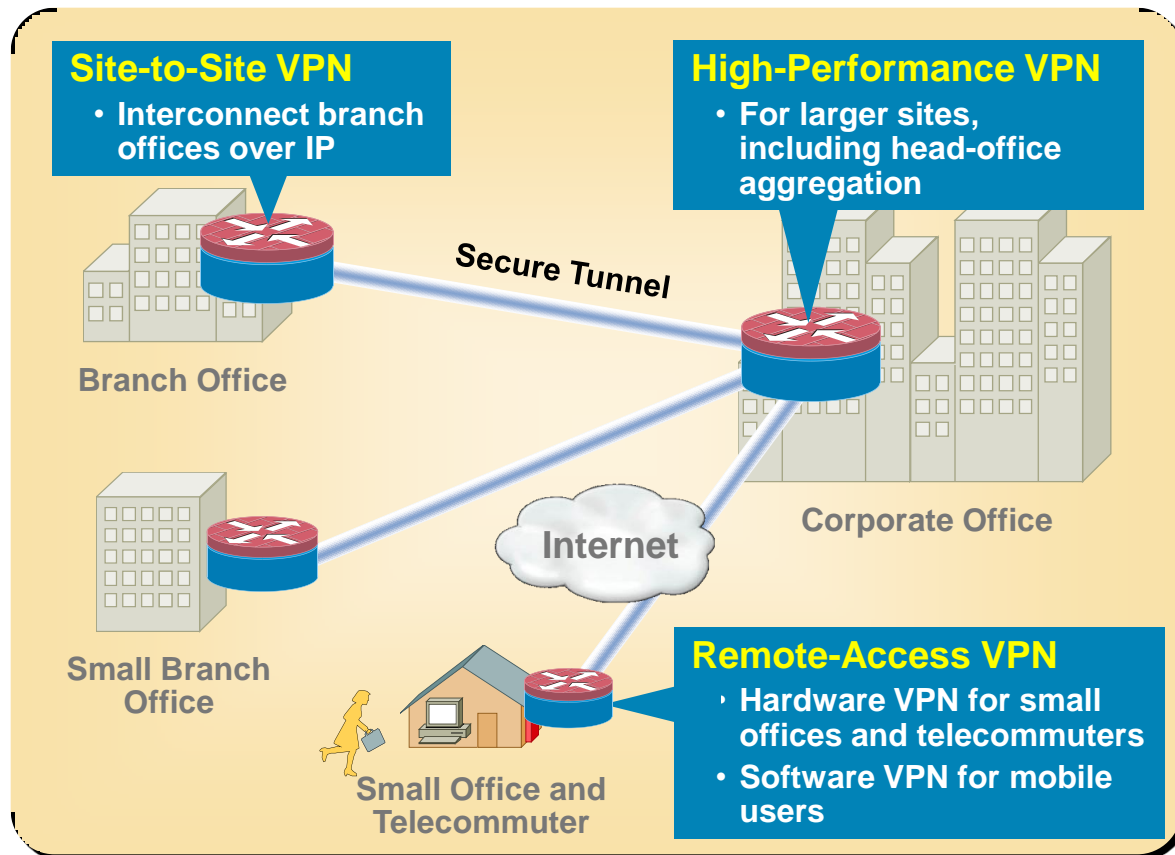
## Business Results:

- Strong, integrated defense
- Simple, efficient security management
- Helps meet auditing and regulatory compliance requirements

# Secure Connectivity Overview

## VPN and High Availability for the WAN

- Encrypted VPN connectivity between sites or partners
- Secure remote access
- High ROI of leased line or Frame Relay to VPN migration



Network Integration is the Key



# Secure Connectivity ROI

## Compelling ROI for VPN Migration

### Before – Frame Relay

1.5M (512,000 CIR) Port Speed

30 Sites

Access Charge per Site = \$350

Total Branch Access = \$10,150

Headend Access = \$3,800

**Total Cost per Month = \$13,950**

Frame charge based on service provider's average T1 services

### After – Broadband IP VPN \*

1.5M Port Speed

30 Sites

Cost of 2811 x 29 Sites = \$78,760

Cost of 3845 Headends = \$12,700

Total Nonrecurring Cost = \$91,460

Access Charge per Site = \$80

Total Branch Access = \$2,320

Headend Access = \$3,800

**Total Cost per Month = \$6,120**

\*Broadband based on DSL or cable Internet business services (average)

**\$8,000 per Month Savings**  
**Equipment Paid Off in Less than a Year**

# Secure Connectivity Case Study

## Data Encryption for Frame Relay or Leased Lines

### Business Problem

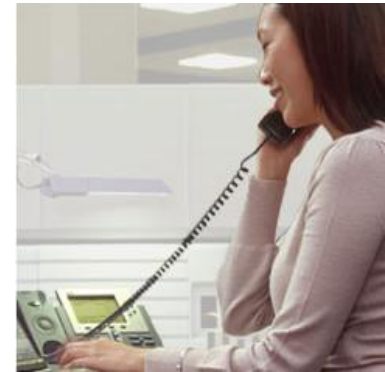
- Reduce risk of exposing customer data (e.g., credit card); avoid painful disclosure and negative publicity

### Real-Life Example

- Online retailer with WAN connectivity through Frame Relay
- The service provider misprovisioned a DLCI change
- Another company's network overlapped into the retailer's network...
- Notification of Risk to Personal Data (NORPDA) mandates that all customers be notified of breach

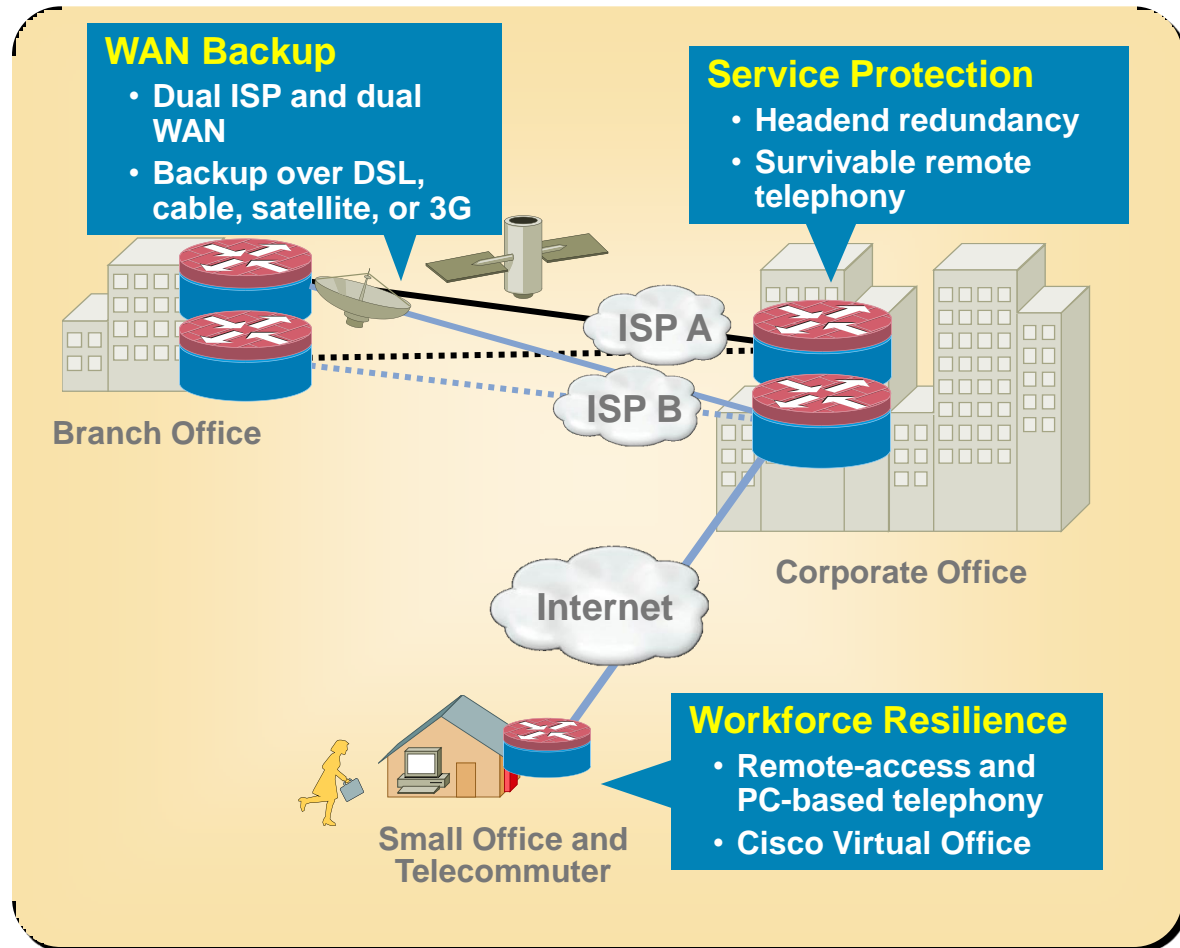
### Solution

- Customer now encrypts all traffic over its WAN
  - Unencrypted traffic is denied entrance to the customer's Frame Relay network
- Security of customer data is ensured



# Business Continuity Overview

- Network availability during attacks and disasters
- Employee communications during disasters
- Uninterrupted operation of business-critical applications
- Office-caliber resources to the remote workforce



# Cost of Risk as Measured by Downtime

- Costs for downtime are high
  - One day cost of lost productivity = \$1,640 per employee
- More than just a data network outage
- More than just revenue affected:
  - o Revenue loss
  - o Productivity loss
  - o Impaired financial performance
  - o Damaged reputation
  - o Recovery expenses

Industry Sector	Revenue/Hour	Revenue/ Employee- Hour
Energy	\$2,817,846	\$ 569
Telecommunications	\$2,066,245	\$ 186
Manufacturing	\$1,610,654	\$ 134
Financial Institution	\$1,495,134	\$1,079
Insurance	\$1,202,444	\$ 370
Retail	\$1,107,274	\$ 244
Transportation	\$ 668,586	\$ 107
Average	\$1,010,536	\$ 205

Source: Meta Group

# Secure Voice Overview

- Traditional threats remain in the converged world of IP communications

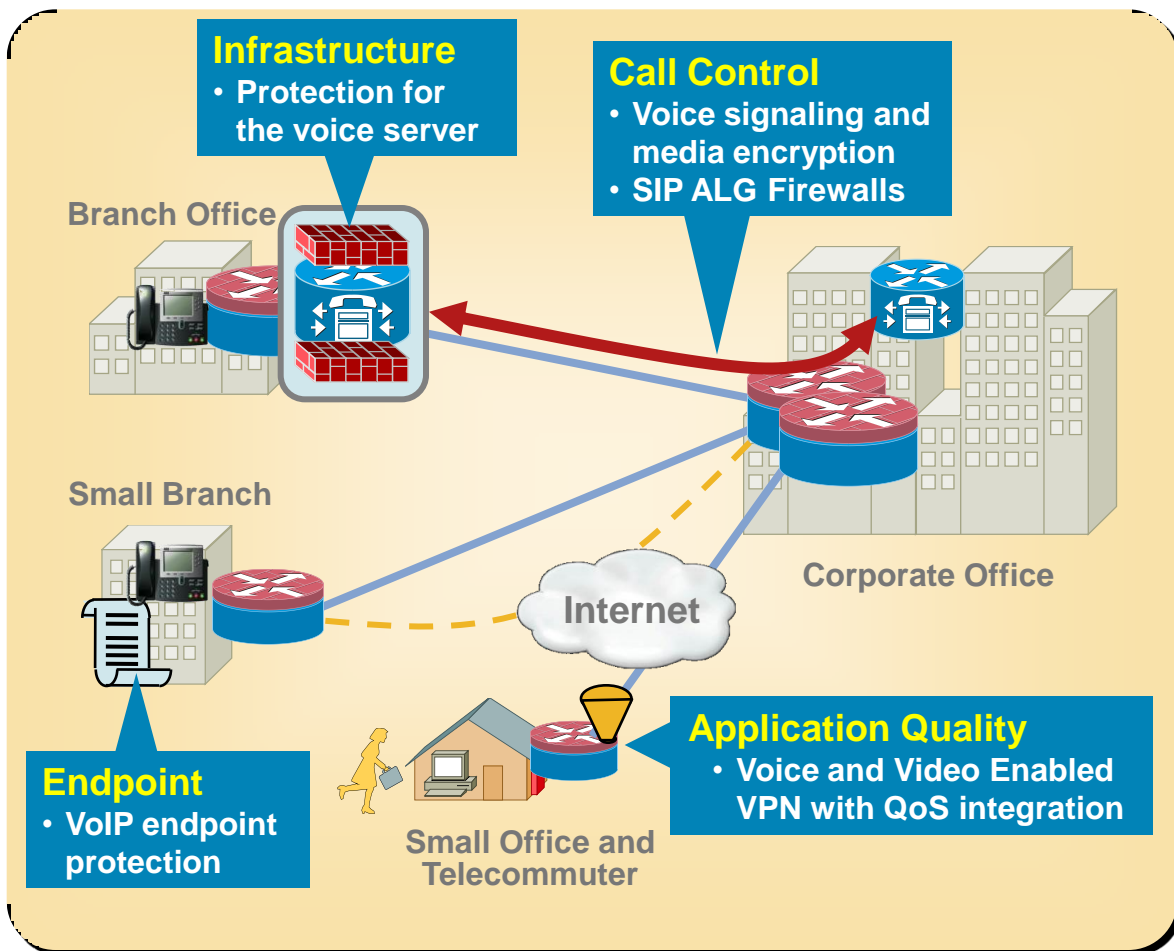
Eavesdropping

Toll fraud

Denial of service



- Integrated security reduces the total cost of ownership



# Secure Voice Bundles TCO

Cheaper to Buy Now vs. Later

Product	Router Only	Secure Voice Bundle (VSEC-CCME)	Savings
<b>Cisco 2801</b>	\$5,745	\$4,095	<b>\$1,650</b>
<b>Cisco 2811</b>	\$5,995	\$4,695	<b>\$1,300</b>
<b>Cisco 2821</b>	\$8,445	\$6,395	<b>\$2,050</b>
<b>Cisco 2851</b>	\$12,895	\$9,595	<b>\$3,300</b>
<b>Cisco 3825</b>	\$17,800	\$13,795	<b>\$4,005</b>
<b>Cisco 3845</b>	\$22,500	\$17,795	<b>\$4,705</b>

Bundles with part number VSEC-CCME include:

- Cisco IOS® Advanced IP Services feature set
- DSP (PVDM) and memory
- Cisco® Unified CallManager Express Feature License

# Secure Voice Case Study



## Business Problem: Real-Life Example

- ePlus: Financial solutions and enterprise software
- Need: To unify dispersed nationwide workforce
- Requirement: Secure voice and data for remote sites

## Solution

- Voice functions integrated into Cisco® integrated services routers
  - Routers replaced 35 disparate phone systems.
  - Now employees reach coworkers anywhere with four-digit extension.
- Connectivity costs cut by \$840,000 per year by migrating from Frame Relay to DMVPN
- Future video conferencing, content caching, intrusion prevention, and NAC services
- Quick business expansion: Cookie-cutter deployment; phones for new sites up in 2 hours

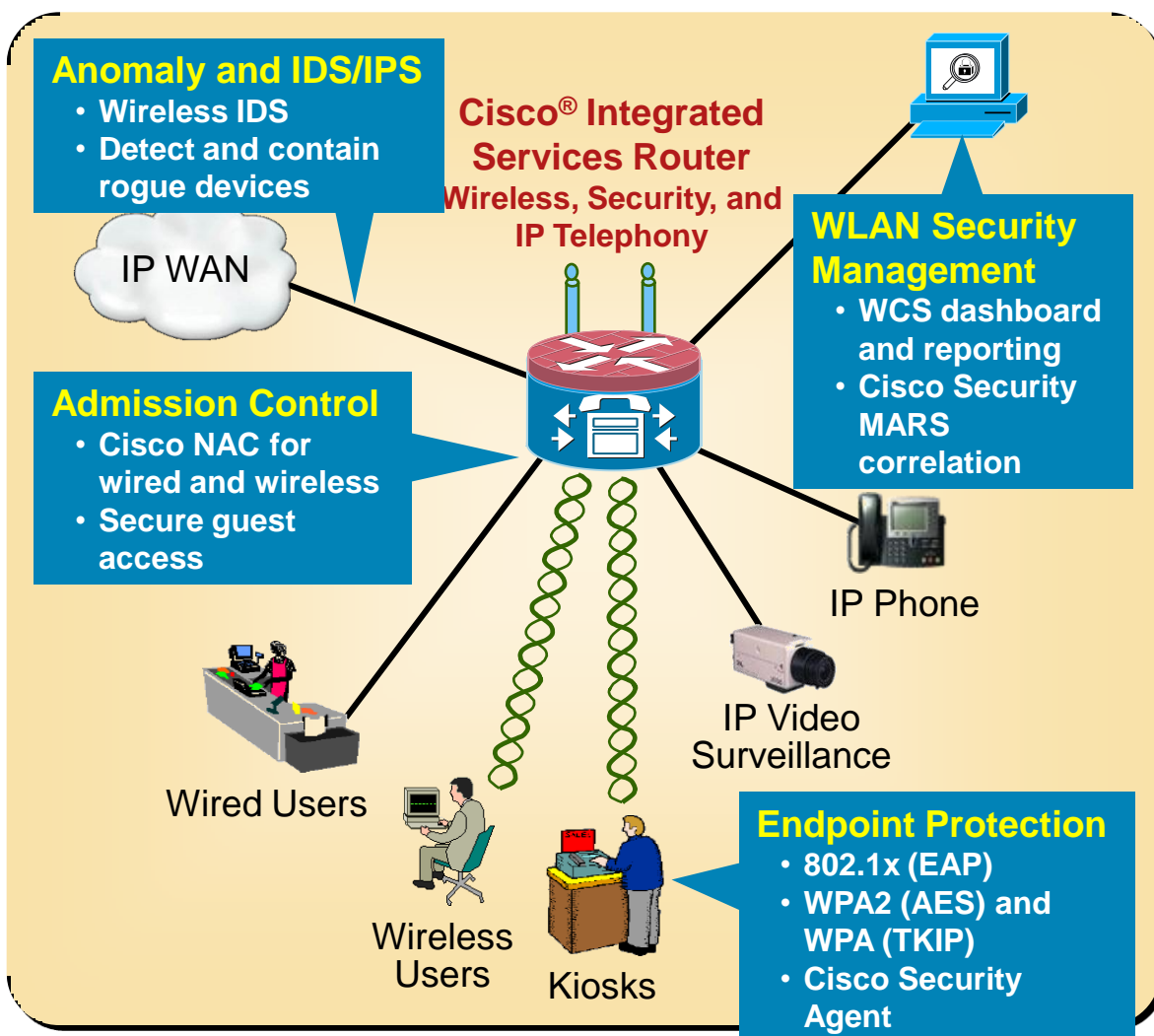
“The Cisco integrated services routers allow us to centralize everything into a router. By the time we have completed our deployment, we will have doubled ...our organization, while reducing maintenance and circuit costs.”

Chris Fairbanks, Principal Network Architect, ePlus Inc.



# Secure Mobility Overview

- Mobile access to critical applications and data throughout the site, while maintaining security
- Ease of deployment; interoperation with wide range of client devices
- Reliable, scalable, centralized security management





# Secure Mobility Case Study

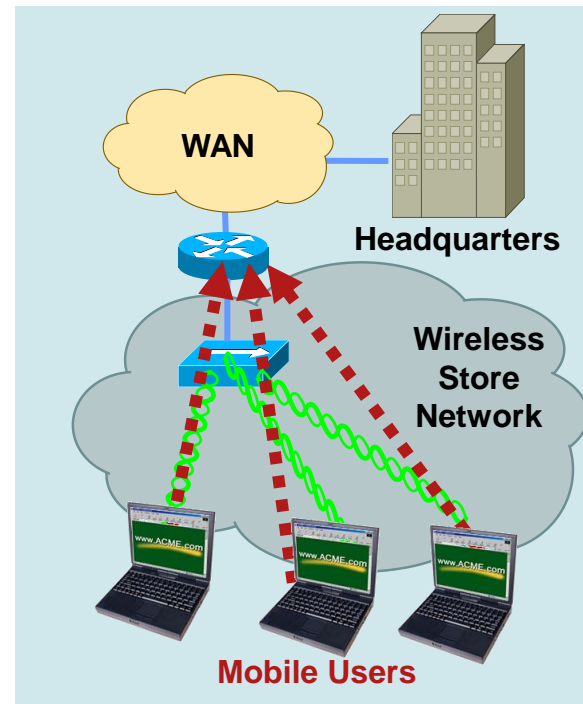
## Mobile Retail Application

### Business Problem: Real-Life Example

- One of the largest U.S. retailers
- Mobile Windows PC application being delivered to every site
- Basic wireless security of mobile device failed during security audit (deemed vulnerable)
- Requirement: Converge separate systems and data networks into a single solution that is easier to manage and lowers operating costs

### Solution

- Mobile devices now use IPsec and AES with L2TP and Microsoft AES from the store wireless network back to the router and WAN.
- Cisco® integrated services routers have built-in AES 128, 192, and 256 – the strongest commercial encryption available today.



“The Cisco 2800 Series Router will become the ‘communications hub’ of our new stores.”

# Secure Mobility Case Study

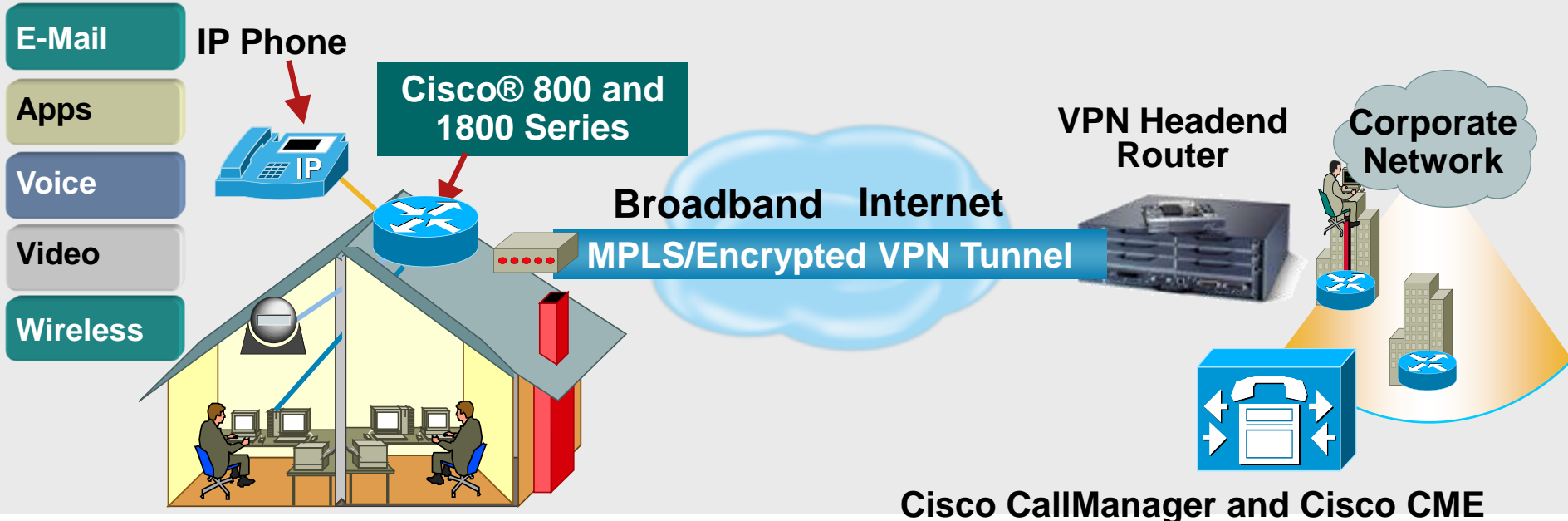
## Small Remote Office or Teleworker



Advanced Application  
Support (voice and  
video)



Centralized Management:  
IT-Managed Security  
Policies



Corporate Pushed  
Security Policies  
(not user-  
managed)



Corporate Phone,  
Toll-Bypass,  
Centralized  
Voicemail



Integrated  
Security and  
Identity  
Services



Optional  
Secure  
Wireless LAN



# Compliance Regulations Overview

Regulation	Information Protected	Date of Enforcement
HIPAA	Health information of patients	1996
GLBA	Consumer financial information	1999
SOX	Business financial and accounting information	2002
CA SB 1386*	Consumer personal information	2003
PCI	Credit card information	2008**

\*As of July, 2008, 44 states had passed security breach notification laws

\*\* PCI DSS version 1.2 (October)

# PCI Applies to Nearly Every Industry



# The Payment Card Industry (PCI) Data Security Standard

- Published January 2005
- Impacts ALL who **process, transmit, or store** cardholder data
- Also applies to 3<sup>rd</sup>-party hosting companies, information storage companies, etc.
- Monthly fines ranging from \$5,000 to \$50,000 for missed deadlines
- Has global reach**

Theater	Level 1	Level 2	Level 3
US	SEP 2007	DEC 2007	DEC 2008
Western Europe	Negotiated individually	MAR-DEC 2008	MAR-DEC 2008
Asia	DEC 2009	DEC 2009	DEC 2009
Canada	2008 TBD	2008 TBD	2008 TBD
Latin American CEMEA	Not Published yet		
CEMEA American Latin	Not Published yet		
Canada	2008 TBD	2008 TBD	2008 TBD

Source: pcisecuritystandards.org

# Compliance Case Study

## Securing Customer Credit Card Information

### Business Problem: Real-Life Example

- Leading specialty retail chain
- Requirement: Compliance with government regulations; maximum security for customer credit card information

### Solution

- Cisco® Integrated Services Router with voice security (VSEC) bundle
  - Provides required level of security and compliance
  - Reduces cost of ownership
  - Offers security for voice and wireless
- Platform for future capabilities
  - Enhanced wireless, e-learning, RFID and location services, and PS system

# Total Security System Management

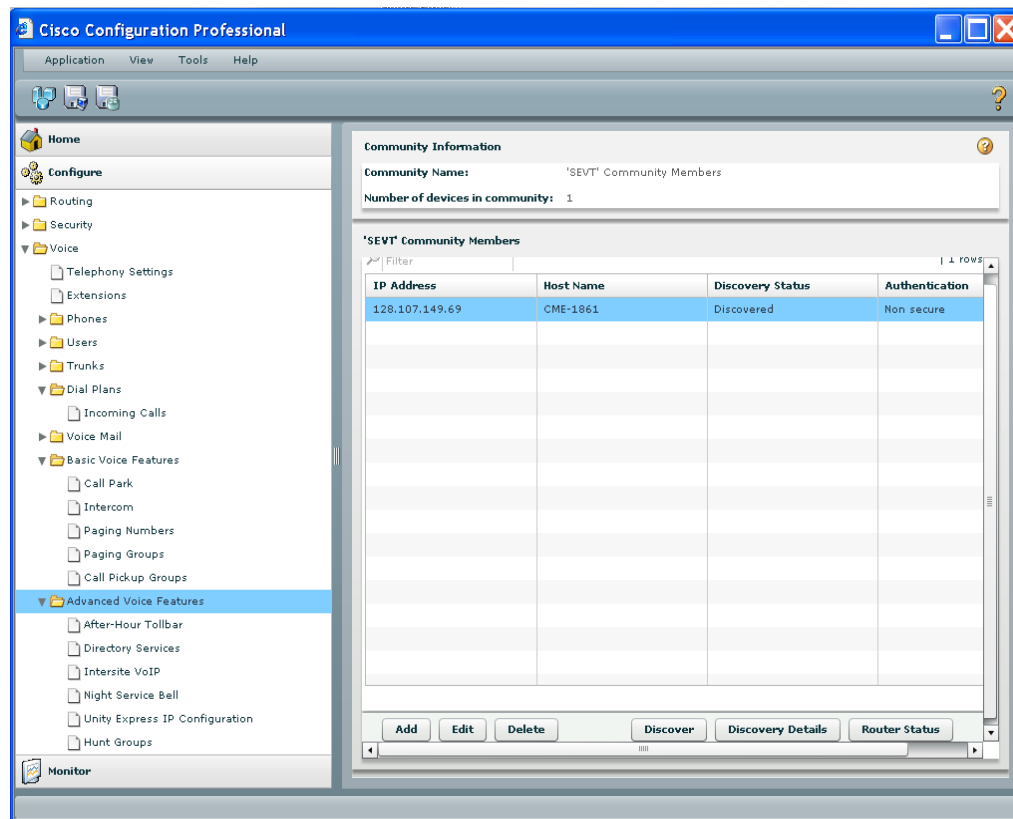


Reduced complexity for more effective risk analysis and operational control

# Cisco Configuration Professional

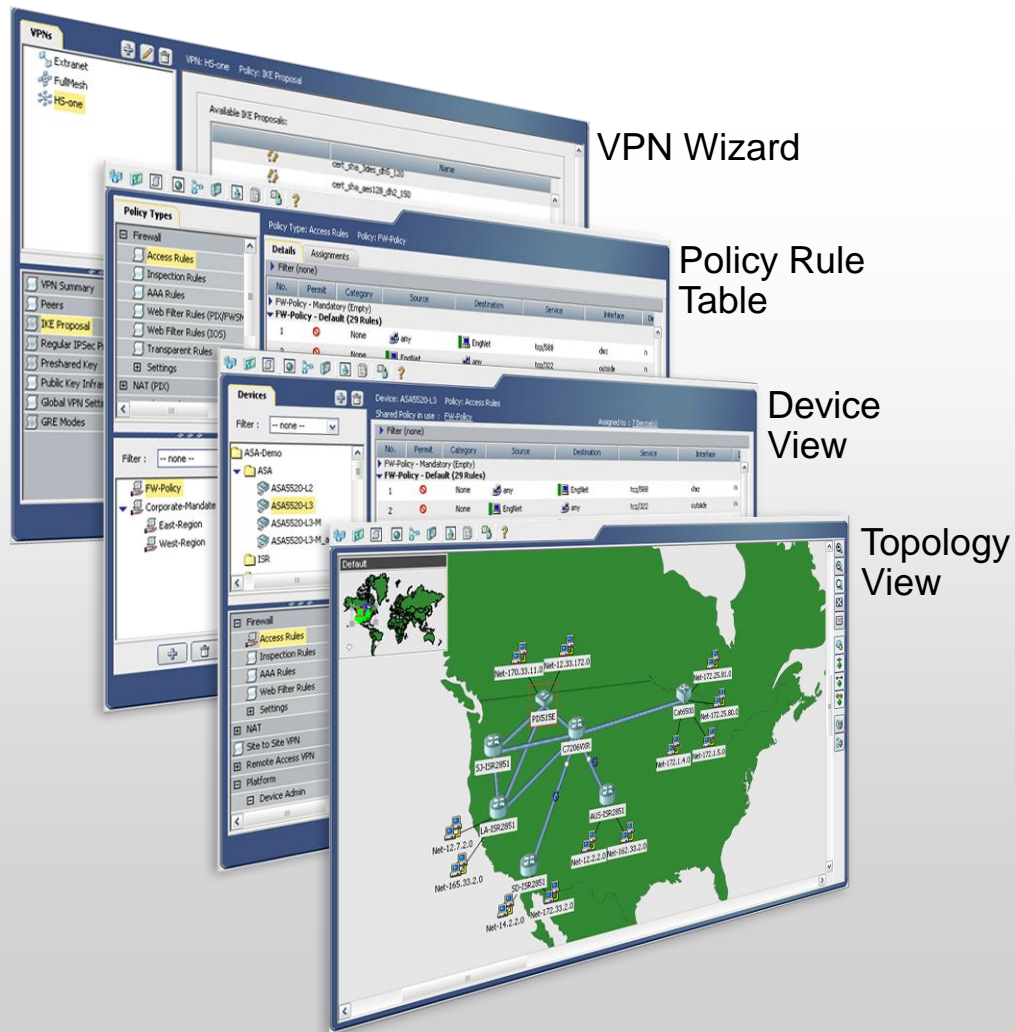
- Unified GUI
  - Routing
  - Security
  - Unified Communications
- Wizard led configuration
  - LAN, WLAN, and WAN
  - Firewall, IPS, and VPN
  - QoS, ACLs
- Voice Gateway, SRST or CME Configuration

Free Download:  
<http://www.cisco.com/go/ciscocp>





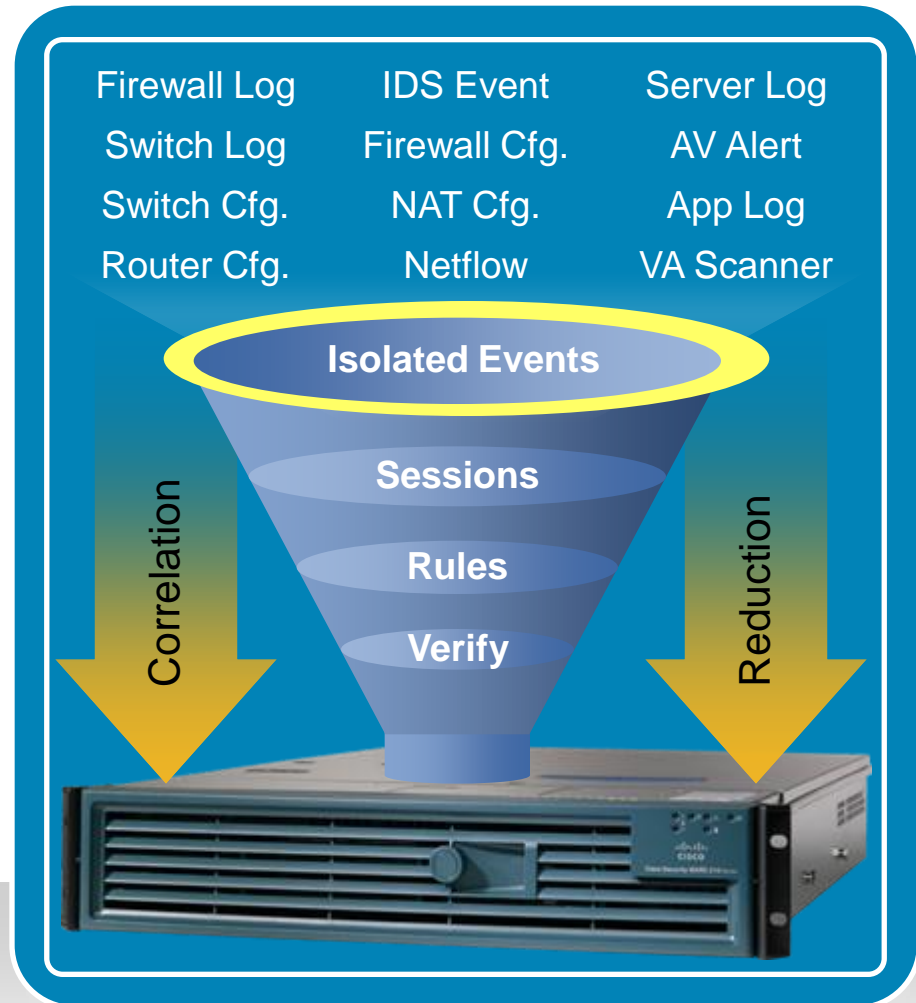
# Cisco Security Manager



- Unified services management for security including firewall, VPN, and IPS
- Intuitive, feature-rich user interface
- Different views for different administrative preferences
  - Device View
  - Topology View
  - Policy View
- Efficient management architecture for large-scale security deployments

# Cisco Security MARS

- MARS is an acronym = Monitoring, Analysis, and Response System
- Security threat mitigation appliance
- Rapid threat detection, isolation and mitigation, topologically aware
- Command and control for your existing network security
- Correlates data from across disparate multi-vendor security devices and applications



# Summary

- Complex security challenges are increasing the need for a solutions approach
- Cisco Router Security is a critical element of Self-Defending Networks.
- Cisco Router Security delivers proven, secure solutions for business continuity, compliance, voice, and wireless
- An integrated approach reduces operations complexity and costs
- Cisco Router Security solutions can maximize your ROI

[www.cisco.com/go/routersecurity](http://www.cisco.com/go/routersecurity)



