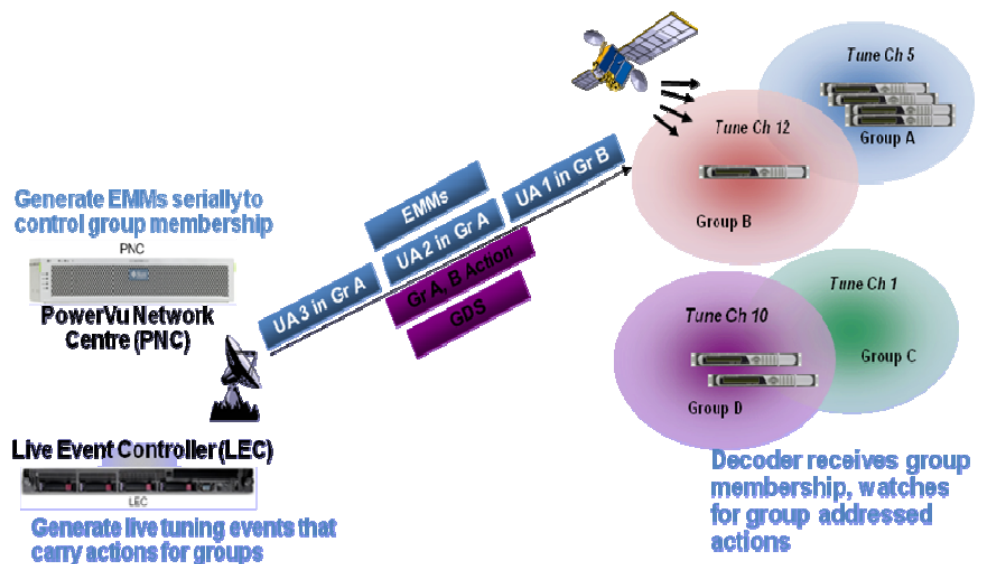


Cisco Live Event Controller

Description

The Cisco® Live Event Controller (LEC) server is used by programmers and broadcasters to perform uplink-commanded, dynamic channel tuning for receivers. It provides the capability for programmers and broadcasters to manage the access rights of services based on event groups. Users define the event groups and assign decoders to the groups on the PNC (PowerVu® Network Centre). Once decoders are assigned to groups, users can create and schedule live tuning events on the LEC. Decoders can be tuned by live events. The start/end time of the event is dynamically controlled via a button push. This feature provides users with an extra level of flexibility in managing services.

Figure 1. Overview of Live Event Tuning Mechanism



The LEC computer is a server with an ASI card that interfaces with the MUX ASI card to pass through the event control data. It also interfaces with the PNC and a General Purpose Input (GPI) module via Ethernet connections. The LEC client is accessed through the PNC GUI client.

The PNC monitors the LEC application. Network Services and event group data is automatically coordinated between the PNC and LEC. Channel tuning events are imported via an easy-to-use web interface, and are triggered based on time or GPI triggers (button). Event control data can be targeted to different groups of receivers. Receivers with LEC support are tuned to a designated channel based on event control data instructions.

Figure 2. PowerVu Multi-Channel Distribution System

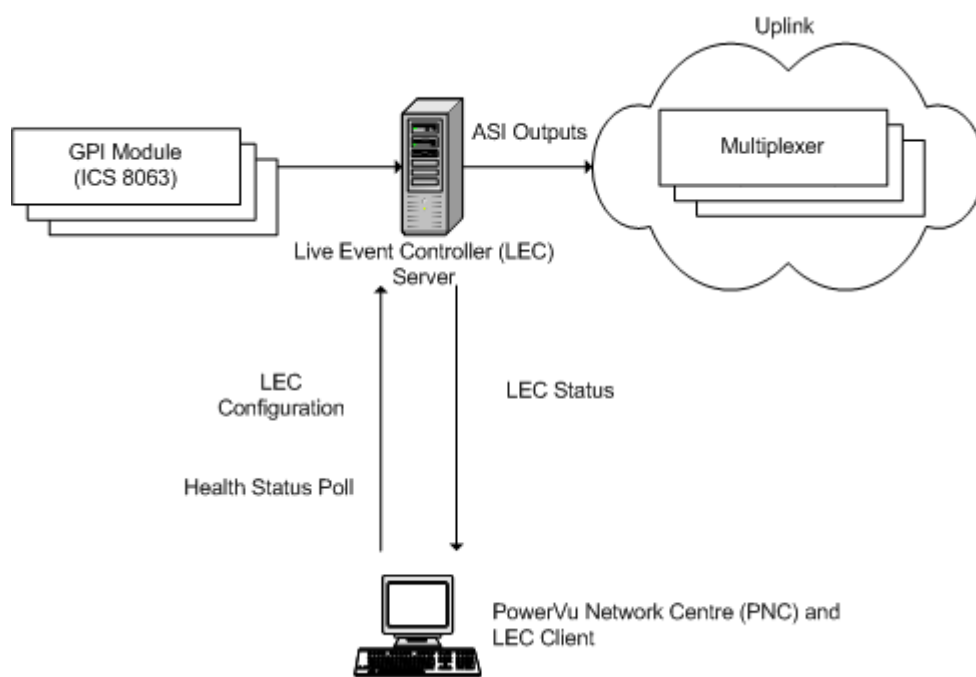
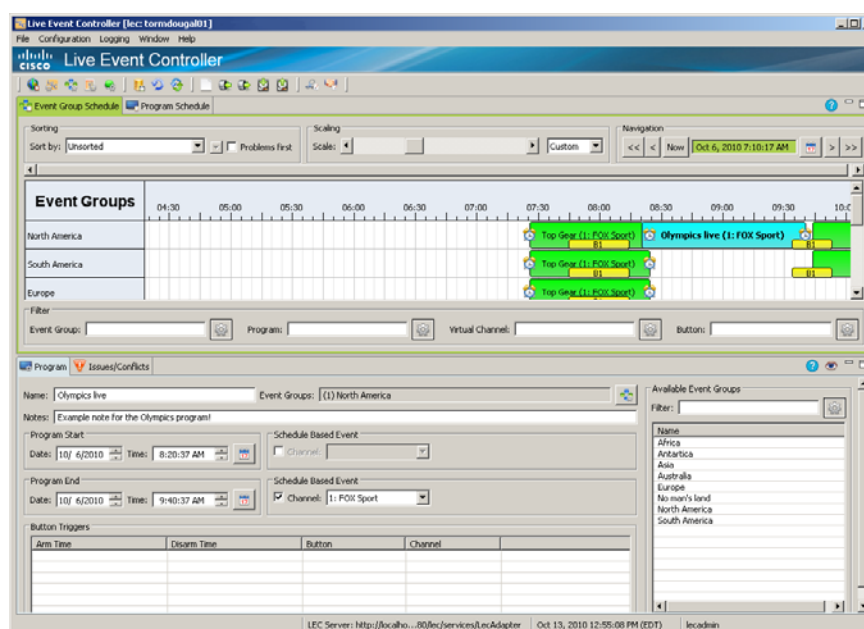


Figure 3. Sample Screen of the Live Event Controller

Features

- Fast switching time based on scheduled or dynamic tuning (via button push)
- Flexible channel-by-channel switching
- Easy to manage schedule via imported tuning events (Excel spreadsheet)
- Dual redundant power supplies
- Capacity for one or more ASI cards, each with three ASI outputs
- 15 GPI contact sensors per GPI module
- Maximum 250 GPI contact sensors
- Supports up to 5000 event groups per LEC/PNC
- Supports up to 32 event group assignments per receiver
- Supports up to 32 event groups per tuning event
- Event definition file import
- Backup/restore capability
- Soft -button trigger capability
- Warm standby redundancy support

Specifications

Table 1. Product Specifications

Functions	Features
Transport Input	
DVB-ASI Output	4 ASI outputs
Connector	BNC
Impedance	75 ohms
TS Packet Length	188 bytes
ASI Bit Rate	213 Mb/s
Power Requirements	
AC Power	110/220 VAC

Notes:

1. The LEC Server is provided with the system. All other computers are optional.
2. An additional Ethernet switch must be added when using more than one GPI module.

Ordering Information

Table 2. Ordering Information

Description	Part Number
Primary Live Event Controller	4033385
Backup (Cold Spare) Event Controller	4033386
Backup (Warm Standby) Event Controller	4038098
Live Event Controller GUI	4038988
GPI Module Add-on	4034200



Cisco and the Cisco logo are trademarks or registered trademarks of Cisco and/or its affiliates in the U.S. and certain other countries. A listing of Cisco's trademarks can be found at www.cisco.com/go/trademarks. All other third party trademarks mentioned in this document are property of their respective owners. The use of the word partner does not imply a partnership relationship between Cisco and any other company. (1009R)

Specifications and product availability are subject to change without notice.

© 2009-2010 Cisco and/or its affiliates. All rights reserved.

1-800-722-2009 or 678-277-1120
www.cisco.com

Part Number 7018662 Rev C
 November 2010