

ROSA™ UDD Profile Manager – 3rd Party Equipment Integration Component

Description

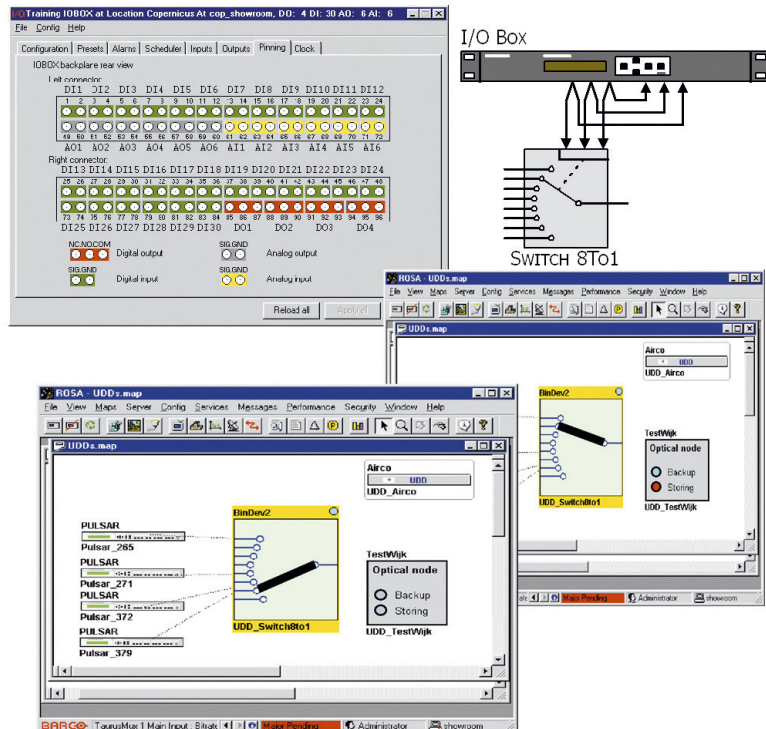
The ROSA™ Element Manager's proven Universal Device Driver (UDD) Profile Manager enables you to manage any equipment with I/O contacts, without software development.

You can create your own configuration menus and define the graphical bitmap of all the devices and their status in the ROSA network maps.

Additionally, you can define the input conditions at which the driver must generate alarms or change the device bitmap.

Once you complete the driver definition it can be reused for many applications.

Interfacing between 3rd party equipment I/O contacts and your UDD profile is achieved with Scientific-Atlanta's versatile I/O Box™ interface.



Features

- Manage any equipment with I/O contacts
- Guarantees freedom of equipment choice
- Offers a future save solution
- High-level view on status and control information
- Configurable scaling and grouping of I/O
- Graphical representation of the device state on the ROSA topological maps
- Very well suited for small remote sites connected with IP



ROSA UDD Profile Manager



Specifications

Additional Features	
User Interface	The UDD Profile Manager allows full control during the creation of a UDD: specification of the UDD user interface, behavior of the UDD in case of alarms, animated state representation with help of bitmaps and assignment of I/O ports for integration on ROSA maps.
License	Server based license (see ROSA documentation). Enabled by the supply of the necessary license key(s).
Installation	From ROSA CD

Requirements	
ROSA	Installation of ROSA 3.0 or later version
Server	See ROSA User's Guide for information

Ordering Information

Equipment Integration Tool	Part Number
UDD Runtime License (runs custom Universal Device Drivers, managed through I/O BOX™)	V9529595
UDD Profile Manager (includes one UDD Runtime license)	V9529610
I/O Box, 110/220 V	V9517002
I/O Box, -48 V	V9517005



Scientific-Atlanta and the Scientific-Atlanta logo are registered trademarks of Scientific-Atlanta, Inc.
ROSA and I/O BOX are trademarks of Scientific-Atlanta Europe NV.
Specifications and product availability are subject to change without notice.
© 2003 Scientific-Atlanta, Inc. All rights reserved.

Europe & Asia
+32 56 445 000 or +49-6173-928-0
www.saeurope.com
Americas
1-800-722-2009 or 770-236-6900
www.scientificatlanta.com

Part Number 7002681 Rev A
September 2003