

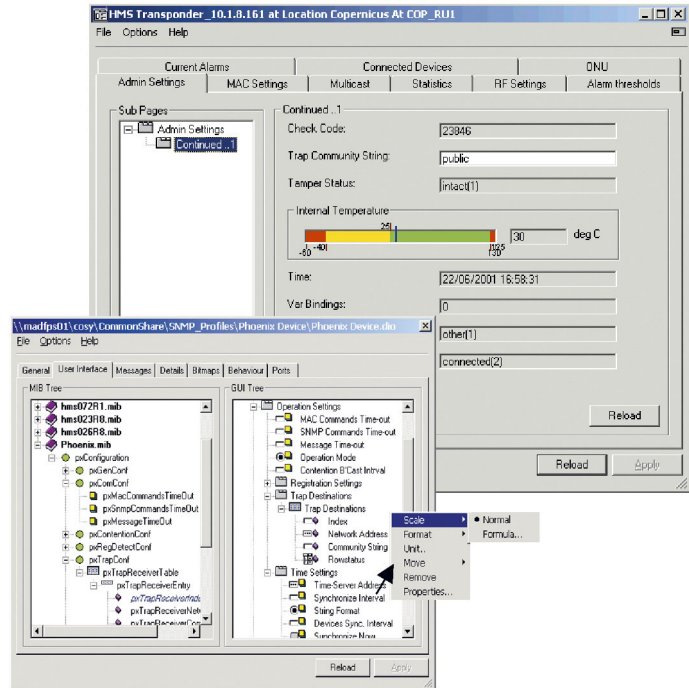
ROSA™ SNMP Profile Manager – 3rd Party Equipment Integration Component

Description

The ROSA™ Element Manager's SNMP Profile Manager is a design tool that lets you integrate any brand of SNMP enabled network equipment at lowest cost, without software development.

This unique concept makes it possible to integrate the SNMP devices quickly and easily. The operator simply creates a profile with some mouse clicks in the graphical driven user interface to generate an SNMP driver that can be installed in the ROSA software.

For most Scientific-Atlanta equipment, there are 'off the shelf' profiles available that can be easily customized to your needs. To integrate 3rd party equipment, use the Management Information Base (MIB) files of the 3rd party vendor to create your profile.



Features

- Highly reliable integration; no software development involved
- Freedom in equipment choice and future save solution
- Customize your view of the equipment and its alarm traps at any time
- Drag-and-drop graphical user interface creation
- Automatic SNMP trap to ROSA message mapping with help of a wizard
- Animated representation on the ROSA topological maps



Specifications

Additional Features	
User Interface	The SNMP Profile Manager allows full control during the creation of an SNMP Profile: specification of the user interface by using drag-and-drop from the MIB tree, behavior of the SNMP Profile in case of SNMP traps, animated state representation with help of bitmaps and assignment of I/O ports for integration on ROSA maps.
License	Server based license (see ROSA documentation). Enabled by the supply of the necessary license key(s).
Installation	From ROSA CD

Requirements	
ROSA	Installation of ROSA 3.0 or later version
Server	See ROSA User's Guide for information

Ordering Information

Equipment Integration Tool	Part Number
SNMP Manager Runtime License (runs custom SNMP profile drivers)	V9529615
SNMP Profile Manager (includes one SNMP Manager Runtime license)	V9529616



Scientific-Atlanta and the Scientific-Atlanta logo are registered trademarks of Scientific-Atlanta, Inc.
ROSA is a trademark of Scientific-Atlanta Europe NV.
Specifications and product availability are subject to change without notice.
© 2003 Scientific-Atlanta, Inc. All rights reserved.

Europe & Asia
+32 56 445 000 or +49-6173-928-0
www.saeurope.com
Americas
1-800-722-2009 or 770-236-6900
www.scientificatlanta.com

Part Number 7002682 Rev A
September 2003