

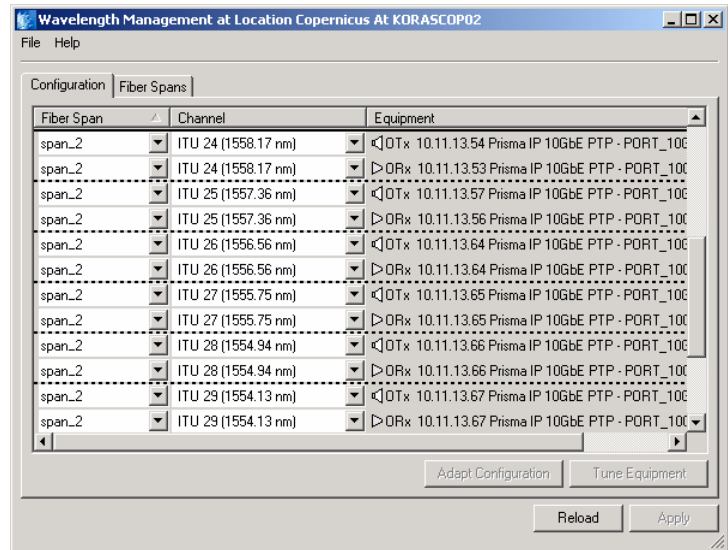
## ROSA™ Wavelength Management

### Description

The ROSA™ Wavelength Management component gives a comprehensive overview of the tunable equipment in the optical network and allows an easy and fail safe provisioning of the wavelengths.

Provisioning an optical network with tunable optics is a complex and error-prone process. The ROSA Wavelength Management component solves this complexity and dynamically provisions or reallocates wavelengths and bandwidth when transmitters or receivers are added. It also provides fail safe control to ensure that duplicate wavelengths are not accidentally provisioned over the same fiber span.

The ROSA Wavelength Management component auto detects the tunable cards of the Prisma IP™ and Prisma GbE™ platforms. The user can configure each fiber span in the network topology.



The ROSA Wavelength Management component indicates differences between the provisioned wavelength and the equipment settings. In case of a replacement with spare cards, a simple reapply provisions the correct wavelength settings to the new equipment.

### Features

- Provides fail safe control to ensure duplicate wavelengths are not accidentally provisioned over the same fiber
- Auto detects the cards of the Prisma IP and Prisma GbE platforms
- Overview of available wavelengths per fiber span
- Dynamically provision/reallocate wavelengths when transmitters or receivers are added
- Easy provisioning of the wavelength settings when a tunable card is replaced with a spare tunable card



# ROSA Wavelength Management



## Ordering Information

| Description   | Part Number |
|---|-------------|
| ROSA Tunable Optics Wavelength Management Package<br>Contains all Prisma IP and Prisma GbE Equipment drivers and the Wavelength Management component.<br><b>Note:</b> Runs on ROSA/COPERNICUS™ Client/Server only | 70032310    |
| COPERNICUS ROSA Network Management Server 100-120/200-240 V AC Std<br>Standard SQL database (MSDE)<br>Including RS-232/4 and RS-485/4, ROSA 3.X Client, license for 250 managed devices                           | V000112011  |



Scientific-Atlanta, the Scientific-Atlanta logo and Prisma are registered trademarks of Scientific-Atlanta, Inc.  
Prisma IP and Prisma GbE are trademarks of Scientific-Atlanta, Inc.  
ROSA and Copernicus are trademarks of Scientific-Atlanta Europe NV.  
Specifications and product availability are subject to change without notice.  
© 2004 Scientific-Atlanta, Inc. All rights reserved.

Europe & Asia  
+32 56 445 445  
[www.saeurope.com](http://www.saeurope.com)  
Americas  
1-800-722-2009 or 770-236-6900  
[www.scientificatlanta.com](http://www.scientificatlanta.com)

Part Number 7002874 Rev A  
August 2004