

Cisco Model EPC2325 EuroDOCSIS Wireless Residential Gateway with Wireless Access Point

The Cisco® Model EPC2325 EuroDOCSIS 2.0 Wireless Residential Gateway with Wireless Access Point (EPC2325) combines a cable modem, router, and wireless access point in a single device to provide a cost-effective solution for both home and small office networking.

The EPC2325 has been designed to meet EuroDOCSIS™ 2.0 specifications. In addition, the EPC2325 is fully backward compatible for use on both EuroDOCSIS 1.1 and EuroDOCSIS 1.0 networks.

Figure 1. Model EPC2325 EuroDOCSIS 2.0 Wireless Residential Gateway with Wireless Access Point (image may vary from actual product and specification)



Designed for the active digital home or office, the EPC2325 integrated router features a Dynamic Host Configuration Protocol (DHCP) server, Network Address and Port Translation (NAT/NAPT) and a Stateful Packet Inspection (SPI) firewall. These features allow the user to share a single high-speed public Internet connection as well as share files and folders between devices within the home network by attaching multiple wired and wireless devices in your home or office to the wireless residential gateway.

Consumer-friendly features like Wi-Fi Protected Setup (WPS) and user-configured Parental Control can protect the home network from unwelcome intruders and family members from access to undesirable websites.

Features

- A high-performance processor that supports near-line rate throughput for EuroDOCSIS 2.0
- Compliant with EuroDOCSIS 2.0, 1.1, and 1.0 standards to deliver high-end performance and reliability
- Plug-and-Play operation for easy setup and installation, including color-coded data ports and data cables compliant with the TR-068 specifications
- Support for Home Network Administration Protocol (HNAP) to allow simplified configuration and management
- 802.11g Wireless Access Point with four service set identifiers (SSIDs)
- Wireless MultiMedia (WMM) features including WPS Setup, including a push-button switch to activate WPS for simplified and secure wireless setup
- Allows the user to attach multiple devices to the wireless home gateway for high-speed wired and wireless networking and sharing of files
- Four 10/100BASE-T auto-sensing with auto-MDIX Ethernet ports to provide connectivity for high-speed data services or to other Internet devices
- Advanced firewall technology deters hackers and protects the home network from unauthorized access
- Lockdown mode prevents unauthorized or accidental reset of gateway settings
- Configurable either locally or remotely through web interface, configuration file, or simple network management protocol (SNMP) protocols
- A detachable wireless antenna
- Attractive, compact design that allows for vertical, horizontal, or wall-mount placement
- DOCSIS-5 compliant LED labeling and behavior provides a user- and technician-friendly method to check operational status and act as a troubleshooting tool
- Simple setup with WebWizard graphical user interface
- Allows automatic software upgrades by the user's service provider
- User-configurable Parental Control blocks access to undesirable Internet sites

Figure 2. Model EPC2325 Front Panel (image may vary from actual product and specification)



Table 1. Front Panel Features

Feature	Description
Indicators	Power, DS, US, Online, Ethernet, Wireless Link, Wireless Setup
Color	Black housing, black lens, silver text
Branding	Cisco logo and model number

Figure 3. Model EPC2325 Back Panel (image may vary from actual product and specification)

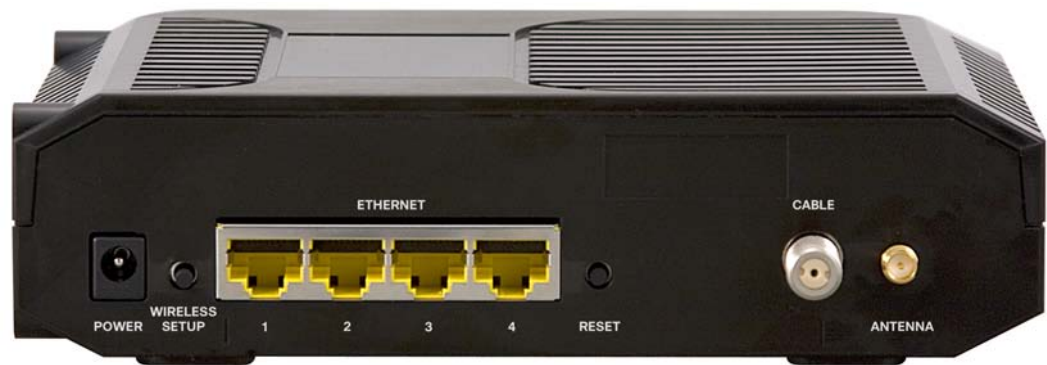


Table 2. Back Panel Features

Feature	Description
Power Connector Color: Black	Connects the EPC2325 to the DC output of the AC power adapter
Wireless Setup	Allows users to activate the Wireless Setup mode for simplified and secure wireless setup of client devices featuring WPS
Ethernet (1 – 4) Connector Color: Yellow	Four RJ-45 Ethernet ports connect to the Ethernet port on the user's PC or home network
Reset	Power cycles the EPC2325
Cable Connector Color: White	F-connector connects to an active cable signal from the service provider
Antenna (not shown)	Provides a communication connection for the built-in WAP

Product Specifications

Table 3. Product Specifications

Specification	Value																									
RF Downstream																										
Frequency Range	108 to 930 MHz																									
Demodulation	64 or 256 QAM																									
Maximum Data Rate	41.4 Mbps for 64 QAM 55.2 Mbps for 256 QAM																									
Bandwidth	8 MHz																									
Operating Level Range	43 to 73 dBμV for 64 QAM 47 to 77 dBμV for 256 QAM																									
Input Impedance	75 ohms																									
RF Upstream																										
Frequency Range	5 to 65 MHz																									
Modulation	QPSK 8 QAM 16 QAM 64 QAM 128 QAM TCM																									
Maximum Data Rate	5.12 Mbps for QPSK 10.2 Mbps for 16 QAM 30.0 Mbps for A-TDMA and SCDMA																									
Bandwidth	200 kHz to 6.4 MHz																									
Operating Level Range (all values +/- 0.5 dBμV)	<table><tr><td rowspan="5">TDMA</td><td>QPSK</td><td>+68 to +118 dBμV</td></tr><tr><td>8QAM</td><td>+68 to +115 dBμV</td></tr><tr><td>16QAM</td><td>+68 to +115 dBμV</td></tr><tr><td>32QAM</td><td>+68 to +114 dBμV</td></tr><tr><td>64QAM</td><td>+68 to +114 dBμV</td></tr><tr><td rowspan="5">SCDMA</td><td>QPSK</td><td>+68 to +113 dBμV</td></tr><tr><td>8QAM</td><td>+68 to +113 dBμV</td></tr><tr><td>16QAM</td><td>+68 to +113 dBμV</td></tr><tr><td>32QAM</td><td>+68 to +113 dBμV</td></tr><tr><td>64QAM</td><td>+68 to +113 dBμV</td></tr><tr><td>128QAM</td><td>+68 to +113 dBμV</td><td></td></tr></table>	TDMA	QPSK	+68 to +118 dBμV	8QAM	+68 to +115 dBμV	16QAM	+68 to +115 dBμV	32QAM	+68 to +114 dBμV	64QAM	+68 to +114 dBμV	SCDMA	QPSK	+68 to +113 dBμV	8QAM	+68 to +113 dBμV	16QAM	+68 to +113 dBμV	32QAM	+68 to +113 dBμV	64QAM	+68 to +113 dBμV	128QAM	+68 to +113 dBμV	
TDMA	QPSK		+68 to +118 dBμV																							
	8QAM		+68 to +115 dBμV																							
	16QAM		+68 to +115 dBμV																							
	32QAM		+68 to +114 dBμV																							
	64QAM	+68 to +114 dBμV																								
SCDMA	QPSK	+68 to +113 dBμV																								
	8QAM	+68 to +113 dBμV																								
	16QAM	+68 to +113 dBμV																								
	32QAM	+68 to +113 dBμV																								
	64QAM	+68 to +113 dBμV																								
128QAM	+68 to +113 dBμV																									
Output Impedance	75 ohms																									
Wireless Access Point																										
Frequency Range	2.412~2.472 GHz, 13 Channels (Europe; CE/ETSI)																									
Modulation	OFDM (Orthogonal Frequency Division Multiplexing) 54, 48, 36, 24, 18, 12, 9 and 6 Mbps CCK (Complementary Code Keying) 11 and 5.5 Mbps DSSS (Direct Sequence Spread Spectrum) 2 and 1 Mbps																									
Data Rate: 802.11g	54 Mbps with Auto Fall-Back																									
Security	WPA2, WPA and 64/128-bit WEP																									
Transmit Power	14 dBm (typical for 802.11g)																									
Antenna System	One (1) external, detachable One (1) internal																									

Specification	Value
Other	
Input Voltage	12 VDC
Power Consumption (Modem Module)	5.8 Watts
Data Ports	Ethernet 10/100BASE-T (Auto-sensing with Auto-MDIX); RJ-45 Ethernet (4)
RF	Female "F" type
Mechanical	
Dimensions (W x D x H) (approximate)	Not including "F" connector: 17.7 cm x 14.5 cm x 5.0 cm (6 15/16 in. x 5 11/16 in. x 2 15/16 in.) Including "F" connector and wireless antenna: 17.7 cm x 15.5 cm x 5.0 cm (6 15/16 in. x 6 in. x 2 15/16 in.)
Weight (approximate)	0.38 kg (13.3 oz)
Operating Temperature	0° to 40°C (32° to 104°F)
Operating Humidity	0% to 90% RH non-condensing
Storage Temperature	-20° to 60°C (-4° to 140°F)
Standards and Approvals	
Designed to Comply with the Following Standards	EuroDOCSIS 2.0, EuroDOCSIS 1.1, EuroDOCSIS 1.0 IEEE 802.11g WEP, WPA, and WPA2 WMM, WPS
Regulatory and Safety Approvals	As required per country where the EPC2325 will be used

Ordering Information

Table 4. Ordering Information

Model	Description	Part Number
International Configuration – PAL/NTSC		
Model EPC2325	EPC2325 EuroDOCSIS 2.0 Wireless Residential Gateway. Includes: <ul style="list-style-type: none">• International tuning plan• 230 VAC/50 Hz, 15 VDC/1 A desktop linear power supply for Europe• Ethernet cable• CD-ROM containing user guide	4027677

Replacement Components

Table 5. Replacement Components

Description	Part Number
Power Supplies	
<i>Class 2 Linear-Switching</i>	
230-240 VAC/50-60 Hz, 12 VDC/1 A wall-mount linear-switching power supply with Eurostyle connector	4015453
<i>Class 2 Switching Regulated</i>	
100-240 VAC/50-60 Hz, 12 VDC/1 A wall-mount switching regulated power supply with Eurostyle connector	4022057
Data Cables	
Ethernet Cable, 1.2 Meters	740580
CD-ROM	
CD-ROM with User Guide	4029642



Cisco, Cisco Systems, the Cisco logo, the Cisco Systems logo, and Scientific Atlanta are registered trademarks or trademarks of Cisco Systems, Inc. and/or its affiliates in the U.S. and certain other countries. EuroDOCSIS is a trademark of Cable Television Laboratories, Inc.

All other trademarks mentioned in this document are the property of their respective owners.
Specifications and product availability are subject to change without notice.
© 2009 Cisco Systems, Inc. All rights reserved.

Service Provider Video Technology Group
1-800-722-2009 or 678-277-1120
www.scientificatlanta.com

Part Number 7016665 Rev A
January 2009