



Cisco Catalyst 3750-E and Catalyst 3560-E Series Switches



Berna Devrim

Overview

- Evolving the Network with the Business
- Success Stories
- Why Cisco?

Business Needs Are Changing



Collaboration



Empowered User



SLA Metrics



Global Availability



Regulatory Compliance

New Business Pressures



Operational Limitations

Rising Costs



Changing Traffic



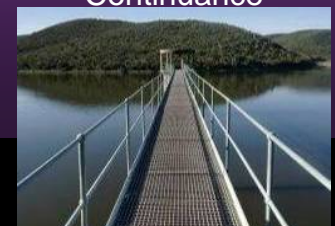
Bandwidth Needs



Security Threats



Business Continuity



Align the Network with the Business

- React to Business Shifts
- Improve Customer Service
- Boost Worker Productivity

Business Priorities

- Ensure Business Continuity
- Control Costs – Grow Revenue
- Ensure Privacy and Compliance

Innovation

- Reduce Business Latency
- Speed Deployment
- Increase Collaboration

Information Technology (The Network)

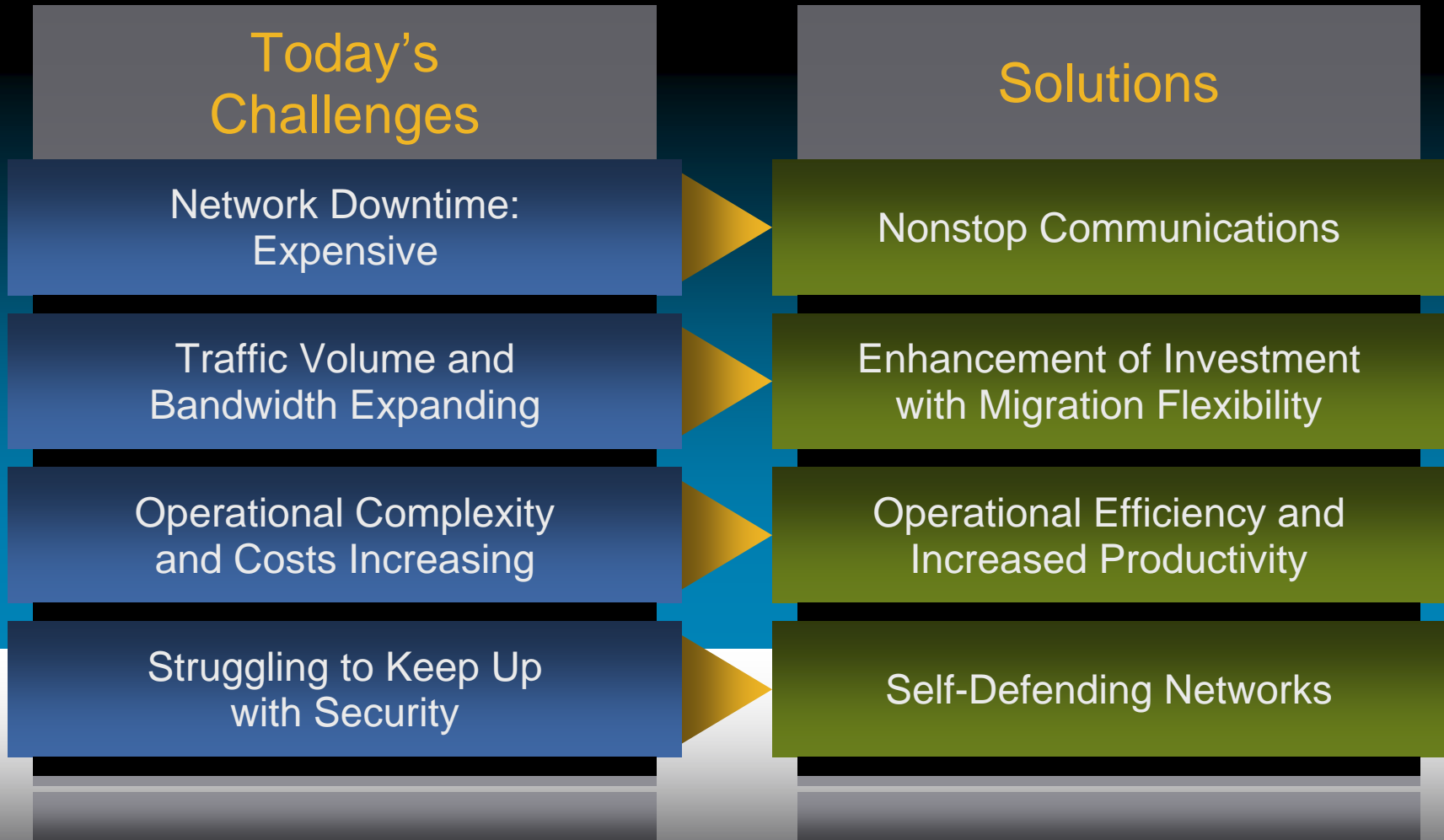
Operational Excellence

- Protect and Use Assets
- Manage Risk and Compliance
- Ensure IT Productivity

Evolving the Network with the Business



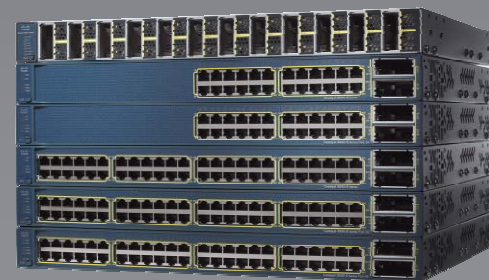
Campus Access Challenges



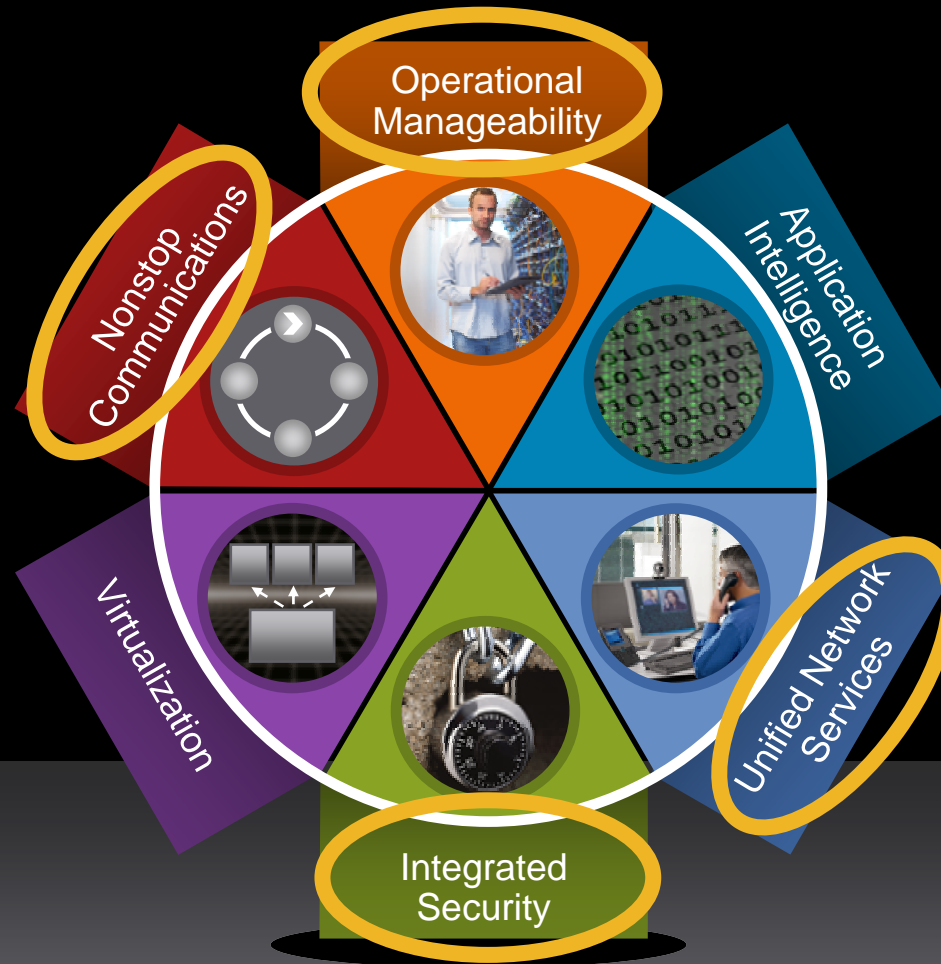
Cisco Catalyst 3750-E and Catalyst 3560-E Series Switches

- 24 or 48 10/100/1000 ports
- Two 10 Gigabit Ethernet uplinks on all models
- 10-second 10 Gigabit upgrade with Cisco® TwinGig Converter Module
- Full Class 3 (15.4W) Power over Ethernet support on all 48 ports
- 802.11n support: Industry first to scale beyond 15.4W per port
- Cisco StackWise® Plus: Backward-compatible, 64-Gbps and local switching
- Field-replaceable power supply and fan
- Cisco Redundant Power System 2300 support
- High-performance IP routing

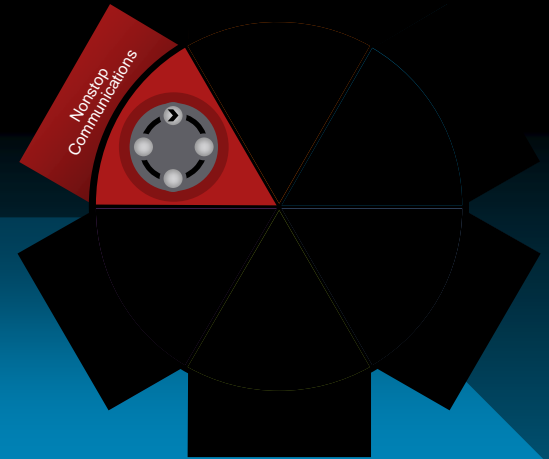
Innovative Stacking
Sets New Standards
for Resiliency and
Management



Building on the Campus Communication Fabric



Cisco Catalyst 3750-E and Catalyst 3560-E Series: Nonstop Communications



Business Problem

- Poor network reliability
 - Affects business process and transaction availability
 - Puts employee productivity, revenue, and profitability at risk

Solution

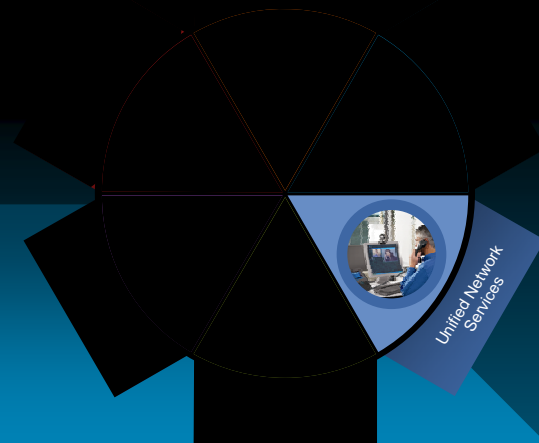
- Sub 50-msec convergence
- Field-replaceable power supply and fan
- Dual hot-swappable power supplies and redundant fans
 - Cisco® Catalyst® 3560E-12D and Catalyst 3560E-12SD Switches
- Cisco Redundant Power System 2300
- Online diagnostics

Benefits

- Continued operations and application availability

Industry First

Cisco Catalyst 3750-E and Catalyst 3560-E Series: Unified Network Services



Business Problem

- Inability of the network to evolve with the business
 - Lack of business flexibility
 - Poor return on investment
 - Business disruptions due to network upgrades

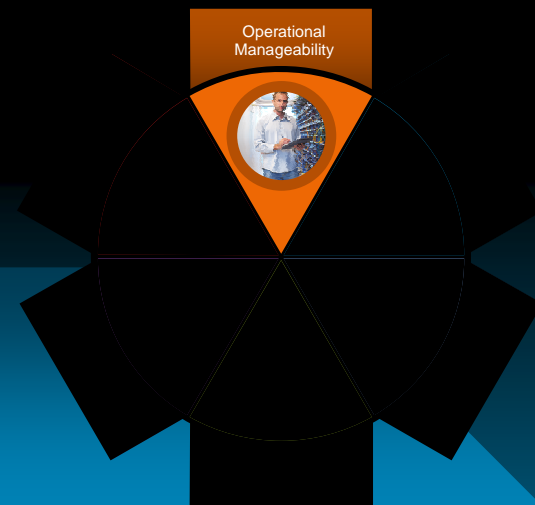
Solution

- Full 15.4W PoE on all 48 ports
- 10-second 10 Gigabit Ethernet upgrade (TwinGig)
- 802.11n support: Scale beyond 15.4W per port
- Backward-compatible Cisco® StackWise® Plus (64 Gbps)
- 24 or 48 10/100/1000 ports
- 2 x 10 Gigabit Ethernet: All models
- Expandable power capacity

Benefits

- Faster deployment for services and applications
- Maximized investment protection
- Flexibility

Cisco Catalyst 3750-E and Catalyst 3560-E Series: Operational Manageability



Business Problem

- High operational complexity and expense
 - Costly
 - Stall innovation and business progress

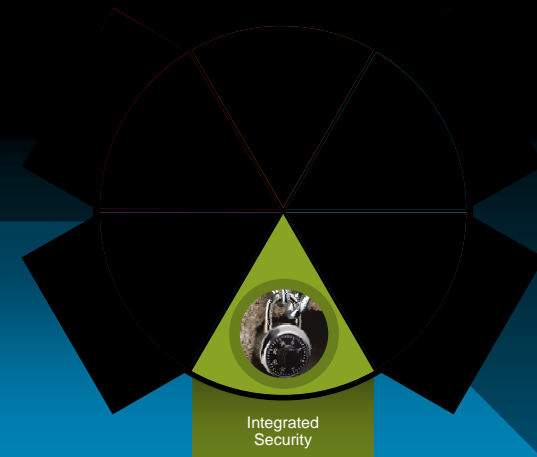
Solution

- Management simplicity with Cisco® StackWise® Plus
- Generic Online Diagnostics (GOLD)
- Intelligent power management
- Out-of-band management
- Robust CiscoWorks
- Cisco Smartports

Benefits

- Simplified manageability
- Continuous proper operation
- Fast and easy configuration

Cisco Catalyst 3750-E and Catalyst 3560-E Series: Integrated Security



Business Problem

- Security threats continue to grow
 - Risks intellectual property loss
 - Lowers employee productivity

Solution

- Support for NAC
- Identity-based services: 802.1x and extensions
- Cisco® Catalyst® Integrated Security Framework (ISF)
- Unicast Reverse Path Forwarding (URPF)
- Secure management
- Port-, Layer 2-, IPv4-, and IPv6-based ACLs

Benefits

- Business continuity
- Company reputation

Extending Flexibility Fixed Aggregation Switch Solutions

New



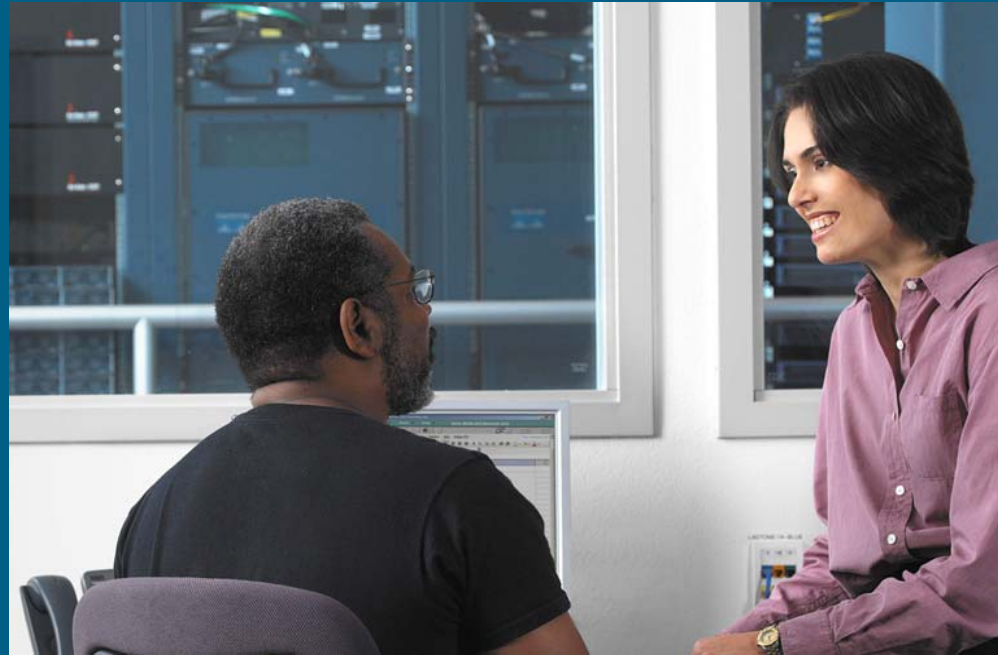
12-Port 10 GE



12-Port GE SFP + 2-Port 10 GE

- 10 GE x 2 transceiver support: SR, LR, ER, CX4, LX4, and LRM
- Cisco® TwinGig Converter Module for mixed GE/10GE uplinks
- 1 rack unit
- Front-to-back cooling
- Dual hot-swappable power supplies (AC and DC)
- Redundant field-replaceable fans
- Layer 3 feature set option from the start: EIGRP, OSPF, and BGPv4
- IPv6 support for increased security and compatibility

Success Stories



Customers Embracing Cisco Catalyst 3750-E and Catalyst 3560-E Series Solutions

Sanford Health

Creates a Better System of Care

Business Challenge

- Creating a better system of care
- Lower latency and increased bandwidth for applications

Digital media services, EPIC (EMR), video, and PACS

Why Cisco Catalyst 3750-E?

- Cisco® as the technology partner
- Integrated security
- 10-second 10 Gigabit Ethernet upgrade
- Two 10 Gigabit uplinks on all models
- Cisco StackWise® Plus (64 Gbps)
- Full 15.4W Power over Ethernet support

Business Results

- One step closer to providing the highest quality of care
- Improved customer experience
- Infrastructure to support AT (DMS and IP telephony)
- Significant competitive advantage

“The Cisco Catalyst® 3750-E Series allowed us to deploy a highly secure, converged network that meets performance demands while delivering the utmost security required by a healthcare organization. It also offers reduced downtime, a critical factor when dealing with factors of health and well-being.”

Daryl Bouma, CTO, Sanford Health

Extending Flexibility with Cisco Catalyst 3560E-12D

Institut Curie

Ready for Future

Business Challenge

- Ability of network to evolve with business needs
- Building a 10 Gigabit-ready network
- Increased bandwidth for applications

Why Cisco Catalyst 3560-E?

- Cisco® as the technology partner
- 12-port 10 Gigabit Ethernet within 1 rack unit
- 10-second 10 Gigabit Ethernet upgrade (TwinGig)

Business Results

- Maximized investment protection
- Ease of integration into an existing network
- Faster deployment for services and applications
- Flexibility

“With the Cisco Catalyst® 3560E-12D, our network became significantly faster, improving the quality of the network infrastructure at the Institut, while maintaining quality of service for day-to-day procedures and system availability.”

Stephane Tsacas, Head of Computer Networking, Institut Curie

Why Cisco?



The Cisco Advantage

Moving Your Network and Business Forward



Cisco Catalyst 3750-E and Catalyst 3560-E Advantage
Flexibility and Investment Protection

This Changes Everything

**Welcome to a
Network Where...**

**...Businesses Transform Themselves
...Network Systems Make It All Possible**

**Welcome to
the Human Network**

