



DATA SHEET



SAVE TIME. SAVE LIVES. SAVE MONEY.

## High-Performance, Real Time Communications Platform

### Introduction

Dispatch professionals in public safety, emergency services and government and industrial command centers rely on a combination of specialized communications systems and tools to maximize situational awareness, collaboration and response times.

Until now, there has not been a single system able to unify the various streams of communication and information to optimize the performance of command center operators.

IP Command has introduced the industry's most advanced platform with high-capacity purpose-built applications and devices that enable dispatch professionals to easily communicate and collaborate with anyone on any device over any type of network.

Our software-based, high-availability VoIP/RoIP platform is designed for round-the-clock mission-critical environments and unlike TDM-based turret systems or specialized dispatch or radio applications offers an integrated, extensible solution for the entire organization.

### Solution Overview

IP Command is a high-performance, session-management platform that truly unifies communications & collaboration across the organization, in essence, "one company, one system."

The IP Command application is fully-integrated with Cisco Unified Communications Manager (CUCM), a scalable, distributable, and highly available enterprise IP telephony call-processing solution and Cisco IP Interoperability and Collaboration System (IPICS), a complete IP-based dispatch and incident response solution.

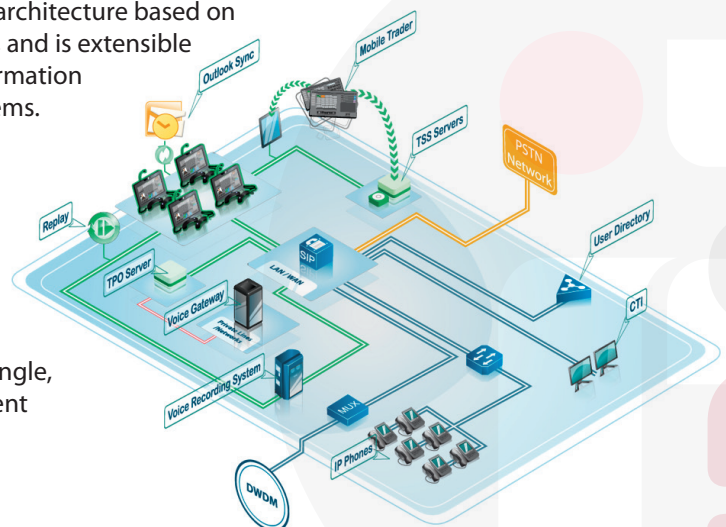
The IP Command solution has a software-oriented architecture based on open standards, like Session Initiated Protocol (SIP), and is extensible to multiple communications technologies and information systems including voice, video, data and radio systems.

### Application Control Plane

The heart of the platform comprises two scalable, high-availability software applications. They are deployed on the customer's unified computing infrastructure leveraging the existing converged IT infrastructure. These applications integrate with the Cisco CUCM and UC&C applications to form a single, unified communications & collaboration environment for all staff irrespective of location, role or device.

### MARKETS

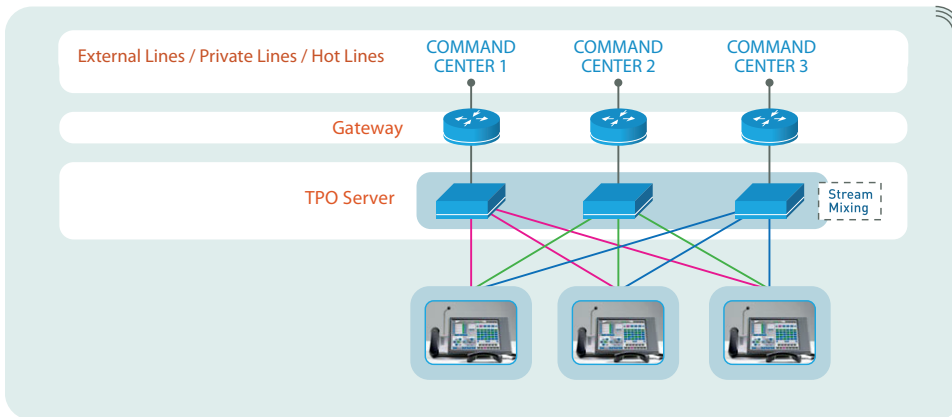
- Government
- Healthcare
- Military
- Public Safety
- Transportation
- Utilities





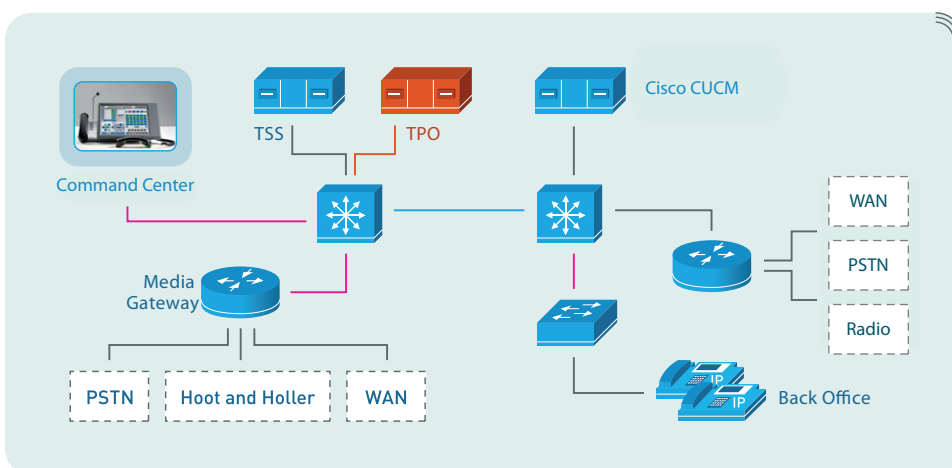
### The Turret Proxy Open Line Dealing Server (TPO)

The TPO is a feature controller with dynamic conferencing technology that provides critical workflow capabilities to all users; Key features include: multiple talk paths, shared one-touch connections and speed dial directories, unlimited barge-in and ad hoc conferencing, hoot n holler, intercom, radio channel monitoring and voice recorder and trunked radio integration.



### The Turret Support Server (TSS)

The TSS is a web-based management and database application that enables system configuration and management and acts as a central repository for user profiles, secure authentication and system data. It also acts as a gateway to other enterprise information systems and applications that may be integrated into the command center operations environment.





### The IP Command Turret

The turret offers command center operators a purpose-built high-capacity form factor with rich graphical touch screen interface that unifies voice, video, data, and radio communications on fixed or mobile networks for users in a single, sturdy, easy-to-use and customizable desktop device which can be built-in to a console or free-standing.

### Features & Benefits

The IP Command T3 Turret Console is a touch screen device that enables dispatch professionals to quickly and easily visualize, prioritize and process many simultaneous streams of communication.

The Unified Communicator UI offers individual or group profiles, a range of peripherals including multiple handsets, gooseneck microphone, wired/wireless headsets, high-fidelity speakers and a built-in video camera.

Each turret can support up to 32 simultaneous media streams, 500 lines and access to 10,000 contacts (refer to Table 1 for other key features).



**Table 1. T3 Turret Console Features & Benefits**

FEATURE	DESCRIPTION
<b>Turret Console</b>	<ul style="list-style-type: none"> <li>• Desk-mounted , industrial-grade, ABS plastic, for heavy use environments</li> <li>• 10" or 15" model</li> <li>• Configurable touch screen UI</li> <li>• Integrated audio/video/radio UI features</li> </ul>
<b>Display</b>	<ul style="list-style-type: none"> <li>• 10" or 15" Option</li> <li>• Multi-color LCD</li> <li>• Max. 120 viewable line appearances/30 speaker channels</li> <li>• Unlimited virtual pages</li> <li>• Configurable fixed function keys – hold/transfer/release/conference/direct page/floating answer</li> </ul>
<b>Speakers</b>	<ul style="list-style-type: none"> <li>• 1-30 speakers per turret</li> <li>• 1-2 separate high-fidelity speaker units</li> <li>• Master volume knob per speaker unit</li> <li>• Individual volume control/LED activity indicator per channel (turret UI)</li> <li>• Multiple muting/broadcast options</li> </ul>
<b>Media Channels</b>	<ul style="list-style-type: none"> <li>• 2 x handset (or handset/headset); audio/video streaming to max. 30 channels</li> </ul>
<b>Capacity</b>	<ul style="list-style-type: none"> <li>• Max. 500 lines per turret console/10,000 virtual button appearances for lines, speed dials, intercom and features</li> </ul>
<b>Call-Handling</b>	<ul style="list-style-type: none"> <li>• Unlimited barge-in, shared lines, conferencing and privacy/privacy release</li> <li>• Programmable color styles</li> <li>• Differentiated ringing profiles</li> <li>• Private and corporate contact directories</li> <li>• Private and group intercom directories</li> <li>• Line labeling up to 32 characters with auto font adjustment</li> <li>• Inbound caller ID matching and display</li> </ul>
<b>Recording</b>	<ul style="list-style-type: none"> <li>• Compatible with most major recorders</li> <li>• Call Data Records (CDR) output</li> </ul>

**Table 2. T3 Turret Console Specifications**

FEATURE	DESCRIPTION
<b>Case Composition</b>	<ul style="list-style-type: none"><li>• Acrylonitrile Butadiene Styrene (ABS) Plastic Textured in Dark Gray Color</li></ul>
<b>Dimensions</b>	<ul style="list-style-type: none"><li>• Adjustable angle display 25–60 degrees</li><li>• (H) 400mm x (W) 273mm x (D) 85mm (with XMA)</li><li>• 3.6 Kg (with XMA)</li></ul>
<b>Power</b>	<ul style="list-style-type: none"><li>• Voltage</li><li>• Frequency</li><li>• DC Output</li><li>• PoE</li><li>• Power Adapter P/N: 63000-FSP096AHB-RS 96W Power Adapter</li><li>• 96W Power Adapter</li><li>• Input: 90VAC~264VAC,50/60Hz</li><li>• Output: 12VDC</li><li>• Power Requirement: 12VDC</li><li>• Power Consumption: 90W</li><li>• UPOE Compliant</li><li>• UPOE splitter Part # WS-UPOE-12VPSPL Required</li></ul>
<b>Call Control Software</b>	<ul style="list-style-type: none"><li>• Cisco CUCM 6.2 (or later release)</li></ul>
<b>Signaling Protocols</b>	<ul style="list-style-type: none"><li>• SIP (standard and extended)</li></ul>
<b>Codec</b>	<ul style="list-style-type: none"><li>• G.711μ, G.711a, iLBC (Internet Low BitRate Codec)</li></ul>
<b>Networking</b>	<ul style="list-style-type: none"><li>• 3 switched 10/100/1000 Ethernet ports (with XMA)</li><li>• Ethernet redundancy</li><li>• Sub sec convergence</li><li>• IEEE.802.1x (with XMA)</li><li>• IEEE.802.1p/q VLAN tagging and trunking (with XMA)</li><li>• Rapid spanning tree 802.1w (with XMA)</li><li>• DHCP (with option)</li><li>• Diffserv per device (QoS) (not with XMA)</li><li>• ToS per device (not with XMA)</li><li>• IP Multicast Video (audio with TPO, with XMA in R7.3)</li><li>• SNMP monitoring</li></ul>
<b>Security</b>	<ul style="list-style-type: none"><li>• Turret</li><li>• Windows XP &amp; 7 Embedded OS (closed system)</li><li>• Supervision mode password protected</li><li>• Disablement of USB storage devices</li><li>• TSS &amp; TPO</li><li>• Microsoft certified Anti-Virus software (exclusions apply)</li><li>• Zone only Administration</li></ul>
<b>VoIP Networks</b>	<ul style="list-style-type: none"><li>• SIP (standard and extended)</li><li>• Supported Codec types on WAN: G.711μ, G.711a, iLBC (Internet Low BitRate Codec)</li><li>• Max packet loss on the LAN</li><li>• Bandwidth Optimization: VAD (Voice Activity Detection) Our use of VAD does not provide any bandwidth optimization)</li><li>• Diffserv per device (QoS) (not with XMA)</li><li>• ToS per device (not with XMA)</li><li>• IEEE.802.1p/q VLAN tagging and trunking (with XMA)</li></ul>
<b>Recording</b>	<ul style="list-style-type: none"><li>• Active</li><li>• Separated mode</li><li>• Up to 32 IP recording streams</li><li>• Mixed mode</li><li>• 1 to 10 configurable IP recording streams</li><li>• Dual stream recording redundancy</li><li>• 1 to 4 configurable IP recording streams</li></ul>

Table 3. *Temperature Ratings*

VARIABLE	DESCRIPTION
<b>Operating Temp.</b>	32–104° F (0–40 C) -10°C ~50°C
<b>Relative Humidity</b>	10–95% non-condensing
<b>Storage Temp.</b>	14–140° F (-10–60 C) -20°C ~60°C

Table 4. *Ordering Information – Turrets/Licenses*

PART NUMBER	DESCRIPTION	
<b>L-IPT3203-SW-P=</b>	T3 Touchscreen turret software with 3 speaker channels bundle	Cisco price list
<b>IPT-PRO-T3203-BUN-HW</b>	T3 Touchscreen turret with 3 speaker channels bundle – Includes one (1) power supply (Int'l power supply pack) – two (2) RJ11 PTT or PTM handsets	Tech Data
<b>L-IPT3210-SW-P=</b>	T3 Touchscreen turret software with 10 speaker channels bundle	Cisco price list
<b>IPT-PRO-T3210-BUN-HW</b>	T3 Touchscreen turret with 10 speaker channels bundle – Includes one (1) power supply (Int'l power supply pack) – two (2) RJ11 PTT or PTM handsets	Tech Data
<b>L-IPT3230-SW-P=</b>	T3 Touchscreen turret software with 3 speaker channels	Cisco price list
<b>IPT-PRO-T3230-BUN-HW</b>	T3 Touchscreen turret with 3 speaker channels bundle – Includes one (1) power supply (Int'l power supply pack) – two (2) RJ11 PTT or PTM handsets	Tech Data
<b>L-IPT-TPO400-SW-P=</b>	TPO Application Software – 400 concurrent channels	Cisco price list
<b>L-IPT-PROSRV-SW-P=</b>	TSS Application Software edition	Cisco price list
<b>L-IPT-ICOM-9971=</b>	Intercom License for Cisco Deskphones one license per deskphone – for Cisco 9971 devices only	Cisco price list

Table 5. *Ordering Information – Accessories and Maintenance – from Tech Data*

PART NUMBER	DESCRIPTION
<b>IPT-PLA-D1</b>	Private line gateway 1T1/E1 port – delivered with IP Trade PLAD
<b>IPT-PRO-HDS-SER3</b>	Profile series handset – HiFi audio – Push-to-talk or Push-to-mute switchable
<b>IPT-PRO-MIC-EXT-50</b>	Profile series external microphone 50cm length
<b>IPT-PRO-SPK-AMP</b>	External IP Trade amplified speaker – includes one (1) speaker and one (1) power supply cable
<b>IPT-PRO-FTPDL</b>	External USB foot pedal
<b>IPT-PRO-TAD-ENT=</b>	TAD (Touchscreen Assistant Device) 15" screen including one (1) handset and (1) power supply (Int'l power supply pack)
<b>IPT-PRO-MAINT-EXT</b>	Extended Maintenance – 12 months, per unit
<b>IPT-PRO-INST-SERV</b>	Standard installation package – 4 days
<b>IPT-PRO-MAINT-EXT-ICOM</b>	Extended Maintenance for iCOM 3300 – 12 months, per unit

## SUMMARY

As part of the Cisco Developer Network (CDN) and SolutionsPlus Program, IP Command is certified as part of a comprehensive solution available from a single source that includes network infrastructure, security, wireless, management applications, lifecycle services, flexible deployment and outsourced management options.

By deploying IP Command's application on the network, organizations are able to leverage the security, resilience, and scalability of their network to enable users to connect anywhere, anytime, and anyplace, using any media or device.