

Cisco ONS 15310-MA SONET Multiservice Platform—At-A-Glance

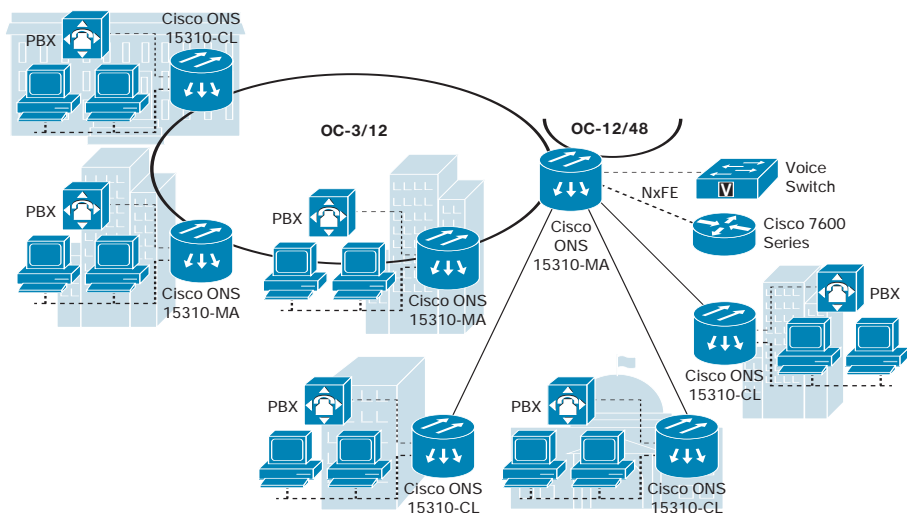
High-Density Multiservice Metropolitan Aggregation Platform for Service Provider and Enterprise Telecommunication Applications

The Cisco ONS 15310-MA

The Cisco® ONS 15310-MA is the second platform in the ONS 15310 Series. The Cisco ONS 15310-CL platform is optimized for customer-located multiservice applications and supports the delivery of a mix of DS-1, DS-3/EC-1, and Ethernet services. The Cisco ONS 15310-MA platform extends this successful design to add additional time-division multiplexing (TDM) and Ethernet capacity, as well as controller and switch fabric redundancy and extended temperature range (ITEMP) support.

What Problems Need to be Solved?

The Cisco ONS 15310-MA sits between the smaller ONS 15310-CL and the larger ONS 15454 platforms in terms of capacity. The Cisco ONS 15310-MA offers a solution for Ethernet+TDM applications that require OC-48 trunks and full platform redundancy, but will not grow to require an OC-192-capable platform such as the ONS 15454. The Cisco ONS 15310-MA is GR-3108 compliant for extended environment temperature applications. Examples where the Cisco ONS 15310-MA fits well include applications for carrier metro aggregation, for wireless carrier backhaul from cell towers, and for large business customers who lease SONET facilities directly from carriers.



Cisco Optical Multiservice Provisioning Platforms

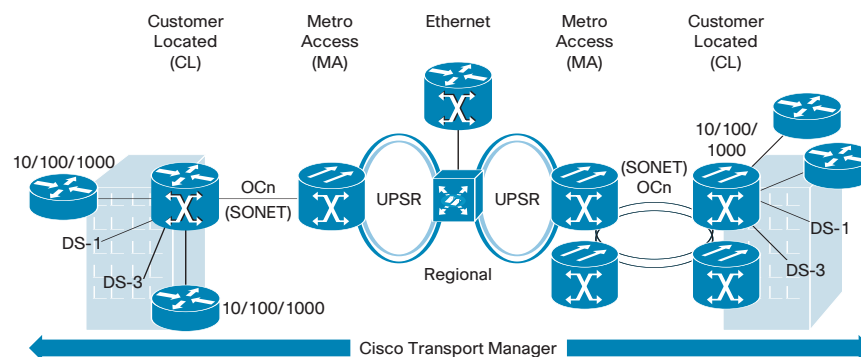
The Cisco ONS 15310-MA is a component of the comprehensive Cisco portfolio of optical transport equipment that also includes:

- Cisco ONS 15454 Multiservice Provisioning Platform, capable of supporting DS-1 through OC-192 TDM services, Ethernet, storage, and advanced Cisco Reconfigurable Add/Drop Multiplexing (ROADM)-capable DWDM
- Cisco ONS 15310-CL Edge Multiservice Platform, providing up to 21 DS-1, 3 DS-3/EC-1, and 8 Ethernet ports in a compact 1-rack-unit (1RU)-high chassis optimized for customer premises applications
- Cisco ONS 15600 Core Switching Platform, capable of terminating up to 32 OC-192 interfaces or 128 OC-48 interfaces within a single chassis for core multiservice applications

Benefits of the Cisco ONS 15310-MA

The Cisco ONS 15310-MA combines the service flexibility and redundancy of the Cisco ONS 15454 with the smaller size of the Cisco ONS 15310-CL. In fact, the ONS 15310-MA is 6RU high, but narrow enough that two systems can be mounted side by side in a standard 23-inch-wide rack to double effective capacity. Despite its compact size, each Cisco ONS 15310-MA chassis can support a mix of the following:

- Up to 168 DS-1 and 6 DS-3/EC-1 interfaces
- Up to 32 10/100 Ethernet interfaces
- Quad OC-3, OC-12, or OC-48 SONET uplinks



Why Cisco?

Cisco has achieved tremendous success with its optical multiservice platforms, with more than 50,000 Cisco ONS 15454 products deployed to date. Only Cisco can provide an end-to-end optical transport solution that combines Metro Ethernet Forum (MEF)-certified Ethernet and TDM delivery that can also meet the stringent IP service-level agreements (SLAs) needed for low-latency data services, such as voice over IP (VoIP) and IPTV. Furthermore, the Cisco ONS 15310-MA is backed by Cisco outstanding customer service and technical support.

