



PRODUCT BULLETIN, NO. 2655

## CISCO SYSTEMS ANNOUNCES THE NEW CISCO ONS 15310-CL SONET MULTISERVICE PLATFORM

The Cisco® ONS 15310-CL SONET Multiservice Platform is an economical, 1-rack unit (1RU)-high delivery platform optimized for use as the last network element, at the customer location (CL), in a service provider's network or for use as an end node in enterprise or campus environments. The Cisco ONS 15310-CL interoperates with and takes advantage of the proven technology pioneered by the Cisco ONS 15454, the industry's leading multiservice optical transport platform (Figure 1).

**Figure 1**

Cisco ONS 15310-CL SONET Multiservice Platform



### INTEGRATED OPTICAL NETWORKING

The Cisco ONS 15310-CL efficiently aggregates data, voice, and video services for transport. The platform effectively supports TDM and 10/100-Mbps Ethernet, and it provides integrated data-switching and cross-connect functions. Various data streams can be carried separately or together and transported in a one-for-one dedicated bandwidth mode or in a concentrated mode with no limit on the oversubscription ratio.

With the ability to transparently integrate into SONET networks, and an expansion slot providing the modularity to meet changing network needs, the Cisco ONS 15310-CL helps transform today's TDM-based transport networks into flexible, data-intensive superhighways.

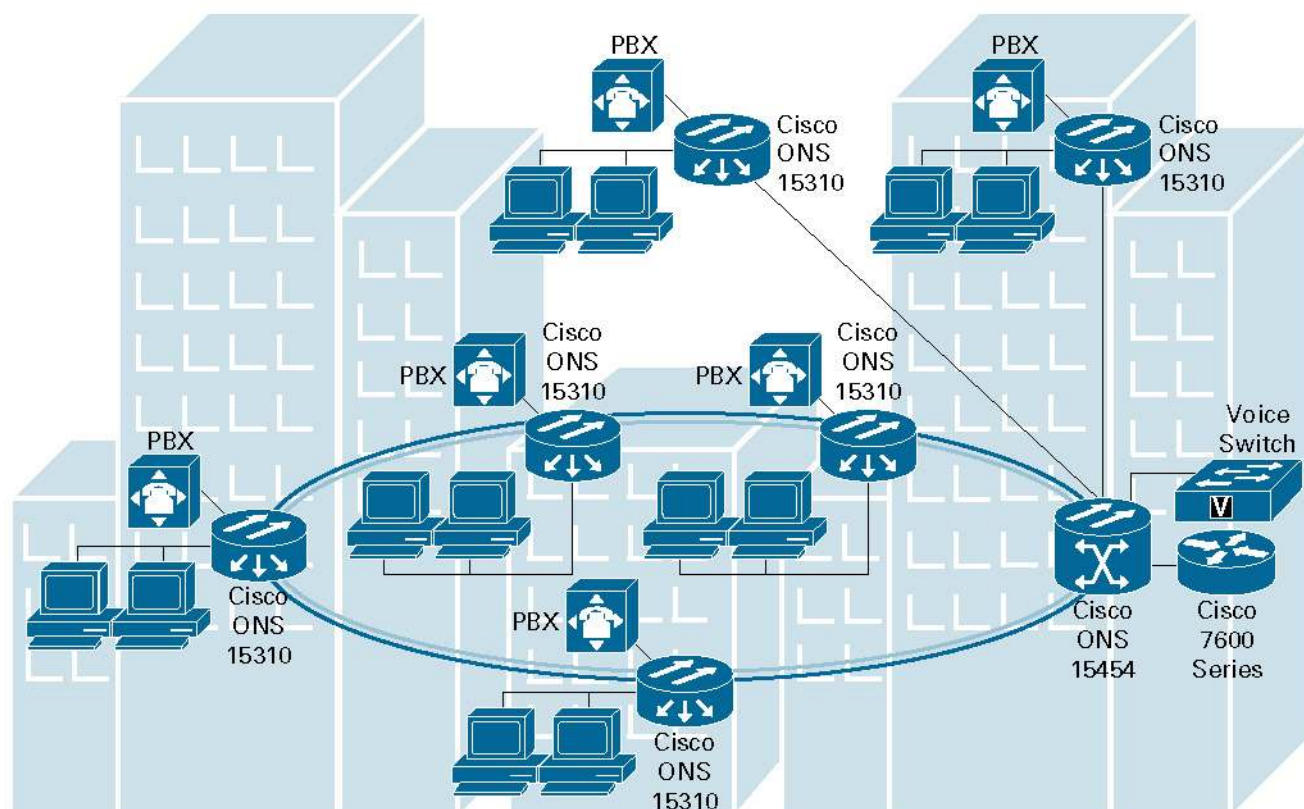
Although many transport products claim to handle today's data and voice traffic, they lack the ability to provide effective bandwidth management for higher-speed IP-based data services. Many of these platforms require significant setup time and are difficult to provision. The Cisco ONS 15310-CL offers optimized bandwidth for high-speed IP-based data services, rapid service provisioning, and multiple optical interfaces through Small Form-Factor Pluggable (SFP) optics for flexible SONET networking (Figure 2).

### ACCELERATED NETWORK ECONOMIC VALUE

The integrated multiservice optical networking functions of the Cisco ONS 15310-CL dramatically reduce service-delivery costs. Packaged in a 1RU, industrially temperature-hardened Network Equipment Building Standards (NEBS) 3-compliant assembly, the Cisco ONS 15310-CL delivers fast provisioning and low initial cost, while maintaining a small footprint and low operational cost throughout the life of the product.

**Figure 2**

The Cisco ONS 15310-CL Delivers Multiservices on Demand to the Customer Location and Metropolitan Edge



## AVAILABILITY

Equipment and software for Cisco ONS 15310-CL SONET Multiservice Platform Release 5.0.0 will be orderable during the first week of December 2004, with equipment shipment beginning approximately 30 days after orderability. Contact your Cisco sales representative for more details.

## ORDERING INFORMATION

The Cisco ONS 15310-CL SONET Multiservice Platform equipment and software can be ordered from your Cisco sales representative or through the Cisco.com online ordering tool. Specific product codes and descriptions are detailed in Table 1.

**Table 1.** Product Part Numbers and Descriptions

Product ID	Description
15310-R5.0.0SWK9=	Release 5.0.0 Feature Package, CD, Right To Use License
SF15310-R5.0.0K9	Release 5.0.0 Software, preloaded on Cisco ONS 15310-CL
15310-DOC5.0.0PP=	Sys Doc Release 5.0.0 English, paper
15310-DOC5.0.0CD=	Sys Doc Release 5.0.0 English, CD

Product ID	Description
15310-CL-DC-SA-K9=	Cisco ONS 15310 customer-located DC chassis subassembly includes 2 DC power connectors and 19/23-in. rack mount brackets
15310-CL-AC-SA-K9=	Cisco ONS 15310 customer-located AC chassis subassembly includes one 2.5 m AC power cord and 19/23-in. rack mount brackets
15310-ML-100T-8=	ML-Series 8-port 10/100 Switched Ethernet Card
15310-CE-100T-8=	CE-Series 8-port 10/100 Carrier Ethernet Card
15310-LFH-AMP-10=	DS1 cable assembly, LFH-AMP connectors, 10 ft
15310-EXP-FILLER=	Cisco ONS 15310 blank expansion module
15310-CL-SHIPKIT=	Shelf installation accessories kit; spare AC power cord, DC connectors, 19/23-in. brackets
15310-MINIBNC-30=	DS3 cable assembly, 30 ft, BNC to Mini-BNC
15310-TIE-BAR-19=	Cable mgmt. tie-down bar for 19-in. rack
15310-TIE-BAR-23=	Cable mgmt. tie-down bar for 23-in. rack
ONS-SI-155-I1	OC-3/STM-1 intermediate reach (IR), 1310 nm, SFP, ITEMP
ONS-SI-155-I1=	OC-3/STM-1 IR, 1310 nm, SFP, ITEMP
ONS-SI-155-L1	OC-3/STM-1 long reach (LR), 1310 nm, SFP, ITEMP
ONS-SI-155-L1=	OC-3/STM-1 LR, 1310 nm, SFP, ITEMP
ONS-SI-155-L2	OC-3/STM-1 LR, 1550 nm, SFP, ITEMP
ONS-SI-155-L2=	OC-3/STM-1 LR, 1550 nm, SFP, ITEMP
ONS-SI-622-I1	OC-12/STM-4 and OC-3/STM-1 IR, 1310 nm, SFP ITEMP
ONS-SI-622-I1=	OC-12/STM-4 and OC-3/STM-1 IR, 1310 nm, SFP ITEMP
ONS-SI-622-L1	OC-12/STM-4 LR, 1310 nm, SFP, ITEMP
ONS-SI-622-L1=	OC-12/STM-4 LR, 1310 nm, SFP, ITEMP
ONS-SI-622-L2	OC-12/STM-4 LR, 1550 nm, SFP, ITEMP
ONS-SI-622-L2=	OC-12/STM-4 LR, 1550 nm, SFP, ITEMP

**Note:** The systems and products described in this document are subject to new product hold, a status assigned to all new items that have not yet transacted through the Cisco Systems® manufacturing system and may not be available. Thus, product delivery dates can vary past the quoted first customer shipment (FCS) date.

## FOR MORE INFORMATION

For more information about the Cisco ONS 15300 Series optical platforms, visit:

<http://www.cisco.com/en/US/products/hw/optical/ps2001/index.html>

To order Cisco equipment, visit: <http://www.cisco.com>.

**Corporate Headquarters**

Cisco Systems, Inc.  
170 West Tasman Drive  
San Jose, CA 95134-1706  
USA  
www.cisco.com  
Tel: 408 526-4000  
800 553-NETS (6387)  
Fax: 408 526-4100

**European Headquarters**

Cisco Systems International BV  
Haarlerbergpark  
Haarlerbergweg 13-19  
1101 CH Amsterdam  
The Netherlands  
www-europe.cisco.com  
Tel: 31 0 20 357 1000  
Fax: 31 0 20 357 1100

**Americas Headquarters**

Cisco Systems, Inc.  
170 West Tasman Drive  
San Jose, CA 95134-1706  
USA  
www.cisco.com  
Tel: 408 526-7660  
Fax: 408 527-0883

**Asia Pacific Headquarters**

Cisco Systems, Inc.  
168 Robinson Road  
#28-01 Capital Tower  
Singapore 068912  
www.cisco.com  
Tel: +65 6317 7777  
Fax: +65 6317 7799

Cisco Systems has more than 200 offices in the following countries and regions. Addresses, phone numbers, and fax numbers are listed on the **Cisco Website at [www.cisco.com/go/offices](http://www.cisco.com/go/offices).**

Argentina • Australia • Austria • Belgium • Brazil • Bulgaria • Canada • Chile • China PRC • Colombia • Costa Rica  
Croatia • Cyprus • Czech Republic • Denmark • Dubai, UAE • Finland • France • Germany • Greece • Hong Kong SAR  
Hungary • India • Indonesia • Ireland • Israel • Italy • Japan • Korea • Luxembourg • Malaysia • Mexico  
The Netherlands • New Zealand • Norway • Peru • Philippines • Poland • Portugal • Puerto Rico • Romania • Russia  
Saudi Arabia • Scotland • Singapore • Slovakia • Slovenia • South Africa • Spain • Sweden • Switzerland • Taiwan  
Thailand • Turkey • Ukraine • United Kingdom • United States • Venezuela • Vietnam • Zimbabwe

Copyright © 2004 Cisco Systems, Inc. All rights reserved. Cisco, Cisco Systems, and the Cisco Systems logo are registered trademarks or trademarks of Cisco Systems, Inc. and/or its affiliates in the United States and certain other countries.

All other trademarks mentioned in this document or Website are the property of their respective owners. The use of the word partner does not imply a partnership relationship between Cisco and any other company. (0406R)  
Pa/LW7233 11/04