



## DATA SHEET

# CISCO ROUTE MANAGER 2.3

## PRODUCT OVERVIEW

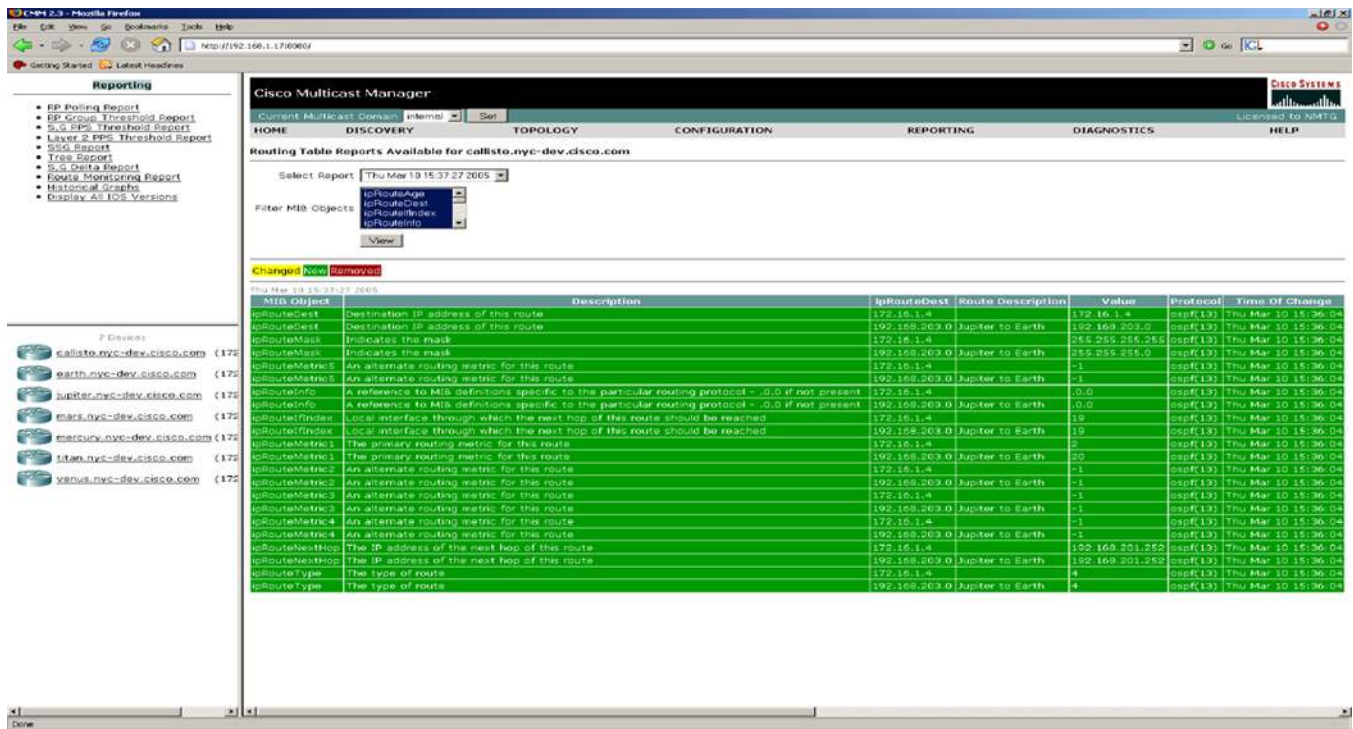
The Cisco Route Manager is a Web-based software application that is designed to send alerts and produce detailed reports upon any route deletions, additions, or changes in selected routers. It supports both unicast and multicast routing tables. The routing tables can be checked at configurable intervals or on demand. The Cisco® Route Manager is a Simple Network Management Protocol (SNMP)-based software application that runs on Solaris or Linux. The user interface is a browser. The Cisco Route Manager scans each MIB in the routing tables for unicast and/or multicast routes and reports on any changes since the previous scan.

The number of routers that can be scanned is configurable as well as the time between scans. Prior to a scan, the Cisco Route Manager checks the router's CPU and if the percentage is greater than a configured threshold then it does not scan the route table and moves onto the next router. If there are changes in the routing table, an SNMP trap is sent. Users can then go to the reporting menu on the Cisco Route Manager and see exactly what changed. The reports will include a color-coded, line-by-line explanation of what changed.

When scheduled polling is enabled, the total number of routes that exist is kept for historical purposes, and reports can then be generated with regard to the size of the routing tables over a period of time.

Cisco Route Manager is ideal for users who want to keep track of the number of routes that exist and also receive alerts indicating when and why routes change. Users can also receive e-mail when routes change.

Figure 1. Cisco Route Manager Report



## APPLICATIONS

Cisco Route Manager is ideal for any customers looking to monitor the changes in their routing tables or needing to verify the contents of these tables before or after some configuration or network changes. It can be run at scheduled intervals or on demand when some changes have occurred and route-table verification is need. Cisco Route Manager works with any Cisco router running Cisco IOS® Software and it requires SNMP read access to the routers.

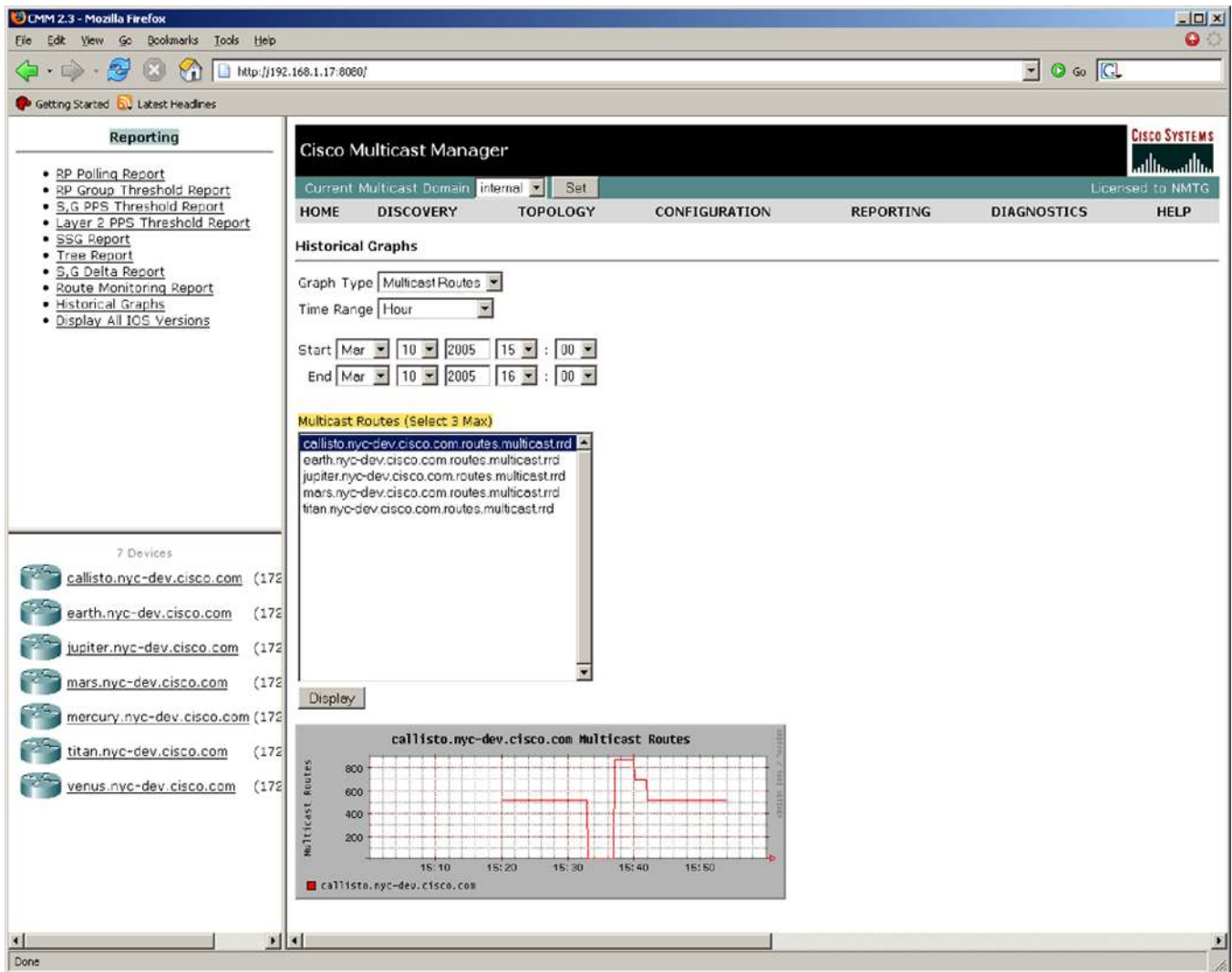
Customers who are trying to determine the number of routes that should exist in particular routers can obtain historical reports from the Cisco Route Manager.

## KEY FEATURES AND BENEFITS

Cisco Route Manager delivers a comprehensive reporting tool that allows users an in-depth look into their routers and routing tables. The Cisco Route Manager offers the following capabilities:

- Report on any new, changed, or deleted unicast routes
- Report on any new, changed, or deleted multicast routes
- Provide historical reports regarding the number of unicast and multicast routes existing over a period of time (Figure 2)
- Can run at scheduled intervals or on demand
- Can customize the reports to display only the required information

**Figure 2.** Generating Historical Graphs Using the Cisco Route Manager



## PRODUCT ARCHITECTURE

Cisco Route Manager is a software solution that runs on Solaris 8 or 9, or Red Hat Enterprise Linux. The Web-based user interface supports most common browsers and requires no additional software.

## SUMMARY

Cisco Route Manager can alert users of routing-table changes to any routers in the network. It can send alerts and produce detailed reports on routes that have been added, changed, or deleted and also sends an SNMP trap. It can be run at scheduled times but can also be run only when needed, such as before or after any network changes or updates. Tables 1 and 2 list the product specifications and system requirements for the Cisco Route Manager 2.3.

## PRODUCT SPECIFICATIONS

**Table 1.** Product Specifications

<b>Product Compatibility</b>	Cisco IOS routers
<b>Software Compatibility</b>	Cisco IOS Software
<b>Protocols</b>	SNMP, IP
<b>MIBS</b>	IP routing table and multicast routing table

## SYSTEM REQUIREMENTS

**Table 2.** System Requirements

<b>Disk Space</b>	300 MB
<b>Hardware</b>	Intel Pentium III 1GHz
<b>Memory</b>	1 GB RAM
<b>Software</b>	Solaris 8/9, Red Hat Enterprise Linux

## ORDERING INFORMATION

To place an order, visit the [Cisco Ordering Home Page](#). Table 3 lists the ordering information for the Cisco Route Manager 2.3.

**Table 3.** Ordering Information

<b>Product Name</b>	<b>Part Number</b>
<b>CRM-2.3-LIN</b>	Cisco Route Manager 2.3 for Linux
<b>CRM-2.3-SOL</b>	Cisco Route Manager 2.3 for Solaris

## SERVICE AND SUPPORT

Cisco Systems® offers a wide range of services programs to accelerate customer success. These innovative services programs are delivered through a unique combination of people, processes, tools, and partners, resulting in high levels of customer satisfaction. Cisco services help you to protect your network investment, optimize network operations, and prepare the network for new applications to extend network intelligence and the power of your business. For more information about Cisco services, see [Cisco Technical Support Services](#) or [Cisco Advanced Services](#).

## FOR MORE INFORMATION

For additional product information, visit: <http://www.cisco.com/en/US/products/ps6336/index.html> or contact your local Cisco account representative.

**Corporate Headquarters**

Cisco Systems, Inc.  
170 West Tasman Drive  
San Jose, CA 95134-1706  
USA  
www.cisco.com  
Tel: 408 526-4000  
800 553-NETS (6387)  
Fax: 408 526-4100

**European Headquarters**

Cisco Systems International BV  
Haarlerbergpark  
Haarlerbergweg 13-19  
1101 CH Amsterdam  
The Netherlands  
www-europe.cisco.com  
Tel: 31 0 20 357 1000  
Fax: 31 0 20 357 1100

**Americas Headquarters**

Cisco Systems, Inc.  
170 West Tasman Drive  
San Jose, CA 95134-1706  
USA  
www.cisco.com  
Tel: 408 526-7660  
Fax: 408 527-0883

**Asia Pacific Headquarters**

Cisco Systems, Inc.  
168 Robinson Road  
#28-01 Capital Tower  
Singapore 068912  
www.cisco.com  
Tel: +65 6317 7777  
Fax: +65 6317 7799

Cisco Systems has more than 200 offices in the following countries and regions. Addresses, phone numbers, and fax numbers are listed on the Cisco Website at [www.cisco.com/go/offices](http://www.cisco.com/go/offices).

Argentina • Australia • Austria • Belgium • Brazil • Bulgaria • Canada • Chile • China PRC • Colombia • Costa Rica • Croatia • Cyprus  
Czech Republic • Denmark • Dubai, UAE • Finland • France • Germany • Greece • Hong Kong SAR • Hungary • India • Indonesia • Ireland • Israel  
Italy • Japan • Korea • Luxembourg • Malaysia • Mexico • The Netherlands • New Zealand • Norway • Peru • Philippines • Poland • Portugal  
Puerto Rico • Romania • Russia • Saudi Arabia • Scotland • Singapore • Slovakia • Slovenia • South Africa • Spain • Sweden • Switzerland • Taiwan  
Thailand • Turkey • Ukraine • United Kingdom • United States • Venezuela • Vietnam • Zimbabwe

Copyright © 2005 Cisco Systems, Inc. All rights reserved. CCSP, CCVP, the Cisco Square Bridge logo, Follow Me Browsing, and StackWise are trademarks of Cisco Systems, Inc.; Changing the Way We Work, Live, Play, and Learn, and iQuick Study are service marks of Cisco Systems, Inc.; and Access Registrar, Aironet, ASIST, BPX, Catalyst, CCDA, CCDP, CCIE, CCIP, CCNA, CCNP, Cisco, the Cisco Certified Internetwork Expert logo, Cisco IOS, Cisco Press, Cisco Systems, Cisco Systems Capital, the Cisco Systems logo, Cisco Unity, Empowering the Internet Generation, Enterprise/Solver, EtherChannel, EtherFast, EtherSwitch, Fast Step, FormShare, GigaDrive, GigaStack, HomeLink, Internet Quotient, IOS, IP/TV, iQ Expertise, the iQ logo, iQ Net Readiness Scorecard, LightStream, Linksys, MeetingPlace, MGX, the Networkers logo, Networking Academy, Network Registrar, *Packer*, PIX, Post-Routing, Pre-Routing, ProConnect, RateMUX, ScriptShare, SlideCast, SMARTnet, StrataView Plus, TeleRouter, The Fastest Way to Increase Your Internet Quotient, and TransPath are registered trademarks of Cisco Systems, Inc. and/or its affiliates in the United States and certain other countries.

All other trademarks mentioned in this document or Website are the property of their respective owners. The use of the word partner does not imply a partnership relationship between Cisco and any other company. (0502R)

205224.bc\_ETMG\_LF\_4.05

