

Cisco Prime Network Analysis Module



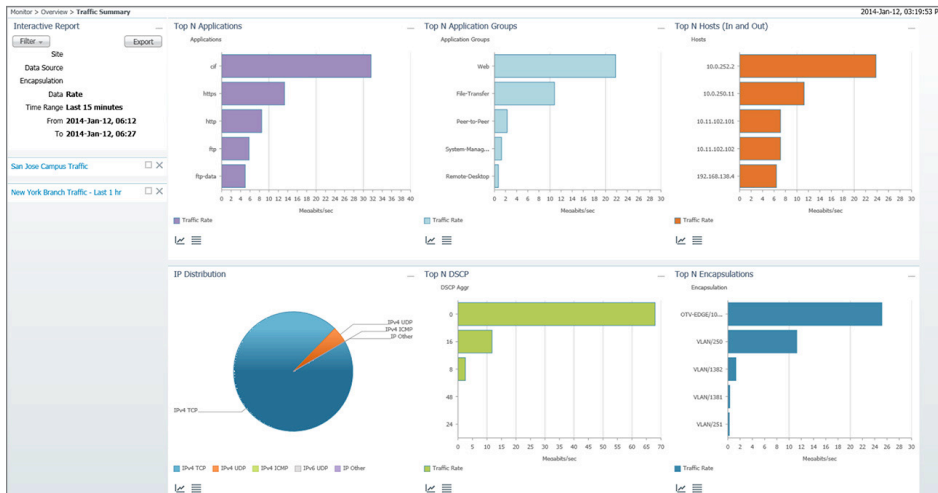
ENSURE CONSISTENT AND EFFICIENT DELIVERY OF APPLICATIONS AND SERVICES

Virtualization and cloud create exciting business transformation opportunities, innovative service delivery models, and improved economics. To maintain effective service delivery in this dynamic environment, Cisco Prime™ Network Analysis Module (NAM) empowers network administrators with multifaceted visibility to help optimize network resources, troubleshoot performance issues, and deliver consistent end-user experience. The Cisco Prime NAM portfolio includes form-factor choices that can be deployed to meet diverse performance analysis needs specific to remote sites, campus, data center, and cloud.

With Cisco Prime NAM, you can:

- Characterize application performance and usage of network resources
- Extend visibility into overlay technologies and virtual machine (VM) networks
- Accelerate problem resolution with quick access to critical network information (Figure 1)
- Validate use of control and optimization mechanisms and measure the impact of operational changes such as server consolidation, VM migration, and WAN optimization
- Extract performance and usage analytics in real time with REST/XML API

Figure 1. Traffic Summary View



Feature Highlights

The key features of Cisco Prime NAM Software include:

- Interactive dashboards with purpose-designed workflows, contextual navigation, and one-click captures
- Comprehensive traffic statistics and application and voice/video performance metrics
- Visibility into overlay networks such as OTV, LISP, and VXLAN
- Detailed troubleshooting with insightful packet captures, advanced filters, and error scan
- Centralized management with [Cisco Prime Infrastructure](#)

Business Benefits

Cisco Prime NAM helps network administrators with network insights to quickly respond to changing business needs:

- Deliver consistent and resilient services
- Ensure smooth network operations
- Enhance the user's application experience
- Streamline rollout of new services

Cisco Prime NAM Product Family

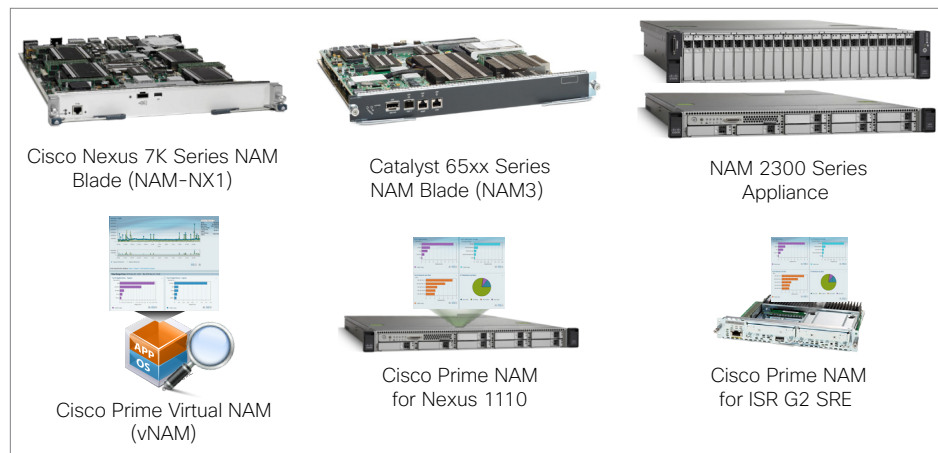
The Cisco Prime NAM product portfolio (Figure 2) includes:

- **Cisco Nexus® 7000 NAM (NAM-NX1):** As a high-performance solution, this integrated service module delivers application visibility and performance analytics in the physical and virtual data center.
- **Cisco Prime Virtual NAM (vNAM):** Unshackled from hardware constraints, this virtual form factor delivers the versatility to help rapidly tune network operations whenever required to respond to new business demands.
- **Cisco Catalyst® 6500 Series NAM (NAM-3):** Addressing the application visibility need in enterprises, this integrated service module helps enable high throughput traffic analysis, application performance monitoring, and detailed troubleshooting.
- **Cisco Prime NAM Appliances (NAM 2304, NAM 2320):** As purpose-built appliances, they offer deployment flexibility to address monitoring and packet analysis needs in data center, campus, WAN edge, and service provider networks.



- **Cisco Prime Network Analysis Module for Cisco Nexus 1110/1010:** Integrated with the Cisco Nexus 1000V infrastructure, this virtual service blade enriches Cisco's cloud service platform.
- **Cisco Prime Network Analysis Module for ISR G2 SRE:** This software, integrated with Cisco ISR second-generation (G2) SM-SRE-700 and SM-SRE-900 platforms, offers multiservice visibility, traffic analysis, and troubleshooting at remote sites in Cisco enterprise networks.

Figure 2. Cisco Prime NAM Product Portfolio



Why Cisco?

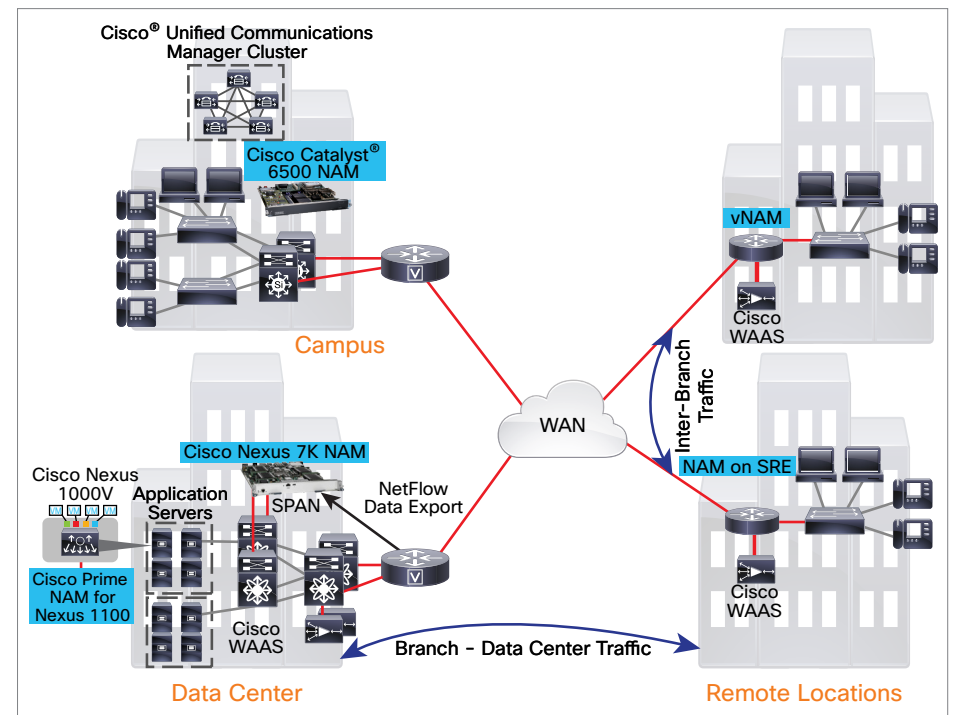
Cisco Prime NAM delivers pervasive application intelligence. It extends visibility into virtualized and cloud networks and overlay technologies to help assure distributed and efficient services delivery. Cisco Prime NAM embraces a service-centered approach for analysis by uniquely combining packet- and flow-based network analytics in a single solution. It weaves together application awareness, performance statistics, usage metrics, and contextual packet captures into a single workflow. The embedded web-based user interface allows administrators to access the NAM any time and anywhere for real-time, fine-grained visibility, improving productivity and eliminating travel needs.

Cisco Prime NAM is available as an integrated service module or virtual service blade that is a part of the Cisco switch or router infrastructure (Figure 3). Integrated with the infrastructure, Cisco Prime NAM is able to extract the packets right from the backplane, producing accurate and reliable data collection and analytics.

It accelerates time to value with immediate access to specific VLANs, IP/MAC addresses, and applications of interest, eliminating lengthy change control processes. Cisco Prime NAMs can also be deployed as standalone appliances, maximizing deployment flexibility across the network.

Cisco NAM preserves your investments in existing management assets, offering a northbound interface for integration with third-party and your homegrown management applications.

Figure 3. Integrated Network and Application Performance Visibility Across the Network



For More Information

For more information about the Cisco Prime NAM product family, visit www.cisco.com/go/nam or contact either your local account representative or the Cisco Prime NAM product marketing group at nam-info@cisco.com.