



# Effective Application Delivery with Cisco NAM and NetQoS Reporting

At-A-Glance

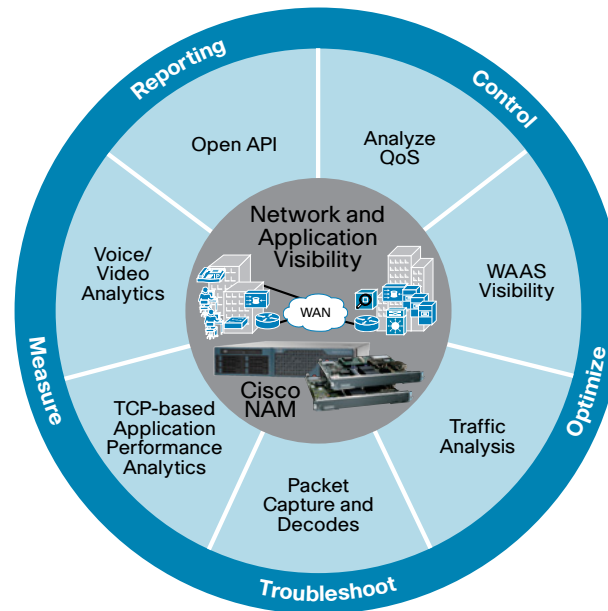
## Simplify Application Delivery with Real-Time, Granular Visibility and Enterprisewide Reporting

The network is the foundation for application delivery. Next-generation networks need to meet the growing challenge of effectively delivering applications and services in complex IT environments, where reliable and consistent application performance is vital to business success.

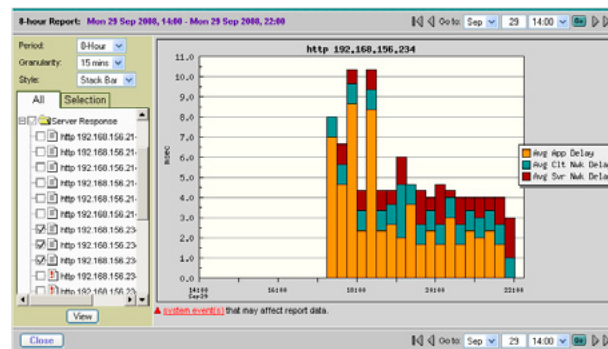
Cisco® Network Analysis Module (NAM) 4.1 is a network-aware performance monitoring solution that provides comprehensive visibility into network and application performance to empower network managers to tackle the next generation of application delivery challenges (Figure 1). It allows them to:

- Monitor application performance in real time with rich analytics
- Improve application performance with effective use of control and optimization mechanisms such as quality of service (QoS) and Cisco Wide Area Application Services (WAAS)
- Accelerate problem resolution with comprehensive traffic visibility and advanced troubleshooting
- Preempt performance issues with proactive alerts facilitating corrective action to minimize the impact on end users
- Quantify the before and after of a business change, such as server consolidation, analyze WAN Optimized and Passthrough traffic, and voice-over-IP (VoIP) rollout on application and network performance

**Figure 1.** Cisco Network Analysis Module Supporting Application Delivery



**Figure 2.** Real-Time Application Performance Visibility with Cisco NAM



Cisco NAM exports application response time information to NetQoS SuperAgent\* management console for consolidated enterprisewide reporting. NetQoS SuperAgent reporting complements the granular real-time performance visibility offered by Cisco NAM to help monitor how applications are being delivered across the enterprise, yet isolate and resolve delivery problems proactively and promptly at their source (Figure 2).

NetQoS SuperAgent, the application response time module of the NetQoS Performance Center, offers a wide selection of management, operations, and engineering analytics and reports, including service-level summaries, dashboards, multitier application layouts, correlated incidents, and detailed performance trend plots. The focus of NetQoS reporting is on interactive workflows that draw attention to performance-related issues and provide navigation to actionable details. The user can simply follow the colors from an enterprise dashboard, to a logical diagram of an N-tier application (Figure 3), to the detailed trend graphs of performance metrics.

**Figure 3.** Enterprisewide Reporting with NetQoS SuperAgent





# Effective Application Delivery with Cisco NAM and NetQoS Reporting

At-A-Glance

## Business Benefits for IT Executives

As businesses increasingly rely on enterprise applications to help ensure efficient operations, IT can benefit by combining Cisco NAM and NetQoS reporting in many ways:

- Enhance service levels with consistent application performance
- Implement baselines and performance thresholds for proactive management
- Improve operational efficiency with faster problem resolution and greater productivity
- Increase productivity with role-based views, interactive workflows, and actionable intelligence
- Maximize the value of IT investment with optimized use of network resources
- Anticipate infrastructure changes by analyzing resource usage and traffic trends

## Why Cisco and NetQoS?

Cisco NAM is available as an integrated service module or self-contained appliance, offering the deployment flexibility and visibility required to deliver consistent performance levels across the network. The NAM service module can be easily installed into the leading switching and routing platforms, such as Cisco Catalyst® 6500 Series Switch, Cisco 7600 Series Router, and Cisco 2800 and 3800 Series Integrated Services Routers. As an integrated solution into the Cisco platforms, Cisco NAM uses direct access to the data path to provide granular packet-level visibility and precise application performance analytics. Cisco NAM also allows third-party management applications to pull meaningful data to build additional value on top of Cisco NAM.

NetQoS SuperAgent uses Cisco NAM as a rich source of performance information to deliver comprehensive application response time reports with intuitive workflows. In addition, NetQoS SuperAgent facilitates access to Cisco NAM for real-time, granular visibility and troubleshooting to help ensure effective application delivery.

**\* Note:** NetQoS and SuperAgent are registered trademarks of NetQoS, Inc. in the United States and in other countries.

## For More Information

For more information about the Cisco NAM product family, visit <http://www.cisco.com/go/nam>, contact your local account representative or the Cisco NAM product marketing group at [nam-info@cisco.com](mailto:nam-info@cisco.com).

For more information about NetQoS SuperAgent, visit <http://www.netqos.com/> or contact NetQoS at [sales@netqos.com](mailto:sales@netqos.com).