



# Cisco License Manager 3.0 Executive Overview



**Niraj Gopal**

# Agenda

- Overview
- Benefits
- Activation Workflows
- Architecture
- Supported Products
- Summary
- Q & A

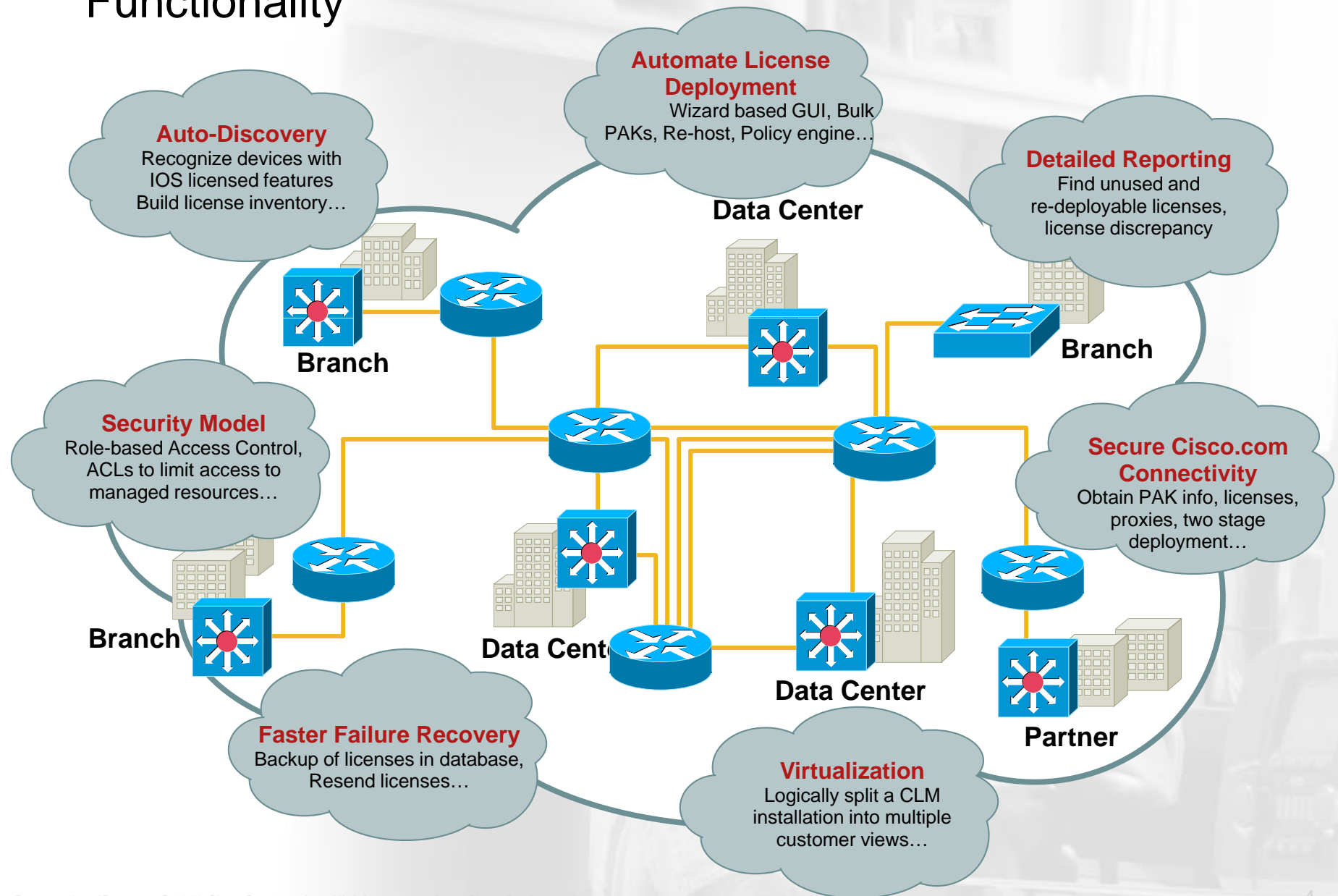
# Overview - Cisco License Manager

- Key component of Cisco Software Activation
- Supports network-wide license discovery, deployment and tracking
- Minimizes operational cost to customers via policy based license management



# Overview

## Functionality



# What's New in CLM 3.0

- Increased CLM Scale supporting up to 500,000 devices
- Faster searches and queries
- Improved Software Asset management
  - EOS/EOL/PSIRT of managed assets
- Support Cisco.com communication via proxies
- Improved Module Support
  - Manage containment relationship between network modules
- Full functionality Java SDK
- New device support
  - Cisco Modular Integrated Services Routers – 1900, 2900 and 3900 Series
  - Cisco ACE Application Control Engine Module
  - Cisco Catalyst 6500 Series Firewall Services Module
  - Cisco Unity Express Network Modules
  - Cisco ASR 9000 Aggregation Services Routers
  - Cisco Application eXtension Platform (AXP)
  - Cisco uBR10000 Series Universal Broadband Routers

## Benefits - Reduced Complexity

- **Lower TCO** by automating license workflows
- **Simple** to Install and use
- Aids in **Audit compliance** via advanced license reports
- **Simplify** license transfers
- **Secure communication** with Cisco.com



## Benefits - Enhanced Security & Virtualization

- **Role Based Access Control** via user roles
- **Access Control Lists** limit access to PAKs and Devices
- **Virtualize** one CLM installation into multiple customer views





# Benefits - Increased Productivity

- Enables customers to **rapidly** roll out **new services** by **accelerating** license deployment
- **Reduces** the time of large scale license deployment
- Policy based license management interface enables **Write-Once, Run-Again**
- Obtain licenses for **pre-deployed** devices
- Quick **EoS/EoL and PSIRTs** reports for your software assets
- **Scales** to 500, 000 devices





## Benefits - Investment Protection

- Support **all** Cisco IOS software licenses and license management for a wide range of Cisco platforms running IOS as well as other operating systems



Automate licensing for ISRs, AIM, UC500 Series, PIX, ASA, IPS, NEXUS and ASR9000 platforms.

- **Integration with** CiscoWorks and Cisco Configuration Professional
- Full functionality **Java Software Development Kit (SDK)** to integrate with existing applications

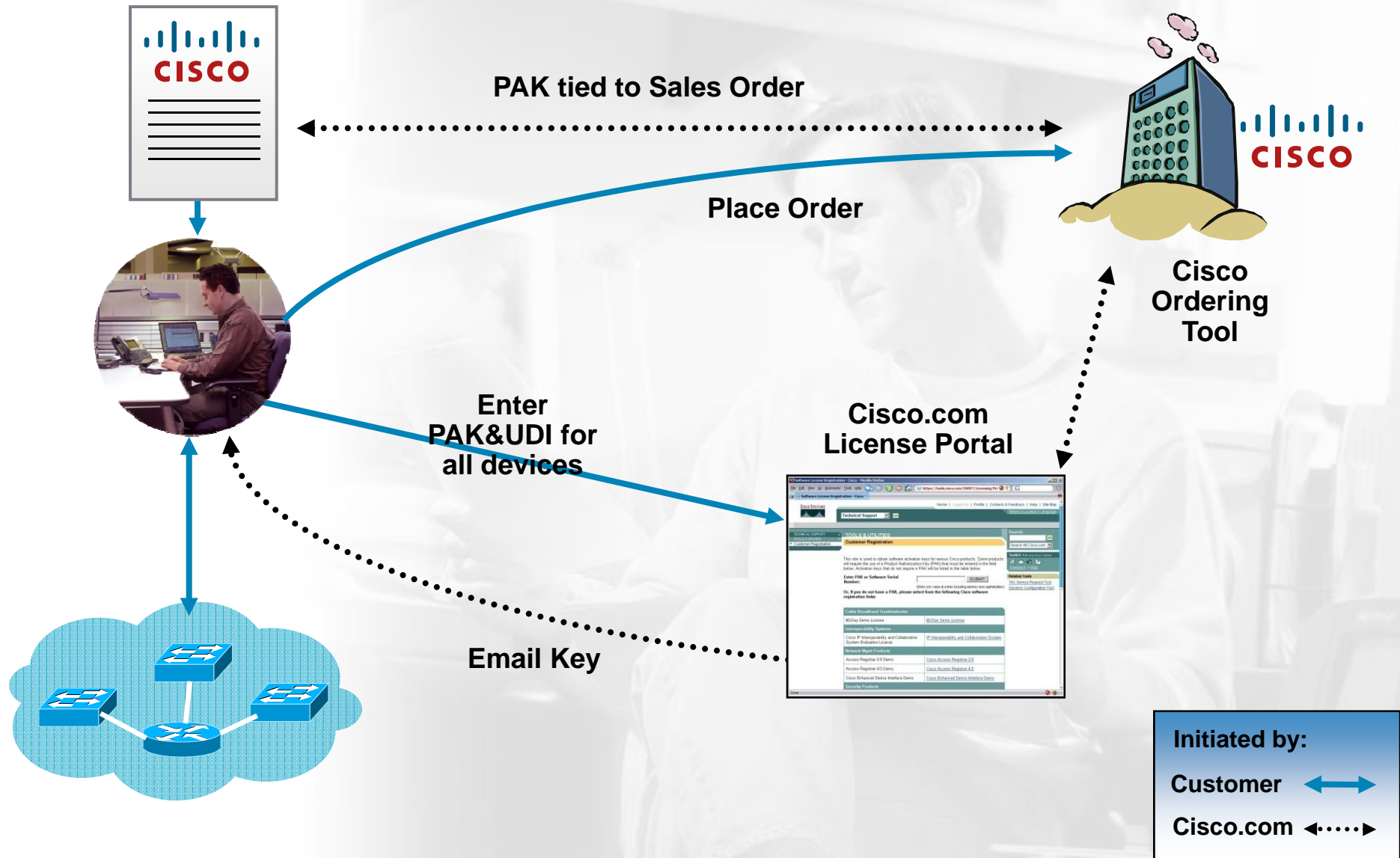


# Benefits - Faster Failure Recovery

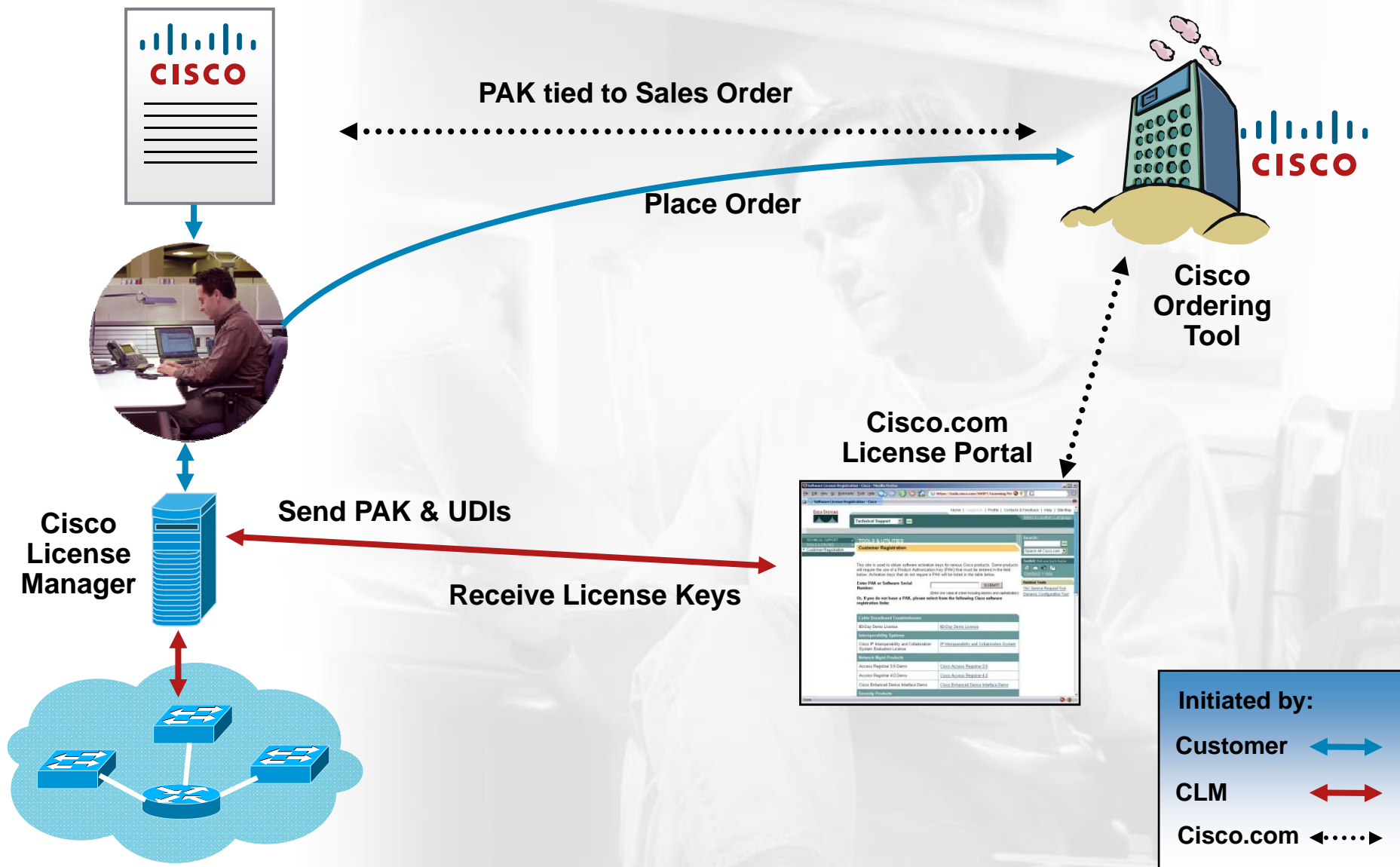
- **Restore** device licenses from **database** backup
- Ability to **resend** all licenses from Cisco.com and **deploy** them with “One Click”
- Extensive **troubleshooting** capabilities



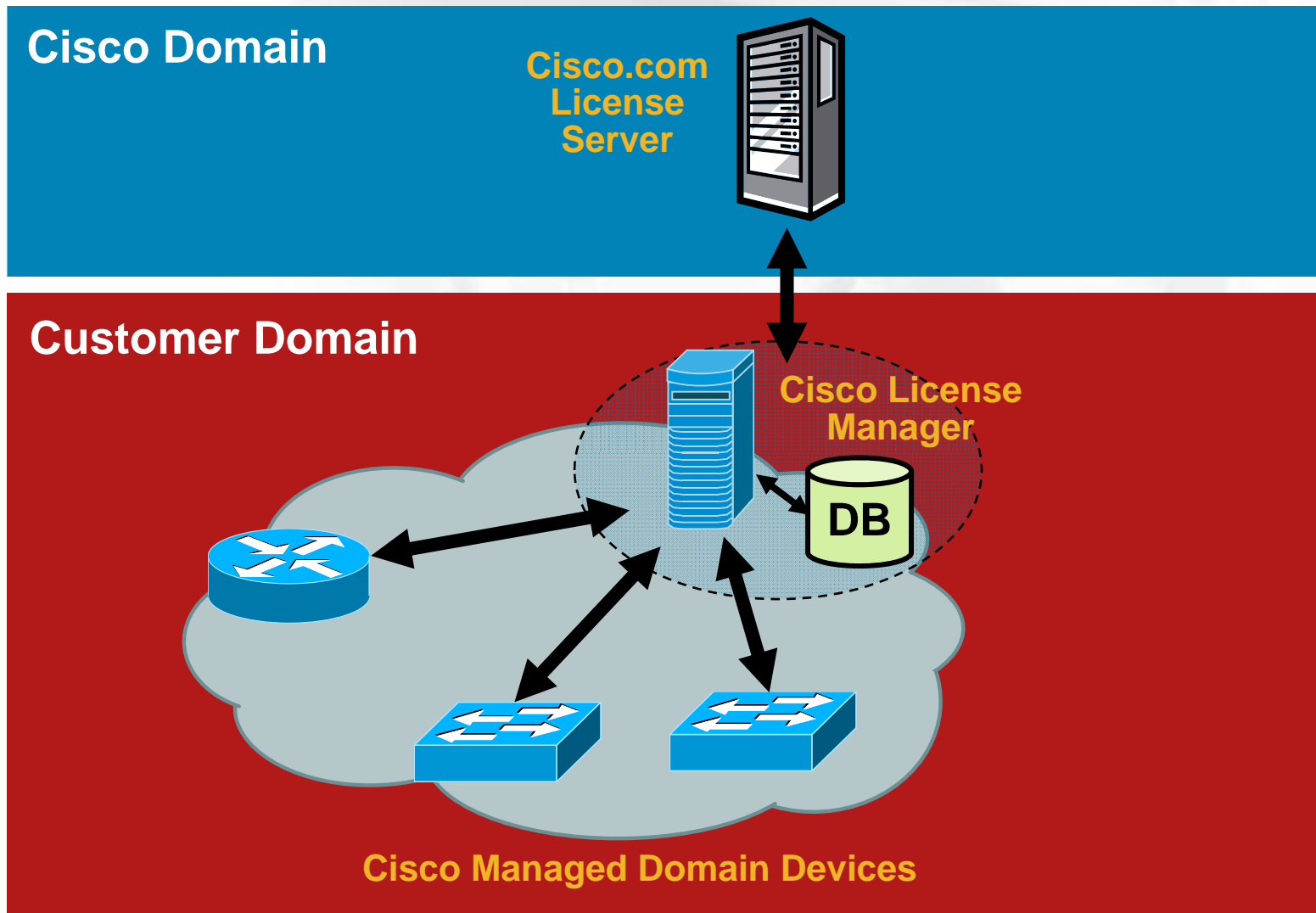
# Activation Workflow – Before CLM



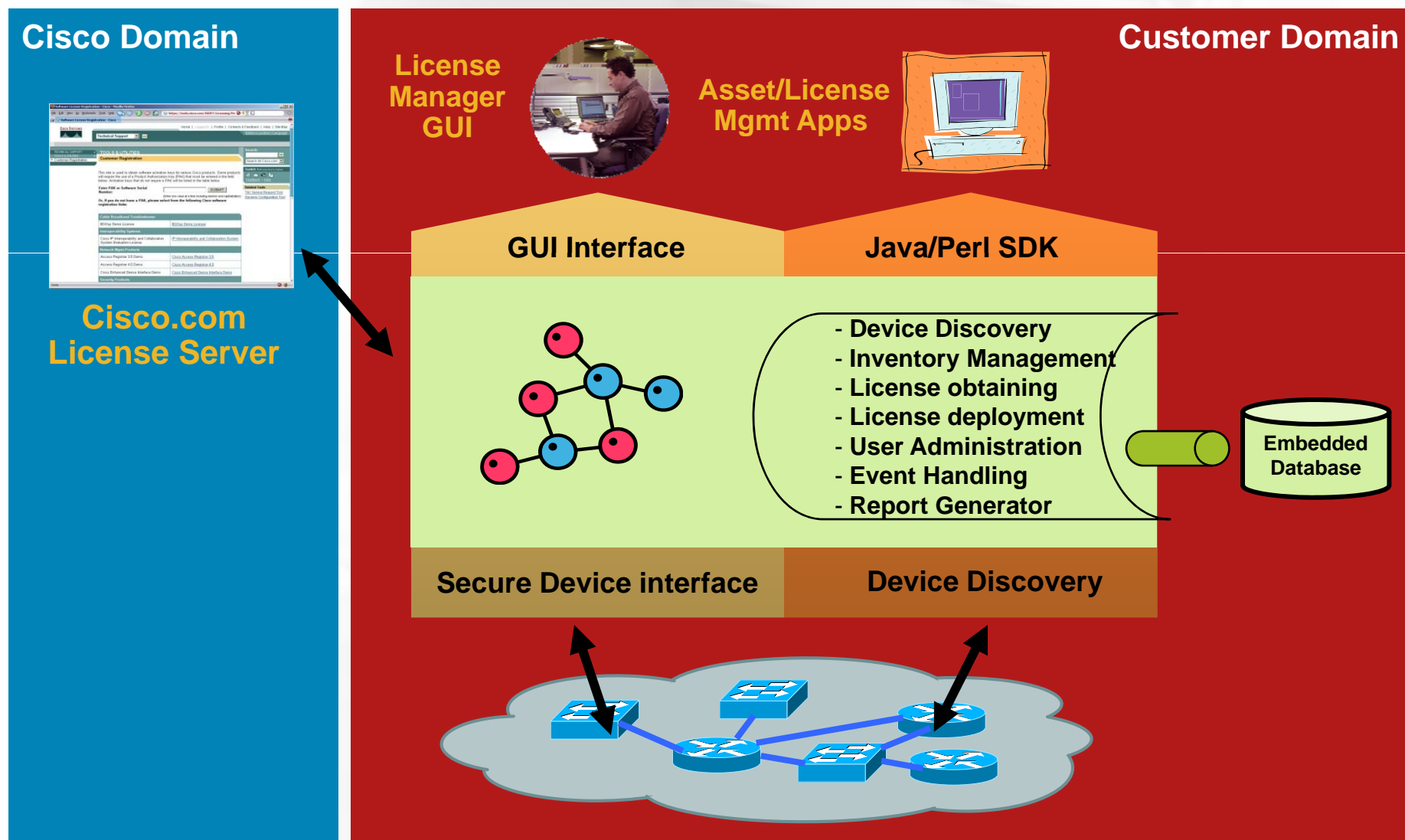
# Activation Workflow - After CLM



# Architecture - Functional Hierarchy

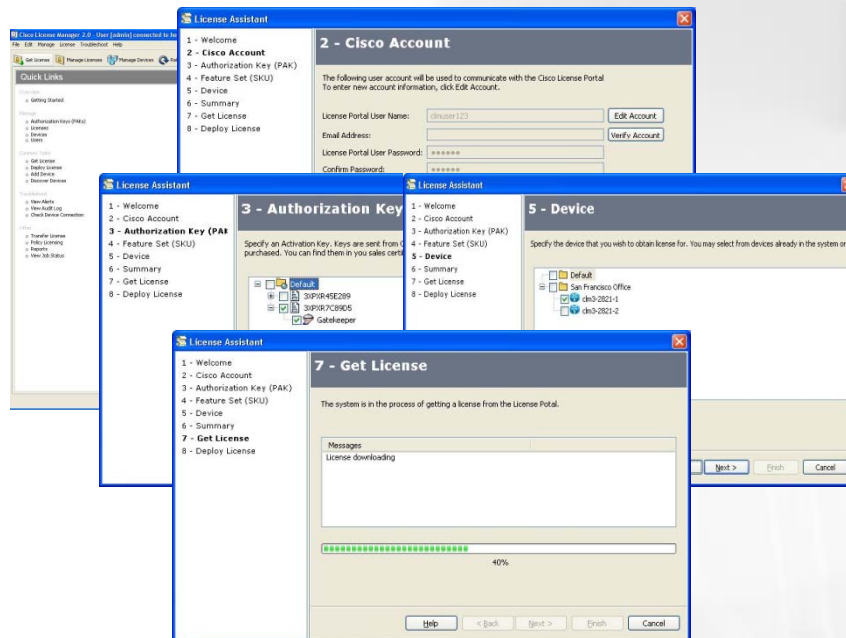


# Architecture - Functional Overview

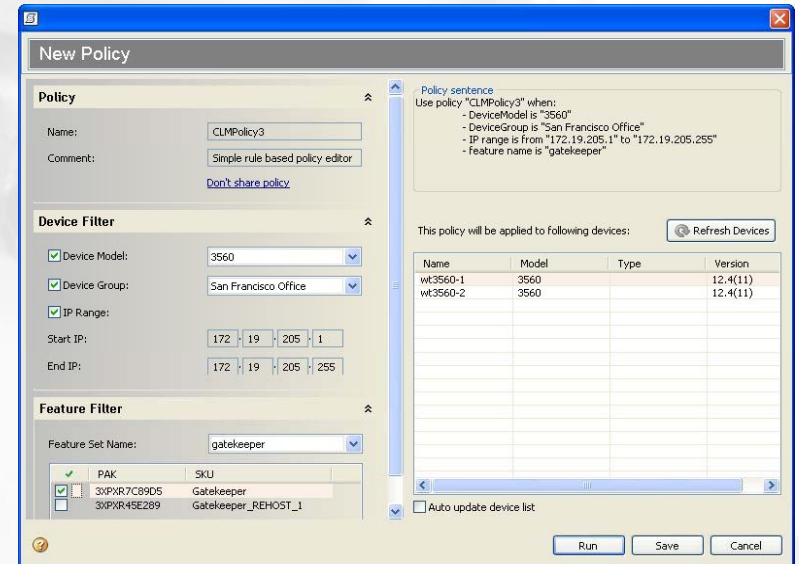




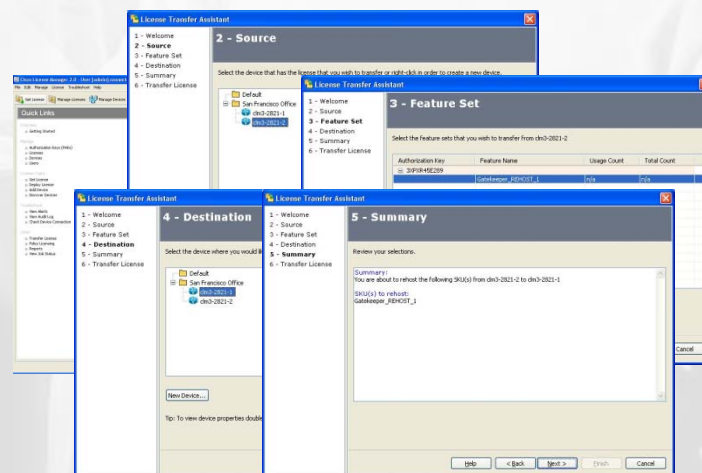
# Usage – License Management



**Wizard for obtaining licenses**



**Policy Based License Management**



**Wizard for license transfers**



# Supported Products

- Cisco License Manager part numbers:

Cisco License Manager Client and Server Software is available **FREE** of cost only via [download](#) from Cisco.com

Optional products are available for FREE

CLM3.0-JAVA-SDK, CLM3.0-JAVA-SDK-U

- Supported OSes

Windows Server 2003

Windows XP

Solaris 10

RedHat Linux

VMWare ESX Server

- Supports Software Activation and License Management for

Cisco Catalyst 3750-E and 3560-E Series Switches

Cisco Catalyst Blade Server (CBS) 3100 Series Switches

Cisco Modular ISRs – 1861, 2811, 2821, 2851, 3825, 3845

Cisco Universal Gateways - AS5350XM, AS5400XM

Cisco Fixed ISRs – C860, C880

Cisco Unified Communications 500 Series

## Supported Products (Contd.)

Cisco ASA 5500 Series Adaptive Security Appliances

Cisco ASA 5500 Series Content Security Services Module (ASA-SSM-CSC-10)

Cisco IPS 4000 Series Sensors

Cisco PIX 500 Series Security Appliances

Cisco MDS 9000 Family of Multilayer Switches

Cisco Nexus 7000 Family of Multilayer Switches

 **Cisco ACE Application Control Engine Module**

 **Cisco 1900 Series Modular Integrated Services Routers**

 **Cisco 2900 Series Modular Integrated Services Routers**

 **Cisco 3900 Series Modular Integrated Services Routers**

 **Cisco Catalyst 6500 Series Firewall Services Module**

 **Cisco Unity Express Network Modules**

 **Enhanced EtherSwitch Service Modules for ISRs**

 **Cisco ASR 9000 Aggregation Services Routers**

 **Cisco Application eXtension Platform (AXP)**

 **Cisco uBR10000 Series Universal Broadband Routers**

# Summary

- Cisco License Manager automates Cisco software licensing workflows and scales to 500,000 devices
- Detailed reporting capabilities aid in Audit compliance
- Full functionality Java Software Development Kit (SDK) enables easy integration

