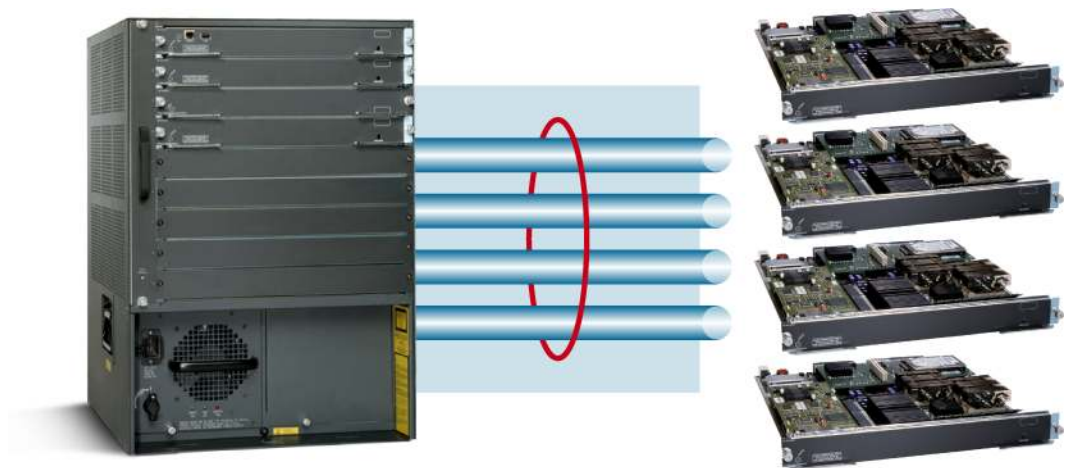


## Cisco IDSM-2 Bundle with 2-Gbps Performance

The Cisco® Intrusion Detection System Services Module (IDSM-2) 2-Gbps bundle is an integrated network security solution that enables organizations to minimize risk, maximize business continuity, and scale to multigigabit environments while optimizing productivity.

Cisco intrusion detection and prevention (IDS/IPS) solutions enable organizations to protect their connected business assets from threats and increase their operating efficiency. As part of the Cisco Systems® family of IDS/IPS solutions, the Cisco IDSM-2 bundle provides protection for data network infrastructures that require multigigabit performance. Network threats continue to increase in complexity; as a result, an organization's security solution must provide effective network intrusion prevention while maintaining business continuity.

**Figure 1.** Cisco Catalyst 6500 Intrusion Detection Service Module-2 Bundle



The Cisco IDSM-2 bundle combines market-leading intrusion prevention and switching into a single system that provides up to 2 Gbps of intrusion prevention performance. The bundle includes the Cisco Catalyst® 6506-E Switch chassis, the Cisco Catalyst 6500 Supervisor Engine 32, and four Cisco IDSM-2s.

With an installed base in the hundreds of thousands, the widely deployed Cisco Catalyst chassis is a logical platform for additional services such as firewall, VPN, and IDS/IPS. The Cisco IDSM-2 is a second-generation module for Cisco Catalyst chassis, providing unique benefits to customers seeking IDS/IPS attack protection. Cisco IPS Sensor Software Version 5.x delivers inline IPS capabilities to the Cisco IDSM-2.

## Features and Benefits

Table 1 lists features of the Cisco IDSM-2 bundle.

**Table 1.** Cisco IDSM-2 Bundle Features

Features	Details
<b>Multigigabit Scalability</b>	The IDSM-2 bundle provides 2 Gbps of IPS performance using 4 IDSM-2s
<b>Hot Swap Modules</b>	IDSM-2 insertion/removal never affects the Cisco Catalyst switch
<b>Cisco Catalyst Chassis Benefits</b>	<ul style="list-style-type: none"> <li>• Cisco EtherChannel® load balancing</li> <li>• Supervisor engine and power redundancy</li> <li>• Port density</li> <li>• Combining with other services modules to provide a scalable security solution</li> </ul>
<b>WAN Interoperability Support</b>	FlexWAN support
<b>Accurate Prevention Technologies</b>	Advanced false positive reduction features provide confidence in data passed to the internal network by the user-adjustable Meta Event Generator and Risk Rating features
<b>Multiple Capture Techniques</b>	<ul style="list-style-type: none"> <li>• Multiple techniques include SPAN/RSPAN; VLAN access control list (ACL) capture combined with shunning; TCP resets when in passive mode; and drop actions when used inline</li> <li>• Allows customers to monitor various network segments and traffic while providing timely action to mitigate threats</li> </ul>
<b>VLAN ACL Capture</b>	Cisco is the only vendor to provide an in-switch IDS/IPS solution supplying access to the data stream via VLAN ACL capture
<b>Standardized Code Base</b>	<ul style="list-style-type: none"> <li>• Uses the same IPS code as the award-winning Cisco IPS 4200 Series appliances, allowing users to standardize on a single management technique</li> <li>• Simplifies and speeds up installation, training, operation, and support</li> </ul>
<b>Optional anti-X Integrated Services</b>	Partnership with Trend Micro augments Cisco's native detection and mitigation capabilities with the most complete anti-X updates for timely recognition and prevention of malware-based threats
<b>Single Device Management Using CLI or Cisco IPS Device Manager (IDM)</b>	<ul style="list-style-type: none"> <li>• Module can be configured using the CLI, which is available locally or remotely via Telnet or Secure Shell (SSH)</li> <li>• Cisco IDM is a Web-based tool for sensor configuration and management. It can be accessed through Internet Explorer, Netscape, or Mozilla, and is enabled by default to use Secure Sockets Layer (SSL).</li> </ul>
<b>Enterprise Management and Monitoring Tools</b>	<ul style="list-style-type: none"> <li>• Cisco IDS Event Viewer (IEV) provides event monitoring for up to five devices and provides a free monitoring tool for managing IPS events</li> <li>• Cisco Security Manager and Cisco Security MARS provide world-class management and monitoring for sensor deployments of all sizes</li> </ul>

## Ordering Information

**Table 2.** Cisco IDSM-2 Bundle Part Numbers

Part Number	Description
<b>WS-C6506E-IPSC-K9</b>	Includes Cisco Catalyst 6506-E Switch, Supervisor Engine 32 with 8 x 1 Gigabit Ethernet Small Form-Factor Pluggable (SFP) plus 1 x 10/100/1000 uplink port, 8 copper SFP interfaces, 4 IDSM-2s, and 1 Power-Supply 3000W
<b>WS-C6506E-IPSF-K9</b>	Includes Cisco Catalyst 6506-E Switch, Supervisor Engine 32 with 8 x 1 Gigabit Ethernet SFP plus 1 x 10/100/1000 uplink port, 8 multimode fiber SFP interfaces, 4 IDSM-2s, and 1 Power-Supply 3000W
<b>WS-C6506E-IPS10GK9</b>	Includes Cisco Catalyst 6506-E Switch, Supervisor Engine 32 with 2 x 10 Gigabit Ethernet XENPAK plus 1 x 10/100/1000 uplink port, 2 short-range 10 Gigabit XENPAK interfaces, 4 IDSM-2s, and 1 Power-Supply 3000W

**Table 3.** Cisco IDSM-2 Service Part Numbers

Part Number
CON-SUxx-6506IPSC
CON-SUxx-6506IPSF
CON-SUxx-6506IPSG

**Table 4.** Service Key for “xx” in the Part Number

Description	Description
SU1 = 8x5xnext business day	SU2 = 8x5x4-hour service
SU3 = 7x24x4-hour service	SU4 = 7x24x2xnext business day
SU01 = 8x5x4-hour service onsite	SU02 = 8x5x4-hour service onsite
SU03 = 7x24x4-hour service onsite	SU04 = 7x24x2-hours service onsite

### Current Code and Signature Revision

To download Cisco IPS Sensor Software Versions 5.x and higher, visit:

- Software Release: <http://www.cisco.com/cgi-bin/tablebuild.pl/ips5>
- Signature Release: <http://www.cisco.com/cgi-bin/tablebuild.pl/ips5-sigup>

### Cisco Catalyst Supervisor Engine Hardware, Software Requirements, and Interoperability

There are numerous configuration options for the Cisco IDSM-2 bundle. For more information on supported configurations, visit <http://www.cisco.com/appcontent/apollo/configureHomeGuest.html>.

**Table 5.** Regulatory Compliance

Feature	Description
<b>Emissions</b>	FCC Part 15 (CFR 47) Class A, ICES-003 Class A, EN55022 Class A, CISPR22 Class A, AS/NZS 3548 Class A, VCCI Class A with UTP cables, EN55022 Class B, CISPR22 Class B, AS/NZS 3548 Class B, VCCI Class B with FTP cables
<b>Safety</b>	CE marking according to UL 1950, CSA 22.2 No. 950, EN 60950, IEC 60950, TS 001, AS/NZS 3260
<b>Certifications</b>	<ul style="list-style-type: none"> <li>• NEBS Level 3 pending (with Cisco Catalyst 7600 Series)</li> <li>• Common Criteria Level 2 certified</li> </ul>

### Export Restrictions

The Cisco IDSM-2 is classified as a “strong encryption” product and is export restricted. For more information, visit <http://www.cisco.com/wwl/export/crypto/tool/>.

### Additional Information

For documentation, visit <http://www.cisco.com/univercd/cc/td/doc/product/iaabu/csids/index.htm>.

For more information about Cisco Catalyst 6500 Series Switches, visit <http://www.cisco.com/go/6000>.

For more information about Cisco IPS solutions, visit <http://www.cisco.com/go/ips/>.

For more information about Cisco and Trend Micro, visit <http://www.cisco.com/en/US/products/ps6542/index.html>.

For more information on Cisco Security Manager, visit <http://www.cisco.com/go/csmanager>.

For more information on Cisco Security MARS, visit <http://www.cisco.com/go/mars>.

### Service and Support

Cisco offers a wide range of services programs to accelerate customer success. These innovative services programs are delivered through a unique combination of people, processes, tools, and partners, resulting in high levels of customer satisfaction. Cisco services help you to protect your network investment, optimize network operations, and prepare the network for new applications to

extend network intelligence and the power of your business. For more information about Cisco Services, see [Cisco Technical Support Services](#) or [Cisco Advanced Services](#).



**Americas Headquarters**  
Cisco Systems, Inc.  
170 West Tasman Drive  
San Jose, CA 95134-1706  
USA  
www.cisco.com  
Tel: 408 526-4000  
800 553-NETS (6387)  
Fax: 408 527-0883

**Asia Pacific Headquarters**  
Cisco Systems (USA) Pte. Ltd.  
168 Robinson Road  
#28-01 Capital Tower  
Singapore 068912  
www.cisco.com  
Tel: +65 6317 7777  
Fax: +65 6317 7799

**Europe Headquarters**  
Cisco Systems International BV  
Haarlerbergpark  
Haarlerbergweg 13-19  
1101 CH Amsterdam  
The Netherlands  
www-europe.cisco.com  
Tel: +31 0 800 020 0791  
Fax: +31 0 20 357 1100

Cisco has more than 200 offices worldwide. Addresses, phone numbers, and fax numbers are listed on the Cisco Website at [www.cisco.com/go/offices](http://www.cisco.com/go/offices).

©2007 Cisco Systems, Inc. All rights reserved. CCVP, the Cisco logo, and Welcome to the Human Network are trademarks of Cisco Systems, Inc.; Changing the Way We Work, Live, Play, and Learn is a service mark of Cisco Systems, Inc.; and Access Registrar, Aironet, BPX, Catalyst, CCDA, CCDP, CCIE, CCIP, CCNA, CCNP, CCSP, Cisco, the Cisco Certified Internetwork Expert logo, Cisco IOS, Cisco Press, Cisco Systems, Cisco Systems Capital, the Cisco Systems logo, Cisco Unity, Enterprise/Solver, EtherChannel, EtherFast, EtherSwitch, Fast Step, Follow Me Browsing, FormShare, GigaDrive, HomeLink, Internet Quotient, IOS, iPhone, IP/TV, iQ Expertise, the iQ logo, iQ Net Readiness Scorecard, iQuick Study, LightStream, Linksys, MeetingPlace, MGX, Networkers, Networking Academy, Network Registrar, PIX, ProConnect, ScriptShare, SMARTnet, StackWise, The Fastest Way to Increase Your Internet Quotient, and TransPath are registered trademarks of Cisco Systems, Inc. and/or its affiliates in the United States and certain other countries.

All other trademarks mentioned in this document or Website are the property of their respective owners. The use of the word partner does not imply a partnership relationship between Cisco and any other company. (0710R)