

## CHAPTER 7

# Installing and Configuring Cisco PreQualification Assistant

---

First Published: Nov 2, 2011, OL-22226-01

## Contents

- [Introduction, page 7-2](#)
- [Pre-Configuration Procedure Guidelines for Checking Initial Network Setup, page 7-2](#)
- [Installing the PreQualification Assistant Tool, page 7-3](#)
- [Running the Tool - Using the Tool Application Window, page 7-6](#)
- [Menu Commands, page 7-8](#)
- [File Menu Commands, page 7-8](#)
- [System Menu Command, page 7-8](#)
- [Using PreQualification Configuration Forms, page 7-11](#)
- [Calendar Server \(Microsoft Exchange\) Host Configuration Form, page 7-20](#)
- [Test Configuration Forms in an IBM Domino Environment, page 7-21](#)
- [Calendar Server \(IBM Domino\) Configuration Form, page 7-25](#)
- [Test Configuration Forms in a Microsoft Exchange Web Services \(EWS\) Environment, page 7-30](#)
- [WebEx Server, page 7-35](#)

# Introduction

This chapter explains how to install and configure the Cisco TelePresence Manager PreQualification Assistant tool.

It is important to install and run the PreQualification Assistant to ensure that the preconfiguration setup is performed correctly. The data you enter into the Tool Test Configuration forms are used to verify connections to the servers and validate data from them that is used to configure CTS-Manager.

## Pre-Configuration Procedure Guidelines for Checking Initial Network Setup

This table provides a guideline for the procedures you will need to reference in order to check the setup of the network **before** installing Cisco TelePresence Manager.

This table also lists the next couple to tasks to be performed when installing the CTS-Manager system.

**Table 7-1** *Pre-Configuration Guidelines for Testing the System Network Setup for CTS-Manager*

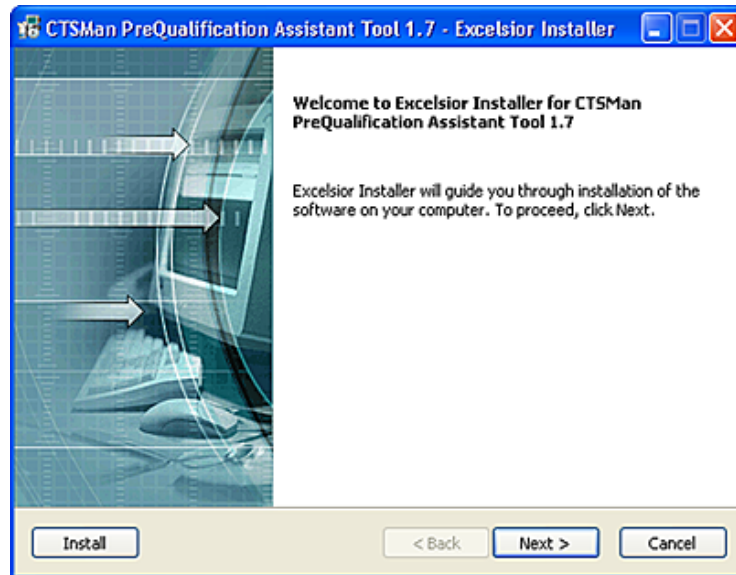
Setup Procedure Guidelines before Installing CTS-Manager	Description	Location
Install and configure PreQualification Assistant	Install, configure, and run the PreQualification Assistant to ensure that your preconfiguration setup is performed correctly. The data you enter into the Tool Test Configuration forms are used to verify connections to the servers and get data from them to be used to configure CTS-Manager	Current Chapter.
<b>Next Step after Pre-Configuration</b>		
(For installations on UCS server only) Configuring the UCS Server and VMware for Cisco TelePresence Manager	1	<a href="#">Chapter 8, “Configuring UCS Server and VMware for Cisco TelePresence Manager”</a>
Install or Upgrade Cisco TelePresence Manager		<a href="#">Chapter 9, “Installing or Upgrading Cisco TelePresence Manager”</a>

# Installing the PreQualification Assistant Tool

After you have downloaded the PreQualification executable, use the following procedures to install the tool.

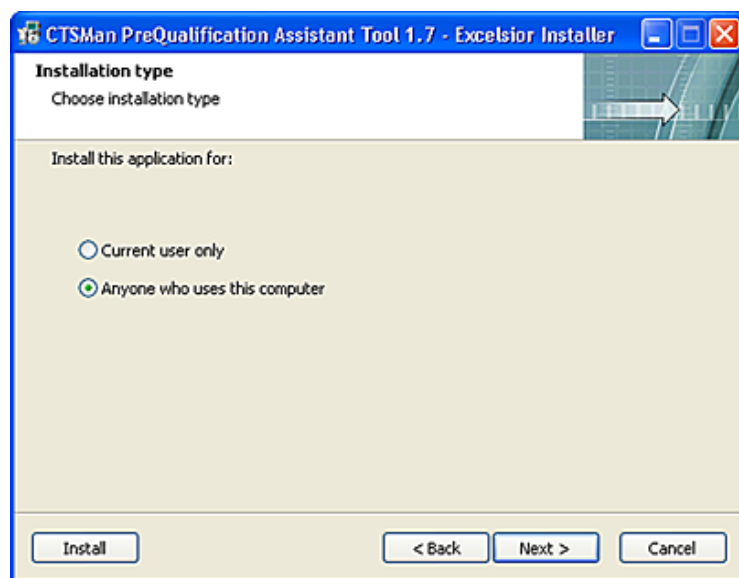
- Step 1** Double-click the executable to begin the install process. After the Installer window appears, click the **Next** button.

**Figure 7-1** *PreQualification Assistant Installer Window*

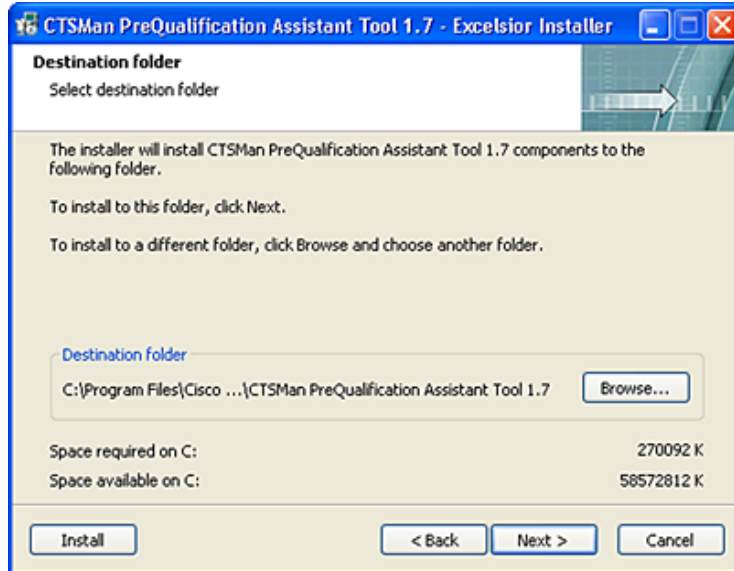


- Step 2** Specify if the application is to be a personal profile or can be used by others. Then click the **Next** button.

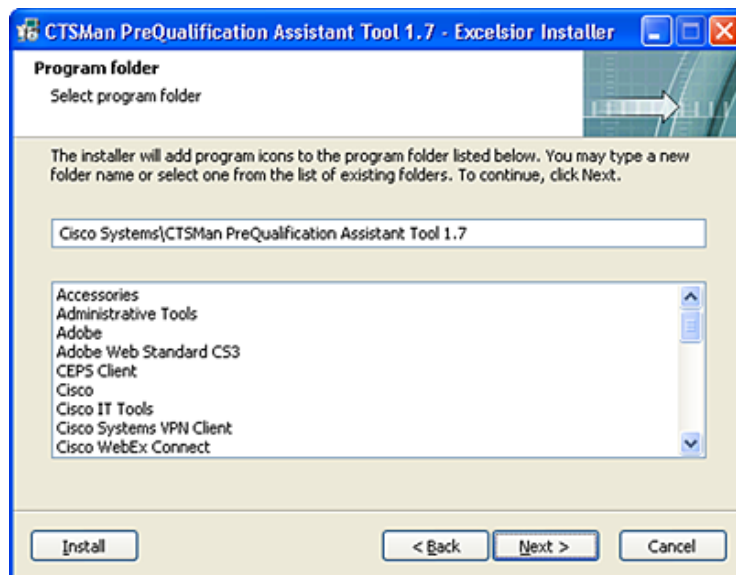
**Figure 7-2** *Installation Type Window*



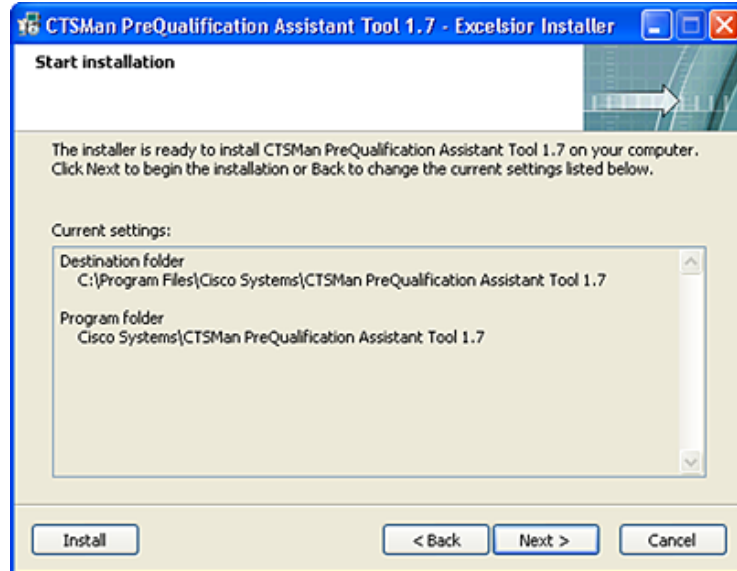
- Step 3** Review and accept the destination folder defaults and click the **Next** button.

**Figure 7-3** *Destination Folder Window*

**Step 4** Review the program folder destination, accept the defaults and click the **Next** button.

**Figure 7-4** *Program Folder Window*

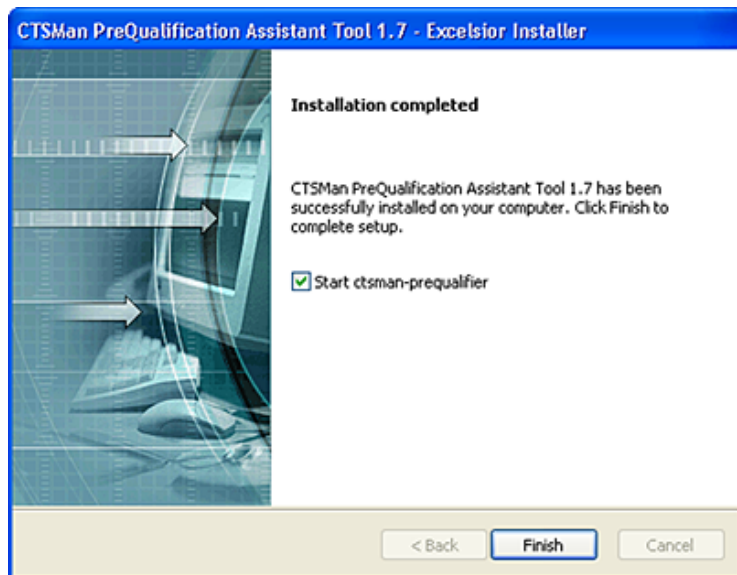
**Step 5** In the Start Installation window, review the folder information and if correct, click the **Next** button.

**Figure 7-5** Start Installation Window

**Step 6** If you are ready to finalize the installation, click **Finish** button.

**Note**

Uncheck the **Start** checkbox if you don't want to launch the tool immediately after completing the installation.

**Figure 7-6** Installation Completed Window

### Uninstalling a Previous Version

Uninstall previous versions using the PreQualification uninstaller.

**Note**

The directory is not removed at the end of the uninstall.

To uninstall the CTS-Manager PreQualification Assistant Tool:

- 
- Step 1** Close the window.
  - Step 2** Open the Windows Task Manager window on the PC and notice that both the uninstall processes are still running.
  - Step 3** In the Task Manager window, to the processes Tab and look for the PreQualification UI. Highlight it and click **End Process**.
  - Step 4** Go to the Control Panel, Add or Remove Programs. Remove the PreQualification program. This will terminate the directory and it can be removed.
- 

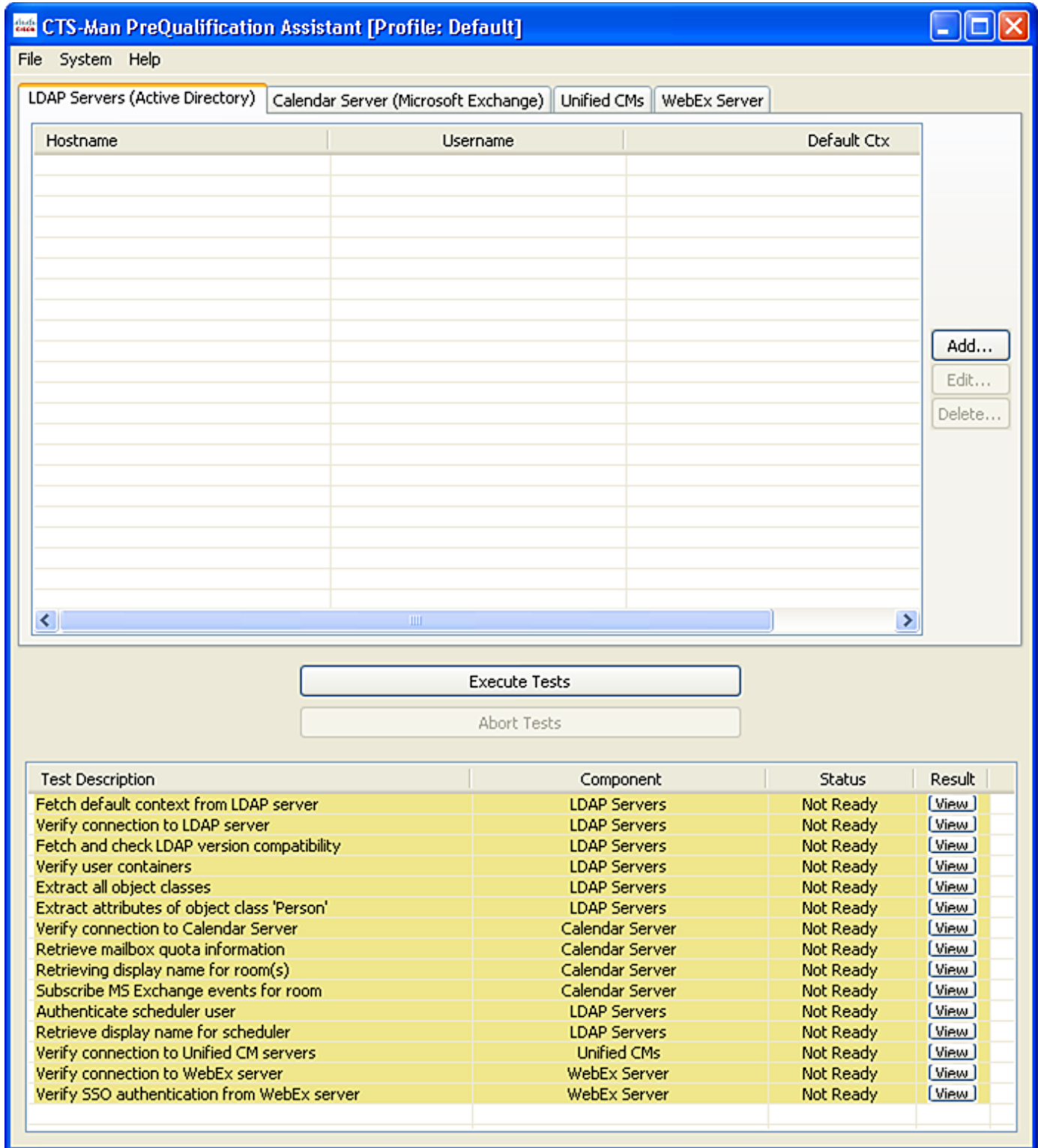
## Running the Tool - Using the Tool Application Window

The CTS-Manager PreQualification tool allows administrators to determine if any changes are needed to their network to support a CTS-Manager installation.

The tool runs a series of tests to determine if your LDAP server, Calendar server, and Cisco Unified CM configurations meet the requirements to support CTS-Manager. The set of tests you run are determined by the Calendar server running on your network (IBM Domino or Microsoft Exchange). You can also run a set of tests without specifying a calendar server.

In order to run a series of tests you need to provide the tool with configuration information for your LDAP servers, Calendar server, Cisco Unified CM servers and WebEx server. The four-tabbed window displays the information that is configured for the servers. To add, edit or delete this information, use the Add, Edit, or Delete buttons to access the host configurations forms used to enter configuration data.

Figure 7-7 Tool Application Window



The Tool application runs a series of tests to determine if your LDAP server, Calendar server, and Cisco Unified CM server configurations meet the requirements to support CTS-Manager. The set of tests you run are determined by the Calendar server running on your network (IBM Domino, Microsoft Exchange (Active Directory), or Microsoft Exchange EWS). You can also run a set of tests without specifying a Calendar server.

The lower part of the window displays the status of each test after clicking the Execute Tests button. Once you have run a set of tests you can view the results of each test in a Test Result window. The test results contain troubleshooting data needed to prepare your LDAP servers, Calendar server, and Cisco Unified CM servers to work with CTS-Manager.

If additional analysis is required to prepare your network, you can create a zip file for technical support that includes all the test results.

The Tool application window has three main areas which are explained in the following sections.

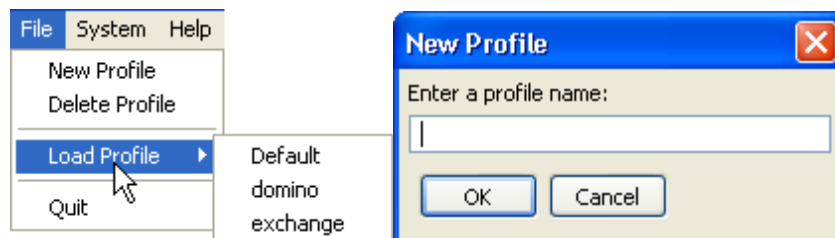
## Menu Commands

The following sections describe the commands in the File menu.

### File Menu Commands

- The **New Profile** command saves all the Test form field values you have entered to a profile that can be used again.
- The **Delete Profile** command asks you to confirm your deletion of the active profile.
- The **Load Profile** command lists the saved profiles. You can choose which profile you want to use to run the PreQualification tests.

**Figure 7-8** File Menu Commands



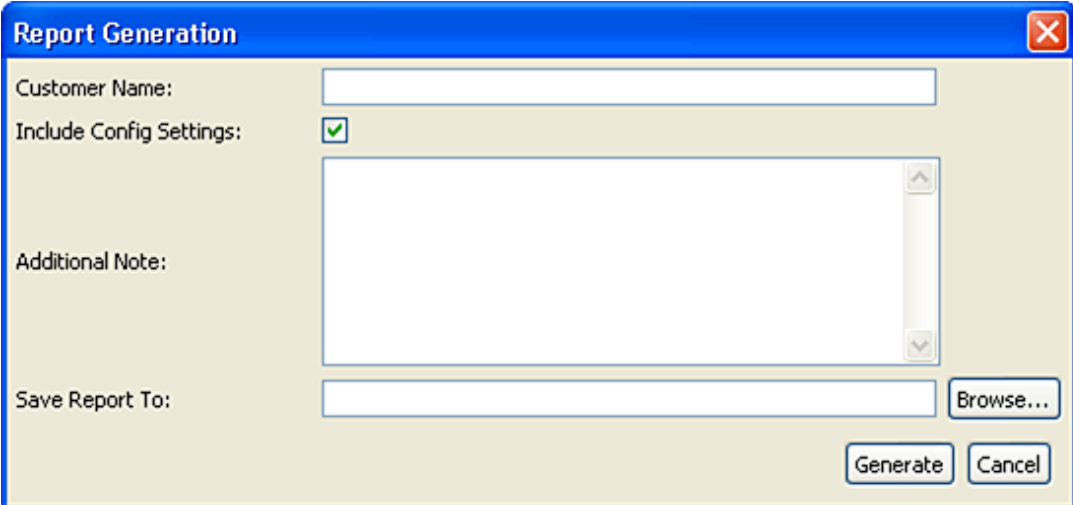
### System Menu Command

- The **Select Calendar Server** lists the Calendar servers. Choose either None, Microsoft Exchange, Domino, or Microsoft Exchange EWS to display the corresponding Test Configuration forms.
- The **Execute Tests** command performs the same function as the Execute Tests button displayed above the Test Status list at the bottom of the application window.
- The **Collect Logs** command collects all the tests you've run into a zip file to make it easy to transport the results to Cisco Technical Support, refer to [Figure 7-9](#).



- If you check the **Include Config Settings** checkbox, the values you entered into the Host Configuration forms are collected and included in the zipped report.

**Figure 7-9** *Report Generation Window*

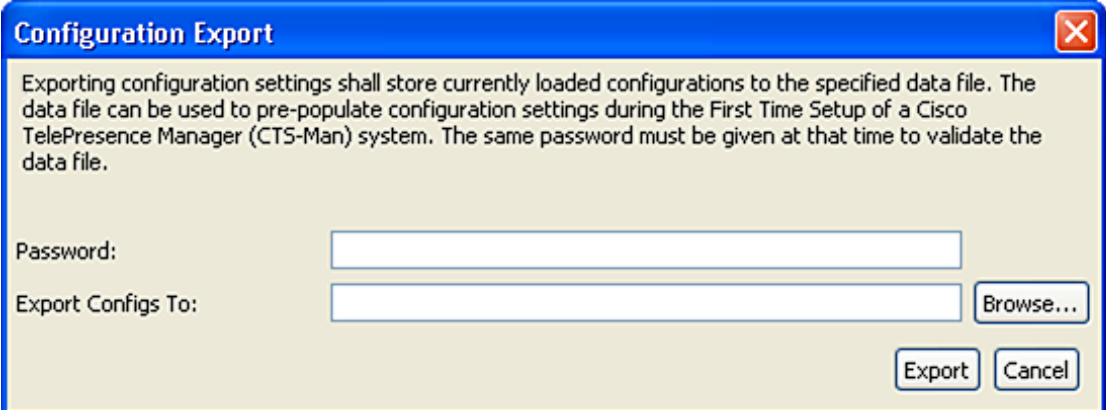


The **Report Generation** window has a blue title bar with a close button. It contains the following fields and controls:

- Customer Name:** A text input field.
- Include Config Settings:** A checkbox that is checked, with a green checkmark icon to its right.
- Additional Note:** A large text area with a vertical scrollbar.
- Save Report To:** A text input field followed by a **Browse...** button.
- Generate** and **Cancel** buttons at the bottom right.

- The **System > Export Configurations** selection allows you to export all the configurations you have saved to a data file.

**Figure 7-10** *LDAP Configuration Export Window*



The **Configuration Export** window has a blue title bar with a close button. It contains the following text and controls:

Exporting configuration settings shall store currently loaded configurations to the specified data file. The data file can be used to pre-populate configuration settings during the First Time Setup of a Cisco TelePresence Manager (CTS-Man) system. The same password must be given at that time to validate the data file.

- Password:** A text input field.
- Export Configs To:** A text input field followed by a **Browse...** button.
- Export** and **Cancel** buttons at the bottom right.

## Host Configuration Window

The PreQualification Configuration window presents four areas, selected by individual tabs. The tabs display the LDAP server, Calendar server and Unified CM server configurations you've chosen from the Select Calendar Server command in the System menu.



### Note

The Test and Add/Edit Configuration Form fields and how they are used are described in the [Using PreQualification Configuration Forms](#) section.

## Test Status Window

The bottom of the application window lists the tests available. This will change depending on which server type is chosen. The Component area lists which tests are available for each server type.

**Figure 7-11 The Test Status Window**

Test Description	Component	Status	Result
Fetch default context from LDAP server	LDAP Servers	Not Ready	<a href="#">View</a>
Verify connection to LDAP server	LDAP Servers	Not Ready	<a href="#">View</a>
Fetch and check LDAP version compatibility	LDAP Servers	Not Ready	<a href="#">View</a>
Verify user containers	LDAP Servers	Not Ready	<a href="#">View</a>
Extract all object classes	LDAP Servers	Not Ready	<a href="#">View</a>
Extract attributes of object class 'Person'	LDAP Servers	Not Ready	<a href="#">View</a>
Verify connection to Calendar Server	Calendar Server	Not Ready	<a href="#">View</a>
Retrieve mailbox quota information	Calendar Server	Not Ready	<a href="#">View</a>
Retrieving display name for room(s)	Calendar Server	Not Ready	<a href="#">View</a>
Subscribe MS Exchange events for room	Calendar Server	Not Ready	<a href="#">View</a>
Authenticate scheduler user	LDAP Servers	Not Ready	<a href="#">View</a>
Retrieve display name for scheduler	LDAP Servers	Not Ready	<a href="#">View</a>
Verify connection to Unified CM servers	Unified CMs	Not Ready	<a href="#">View</a>
Verify connection to WebEx server	WebEx Server	Not Ready	<a href="#">View</a>
Verify SSO authentication from WebEx server	WebEx Server	Not Ready	<a href="#">View</a>

**Table 7-2 Test Status Columns**

<b>Test Description</b>	This column describes the test.
<b>Component</b>	This column displays the type of test available on the different servers.
<b>Status</b>	<p>This column displays the status of the test. The statuses are:</p> <ul style="list-style-type: none"> <li>• <b>Not Ready</b> - All the required Test Configuration Form fields do not have values.</li> <li>• <b>Ready</b> - All the required Test Configuration Form fields have the required values entered.</li> <li>• <b>Not Applicable</b> - The test will not be run, because the LDAP/Calendar server does not need the test results</li> <li>• <b>Failed</b> - The test did not pass. Refer to the Test Results window by clicking the <b>View</b> button to the right of the failed test.</li> <li>• <b>Passed</b> - The test passed. There are no configuration changes needed to support the test results.</li> </ul>
<b>Result</b>	This column contains the View buttons for viewing the results for each test.



If it is necessary to change the configuration of one, highlight the line, and click the **Edit** button to change the configuration.

To remove one, highlight it and then click the **Delete** button.

When adding a Unified CM, click the **Add** button and the following Host Configuration window appears.

**Figure 7-13** The Cisco Unified CM Add/Edit Configuration Form

**Table 7-3** The Cisco Unified CM Add/Edit Configuration Form Fields

Field Name	Field Value
Host	The hostname or IP address of Cisco Unified CM
Bind Mode	This is always set to secure mode.
Port	This is always set to port 8443.
Username	Login account with Cisco Unified CM Application User account name. The admin username is not needed.
Password	Password for Cisco Unified CM. Again, the Application User account
Certificate	The full pathname to the Cisco Unified CM security certificate.
Save	Use this button to save the configuration.
Cancel	Cancel from this window if not adding a new Unified CM or editing the configuration.

## Test(s) Enabled by the Host Configuration Form

- Verify connection to Cisco Unified CM servers.



If it is necessary to change the configuration of one, highlight the line, and click the **Edit** button to change the configuration and the Host Configuration window appears, refer to [Figure 7-15](#).

To remove one, highlight it and then click the **Delete** button.

When adding another LDAP server, click the **Add** button and the following configuration window appears.

Select the Unified CM's tab. This window lists all the generic Cisco Unified CMs that have been configured for the CTS-Manager. If all of the Unified CMs have been configured, use the Execute Tests button to make sure that they have been configured correctly.

## LDAP (Generic) Test Configuration Form

**Figure 7-15** The LDAP Server (Generic) Add/Edit Configuration Form

**LDAP Server**

**Host Configuration**

Host:

Bind Mode: ☒ Normal ☐ Secure

Port:

Username:

Password:

Certificate:

Default Context:  Default Server: ☐ Default ☒ NonDefault

**Scheduler Authentication**

User Containers:

Scheduler Username:

Scheduler Password:

Login Attribute (EmailID):

**Table 7-4 The LDAP Server (Generic) Add/Edit Configuration Form Fields**

Field Name	Field Value
Host	The hostname or IP address of the LDAP server.
Bind Mode	If you set this to secure you'll need to provide a security certificate.
Port	In Normal bind mode the port setting is 389. In Secure bind mode the port setting default is 636.
Username	Enter the Active Directory user account username as the user fully qualified domain name (not the login name).  <b>Note</b> You also include the default context in the Username field. Examples are: <i>cn=administrator, cn=users,</i> <i>dc=mycompany, dc=com.</i>
Password	Password for LDAP server with administrative privileges.
Certificate	The full pathname to the LDAP security certificate. This is needed only if you are using the Secure Bind Mode.
NonDefault or Default Context	The NonDefault button is selected as the default. To change this, select Default and enter the default context in the form: <i>o=ciscoDev</i>
<b>Scheduler Authentication</b>	
User Containers	The containers from which queries are performed to retrieve user objects. More than one user container or user object can be specified. The Cisco Telepresence server uses the values entered to search through the containers in sequence to retrieve user and meeting room information from the Directory Server. Additionally, these containers are used to retrieve user information for authentication.  User containers are entered in the Entry field above the User Containers field. Use the Add button to add a user container to the list. To delete a user container from the list, select the specific user container and click Delete.
Scheduler Username	When the user selects "None" option, then this is not needed for generic LDAP environment, otherwise use your logon name.

**Table 7-4      The LDAP Server (Generic) Add/Edit Configuration Form Fields (continued)**

Field Name	Field Value
Scheduler Password	When the user selects “None” option, then this is not needed for generic LDAP environment, otherwise use the same as the Password for LDAP server with administrative privileges
Login Attribute (EmailID)	For “None” option use “mail” or for Exchange 2007 use “proxy Address.”

**Test(s) Enabled by this Test Configuration Form**

- Verify connection to LDAP server
- Verify user containers
- Extract all object classes
- Extract attributes of object class ‘Person’

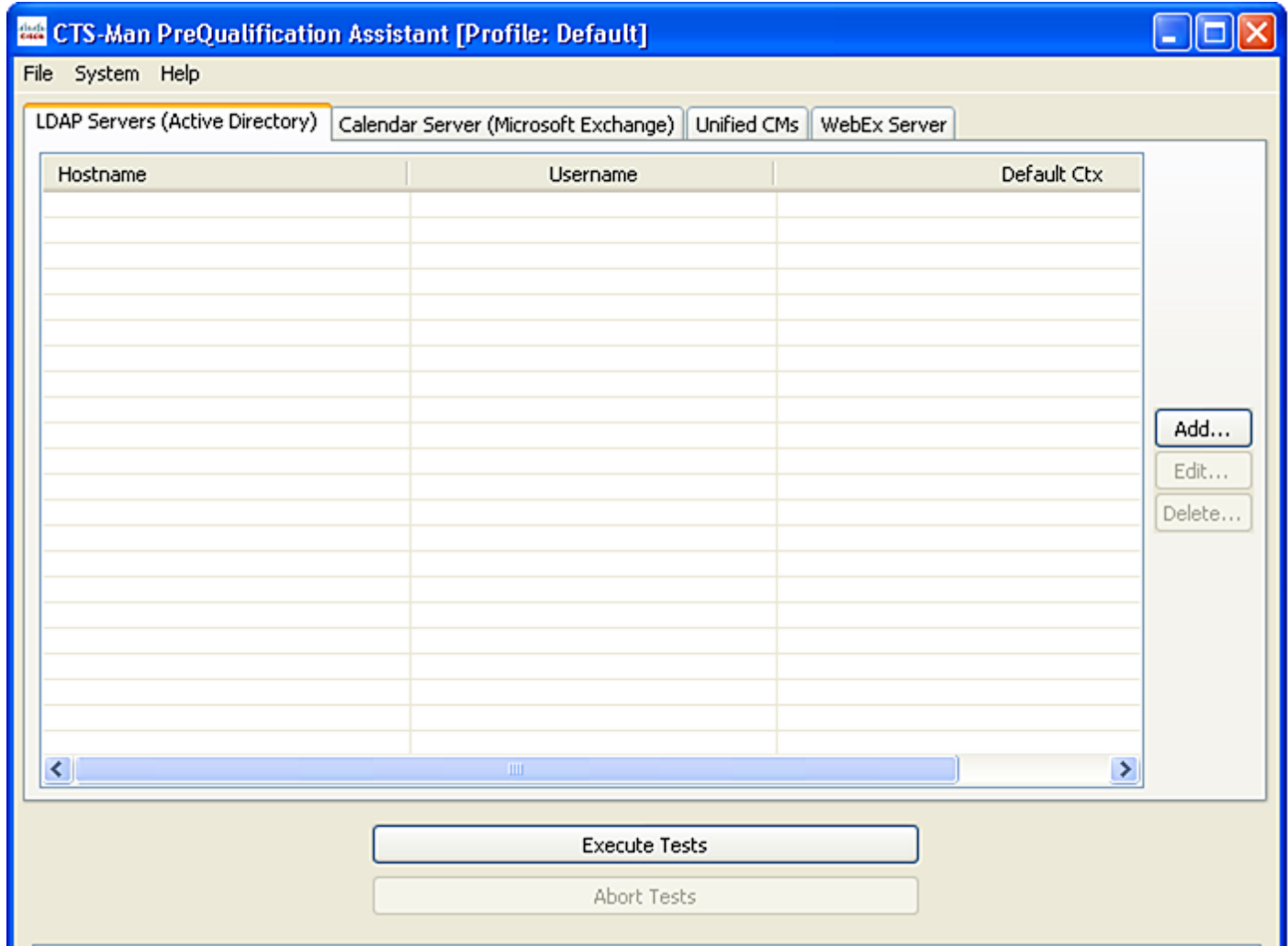
**Test Configuration Forms in a Microsoft Exchange Environment**

You can use the PreQualification Tool to test your LDAP server when specifying a Microsoft (Active Directory) calendar server. This applies when the user selects Calender Server, “Microsoft Exchange.”

This window lists all the LDAP servers that have been configured for the CTS-Manager. If all of the servers have been configured, use the Execute Tests button to make sure that they have been configured correctly.



**Figure 7-16** *LDAP Server Microsoft Active Directory Window*



This window lists all the LDAP (Active Directory) servers that have been configured for the CTS-Manager. If all of the LDAP servers have been configured, use the Execute Tests button to make sure that they have been configured correctly.

If it is necessary to change the configuration of one, highlight the line, and click the **Edit** button to change the configuration.

To remove one, highlight it and then click the **Delete** button.

When adding a LDAP server, click the **Add** button and the following configuration window appears.

## LDAP Server (Active Directory) Test Configuration Form

**Figure 7-17** The LDAP Server (Active Directory) Add/Edit Configuration Form

Test Description	Component	Status	Result
Verify connection to LDAP server	LDAP Servers	Not Ready	<a href="#">View</a>
Verify user containers	LDAP Servers	Not Ready	<a href="#">View</a>

**Table 7-5** The LDAP Server (Active Directory) Test Configuration Form Fields

Field Name	Field Value
Host	The hostname or IP address of the LDAP server.
Bind Mode	If you set this to secure you'll need to provide a security certificate.
Port	In Normal bind mode the port setting is 389. In Secure bind mode the port setting default is 636.
NonDefault or Default Context	The NonDefault button is selected as the default. To change this, select enter the default context in the form <i>dc=mycompany, dc=com</i>

**Table 7-5 The LDAP Server (Active Directory) Test Configuration Form Fields (continued)**

Field Name	Field Value
Username	<p>Enter the Username as the user fully qualified domain name.</p> <p><b>Note</b> You also include the default context in the Username field. Examples are:  <i>cn=administrator, cn=users,</i>  <i>dc=mycompany, dc=com.</i></p>
Password	Password for LDAP server with administrative privileges.
Certificate	The full pathname to the LDAP security certificate. This is needed only if you are using the Secure Bind Mode.
User Containers	<p>The containers from which queries are performed to retrieve user objects. More than one user container or user object can be specified. Cisco TelePresence Manager uses the values entered to search through the containers in sequence to retrieve user and meeting room (endpoint) information from the Directory Server. Additionally, these containers are used to retrieve user information for authentication.</p> <p>User containers are entered in the Entry field above the User Containers field. Use the Add button to add a user container to the list. To delete a user container from the list, select the specific user container and click Delete.</p>
Scheduler Username	The scheduler username is the value of an end user ID.
Scheduler Password	When the user selects “None” option, then this is not needed for generic LDAP environment, otherwise use the same as the Password for LDAP server with administrative privileges
Login Attribute (EmailID)	For “None” option use “mail”

**Test(s) Enabled by this Test Configuration Form**

- Verify connection to LDAP server
- Verify user containers
- Extract all object classes
- Extract attributes of object class “Person”
- Retrieve display name for scheduler
- Authenticate scheduler user

## Calendar Server (Microsoft Exchange) Host Configuration Form

**Figure 7-18** The Calendar Server (Microsoft Exchange) Host Configuration Form

CTS-Man PreQualification Assistant [Profile: Default]

File System Help

LDAP Servers (Active Directory) **Calendar Server (Microsoft Exchange)** Unified CMs WebEx Server

**Host Configuration**

Host: 192.168.10.11

Bind Mode: ☐ Normal ☒ Secure

Port: 443

SMTP Domain: tsbu-tme.com

Logon Name: ctsman

SMTP LHS: ctsman

Password: \*\*\*\*\*

Certificate: C:\Documents and Settings\aglowack\Desktop\2007exch.cer [Browse...](#)

**Room Subscription**

Room Email IDs: room2@tsbu-tme.com  
room3@tsbu-tme.com  
room1@tsbu-tme.com [Add...](#) [Delete...](#)

[Execute Tests](#) [Abort Tests](#)

Test Description	Component	Status	Result
Fetch default context from LDAP server	LDAP Servers	Ready	<a href="#">View</a>
Verify connection to LDAP server	LDAP Servers	Ready	<a href="#">View</a>
Fetch and check LDAP version compatibility	LDAP Servers	Ready	<a href="#">View</a>
Verify user containers	LDAP Servers	Ready	<a href="#">View</a>
Extract all object classes	LDAP Servers	Ready	<a href="#">View</a>
Extract attributes of object class 'Person'	LDAP Servers	Ready	<a href="#">View</a>
Verify connection to Calendar Server	Calendar Server	Ready	<a href="#">View</a>

**Table 7-6** The Calendar Server (Microsoft Exchange) Host Configuration Fields

Field Name	Field Value
Host	The hostname or IP address of the Exchange server.
Bind Mode	If you set this to secure you'll need to provide a security certificate.
Port	In Normal bind mode the port setting is 80. In Secure bind mode the port setting default is 443.
SMTP LHS	Enter the CTS-Manager account or test account for full access or read access to rooms (endpoints).
Password	Enter the password for the CTS-Manager test account or Exchange administrative account, using English characters only.

**Table 7-6      The Calendar Server (Microsoft Exchange) Host Configuration Fields (continued)**

Field Name	Field Value
Certificate	The full pathname to the Exchange security certificate. This is needed only if you are using the Secure Bind Mode.
Logon Name	Enter the logon name for the full access or read access privileges to rooms (endpoints). Enter the logon name in the same form as the SMTP LHS.
Domain	Enter the domain for the logon name.
Room Email IDs	Enter the full email address for each CTS endpoint, up to 5.

**Test(s) Enabled by this Test Configuration Form**

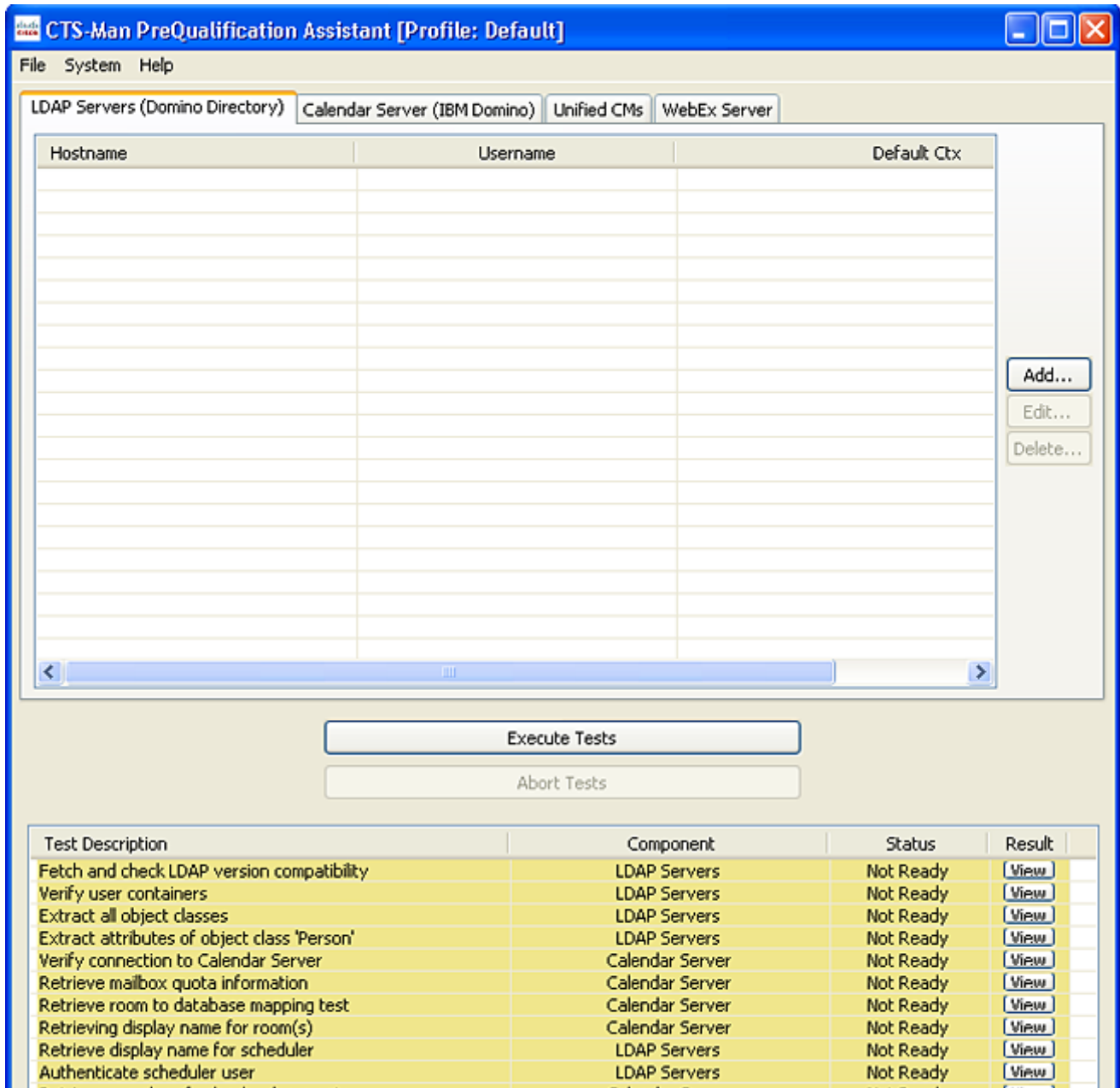
- Verify connection to Calendar Server
- Retrieve mailbox quota information
- Retrieving display name for room(s) (endpoints)
- Subscribe MS Exchange events for room (endpoint)

## Test Configuration Forms in an IBM Domino Environment

You can use the PreQualification Assistant to test your LDAP server when specifying a IBM Domino calendar server. This applies when the user selects Calender Server, “Microsoft Exchange.”

This window lists all the LDAP servers that have been configured for the CTS-Manager. If all of the servers have been configured, use the Execute Tests button to make sure that they have been configured correctly.

## LDAP Server IBM Domino Window



This window lists all the LDAP (Domino Directory) servers that have been configured for the CTS-Manager. If all of the LDAP servers have been configured, use the **Execute Tests** button to make sure that they have been configured correctly.

If it is necessary to change the configuration of one, highlight the line, and click the **Edit** button to change the configuration.

To remove one, highlight it and then click the **Delete** button.

When adding a LDAP server, click the **Add** button and the following configuration window appears.

## LDAP (Domino Directory) Host Configuration Form

**Figure 7-20** The LDAP Server (Domino Directory) Add/Edit Configuration Form

**Table 7-7** The LDAP Server (Domino Directory) Test Configuration Form Fields

Field Name	Field Value
Host	The hostname or IP address of the LDAP server.
Bind Mode	If you set this to secure you'll need to provide a security certificate.
Port	In Normal bind mode the port setting is 389. In Secure bind mode the port setting default is 636.
Username	Enter the Active Directory user account username (not the logon name) in the form <i>cn=ctm account</i>  <b>Note</b> You must also include the default context in the Username field. For example, <i>cn=ctm account,o=ciscoDev</i> .
Password	Password for LDAP server with read privileges.

**Table 7-7 The LDAP Server (Domino Directory) Test Configuration Form Fields (continued)**

Field Name	Field Value
Certificate	The full pathname to the LDAP security certificate. This is needed only if you are using the Secure Bind Mode.
Default Context	Enter the default context in the form <i>o=ciscoDev</i>
<b>Scheduler Authentication</b>	
User Containers	<p>The containers from which queries are performed to retrieve user objects. More than one user container or user object can be specified. The Cisco Telepresence server uses the values entered to search through the containers in sequence to retrieve user and meeting room (endpoint) information from the Directory Server. Additionally, these containers are used to retrieve user information for authentication.</p> <p>User containers are entered in the Entry field above the User Containers field. Use the Add button to add a user container to the list. To delete a user container from the list, select the specific user container and click Delete.</p>
Scheduler Username	The scheduler username is the value of an end user ID (the logon name).
Scheduler Password	When the user selects “None” option, then this is not needed for generic LDAP environment, otherwise use the same as the Password for LDAP server with administrative privileges
Login Attribute (EmailID)	For this field use “mail”.

**Test(s) Enabled by the Execute Tests button**

- Fetch and check LDAP version compatibility
- Verify user containers
- Extract all object classes
- Extract attributes of object class “Person”
- Retrieve display name for scheduler
- Authenticate scheduler user
- Verify connection to Unified CM servers



## Calendar Server (IBM Domino) Configuration Form

You can use the PreQualification Assistant to test your LDAP Calendar server configurations when specifying a IBM Domino Calendar server. This applies when from the pull-down menu, the user selects **System > Select Calendar Server > IBM Domino**.

The Calendar Server (IBM Domino) window appears as shown in [Figure 7-21](#)

**Figure 7-21** The Calendar Server (Domino Directory) Add/Delete Configuration Form

Test Description	Component	Status	Result
Fetch and check LDAP version compatibility	LDAP Servers	Not Ready	<a href="#">View</a>
Verify user containers	LDAP Servers	Not Ready	<a href="#">View</a>
Extract all object classes	LDAP Servers	Not Ready	<a href="#">View</a>
Extract attributes of object class 'Person'	LDAP Servers	Not Ready	<a href="#">View</a>
Verify connection to Calendar Server	Calendar Server	Not Ready	<a href="#">View</a>
Retrieve mailbox quota information	Calendar Server	Not Ready	<a href="#">View</a>
Retrieve room to database mapping test	Calendar Server	Not Ready	<a href="#">View</a>
Retrieving display name for room(s)	Calendar Server	Not Ready	<a href="#">View</a>
Retrieve display name for scheduler	LDAP Servers	Not Ready	<a href="#">View</a>
Authenticate scheduler user	LDAP Servers	Not Ready	<a href="#">View</a>
Retrieve samples of calendar documents	Calendar Server	Not Ready	<a href="#">View</a>
Verify connection to Unified CM servers	Unified CMs	Not Ready	<a href="#">View</a>

This window lists the Calendar server that has been configured for the CTS-Manager. If the server and the room (endpoint) subscriptions have been configured, use the Execute Tests button to make sure that they have been configured correctly.

If it is necessary to add the room email ID, enter the room email ID and click the **Add** button.

To remove one, highlight it and then click the **Delete** button.

**Table 7-8 The Calendar Server (IBM Domino) Host Configuration Form Fields**

Field Name	Field Value
Host	The hostname or IP address of the Domino Calendar server.
Bind Mode	If you set this to secure you'll need to provide a security certificate.
Port	In Normal bind mode the port setting is 80. In Secure bind mode the port setting default is 443.
Organization Name	Enter the Domino Organization name.
Username	Enter the account name used to log on to the Domino server. The format is determined by the Email ID fields in the Person object classes and attributes.
Password	Enter the password for the username. The user must have a minimum of read permission on the resource database being used to test.
Certificate	The full pathname to the Domino security certificate. This is needed only if you are using the Secure Bind Mode.
Resource DB	Enter the name of the resource DB. For example, <i>Telepres.nsf</i> .
<b>Room Subscription</b>	
Room Email IDs	Enter the full email id for each CTS endpoint. The format for each Email id is: <i>Testendpoint/Site1</i>

#### Test(s) Enabled by the Execute Tests button

- Verify connection to Calendar Server
- Retrieve mailbox quota information
- Retrieve room (endpoint) to database mapping test
- Retrieving display name for room(s) (endpoints)
- Retrieve samples of calendar documents

## Cisco Unified Communications Manager Server (IBM Domino) Configuration Window

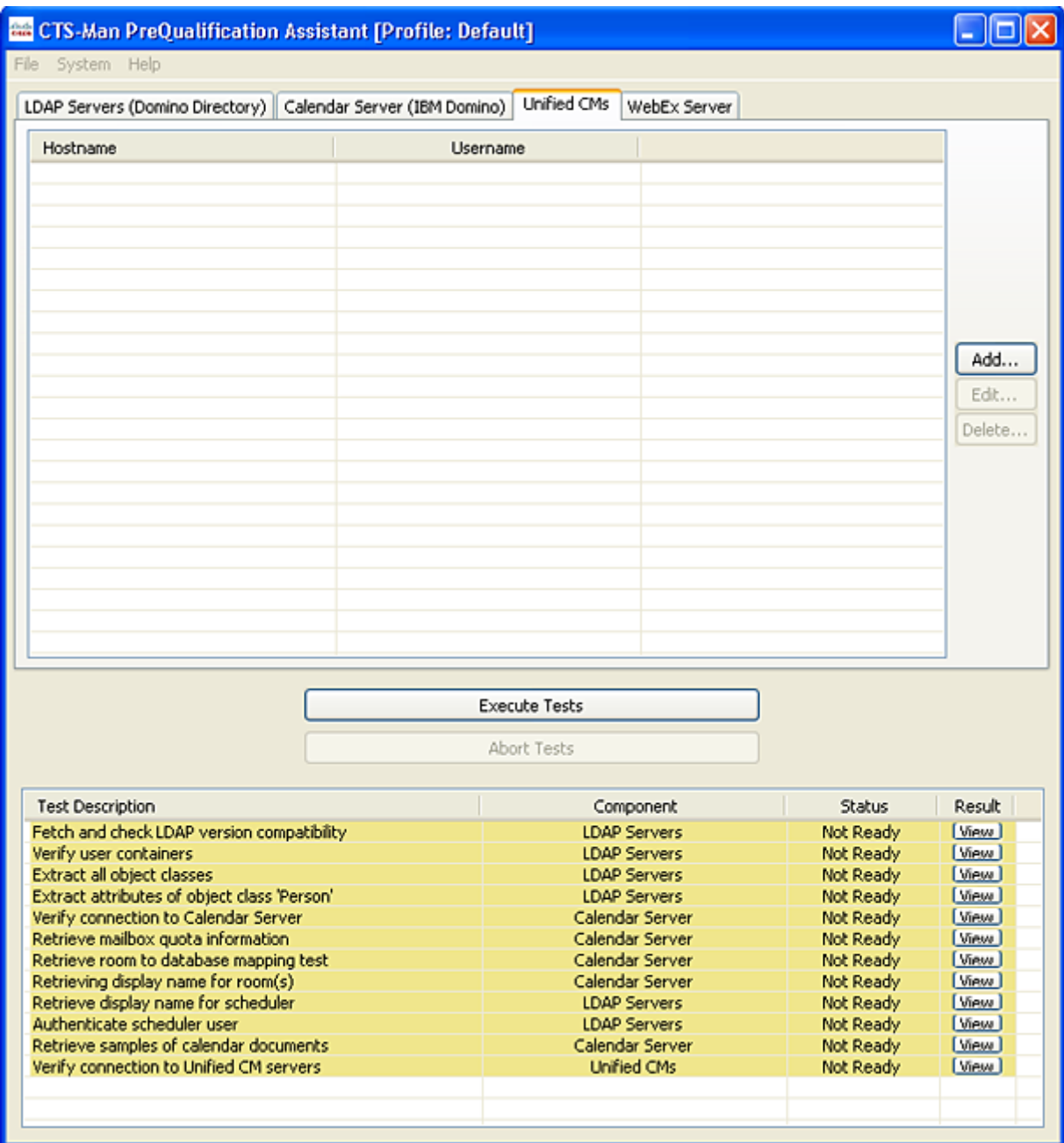
This window lists all the Cisco Unified CM (Unified CM) servers that have been configured for the CTS-Manager. If all of the Unified CM servers have been configured, use the Execute Tests button to make sure that they have been configured correctly.

If it is necessary to change the configuration of one, highlight the line, and click the **Edit** button to change the configuration.

To remove one, highlight it and then click the **Delete** button.

When adding a Unified CM, click the **Add** button and the following Host Configuration window appears.

### Unified Communications Manager Server (IBM Domino) Window



This window lists all the LDAP (Domino Directory) servers that have been configured for the CTS-Manager. If all of the LDAP servers have been configured, use the Execute Tests button to make sure that they have been configured correctly.

If it is necessary to change the configuration of one, highlight the line, and click the **Edit** button to change the configuration.

To remove one, highlight it and then click the Delete button.

When adding an LDAP server, click the **Add** button and the following configuration window appears.

## LDAP (Domino Directory) Host Configuration Form

**Figure 7-23** The Cisco Unified CM Add/Edit Configuration Form

**Table 7-9** The Cisco Unified CM Add/Edit Configuration Form Fields

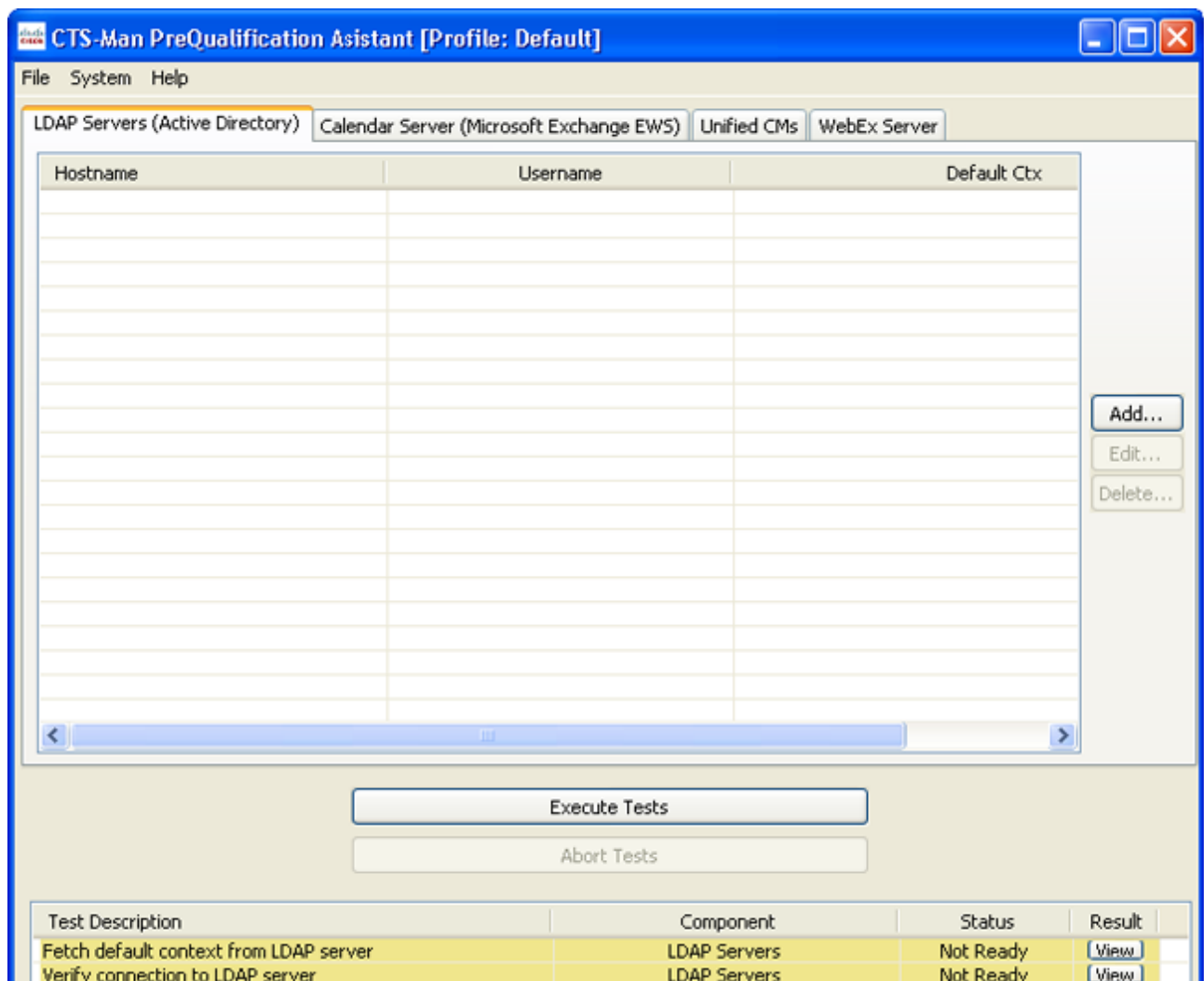
Field Name	Field Value
Host	The hostname or IP address of Cisco Unified CM
Bind Mode	This is always set to secure mode.
Port	This is always set to port 8443.
Username	Login account with Cisco Unified CM Application Username. The admin username is not needed.
Password	Password for Cisco Unified CM Admin account.
Certificate	The full pathname to the Cisco Unified CM security certificate.
Save	Use this button to save the configuration.
Cancel	Cancel from this window if not adding a new Unified CM or editing the configuration.

## Test Configuration Forms in a Microsoft Exchange Web Services (EWS) Environment

You can use the PreQualification Tool to test your LDAP server when specifying a Microsoft Exchange EWS calendar server. This applies when the user selects Calendar Server, “Microsoft Exchange EWS.”

This window lists all the LDAP servers that have been configured for the CTS-Manager. If all of the servers have been configured, use the Execute Tests button to make sure that they have been configured correctly.

**Figure 7-24** *LDAP Servers with Microsoft Exchange EWS Calendar Server window*



This window lists all the Microsoft LDAP servers that have been configured for the CTS-Manager. If all of the servers have been configured, use the Execute Tests button to make sure that they have been configured correctly.

If it is necessary to change the configuration of one, highlight the line, and click the **Edit** button to change the configuration and the Host Configuration window appears, refer to [Figure 7-25](#).

To remove one, highlight it and then click the **Delete** button.

When adding another LDAP server, click the **Add** button and the following configuration window appears.

## LDAP Server (Active Directory) Add/Edit Configuration Form

This is the same configuration form that appears when adding any Microsoft Exchange server.

**Figure 7-25** The LDAP Server (Active Directory) Add/Edit Configuration Form

**Table 7-10** LDAP Server (Active Directory) Test Configuration Form Fields

Field Name	Field Value
Host	The hostname or IP address of the LDAP server.
Bind Mode	If you set this to secure you'll need to provide a security certificate.
Port	In Normal bind mode the port setting is 389. In Secure bind mode the port setting default is 636.
Username	Enter the Username as the user fully qualified domain name.  <b>Note</b> You also include the default context in the Username field. Examples are: <i>cn=administrator, cn=users, dc=mycompany, dc=com.</i>

**Table 7-10 LDAP Server (Active Directory) Test Configuration Form Fields (continued)**

Field Name	Field Value
Password	Password for LDAP server with administrative privileges.
Certificate	The full pathname to the LDAP security certificate. This is needed only if you are using the Secure Bind Mode.
NonDefault or Default Context	The NonDefault button is selected as the default. To change this, select enter the default context in the form <i>dc=mycompany, dc=com</i>
<b>Scheduler Authentication</b>	
User Containers	The containers from which queries are performed to retrieve user objects. More than one user container or user object can be specified. The Cisco Telepresence server uses the values entered to search through the containers in sequence to retrieve user and meeting room (endpoint) information from the Directory Server. Additionally, these containers are used to retrieve user information for authentication.  User containers are entered in the Entry field above the User Containers field. Use the Add button to add a user container to the list. To delete a user container from the list, select the specific user container and click Delete.
Scheduler Username	The scheduler username is the value of an end user ID.
Scheduler Password	The password associated with the scheduler username.
Login Attribute (EmailID)	Use the “proxyAddresses” EmailID attribute.

**Test(s) Enabled by the Execute Tests Button**

- Fetch default context from LDAP server
- Verify connection to LDAP server
- Fetch and check LDAP version compatibility
- Verify user containers
- Extract all object classes
- Extract attributes of object class “Person”
- Verify connection to Calendar Server
- Retrieve mailbox quota information
- Retrieving display name for room(s) (endpoints)
- Subscribe MSEWS events for room (endpoint)



- Retrieve display name for scheduler
- Authenticate scheduler user

## LDAP Server Microsoft Exchange EWS Calendar Server Configuration Form

When you select the Calendar Server tab, [Figure 7-26](#) appears. This window allows you to configure the calendar server for Microsoft Exchange EWS and add or delete room (endpoint) subscriptions.


**Figure 7-26** LDAP Calendar Server Microsoft Exchange EWS Configuration Window

Test Description	Component	Status
Fetch default context from LDAP server	LDAP Servers	Not Ready
Verify connection to LDAP server	LDAP Servers	Not Ready
Fetch and check LDAP version compatibility	LDAP Servers	Not Ready

**Table 7-11** Calendar Server (Microsoft Exchange) Host Configuration Form Fields

Field Name	Field Value
Host	The hostname or IP address of the Exchange server.
Bind Mode	If you set this to secure you'll need to provide a security certificate.

**Table 7-11**      **Calendar Server (Microsoft Exchange) Host Configuration Form Fields (continued)**

Field Name	Field Value
Port	In Normal bind mode the port setting is 80. In Secure bind mode the port setting default is 443.
Domain	Enter the domain for the logon name.
Username	<p>Enter the username for the Exchange EWS server.</p> <p><b>Note</b>    If you are using Windows authentication, the format is: <b>domain\username</b>.  If you are using basic authentication, the format is: <b>username@ldapdomainname.com</b></p> <p> <b>Caution</b>    If the CTS-Manager user logon name is different from the LHS of the email ID and there is no matching email ID for the user, Microsoft Exchange EWS will fail the mailbox quota test. To avoid this, add a secondary email ID that uses the CTS-Manager logon name as the LHS of the email ID appended with the SMTP domain.</p>
Password	Enter the password for the CTS-Manager test account or Exchange administrative account, using English characters only.
Certificate	The full pathname to the Exchange security certificate. This is needed only if you are using the Secure Bind Mode.
<b>Room Subscription</b>	
Room Email IDs	Enter the full email address for each CTS endpoint, up to 5.

## WebEx Server

On this tab you configure a connection to the WebEx scheduling server, necessary for enabling the WebEx feature in CTS-Manager. The purpose of this is to test connectivity to the WebEx site. This information is not imported into CTS-Manager during first-time setup.

**Figure 7-27** WebEx Server Window

**CTS-Man PreQualification Assistant [Profile: Default]**

File System Help

LDAP Servers (Active Directory) Calendar Server (Microsoft Exchange) Unified CMs **WebEx Server**

**Host Configuration**

Host:

Bind Mode: ☐ Normal ☒ Secure

Site URL:

Admin Username:

Admin Access Code:

Certificate:

Test Description	Component	Status	Result
Fetch default context from LDAP server	LDAP Servers	Not Ready	<a href="#">View</a>
Verify connection to LDAP server	LDAP Servers	Not Ready	<a href="#">View</a>
Fetch and check LDAP version compatibility	LDAP Servers	Not Ready	<a href="#">View</a>
Verify user containers	LDAP Servers	Not Ready	<a href="#">View</a>
Extract all object classes	LDAP Servers	Not Ready	<a href="#">View</a>
Extract attributes of object class 'Person'	LDAP Servers	Not Ready	<a href="#">View</a>
Verify connection to Calendar Server	Calendar Server	Not Ready	<a href="#">View</a>
Retrieve mailbox quota information	Calendar Server	Not Ready	<a href="#">View</a>
Retrieving display name for room(s)	Calendar Server	Not Ready	<a href="#">View</a>
Subscribe MS Exchange events for room	Calendar Server	Not Ready	<a href="#">View</a>
Authenticate scheduler user	LDAP Servers	Not Ready	<a href="#">View</a>
Retrieve display name for scheduler	LDAP Servers	Not Ready	<a href="#">View</a>
Verify connection to Unified CM servers	Unified CMs	Not Ready	<a href="#">View</a>
Verify connection to WebEx server	WebEx Server	Ready	<a href="#">View</a>
Verify SSO authentication from WebEx server	WebEx Server	Ready	<a href="#">View</a>

**Table 7-12 WebEx Server Host Configuration Form Fields**

Field	Description or Settings
Host	The configured hostname of the WebEx scheduling server.
Site URL	The address used to construct the URL that's used to access this meeting. This is the actual URL that CTS-Manager uses to communicate with WebEx. This is published in the email from CTS-Manager, and is displayed to users on the WebEx page of the CTS phone UI.
Admin Username	WebEx administrator's username (provided by the WebEx team)
Admin Access Code	WebEx administrator's access code (provided by the WebEx team)
Certificate	<p>Certificate from the hostname (WebEx scheduling server)</p> <p><b>Note</b> To get the certificate, open a web browser window and go to the hostname URL and download the certificate to your computer, then click Browse to select it and upload it to CTS-Manager. For detailed instructions on downloading the certificate with different browsers, see <a href="#">First-Time Scheduling of TelePresence Meetings with WebEx</a>, page 12-14.</p>