

CHAPTER 10

Initializing Cisco TelePresence Manager

First Published: Nov 2, 2011, OL-22226-01

Content

- [Introduction, page 10-1](#)
- [Post-Install Guidelines for CTS-Manager, page 10-2](#)
- [Initializing CTS-Manager After Installation, page 10-3](#)
- [Required Information and Equipment, page 10-3](#)
- [Initialization Procedure, page 10-4](#)
 - [Log In and Set Time Zone, page 10-4](#)
 - [Select Configuration Options, page 10-5](#)
 - [Select Calendar Server, page 10-9](#)
 - [Configure LDAP Servers, page 10-10](#)
 - [Configure Unified CM, page 10-14](#)
 - [Configure Calendar Server, page 10-15](#)
 - [Configure Database Backup Schedule, page 10-19](#)
- [Dashboard for Verification of Installation Status, page 10-21](#)

Introduction

After a first-time or fresh installation of Cisco TelePresence Manager, the next step is to initialize the program.



Note

If you have upgraded to Cisco TelePresence Manager 1.8, you do not initialize the program but you must install an endpoint license. Without this license, your configured endpoints will not be recognized and you will not be able to schedule meetings. For more information, go to [Chapter 11, “Additional Installation Configurations for Cisco TelePresence Manager”](#).

Initializing Cisco TelePresence Manager enables access to information sources such as Microsoft Exchange Server for meeting requests from Microsoft Outlook, Active Directory for accessing user and conference room (endpoint) information, and Cisco Unified Communications Manager for room (endpoint) availability and telephone support.

The tasks for initializing the Cisco TelePresence Manager are described in the following sections.

Post-Install Guidelines for CTS-Manager

The purpose of this section is to outline the information you need to initialize CTS-Manager after either a fresh or first-time installation.

The tasks required for additional configurations of CTS-Manager are provided in the following table.

Table 10-1 *Post-Install Procedure Guidelines for Setting Up CTS-Manager*

Setup Procedure Guidelines after Installing CTS-Manager	Description	Location
Initializing CTS-Manager	After first-time installation of the CTS-Manager software, the next process is initializing CTS-Manager to enable access to information sources such as Microsoft Exchange Server for meeting requests from Microsoft Outlook, Active Directory for accessing user and conference room (endpoint) information, and Cisco Unified Communications Manager for conference room (endpoint) availability and telephone support	Current Chapter
Additional Configuration Procedures for CTS-Manager	The administrator makes use of the System Configuration window to perform system configuration tasks such as uploading licenses, synchronizing system databases, managing security, and reconfigure system settings	Chapter 11, “Additional Installation Configurations for Cisco TelePresence Manager”
Configuring Cisco TelePresence WebEx OneTouch for CTS-Manager	Describes how to set up Cisco TelePresence WebEx OneTouch in CTS-Manager, which allows WebEx participants to join TelePresence meetings.	Chapter 13, “Configuring Cisco WebEx OneTouch for Cisco TelePresence Manager”

Table 10-1 *Post-Install Procedure Guidelines for Setting Up CTS-Manager (continued)*

Setup Procedure Guidelines after Installing CTS-Manager	Description	Location
Monitoring and Supporting CTS-Manager	Describes the support features available when you log into CTS-Manager using a Live Desk role.	Chapter 14, “Monitoring and Supporting Cisco TelePresence Manager”
Email and Meeting Action Requirements	The Calendar service (either Microsoft Exchange or IBM Domino) sends an acceptance email to the meeting organizer, with the notice that the rooms (endpoints) have been reserved and placed on the calendar. CTS-Manager also sends either a Confirmation email or an Action Required email to the meeting organizer when a meeting is scheduled.	Chapter 14, “Meeting Manager and CTS-Manager Emails”

If at any time you encounter problems, go to [Chapter 17, “Troubleshooting Cisco TelePresence Manager”](#) to see how to correct the problem.

Initializing CTS-Manager After Installation

This section contains the following topics pertaining to initialization:

- [Required Information and Equipment, page 10-3](#)
- [Initialization Procedure, page 10-4](#)

To initialize Cisco TelePresence Manager, you must enter contact and access information for your Microsoft Exchange Server, Lightweight Directory Access Protocol (LDAP) server, and Cisco Unified CM in a series of one-time-only, post-installation initialization windows.

Required Information and Equipment

To set up and initialize Cisco TelePresence Manager, you need the information previously entered or created during pre-installation.

Additionally, Cisco TelePresence Manager must have network access to a computer running Windows Internet Explorer version 6.1.3, Microsoft Exchange Server and Active Directory, (set to level 2) server, Microsoft EWS server, or IBM Domino Server and Domino Directory Server, and Cisco Unified Communications Manager.

You must also have an endpoint license in order to fully initialize CTS-Manager. If you do not have this license, you will not be able to add rooms (endpoints) to CTS-Manager. After installation and initialization, go to the Configure > License window and click the License Files tab to upload the license.

Initialization Procedure

To initialize CTS-Manager, follow these steps:

1. [Log In and Set Time Zone, page 10-4](#)
2. [Select Configuration Options, page 10-5](#)
3. [Select Calendar Server, page 10-9](#)
4. [Configure LDAP Servers, page 10-10](#)
5. [Configure Unified CM, page 10-14](#)
6. [Configure Calendar Server, page 10-15](#)
7. [Configure Database Backup Schedule, page 10-19](#)

Log In and Set Time Zone

To log in and set your time zone:

- Step 1** Using Microsoft Explorer, go to the Cisco TelePresence Manager server name or IP address. See the following example.

`https:// server hostname or IP address`

- Step 2** At the product page that appears, click **Cisco TelePresence Manager**.

- Step 3** At the login page, enter the SysAdmin username and password and click **Log In**.



Note

SysAdmin username and password are the Administrator ID and password that were created during installation of CTS-Manager.

The Time Zone Setting window appears.

Figure 10-1 Timezone Setting Window

- Step 4** Select your location and locale using the drop-down menus and click **Continue**.

A window pops up asking you if you want to apply changes.

- Step 5** Click **OK**.

The first-time setup welcome window appears displaying the following information about the CTS-Manager server hardware and software you have installed:

- SKU
- Hostname
- IP Address
- Subnet Mask
- MAC Address
- Hardware Model
- Software Versions
- OS Version

Step 6 Click **Next**.

The License Agreement window appears.

Step 7 Review the license agreement and check the check box next to **I accept the terms of the license agreement**.

Step 8 Click **Next**.

Step 9 The Server Roles window appears.

Server Roles

The Server Roles window allows you to choose how you want to deploy the CTS-Manager server.

The options are:

- A standalone server

Choose this to set up CTS-Manager as a standalone server to manage up to 500 endpoints.

- A server in a cluster

Choose this to set up CTS-Manager as part of a cluster to manage more than 500 endpoints.



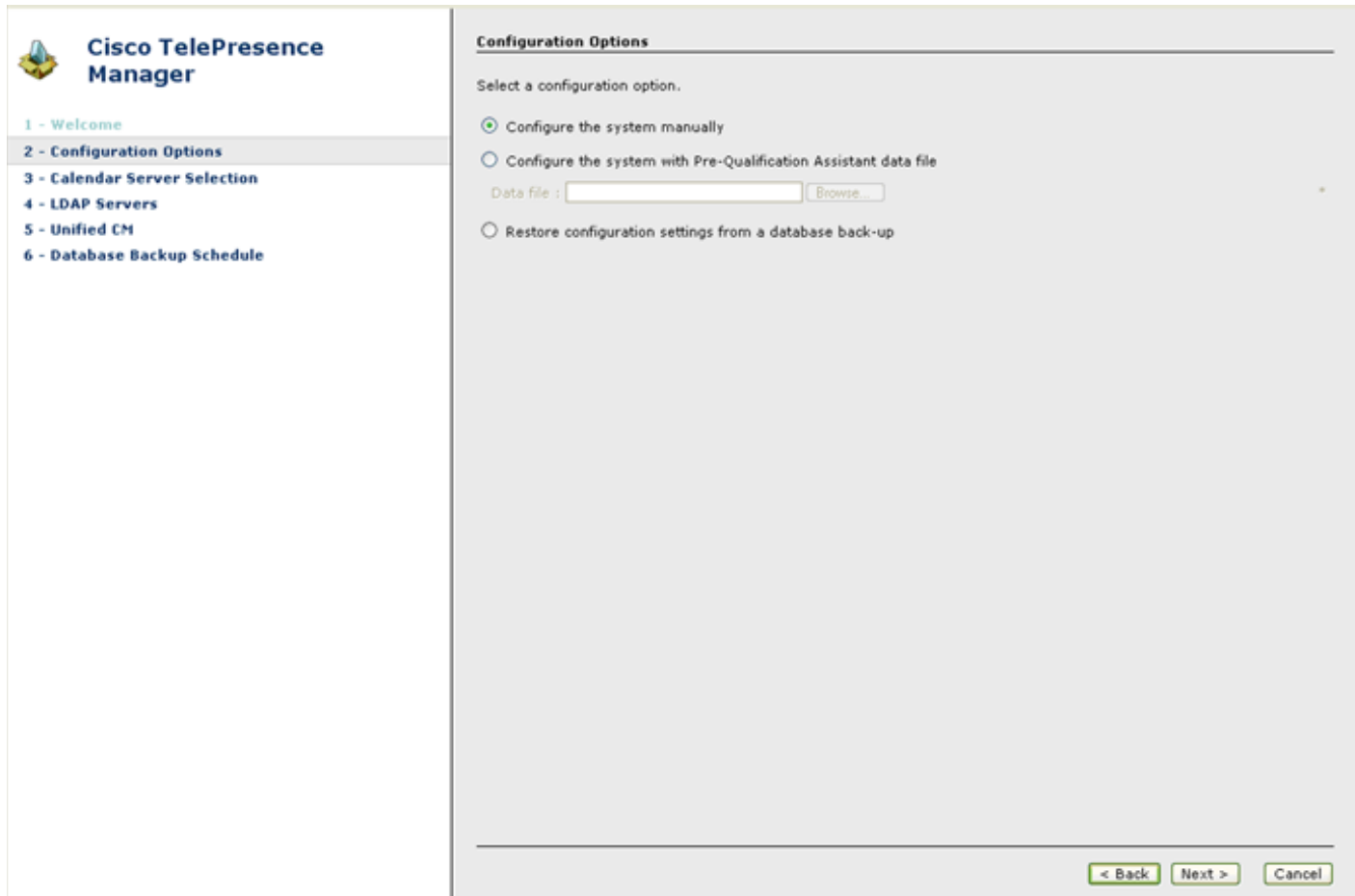
Warning

Clustering Support Discontinued Cisco no longer provides support for the clustering feature originally introduced in release 1.8. For questions, contact Ron Lewis: ronlewis@cisco.com.

Select a server role and click **Next**.

Select Configuration Options

The Configuration Options window allows you to configure the system manually or to restore the configuration settings from a database backup.

Figure 10-2 Configuration Options Window - Manual Configuration

The Configuration Options window provides three options for configuring CTS-Manager:

- [Configure the System Manually, page 10-6](#)
- [Configure the System with PreQualification Assistant Data File, page 10-7](#)
- [Restore Configuration Settings from a Database Backup, page 10-8](#) (Not available for Commercial Bundle)

Configure the System Manually

This option allows you to set up your configurations for a first-time setup. You are not able to do a restore or use the PreQualification data files.

You will have to add the server information in all the screens.

If you are setting up Microsoft Exchange as your calendar server for the first time:

- Select **Configure the system manually** and click **Next**.

The Calendar Server window appears.

Go to [Select Calendar Server, page 10-9](#) for more information

Configure the System with PreQualification Assistant Data File

If you choose to configure CTS-Manager using the PreQualification data, this option allows you to select the data file that you have previously set up. Refer to [Chapter 7, “Installing and Configuring Cisco PreQualification Assistant”](#)

Figure 10-3 Configuration Options - PreQualification Configuration

To configure the system using the Pre-Qualification Assistant data file:

-
- Step 1** Click **Browse**, select the data file, and click **Open**.
 - Step 2** Enter the password you created when you exported the file from the PreQualification Assistant.
 - Step 3** Click **Next**.
- The Calendar Server Selection window appears.
- Go to [Select Calendar Server, page 10-9](#).
-



Note

If this option is selected, it is necessary to test the LDAP servers connections through the PreQualification Assistant.

Restore Configuration Settings from a Database Backup

This option allows you to select the data that you have previously backed up. Refer to [Chapter 11, “Additional Installation Configurations for Cisco TelePresence Manager”](#), section, Database - Status, Backup, and Restore for further details on backing up your system database.



Note

This option is not available with the commercial bundle of CTS-Manager.

To restore configuration settings from a database backup:

- Step 1** Select the **Restore configuration settings from a database backup** option and click **Next**.
- Step 2** The Restore window appears.
- Step 3** Fill in the fields by providing the path of the recovery file and the filename.

Figure 10-4 System Configuration - Restore Window

- Step 4** After filling in the details, click the **Restore Now** button. The backup data is restored to the CTS-Manager server.

After selecting the configuration option and setting up the data, the next step is to set up the calendar server. Go to [Select Calendar Server, page 10-9](#).

Select Calendar Server

The Calendar Server Selection window allows you to select the calendaring server for your system. The options are:

- Microsoft Exchange
- MS Exchange Web Services (EWS)
- IBM Domino
- Scheduling API
- No Calendaring Service

To select a calendar server:

Step 1 Select a calendar server from the displayed options.



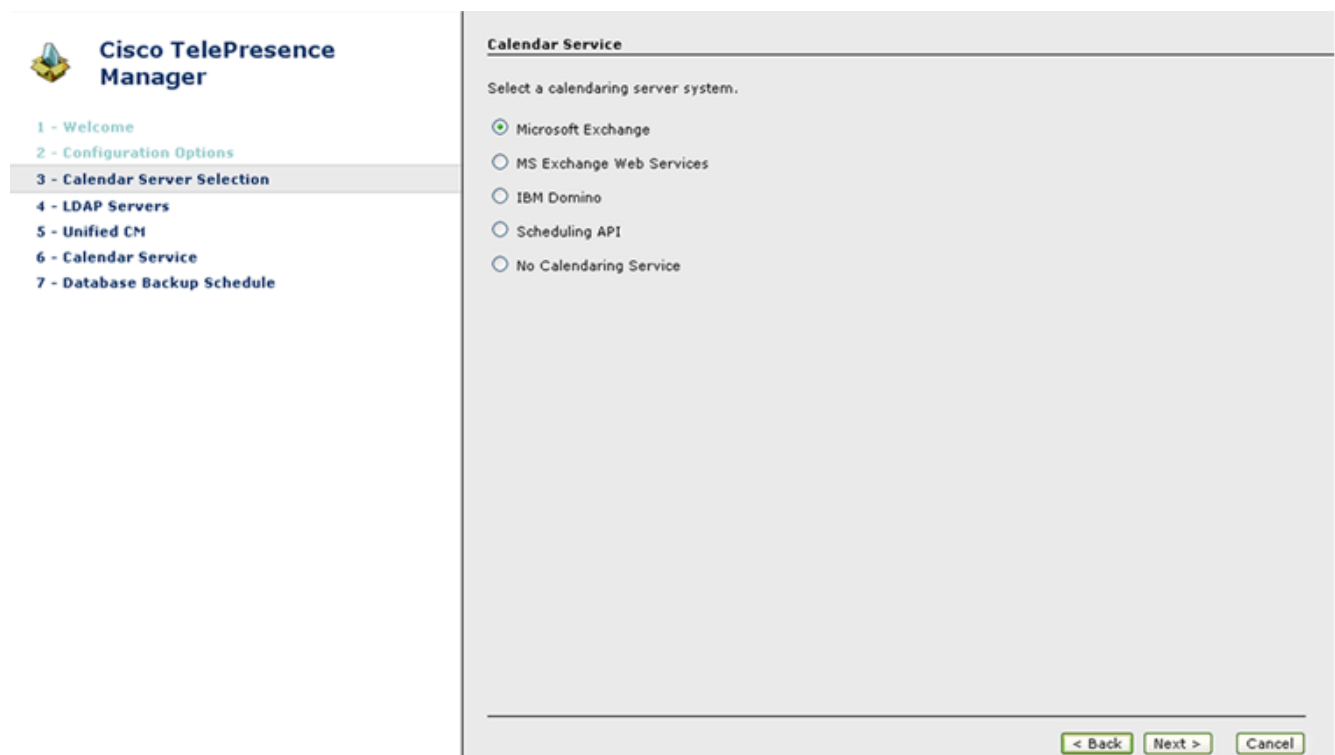
Note If you choose Scheduling API, review the license agreement and check the check box next to **I accept the terms of the license agreement**.

Step 2 Click Next.

The LDAP Servers window opens.

Go to [Configure LDAP Servers, page 10-10](#).

Figure 10-5 Calendar Service Window



Configure LDAP Servers

Lightweight Directory Access Protocol (LDAP) is a protocol definition for accessing directories. This window provides you with the records of the LDAP servers that have been set up. To add new ones or to edit the one listed, select the record that is listed, then click either the **New** or **Edit** button. For more information about setting up LDAP servers, refer to [Chapter 11, “Additional Installation Configurations for Cisco TelePresence Manager”](#)

If you have selected the “Configure the system with PreQualification Assistant data file” option, you must select the server record and click Edit. The next window that appears gives you the setup information, you must test the connection. You have to do this with all the LDAP servers that you have configured before you can click the Next button.

To configure an LDAP Server:

-
- Step 1** Select the first listed LDAP server, then click **Edit**. If adding a new LDAP server, click **New**.
- Step 2** When the LDAP Servers popup window appears, make sure the existing information is correct or enter the new LDAP information. For further information, refer to [LDAP Server, page 11-14](#). If necessary, make changes in the fields.
- Click the **Test Connection** button.
- The system tests the connection information. A popup window opens and displays the message “Connection to <....> Server was Verified.” Click **OK**, then click **Next**.
- Step 3** The LDAP Server window re-appears. If you have more LDAP servers to test, repeat steps 1 through 3.
- Step 4** If all the server settings have been tested, click the **Next** button.
- The Unified CM window appears. Go to [Configure Unified CM, page 10-14](#).
-



Note

If the system cannot verify the container information, the popup window directs the user to re-enter the information.

Figure 10-6 LDAP Server Window for Microsoft Exchange

Cisco TelePresence Manager

- 1 - Welcome
- 2 - Configuration Options
- 3 - Calendar Server Selection
- 4 - LDAP Servers**
- 5 - Unified CM
- 6 - Calendar Service
- 7 - Database Backup Schedule

LDAP Server

Enter the user container Relative Distinguished Names (RDNs) for LDAP users. The RDNs must be validated successfully before you can advance to the next step. Select the object class and its attribute to map to the corresponding object field. Sample data must be visually verified before you can advance to the next step.

Hostname	User Name	Default context
<input type="radio"/> example-ad06	cn=super user, cn=users, DC=evte, DC=com	DC=evte, DC=com

Showing 1-1 of 1 10 per page Go

New... Edit... Delete Refresh

Page 1 of 1

< Back Next > Cancel

Exchange LDAP Mappings

The following table describes the settings for the Person fields in both the New and Edit windows.

Table 10-2 LDAP Person - Objects and Attributes Microsoft Exchange

Application Object	Application Attribute	LDAP Object Class	LDAP Attribute
Person			
	Title	Person	title
	Location	Person	l
	DeptID	Person	department
	Country	Person	co

Note The Object Class mappings need not be changed and are displayed ready only. Only the attribute mappings need to be changed if required.

Figure 10-7 LDAP Servers Window for IBM Domino

Cisco TelePresence Manager

- 1 - Welcome
- 2 - Configuration Options
- 3 - Calendar Server Selection
- 4 - LDAP Servers**
- 5 - Unified CM
- 6 - Calendar Service
- 7 - Database Backup Schedule

LDAP Server

Enter the user container Relative Distinguished Names (RDNs) for LDAP users. The RDNs must be validated successfully before you can advance to the next step. Select the object class and its attribute to map to the corresponding object field. Sample data must be visually verified before you can advance to the next step.

Hostname	User Name	Default context
<input type="radio"/> example-domino08	cn=super user, cn=users,DC=test,DC=com	DC=test,DC=com

Showing 1-1 of 1 10 per page Go

New... Edit... Delete Refresh

Page 1 of 1

< Back Next > Cancel

Domino LDAP Mappings

These attributes are used by the Domino LDAP server to retrieve the user's e-mail and display name information. For most of the Domino deployments, this information does not have to be changed.



Caution The object and attribute mappings for Domino/Directory Server deployments are listed in [Table 10-3](#) and cannot be changed after installing and configuring CTS-Manager.

Table 10-3 LDAP Person - Objects and Attributes for IBM Domino

Application Object	Application Attribute	LDAP Object Class	LDAP Attribute
Person			
	Country	Person	c
	EmailID	Person	mail
	DeptID	Person	department

Table 10-3 LDAP Person - Objects and Attributes for IBM Domino (continued)

Application Object	Application Attribute	LDAP Object Class	LDAP Attribute
	SchedulerName	Person	cn Note Do not change this value. If this value is changed incorrectly, meetings will not have the correct information.
	DisplayName	Person	displayname
	Title	Person	title
	Location	Person	location

Figure 10-8 LDAP Servers Window for Scheduling API

Cisco TelePresence Manager

- 1 - Welcome
- 2 - Configuration Options
- 3 - Calendar Server Selection
- 4 - LDAP Servers**
- 5 - Unified CM
- 6 - Calendar Service
- 7 - Database Backup Schedule

LDAP Server

Enter the user container Relative Distinguished Names (RDNs) for LDAP users. The RDNs must be validated successfully before you can advance to the next step. Select the object class and its attribute to map to the corresponding object field. Sample data must be visually verified before you can advance to the next step.

Hostname	User Name	Default context
example_ldap	cn=super user, cn=users,DC=evte,DC=com	DC=evte,DC=com

New... Edit... Delete Refresh

Showing 1-1 of 1 10 per page Go

< Back Next > Cancel

Configure Unified CM

This window allows you to add a new Cisco Unified Communications Manager (Unified CM) server or review configured Unified CM server(s) and verify their setup.

To configure Unified CM:

-
- Step 1** Select the first listed Unified CM server, then click **Edit**. If adding a new Unified CM server, click **New**.
- Step 2** When the Unified CM Service window appears, make sure the existing information is correct or enter new information. For further information, refer to [Unified CM, page 11-54](#). If necessary, make changes in this window.
- Click the **Test Connection** button. The system tests the connection information. A popup window opens and displays the message “Connection to <...> Server was Verified.” Click **OK**, then click **Next**.
- Step 3** The Unified CM Service window re-appears. If you have more server connections to test, repeat Steps 1 through 3.
- Step 4** If all the server settings have been tested, click the **Next** button.
-



Note

If the system cannot verify the connection, the popup window directs the user to re-enter the information.

The calendar server window appears. Go to [Configure Calendar Server, page 10-15](#).

Figure 10-9 Unified CM Window for Microsoft Exchange

Cisco TelePresence Manager

1 - Welcome
2 - Configuration Options
3 - Calendar Server Selection
4 - LDAP Servers
5 - Unified CM
6 - Calendar Service
7 - Database Backup Schedule

Unified CM

Configure at least one Cisco Unified CM server.

Showing 1-1 of 1 10 per page Go

Hostname	IP Address	Application Username
<input type="radio"/> example-ad-1	192.168.10.24	example_user

New... Edit... Delete Refresh

Page 1 of 1

< Back Next > Cancel

Configure Calendar Server

This window allows you to review the calendar server that was configured, make changes if needed, and verify the configuration. Microsoft Exchange and Domino calendaring server examples are shown below. For further information about calendar server configurations, refer to [Chapter 11, “Additional Installation Configurations for Cisco TelePresence Manager”](#).

To configure the calendar server:

- Step 1** Review the existing calendar server information or enter new calendar server information.
- For information about Microsoft Exchange fields, see [Explanation of Microsoft Exchange Fields, page 10-16](#).
 - For information about IBM Domino fields, see [Explanation of IBM Domino Fields, page 10-17](#).
 - For information about Scheduling API fields, see [Explanation of Scheduling API Fields, page 10-19](#).
- Step 2** After filling in all of the fields, click **Test Connection** to verify this configuration.
- Step 3** When the verification is completed, click the **Next** button.

The Database Backup Schedule window appears. Go to [Configure Database Backup Schedule, page 10-19](#).

Figure 10-10 Calendar Server Window for Microsoft Exchange

Cisco TelePresence Manager

1 - Welcome
2 - Configuration Mode
3 - Configuration Options
4 - Calendar Server Selection
5 - LDAP Servers
6 - Unified CM
7 - Calendar Server
8 - Database Backup Schedule

Microsoft Exchange

Enter configurations for Microsoft Exchange calendaring server.

Host: *

Bind Method: ☒ Secure ☐ Normal

Port: *

SMTP Domain: *

Logon Name:

SMTP LHS: *

Password: *

Certificate: *

- Host: the Microsoft Exchange server host name or IP address.
- Logon Name: user account that has read access to the Exchange server. This account name is used to log on to an Active Directory domain.
- SMTP LHS/Password: Left hand side of the email address of the user account that has read access to the Exchange server. Password necessary for authentication.

* Required Fields

Explanation of Microsoft Exchange Fields

- **Host**
Host is the hostname or IP address of the Microsoft Exchange Server host.
- **Bind Method**
The bind method indicates the desired level of security.
 - Secure—Secure Socket Layer (SSL) connection requires the Distinguished Encoding Rules (DER) Certificate for the Microsoft Exchange Server. You must complete the Certificate field on this window before you can proceed.
 - Normal—The Cisco TelePresence Manager communicates with the Microsoft Exchange Server in cleartext using HTTP.
- **Port**
The default value is 80, for secure mode the value is 443.
- **SMTP Domain Name**
This field requires a sequence of case-insensitive ASCII labels separated by dots (for example, “cisco.com”)—defined for subtrees in the Internet Domain Name System and used in other Internet identifiers, such as hostnames, mailbox names, and URLs.
- **Logon Name**
The logon username should have read access to the Exchange server and rooms (endpoints). This account name is used to logon to an Active Directory domain.
- **SMTP LHS**
Left hand side of the email address of the user account that has read access to the Exchange Server. Password is necessary for authentication.
- **Password**
The user password allows access to the Microsoft Exchange Server.
- **Certificate**
A certificate is a digital representation of user or device attributes, including a public key, that is signed with an authoritative private key. In a self-signature, the signature can be verified using the public key contained in the certificate.



Note

Click the **Browse...** button to choose the Microsoft Exchange Server SSL certificate. If you selected Secure bind method, this value is required.

Figure 10-11 Calendar Server Window for IBM Domino

Cisco TelePresence Manager

1 - Welcome
2 - Configuration Mode
3 - Configuration Options
4 - Calendar Server Selection
5 - LDAP Servers
6 - Unified CM
7 - Calendar Server
8 - Database Backup Schedule

IBM Domino

Enter configurations for IBM Domino calendaring server.

Host:

Bind Method: ☒ Secure ☐ Normal

Port:

Organization Name:

Username:

Password:

Polling Interval (minutes):

Certificate:

- Host: the IBM Domino server host name or IP address.
- Logon Name: user account that has read access to the Domino server. This account name is used to log on to a Domino LDAP server domain.
- SMTP LHS/Password: Left hand side of the email address of the user account that has read access to the Domino server. Password necessary for authentication.

Required Fields

< Back Next > Cancel

Explanation of IBM Domino Fields

- **Host**
Host is the hostname or IP address of the IBM Domino host.
- **Bind Method**
The bind method indicates the desired level of security.
 - Secure—Secure Socket Layer (SSL) connection requires the Distinguished Encoding Rules (DER) Certificate for the IBM Domino server. You must complete the Certificate field on this window before you can proceed.
 - Normal—The CTS-Manager communicates with the IBM Domino server in cleartext using HTTP.



Note

If you selected Secure bind method, this value is required.

- **Port**
The default value is 80.
- **Organization Name**
This field requires a sequence of case-insensitive ASCII labels separated by dots (for example, “cisco.com”)—defined for subtrees in the Internet Organization Name System and used in other Internet identifiers, such as hostnames, mailbox names, and URLs.
- **Username**
The username provides login access to the IBM Domino server.

- **Password**

The user password allows access to the IBM Domino server.

- **Polling Interval (minutes)**

This is the amount of time between intervals that the CTS-Manager will poll for Calendar information. The interval times for polling are from a minimum of 1 to a maximum of 360 minutes.

- **Certificate**

A certificate is a digital representation of user or device attributes, including a public key, that is signed with an authoritative private key. In a self-signature, the signature can be verified using the public key contained in the certificate.

**Note**

Click the **Browse...** button to choose the IBM Domino server SSL certificate. If you selected Secure bind method, this value is required.

Figure 10-12 Calendar Server Window for Scheduling API

Cisco TelePresence Manager

- 1 - Welcome
- 2 - Configuration Options
- 3 - Calendar Server Selection
- 4 - LDAP Servers
- 5 - Unified CM
- 6 - Calendar Service**
- 7 - Database Backup Schedule

Scheduling API

Enter API Services resource properties. Click Verify before advancing to the next step.

Host: *

Bind Method: ☐ Secure ☒ Normal

Port: *

Logon Name:

Password: *

Certificate: *

- Host: the API Services server host name or IP address.
- Username/Password: user account that has read access to the API services server. Password necessary for authentication.

* Required Fields

< Back Next > Cancel

Explanation of Scheduling API Fields

- **Host**
Host is the hostname or IP address scheduling API server.
- **Bind Method**
The bind method indicates the desired level of security.
 - Secure—Secure Socket Layer (SSL) connection requires the Distinguished Encoding Rules (DER) Certificate for the scheduling API server. You must complete the Certificate field on this window before you can proceed.
 - Normal—The CTS-Manager communicates with the scheduling API server in cleartext using HTTP.
- **Port**
The default value is 80. You can use 80 or 8080.
- **Logon Name**
The username provides login access to the calendar server.
- **Password**
The user password allows access to the calendar server.
- **Certificate**
A certificate is a digital representation of user or device attributes, including a public key, that is signed with an authoritative private key. In a self-signature, the signature can be verified using the public key contained in the certificate.
- **Verify**
Validates Logon Name and Password against the LDAP server.



Note

Click the **Browse...** button to choose the Scheduling API server SSL certificate. If you selected Secure bind method, this value is required.

Configure Database Backup Schedule

The Database Backup Schedule window allows you to set the database backup schedule. This schedule must be set in order to complete the initialization process.

To configure the database backup schedule:

- Step 1** Fill in the Database Backup Schedule fields.
For information about these fields, see [Explanation of Database Backup Schedule Fields, page 10-20](#).
- Step 2** If you are setting up a remote backup, click **Verify Remote Host** to verify the login information.
For additional information about Database Backup, refer to [Database - Status, Backup, and Restore, page 11-48](#) in [Chapter 11, “Additional Installation Configurations for Cisco TelePresence Manager.”](#)



Note

The default is set to a daily backup schedule with the backup information stored to the local drive. Cisco recommends that you back up your data to a different drive.

Step 3 Click **Finish**.

The Cisco TelePresence Manager Status Dashboard window appears. Go to [Dashboard for Verification of Installation Status](#), page 10-21.

Figure 10-13 Database Backup Schedule Window

Explanation of Database Backup Schedule Fields

The Cisco Unified Communications Manager uses an Informix Database server to store information. This window allows the administrator to set up regular backup operations of the database.



Note

Cisco strongly recommends scheduling regular backups of the database.

The Database Backup Schedule window contains the following fields:

- **Schedule**

Click **Change...** to set the backup schedule. The following choices are available:

- **Start Time (UTC)**

Enter the hour and minute, in UTC 24-hour format, for when you want your backup to begin. UTC is the atomic clock version of Universal Time (UT), formerly known as Greenwich Mean Time. Time zones around the world are expressed as positive and negative offsets from UT. For example, Midnight Pacific Standard Time (+8 UT) is 08:00 UT.

- **Frequency**

Choose **Daily** or **Weekly** database backups. If you choose Weekly, select the radio button beside the day of the week on which you want your backup to occur.

- **Number of backup files to keep**

From the drop-down menu, choose the number of backup files to keep before deleting. Choices range from 1 to 14 (two week's worth of daily backups). The default is 14.

- **Backup Type**

Choose Local or Remote to designate the server for backups. If you select Local, the backup files are stored on your local server.

If you choose Remote, you must fill in the following values for the remote server:

- **Remote Storage Host (SFTP)**

The network path to the remote Secure File Transfer Protocol (SFTP) storage host.

- **Port**

Port number designated for the backup process. The default is port 22.

- **User Name**

Username for login to the remote server.

- **User Password**

Password for login to the remote server.

- **Storage Path**

The file path to the location where you want to store the backup data.

Dashboard for Verification of Installation Status

The Status Dashboard window appears after initialization is complete, allowing you to verify installation and to check the status of the system services. In the future, you can come to this window to see a snapshot of meetings that are scheduled for the day. Click highlighted links in this window for quick access to other windows that provide meeting and room(endpoint)-scheduling functions.

[Figure 10-15](#) describes the dashboard report information. To update the reports, click **Refresh**.

For additional configurations and an introduction to the CTS-Manager administration software, go to [Chapter 11, “Additional Installation Configurations for Cisco TelePresence Manager”](#).

Figure 10-14 Cisco TelePresence Manager Monitor > Status Dashboard Window



Figure 10-15 **Status Dashboard Report**

Field	Description or Setting
Today's Meetings	<p>Status of current and upcoming meetings:</p> <ul style="list-style-type: none"> • With Error—Displays the number of meetings that have errors. • All Meetings—All meetings scheduled for today. <p>Click the link associated with each meeting or device's information to go to the Meetings window.</p>
Devices	<p>Status information for the following devices:</p> <ul style="list-style-type: none"> • Bridges and Servers—Clicking the link displays the summary information in the Support > Bridges and Servers window and filters the list to those bridges and servers with an error status. • Application Servers—Clicking the link displays the summary information in the Cluster Management > Application Servers window. (Only appears if CTS-Manager is part of a cluster). <p>Clustering Support Discontinued</p> <p>Cisco no longer provides support for the clustering feature originally introduced in release 1.8. For questions, contact Ron Lewis: ronlewis@cisco.com.</p> <ul style="list-style-type: none"> • Database Servers—Clicking the link displays the summary information in the Cluster Management > Database Servers window. (Only appears if CTS-Manager is part of a cluster). <p>Clustering Support Discontinued</p> <p>Cisco no longer provides support for the clustering feature originally introduced in release 1.8. For questions, contact Ron Lewis: ronlewis@cisco.com.</p> <ul style="list-style-type: none"> • TelePresence Endpoints—Clicking the link displays the status information in the Support > Endpoints window. • VC Endpoints—Clicking the link displays the status information for VC endpoints in the Support > Endpoints window. • Unified CM—Clicking the link displays the information in the Support > Unified CM window. <p>Note An error may occur if the connection to Unified CM was caused by</p>
Indicators	<p>Status Indicators for:</p> <ul style="list-style-type: none"> • Database Backup • Current Database Size • Mailbox is • Endpoint Mailbox Sync
Time	<p>Status of the following times:</p> <ul style="list-style-type: none"> • System Time—Day, date, and time in coordinated universal time (UTC, formerly known as Greenwich mean time or GMT). • My Time—Local day, date, and time for logged-in user.

Field	Description or Setting
Services	<p>Status information for the following system services:</p> <ul style="list-style-type: none">• Calendar Service• WebEx (if enabled)• LDAP Server• Endpoint Control• Database• Multipoint Conference• Unified CM <p>Status is either OK or is a highlighted link listing the number of errors. You can click a link to see further system log status information and troubleshoot problems. You can also roll your mouse over a highlighted link to see a brief description of the error.</p>
Uptime	<p>Status information about the elapsed running time since the last restart.</p> <ul style="list-style-type: none">• Services—Services displayed in the Services section.• TelePresence Engine—Cisco TelePresence database engine.• System Platform—Hardware host for CTS-Manager.