



CHAPTER 7

Report Tasks

These topics describe the Report tasks for Element Manager:

- [Viewing Port Statistics, page 7-1](#)
- [Graphing Port Statistics, page 7-7](#)
- [Viewing Card Statistics, page 7-10](#)
- [Graphing Card Statistics, page 7-13](#)



Note

Use the Report menu to view card and port statistics. With the menu, you can view all relevant statistics in a table, or you can choose statistics to create a custom graph.

Viewing Port Statistics

These topics describe how to view port statistics:

- [Viewing General Port Statistics, page 7-1](#)
- [Configuring the Refresh Rate, page 7-3](#)
- [Viewing Fibre Channel Statistics, page 7-3](#)
- [Viewing IP Statistics, page 7-4](#)
- [Viewing Ethernet Statistics, page 7-5](#)

Viewing General Port Statistics

To view port statistics, follow these steps:

- Step 1** In the chassis display, click the port with statistics you want to view.
- Step 2** From the Report menu, choose **Graph Port**.
A window opens that displays the type and number of the port.
- Step 3** Click the **Interface** tab.

A table of port statistics appears. [Table 7-1](#) describes the fields in this table.

Table 7-1 *Port Statistics Display Field Descriptions*

Field	Description
InOctets	Cumulative number of octets that arrived at the port, including framing characters.
InUcastPkts	Cumulative number of incoming packets destined for a single port.
InMulticastPkts	Cumulative number of incoming packets destined for the ports of a multicast group.
InBroadcastPkts	Cumulative number of incoming packets destined for all ports on the fabric.
InDiscards	Cumulative number of inbound packets that the port discarded for a reason other than a packet error (such as the lack of buffer space).
InErrors	Number of inbound packets with errors that the port discarded.
InUnknownProtos	For packet-oriented interfaces, the number of packets received through the interface that were discarded because of an unknown or unsupported protocol. For character-oriented or fixed-length interfaces that support protocol multiplexing, the number of transmission units received through the interface that were discarded because of an unknown or unsupported protocol. For any interface that does not support protocol multiplexing, this counter is always 0.
OutOctets	Total number of octets transmitted out of the interface including framing characters.
OutUcastPkts	Total number of packets that higher-level protocols requested be transmitted and which were not addressed to a multicast or broadcast address at this sublayer, including those packets that were discarded or not sent.
OutMulticastPkts	Total number of packets that higher-level protocols requested be transmitted, and which were addressed to a multicast address at this sublayer, including those packets that were discarded or not sent. For a MAC layer protocol, includes both Group and Functional addresses.
OutBroadcastPkts	Total number of packets that higher-level protocols requested to be transmitted and that were addressed to a broadcast address at this sublayer, including those packets that were discarded or not sent.
OutDiscards	Number of outbound packets that were chosen to be discarded even though no errors had been detected to prevent their being transmitted. One possible reason for discarding such a packet could be to free-up buffer space.
OutErrors	For packet-oriented interfaces, the number of outbound packets that could not be transmitted because of errors. For character-oriented or fixed-length interfaces, the number of outbound transmission units that could not be transmitted because of errors.

Configuring the Refresh Rate

Element Manager refreshes all statistics displays at regular intervals. To configure the refresh rate, follow these steps:

- Step 1** In the chassis display, click the port with the refresh rate you want to change.
- Step 2** From the **Report** menu, choose **Graph Port**.
A window opens that displays the type and number of the port.
- Step 3** Click the drop-down menu at the bottom of the window, and choose the interval at which you want the display to refresh.



Note You do not need to click **Apply** or **OK**. The change takes place immediately.

Viewing Fibre Channel Statistics

In addition to general statistics, the Report menu provides Fibre Channel-specific statistics for Fibre Channel gateway ports. To view Fibre Channel statistics, follow these steps:

- Step 1** In the chassis display, click the Fibre Channel gateway port with statistics that you want to view.
- Step 2** From the Report menu, choose **Graph Port**.
A window opens that displays the type and number of the port.
- Step 3** Click the **Fibre Channel** tab.
A table of Fibre Channel statistics appears. [Table 7-2](#) describes the fields in this table.

Table 7-2 *Fibre Channel Statistics Field Descriptions*

Field	Description
FcSecondsSinceLastReset	Number of seconds since the Fibre Channel port last reset.
LinkEvents	Total number of link events (such as link up, link down) processed by the Fibre Channel interface gateway(s).
FcpCmdsOutstanding	Total number of Fibre Channel protocol commands outstanding on the Fibre Channel interface gateway(s).
FcpCmdsCompleted	Total number of Fibre Channel protocol commands completed on the Fibre Channel interface gateway(s).
FcpErrors	Total number of Fibre Channel protocol errors encountered on the Fibre Channel interface gateway(s).
FcInitiatorIO	Quantity of Initiator I/O.
FcTxFrames	Number of transmitted Fibre Channel frames.
FcTxWords	Number of transmitted Fibre Channel words.
FcRxFrames	Number of received Fibre Channel frames.

Table 7-2 *Fibre Channel Statistics Field Descriptions (continued)*

Field	Description
FcRxWords	Number of received Fibre Channel words.
FcLIPCount	Number of Loop Initialization Primitives.
FcNOSCount	Number of not operational primitive sequences.
FcErrorFrames	Number of error frames.
FcDumpedFrames	Number of frames that the port dumped.
FcLinkFailureCount	Number of link failures.
FcLossOfSyncCount	Number of loss-of-sync errors.
FcLossOfSignalCount	Number of loss-of-signal errors.
FcPrimitiveSeqProtocolErrCount	Number of primitive sequence protocol errors.
FcInvalidTxWordCount	Number of invalid transmission word errors.
FcInvalidCRCCCount	Number of invalid cyclical redundancy checks.

Viewing IP Statistics

In addition to general statistics, the Report menu provides IP-specific statistics for Ethernet gateway ports. To view IP statistics, follow these steps:

- Step 1** In the chassis display, click the Ethernet gateway port with IP statistics that you want to view.
- Step 2** From the Report menu, choose **Graph Port**.
A window opens that displays the type and number of the port.
- Step 3** Click the **IP** tab.
A table of IP statistics appears. [Table 7-3](#) describes the fields in this table.

Table 7-3 *IP Statistics Field Descriptions*

Field	Description
InReceives	Cumulative number of input datagrams (including errors) that interfaces received for the IP address that you specified with the ip keyword.
InHdrErrors	Cumulative number of datagrams that interfaces discarded. Reasons to discard a datagram include the following: <ul style="list-style-type: none"> • Bad checksums • Version number mismatches • Format errors • Exceeded time-to-live values • IP option processing errors
InHdrChksumErr	The number of input datagrams discarded due to a checksum error in their IP headers.

Table 7-3 *IP Statistics Field Descriptions (continued)*

Field	Description
InAddrErrors	Cumulative number of input datagrams that ports discarded because the IP address in the destination field of the header of the datagram was not a valid address to be received by the port.
ForwDatagrams	Cumulative number of datagrams that arrived at the port enroute to a final destination. For non-IP-gateway ports, this value includes only packets that the port source-routed successfully.
InUnknownProtos	Cumulative number of datagrams that the port successfully received but discarded due to an unknown or unsupported protocol.
InDiscards	Cumulative number of datagrams that the port discarded for a reason other than a problem with the datagram (such as the lack of buffer space).
InDelivers	Cumulative number of input datagrams that the port successfully delivered to IP user protocols, including the Internet Control Message Protocol (ICMP).
OutRequests	Cumulative number of IP datagrams that local IP user protocols (including ICMP) supplied to IP in-requests. This counter does not include any datagrams counted as forw-datagrams.
OutDiscards	Cumulative number of output IP datagrams that the port discarded for a reason other than a problem with the datagram (such as the lack of buffer space).
OutNoRoutes	Cumulative number of IP datagrams that the port discarded because a route could not be found to transmit them to their destination. This counter includes any packets counted in forw-datagrams that still qualify. This counter also includes any datagrams that a server switch cannot route because all of the gateways on the server switch are down.
FragOKs	Cumulative number of IP datagrams that the port has successfully fragmented.
FragFails	Cumulative number of IP datagrams that the port discarded because the port could not fragment them. (For instance, this situation occurs when the Don't Fragment flag of the datagram is set.)
FragCreates	Cumulative number of IP datagram fragments that the port has generated.

Viewing Ethernet Statistics

In addition to general statistics, the Report menu provides IP-specific statistics for Ethernet gateway ports. To view Ethernet statistics, follow these steps:

- Step 1** In the chassis display, click the Ethernet gateway port with Ethernet statistics that you want to view.
- Step 2** From the Report menu, choose **Graph Port**.
A window opens that displays the type and number of the port.
- Step 3** Click the **Ethernet** tab.

A table of Ethernet statistics appears. [Table 7-4](#) describes the fields in this table.

Table 7-4 Ethernet Statistics Field Descriptions

Field	Description
SingleCollisionFrames	Count of successfully transmitted frames on a particular interface for which transmission is inhibited by exactly one collision. A frame that is counted by an instance of this object is also counted by the corresponding instance of the out-ucast-pkts, out-multicast-pkts, or out-broadcast-pkts, and is not counted by the corresponding instance of the multiple-collision-frames object. This counter does not increment when the interface is operating in full-duplex mode.
MultipleCollisionFrames	Count of successfully transmitted frames on a particular interface for which transmission is inhibited by more than one collision. A frame that is counted by an instance of this object is also counted by the corresponding instance of the out-ucast-pkts, out-multicast-pkts, or out-broadcast-pkts, and is not counted by the corresponding instance of the single-collision-frames object. This counter does not increment when the interface is operating in full-duplex mode.
AlignmentErrors	Count of frames received on a particular interface that are not an integral number of octets in length and do not pass the FCS check. The count represented by an instance of this object is incremented when the alignmentError status is returned by the MAC service to the Logical Link Control (LLC) or other MAC user. Received frames for which multiple obtained error conditions are counted exclusively according to the error status presented to the LLC. This counter does not increment for 8-bit wide group encoding schemes.
FCSErrors	Count of frames received on a particular interface that are an integral number of octets in length but do not pass the FCS check. This count does not include frames received with frame-too-long or frame-too-short errors. The count is incremented when the frameCheckError status is returned by the MAC service to the LLC (or other MAC user). Received frames for which multiple error conditions obtained are counted exclusively according to the error status presented to the LLC. Coding errors detected by the physical layer for speeds above 10 Mbps will cause the frame to fail the FCS check.
SQETestErrors	Count of times that the SQE TEST ERROR message is generated by the PLS sub layer for a particular interface. The SQE TEST ERROR is set in accordance with the rules for verification of the SQE detection mechanism in the PLS Carrier Sense Function, as described in IEEE 802.3, 1998 Edition, section 7.2.4.6. This counter does not increment on interfaces operating at speeds greater than 10 Mbps or on interfaces operating in full-duplex mode.
DeferredTransmissions	Count of frames for which the first transmission attempt on a particular interface is delayed because the medium is busy. The count represented by an instance of this object does not include frames involved in collisions. This counter does not increment when the interface is operating in full-duplex mode.

Table 7-4 Ethernet Statistics Field Descriptions (continued)

Field	Description
LateCollisions	Number of times that a collision is detected on an interface later than one Ethernet slot-time unit into transmission of a packet. A late collision included in this count is also considered to be a generic collision for purposes of other collision-related statistics. This counter does not increment when the interface is operating in full-duplex mode.
ExcessiveCollisions	Count of frames for which transmission on an interface fails due to excessive collisions. This counter does not increment when the interface is operating in full-duplex mode.
InternalMacTransmitErrors	Count of frames for which transmission on an interface fails due to an internal MAC sub layer transmit error. A frame is counted only if it is not counted by the corresponding instance of the late-collisions object, the excessive-collisions object, or the carrier-sense-errors object. The precise meaning of this count is implementation-specific. This object may represent a count of transmission errors on a particular interface that is not otherwise counted.
CarrierSenseErrors	Number of times that the carrier sense condition was lost or never asserted when attempting to transmit a frame on an interface. This count is incremented, at most, once per transmission attempt, even if the carrier sense condition fluctuates during a transmission attempt. This counter does not increment when the interface is operating in full-duplex mode.
FrameTooLongs	Count of frames received on an interface that exceed the maximum permitted frame size. The count is incremented when the frame-too-long status is returned by the MAC service to the LLC (or other MAC user). Received frames for which multiple error conditions obtained are counted exclusively according to the error status presented to the LLC.
InternalMacReceiveErrors	Count of frames for which reception on an interface fails due to an internal MAC sub layer receive error. A frame is counted only if it is not counted by the corresponding instance of the frame-too-long, alignment-errors, or fcs-errors object. The precise meaning of this count is implementation-specific. An instance of this object may represent a count of receive errors on a particular interface that is not otherwise counted.

Graphing Port Statistics

Element Manager provides utilities that create line charts, area charts, bar charts, and pie charts to visually represent port statistics.

To graph particular port statistics, follow these steps:

-
- Step 1** In the chassis display, click the port with statistics that you want to view.
- Step 2** From the Report menu, choose **Graph Port**.
- A window opens that displays the type and number of the port.

- Step 3** Click the **Interface** tab. (Optionally, you can click the **IP**, **Ethernet**, or **Fibre Channel** tabs, when available.)

A table of port statistics appears, as shown in [Figure 7-1](#).

Figure 7-1 Ethernet Port Statistics

	AbsoluteValue	Cumulative	Average	Minimum	Maximum	LastValue
InOctets	0	0	0	0	0	0
InUcastPkts	0	0	0	0	0	0
InMulticastPkts	0	0	0	0	0	0
InBroadcastPkts	0	0	0	0	0	0
InDiscards	0	0	0	0	0	0
InErrors	0	0	0	0	0	0
InUnknownProtos	0	0	0	0	0	0
OutOctets	0	0	0	0	0	0
OutUcastPkts	0	0	0	0	0	0
OutMulticastPkts	0	0	0	0	0	0
OutBroadcastPkts	0	0	0	0	0	0
OutDiscards	0	0	0	0	0	0
OutErrors	0	0	0	0	0	0

- Step 4** Select the values to include in the graph using one of the following methods:

- Click-and-drag your cursor across the values that you want to graph.
- Press the **Ctrl** key, and click the values that you want to graph.

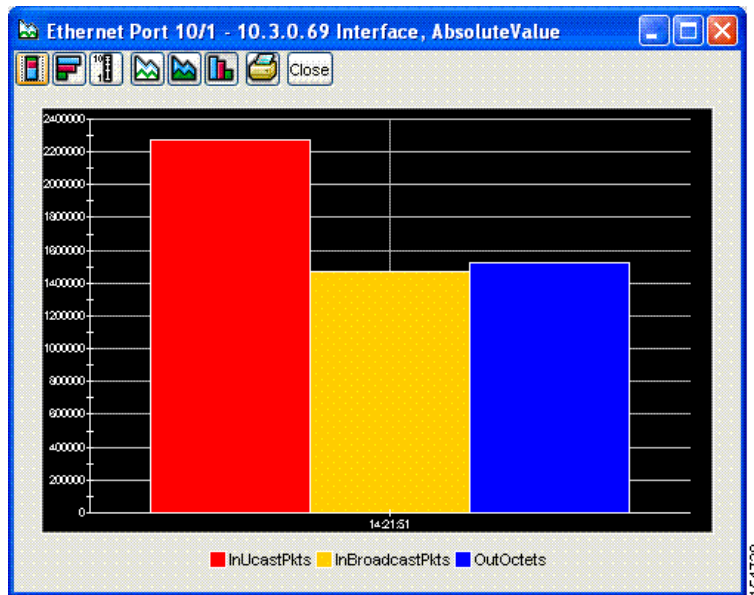
- Step 5** Click the icon (see [Figure 7-2](#)) of the graph type that you want to create.

Figure 7-2 Graphing Icons

	Line Chart
	Area Chart
	Bar Chart
	Pie Chart

The graph appears. [Figure 7-3](#) shows a bar chart example.

Figure 7-3 Bar Chart



Note

With most charts, the display will reload with updated information based on the refresh rate. To configure the interval, see the [“Configuring the Refresh Rate”](#) section on page 7-3.

Using a Swap Chart Type, Layout, and Scale

With the exception of pie charts, the chart display lets you follow these steps:




- Swap between charts.
- Increase or decrease the scale of the display.
- View the chart horizontally or vertically.

[Table 7-5](#) describes the icons used to perform these functions.

Table 7-5 Chart Icons

Icon	Function
	The Stacked icon overlays the graphical output of each statistic.
	The Horizontal icon rotates the axis of the graph by 90 degrees.
	The Log Scale icon zooms in and out.

Table 7-5 **Chart Icons (continued)**

Icon	Function
	The Line Chart icon displays a line chart.
	The Area Chart icon displays an area chart.
	The Bar Chart icon displays a bar chart.

Viewing Card Statistics

These topics describe how to use Element Manager to view statistics of Fibre Channel gateway cards or Ethernet gateway cards:

- [Viewing Fibre Channel Card Statistics, page 7-10](#)
- [Viewing Ethernet Card Statistics, page 7-11](#)
- [Configuring the Refresh Rate, page 7-12](#)

Viewing Fibre Channel Card Statistics

To view Fibre Channel statistics, follow these steps:

Step 1 In the chassis display, click the card with statistics you want to view.

Step 2 From the Report menu, choose **Graph Card**.

A window opens that displays the type and number of the card and presents card statistics in tabular format. [Table 7-6](#) describes the fields in this table.

Table 7-6 **Fibre Channel Card Statistics**

Field	Description
LinkEvents	Total number of link events (such as the link up, link down) processed by the Fibre Channel interface gateway(s).
SrpInitiatedIos	Total number of scrip file initiated I/O requests.
SrpCmdsCompleted	Cumulative number of commands that one or all Fibre Channel gateways executed.
SrpBytesRead	Cumulative number of script file bytes read by one or all Fibre Channel gateways.
SrpBytesWritten	Cumulative number of script file bytes written by one or all Fibre Channel gateways.
SrpConnections	Total number of connections used by the script file initiator.
SrpCmdsOutstanding	Cumulative number of outstanding script file commands.
SrpErrors	Cumulative number of script file errors.

Table 7-6 *Fibre Channel Card Statistics (continued)*

Field	Description
FcInitiatedIos	Total number of I/O responses by the Fibre Channel device to script file initiator requests.
FcpCmdsCompleted	Cumulative number of commands that one or all Fibre Channel gateways executed.
FcpBytesRead	Cumulative number of Fibre Channel bytes read by one or all Fibre Channel gateways.
FcpBytesWritten	Cumulative number of Fibre Channel bytes written by one or all Fibre Channel gateways.
FcpCmdsOutstanding	Cumulative number of outstanding Fibre Channel commands.
FcpErrors	Cumulative number of Fibre Channel errors on one or all gateways.

Viewing Ethernet Card Statistics

To view Ethernet card statistics, follow these steps:

Step 1 In the chassis display, click the card with statistics that you want to view.

Step 2 From the Report menu, choose **Graph Card**.

A window opens that displays the type and number of the card and presents card statistics in tabular format. [Table 7-7](#) describes the fields in this table.

Table 7-7 *Ethernet Card Statistics*

Field	Description
InReceives	Cumulative number of input datagrams (including errors) that interfaces received for the IP address that you specified with the ip keyword.
InHdrErrors	Cumulative number of datagrams that interfaces discarded. Reasons to discard a datagram include the following: <ul style="list-style-type: none"> • Bad checksums • Version number mismatches • Format errors • Exceeded time-to-live values • IP option processing errors
InHdrChksumErr	Cumulative number of header checksum errors.
InAddrErrors	Cumulative number of input datagrams that ports discarded because the IP address in the destination field of the header of the datagram was not a valid address to be received by the port.
ForwDatagrams	Cumulative number of datagrams that arrived at the port enroute to a final destination. For non-IP-gateway ports, this value includes only packets that the port source-routed successfully.

Table 7-7 Ethernet Card Statistics (continued)

Field	Description
InUnknownProtos	Cumulative number of datagrams that the port successfully received but discarded due to an unknown or unsupported protocol.
InDiscards	Cumulative number of datagrams that the port discarded for a reason other than a problem with the datagram (such as the lack of buffer space).
InDelivers	Cumulative number of input datagrams that the port successfully delivered to IP user protocols, including Internet Control Message Protocol (ICMP).
OutRequests	Cumulative number of IP datagrams that local IP user protocols (including ICMP) supplied to IP in-requests. This counter does not include any datagrams counted as forw-datagrams.
OutDiscards	Cumulative number of output IP datagrams that the port discarded for a reason other than a problem with the datagram (such as the lack of buffer space).
OutNoRoutes	Cumulative number of IP datagrams that the port discarded because a route could not be found to transmit them to their destination. This counter includes any packets counted in forw-datagrams that still qualify. This counter also includes any datagrams that a server switch cannot route because all of the gateways on the server switch are down.
FragOKs	Cumulative number of IP datagrams that the port has successfully fragmented.
FragFails	Cumulative number of IP datagrams that the port discarded because the port could not fragment them. (For instance, this situation occurs when the Don't Fragment flag of the datagram is set.)
FragCreates	Cumulative number of IP datagram fragments that the port has generated.

Configuring the Refresh Rate

Element Manager refreshes all statistics displays at regular intervals. To configure the refresh rate interval, follow these steps:

- Step 1** In the chassis display, click the port with the refresh rate that you want to change.
- Step 2** From the Report menu, choose **Graph Card**.
A window opens that displays the type and number of the port.
- Step 3** Click the drop-down menu at the bottom of the window and choose the interval at which you want the display to refresh.



Note You do not need to click **Apply** or **OK**. The change takes place immediately.

Graphing Card Statistics

Element Manager provides utilities that create line charts, area charts, bar charts, and pie charts to visually represent port statistics.

To graph particular card statistics, follow these steps:

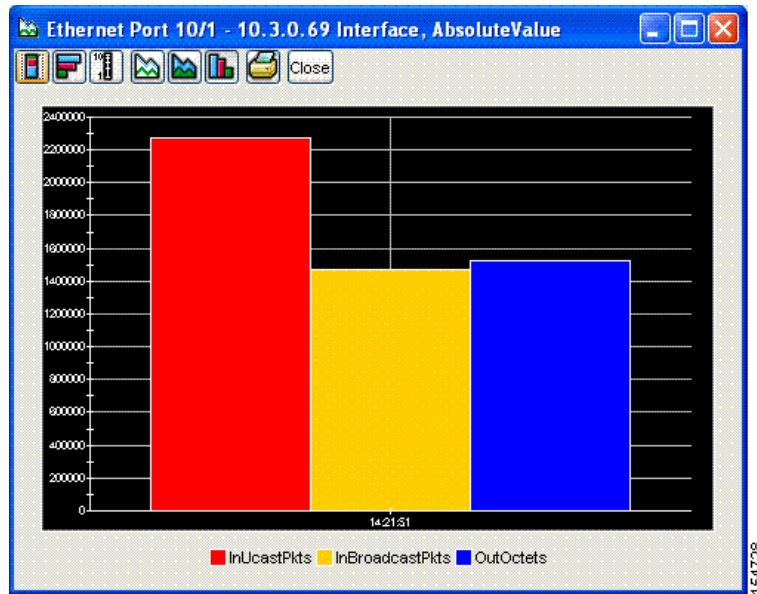
-
- Step 1** In the chassis display, click the card with statistics that you want to view.
- Step 2** From the Report menu, choose **Graph Card**.
- A window opens that displays the type and number of the port. A table of card statistics appears.
- Step 3** Select the values that you want to include in the graph with one of the following methods:
- Click-and-drag your cursor across the values that you want to graph.
 - Press the **Ctrl** key, and click the values that you want to graph.
- Step 4** Click the icon of the graph that you want to create. See [Figure 7-4](#).

Figure 7-4 **Graphing Icons**

	Line Chart
	Area Chart
	Bar Chart
	Pie Chart

The graph appears. See [Figure 7-5](#) for an example.

Figure 7-5 Bar Graph Example



Note

With most charts, the display reloads with updated information based on the refresh rate. To configure the interval, see the [“Configuring the Refresh Rate”](#) section on page 7-12.

Using the Swap Chart Type, Layout, and Scale

With the exception of pie charts, the chart display lets you do the following:

- Swap between charts.
- Increase or decrease the scale of the display.
- View the chart horizontally or vertically.

To do these tasks, use the icons shown in [Table 7-8](#).

Table 7-8 Charting Icons







Icon	Function
	The Stacked icon overlays the graphical output of each statistic.
	The Horizontal icon rotates the axis of the graph by ninety degrees.

Table 7-8 **Charting Icons (continued)**

Icon	Function
	The Log Scale icon zooms in and out.
	The Line Chart icon displays a line chart.
	The Area Chart icon displays an area chart.
	The Bar Chart icon displays a bar chart.

