



# Starting Interface Configuration (ASA 5510 and Higher)

This chapter includes tasks for starting your interface configuration for the ASA 5510 and higher, including configuring Ethernet settings, redundant interfaces, and EtherChannels.



## Note

This chapter only applies to the ASA 5500 series appliances; for the ASASM, starting interface configuration consists of configuring switch ports and VLANs on the switch, and then assigning VLANs to the ASASM according to [Chapter 2, “Configuring the Switch for Use with the ASA Services Module.”](#) To complete your interface configuration, see [Chapter 17, “Completing Interface Configuration \(Routed Mode\),”](#) or [Chapter 18, “Completing Interface Configuration \(Transparent Mode, 8.4 and Later\).”](#)

For ASA 5505 configuration, see [Chapter 11, “Starting Interface Configuration \(ASA 5505\).”](#)

For multiple context mode, complete all tasks in this section in the system execution space. If you are not already in the system execution space, in the Configuration > Device List pane, double-click **System** under the active device IP address.

For ASA cluster interfaces, which have special requirements, see [Chapter 6, “Configuring a Cluster of ASAs.”](#)

This chapter includes the following sections:

- [Information About Starting ASA 5510 and Higher Interface Configuration, page 10-2](#)
- [Licensing Requirements for ASA 5510 and Higher Interfaces, page 10-8](#)
- [Guidelines and Limitations, page 10-10](#)
- [Default Settings, page 10-12](#)
- [Starting Interface Configuration \(ASA 5510 and Higher\), page 10-12](#)
- [Monitoring Interfaces, page 10-37](#)
- [Where to Go Next, page 10-41](#)
- [Feature History for ASA 5510 and Higher Interfaces, page 10-41](#)

# Information About Starting ASA 5510 and Higher Interface Configuration

This section includes the following topics:

- [Auto-MDI/MDIX Feature, page 10-2](#)
- [Interfaces in Transparent Mode, page 10-2](#)
- [Management Interface, page 10-2](#)
- [Redundant Interfaces, page 10-5](#)
- [EtherChannels, page 10-5](#)

## Auto-MDI/MDIX Feature

For RJ-45 interfaces on the ASA 5500 series, the default auto-negotiation setting also includes the Auto-MDI/MDIX feature. Auto-MDI/MDIX eliminates the need for crossover cabling by performing an internal crossover when a straight cable is detected during the auto-negotiation phase. Either the speed or duplex must be set to auto-negotiate to enable Auto-MDI/MDIX for the interface. If you explicitly set both the speed and duplex to a fixed value, thus disabling auto-negotiation for both settings, then Auto-MDI/MDIX is also disabled. For Gigabit Ethernet, when the speed and duplex are set to 1000 and full, then the interface always auto-negotiates; therefore Auto-MDI/MDIX is always enabled and you cannot disable it.

## Interfaces in Transparent Mode

Interfaces in transparent mode belong to a “bridge group,” one bridge group for each network. You can have up to eight bridge groups of four interfaces each per context or in single mode. For more information about bridge groups, see the “[Bridge Groups in Transparent Mode](#)” section on page 18-2.

## Management Interface

- [Management Interface Overview, page 10-2](#)
- [Management Slot/Port Interface, page 10-3](#)
- [Using Any Interface for Management-Only Traffic, page 10-3](#)
- [Management Interface for Transparent Mode, page 10-4](#)
- [No Support for Redundant Management Interfaces, page 10-4](#)
- [Management 0/0 Interface on the ASA 5512-X through ASA 5555-X, page 10-4](#)

## Management Interface Overview

You can manage the ASA by connecting to:

- Any through-traffic interface
- A dedicated Management *Slot/Port* interface (if available for your model)

You may need to configure management access to the interface according to [Chapter 42, “Configuring Management Access.”](#)

## Management *Slot/Port* Interface

[Table 10-1](#) shows the Management interfaces per model.-

**Table 10-1 Management Interfaces Per Model**

| Model      | Configurable for Through Traffic <sup>1</sup> | Management 0/0 <sup>2</sup> | Management 0/1 | Management 1/0   | Management 1/1   |
|------------|---|-----------------------------|----------------|------------------|------------------|
| ASA 5505   | N/A   | No                          | No             | No               | No               |
| ASA 5510   | Yes   | Yes                         | No             | No               | No               |
| ASA 5520   | Yes   | Yes                         | No             | No               | No               |
| ASA 5540   | Yes   | Yes                         | No             | No               | No               |
| ASA 5550   | Yes   | Yes                         | No             | No               | No               |
| ASA 5580   | Yes   | Yes                         | Yes            | No               | No               |
| ASA 5512-X | No  | Yes                         | No             | No               | No               |
| ASA 5515-X | No  | Yes                         | No             | No               | No               |
| ASA 5525-X | No  | Yes                         | No             | No               | No               |
| ASA 5545-X | No  | Yes                         | No             | No               | No               |
| ASA 5555-X | No  | Yes                         | No             | No               | No               |
| ASA 5585-X | Yes   | Yes                         | Yes            | Yes <sup>3</sup> | Yes <sup>3</sup> |
| ASASM      | N/A   | No                          | No             | No               | No               |

1. By default, the Management 0/0 interface is configured for management-only traffic. For supported models in routed mode, you can remove the limitation and pass through traffic. If your model includes additional Management interfaces, you can use them for through traffic as well. The Management interfaces might not be optimized for through-traffic, however.
2. The Management 0/0 interface is configured for ASDM access as part of the default factory configuration. See the [“Factory Default Configurations” section on page 2-18](#) for more information.
3. If you installed an SSP in slot 1, then Management 1/0 and 1/1 provide management access to the SSP in slot 1 only.



### Note

If you installed an IPS module, then the IPS module management interface(s) provides management access for the IPS module only. For the ASA 5512-X through ASA 5555-X, the IPS SSP software module uses the same physical Management 0/0 interface as the ASA.

## Using Any Interface for Management-Only Traffic

You can use any interface as a dedicated management-only interface by configuring it for management traffic, including an EtherChannel interface.

## Management Interface for Transparent Mode

In transparent firewall mode, in addition to the maximum allowed through-traffic interfaces, you can also use the Management interface (either the physical interface, a subinterface (if supported for your model), or an EtherChannel interface comprised of Management interfaces (if you have multiple Management interfaces)) as a separate management interface. You cannot use any other interface types as management interfaces.

If your model does not include a Management interface, you must manage the transparent firewall from a data interface.

In multiple context mode, you cannot share any interfaces, including the Management interface, across contexts. To provide management per context, you can create subinterfaces of the Management interface and allocate a Management subinterface to each context. Note that the ASA 5512-X through ASA 5555-X do not allow subinterfaces on the Management interface, so for per-context management, you must connect to a data interface.

For 8.4(1) and later, the management interface is not part of a normal bridge group. Note that for operational purposes, it is part of a non-configurable bridge group.



### Note

In transparent firewall mode, the management interface updates the MAC address table in the same manner as a data interface; therefore you should not connect both a management and a data interface to the same switch unless you configure one of the switch ports as a routed port (by default Cisco Catalyst switches share a MAC address for all VLAN switch ports). Otherwise, if traffic arrives on the management interface from the physically-connected switch, then the ASA updates the MAC address table to use the *management* interface to access the switch, instead of the data interface. This action causes a temporary traffic interruption; the ASA will not re-update the MAC address table for packets from the switch to the data interface for at least 30 seconds for security reasons.

## No Support for Redundant Management Interfaces

Redundant interfaces do not support Management *slot/port* interfaces as members. You also cannot set a redundant interface comprised of non-Management interfaces as management-only.

## Management 0/0 Interface on the ASA 5512-X through ASA 5555-X

The Management 0/0 interface on the ASA 5512-X through ASA 5555-X has the following characteristics:

- No through traffic support
- No subinterface support
- No priority queue support
- No multicast MAC support
- The IPS SSP software module shares the Management 0/0 interface. Separate MAC addresses and IP addresses are supported for the ASA and IPS module. You must perform configuration of the IPS IP address within the IPS operating system. However, physical characteristics (such as enabling the interface) are configured on the ASA.

## Redundant Interfaces

A logical redundant interface consists of a pair of physical interfaces: an active and a standby interface. When the active interface fails, the standby interface becomes active and starts passing traffic. You can configure a redundant interface to increase the ASA reliability. This feature is separate from device-level failover, but you can configure redundant interfaces as well as device-level failover if desired.

### Redundant Interface MAC Address

The redundant interface uses the MAC address of the first physical interface that you add. If you change the order of the member interfaces in the configuration, then the MAC address changes to match the MAC address of the interface that is now listed first. Alternatively, you can assign a MAC address to the redundant interface, which is used regardless of the member interface MAC addresses (see the [“Configuring the MAC Address and MTU”](#) section on page 17-13 or the [“Configuring Multiple Contexts”](#) section on page 5-15). When the active interface fails over to the standby, the same MAC address is maintained so that traffic is not disrupted.

## EtherChannels

An 802.3ad EtherChannel is a logical interface (called a port-channel interface) consisting of a bundle of individual Ethernet links (a channel group) so that you increase the bandwidth for a single network. A port channel interface is used in the same way as a physical interface when you configure interface-related features.

You can configure up to 48 EtherChannels.

This section includes the following topics:

- [Channel Group Interfaces, page 10-5](#)
- [Connecting to an EtherChannel on Another Device, page 10-5](#)
- [Link Aggregation Control Protocol, page 10-6](#)
- [Load Balancing, page 10-7](#)
- [EtherChannel MAC Address, page 10-8](#)

### Channel Group Interfaces

Each channel group can have eight active interfaces. Note that you can assign up to 16 interfaces to a channel group. While only eight interfaces can be active, the remaining interfaces can act as standby links in case of interface failure.

All interfaces in the channel group must be the same type and speed. The first interface added to the channel group determines the correct type and speed.

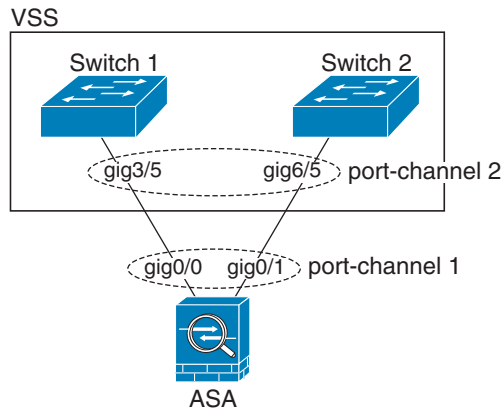
The EtherChannel aggregates the traffic across all the available active interfaces in the channel. The port is selected using a proprietary hash algorithm, based on source or destination MAC addresses, IP addresses, TCP and UDP port numbers and vlan numbers.

### Connecting to an EtherChannel on Another Device

The device to which you connect the ASA EtherChannel must also support 802.3ad EtherChannels; for example, you can connect to the Catalyst 6500 switch.

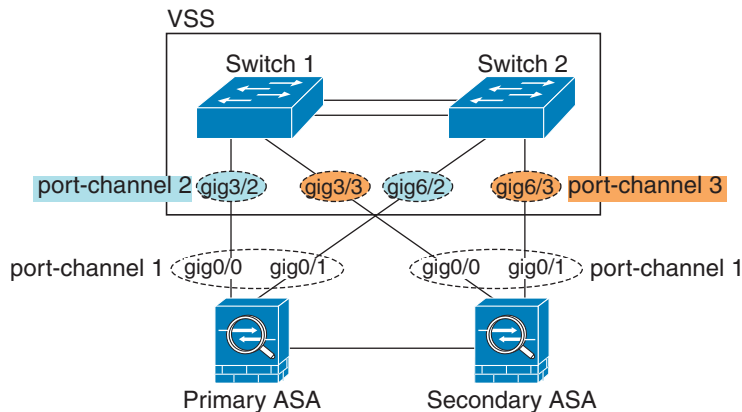
When the switch is part of a Virtual Switching System (VSS), then you can connect ASA interfaces within the same EtherChannel to separate switches in the VSS. The switch interfaces are members of the same EtherChannel port-channel interface, because the separate switches act like a single switch (see [Figure 10-1](#)).

**Figure 10-1 Connecting to a VSS**



If you use the ASA in an Active/Standby failover deployment, then you need to create separate EtherChannels on the switches in the VSS, one for each ASA (see [Figure 10-1](#)). On each ASA, a single EtherChannel connects to both switches. Even if you could group all switch interfaces into a single EtherChannel connecting to both ASAs (in this case, the EtherChannel will not be established because of the separate ASA system IDs), a single EtherChannel would not be desirable because you do not want traffic sent to the standby ASA.

**Figure 10-2 Active/Standby Failover and VSS**



## Link Aggregation Control Protocol

The Link Aggregation Control Protocol (LACP) aggregates interfaces by exchanging the Link Aggregation Control Protocol Data Units (LACPDU)s between two network devices.

You can configure each physical interface in an EtherChannel to be:

- **Active**—Sends and receives LACP updates. An active EtherChannel can establish connectivity with either an active or a passive EtherChannel. You should use the active mode unless you need to minimize the amount of LACP traffic.
- **Passive**—Receives LACP updates. A passive EtherChannel can only establish connectivity with an active EtherChannel.
- **On**—The EtherChannel is always on, and LACP is not used. An “on” EtherChannel can only establish a connection with another “on” EtherChannel.

LACP coordinates the automatic addition and deletion of links to the EtherChannel without user intervention. It also handles misconfigurations and checks that both ends of member interfaces are connected to the correct channel group. “On” mode cannot use standby interfaces in the channel group when an interface goes down, and the connectivity and configurations are not checked.

## Load Balancing

The ASA distributes packets to the interfaces in the EtherChannel by hashing the source and destination IP address of the packet (this criteria is configurable; see the [“Customizing the EtherChannel” section on page 10-31](#)). The hash result is a 3-bit value (0 to 7).

The eight hash result values are distributed in a round robin fashion between the channel group interfaces, starting with the interface with the lowest ID (slot/port). For example, all packets with a hash result of 0 go to GigabitEthernet 0/0, packets with a hash result of 1 go to GigabitEthernet 0/1, packets with a hash result of 2 go to GigabitEthernet 0/2, and so on.

Because there are eight hash result values regardless of how many active interfaces are in the EtherChannel, packets might not be distributed evenly depending on the number of active interfaces.

[Table 10-2](#) shows the load balancing amounts per interface for each number of active interfaces. The active interfaces in **bold** have even distribution.

**Table 10-2 Load Distribution per Interface**

| # of Active Interfaces | % Distribution Per Interface |              |              |              |              |              |              |              |
|------------------------|------------------------------|--------------|--------------|--------------|--------------|--------------|--------------|--------------|
|                        | 1                            | 2            | 3            | 4            | 5            | 6            | 7            | 8            |
| 1                      | <b>100%</b>                  | —            | —            | —            | —            | —            | —            | —            |
| 2                      | <b>50%</b>                   | <b>50%</b>   | —            | —            | —            | —            | —            | —            |
| 3                      | 37.5%                        | 37.5%        | 25%          | —            | —            | —            | —            | —            |
| 4                      | <b>25%</b>                   | <b>25%</b>   | <b>25%</b>   | <b>25%</b>   | —            | —            | —            | —            |
| 5                      | 25%                          | 25%          | 25%          | 12.5%        | 12.5%        | —            | —            | —            |
| 6                      | 25%                          | 25%          | 12.5%        | 12.5%        | 12.5%        | 12.5%        | —            | —            |
| 7                      | 25%                          | 12.5%        | 12.5%        | 12.5%        | 12.5%        | 12.5%        | 12.5%        | —            |
| 8                      | <b>12.5%</b>                 | <b>12.5%</b> | <b>12.5%</b> | <b>12.5%</b> | <b>12.5%</b> | <b>12.5%</b> | <b>12.5%</b> | <b>12.5%</b> |

If an active interface goes down and is not replaced by a standby interface, then traffic is rebalanced between the remaining links. The failure is masked from both Spanning Tree at Layer 2 and the routing table at Layer 3, so the switchover is transparent to other network devices.

## EtherChannel MAC Address

All interfaces that are part of the channel group share the same MAC address. This feature makes the EtherChannel transparent to network applications and users, because they only see the one logical connection; they have no knowledge of the individual links.

The port-channel interface uses the lowest numbered channel group interface MAC address as the port-channel MAC address. Alternatively you can manually configure a MAC address for the port-channel interface. In multiple context mode, you can automatically assign unique MAC addresses to interfaces, including an EtherChannel port interface. We recommend manually, or in multiple context mode, automatically configuring a unique MAC address in case the group channel interface membership changes. If you remove the interface that was providing the port-channel MAC address, then the port-channel MAC address changes to the next lowest numbered interface, thus causing traffic disruption.

## Licensing Requirements for ASA 5510 and Higher Interfaces

| Model    | License Requirement  |
|----------|--|
| ASA 5510 | VLANs <sup>1</sup> :<br>Base License: 50<br>Security Plus License: 100<br>Interface Speed:<br>Base License—All interfaces Fast Ethernet.<br>Security Plus License—Ethernet 0/0 and 0/1: Gigabit Ethernet; all others Fast Ethernet.<br>Interfaces of all types <sup>2</sup> :<br>Base License: 364<br>Security Plus License: 564 |
| ASA 5520 | VLANs <sup>1</sup> :<br>Base License: 150.<br>Interfaces of all types <sup>2</sup> :<br>Base License: 764  |
| ASA 5540 | VLANs <sup>1</sup> :<br>Base License: 200<br>Interfaces of all types <sup>2</sup> :<br>Base License: 964   |
| ASA 5550 | VLANs <sup>1</sup> :<br>Base License: 400<br>Interfaces of all types <sup>2</sup> :<br>Base License: 1764  |



| Model      | License Requirement   |
|------------|---|
| ASA 5580   | VLANs <sup>1</sup> :<br>Base License: 1024<br>Interfaces of all types <sup>2</sup> :<br>Base License: 4612  |
| ASA 5512-X | VLANs <sup>1</sup> :<br>Base License: 50<br>Security Plus License: 100<br>Interfaces of all types <sup>2</sup> :<br>Base License: 716<br>Security Plus License: 916   |
| ASA 5515-X | VLANs <sup>1</sup> :<br>Base License: 100<br>Interfaces of all types <sup>2</sup> :<br>Base License: 916  |
| ASA 5525-X | VLANs <sup>1</sup> :<br>Base License: 200<br>Interfaces of all types <sup>2</sup> :<br>Base License: 1316   |
| ASA 5545-X | VLANs <sup>1</sup> :<br>Base License: 300<br>Interfaces of all types <sup>2</sup> :<br>Base License: 1716   |
| ASA 5555-X | VLANs <sup>1</sup> :<br>Base License: 500<br>Interfaces of all types <sup>2</sup> :<br>Base License: 2516   |
| ASA 5585-X | VLANs <sup>1</sup> :<br>Base and Security Plus License: 1024<br>Interface Speed for SSP-10 and SSP-20:<br>Base License—1-Gigabit Ethernet for fiber interfaces<br>10 GE I/O License (Security Plus)—10-Gigabit Ethernet for fiber interfaces<br>(SSP-40 and SSP-60 support 10-Gigabit Ethernet by default.)<br>Interfaces of all types <sup>2</sup> :<br>Base and Security Plus License: 4612 |

1. For an interface to count against the VLAN limit, you must assign a VLAN to it.

2. The maximum number of combined interfaces; for example, VLANs, physical, redundant, bridge group, and EtherChannel interfaces. Every **interface** defined in the configuration counts against this limit.

# Guidelines and Limitations

This section includes the guidelines and limitations for this feature.

## Context Mode Guidelines

In multiple context mode, configure the physical interfaces in the system execution space according to the [“Starting Interface Configuration \(ASA 5510 and Higher\)”](#) section on page 10-12. Then, configure the logical interface parameters in the context execution space according to [Chapter 17, “Completing Interface Configuration \(Routed Mode\),”](#) or [Chapter 18, “Completing Interface Configuration \(Transparent Mode, 8.4 and Later\).”](#)

## Firewall Mode Guidelines

- For transparent mode, you can configure up to eight bridge groups per context or for a single mode device.
- Each bridge group can include up to four interfaces.
- For multiple context, transparent mode, each context must use different interfaces; you cannot share an interface across contexts.

## Failover Guidelines

- When you use a redundant or EtherChannel interface as a failover link, it must be pre-configured on both units in the failover pair; you cannot configure it on the primary unit and expect it to replicate to the secondary unit because *the failover link itself is required for replication*.
- If you use a redundant or EtherChannel interface for the state link, no special configuration is required; the configuration can replicate from the primary unit as normal.
- You can monitor redundant or EtherChannel interfaces for failover. When an active member interface fails over to a standby interface, this activity does not cause the redundant or EtherChannel interface to appear to be failed when being monitored for device-level failover. Only when all physical interfaces fail does the redundant or EtherChannel interface appear to be failed (for an EtherChannel interface, the number of member interfaces allowed to fail is configurable).
- If you use an EtherChannel interface for a failover or state link, then to prevent out-of-order packets, only one interface in the EtherChannel is used. If that interface fails, then the next interface in the EtherChannel is used. You cannot alter the EtherChannel configuration while it is in use as a failover link. To alter the configuration, you need to either shut down the EtherChannel while you make changes, or temporarily disable failover; either action prevents failover from occurring for the duration.
- Although you can configure the failover and failover state links on a port channel link, this port channel cannot be shared with other firewall traffic.

## Clustering Guidelines

- When you use a redundant or EtherChannel interface as the cluster control link, it must be pre-configured on all units in the cluster; you cannot configure it on the primary unit and expect it to replicate to member units because *the cluster control link itself is required for replication*.
- To configure a spanned EtherChannel, see the [“Configuring Spanned EtherChannels”](#) section on page 6-38.
- To configure an individual cluster interface, see the [“Configuring Individual Interfaces \(Recommended for the Management Interface\)”](#) section on page 6-33.

### Redundant Interface Guidelines

- You can configure up to 8 redundant interface pairs.
- All ASA configuration refers to the logical redundant interface instead of the member physical interfaces.
- You cannot use a redundant interface as part of an EtherChannel, nor can you use an EtherChannel as part of a redundant interface. You cannot use the same physical interfaces in a redundant interface and an EtherChannel interface. You can, however, configure both types on the ASA if they do not use the same physical interfaces.
- If you shut down the active interface, then the standby interface becomes active.
- Redundant interfaces do not support Management *slot/port* interfaces as members. You also cannot set a redundant interface comprised of non-Management interfaces as management-only.
- For failover guidelines, see the [“Failover Guidelines” section on page 10-10](#).
- For clustering guidelines, see the [“Clustering Guidelines” section on page 10-10](#).

### EtherChannel Guidelines

- You can configure up to 48 EtherChannels.
- Each channel group can have eight active interfaces. Note that you can assign up to 16 interfaces to a channel group. While only eight interfaces can be active, the remaining interfaces can act as standby links in case of interface failure.
- All interfaces in the channel group must be the same type and speed. The first interface added to the channel group determines the correct type and speed.
- The device to which you connect the ASA EtherChannel must also support 802.3ad EtherChannels; for example, you can connect to the Catalyst 6500 switch.
- The ASA does not support LACPDUs that are VLAN-tagged. If you enable native VLAN tagging on the neighboring switch using the Cisco IOS **vlan dot1Q tag native** command, then the ASA will drop the tagged LACPDUs. Be sure to disable native VLAN tagging on the neighboring switch. In multiple context mode, these messages are not included in a packet capture, so you cannot diagnose the issue effectively.
- The ASA does not support connecting an EtherChannel to a switch stack. If the ASA EtherChannel is connected cross stack, and if the Master switch is powered down, then the EtherChannel connected to the remaining switch will not come up.
- All ASA configuration refers to the logical EtherChannel interface instead of the member physical interfaces.
- You cannot use a redundant interface as part of an EtherChannel, nor can you use an EtherChannel as part of a redundant interface. You cannot use the same physical interfaces in a redundant interface and an EtherChannel interface. You can, however, configure both types on the ASA if they do not use the same physical interfaces.
- You cannot use interfaces on the 4GE SSM, including the integrated 4GE SSM in slot 1 on the ASA 5550, as part of an EtherChannel.
- For failover guidelines, see the [“Failover Guidelines” section on page 10-10](#).
- For clustering guidelines, see the [“Clustering Guidelines” section on page 10-10](#).

## Default Settings

This section lists default settings for interfaces if you do not have a factory default configuration. For information about the factory default configurations, see the [“Factory Default Configurations” section on page 2-18](#).

### Default State of Interfaces

The default state of an interface depends on the type and the context mode.

In multiple context mode, all allocated interfaces are enabled by default, no matter what the state of the interface is in the system execution space. However, for traffic to pass through the interface, the interface also has to be enabled in the system execution space. If you shut down an interface in the system execution space, then that interface is down in all contexts that share it.

In single mode or in the system execution space, interfaces have the following default states:

- Physical interfaces—Disabled.
- Redundant Interfaces—Enabled. However, for traffic to pass through the redundant interface, the member physical interfaces must also be enabled.
- Subinterfaces—Enabled. However, for traffic to pass through the subinterface, the physical interface must also be enabled.
- EtherChannel port-channel interfaces—Enabled. However, for traffic to pass through the EtherChannel, the channel group physical interfaces must also be enabled.

### Default Speed and Duplex

- By default, the speed and duplex for copper (RJ-45) interfaces are set to auto-negotiate.
- The fiber interface for the ASA 5550 (slot 1) and the 4GE SSM has a fixed speed and does not support duplex, but you can set the interface to negotiate link parameters (the default) or not to negotiate.
- For fiber interfaces for the ASA 5580 and 5585-X, the speed is set for automatic link negotiation.

### Default Connector Type

The ASA 5550 (slot 1) and the 4GE SSM for the ASA 5510 and higher ASA include two connector types: copper RJ-45 and fiber SFP. RJ-45 is the default. You can configure the ASA to use the fiber SFP connectors.

### Default MAC Addresses

By default, the physical interface uses the burned-in MAC address, and all subinterfaces of a physical interface use the same burned-in MAC address.

## Starting Interface Configuration (ASA 5510 and Higher)

This section includes the following topics:

- [Task Flow for Starting Interface Configuration, page 10-13](#)
- [Converting In-Use Interfaces to a Redundant or EtherChannel Interface, page 10-14](#)
- [Enabling the Physical Interface and Configuring Ethernet Parameters, page 10-23](#)
- [Configuring a Redundant Interface, page 10-25](#)

- [Configuring an EtherChannel, page 10-28](#)
- [Configuring VLAN Subinterfaces and 802.1Q Trunking, page 10-34](#)
- [Enabling Jumbo Frame Support \(Supported Models\), page 10-37](#)

## Task Flow for Starting Interface Configuration



### Note

If you have an existing configuration, and want to convert interfaces that are in use to a redundant or EtherChannel interface, perform your configuration offline using the CLI to minimize disruption. See the [“Converting In-Use Interfaces to a Redundant or EtherChannel Interface”](#) section on page 10-14.

To start configuring interfaces, perform the following steps:

- Step 1** (Multiple context mode) Complete all tasks in this section in the system execution space. If you are not already in the System configuration mode, in the Configuration > Device List pane, double-click **System** under the active device IP address.
- Step 2** Enable the physical interface, and optionally change Ethernet parameters. See the [“Enabling the Physical Interface and Configuring Ethernet Parameters”](#) section on page 10-23.
- Physical interfaces are disabled by default.
- Step 3** (Optional) Configure redundant interface pairs. See the [“Configuring a Redundant Interface”](#) section on page 10-25.
- A logical redundant interface pairs an active and a standby physical interface. When the active interface fails, the standby interface becomes active and starts passing traffic.
- Step 4** (Optional) Configure an EtherChannel. See the [“Configuring an EtherChannel”](#) section on page 10-28.
- An EtherChannel groups multiple Ethernet interfaces into a single logical interface.



### Note

You cannot use interfaces on the 4GE SSM, including the integrated 4GE SSM in slot 1 on the ASA 5550, as part of an EtherChannel.

- Step 5** (Optional) Configure VLAN subinterfaces. See the [“Configuring VLAN Subinterfaces and 802.1Q Trunking”](#) section on page 10-34.
- Step 6** (Optional) Enable jumbo frame support on the ASA 5580 and 5585-X according to the [“Enabling Jumbo Frame Support \(Supported Models\)”](#) section on page 10-37.
- Step 7** (Multiple context mode only) To complete the configuration of interfaces in the system execution space, perform the following tasks that are documented in [Chapter 5, “Configuring Multiple Context Mode”](#):
- To assign interfaces to contexts, see the [“Configuring a Security Context”](#) section on page 5-20.
  - (Optional) To automatically assign unique MAC addresses to context interfaces, see the [“Automatically Assigning MAC Addresses to Context Interfaces”](#) section on page 5-24.

The MAC address is used to classify packets within a context. If you share an interface, but do not have unique MAC addresses for the interface in each context, then the destination IP address is used to classify packets. Alternatively, you can manually assign MAC addresses within the context according to the [“Configuring the MAC Address and MTU”](#) section on page 17-13.

- Step 8** Complete the interface configuration according to [Chapter 17, “Completing Interface Configuration \(Routed Mode\),”](#) or [Chapter 18, “Completing Interface Configuration \(Transparent Mode, 8.4 and Later\).”](#)
- 

## Converting In-Use Interfaces to a Redundant or EtherChannel Interface

If you have an existing configuration and want to take advantage of the redundant or EtherChannel interface feature for interfaces that are currently in use, you will have some amount of downtime when you convert to the logical interfaces.

This section provides an overview of how to convert your existing interfaces to a redundant or EtherChannel interface with minimal downtime. See the [“Configuring a Redundant Interface” section on page 10-25](#) and the [“Configuring an EtherChannel” section on page 10-28](#) for more information.

- [Detailed Steps \(Single Mode\), page 10-14](#)
- [Detailed Steps \(Multiple Mode\), page 10-19](#)

### Detailed Steps (Single Mode)

We recommend that you update your configuration offline as a text file, and reimport the whole configuration for the following reasons:

- Because you cannot add a named interface as a member of a redundant or EtherChannel interface, you must remove the name from the interface. When you remove the name from the interface, any command that referred to that name is deleted. Because commands that refer to interface names are widespread throughout the configuration and affect multiple features, removing a name from an in-use interface at the CLI or in ASDM would cause significant damage to your configuration, not to mention significant downtime while you reconfigure all your features around a new interface name.
- Changing your configuration offline lets you use the same interface names for your new logical interfaces, so you do not need to touch the feature configurations that refer to interface names. You only need to change the interface configuration.
- Clearing the running configuration and immediately applying a new configuration will minimize the downtime of your interfaces. You will not be waiting to configure the interfaces in real time.

- 
- Step 1** Connect to the ASA; if you are using failover, connect to the active ASA.
- Step 2** If you are using failover, disable failover by choosing **Configuration > Device Management > High Availability > Failover** and unchecking the **Enable failover** check box. Click **Apply**, and continue at the warning.
- Step 3** Copy the running configuration by choosing **Tools > Backup Configurations** and backing up the running configuration to your local computer. You can then expand the zip file and edit the running-config.cfg file with a text editor.
- Be sure to save an extra copy of the old configuration in case you make an error when you edit it.
- Step 4** For each in-use interface that you want to add to a redundant or EtherChannel interface, cut and paste all commands under the **interface** command to the end of the interface configuration section for use in creating your new logical interfaces. The only exceptions are the following commands, which should stay with the physical interface configuration:
- **media-type**

- **speed**
- **duplex**
- **flowcontrol**



**Note** You can only add *physical* interfaces to an EtherChannel or redundant interface; you cannot have VLANs configured for the physical interfaces.

Be sure to match the above values for all interfaces in a given EtherChannel or redundant interface. Note that the duplex setting for an EtherChannel interface must be Full or Auto.

For example, you have the following interface configuration. The bolded commands are the ones we want to use with three new EtherChannel interfaces, and that you should cut and paste to the end of the interface section.

```
interface GigabitEthernet0/0
  nameif outside
  security-level 0
  ip address 10.86.194.225 255.255.255.0
  no shutdown
!
interface GigabitEthernet0/1
  nameif inside
  security-level 100
  ip address 192.168.1.3 255.255.255.0
  no shutdown
!
interface GigabitEthernet0/2
  shutdown
  no nameif
  no security-level
  no ip address
!
interface GigabitEthernet0/3
  shutdown
  no nameif
  no security-level
  no ip address
!
interface GigabitEthernet0/4
  shutdown
  no nameif
  no security-level
  no ip address
!
interface GigabitEthernet0/5
  shutdown
  no nameif
  no security-level
  no ip address
!
interface Management0/0
  nameif mgmt
  security-level 100
  ip address 10.1.1.5 255.255.255.0
  no shutdown
!
interface Management0/1
  shutdown
  no nameif
```

```
no security-level
no ip address
```

**Step 5** Above each pasted command section, create your new logical interfaces by entering one of the following commands:

- **interface redundant** *number* [1-8]
- **interface port-channel** *channel\_id* [1-48]

For example:

...

```
interface port-channel 1
nameif outside
security-level 0
ip address 10.86.194.225 255.255.255.0
no shutdown
!
interface port-channel 2
nameif inside
security-level 100
ip address 192.168.1.3 255.255.255.0
no shutdown
!
interface port-channel 3
nameif mgmt
security-level 100
ip address 10.1.1.5 255.255.255.0
no shutdown
```

**Step 6** Assign the physical interfaces to the new logical interfaces:

- Redundant interface—Enter the following commands under the new **interface redundant** command:

```
member-interface physical_interface1
member-interface physical_interface2
```

Where the physical interfaces are any two interfaces of the same type (either formerly in use or unused). You cannot assign a Management interface to a redundant interface.

For example, to take advantage of existing cabling, you would continue to use the formerly in-use interfaces in their old roles as part of the inside and outside redundant interfaces:

```
interface redundant 1
nameif outside
security-level 0
ip address 10.86.194.225 255.255.255.0
member-interface GigabitEthernet0/0
member-interface GigabitEthernet0/2

interface redundant 2
nameif inside
security-level 100
ip address 192.168.1.3 255.255.255.0
member-interface GigabitEthernet0/1
member-interface GigabitEthernet0/3
```

- EtherChannel interface—Enter the following command under each interface you want to add to the EtherChannel (either formerly in use or unused). You can assign up to 16 interfaces per EtherChannel, although only eight can be active; the others are in a standby state in case of failure.

```
channel-group channel_id mode active
```



For example, to take advantage of existing cabling, you would continue to use the formerly in-use interfaces in their old roles as part of the inside and outside EtherChannel interfaces:

```
interface GigabitEthernet0/0
  channel-group 1 mode active
  no shutdown
!
interface GigabitEthernet0/1
  channel-group 2 mode active
  no shutdown
!
interface GigabitEthernet0/2
  channel-group 1 mode active
  shutdown
  no nameif
  no security-level
  no ip address
!
interface GigabitEthernet0/3
  channel-group 1 mode active
  shutdown
  no nameif
  no security-level
  no ip address
!
interface GigabitEthernet0/4
  channel-group 2 mode active
  shutdown
  no nameif
  no security-level
  no ip address
!
interface GigabitEthernet0/5
  channel-group 2 mode active
  shutdown
  no nameif
  no security-level
  no ip address
!
interface Management0/0
  channel-group 3 mode active
  no shutdown
!
interface Management0/1
  channel-group 3 mode active
  shutdown
  no nameif
  no security-level
  no ip address
...

```

- Step 7** Enable each formerly unused interface that is now part of a logical interface by adding **no** in front of the **shutdown** command.

For example, your final EtherChannel configuration is:

```
interface GigabitEthernet0/0
  channel-group 1 mode active
  no shutdown
!
interface GigabitEthernet0/1
  channel-group 2 mode active

```

```

no shutdown
!
interface GigabitEthernet0/2
channel-group 1 mode active
no shutdown
no nameif
no security-level
no ip address
!
interface GigabitEthernet0/3
channel-group 1 mode active
no shutdown
no nameif
no security-level
no ip address
!
interface GigabitEthernet0/4
channel-group 2 mode active
no shutdown
no nameif
no security-level
no ip address
!
interface GigabitEthernet0/5
channel-group 2 mode active
no shutdown
no nameif
no security-level
no ip address
!
interface Management0/0
channel-group 3 mode active
no shutdown
!
interface Management0/1
channel-group 3 mode active
no shutdown
no nameif
no security-level
no ip address
!
interface port-channel 1
nameif outside
security-level 0
ip address 10.86.194.225 255.255.255.0
!
interface port-channel 2
nameif inside
security-level 100
ip address 192.168.1.3 255.255.255.0
!
interface port-channel 3
nameif mgmt
security-level 100
ip address 10.1.1.5 255.255.255.0

```

**Note**

Other optional EtherChannel parameters can be configured after you import the new configuration. See the [“Configuring an EtherChannel”](#) section on page 10-28.

**Step 8** Save the entire new configuration, including the altered interface section.

- Step 9** Re-zip the backup folder with the altered configuration.
- Step 10** Choose **Tools > Restore Configurations**, and choose the altered configuration zip file. Be sure to replace the existing running configuration; do not merge them. See the [“Restoring Configurations” section on page 101-25](#) for more information.
- Step 11** Reenable failover by choosing **Configuration > Device Management > High Availability > Failover**, and checking the **Enable failover** check box. Click **Apply**, and click **No** when prompted if you want to configure basic failover settings.
- 

### Detailed Steps (Multiple Mode)

We recommend that you update your system and context configurations offline as text files, and reimport them for the following reasons:

- Because you cannot add an allocated interface as a member of a redundant or EtherChannel interface, you must deallocate the interface from any contexts. When you deallocate the interface, any context command that referred to that interface is deleted. Because commands that refer to interfaces are widespread throughout the configuration and affect multiple features, removing an allocation from an in-use interface at the CLI or in ASDM would cause significant damage to your configuration, not to mention significant downtime while you reconfigure all your features around a new interface.
- Changing your configuration offline lets you use the same interface names for your new logical interfaces, so you do not need to touch the feature configurations that refer to interface names. You only need to change the interface configuration.
- Clearing the running system configuration and immediately applying a new configuration will minimize the downtime of your interfaces. You will not be waiting to configure the interfaces in real time.

- 
- Step 1** Connect to the ASA, and change to the system; if you are using failover, connect to the active ASA.
- Step 2** If you are using failover, disable failover by choosing **Configuration > Device Management > High Availability > Failover** and unchecking the **Enable failover** check box. Click **Apply**, and continue at the warning.
- Step 3** In the system, copy the running configuration by choosing **File > Show Running Configuration in New Window** and copying the display output to a text editor.

Be sure to save an extra copy of the old configuration in case you make an error when you edit it.

For example, you have the following interface configuration and allocation in the system configuration, with shared interfaces between two contexts.

#### System

```
interface GigabitEthernet0/0
  no shutdown
interface GigabitEthernet0/1
  no shutdown
interface GigabitEthernet0/2
  shutdown
interface GigabitEthernet0/3
  shutdown
interface GigabitEthernet0/4
  shutdown
interface GigabitEthernet0/5
  shutdown
```

```

interface Management0/0
  no shutdown
interface Management1/0
  shutdown
!
context customerA
  allocate-interface gigabitethernet0/0 int1
  allocate-interface gigabitethernet0/1 int2
  allocate-interface management0/0 mgmt
context customerB
  allocate-interface gigabitethernet0/0
  allocate-interface gigabitethernet0/1
  allocate-interface management0/0

```

- Step 4** Get copies of *all* context configurations that will use the new EtherChannel or redundant interface. See the [“Backing Up and Restoring Configurations or Other Files”](#) section on page 101-20.

For example, you download the following context configurations (interface configuration shown):

#### CustomerA Context

```

interface int1
  nameif outside
  security-level 0
  ip address 10.86.194.225 255.255.255.0
!
interface int2
  nameif inside
  security-level 100
  ip address 192.168.1.3 255.255.255.0
  no shutdown
!
interface mgmt
  nameif mgmt
  security-level 100
  ip address 10.1.1.5 255.255.255.0
  management-only

```

#### CustomerB Context

```

interface GigabitEthernet0/0
  nameif outside
  security-level 0
  ip address 10.20.15.5 255.255.255.0
!
interface GigabitEthernet0/1
  nameif inside
  security-level 100
  ip address 192.168.6.78 255.255.255.0
!
interface Management0/0
  nameif mgmt
  security-level 100
  ip address 10.8.1.8 255.255.255.0
  management-only

```

- Step 5** In the system configuration, create the new logical interfaces according to the [“Configuring a Redundant Interface”](#) section on page 10-25 or the [“Configuring an EtherChannel”](#) section on page 10-28. Be sure to enter the **no shutdown** command on any additional physical interfaces you want to use as part of the logical interface.

**Note**

You can only add *physical* interfaces to an EtherChannel or redundant interface; you cannot have VLANs configured for the physical interfaces.

Be sure to match physical interface parameters such as speed and duplex for all interfaces in a given EtherChannel or redundant interface. Note that the duplex setting for an EtherChannel interface must be Full or Auto.

For example, the new configuration is:

**System**

```
interface GigabitEthernet0/0
  channel-group 1 mode active
  no shutdown
!
interface GigabitEthernet0/1
  channel-group 2 mode active
  no shutdown
!
interface GigabitEthernet0/2
  channel-group 1 mode active
  no shutdown
!
interface GigabitEthernet0/3
  channel-group 1 mode active
  no shutdown
!
interface GigabitEthernet0/4
  channel-group 2 mode active
  no shutdown
!
interface GigabitEthernet0/5
  channel-group 2 mode active
  no shutdown
!
interface Management0/0
  channel-group 3 mode active
  no shutdown
!
interface Management0/1
  channel-group 3 mode active
  no shutdown
!
interface port-channel 1
interface port-channel 2
interface port-channel 3
```

**Step 6** Change the interface allocation per context to use the new EtherChannel or redundant interfaces. See the [“Configuring a Security Context” section on page 5-20](#).

For example, to take advantage of existing cabling, you would continue to use the formerly in-use interfaces in their old roles as part of the inside and outside redundant interfaces:

```
context customerA
  allocate-interface port-channel1 int1
  allocate-interface port-channel2 int2
  allocate-interface port-channel3 mgmt
context customerB
  allocate-interface port-channel1
  allocate-interface port-channel2
```

```
allocate-interface port-channel3
```

**Note**

You might want to take this opportunity to assign mapped names to interfaces if you have not done so already. For example, the configuration for customerA does not need to be altered at all; it just needs to be reapplied on the ASA. The customerB configuration, however, needs to have all of the interface IDs changed; if you assign mapped names for customerB, you still have to change the interface IDs in the context configuration, but mapped names might help future interface changes.

- Step 7** For contexts that do not use mapped names, change the context configuration to use the new EtherChannel or redundant interface ID. (Contexts that use mapped interface names do not require any alteration.)

For example:

**CustomerB Context**

```
interface port-channel1
  nameif outside
  security-level 0
  ip address 10.20.15.5 255.255.255.0
!
interface port-channel2
  nameif inside
  security-level 100
  ip address 192.168.6.78 255.255.255.0
!
interface port-channel3
  nameif mgmt
  security-level 100
  ip address 10.8.1.8 255.255.255.0
  management-only
```

- Step 8** Copy the new context configuration files over the old ones. For example, for contexts in flash memory, in the system choose **Tools > File Management**, then choose **File Transfer > Between Local PC and Flash**. This tool lets you choose each configuration file and copy it to your local computer. This change only affects the startup configuration; the running configuration is still using the old context configuration.
- Step 9** Copy the entire new system configuration to the clipboard, including the altered interface section.
- Step 10** In ASDM, choose **Tools > Command Line Interface**, and click the **Multiple Line** radio button.
- Step 11** Enter **clear configure all** as the first line, paste the new configuration after it, and click **Send**. The **clear** command clears the running configuration (both system and contexts), before applying the new configuration.
- Traffic through the ASA stops at this point. All of the new context configurations now reload. When they are finished reloading, traffic through the ASA resumes.
- Step 12** Close the Command Line Interface dialog box, and choose **File > Refresh ASDM with the Running Configuration**.
- Step 13** Reenable failover by choosing **Configuration > Device Management > High Availability > Failover**, and checking the **Enable failover** check box. Click **Apply**, and click **No** when prompted if you want to configure basic failover settings.

## Enabling the Physical Interface and Configuring Ethernet Parameters

This section describes how to:

- Enable the physical interface
- Set a specific speed and duplex (if available)
- Enable pause frames for flow control

### Prerequisites

For multiple context mode, complete this procedure in the system execution space. If you are not already in the System configuration mode, in the Configuration > Device List pane, double-click **System** under the active device IP address.

### Detailed Steps

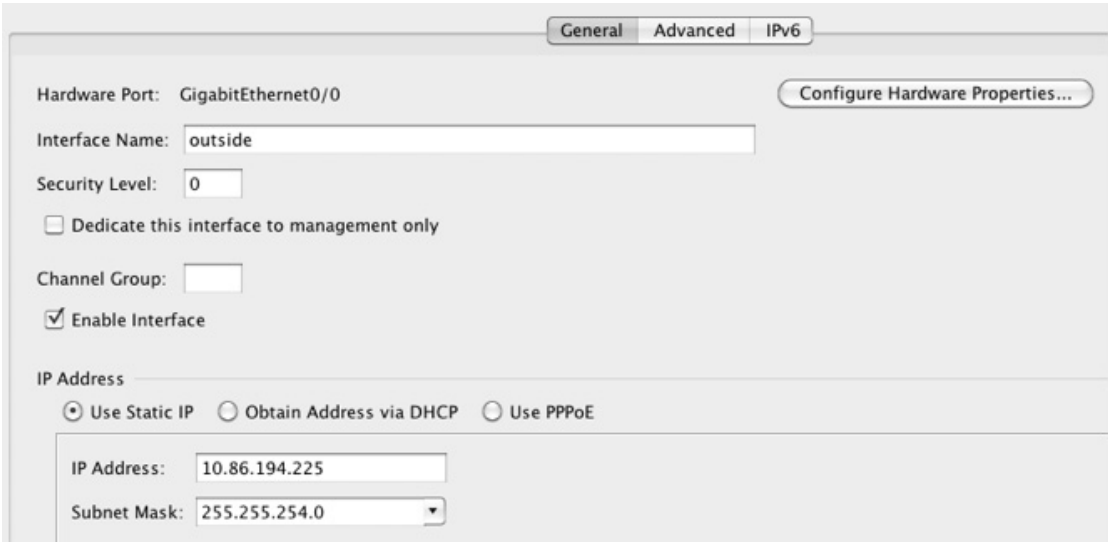
**Step 1** Depending on your context mode:

- For single mode, choose the **Configuration > Device Setup > Interfaces** pane.
- For multiple mode in the System execution space, choose the **Configuration > Context Management > Interfaces** pane.

By default, all physical interfaces are listed.

**Step 2** Click a physical interface that you want to configure, and click **Edit**.

The Edit Interface dialog box appears.



#### Note

In single mode, this procedure only covers a subset of the parameters on the Edit Interface dialog box; to configure other parameters, see [Chapter 17, “Completing Interface Configuration \(Routed Mode\),”](#) or [Chapter 18, “Completing Interface Configuration \(Transparent Mode, 8.4 and Later\).”](#) Note that in multiple context mode, before you complete your interface configuration, you need to allocate interfaces to contexts. See the “[Configuring Multiple Contexts](#)” section on page 5-15.

**Step 3** To enable the interface, check the **Enable Interface** check box.

**Step 4** To add a description, enter text in the Description field.

The description can be up to 240 characters on a single line, without carriage returns. In the case of a failover or state link, the description is fixed as “LAN Failover Interface,” “STATE Failover Interface,” or “LAN/STATE Failover Interface,” for example. You cannot edit this description. The fixed description overwrites any description you enter here if you make this interface a failover or state link.

**Step 5** (Optional) To set the media type, duplex, speed, and enable pause frames for flow control, click **Configure Hardware Properties**.



- a. For slot 1 on the ASA 5550 ASA or the 4GE SSM, you can choose either **RJ-45** or **SFP** from the Media Type drop-down list.  
RJ-45 is the default.
- b. To set the duplex for RJ-45 interfaces, choose **Full**, **Half**, or **Auto**, depending on the interface type, from the Duplex drop-down list.



**Note** The duplex setting for an EtherChannel interface must be Full or Auto.

- c. To set the speed, choose a value from the Speed drop-down list.

The speeds available depend on the interface type. For SFP interfaces, you can set the speed to Negotiate or Nonegotiate. Negotiate (the default) enables link negotiation, which exchanges flow-control parameters and remote fault information. Nonegotiate does not negotiate link parameters. For RJ-45 interfaces on the ASA 5500 series ASA, the default auto-negotiation setting also includes the Auto-MDI/MDIX feature. See the [“Auto-MDI/MDIX Feature” section on page 10-2](#).

- d. To enable pause (XOFF) frames for flow control on 1-Gigabit and 10-Gigabit Ethernet interfaces, check the **Enable Pause Frame** check box.

If you have a traffic burst, dropped packets can occur if the burst exceeds the buffering capacity of the FIFO buffer on the NIC and the receive ring buffers. Enabling pause frames for flow control can alleviate this issue. Pause (XOFF) and XON frames are generated automatically by the NIC hardware based on the FIFO buffer usage. A pause frame is sent when the buffer usage exceeds the high-water mark. The default *high\_water* value is 128 KB (10 GigabitEthernet) and 24 KB (1 GigabitEthernet); you can set it between 0 and 511 (10 GigabitEthernet) or 0 and 47 KB (1 GigabitEthernet). After a pause is sent, an XON frame can be sent when the buffer usage is reduced below the low-water mark. By default, the *low\_water* value is 64 KB (10 GigabitEthernet) and 16 KB (1 GigabitEthernet); you can set it between 0 and 511 (10 GigabitEthernet) or 0 and



47 KB (1 GigabitEthernet). The link partner can resume traffic after receiving an XON, or after the XOFF expires, as controlled by the timer value in the pause frame. The default *pause\_time* value is 26624; you can set it between 0 and 65535. If the buffer usage is consistently above the high-water mark, pause frames are sent repeatedly, controlled by the pause refresh threshold value.

To change the default values for the Low Watermark, High Watermark, and Pause Time, uncheck the **Use Default Values** check box.



**Note** Only flow control frames defined in 802.3x are supported. Priority-based flow control is not supported.

- e. Click **OK** to accept the Hardware Properties changes.

**Step 6** Click **OK** to accept the Interface changes.

## What to Do Next

Optional Tasks:

- Configure redundant interface pairs. See the [“Configuring a Redundant Interface” section on page 10-25](#).
- Configure an EtherChannel. See the [“Configuring an EtherChannel” section on page 10-28](#).
- Configure VLAN subinterfaces. See the [“Configuring VLAN Subinterfaces and 802.1Q Trunking” section on page 10-34](#).

Required Tasks:

- For multiple context mode, assign interfaces to contexts and automatically assign unique MAC addresses to context interfaces. See the [“Configuring Multiple Contexts” section on page 5-15](#).
- For single context mode, complete the interface configuration. See [Chapter 17, “Completing Interface Configuration \(Routed Mode\)”](#) or [Chapter 18, “Completing Interface Configuration \(Transparent Mode, 8.4 and Later\)”](#).

## Configuring a Redundant Interface

A logical redundant interface consists of a pair of physical interfaces: an active and a standby interface. When the active interface fails, the standby interface becomes active and starts passing traffic. You can configure a redundant interface to increase the ASA reliability. This feature is separate from device-level failover, but you can configure redundant interfaces as well as failover if desired.

This section describes how to configure redundant interfaces and includes the following topics:

- [Configuring a Redundant Interface, page 10-25](#)
- [Changing the Active Interface, page 10-28](#)

## Configuring a Redundant Interface

This section describes how to create a redundant interface. By default, redundant interfaces are enabled.

### Guidelines and Limitations

- You can configure up to 8 redundant interface pairs.
- Redundant interface delay values are configurable, but by default the ASA inherits the default delay values based on the physical type of its member interfaces.
- See also the “Redundant Interface Guidelines” section on page 10-11.

### Prerequisites

- Both member interfaces must be of the same physical type. For example, both must be Ethernet.
- You cannot add a physical interface to the redundant interface if you configured a name for it. You must first remove the name in the Configuration > Device Setup > Interfaces pane.
- For multiple context mode, complete this procedure in the system execution space. If you are not already in the System configuration mode, in the Configuration > Device List pane, double-click **System** under the active device IP address.

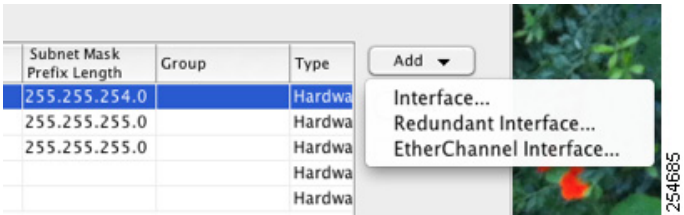


**Caution**

If you are using a physical interface already in your configuration, removing the name will clear any configuration that refers to the interface.

### Detailed Steps

- Step 1** Depending on your context mode:
- For single mode, choose the **Configuration > Device Setup > Interfaces** pane.
  - For multiple mode in the System execution space, choose the **Configuration > Context Management > Interfaces** pane.
- Step 2** Choose **Add > Redundant Interface**.



The Add Redundant Interface dialog box appears.

**Note**

In single mode, this procedure only covers a subset of the parameters on the Edit Redundant Interface dialog box; to configure other parameters, see [Chapter 17, “Completing Interface Configuration \(Routed Mode\),”](#) or [Chapter 18, “Completing Interface Configuration \(Transparent Mode, 8.4 and Later\).”](#) Note that in multiple context mode, before you complete your interface configuration, you need to allocate interfaces to contexts. See the [“Configuring Multiple Contexts”](#) section on page 5-15.

- Step 3** In the Redundant ID field, enter an integer between 1 and 8.
- Step 4** From the Primary Interface drop-down list, choose the physical interface you want to be primary.  
Be sure to pick an interface that does not have a subinterface and that has not already been allocated to a context. Redundant interfaces do not support Management *slot/port* interfaces as members.
- Step 5** From the Secondary Interface drop-down list, choose the physical interface you want to be secondary.
- Step 6** If the interface is not already enabled, check the **Enable Interface** check box.  
The interface is enabled by default. To disable it, uncheck the check box.
- Step 7** To add a description, enter text in the Description field.  
The description can be up to 240 characters on a single line, without carriage returns. For multiple context mode, the system description is independent of the context description. In the case of a failover or state link, the description is fixed as “LAN Failover Interface,” “STATE Failover Interface,” or “LAN/STATE Failover Interface,” for example. You cannot edit this description. The fixed description overwrites any description you enter here if you make this interface a failover or state link.
- Step 8** Click **OK**.  
You return to the Interfaces pane. The member interfaces now show a lock to the left of the interface ID showing that only basic parameters can be configured for it. The redundant interface is added to the table.

|  |         |     |            |          |         |
|--|---------|-----|------------|----------|---------|
|  GigabitEthernet0/2 | Enabled | No  | Redundant8 | Hardware | native  |
| GigabitEthernet0/3   | Enabled | No  |            | Hardware | native  |
| GigabitEthernet0/3.10  | Enabled | No  |            | Logical  | vlan100 |
| GigabitEthernet0/3.11  | Enabled | No  |            | Logical  | vlan11  |
| Management0/0  | Enabled | No  |            | Hardware | native  |
| Redundant8   | Enabled | Yes |            | Logical  | native  |

254710

## What to Do Next

Optional Task:

- Configure VLAN subinterfaces. See the [“Configuring VLAN Subinterfaces and 802.1Q Trunking” section on page 10-34](#).

Required Tasks:

- For multiple context mode, assign interfaces to contexts and automatically assign unique MAC addresses to context interfaces. See the [“Configuring Multiple Contexts” section on page 5-15](#).
- For single context mode, complete the interface configuration. See the [Chapter 17, “Completing Interface Configuration \(Routed Mode\)”](#), or [Chapter 18, “Completing Interface Configuration \(Transparent Mode, 8.4 and Later\)”](#).

## Changing the Active Interface

By default, the active interface is the first interface listed in the configuration, if it is available. To view which interface is active, enter the following command in the Tools > Command Line Interface tool:

```
show interface redundantnumber detail | grep Member
```

For example:

```
show interface redundant1 detail | grep Member
Members GigabitEthernet0/3 (Active), GigabitEthernet0/2
```

To change the active interface, enter the following command:

```
redundant-interface redundantnumber active-member physical_interface
```

where the **redundantnumber** argument is the redundant interface ID, such as **redundant1**.

The *physical\_interface* is the member interface ID that you want to be active.

## Configuring an EtherChannel

This section describes how to create an EtherChannel port-channel interface, assign interfaces to the EtherChannel, and customize the EtherChannel.

This section includes the following topics:

- [Adding Interfaces to the EtherChannel, page 10-29](#)
- [Customizing the EtherChannel, page 10-31](#)

## Adding Interfaces to the EtherChannel

This section describes how to create an EtherChannel port-channel interface and assign interfaces to the EtherChannel. By default, port-channel interfaces are enabled.

### Guidelines and Limitations

- You can configure up to 48 EtherChannels.
- Each channel group can have eight active interfaces. Note that you can assign up to 16 interfaces to a channel group. While only eight interfaces can be active, the remaining interfaces can act as standby links in case of interface failure.
- You cannot use interfaces on the 4GE SSM, including the integrated 4GE SSM in slot 1 on the ASA 5550, as part of an EtherChannel.
- To configure a spanned EtherChannel for clustering, see the [“Configuring Spanned EtherChannels” section on page 6-38](#) instead of this procedure.
- See also the [“EtherChannel Guidelines” section on page 10-11](#).

### Prerequisites

- All interfaces in the channel group must be the same type, speed, and duplex. Half duplex is not supported.
- You cannot add a physical interface to the channel group if you configured a name for it. You must first remove the name in the Configuration > Device Setup > Interfaces pane.
- For multiple context mode, complete this procedure in the system execution space. If you are not already in the System configuration mode, in the Configuration > Device List pane, double-click **System** under the active device IP address.

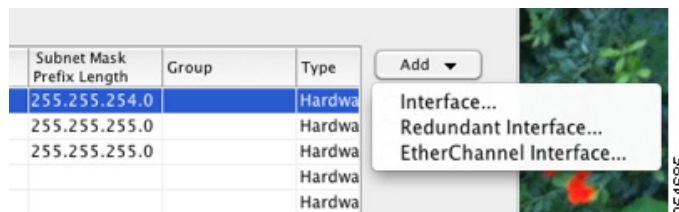


#### Caution

If you are using a physical interface already in your configuration, removing the name will clear any configuration that refers to the interface.

### Detailed Steps

- Step 1** Depending on your context mode:
- For single mode, choose the **Configuration > Device Setup > Interfaces** pane.
  - For multiple mode in the System execution space, choose the **Configuration > Context Management > Interfaces** pane.
- Step 2** Choose **Add > EtherChannel Interface**.



The Add EtherChannel Interface dialog box appears.

**Note**

In single mode, this procedure only covers a subset of the parameters on the Edit EtherChannel Interface dialog box; to configure other parameters, see [Chapter 17, “Completing Interface Configuration \(Routed Mode\),”](#) or [Chapter 18, “Completing Interface Configuration \(Transparent Mode, 8.4 and Later\).”](#) Note that in multiple context mode, before you complete your interface configuration, you need to allocate interfaces to contexts. See the [“Configuring Multiple Contexts”](#) section on page 5-15.

**Step 3** In the Port Channel ID field, enter a number between 1 and 48.

**Step 4** In the Available Physical Interface area, click an interface and then click **Add >>** to move it to the Members in Group area.

In transparent mode, if you create a channel group with multiple Management interfaces, then you can use this EtherChannel as the management-only interface.

**Step 5** Repeat for each interface you want to add to the channel group.

Make sure all interfaces are the same type and speed. The first interface you add determines the type and speed of the EtherChannel. Any non-matching interfaces you add will be put into a suspended state. ASDM does not prevent you from adding non-matching interfaces.

**Step 6** Click **OK**.

You return to the Interfaces pane. The member interfaces now show a lock to the left of the interface ID showing that only basic parameters can be configured for it. The EtherChannel interface is added to the table.

|  |          |  |  |  |               |        |
|--|----------|--|--|--|---------------|--------|
|  GigabitEthernet0/3 | Disabled |  |  |  | Port-channel1 | Hardv  |
| Management0/0  | Disabled |  |  |  |               | Hardv  |
| Port-channel1  | Enabled  |  |  |  |               | Etherd |

## What to Do Next

### Optional Tasks:

- Customize the EtherChannel interface. See the [“Customizing the EtherChannel”](#) section on page 10-31.
- Configure VLAN subinterfaces. See the [“Configuring VLAN Subinterfaces and 802.1Q Trunking”](#) section on page 10-34.

### Required Tasks:

- For multiple context mode, assign interfaces to contexts and automatically assign unique MAC addresses to context interfaces. See the [“Configuring Multiple Contexts”](#) section on page 5-15.
- For single context mode, complete the interface configuration. See the [Chapter 17, “Completing Interface Configuration \(Routed Mode\),”](#) or [Chapter 18, “Completing Interface Configuration \(Transparent Mode, 8.4 and Later\).”](#)

## Customizing the EtherChannel

This section describes how to set the maximum number of interfaces in the EtherChannel, the minimum number of operating interfaces for the EtherChannel to be active, the load balancing algorithm, and other optional parameters.

### Detailed Steps

- 
- Step 1** Depending on your context mode:
- For single mode, choose the **Configuration > Device Setup > Interfaces** pane.
  - For multiple mode in the System execution space, choose the **Configuration > Context Management > Interfaces** pane.
- Step 2** Click the port-channel interface you want to customize, and click **Edit**.  
The Edit Interface dialog box appears.
- Step 3** To override the media type, duplex, speed, and pause frames for flow control for all member interfaces, click **Configure Hardware Properties**. This method provides a shortcut to set these parameters because these parameters must match for all interfaces in the channel group.



- a. For slot 1 on the ASA 5550 ASA or the 4GE SSM, you can choose either **RJ-45** or **SFP** from the Media Type drop-down list.  
RJ-45 is the default.
- b. To set the duplex for RJ-45 interfaces, choose **Full** or **Auto**, depending on the interface type, from the Duplex drop-down list. Half is not supported for the EtherChannel.
- c. To set the speed, choose a value from the Speed drop-down list.

The speeds available depend on the interface type. For SFP interfaces, you can set the speed to Negotiate or Nonnegotiate. Negotiate (the default) enables link negotiation, which exchanges flow-control parameters and remote fault information. Nonnegotiate does not negotiate link parameters. For RJ-45 interfaces on the ASA 5500 series ASA, the default auto-negotiation setting also includes the Auto-MDI/MDIX feature. See the [“Auto-MDI/MDIX Feature”](#) section on page 10-2.

- d. To enable pause (XOFF) frames for flow control on 1-Gigabit and 10-Gigabit Ethernet interfaces, check the **Enable Pause Frame** check box.

If you have a traffic burst, dropped packets can occur if the burst exceeds the buffering capacity of the FIFO buffer on the NIC and the receive ring buffers. Enabling pause frames for flow control can alleviate this issue. Pause (XOFF) and XON frames are generated automatically by the NIC hardware based on the FIFO buffer usage. A pause frame is sent when the buffer usage exceeds the High Watermark. The default value is 128 KB; you can set it between 0 and 511. After a pause is sent, an XON frame can be sent when the buffer usage is reduced below the Low Watermark. By default, the value is 64 KB; you can set it between 0 and 511. The link partner can resume traffic after receiving an XON, or after the XOFF expires, as controlled by the Pause Time value in the pause frame. The default value is 26624; you can set it between 0 and 65535. If the buffer usage is consistently above the High Watermark, pause frames are sent repeatedly, controlled by the pause refresh threshold value.

To change the default values for the Low Watermark, High Watermark, and Pause Time, uncheck the **Use Default Values** check box.

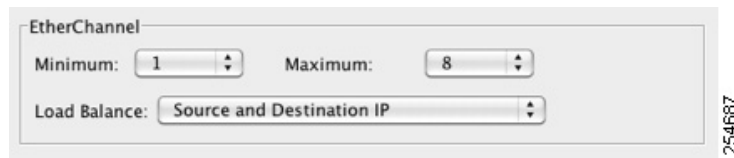


**Note** Only flow control frames defined in 802.3x are supported. Priority-based flow control is not supported.

- e. Click **OK** to accept the Hardware Properties changes.

**Step 4** To customize the EtherChannel, click the **Advanced** tab.





EtherChannel

Minimum: 1 Maximum: 8

Load Balance: Source and Destination IP

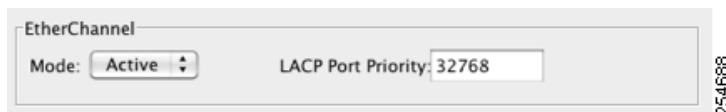
- a. In the EtherChannel area, from the Minimum drop-down list, choose the minimum number of active interfaces required for the EtherChannel to be active, between 1 and 8. The default is 1.
- b. From the Maximum drop-down list, choose the maximum number of active interfaces allowed in the EtherChannel, between 1 and 8. The default is 8.
- c. From the Load Balance drop-down list, select the criteria used to load balance the packets across the group channel interfaces. By default, the ASA balances the packet load on interfaces according to the source and destination IP address of the packet. If you want to change the properties on which the packet is categorized, choose a different set of criteria. For example, if your traffic is biased heavily towards the same source and destination IP addresses, then the traffic assignment to interfaces in the EtherChannel will be unbalanced. Changing to a different algorithm can result in more evenly distributed traffic. For more information about load balancing, see the [“Load Balancing” section on page 10-7](#).

**Step 5** Click **OK**.

You return to the Interfaces pane.

**Step 6** To set the mode and priority for a physical interface in the channel group:

- a. Click the physical interface in the Interfaces table, and click **Edit**.  
The Edit Interface dialog box appears.
- b. Click the **Advanced** tab.



EtherChannel

Mode: Active LACP Port Priority: 32768

- c. In the EtherChannel area, from the Mode drop down list, choose **Active**, **Passive**, or **On**. We recommend using Active mode (the default). For information about active, passive, and on modes, see the [“Link Aggregation Control Protocol” section on page 10-6](#).
- d. In the LACP Port Priority field, set the port priority between 1 and 65535. The default is 32768. The higher the number, the lower the priority. The ASA uses this setting to decide which interfaces are active and which are standby if you assign more interfaces than can be used. If the port priority setting is the same for all interfaces, then the priority is determined by the interface ID (slot/port). The lowest interface ID is the highest priority. For example, GigabitEthernet 0/0 is a higher priority than GigabitEthernet 0/1.

If you want to prioritize an interface to be active even though it has a higher interface ID, then set this command to have a lower value. For example, to make GigabitEthernet 1/3 active before GigabitEthernet 0/7, then make the priority value be 12345 on the 1/3 interface vs. the default 32768 on the 0/7 interface.

If the device at the other end of the EtherChannel has conflicting port priorities, the system priority is used to determine which port priorities to use. See [Step 9](#) to set the system priority.

**Step 7** Click **OK**.

You return to the Interfaces pane.

**Step 8** Click **Apply**.

**Step 9** To set the LACP system priority, perform the following steps. If the device at the other end of the EtherChannel has conflicting port priorities, the system priority is used to determine which port priorities to use. See [Step 6d](#) for more information.

a. Depending on your context mode:

- For single mode, choose the **Configuration > Device Setup > EtherChannel** pane.
- For multiple mode in the System execution space, choose the **Configuration > Context Management > EtherChannel** pane.



b. In the LACP System Priority field, enter a priority between 1 and 65535.  
The default is 32768.

## What to Do Next

Optional Task:

- Configure VLAN subinterfaces. See the [“Configuring VLAN Subinterfaces and 802.1Q Trunking” section on page 10-34](#).

Required Tasks:

- For multiple context mode, assign interfaces to contexts and automatically assign unique MAC addresses to context interfaces. See the [“Configuring Multiple Contexts” section on page 5-15](#).
- For single context mode, complete the interface configuration. See the [Chapter 17, “Completing Interface Configuration \(Routed Mode\)”](#) or [Chapter 18, “Completing Interface Configuration \(Transparent Mode, 8.4 and Later\)”](#).

## Configuring VLAN Subinterfaces and 802.1Q Trunking

Subinterfaces let you divide a physical, redundant, or EtherChannel interface into multiple logical interfaces that are tagged with different VLAN IDs. An interface with one or more VLAN subinterfaces is automatically configured as an 802.1Q trunk. Because VLANs allow you to keep traffic separate on a given physical interface, you can increase the number of interfaces available to your network without adding additional physical interfaces or ASAs. This feature is particularly useful in multiple context mode so that you can assign unique interfaces to each context.

### Guidelines and Limitations

- Maximum subinterfaces—To determine how many VLAN subinterfaces are allowed for your platform, see the [“Licensing Requirements for ASA 5510 and Higher Interfaces” section on page 10-8](#).
- Preventing untagged packets on the physical interface—If you use subinterfaces, you typically do not also want the physical interface to pass traffic, because the physical interface passes untagged packets. This property is also true for the active physical interface in a redundant interface pair.

Because the physical or redundant interface must be enabled for the subinterface to pass traffic, ensure that the physical or redundant interface does not pass traffic by not configuring a name for the interface. If you want to let the physical or redundant interface pass untagged packets, you can configure the name as usual. See [Chapter 17, “Completing Interface Configuration \(Routed Mode\),”](#) or [Chapter 18, “Completing Interface Configuration \(Transparent Mode, 8.4 and Later\),”](#) for more information about completing the interface configuration.

- (ASA 5512-X through ASA 5555-X) You cannot configure subinterfaces on the Management 0/0 interface.

## Prerequisites

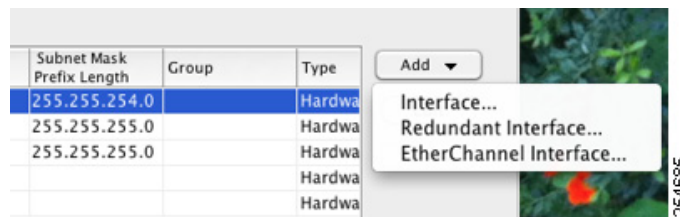
For multiple context mode, complete this procedure in the system execution space. If you are not already in the System configuration mode, in the Configuration > Device List pane, double-click **System** under the active device IP address.

## Detailed Steps

**Step 1** Depending on your context mode:

- For single mode, choose the **Configuration > Device Setup > Interfaces** pane.
- For multiple mode in the System execution space, choose the **Configuration > Context Management > Interfaces** pane.

**Step 2** Choose **Add > Interface**.



The Add Interface dialog box appears.

**Note**

In single mode, this procedure only covers a subset of the parameters on the Edit Interface dialog box; to configure other parameters, see [Chapter 17, “Completing Interface Configuration \(Routed Mode\),”](#) or [Chapter 18, “Completing Interface Configuration \(Transparent Mode, 8.4 and Later\).”](#) Note that in multiple context mode, before you complete your interface configuration, you need to allocate interfaces to contexts. See the [“Configuring Multiple Contexts”](#) section on page 5-15.

- Step 3** From the Hardware Port drop-down list, choose the physical, redundant, or port-channel interface to which you want to add the subinterface.
- Step 4** If the interface is not already enabled, check the **Enable Interface** check box.  
The interface is enabled by default. To disable it, uncheck the check box.
- Step 5** In the VLAN ID field, enter the VLAN ID between 1 and 4095.  
Some VLAN IDs might be reserved on connected switches, so check the switch documentation for more information. For multiple context mode, you can only set the VLAN in the system configuration.
- Step 6** In the Subinterface ID field, enter the subinterface ID as an integer between 1 and 4294967293.  
The number of subinterfaces allowed depends on your platform. You cannot change the ID after you set it.
- Step 7** (Optional) In the Description field, enter a description for this interface.  
The description can be up to 240 characters on a single line, without carriage returns. For multiple context mode, the system description is independent of the context description. In the case of a failover or state link, the description is fixed as “LAN Failover Interface,” “STATE Failover Interface,” or “LAN/STATE Failover Interface,” for example. You cannot edit this description. The fixed description overwrites any description you enter here if you make this interface a failover or state link.
- Step 8** Click **OK**.

You return to the Interfaces pane.

---

### What to Do Next

(Optional) Enable jumbo frame support according to the [“Enabling Jumbo Frame Support \(Supported Models\)”](#) section on page 10-37.

## Enabling Jumbo Frame Support (Supported Models)

A jumbo frame is an Ethernet packet larger than the standard maximum of 1518 bytes (including Layer 2 header and FCS), up to 9216 bytes. You can enable support for jumbo frames for all interfaces by increasing the amount of memory to process Ethernet frames. Assigning more memory for jumbo frames might limit the maximum use of other features, such as access lists.

Supported models include:

- ASA 5512-X
- ASA 5515-X
- ASA 5525-X
- ASA 5545-X
- ASA 5555-X
- ASA 5580
- ASA 5585-X

### Prerequisites

- In multiple context mode, set this option in the system execution space.
- Changes in this setting require you to reload the ASA.
- Be sure to set the MTU for each interface that needs to transmit jumbo frames to a higher value than the default 1500; for example, set the value to 9000. See the [“Configuring the MAC Address and MTU”](#) section on page 17-13. In multiple context mode, set the MTU within each context.

### Detailed Steps

- Multiple mode—To enable jumbo frame support, choose **Configuration > Context Management > Interfaces**, and click the **Enable jumbo frame support** check box.
- Single mode—Setting the MTU larger than 1500 bytes automatically enables jumbo frames. To manually enable or disable this setting, choose **Configuration > Device Setup > Interfaces**, and click the **Enable jumbo frame support** check box.

## Monitoring Interfaces

This section includes the following topics:

- [ARP Table, page 10-38](#)
- [MAC Address Table, page 10-38](#)

- [Interface Graphs, page 10-38](#)

## ARP Table

The Monitoring > Interfaces > ARP Table pane displays the ARP table, including static and dynamic entries. The ARP table includes entries that map a MAC address to an IP address for a given interface.

### Fields

- Interface—Lists the interface name associated with the mapping.
- IP Address—Shows the IP address.
- MAC Address—Shows the MAC address.
- Proxy ARP—Displays Yes if proxy ARP is enabled on the interface. Displays No if proxy ARP is not enabled on the interface.
- Clear—Clears the dynamic ARP table entries. Static entries are not cleared.
- Refresh—Refreshes the table with current information from the ASA and updates Last Updated date and time.
- Last Updated—*Display only*. Shows the date and time the display was updated.

## MAC Address Table

The Monitoring > Interfaces > MAC Address Table pane shows the static and dynamic MAC address entries. See the [“MAC Address Table” section on page 10-38](#) for more information about the MAC address table and adding static entries.

### Fields

- Interface—Shows the interface name associated with the entry.
- MAC Address—Shows the MAC address.
- Type—Shows if the entry is static or dynamic.
- Age—Shows the age of the entry, in minutes. To set the timeout, see the [“MAC Address Table” section on page 10-38](#).
- Refresh—Refreshes the table with current information from the ASA.

## Interface Graphs

The Monitoring > Interfaces > Interface Graphs pane lets you view interface statistics in graph or table form. If an interface is shared among contexts, the ASA shows only statistics for the current context. The number of statistics shown for a subinterface is a subset of the number of statistics shown for a physical interface.

### Fields

- Available Graphs for—Lists the types of statistics available for monitoring. You can choose up to four types of statistics to show in one graph window. You can open multiple graph windows at the same time.
  - Byte Counts—Shows the number of bytes input and output on the interface.

- Packet Counts—Shows the number of packets input and output on the interface.
- Packet Rates—Shows the rate of packets input and output on the interface.
- Bit Rates—Shows the bit rate for the input and output of the interface.
- Drop Packet Count—Shows the number of packets dropped on the interface.

These additional statistics display for physical interfaces:

- Buffer Resources—Shows the following statistics:

Overruns—The number of times that the ASA was incapable of handing received data to a hardware buffer because the input rate exceeded the ASA capability to handle the data.

Underruns—The number of times that the transmitter ran faster than the ASA could handle.

No Buffer—The number of received packets discarded because there was no buffer space in the main system. Compare this with the ignored count. Broadcast storms on Ethernet networks are often responsible for no input buffer events.

- Packet Errors—Shows the following statistics:

CRC—The number of Cyclical Redundancy Check errors. When a station sends a frame, it appends a CRC to the end of the frame. This CRC is generated from an algorithm based on the data in the frame. If the frame is altered between the source and destination, the ASA notes that the CRC does not match. A high number of CRCs is usually the result of collisions or a station transmitting bad data.

Frame—The number of frame errors. Bad frames include packets with an incorrect length or bad frame checksums. This error is usually the result of collisions or a malfunctioning Ethernet device.

Input Errors—The number of total input errors, including the other types listed here. Other input-related errors can also cause the input error count to increase, and some datagrams might have more than one error; therefore, this sum might exceed the number of errors listed for the other types.

Runts—The number of packets that are discarded because they are smaller than the minimum packet size, which is 64 bytes. Runts are usually caused by collisions. They might also be caused by poor wiring and electrical interference.

Giants—The number of packets that are discarded because they exceed the maximum packet size. For example, any Ethernet packet that is greater than 1518 bytes is considered a giant.

Deferred—For FastEthernet interfaces only. The number of frames that were deferred before transmission due to activity on the link.

- Miscellaneous—Shows statistics for received broadcasts.
- Collision Counts—For FastEthernet interfaces only. Shows the following statistics:

Output Errors—The number of frames not transmitted because the configured maximum number of collisions was exceeded. This counter should only increment during heavy network traffic.

Collisions—The number of messages retransmitted due to an Ethernet collision (single and multiple collisions). This usually occurs on an overextended LAN (Ethernet or transceiver cable too long, more than two repeaters between stations, or too many cascaded multiport transceivers). A packet that collides is counted only once by the output packets.

Late Collisions—The number of frames that were not transmitted because a collision occurred outside the normal collision window. A late collision is a collision that is detected late in the transmission of the packet. Normally, these should never happen. When two Ethernet hosts try to talk at once, they should collide early in the packet and both back off, or the second host

should see that the first one is talking and wait. If you get a late collision, a device is jumping in and trying to send the packet on the Ethernet while the ASA is partly finished sending the packet. The ASA does not resend the packet, because it may have freed the buffers that held the first part of the packet. This is not a real problem because networking protocols are designed to cope with collisions by resending packets. However, late collisions indicate a problem exists in your network. Common problems are large repeated networks and Ethernet networks running beyond the specification.

- Input Queue—Shows the number of packets in the input queue, the current and the maximum, including the following statistics:

Hardware Input Queue—The number of packets in the hardware queue.

Software Input Queue—The number of packets in the software queue.

- Output Queue—Shows the number of packets in the output queue, the current and the maximum, including the following statistics:

Hardware Output Queue—The number of packets in the hardware queue.

Software Output Queue—The number of packets in the software queue.

- Add—Adds the selected statistic type to the selected graph window.
- Remove—Removes the selected statistic type from the selected graph window. This button name changes to Delete if the item you are removing was added from another panel, and is not being returned to the Available Graphs pane.
- Show Graphs—Shows the graph window name to which you want to add a statistic type. If you have a graph window already open, a new graph window is listed by default. If you want to add a statistic type to an already open graph, choose the open graph window name. The statistics already included on the graph are shown in the Selected Graphs pane, to which you can add additional types. Graph windows are named for ASDM followed by the interface IP address and the name “Graph”. Subsequent graphs are named “Graph (2)” and so on.
- Selected Graphs—Shows the statistic types you want to show in the selected graph window. You can include up to four types.
  - Show Graphs—Shows the graph window or updates the graph with additional statistic types if added.

## Graph/Table

The Monitoring > Interfaces > Interface Graphs > Graph/Table window shows a graph for the selected statistics. The Graph window can show up to four graphs and tables at a time. By default, the graph or table displays the real-time statistics. If you enable History Metrics (see the [“Enabling History Metrics” section on page 4-35](#)), you can view statistics for past time periods.

### Fields

- View—Sets the time period for the graph or table. To view any time period other than real-time, enable History Metrics (see the [“Enabling History Metrics” section on page 4-35](#)). The data is updated according to the specification of the following options:
  - Real-time, data every 10 sec
  - Last 10 minutes, data every 10 sec
  - Last 60 minutes, data every 1 min
  - Last 12 hours, data every 12 min



- Last 5 days, data every 2 hours
- **Export**—Exports the graph in comma-separated value format. If there is more than one graph or table on the Graph window, the Export Graph Data dialog box appears. Choose one or more of the graphs and tables listed by checking the check box next to the name.
- **Print**—Prints the graph or table. If there is more than one graph or table on the Graph window, the Print Graph dialog box appears. Choose the graph or table you want to print from the Graph/Table Name list.
- **Bookmark**—Opens a browser window with a single link for all graphs and tables on the Graphs window, as well as individual links for each graph or table. You can then copy these URLs as bookmarks in your browser. ASDM does not have to be running when you open the URL for a graph; the browser launches ASDM and then displays the graph.

## Where to Go Next

- For multiple context mode:
  - a. Assign interfaces to contexts and automatically assign unique MAC addresses to context interfaces. See [Chapter 5, “Configuring Multiple Context Mode.”](#)
  - b. Complete the interface configuration according to [Chapter 17, “Completing Interface Configuration \(Routed Mode\),”](#) or [Chapter 18, “Completing Interface Configuration \(Transparent Mode, 8.4 and Later\).”](#)
- For single context mode, complete the interface configuration according to [Chapter 17, “Completing Interface Configuration \(Routed Mode\),”](#) or [Chapter 18, “Completing Interface Configuration \(Transparent Mode, 8.4 and Later\).”](#)

## Feature History for ASA 5510 and Higher Interfaces

Table 10-3 lists the release history for this feature.

**Table 10-3**      *Feature History for Interfaces*

| Feature Name  | Releases | Feature Information   |
|---|----------|---|
| Increased VLANs   | 7.0(5)   | Increased the following limits: <ul style="list-style-type: none"> <li>• ASA5510 Base license VLANs from 0 to 10.</li> <li>• ASA5510 Security Plus license VLANs from 10 to 25.</li> <li>• ASA5520 VLANs from 25 to 100.</li> <li>• ASA5540 VLANs from 100 to 200.</li> </ul> |
| Increased interfaces for the Base license on the ASA 5510 | 7.2(2)   | For the Base license on the ASA 5510, the maximum number of interfaces was increased from 3 plus a management interface to unlimited interfaces.  |
| Increased VLANs   | 7.2(2)   | VLAN limits were increased for the ASA 5510 (from 10 to 50 for the Base license, and from 25 to 100 for the Security Plus license), the ASA 5520 (from 100 to 150), the ASA 5550 (from 200 to 250).   |

**Table 10-3** Feature History for Interfaces (continued)

| Feature Name   | Releases      | Feature Information  |
|--|---------------|--|
| Gigabit Ethernet Support for the ASA 5510 Security Plus License                          | 7.2(3)        | The ASA 5510 ASA now supports GE (Gigabit Ethernet) for port 0 and 1 with the Security Plus license. If you upgrade the license from Base to Security Plus, the capacity of the external Ethernet0/0 and Ethernet0/1 ports increases from the original FE (Fast Ethernet) (100 Mbps) to GE (1000 Mbps). The interface names will remain Ethernet 0/0 and Ethernet 0/1.   |
| Jumbo packet support for the ASA 5580  | 8.1(1)        | <p>The Cisco ASA 5580 supports jumbo frames. A jumbo frame is an Ethernet packet larger than the standard maximum of 1518 bytes (including Layer 2 header and FCS), up to 9216 bytes. You can enable support for jumbo frames for all interfaces by increasing the amount of memory to process Ethernet frames. Assigning more memory for jumbo frames might limit the maximum use of other features, such as access lists.</p> <p>This feature is also supported on the ASA 5585-X.</p> <p>We modified the following screen: Configuration &gt; Device Setup &gt; Interfaces &gt; Add/Edit Interface &gt; Advanced.</p> |
| Increased VLANs for the ASA 5580   | 8.1(2)        | The number of VLANs supported on the ASA 5580 are increased from 100 to 250.   |
| Support for Pause Frames for Flow Control on the ASA 5580 10-Gigabit Ethernet Interfaces | 8.2(2)        | <p>You can now enable pause (XOFF) frames for flow control.</p> <p>This feature is also supported on the ASA 5585-X.</p> <p>We modified the following screens:</p> <p>(Single Mode) Configuration &gt; Device Setup &gt; Interfaces &gt; Add/Edit Interface &gt; General</p> <p>(Multiple Mode, System) Configuration &gt; Interfaces &gt; Add/Edit Interface.</p>   |
| Support for Pause Frames for Flow Control on 1-Gigabit Ethernet Interfaces               | 8.2(5)/8.4(2) | <p>You can now enable pause (XOFF) frames for flow control for 1-Gigabit interfaces on all models.</p> <p>We modified the following screens:</p> <p>(Single Mode) Configuration &gt; Device Setup &gt; Interfaces &gt; Add/Edit Interface &gt; General</p> <p>(Multiple Mode, System) Configuration &gt; Interfaces &gt; Add/Edit Interface.</p>   |
| EtherChannel support   | 8.4(1)        | <p>You can configure up to 48 802.3ad EtherChannels of eight active interfaces each.</p> <p>We modified or introduced the following screens:</p> <p>Configuration &gt; Device Setup &gt; Interfaces</p> <p>Configuration &gt; Device Setup &gt; Interfaces &gt; Add/Edit EtherChannel Interface</p> <p>Configuration &gt; Device Setup &gt; Interfaces &gt; Add/Edit Interface</p> <p>Configuration &gt; Device Setup &gt; EtherChannel</p> <p><b>Note</b> EtherChannel is not supported on the ASA 5505.</p>  |