

# Error Messages

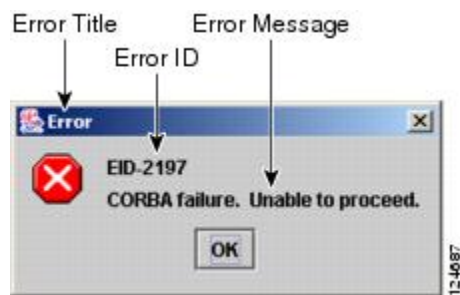


**Note**

The terms "Unidirectional Path Switched Ring" and "UPSR" may appear in Cisco literature. These terms do not refer to using Cisco ONS 15xxx products in a unidirectional path switched ring configuration. Rather, these terms, as well as "Path Protected Mesh Network" and "PPMN," refer generally to Cisco's path protection feature, which may be used in any topological network configuration. Cisco does not recommend using its path protection feature in any particular topological network configuration.

This chapter lists the error messages for the Cisco ONS 15454 Multi-Service Transport Platform (MSTP). The error dialog box in [Figure 1: Error Dialog Box, on page 1](#) consists of three parts: the error title, error ID, and error message.

**Figure 1: Error Dialog Box**



- [Error Messages Reference, page 1](#)

## Error Messages Reference

[Table 1: Error Messages, on page 2](#) gives a list of all error or warning message numbers, the messages, and a brief description of each message. The table lists two types of messages: error messages (EID-nnnn) and warning messages (WID-nnnn). Error messages are alerts that an unexpected or undesirable operation has occurred that either indicates the risk of loss of traffic or an inability to properly manage devices in the network. Warnings are alerts that the requested operation could lead to an error. Warnings are sometimes used to convey important information.

**Table 1: Error Messages**

| Error/Warning ID | Error/Warning Message   | Description   |
|------------------|---|---|
| EID-0            | Invalid error ID.   | The error ID is invalid.  |
| EID-1            | A null pointer encountered in {0}.  | Cisco Transport Controller (CTC) encountered a null pointer in the area described by the specified item.                                |
| EID-1000         | The host name of the network element cannot be resolved to an address.  | Refer to the error message text.  |
| EID-1001         | Unable to launch CTC due to applet security restrictions.<br><br>Please review the installation instructions to make sure that the CTC launcher is given the permissions it needs.<br><br>Note that you must exit and restart your browser in order for the new permissions to take effect. | Refer to the error message text.  |
| EID-1002         | The host name (e.g., for the network element) was successfully resolved to its address, but no route can be found through the network to reach the address.   | The node is not reachable from CTC client station.  |
| EID-1003         | An error was encountered while attempting to launch CTC. {0}  | Unexpected exception or error while launching CTC from the applet.  |
| EID-1004         | Problem Deleting CTC Cache: {0} {1}   | Unable to delete the CTC cached JARs, because another application may have the JAR files running; for example, another instance of CTC. |
| EID-1005         | An error occurred while writing to the {0} file.  | CTC encountered an error while writing to log files, preference files, etc.   |
| EID-1006         | The URL used to download {0} is malformed.  | The URL used to download the specified JAR file is incorrect.   |
| EID-1007         | An I/O error occurred while trying to download {0}.   | An input or output exception was encountered when CTC tried to download the specified JAR file.   |
| EID-1018         | Password shall not contain the associated user-ID.  | The password is invalid.  |
| EID-1019         | Could not create {0}. Please enter another filename.  | CTC could not create the file due to an invalid filename.   |

| Error/Warning ID | Error/Warning Message  | Description   |
|------------------|--|---|
| EID-1020         | Fatal exception occurred, exiting CTC. Unable to switch to the Network view.   | CTC was unable to switch from the node or card view to the network view and is now shutting down. |
| EID-1021         | Unable to navigate to {0}.   | CTC was unable to display the requested view (node or network).                                   |
| EID-1022         | An IOS session cannot be opened right now with this slot. Most likely someone else (using a different CTC) already has a session opened with this slot. Please try again later.  | Refer to the error message text.  |
| EID-1023         | This IOS session has been terminated. Terminations are caused when the session has timed out, the card resets, there is already a session with the slot, or password configuration is required.  | Refer to the error message text.  |
| EID-1025         | Unable to create Help Broker.  | CTC was unable to create the help broker for the online help.                                     |
| EID-1026         | Error found in the Help Set file.  | CTC encountered an error in the online help file.   |
| EID-1027         | Unable to locate help content for Help ID: "{0}".  | CTC was unable to locate the content for the help ID.   |
| EID-1028         | Error saving table. {0}  | There was an error while saving the specified table.  |
| EID-1031         | CTC cannot locate the online user manual files. The files may have been moved, deleted, or not installed. To install online user manuals, run the CTC installation wizard on the software or documentation CD.                                     | Refer to the error message text.  |
| EID-1032         | CTC cannot locate Acrobat Reader. If Acrobat Reader is not installed, you can install the Reader using the CTC installation wizard provided on the software or documentation CD.   | Refer to the error message text.  |
| EID-1035         | CTC experienced an I/O error while working with the log files. Usually this means that the computer has run out of disk space. This problem may or may not cause CTC to stop responding. Ending this CTC session is recommended, but not required. | Refer to the error message text.  |
| WID-1036         | WARNING: Deleting the CTC cache may cause any CTC running on this system to behave in an unexpected manner.  | Refer to the warning message text.  |

| Error/Warning ID | Error/Warning Message   | Description  |
|------------------|---|--|
| EID-1037         | Could not open {0}. Please enter another filename.  | Invalid file name. CTC is unable to open the specified file. Ensure that the file exists and the filename was typed correctly. |
| EID-1038         | The file {0} does not exist.  | The specified file does not exist.   |
| EID-1039         | The version of the browser applet does not match the version required by the network element. Please close and restart your browser in order to launch the Cisco Transport Controller.  | Refer to the error message text.   |
| WID-1041         | An error occurred while closing the {0} connection.   | CTC encountered an error while closing the specified connection.   |
| WID-1042         | You have selected Java version {0}. This version is outside of the recommended range and may cause an unpredictable behavior of the software. Do you wish to continue?  | Refer to the warning message text.   |
| EID-1043         | Error writing to file: {0}. This might be caused by a directory permission, quota or disk volume full issue.  | Check for possible causes and try again.   |
| WID-1044         | Warning: there is a discrepancy in the build timestamp between the NE cached jar file ({0}) and the NE ({1}). Your CTC jar cache should be emptied.   | Refer to the warning message text.   |
| EID-1046         | Selected CTC version ({0}) must be greater than or equal to the login NE version ({1}).   | The CTC software version must be greater than or equal to the software version on the node being managed.                      |
| EID-1047         | No additional Pseudo IOS windows may be opened at this time. The maximum number of Pseudo IOS windows are open.   | Refer to the error message text.   |
| EID-1048         | This Pseudo IOS connection has been terminated. Terminations are caused when the session has timed out, the node resets, or when the exit command has been invoked.<br><br>This may also occur when the maximum number of concurrent Pseudo IOS connections has been reached. | Refer to the error message text.   |
| EID-1049         | A Pseudo IOS connection cannot be opened right now on this node. Please try again later.  | Refer to the error message text.   |
| EID-2001         | No rolls were selected. {0}   | No rolls were selected for the bridge and roll.  |

| Error/Warning ID | Error/Warning Message  | Description   |
|------------------|--|---|
| EID-2002         | The roll must be completed or canceled before it can be deleted.   | You cannot delete the roll unless it has been completed or cancelled.   |
| EID-2003         | An error occurred while deleting the roll. {0}   | There was an error when CTC tried to delete the roll.   |
| EID-2004         | No Cisco IOS slot was selected.  | You did not select a Cisco IOS slot.  |
| EID-2005         | CTC cannot find the online help files for {0}. The files might have been moved, deleted, or not installed. To install online help, run the setup program on the software CD.             | CTC cannot find the online help files for the specified window. The files might have been moved, deleted, or not installed. To install online help, run the setup program on the software CD. |
| EID-2006         | An error occurred while editing the circuit(s). {0} {1}.   | An error occurred when CTC tried to open the circuit for editing.   |
| EID-2007         | The preferences could not be saved.  | CTC cannot save the preferences.  |
| EID-2008         | The circuit preferences could not be saved: {0}  | CTC cannot find the file needed to save the circuit preferences.  |
| EID-2009         | CTC was unable to download the package: {0}  | Refer to the error message text.  |
| EID-2010         | An error occurred while deleting the destination.  | CTC could not delete the destination.   |
| EID-2011         | The circuit could not be destroyed.  | CTC could not destroy the circuit.  |
| EID-2012         | The reverse circuit could not be destroyed.  | CTC could not reverse the circuit destroy.  |
| EID-2013         | The circuit creation failed. The circuit creation cannot proceed due to changes in the network which affected the circuit(s) being created. The dialog box will close. Please try again. | Refer to the error message text.  |
| EID-2014         | No circuit(s) were selected. {0}   | You must select a circuit to complete this function.  |
| EID-2015         | The circuit {0} cannot be deleted because it has one or more rolls.  | You must delete the rolls in the circuit before deleting the circuit itself.  |
| EID-2016         | The circuit deletion failed.   | CTC could not delete the tunnel as there are circuits that use the tunnel.  |
| EID-2017         | An error occurred while mapping the circuit. {0}   | There was an error mapping the circuit.   |

| Error/Warning ID | Error/Warning Message  | Description   |
|------------------|--|---|
| EID-2018         | The circuit roll failed. The circuit must be in the DISCOVERED state in order to perform a roll.                       | There was a failure in circuit roll. Change the circuit state to DISCOVERED and proceed.  |
| EID-2019         | The circuit roll failed. Bridge and roll is not supported on DWDM circuits.  | Refer to the error message text.  |
| EID-2020         | The circuit roll failed. The two circuits must have the same direction.  | Refer to the error message text.  |
| EID-2021         | The circuit roll failed. The two circuits must have the same size.   | Refer to the error message text.  |
| EID-2022         | The circuit roll failed. A maximum of two circuits can be selected for a bridge and roll operation.                    | Refer to the error message text.  |
| EID-2023         | CTC was unable to create a new user account.   | Refer to the error message text.  |
| EID-2024         | An error occurred during node selection.   | There was an error during node selection.   |
| EID-2025         | This feature cannot be used. Verify that each endpoint of this circuit is running software that supports this feature. | Refer to the error or warning message text. For example, this error is generated from the node view Provisioning> WDM-ANS> tabs to indicate that the selected ring type is not supported by the endpoints of the circuit. Another example is the Provisioning> VLAN tabs in card view (Ethernet card only), where it indicates that the back-end spanning tree protocol (STP) disabling is not supported. |
| EID-2026         | The {0} request could not be applied. {1}  | Error occurred while attempting to switch a path protection circuit away from a span.   |
| EID-2027         | An error occurred while deleting the circuit drop.   | CTC could not delete the circuit drop.  |
| EID-2028         | An error occurred while removing the circuit node.   | CTC could not remove the circuit node.  |
| EID-2029         | The requested operation is not supported.  | The task you are trying to complete is not supported by CTC.  |
| EID-2030         | An error occurred during provisioning.   | There was an error during provisioning.   |

| Error/Warning ID | Error/Warning Message   | Description  |
|------------------|---|--|
| EID-2031         | An error occurred while adding the node.  | There was an error while adding a node.  |
| EID-2032         | The circuit could not be renamed. {0}   | CTC could not rename the circuit.  |
| EID-2033         | An error occurred during validation. {0}  | There was an internal error while validating the user changes after the Apply button was pressed. This error can occur in the Edit Circuit dialog box or in the BLSR table in the shelf view (rare condition). |
| EID-2034         | Network circuits could not be added: {0}  | Refer to the error message text.   |
| EID-2035         | The source and destination nodes are not connected.   | Refer to the error message text.   |
| EID-2036         | The {0} cannot be deleted. LAN Access has been disabled on this node and this {0} is needed to access the node.   | You cannot delete the DCC/GCC link as it is needed to access the node.   |
| EID-2037         | The attribute for {0} cannot be found.  | CTC cannot find an attribute for the specified item.   |
| EID-2038         | The protection operation is invalid.  | The protection operation you tried to execute is invalid.  |
| EID-2040         | Please select a node first.   | You must select a node before performing the task.   |
| EID-2041         | No paths are available on this link. Please make another selection.   | You must select a link that has paths available.   |
| EID-2042         | This span is not selectable. Only the green spans with an arrow may be selected.  | Refer to the error message text.   |
| EID-2043         | This node is not selectable. Only the source node and nodes attached to included spans (blue) are selectable. Selecting a selectable node will enable its available outgoing spans. | Refer to the error message text.   |
| EID-2044         | This link may not be included in the required list. Constraints only apply to the primary path. Each node may have a maximum of one incoming signal and one outgoing link.          | You must select only one link going in and out of a node. Selecting more than one link is contradictory to the path selection algorithm.   |
| EID-2045         | This link may not be included in the required list. Only one outgoing link may be included for each node.   | Refer to the error message text.   |

| Error/Warning ID | Error/Warning Message   | Description   |
|------------------|---|---|
| EID-2047         | Please enter a valid value for the slot number.   | There was an error due to an invalid slot number.   |
| EID-2048         | Please enter a valid value for the port number.   | There was an error due to an invalid port number.   |
| EID-2050         | The new circuit could not be destroyed.   | CTC could not destroy the new circuit.  |
| EID-2051         | The circuit cannot be downgraded. {0}   | The specified circuit cannot be downgraded.   |
| EID-2052         | An error occurred during circuit processing.  | There was an error during the circuit processing.   |
| EID-2054         | An error occurred while selecting an endpoint.  | There was an error during the endpoint selection.   |
| EID-2055         | No endpoints are available for this selection. Please make another selection.           | This error occurs in the circuit creation dialog only during a race condition that has incorrectly allowed entities without endpoints to be displayed in the combination boxes. |
| EID-2056         | A communication error occurred: {0}   | An internal error occurred in Network Alarm tab while synchronizing alarms with the nodes.  |
| EID-2059         | An error occurred while deleting the node. {0}  | There was an error during the node deletion.  |
| EID-2060         | No PCA circuits were found.   | CTC could not find any protection channel access (PCA) circuits for this task.  |
| EID-2061         | An error occurred while provisioning the VLAN.  | There was an error defining the VLAN.   |
| EID-2062         | An error occurred while deleting VLANs. No VLAN(s) were selected. Please select a VLAN. | Refer to the error message text.  |
| EID-2063         | The default VLAN cannot be deleted.   | The selected VLAN is the default VLAN and cannot be deleted.  |
| EID-2064         | An error occurred while deleting VLANs. {0}   | There was an error deleting the specified VLAN.   |



| Error/Warning ID | Error/Warning Message   | Description   |
|------------------|---|---|
| EID-2065         | The profile cannot be imported. The profile "{0}" exists in the editor and the maximum number of copies (ten) exists in the editor. The import will be aborted. The profile has already been loaded eleven times. | Cannot import the profile because the profile has reached the maximum number of copies in the editor.       |
| EID-2066         | The profile could not be stored. An error occurred while writing to {0}.  | CTC encountered an error while trying to store the profile.   |
| EID-2067         | An error occurred while writing to the file. {0}  | CTC encountered an error while writing the specified file.  |
| EID-2068         | The alarm profile could not be loaded from the node.  | CTC encountered an error trying to load the alarm profile from the node.                                    |
| EID-2069         | The file could not be found or an I/O exception occurred. {0}   | Either the specified file was not found, or there was an input/output exception.                            |
| EID-2070         | The profile could not be deleted. {0}   | There was a failure in deleting the specified profile.  |
| EID-2071         | Only one column may be highlighted.   | You cannot select more than one column during clone action.   |
| EID-2072         | Only one profile may be highlighted.  | You cannot select more than one profile.  |
| EID-2073         | This column is permanent and cannot be removed.   | You cannot delete a permanent column.   |
| EID-2074         | Select one or more profiles.  | You have not selected any profile or column. Reset operation is done by right-clicking the selected column. |
| EID-2075         | This column is permanent and cannot be reset.   | A permanent column cannot be reset.   |
| EID-2077         | This column is permanent and cannot be renamed.   | You cannot rename a permanent column.   |
| EID-2078         | At least two columns must be highlighted.   | You cannot compare two profiles unless you select two columns.  |
| EID-2079         | The alarm types cannot be loaded into table. There are no reachable nodes from which the list of alarm types can be loaded. Please wait until such a node is reachable and try again.                             | Refer to the error message text.  |

| Error/Warning ID | Error/Warning Message   | Description  |
|------------------|---|--|
| EID-2080         | The node {0} has no profiles.   | The specified node does not have any profiles.                                   |
| EID-2081         | An error occurred while removing profile {0} from the node {1}.                     | There was an error while removing the specified profile from the specified node. |
| EID-2082         | The profile {0} does not exist on the node {1}.                                     | CTC cannot find the specified profile from the specified node.                   |
| EID-2083         | An error occurred while adding profile {0} to the node {1}.                         | There was an error adding the specified profile to the specified node.           |
| EID-2085         | The profile selection is invalid. No profiles were selected.                        | You tried to select an invalid profile. Select another profile.                  |
| EID-2086         | The node selection is invalid. No nodes were selected.                              | You tried to select an invalid node. Select another node.                        |
| EID-2087         | No profiles were selected. Please select at least one profile.                      | Refer to the error message text.   |
| EID-2088         | The profile name is invalid.  | The profile name cannot be empty.  |
| EID-2089         | Too many copies of {0} exist. Please choose another name.                           | Select a unique name.  |
| EID-2090         | No nodes were selected. Please select the node(s) on which to store the profile(s). | You must select one or more nodes on which you can store the profile.            |
| EID-2091         | Unable to switch to the node {0}.   | CTC is unable to switch to the specified node.                                   |
| EID-2092         | A general exception error occurred.   | CTC encountered a general exception error while trying to complete the task.     |
| EID-2093         | The name is too short. It does not have enough characters. {0}                      | The name must have a minimum of six characters.                                  |
| EID-2094         | The password and confirmed password fields do not match.                            | You must make sure the two fields have the same password.                        |
| EID-2095         | The password is invalid. {0}  | The password you entered is not allowed.   |
| EID-2096         | The user must have a security level.  | You must have an assigned security level to perform this task.                   |

| Error/Warning ID | Error/Warning Message  | Description  |
|------------------|--|--|
| EID-2097         | No user name was specified.  | You did not specify a user name.   |
| EID-2099         | An error occurred while ring switching.  | There was an error during the ring switch.   |
| EID-2100         | Please select at least one profile to delete.  | You have not selected the profile to delete.   |
| EID-2101         | An error occurred while protection switching.  | There was an error during the protection switching.  |
| EID-2102         | The forced switch could not be removed for some circuits. You must switch these circuits manually. | The forced switch could not be removed for some circuits. You must switch these circuits manually. |
| EID-2103         | An error occurred while upgrading the span.  | There was an error during the span upgrade.  |
| EID-2104         | The circuits cannot be switched back because one or both nodes are not reachable.                  | This error occurs during the path protection span upgrade procedure.                               |
| EID-2106         | The node name cannot be empty.   | You must supply a name for the node.   |
| EID-2107         | An error occurred while adding {0}. The host is unknown.   | There was an error adding the specified item.  |
| EID-2108         | {0} is already in the network.   | The specified item exists in the network.  |
| EID-2109         | The node is already in the current login group.  | The node you are trying to add is already present in the current login group.                      |
| EID-2110         | Please enter a number between 0 and {0}.   | You must enter a number in the range between 0 and the specified value.                            |
| EID-2111         | This node ID is already in use. Please choose another.   | Select a node ID that is not in use.   |
| EID-2113         | The extension byte for the ring cannot be set. {0}   | CTC cannot set the BLSR/MS-SPRing extension byte.  |
| EID-2114         | A card communication failure occurred during the operation.  | This error can occur during an attempt to apply a BLSR protection operation to a line.             |
| EID-2115         | An error occurred during the operation. {0}  | There was an error in applying the specified operation.  |

| Error/Warning ID | Error/Warning Message   | Description   |
|------------------|---|---|
| EID-2116         | The extension byte setting for the ring is invalid. {0}   | The extension byte set for the specified ring is invalid.   |
| EID-2118         | The ring cannot be deleted. A protection operation is set. All protection operations must be clear for ring to be deleted.  | Clear all the protection operations for the ring before deleting it.  |
| EID-2119         | {0} cannot be deleted because a protection switch is in effect. Please clear any protection operations, ensure that the reversion time is not "never" and allow any protection switches to clear before trying again.     | Clear all protection operations or switches before deleting the ring.   |
| EID-2120         | The following nodes could not be unprovisioned {0}<br>Therefore you will need to delete this {1} again later.   | The specified nodes could not be unprovisioned. Try deleting this BLSR or MS-SPRing later.  |
| EID-2121         | The ring cannot be upgraded. {0}  | CTC cannot upgrade the specified ring.  |
| EID-2122         | The ring speed for is inadequate for the upgrade procedure. Only {0} (or higher) {1} can be upgraded to four-fiber.   | You have selected an incorrect ring speed for upgrade. Only rings within the specified parameters can be upgraded to 4-fiber BLSR.  |
| EID-2123         | Verify that the following nodes have at least two in-service ports with the same speed as the two-fiber {0}. The ports cannot serve as timing references, and they cannot have DCC terminations or overhead circuits. {1} | Nonupgradable nodes. Verify that the specified nodes have at least two IS-NR ports with the same speed as the 2-fiber BLSR. The specified ports cannot serve as a timing reference, and they cannot have data communications channel (DCC) terminations or overhead circuits. |
| EID-2124         | You cannot add this span because it is connected to a node that already has the east and west ports defined.  | Refer to the error message text.  |
| EID-2125         | You cannot add this span as it would cause a single card to host both the east span and the west span. A card cannot protect itself.  | Refer to the error message text.  |
| EID-2126         | An error occurred while provisioning the OSPF area. {0}   | There is an Open Shortest Path First (OSPF) area error.   |

| Error/Warning ID | Error/Warning Message   | Description   |
|------------------|---|---|
| EID-2127         | You cannot add this span. It would cause the following circuit(s) to occupy different {0} regions on different spans: {1}<br><br>Either select a different span or delete the above circuit(s). | A circuit cannot occupy different STS regions on different spans. You may add a different span or delete the specified circuit.               |
| EID-2128         | The state is invalid.   | An internal error occurred while trying to remove a span from a BLSR.<br><br>This alarm occurs in the network-level BLSR creation dialog box. |
| EID-2129         | You cannot use same slot for east and west protect ports.   | Refer to the error message text.  |
| EID-2130         | The ring ID value, {0}, is not valid. Please enter a valid number between 0 and 9999.   | Enter a ring ID value between 0 and 9999.   |
| EID-2131         | The reversion cannot be set to INCONSISTENT.  | You must select another reversion type.   |
| EID-2135         | The overhead circuit preferences could not be stored: {0}   | Input/Output error. Unable to store overhead circuit preferences.   |
| EID-2137         | An error occurred during the circuit merge. {0}   | There was an error while merging the circuits.  |
| EID-2138         | Not all destinations could be deleted. Please try again.  | Refer to the error message text.  |
| EID-2139         | An error occurred while updating the destinations.  | There was an error in updating the circuit destinations.  |
| EID-2143         | No online help version was selected. The online help book cannot be deleted.  | Select the version of online help, and proceed.   |
| EID-2144         | An error occurred while deleting the online help book(s). {0}   | You cannot delete the specified online help.  |
| EID-2145         | No nodes appear to have a Cisco IOS card.   | Refer to error message.   |
| EID-2146         | This is a security violation. You may only logout of your own account.  | You cannot logout of an account other than your own.  |
| EID-2147         | This is a security violation. You may only change your own account.   | You cannot change an account other than your own.   |
| EID-2148         | This is a security violation. You cannot delete the account under which you are currently logged in.  | You cannot delete the account you are currently logged in.  |

| Error/Warning ID | Error/Warning Message   | Description  |
|------------------|---|--|
| WID-2149         | There is no exportable content in this view.  | Refer to the error message text.   |
| WID-2150         | The node {0} is not initialized. Please wait and try again.   | Wait till the specified node is initialized and try again.   |
| WID-2152         | Spanning tree protection is being disabled for this circuit.  | Refer to the warning message text.   |
| WID-2153         | Adding this drop will make the circuit a PCA circuit.   | Refer to the warning message text.   |
| WID-2154         | Monitor circuits cannot be created on a port grouping circuit.  | Refer to the warning message text.   |
| WID-2155         | Switch counts might not be fully supported on some nodes. {0}   | The specified nodes do not support switch counts completely.   |
| WID-2156         | The manual roll mode is recommended for dual rolls. For auto dual rolls, please verify that roll to facilities are in service and error-free. | Refer to the warning message text.   |
| WID-2157         | The roll(s) cannot be completed. {0}  | CTC could not complete the roll because the roll is destroyed, in an incomplete state, in a TL1_roll state, is cancelled, or is not ready to complete.   |
| EID-2158         | The roll mode is invalid. {0}   | There are two roll modes: auto and manual. For a one-way circuit source roll, the roll mode must be auto and for a one-way circuit destination roll, the roll mode must be manual.   |
| EID-2159         | The roll is not ready for completion. {0}   | The roll is not ready for completion.  |
| EID-2160         | The roll is not connected. {0}  | Refer to error message text.   |
| EID-2161         | The sibling roll is not complete. {0}   | One of the rolls is not completed for the dual roll. If it is auto roll, it will be completed when a valid signal is detected. If it is a manual roll, you must complete the roll from CTC if Bridge and Roll is operated from CTC, or from TL1 if Bridge and Roll is operated from TL1. |
| EID-2162         | An error occurred during roll acknowledgement. {0}  | Refer to the error message text.   |
| EID-2163         | The roll cannot be canceled. {0}  | CTC cannot cancel the roll.  |

| Error/Warning ID | Error/Warning Message  | Description   |
|------------------|--|---|
| EID-2164         | An error occurred during the roll. {0}   | CTC encountered a roll error.   |
| WID-2165         | The MAC address of the node {0} has been changed. All circuits originating from or dropping at this node will need to be repaired.   | Repair the circuits that originate from or drop at the specified node, with the new MAC address.  |
| WID-2166         | The node cannot be inserted into the domain because it is not initialized.   | Initialize the node and proceed.  |
| WID-2167         | You have insufficient security privileges to perform this action.  | You do not have the privilege to perform this action.   |
| WID-2168         | The following warnings surfaced while loading {0}. {1}   | CTC encountered warnings while loading the alarm profile import file.   |
| WID-2169         | One or more of the profiles selected do not exist on one or more of the nodes selected.  | The profile selected does not exist on the node. Select another profile.  |
| WID-2170         | The profile list on node {0} is full. Please delete one or more profiles if you wish to add the profile. {1}   | The number of profile that can exist on a node has reached the limit. To add a profile, delete any of the existing profiles.  |
| WID-2171         | You have been logged out. Click OK to exit CTC.  | Refer to the warning message text.  |
| WID-2172         | The CTC CORBA (IIOP) listener port setting of {0} will be applied on the next CTC restart.   | The Internet Inter-ORB Protocol (IIOP) listener port setting for the CTC Common Object Request Broker Architecture (CORBA) will be applied on the next CTC restart. |
| EID-2173         | The port is unavailable. The desired CTC CORBA ({0}) listener port, {1}, is already in use or you do not have permission to listen on it. Please select an alternate port.   | Select an alternate port, as the current port is either in use or you do not have enough permission on it.  |
| EID-2174         | An invalid number was entered. Please check it and try again.  | You entered an invalid firewall port number. Try again.   |
| WID-2175         | An extension byte mismatch occurred. {0}   | There is a mismatch with the extension byte.  |
| WID-2176         | Not all spans have the same OSPF area ID. This will cause problems with protection switching. To determine the OSPF area for a given span, click on the span and the OSPF area will be displayed in the pane to the left of the network map. | Refer to the warning message text.  |

| Error/Warning ID | Error/Warning Message   | Description  |
|------------------|---|--|
| WID-2178         | Only one edit pane can be opened at a time. The existing pane will be displayed.  | Refer to the warning message text.   |
| WID-2179         | No update is available because the circuit has been deleted.  | Refer to the warning message text.   |
| EID-2180         | The CTC initialization failed during step {0}.  | CTC initialization has failed in the specified step.   |
| EID-2181         | This link cannot be included because it originates from the destination.  | You must not include this link as it originates from destination of a circuit. It is against the path selection algorithm. |
| EID-2182         | The value of {0} is invalid.  | The value of the specified item is invalid.  |
| EID-2183         | The circuit roll failed. Bridge and roll is not supported on VCAT circuits.   | Refer to the error message text.   |
| EID-2184         | Spanning Tree Protocol cannot be enabled on some ports because the ports have been assigned an incompatible list of VLANs. You can view the VLAN/Spanning Tree table or reassign the Ethernet port VLANs. | Refer to the error message text.   |
| EID-2185         | The VLANs on some ports cannot be assigned because they are incompatible with the Spanning Tree Protocol. You can view the VLAN/Spanning Tree table or reassign the VLANs.                                | Refer to the error message text.   |
| EID-2186         | The software download failed on node {0}.   | The software could not be downloaded onto the specified node.  |
| EID-2187         | The ring name cannot exceed {0} characters. Please try again.   | You must shorten the length of the ring name.  |
| EID-2188         | The nodes in this ring do not support alphanumeric IDs. Please use a ring ID between {0} and {1}.   | The ring ID should not contain alphanumeric characters, and must be in the specified range.                                |
| EID-2189         | The TL1 keyword "all" cannot be used as the ring name. Please provide another name.   | Refer to the error message text.   |
| EID-2190         | Adding this span will cause the ring to contain more nodes than allowed.  | You have reached the maximum number of nodes allowed.  |
| EID-2191         | The ring name must not be empty.  | You must supply a ring name.   |



| Error/Warning ID | Error/Warning Message  | Description   |
|------------------|--|---|
| EID-2192         | A valid route cannot be found for the circuit creation request.  | CTC could not complete the circuit creation request either because there are no physical links, or the bandwidth of the available links are already reserved. |
| EID-2193         | A valid route cannot be found for the circuit drop creation request.   | Refer to the error message text.  |
| EID-2194         | A valid route cannot be found for the roll creation request.   | Refer to the error message text.  |
| EID-2195         | The circuit VLAN list cannot be mapped to one spanning tree. You can view the VLAN/Spanning Tree table or reassign VLANs.  | Refer to the error message text.  |
| EID-2196         | CTC cannot be relaunched. {0}  | There is an error relaunching CTC.  |
| EID-2197         | A CORBA failure occurred. CTC cannot proceed.  | There was a CORBA failure, and the task cannot proceed. Verify the Java version.  |
| EID-2198         | CTC is unable to switch to the {0} view.   | CTC is unable to switch to the specified view.  |
| EID-2199         | Login failed on {0} {1}  | The login failed on the specified tasks.  |
| EID-2200         | CTC has detected a jar file deletion. The jar file was used to manage one or more nodes. This CTC session will not be able to manage those nodes and they will appear gray on the network map. It is recommended that you exit this CTC session and start a new one. | Refer to the error message text.  |
| EID-2202         | An intra-node DRI circuit must have two sources.   | Intranode circuit must have two sources to be a dual ring interconnect (DRI).   |
| EID-2203         | No member was selected.  | You must select a member.   |
| EID-2204         | The number of circuits must be a positive integer.   | The number of circuits cannot be zero or negative.  |
| EID-2205         | The circuit type must be selected.   | You must select a circuit type.   |
| EID-2206         | The profile cannot be autoselected. Please select profile(s) to store and try again.   | Refer to the error message text.  |

| Error/Warning ID | Error/Warning Message  | Description  |
|------------------|--|--|
| EID-2207         | You cannot add this span. Either the ring name is too long (that is, ring name length is greater than {0}) or the endpoints do not support alphanumeric IDs. | Reduce the length of the ring name, or remove the alphanumeric characters from the end points.         |
| EID-2208         | This is an invalid or unsupported JRE.   | The version of Java Runtime Environment (JRE) is either invalid or unsupported.                        |
| EID-2209         | The user name must be at least {0} characters long.  | The user name must be at least of the specified character length.                                      |
| EID-2210         | No package name was selected.  | You must select a package name.  |
| EID-2211         | No node was selected for upgrade.  | You must select a node for the upgrade.  |
| EID-2212         | A protected line is not provisionable.   | The protected line cannot be provisioned. Choose another line.   |
| WID-2213         | The current type or state of some drops does not allow the new circuit state of {0} to be applied to them indirectly.  | The circuit state, specified by {0} cannot be applied to the selected drops.                           |
| EID-2214         | The node is disconnected. Please wait until the node reconnects.   | Refer to the error message text.   |
| EID-2215         | An error occurred while leaving the {0} page.  | There was an error while leaving the specified page.   |
| EID-2216         | An error occurred while entering the {0} page.   | There was an error while entering the specified page.  |
| EID-2217         | Some conditions could not be retrieved from the network view   | Refer to the error message text.   |
| EID-2218         | The bandwidth must be between {0} and {1} percent.   | The bandwidth must be within the specified parameters.   |
| EID-2219         | The protection operation failed. An XC loopback was applied on the cross-connection.   | As the protection operation failed, a cross-connect (XC) loopback will be applied on cross-connection. |
| EID-2220         | The tunnel status is PARTIAL. CTC is not able to change it. Please try again later.  | Refer to the error message text.   |
| EID-2221         | A valid route cannot be found for the unprotected to {0} upgrade request.  | Refer to the error message text.   |

| Error/Warning ID | Error/Warning Message   | Description   |
|------------------|---|---|
| EID-2222         | One or more of the following nodes are currently part of a four-fiber {0}. Only a single four-fiber {0} is supported per node. {1}  | The nodes, specified by {1}, are already part of a 4-fiber BLSR/MS-SPRing type (specified by {0}).              |
| EID-2223         | Only one circuit can be upgraded at a time.   | Refer to the error message text.  |
| EID-2224         | This link may not be included because it terminates on the source.  | Refer to the error message text.  |
| EID-2225         | A valid signal could not be detected while trying to complete the roll. {0}   | Roll can be completed only when a valid signal is detected. If not, the roll completion may result in an error. |
| EID-2226         | The circuit roll failed. {0}  | Refer to the error message text.  |
| EID-2320         | This VCAT circuit does not support deletion of its member circuits.   | You can not delete a circuit that is a member of VCAT circuit.  |
| EID-2321         | An error occurred while deleting member circuits. {0}   | Refer to the error message text.  |
| WID-2322         | Not all cross-connects from selected circuits could be merged into the current circuit. They might appear as partial circuits.  | Refer to the warning message text.  |
| EID-2323         | The circuit roll failed. Bridge and roll is not supported on monitor circuits.  | A monitor circuit does not support Bridge and Roll.   |
| EID-2324         | An error occurred during the circuit upgrade. {0}   | Refer to the error message text.  |
| EID-2325         | You have failed {0} times to unlock this session. CTC will exit after you click OK or close this dialog box.  | The maximum amount of attempts to unlock this session has been reached.   |
| WID-2326         | Currently, CTC does not support bridge and roll on circuits that are entirely created by TL1. To continue with bridge and roll in CTC, the selected circuits must be upgraded. Is it OK to upgrade the selected circuits and continue the bridge and roll operation?  | Refer to the warning message text.  |
| WID-2327         | Currently, CTC does not support bridge and roll on circuits that are partially created by TL1. To continue with bridge and roll in CTC, the selected circuits must be upgraded. Is it OK to upgrade the selected circuits and continue the bridge and roll operation? | Refer to the warning message text.  |
| EID-2328         | An error occurred during the circuit reconfiguration. {0}   | The attempt to reconfigure the specified circuit has failed.  |

| Error/Warning ID | Error/Warning Message  | Description  |
|------------------|--|--|
| EID-2329         | {0} of {1} circuits could not be successfully created.   | A few circuits could not be created.   |
| EID-2330         | An error occurred during circuit verification. The selected {0} is invalid! {1}  | The selected item, specified by {0}, is invalid as per the details, specified in {1}.                                  |
| EID-2331         | Deleting {0} might be service affecting.   | Deleting the item can affect the service of CTC.   |
| EID-2332         | A validation error occurred in row {0}. {1} hold-off timer for {2} must be between {3}-10,000 ms, in steps of 100 ms.          | Refer to the error message text.   |
| EID-2333         | The SSLIOP port cannot have the same port value as IIOOP port. Please change it and apply again.                               | Refer to the error message text.   |
| EID-3001         | An Ethernet RMON threshold with the same parameters already exists. Please change one or more of the parameters and try again. | Change a few parameters in an Ethernet remote monitoring (RMON) threshold and try again.                               |
| EID-3002         | An error occurred while retrieving defaults from the node: {0}   | There was an error while retrieving the defaults from the specified node.  |
| EID-3003         | The file {0} cannot be loaded.   | CTC cannot load the specified file.  |
| EID-3004         | Properties cannot be loaded from the node.   | Refer to the error message text.   |
| EID-3005         | NE update properties cannot be saved to the file {0}.  | CTC cannot save the network element (NE) update values to the specified file.  |
| EID-3006         | NE update properties cannot be loaded from the node.   | Refer to the error message text.   |
| EID-3007         | An error occurred while provisioning the {0}.  | There was a provisioning error for the specified item.   |
| EID-3008         | This is not a valid card.  | You cannot perform DWDM automatic node setup (ANS) from the Card view. Please navigate to the Node view and try again. |
| EID-3009         | No {0} was selected.   | Select the specified item, for example, VLAN, port, slot, etc.   |
| EID-3010         | A bidirectional optical link could not be created.   | Refer to the error message text.   |
| EID-3016         | The subnet address is invalid.   | Refer to the error message text.   |

| Error/Warning ID | Error/Warning Message  | Description   |
|------------------|--|---|
| EID-3017         | The subnet address already exists.   | Refer to the error message text.  |
| EID-3019         | The internal subnet address is incomplete.   | Enter the complete internal subnet address.   |
| EID-3020         | The subnet address cannot be the same for both TSC cards. The requested action is not allowed.   | A node internal subnet must be different from one another as each TSC is on separate ethernet buses, isolated by broadcast domains.                           |
| EID-3021         | An error occurred while retrieving the diagnostics: {0}  | Refer to the error message text.  |
| EID-3022         | The requested action is not allowed.   | The requested action is not allowed.  |
| EID-3023         | The low order cross-connect mode could not be retrieved.   | Refer to the error message text.  |
| EID-3024         | The {0} cross-connect mode could not be switched. Please verify that the type and/or number of circuits provisioned does not exceed the criterion for switching modes. | CTC cannot switch the cross-connect mode for the specified item, as the type or the number of circuits does not match with the criterion for switching modes. |
| EID-3025         | An error occurred while retrieving thresholds.   | There was an error retrieving the thresholds.   |
| EID-3026         | The send DoNotUse attribute cannot be modified.  | You cannot modify the Send DoNotUse field.  |
| EID-3027         | The SyncMsg attribute cannot be modified.  | You cannot modify the SyncMsg field.  |
| EID-3028         | The port type cannot be changed.   | You cannot change the port type.  |
| EID-3029         | Unable to switch to the byte because an overhead change is present on this byte of the port.   | Refer to the error message text.  |
| EID-3031         | An error occurred while hard-resetting the card.   | There was an error while resetting card hardware.   |
| EID-3032         | An error occurred while resetting the card.  | There was an error while resetting the card.  |
| EID-3033         | The lamp test is not supported on this shelf.  | Refer to the error message text.  |
| EID-3035         | The cross-connect diagnostics cannot be performed  | Refer to the error message text.  |

| Error/Warning ID | Error/Warning Message  | Description   |
|------------------|--|---|
| EID-3036         | The cross-connect diagnostics test is not supported on this shelf.   | The cross-connect diagnostics test is not supported on this shelf.  |
| EID-3039         | An error occurred while changing the card type.  | There was an error while changing the card.   |
| EID-3040         | The card type is invalid.  | The selected card type is invalid.  |
| EID-3041         | An error occurred while applying changes.  | CTC is unable to create a protection group. Check if the protect port supports circuits, a timing reference, SONET SDCC, orderwire, or a test access point. |
| EID-3042         | The flow control low value must be less than the flow control high value for all ports in the card.                                | Refer to the error message text.  |
| EID-3046         | The flow control watermark value must be between {0} and {1}, inclusive.   | The flow control watermark value must be between the two specified values.  |
| EID-3047         | The file {0} could not be read. Please verify the name and try again.  | Refer to the error message text.  |
| EID-3048         | There is no Cisco IOS startup configuration file available to download.  | CTC could not find the configuration file for IOS startup.  |
| EID-3049         | The download cannot be done at this time because an update in progress.  | Refer to the error message text.  |
| EID-3050         | An error occurred while trying to save the file to your local file system.   | Check whether the file already exists and cannot be over written, or there is a space constraint in the file system.  |
| EID-3051         | The configuration file has a maximum size of {0} bytes.  | The size of the configuration file should not exceed the specified number of bytes.   |
| EID-3052         | An error occurred while saving the configuration file to the TCC2/TCC2P.   | Refer to the error message text.  |
| EID-3053         | The value of {0} must be between {1} and {2}.  | The value of the item must be between the specified values.   |
| EID-3054         | The provisioned input/output ports cannot be removed or another user is updating the card. Please try to remove these ports later. | Another user may be updating the card. You can try again later.   |

| Error/Warning ID | Error/Warning Message  | Description  |
|------------------|--|--|
| EID-3055         | The soak maintenance pane cannot be created.   | Refer to the error message text.   |
| EID-3056         | Defaults cannot be saved to the file {0}.  | CTC cannot save the defaults to the specified file.  |
| EID-3057         | Default properties cannot be loaded from the node.   | Refer to the error message text.   |
| EID-3058         | The file {0} does not exist.   | Refer to the error message text.   |
| EID-3059         | An error occurred while refreshing.  | There was an error while refreshing.   |
| EID-3060         | The ALS recovery pulse interval must be between {0} seconds and {1} seconds.   | The automatic laser shutdown (ALS) Recovery Interval must be between the specified range of seconds.       |
| EID-3061         | The ALS recovery pulse duration must be between {0} seconds and {1} seconds.   | The automatic laser shutdown (ALS) Recovery Duration must be between the specified range of seconds.       |
| EID-3062         | An error occurred while setting values in the table.   | Refer to the error message text.   |
| EID-3064         | This is not a G1000 card.  | This card is not a G1000-4 card.   |
| EID-3065         | An error occurred while attempting to create this RMON threshold: {0}  | You must wait some time before you try again.  |
| EID-3066         | The sample period must be between 10 and {0}.  | Refer to the error message text.   |
| EID-3067         | The rising threshold must be between 1 and {0}.  | This is an invalid rising threshold entry. The valid range is from 1 to the specified value.               |
| EID-3068         | The falling threshold must be between 1 and {0}.   | This is an invalid falling threshold entry. The valid range is from 1 to the specified value.              |
| EID-3069         | The rising threshold must be greater than or equal to the falling threshold.   | Refer to the error message text.   |
| EID-3070         | Error in data for ports {0} Exactly one VLAN must be marked untagged for each port. These changes will not be applied. | CTC encountered data error for the specified ports. Only one VLAN should be marked untagged for each port. |
| EID-3071         | An error occurred while retrieving the learned address list.   | Unable to retrieve the learned MAC address from the NE.  |

| Error/Warning ID | Error/Warning Message  | Description   |
|------------------|--|---|
| EID-3072         | An error occurred while clearing the learned address.                  | Failure attempting to clear the learned MAC address from a specific card or Ether group.                                  |
| EID-3073         | An error occurred while clearing the selected rows.                    | Failure attempting to clear the learned MAC address from a specific card or Ether group.                                  |
| EID-3074         | An error occurred while clearing the learned address list by {0}.      | Error encountered trying to clear the learned MAC address from either a VLAN or a port.                                   |
| EID-3075         | At least one row in the parameter column must be selected.             | Refer to the error message text.  |
| EID-3076         | CTC lost its connection with this node. The NE Setup Wizard will exit. | Refer to the error message text.  |
| EID-3077         | No optical link was selected.  | Refer to the error message text.  |
| EID-3078         | An optical link could not be created.                                  | Refer to the error message text.  |
| EID-3079         | Defaults cannot be applied to the node. {0}                            | CTC cannot apply the defaults to the specified node.  |
| EID-3080         | CTC cannot navigate to the target tab. {0}                             | CTC cannot go to the specified target tab.  |
| EID-3081         | The port type cannot be changed.                                       | Refer to the error message text.  |
| EID-3082         | The {0} extension byte cannot be changed.                              | You cannot modify the specified extension byte.   |
| EID-3084         | An error occurred while retrieving laser parameters for {0}.           | There is no card, or there was an internal communications error when attempting to get the laser parameters for the card. |
| EID-3085         | No OSC Terminations were selected                                      | Select an OSC termination and proceed.  |
| EID-3086         | One or more Osc terminations could not be created.                     | Refer to the error message text.  |
| EID-3087         | The OSC termination could not be edited.                               | Refer to the error message text.  |
| EID-3088         | No {0} card is present to switch.                                      | No card of the specified type is available to switch.   |



| Error/Warning ID | Error/Warning Message   | Description  |
|------------------|---|--|
| EID-3089         | The {0} state cannot be used or changed when the {1} has failed or is missing.  | You cannot use or change the specified state when the card is failed or missing.                                 |
| EID-3090         | The operation cannot be performed because the {0} is {1} LOCKED_ON/LOCKED_OUT.  | You cannot perform operation.  |
| EID-3091         | The operation cannot be performed because the protect card is active.   | Refer to the error message text.   |
| EID-3092         | The requested action cannot be applied because the service state is invalid.  | Select another service state and proceed.  |
| EID-3093         | The operation cannot be performed because the duplex pair is {0}locked.   | Refer to the error message text.   |
| EID-3094         | The operation cannot be performed because no cross-connect redundancy is available.   | You cannot perform the requested operation on the cross connect card without having a backup cross connect card. |
| EID-3095         | The deletion failed because the circuit is in use   | Refer to the error message text.   |
| WID-3096         | An internal communication error was encountered while retrieving laser parameters. This can happen when equipment is not present or when equipment is resetting. Check the equipment state and try to refresh the values again. | Refer to the warning message text.   |
| EID-3097         | The ring termination is in use.   | The ring termination you are trying to access is in use. Try after sometime.                                     |
| EID-3098         | No ring terminations were selected.   | Select one of the ring terminations.   |
| EID-3099         | The entered key does not match the existing authentication key.   | Check the authentication key and reenter.  |
| EID-3100         | An error occurred during authentication.  | There was an error in authentication. Verify that the key does not exceed the character limit.                   |
| EID-3101         | The DCC metric must be between 1 and 65535.   | The DCC metric should be in the range of 1 to 65535.   |
| EID-3102         | The DCC metric is invalid.  | There was an invalid DCC metric.   |
| EID-3103         | The IP address {0} is invalid}.   | The IP address is invalid.   |

| Error/Warning ID | Error/Warning Message   | Description   |
|------------------|---|---|
| EID-3104         | The router priority must be between 0 and 255.  | The router priority should be in the range of 0 to 255.   |
| EID-3105         | The router priority is invalid.   | The router priority is invalid.   |
| EID-3106         | The hello interval must be between 1 and 65535.   | The hello interval should be in the range of 1 to 65535.  |
| EID-3107         | The hello interval is invalid.  | The hello interval is invalid.  |
| EID-3109         | The dead interval must be between 1 and 2147483647.   | The dead interval value must be between 1 and 2147483647.   |
| EID-3110         | The dead interval must be larger than the hello interval.   | Refer to the error message text.  |
| EID-3111         | The LAN transmit delay must be between 1 and 3600 seconds.  | The LAN transit delay should be in the range of 1 to 3600 seconds.  |
| EID-3112         | The transmit delay is invalid.  | The transmit delay is invalid.  |
| EID-3113         | The retransmit interval must be between 1 and 3600 seconds.   | The retransmit interval should be in the range of 1 to 3600 seconds.  |
| EID-3114         | The retransmit interval is invalid.   | The retransmit interval is invalid.   |
| EID-3115         | The LAN metric must be between 1 and 65535.   | The LAN metric should be in the range of 1 to 65535.  |
| EID-3116         | The LAN metric is invalid.  | The LAN metric is invalid.  |
| EID-3117         | If OSPF is active on the LAN, no DCC area IDs may be 0.0.0.0. Please change all DCC area IDs to non-0.0.0.0 values before enabling OSPF on the LAN. | Refer to the error message text.  |
| EID-3118         | If OSPF is active on the LAN, the LAN area ID cannot be the same as the DCC area ID.  | LAN must be part of a different OSPF area other than the DCC network.   |
| EID-3119         | An error occurred during validation.  | CTC was unable to validate the values entered by the user. This error message is common to several different provisioning tabs within CTC (examples include the SNMP provisioning tab, the General> Network provisioning tab, the Security > Configuration provisioning tab, etc.). |

| Error/Warning ID | Error/Warning Message  | Description   |
|------------------|--|---|
| EID-3120         | No object of type {0} was selected for deletion.   | Choose an object of the specified type to delete.                               |
| EID-3121         | An error occurred while deleting {0}.  | There is an error deleting the item.  |
| EID-3122         | No object of type {0} was selected to edit.  | Choose an object of the specified type to edit.                                 |
| EID-3123         | An error occurred while editing {0}.   | There was an error editing the item.  |
| EID-3124         | The {0} termination is in use. Delete the associated OSPF range table entry and try again. | Refer to the error message text.  |
| EID-3125         | No {0} terminations were selected.   | No specified terminations are selected.   |
| EID-3126         | The {0} termination could not be edited.   | CTC could not edit the specified termination.                                   |
| EID-3127         | Orderwire cannot be provisioned because the E2 byte is in use by {0}.                      | Refer to the error message text.  |
| EID-3128         | The authentication key cannot exceed {0} characters.                                       | The authentication key cannot exceed the specified number of characters.        |
| EID-3129         | The authentication keys do not match!  | Refer to the error message text.  |
| EID-3130         | An error occurred while creating the OSPF area virtual link.                               | CTC encountered an error while creating the area virtual link.                  |
| EID-3131         | An error occurred while creating the OSPF virtual link.                                    | CTC encountered an error creating the virtual link.                             |
| EID-3132         | An error occurred while setting the OSPF area range: {0}, {1}, false.                      | CTC encountered an error while setting the area range for the specified values. |
| EID-3133         | The maximum number of OSPF area ranges has been exceeded.                                  | OSPF area ranges exceeded the maximum number.                                   |
| EID-3134         | The area ID is invalid. Use the DCC OSPF area ID, LAN port area ID, or 0.0.0.0.            | Refer to the error message text.  |
| EID-3135         | The mask is invalid.   | Refer to the error message text.  |
| EID-3136         | The range address is invalid.  | The range address is invalid. Try again.  |

| Error/Warning ID | Error/Warning Message   | Description   |
|------------------|---|---|
| EID-3137         | Your request has been denied because the timing source information was updated while your changes were still pending. Please retry. | Refer to the error message text.  |
| EID-3138         | The clock source for switching is invalid.  | You have selected an invalid clock source. Choose another clock.                              |
| EID-3139         | A switch cannot be made to a reference of inferior quality.   | Refer to the error message text.  |
| EID-3140         | A higher priority switch is already active.   | You cannot switch the timing source manually when a higher priority switch is already active. |
| EID-3141         | An attempt was made to access a bad reference.  | Refer to the error message text.  |
| EID-3142         | No switch is active.  | None of the switches are active.  |
| EID-3143         | An error occurred while creating the static route entry.  | CTC encountered an error while a creating static route entry.                                 |
| EID-3144         | The maximum number of static routes has been exceeded.  | The number of static routes has exceeded its limit.   |
| EID-3145         | The RIP metric must be between 1 and 15.  | The Routing Information Protocol (RIP) metric should be in the range of 1 to 15.              |
| EID-3146         | The RIP metric is invalid.  | Refer to the error message text.  |
| EID-3147         | An error occurred while creating the summary address.   | There was an error while creating the summary address.  |
| EID-3148         | No Layer 2 domain has been provisioned.   | You must provision any one of the layer 2 domain.   |
| EID-3149         | The MAC addresses could not be retrieved.   | Refer to the error message text.  |
| EID-3150         | The target file {0} is not a normal file.   | The specified target file is not a normal file.   |
| EID-3151         | The target file {0} is not writable.  | The target file is not writeable. Specify another file.                                       |
| EID-3152         | An error occurred while creating the protection group.  | CTC encountered an error creating Protection Group.   |
| EID-3153         | The card cannot be deleted because it is in use.  | Refer to the error message text.  |

| Error/Warning ID | Error/Warning Message  | Description   |
|------------------|--|---|
| EID-3154         | An error occurred while provisioning the card: CTC cannot {0} the card.  | CTC cannot perform the task on the card.  |
| EID-3155         | An error occurred while building the menu.   | CTC encountered an error building the menu.   |
| EID-3156         | An error occurred while building the menu. Cards were not found for the {0} group.   | CTC encountered an error while building the menu, as cards could not be found for the specified group).   |
| EID-3157         | The selected model could not be set because of an unexpected model class: {0}.   | CTC encountered an unexpected model class while trying to complete the task.  |
| EID-3159         | An error occurred while applying the operation.  | CTC encountered an error while applying this operation.<br><br>EID-3159 can appear if you attempt to perform another switching operation within a certain time interval. This interval is an algorithm of three seconds per working card in the protection group. The maximum interval is 10 seconds. |
| EID-3160         | An error occurred while provisioning the {0}.  | CTC encountered the specified error.  |
| EID-3161         | An error occurred while upgrading the ring.  | An error was encountered while attempting to upgrade the BLSR. Refer to the details portion of the error dialog box for more information.   |
| EID-3162         | This protection operation cannot be set because the protection operation on the other side has been changed but not yet applied. | Refer to the error message text.  |
| EID-3163         | The data in row {0} cannot be validated.   | CTC cannot validate the data for the specified row.   |
| EID-3164         | The new node ID ({0}) for ring ID {1} duplicates the ID of node {2}.   | The new specified node ID for the specified ring ID is the same as another node ID.   |
| EID-3165         | The ring ID provided is already in use. Ring IDs must be unique.   | Refer to the error message text.  |
| EID-3166         | An error occurred while refreshing the {0} table.  | CTC encountered an error while refreshing the specified table.  |

| Error/Warning ID | Error/Warning Message   | Description  |
|------------------|---|--|
| EID-3167         | The slot is already in use.   | Refer to the error message text.   |
| EID-3168         | An error occurred while provisioning.                                 | An error was encountered while attempting the specified provisioning operation. Refer to the details portion of the error dialog box for more information. |
| EID-3169         | An error occurred while adding the card.                              | CTC encountered an error while adding the card.  |
| EID-3170         | You cannot delete this card: {0}.                                     | Refer to the error message text.   |
| EID-3171         | An error occurred while creating the trap destination.                | CTC encountered an error creating the trap destination.  |
| EID-3172         | No RMON thresholds were selected.                                     | Select an RMON threshold.  |
| EID-3173         | The contact "{0}" cannot exceed {1} characters.                       | The specified contact exceeds the specified character limit.   |
| EID-3174         | The description "{0}" cannot exceed {1} characters.                   | The specified location exceeds the specified character limit.  |
| EID-3175         | The operator identifier "{0}" cannot exceed {1} characters.           | The specified operator identifier exceeds the specified character limit.   |
| EID-3176         | The operator specific information "{0}" cannot exceed {1} characters. | The specified operator specific information exceeds the specified character limit.   |
| EID-3177         | The node name cannot be empty.  | The specified name is empty.   |
| EID-3178         | The node name "{0}" cannot exceed {1} characters.                     | The specified name exceeds the specified character limit.  |
| EID-3179         | The protect card is in use.   | Refer to the error message text.   |
| EID-3180         | The 1+1 protection group does not exist.                              | Create a 1+1 protection group.   |
| EID-3181         | The Y-cable protection group does not exist.                          | Refer to the error message text.   |
| EID-3182         | The topology element is in use and cannot be deleted as requested.    | You cannot delete the topology element which is in use.  |
| EID-3183         | An error occurred while deleting the protection group.                | CTC encountered an error while deleting the protection group.  |

| Error/Warning ID | Error/Warning Message   | Description  |
|------------------|---|--|
| EID-3184         | No {0} was selected.  | You must select an item before completing this task.   |
| EID-3185         | This ring has an active protection switch operation and cannot be deleted at this time. | Refer to the error message text.   |
| EID-3186         | The node is busy: {0} is {1} and cannot be deleted as requested.                        | The request cannot be completed.   |
| EID-3187         | An error occurred while deleting the trap destination.                                  | CTC encountered an error deleting the trap destination.  |
| EID-3188         | An error occurred during authentication. The password entered is invalid.               | The password you entered is invalid. Enter the password again.   |
| EID-3189         | The sum of the {0} must be between {1} and {2}.   | Refer to the error message text.   |
| EID-3214         | The number of high order circuits for the line could not be retrieved.                  | The number of High Orders (STS/STM) for the line is not available.   |
| EID-3215         | An error occurred while refreshing.   | Used frequently in pane classes to indicate a general error condition when trying to refresh from the model. |
| EID-3216         | The proxy port is invalid.  | Refer to the error message text.   |
| EID-3217         | The statistics could not be refreshed.  | CTC could not refresh statistics values.   |
| EID-3218         | The automatic node setup could not be launched.   | Refer to the error message text.   |
| EID-3219         | The automatic node setup information could not be refreshed.                            | Failure trying to retrieve automatic node setup information.   |
| EID-3220         | An error occurred while refreshing row {0}.   | Error refreshing the specified row.  |
| EID-3222         | The statistics could not be cleared.  | Refer to the error message text.   |
| EID-3225         | An error occurred while refreshing the pane.  | Used frequently in pane classes to indicate a general error condition when trying to refresh from the model. |
| EID-3226         | The {0} termination(s) could not be deleted. {1}  | Refer to the error message text.   |
| EID-3227         | A baseline could not be recorded. Performance metrics will remain unchanged.            | CTC failed to set the baseline values while provisioning NE. Previous values remain unchanged.               |

| Error/Warning ID | Error/Warning Message   | Description  |
|------------------|---|--|
| EID-3228         | The {0} termination(s) could not be created. {1}  | Refer to the error message text.   |
| EID-3229         | RIP is active on the LAN. Please disable RIP before enabling OSPF.  | Turn off the Routing Information Protocol (RIP) on the LAN, before enabling OSPF.  |
| EID-3230         | OSPF is active on the LAN. Please disable OSPF before enabling RIP.   | Turn off the OSPF on the LAN before enabling RIP.  |
| EID-3231         | An error occurred while setting the OPR.  | An error was encountered while attempting to provision the optical power received (OPR).   |
| WID-3232         | The port state cannot be indirectly transitioned because the port is still providing services. If the port state should be changed, edit it directly through port provisioning. | Edit the port state while provisioning the port.   |
| EID-3233         | The current loopback provisioning does not allow this state transition.   | Refer to the error message text.   |
| EID-3234         | The current synchronization provisioning does not allow this state transition.  | You cannot transition the port state to the target date while in the current synchronization state.  |
| EID-3235         | The requested state transition cannot be performed on this software version.  | Refer to the error message text.   |
| EID-3236         | The database restore failed. {0}  | CTC failed to restore the specified database.  |
| EID-3237         | The database backup failed. {0}   | CTC failed to backup the specified database.   |
| EID-3238         | The send PDIP setting on {0} is inconsistent with the setting on the control node {1}.  | The send payload defect indicator path (PDI-P) setting on the specified item should be consistent with that of the specified control node. |
| EID-3239         | The overhead termination is invalid   | Refer to the error message text.   |
| EID-3240         | The maximum number of overhead terminations has been exceeded.  | Overhead terminations have exceeded the limit.   |
| EID-3241         | The {0} termination port is in use.   | The specified termination port is in use. Select another port.   |



| Error/Warning ID | Error/Warning Message  | Description   |
|------------------|--|---|
| EID-3242         | An {1} exists on the selected ports. Therefore, you must create the {0}s one by one.   | The specified DCC already exists on the selected port. You can create a DCC of another type.  |
| WID-3243         | The port you have chosen as an {0} endpoint already supports an {1}. The port cannot support both DCCs. After the {0} is created, verify that no EOC alarms are present and then delete the {1} to complete the downgrade. | The same port can not be used by multiple DCCs.   |
| EID-3244         | An {0} exists on the selected ports. Therefore, you must create the {1}s one by one.   | The specified DCC already exists on the selected port. You can create a DCC of another type.  |
| WID-3245         | The port you have chosen as an {1} endpoint already supports an {0}. The port cannot support both DCCs. After the {1} is created, verify that no EOC alarms are present and then delete the {0} to complete the upgrade.   | The port selected as a DCC endpoint already supports another DCC. Refer to the warning message text.  |
| EID-3246         | The wizard was not able to validate the data. {0}  | CTC encountered an error.   |
| EID-3247         | An ordering error occurred. The absolute value should be {0}.  | The absolute value entered was wrong.   |
| EID-3248         | The value for the parameter {0} is invalid.  | CTC changed the incorrect parameter.  |
| EID-3249         | The voltage increment value is invalid.  | Refer to the error message text.  |
| EID-3250         | The power monitor range is invalid.  | Refer to the error message text.  |
| EID-3251         | The requested action could not be completed. {0}   | CTC could not complete the specified action.  |
| EID-3252         | No download has been initiated from this CTC session.  | Refer to the error message text.  |
| EID-3253         | The reboot operation failed. {0}   | Refer to the error message text.  |
| EID-3254         | An error occurred during validation. {0}   | The Cisco Transport Controller (CTC) was unable to validate the values entered by the user, specified by {0}. This error message is common to several different provisioning tabs within the CTC. |
| EID-3255         | You cannot change the timing configuration because a Manual/Force operation is in effect.  | Refer to the error message text.  |

| Error/Warning ID | Error/Warning Message   | Description   |
|------------------|---|---|
| WID-3256         | The timing reference(s) could not be assigned because one or more of the timing reference(s): - is already used and/or - has been selected twice and/or - is attempting to use the same slot twice. Please verify the settings. | Refer to the warning message text.  |
| EID-3257         | Duplicate DCC numbers are not permitted. {0}.   | CTC detected more than one occurrence of the a DCC number. Remove one of them.  |
| EID-3258         | A software error occurred while attempting to download the file. Please try again later.  | Refer to the error message text.  |
| EID-3259         | An error occurred while creating the FC-MR threshold.   | You must create a Fibre Channel Multirate (FC_MR) card threshold.   |
| EID-3260         | An error occurred while provisioning the internal subnet: {0}   | The specified internal subnet could not be provisioned.   |
| EID-3261         | The port rate provisioning cannot be changed while circuits exist on this port.   | Refer to the error message text.  |
| EID-3262         | The port provisioning cannot be changed when the port status is {0}.  | You must provision the ports only when the port is Out of Service.  |
| WID-3263         | You are using Java version {0}. CTC should run with Java version {1}. It can be obtained from the installation CD or <a href="http://java.sun.com/j2se/">http://java.sun.com/j2se/</a>  | CTC is being launched with the wrong version of the JRE {0}. This version of CTC requires a particular version of the JRE {1}. The CTC and browser must be closed and restarted to allow the correct Java version to be loaded. |
| EID-3265         | An error occurred while modifying the protection group.   | Protection Group could not be modified.   |
| EID-3266         | Conditions could not be retrieved from the shelf or card view.  | Refer to the error message text.  |
| WID-3267         | The XTC protection group cannot be modified.  | Refer to the warning message text.  |
| WID-3268         | The filter entry is invalid. {0}  | The specified entry is invalid.   |
| WID-3269         | The {0} operation was successfully initiated for {1} but its completion status could not be obtained from the node. When the node is accessible, check its software version to verify if the {0} succeeded.                     | Refer to the error message text.  |
| WID-3270         | The file {0} does not exist.  | The specified file does not exist.  |

| Error/Warning ID | Error/Warning Message  | Description  |
|------------------|--|--|
| WID-3271         | The value entered must be greater than {0}.  | The value entered must be greater than the specified value.  |
| WID-3272         | An entry is required.  | An entry is required to complete this task.  |
| WID-3273         | {0} already exists in the list.  | The specified item already exists in the list.   |
| WID-3274         | A software upgrade is in progress. Network configuration changes that result in a node reboot cannot take place during a software upgrade. Please try again after the software upgrade is done.  | Refer to the warning message text.   |
| WID-3275         | Ensure that the remote interface ID and the local interface ID on the two sides match. (The local interface ID on this node should equal the remote interface ID on the neighbor node and vice-versa).   | Refer to the warning message text.   |
| WID-3276         | Both {0} and {1} exist on the same selected port. {2}  | The specified port has both SDCC and LDCC.   |
| WID-3277         | The description cannot exceed {0} characters. Your input will be truncated.  | The input exceeds the character limit. The value will be truncated to the maximum character limit. |
| WID-3279         | This card has been deleted. CTC will return to the shelf view.   | CTC returns to node view.  |
| WID-3280         | ALS will not engage until both the protected trunk ports detect LOS.   | Refer to the warning message text.   |
| WID-3282         | Performing a software upgrade while TSC 5 is active could result in a service disruption. It is recommended that you make TSC 10 the active TSC by performing a soft reset of TSC 5. The following ONS 15600s are currently unsafe to upgrade... | Refer to the warning message text.   |
| WID-3283         | Before activating a new version, ensure that you have a database backup from the current version.  | Refer to the warning message text.   |
| WID-3284         | Reverting to an older version.   | CTC is being reverted to an older version of application.  |
| WID-3285         | Applying FORCE or LOCKOUT operations might result in traffic loss.   | Refer to the warning message text.   |

| Error/Warning ID | Error/Warning Message  | Description   |
|------------------|--|---|
| WID-3286         | The ring status is INCOMPLETE. CTC cannot determine if there are existing protection operations or switches in other parts of the ring. Applying a protection operation at this time could cause a traffic outage. Please confirm that no other protection operations or switches exist before continuing. | Refer to the warning message text.  |
| WID-3287         | There is a protection operation or protection switch present on the ring. Applying this protection operation now will probably cause a traffic outage.   | Refer to the warning message text.  |
| WID-3288         | The status of this ring is INCOMPLETE. CTC will not be able to apply this change to all of the nodes in the {0}.   | Change the ring status to apply the change to all nodes in the ring type.   |
| EID-3290         | The specified provisionable patchcord(s) could not be deleted.   | Refer to the error message text.  |
| EID-3291         | The revertive behavior cannot be changed because a protection switch is active.  | Protection switch should not be active to change the revertive behavior.  |
| EID-3292         | An error occurred while resetting the shelf.   | CTC encountered an error while resetting the node.  |
| EID-3293         | No such provisionable patchcords exists.   | You are attempting to delete a provisionable patchcord that does not exist. This happens when multiple instances of CTC are running and attempting to delete the same provisionable patchcord concurrently. |
| EID-3294         | No RMON thresholds are available for the selected port.  | Refer to the error message text.  |
| EID-3295         | This card does not support RMON thresholds.  | Refer to the error message text.  |
| EID-3296         | Buffer-to-buffer credit is only supported for Fibre Channel (FC) and FICON.  | Refer to the error message text.  |
| EID-3298         | This interfaces does not support ALS auto restart.   | Refer to the error message text.  |
| EID-3300         | Duplicate OSPF area IDs are not permitted.   | OSPF area IDs should be unique.   |
| EID-3301         | The LAN metric cannot be zero.   | Refer to the error message text.  |
| EID-3302         | The standby {0} is not ready.  | Standby controller card is not ready.   |

| Error/Warning ID | Error/Warning Message  | Description   |
|------------------|--|---|
| EID-3303         | The DCC area ID and {0} conflict. {1}  | DCC Area ID and ring type, specified by {0}, conflict each other due to the details specified by {1}.   |
| EID-3304         | The DCC number is out of range.  | Enter a DCC number that is within the range   |
| EID-3305         | OSPF cannot be active on the LAN interface when the backbone area is set on a DCC interface. | You cannot have the default OSPF area on a DCC while OSPF is enabled on the LAN.  |
| EID-3306         | Ethernet circuits must be bidirectional.   | Refer to the error message text.  |
| EID-3307         | An error occurred while creating a connection object at {0}.                                 | CTC encountered an error at the specified connection while creating the connection.   |
| EID-3308         | DWDM links can be used only for optical channel circuits.                                    | Refer to the error message text.  |
| EID-3309         | The link was excluded because it was in the wrong direction.                                 | The optical channel (circuit) does not allow the specified link to be included because it is in the wrong optical direction.                      |
| EID-3310         | The DWDM link does not have wavelengths available.   | Refer to the error message text.  |
| EID-3311         | The laser is already on.   | Refer to the error message text.  |
| EID-3312         | The power setpoint cannot be changed. {0} {1}  | CTC cannot change the power setpoint. The new setpoint would either make the thresholds inconsistent or set the fail threshold outside the range. |
| EID-3313         | The offset cannot be modified because the service state of the port is IS.                   | Refer to the error message text.  |
| EID-3314         | The requested action is not allowed. The state value is invalid.                             | Refer to the error message text.  |
| EID-3315         | This operation cannot be performed.  | CTC is unable to perform operation.   |
| EID-3316         | The node side is invalid.  | This task was applied to the wrong node side.   |
| EID-3317         | The ring name is too long.   | Reduce the number of characters in the name.  |

| Error/Warning ID | Error/Warning Message   | Description  |
|------------------|---|--|
| EID-3318         | The ring name is invalid.   | The name you entered is illegal.   |
| EID-3319         | The wrong line was selected.  | Select another line  |
| EID-3320         | The optical link could not be deleted.  | CTC cannot delete the optical link.  |
| EID-3321         | This feature is unsupported by this version of software.  | Refer to the error message text.   |
| EID-3322         | The equipment is not plugged in.  | Plug-in the equipment and proceed.   |
| EID-3323         | The APC system is busy.   | Automatic Power Control (APC) system is busy.  |
| EID-3324         | There is no path to regulate.   | There is no circuit path to regulate.  |
| EID-3325         | The requested action is not allowed.  | Generic DWDM provisioning failure message.   |
| EID-3326         | The input was invalid.  | The input value is incorrect.  |
| EID-3327         | An error occurred while retrieving thresholds.  | There was an error retrieving the thresholds. This message is displayed only for the OSCM/OSC-CSM line thresholds. |
| EID-3328         | An error occurred while applying changes to row {0}. The value is out of range.   | There was an error applying the changes to the specified row. The value is out of range.                           |
| EID-3330         | Unable to switch to the byte because an overhead channel is present on this byte of the port.   | Refer to the error message text.   |
| EID-3331         | An error occurred while applying changes to the row.  | Refer to the error message text.   |
| EID-3334         | Timing parameters on the protect port cannot be changed.  | You cannot change timing parameters on protect port.   |
| EID-3335         | The port type cannot be changed because the SDH validation check failed. Check if this port is part of a circuit, protection group, SONET DCC, orderwire, or UNI-C interface. | Refer to the error message text.   |
| EID-3336         | An error occurred while reading a control mode value.   | The Control Mode must be retrieved.  |
| EID-3337         | An error occurred while setting a set point gain value.   | The Gain Set Point must be set.  |
| EID-3338         | An error occurred while reading a set-point gain value.   | The Gain Set Point must be retrieved.  |

| Error/Warning ID | Error/Warning Message   | Description   |
|------------------|---|---|
| EID-3339         | An error occurred while setting a tilt calibration value.         | The tilt calibration must be set.                                     |
| EID-3340         | An error occurred while setting expected wavelength.              | The expected wavelength must be set.                                  |
| EID-3341         | An error occurred while reading expected wavelength.              | The expected wavelength must be retrieved.                            |
| EID-3342         | An error occurred while reading actual wavelength.                | The actual wavelength must be retrieved.                              |
| EID-3343         | An error occurred while reading actual band.                      | The actual band must be retrieved.                                    |
| EID-3344         | An error occurred while reading expected band.                    | The expected band must be retrieved.                                  |
| EID-3345         | An error occurred while setting expected band.                    | The expected band must be set.  |
| EID-3346         | An error occurred while retrieving defaults from the node: {0}.   | There was an error retrieving defaults from the specified node.       |
| EID-3347         | The file {0} cannot be loaded.                                    | CTC cannot load the specified file.                                   |
| EID-3348         | Properties cannot be loaded from the node.                        | Refer to the error message text.                                      |
| EID-3349         | NE update properties cannot be saved to a file.                   | Check your file system for space constraint or any other problem.     |
| EID-3350         | NE update properties cannot be loaded from the node.              | Refer to the error message text.                                      |
| EID-3351         | The file {0} does not exist.                                      | The specified file does not exist.                                    |
| EID-3352         | An error occurred while setting a value at {0}.                   | There was an error while setting the value at the specified location. |
| EID-3353         | No such interface is available.                                   | The interface specified is not present in CTC.                        |
| EID-3354         | The specified endpoint is in use.                                 | Select another endpoint that is not in use.                           |
| EID-3355         | The specified endpoint is incompatible.                           | Refer to the error message text.                                      |
| EID-3357         | The connections could not be calculated.                          | Refer to the error message text.                                      |
| EID-3358         | An optical link model does not exist for the specified interface. | Create an optical linkmodel for the interface, and proceed.           |
| EID-3359         | Optical parameters could not be set for the node.                 | Refer to the error message text.                                      |

| Error/Warning ID | Error/Warning Message  | Description   |
|------------------|--|---|
| EID-3360         | ANS cannot be performed. Please check {0} parameter value.                             | Refer to the error message text.  |
| EID-3361         | The ring termination is in use. An error occurred while deleting the ring termination. | You cannot delete a ring in use.  |
| EID-3362         | An error occurred while deleting the ring termination.                                 | There was an error while deleting ring termination.   |
| EID-3363         | No ring terminations were selected.  | You must select a ring termination.   |
| EID-3364         | An error occurred while creating the ring ID.  | There was an error while creating the ring ID.  |
| EID-3365         | The OSC termination is in use.   | Select another optical service channel (OSC) which is not in use.   |
| EID-3366         | The OSC termination could not be deleted.  | There was an error deleting the OSC termination.  |
| EID-3370         | No optical link was selected.  | You must select an optical link.  |
| EID-3371         | An error occurred while calculating the automatic optical link list.                   | Refer to the error message text.  |
| EID-3372         | CTC attempted to access an OCHNC connection that has been destroyed.                   | CTC destroyed an external attempt to access an optical channel network connection.  |
| EID-3375         | The expected span loss must be set.  | Refer to the error message text.  |
| EID-3376         | The measured span loss could not be retrieved.   | Refer to the error message text.  |
| EID-3377         | The wrong interface was used.  | The interface used for the card is wrong.   |
| EID-3378         | This is a duplicate origination patchcord identifier.                                  | The provisionable patchcord identifier to the patchcord you are attempting to provision is already in use by another patchcord on the origination node. |
| EID-3379         | This is a duplicate termination patchcord identifier.                                  | The provisionable patchcord identifier to the patchcord you are attempting to provision is already in use by another patchcord on the remote node.      |
| EID-3380         | The host cannot be found.  | Refer to the error message text.  |



| Error/Warning ID | Error/Warning Message  | Description  |
|------------------|--|--|
| EID-3381         | The maximum frame size must be between {0} and {1} and may be increased in increments of {2}.  | The frame size must be in the specified range. This can increment by the specified value.  |
| EID-3382         | The number of credits must be between {0} and {1}.   | The number of credits must be between the specified values.                                |
| EID-3383         | The GFP buffers available must be between {0} and {1} and may be increased in increments of {2}.   | The GFP buffers must be in the specified range. This can increment by the specified value. |
| WID-3384         | You are about to force the use of Secure Mode for this chassis. You will not be able to undo this operation. Is it OK to continue?   | Refer to the warning message text.   |
| EID-3385         | {0}. Delete the circuits and try again.  | Refer to the error message text.   |
| EID-3386         | The transponder mode could not be provisioned: {0}   | The specified transponder mode cannot be provisioned.                                      |
| EID-3387         | You must change port(s) {0} to an out-of-service state before changing card parameters. Click Reset to revert the changes.   | All the card ports should be changed to out-of-service before changing the parameters.     |
| EID-3388         | The card mode cannot be changed because the card has circuits.   | Refer to the error message text.   |
| EID-3389         | An error occurred while changing the card mode.  | Refer to the error message text.   |
| EID-3390         | The port is in use.  | Refer to the error message text.   |
| EID-3391         | The port rate cannot be changed because the port has been deleted.   | You cannot change the port rate of a card that has been deleted.                           |
| WID-3392         | The timing reference(s) could not be assigned because with external timing, only a single protected, or two unprotected timing references per BITS Out can be selected. Please use the "Reset" button and verify the settings. | Refer to the warning message text.   |
| WID-3393         | The timing reference(s) could not be assigned because with line or mixed timing, only a single unprotected timing reference per BITS Out can be selected. Please use the "Reset" button and verify the settings.               | Refer to the warning message text.   |
| EID-3394         | An error occurred while refreshing the power monitoring values.  | Refer to the error message text.   |

| Error/Warning ID | Error/Warning Message  | Description  |
|------------------|--|--|
| EID-3395         | The configuration is invalid. {0}  | CTC encountered an error in IP address, net mask length, or default router, or a restricted IIOP port was selected.        |
| EID-3396         | The configuration is invalid. The standby controller card is not a TCC2P card.   | The standby controller card should be a TCC2P card.  |
| EID-3397         | The file {0} is the wrong version.   | The specified file is of wrong version.  |
| EID-3398         | The PPM cannot be deleted.   | Refer to the error message text.   |
| EID-3399         | The PPM cannot be deleted because it has port(s) in use.   | Remove the ports connected to the Pluggable Port Module before it can be deleted.  |
| EID-3400         | Unable to switch. A force to the primary facility is not allowed.  | Refer to the error message text.   |
| EID-3401         | {0} cannot be provisioned for the port while {1} is enabled.   | The relationship between parameters {0} and {1} are such that enabling either one, prevents the provisioning of the other. |
| EID-3402         | The switch request could not be completed. The {0} card is not present or is not responding. Try again after ensuring that the {0} card is present and is not resetting.   | Refer to the error message text.   |
| EID-3403         | The administrative state transition has not been attempted on the monitored port.  | Refer to the error message text.   |
| EID-3404         | The far end IP address could not be set on the {0} termination. The IP address cannot be: loopback (127.0.0.0/8)<br>class D (224.0.0.0/4)<br>class E (240.0.0.0/4)<br>broadcast (255.255.255.255/32)<br>internal {1} | Refer to the error message text.   |
| EID-3405         | You cannot change card parameters with port {0} in {1} state. Click "Reset" to revert the changes.   | Refer to the error message text.   |
| EID-4000         | The {0} ring name cannot be changed now because a {0} switch is active.  | You cannot change the ring name because a switch of the same ring type is active.  |

| Error/Warning ID | Error/Warning Message   | Description  |
|------------------|---|--|
| EID-4001         | The {0} node ID cannot be changed now because a {0} switch is active.   | You cannot change the ring ID because a switch of the same ring type is active.  |
| WID-4002         | CAUTION: Reverting to an earlier software release may result in TRAFFIC LOSS and loss of connectivity to the node. It may require onsite provisioning to recover. If the node was running {0} before, reverting will restore the {0} provisioning, losing any later provisioning. If the node was running some other version, reverting will LOSE ALL PROVISIONING. {1} {2} | Refer to the warning message text.   |
| EID-4003         | The Cisco IOS console is disabled for the card in Slot {0}.   | The card may not be an IOS-based card or it may be rebooting.  |
| EID-4004         | An error occurred while canceling the software upgrade.   | CTC encountered an error while cancelling the software upgrade.  |
| EID-4005         | {0} encountered while performing a database backup.   | CTC encountered the specified error during database backup.  |
| EID-4006         | The file {0} does not exist or cannot be read.  | Refer to error message.  |
| EID-4007         | The size of the file {0} is zero.   | The size of the file that is being backed up or restored is zero.  |
| WID-4008         | A software upgrade is in progress. {0} cannot proceed during a software upgrade. Please try again after the software upgrade has completed.   | The specified action cannot be performed during a software upgrade. You must try after the upgrade process is completed. |
| EID-4009         | {0} encountered while restoring the database.   | CTC encountered the specified error while restoring the database.  |
| EID-4010         | The operation was terminated because: {0}   | Refer to the error message text.   |
| EID-4011         | An error occurred during provisioning: {0}  | Refer to the error message text.   |
| WID-4012         | Node management for {0} is not provided.  | Refer to the warning message text.   |

| Error/Warning ID | Error/Warning Message   | Description  |
|------------------|---|--|
| EID-4013         | CAUTION: Reverting to an earlier software release may result in TRAFFIC LOSS and loss of connectivity to the node. It may require onsite provisioning to recover. If the node was running {0} before, reverting will restore the {0} provisioning, losing any later provisioning. If the node was running some other version, reverting will LOSE ALL PROVISIONING. {1} {2} {3} | Refer to the error message text.   |
| EID-4014         | The manual path trace mode for this equipment does not support an expected string consisting of all null characters. Please change the expected string or the path trace mode.  | The path trace mode does not support strings that consist of null characters. You must either change the expected string or the path trace mode. |
| EID-4015         | Software activation is in progress. Provisioning is not allowed.  | Refer to the error message text.   |
| EID-4016         | Software activation is in progress. {0} is not allowed.   | Refer to the error message text.   |
| EID-4017         | Path Trace mode cannot be set at this endpoint. The circuit is one-way.   | Refer to the error message text.   |
| WID-4018         | {0} already exists. Do you want to replace it?  | Refer to the warning message text.   |
| EID-4019         | Profile cannot be mapped because the UNI Port is not in transparent mode.   | Refer to the error message text.   |
| EID-4020         | Profile cannot be mapped because the transparent mode UNI Port tagged VLAN is not {0}.  | Refer to the error message text.   |
| EID-4021         | Profile cannot be mapped because SVLAN {0} is not enabled for the NNI Port.   | Refer to the error message text.   |
| EID-4022         | The user already exists.  | Refer to the error message text.   |
| EID-4023         | Access control already exists for the group selected.   | Refer to the error message text.   |
| EID-4024         | The View already exists.  | Refer to the error message text.   |
| EID-4025         | Invalid Mask entry, cant be more then {0} the length of OID.  | Refer to the error message text.   |
| EID-4026         | CTC was unable to create a new view.  | Refer to the error message text.   |
| EID-4027         | Name and Subtree OID cant be empty.   | Refer to the error message text.   |
| EID-4028         | Password will be sent as plain text.  | Refer to the error message text.   |

| Error/Warning ID | Error/Warning Message   | Description                      |
|------------------|---|----------------------------------|
| EID-4029         | The passwords must be at least {0} characters long.   | Refer to the error message text. |
| EID-4030         | The admitted SVLAN values must be in the range [1-4093].  | Refer to the error message text. |
| EID-4031         | On {0} interface the Recover from Fiber Cut Fails.  | Refer to the error message text. |
| EID-4032         | Link Integrity and L2 1+1 protection cannot operate on the same interface.  | Refer to the error message text. |
| WID-4033         | No files were specified.<br>Please enter a valid file name.   | Refer to the error message text. |
| EID-4034         | WDMANS parameter already present.   | Refer to the error message text. |
| EID-4035         | WDMANS parameter is not valid.  | Refer to the error message text. |
| EID-4036         | WDMANS parameter cannot be removed.<br>This may be in use by the system.  | Refer to the error message text. |
| EID-4037         | This operation is not supported on the protect entity of a protection group.  | Refer to the error message text. |
| EID-4051         | The bandwidth for the configuration modes is allocated once the payload for the PPMs are provisioned.<br>In case of MXP_MR mode the bandwidth is allocated only after a circuit is created. | Refer to the error message text. |
| EID-4052         | ODU Utilization is not supported for this mode.<br>Bandwidth utilization is not valid for Operating mode provisioned on the PPM.  | Refer to the error message text. |
| EID-5000         | A valid route cannot be found for the tunnel change request.  | Refer to the error message text. |
| EID-5001         | The tunnel could not be changed.  | Refer to the error message text. |
| EID-5002         | The tunnel could not be restored and must be recreated manually.  | Refer to the error message text. |
| EID-5003         | The circuit roll failed. {0}  | Refer to the error message text. |

| Error/Warning ID | Error/Warning Message   | Description  |
|------------------|---|--|
| EID-5004         | There is already one four-fiber {0} provisioned on the set of nodes involved in {1}. The maximum number of four-fiber {0} rings has been reached for that node. | There is already one 4F BLSR provisioned on the set of nodes involved in the ring. The maximum number of 4F BLSR rings has been reached for that node. |
| WID-5005         | A non-zero hold-off time can violate switching time standards, and should only be used for a circuit with multiple path selectors.                              | Refer to the warning message text.   |
| WID-5006         | Warning: A different secondary {0} node should only be used for DRI or open-ended path protected circuits.  | You should use different secondary end point only for DRI or open-ended path protected circuits.   |
| WID-5007         | If you change the scope of this view, the contents of this profile editor will be lost.   | Refer to the warning message text.   |
| WID-5008         | Please ensure that all the protection groups are in proper states after the cancellation.   | Refer to the warning message text.   |
| WID-5009         | The circuit {0} is not upgradable. No {1} capable {2}s are available at the node {3}.   | No VT capable STSs are available at the node.  |
| EID-5010         | The domain name already exists.   | Refer to the error message text.   |
| EID-5011         | The domain name cannot exceed {0} characters.   | You may have reached the maximum number of characters.   |
| WID-5012         | The software load on {0} does not support the addition of a node to a 1+1 protection group.   | Refer to the warning message text.   |
| EID-5013         | {0} does not support the bridge and roll feature. Please select a different port.   | The specified port does not support Bridge and Roll.   |
| EID-5014         | An automatic network layout is already in progress. Please wait for it to complete before running it again.   | You must for the automatic network layout to complete before running it again.   |
| WID-5015         | {0} cannot be applied to {1}.   | You cannot apply the admin state operation, specified by {0}, to port count, specified by {1}.   |
| EID-5016         | An error occurred while attempting to provision the {0}. {1}  | CTC encountered an error while provisioning the card.  |
| EID-5017         | Provisioning could not be rolled back. The {0} might be left in an INCOMPLETE state and should be manually removed.   | You may have to remove the BLSR manually as it was left incomplete.  |

| Error/Warning ID | Error/Warning Message  | Description  |
|------------------|--|--|
| EID-5018         | {0} is a(n) {1} node and cannot be added to a(n) {2} network.  | You cannot add the node {0} of type {1} to the host node of type {2}. This prevents you from hosting both SONET and SDH nodes in the same session. |
| EID-5019         | The manual path trace mode for this equipment does not support an expected string consisting of all null characters. Please change the expected string or the path trace mode.   | The path trace mode does not support strings that consist of null characters. You must either change the expected string or the path trace mode.   |
| EID-5020         | Software activation is in progress. Provisioning is not allowed.   | Refer to the warning message text.   |
| EID-5021         | Software activation is in progress. {0} is not allowed.  | Refer to the error message text.   |
| WID-5022         | Warning: Ethergroup circuits are stateless (that is, always in service). The current state selection of {0} will be ignored.   | Refer to the warning message text.   |
| EID-5023         | CTC cannot communicate with the node. The operation failed.  | CTC encountered a network communication error. Connectivity between CTC and the NE was disrupted, either transiently or permanently.               |
| EID-5024         | The overhead circuit will not be upgraded.   | Refer to the error message text.   |
| WID-5025         | The path targeted for this switch request is already active. The switch request can be applied, but traffic will not switch at this time.  | Refer to the warning message text.   |
| EID-5026         | An ONS 15600 cannot serve as the primary or secondary node in a four-fiber {0} circuit. Please change your ring and/or node selections so that an ONS 15600 is not chosen as the primary or secondary node in this four-fiber {1} circuit. | Refer to the error message text.   |
| WID-5027         | The {0} Edit dialog box for the ring {1} has been closed due to significant provisioning changes. These changes might only be transitory, so you can reopen the {0} Edit dialog box to view the updated state.                             | Re-open the BLSR/MS-SPRing edit window to view the updated state of the ring.  |
| WID-5028         | Warning: This operation should only be used to clean up rolls that are stuck. It might also affect completeness of the circuit. Is it OK to continue with the deletion?  | Refer to the warning message text.   |

| Error/Warning ID | Error/Warning Message  | Description   |
|------------------|--|---|
| EID-5029         | A software downgrade cannot be performed to the selected version while an SSXC card is inserted in this shelf. Please follow the steps to replace the SSXC with a CXC card before continuing the software downgrade. | Refer to the error message text.  |
| EID-5030         | A software downgrade cannot be performed at the present time.  | Try the software downgrade later.   |
| WID-5031         | Canceling a software upgrade during a standby TSC clock acquisition might result in a traffic outage.  | Refer to the warning message text.  |
| EID-5032         | An error occurred while accepting the load.  | Refer to the error message text.  |
| EID-5033         | The profile could not be loaded. An error occurred while decoding the characters.  | CTC detected an error while decoding characters and could not load the profile.   |
| EID-5034         | The profile could not be loaded.<br>An error occurred while trying to recognize the file format.   | CTC detected an error and could not load the profile.   |
| EID-5035         | The profile could not be loaded. An error occurred while reading the file.   | CTC could not read the file and is therefore unable to load the profile.  |
| EID-5036         | The GNE hostname {0} is invalid.   | The specified host name is invalid.<br>CTC could not resolve the host name to any valid IP address  |
| EID-5037         | Provisionable patchcords cannot be created between transponder trunk ports and multiplexer/demultiplexer ports on the same node.   | You must create provisionable patchcords between transponder trunk ports and mux/demux ports that are on different nodes.                                   |
| EID-5038         | Provisionable patchcords created between transponder trunk ports and multiplexer/demultiplexer ports must use the same wavelength: {0} is not equal to {1}.  | Wavelengths used by provisionable patchcords for transponder trunk ports and mux/demux ports must be the same.  |
| EID-5039         | Provisionable patchcords created between transponder trunk ports and multiplexer/demultiplexer ports must use the same wavelength: {0} is not equal to {1}.<br>Please provision the {2} wavelength on {3}.           | Transmitter and receiver port wavelengths are not equal. Provision the receiver and transmitter wavelengths on transmitter and receiver ports respectively. |
| EID-5040         | Provisionable patchcords created between OC3/OC12 ports and multiplexer/demultiplexer ports are not supported.   | Refer to the error message text.  |



| Error/Warning ID | Error/Warning Message   | Description   |
|------------------|---|---|
| EID-5041         | Provisionable patchcords created between gray OC-N trunk ports and multiplexer/demultiplexer ports are not supported.   | Refer to the error message text.  |
| EID-5042         | Provisionable patchcords created between OC-N trunk ports and multiplexer/demultiplexer ports must use the same wavelength: {0} is not equal to {1}.                            | Wavelengths used by provisionable patchcords for OC-N trunk ports and mux/demux ports must be the same. |
| WID-5043         | Warning: Only the line card was provisioned. The wavelength compatibility check was skipped.  | Refer to the warning message text.  |
| EID-5044         | Virtual links can be used only for OCH-Trail circuits.  | Refer to the error message text.  |
| EID-5045         | The virtual link does not have wavelengths available.   | Set wavelengths for the virtual link and proceed.   |
| WID-5046         | Warning: if you select "Use OCHNC Direction," your circuit will be limited to nodes prior to release 07.00.   | Refer to the warning message text.  |
| EID-5047         | Provisionable patchcords created between OC3/OC12 ports are not supported.  | Refer to the error message text.  |
| EID-5048         | Provisionable patchcords created between gray OC-N trunk ports are not supported.   | Refer to the error message text.  |
| EID-5049         | Provisionable patchcords created between gray OC-N trunk ports and multiplexer/demultiplexer ports are not supported.   | Refer to the error message text.  |
| EID-5050         | The element model could not be found. {0}   | The specified Element Model cannot be located.  |
| WID-5051         | The port state cannot be indirectly transitioned because the port aggregates OCHCC circuits: if the port state needs to be changed, edit it directly through port provisioning. | Refer to the warning message text.  |
| EID-5052         | The operation is not valid for the connection type.   | You may have selected the incorrect switch.   |
| EID-5053         | The operation cannot be performed because the connection is under test access.  | Refer to the error message text.  |
| EID-5054         | The TL1 tunnel could not be opened. {0}   | Refer to the error message text.  |
| EID-5055         | Some patchcords were not deleted. Patchcords cannot be deleted if they are incomplete or support any circuits, or if the nodes supporting them are not connected.               | Refer to the error message text.  |

| Error/Warning ID | Error/Warning Message   | Description  |
|------------------|---|--|
| EID-5056         | This PPC cannot be deleted because one or more circuits are provisioned over it.  | Remove the circuits provisioned over the provisionable patchcord before trying to delete it. |
| EID-5057         | The addition of the last node has not yet finished. Please wait before trying to add a new node.  | Refer to the error message text.   |
| EID-5058         | An OCHNC upgrade is applicable only to bidirectional circuits.  | Refer to the error message text.   |
| EID-5059         | The OCHNC upgrade failed. One or more communication failures occurred during the operation.   | CTC encountered a complete failure while upgrading optical channel network connection.       |
| EID-5060         | The OCHNC upgrade partially failed. One or more communication failures occurred during the operation. Create the OCHCC manually.  | CTC encountered a partial failure while upgrading an optical channel network connection.     |
| EID-5061         | The overhead circuit source and destination must reside on the same shelf.  | Refer to the error message text.   |
| EID-5062         | A four-fiber {0} cannot be created using three cards.   | A four-fiber BLSR needs four cards.  |
| WID-5063         | The profile "{0}" includes a change to the OPEN-SLOT alarm severity. This change is disallowed for the ONS 15600. "{1}" will continue to use the OPEN-SLOT severity of MN that is included in the default configuration. Other changes from the "{2}" profile were successfully applied to {3}. | Refer to the warning message text.   |
| EID-5064         | {0}<br>{1}  | This indicates the status of path protection switching.                                      |
| WID-5065         | If you apply routing constraints to more than {0} nodes, performance might be affected and the operation might require more time than expected. Select Yes if you intend to proceed in spite of this risk, or No if you prefer to review your selection.  | Refer to the warning message text.   |
| WID-5066         | The routing constraints will be lost. Are you sure you want to reset your changes?  | Refer to the warning message text.   |
| WID-5067         | The routing constraints will be lost. Are you sure you want to leave this panel?  | Refer to the warning message text.   |
| EID-5068         | The routing constraints could not be applied.   | Refer to the error message text.   |

| Error/Warning ID | Error/Warning Message   | Description  |
|------------------|---|--|
| EID-5069         | A source node cannot be added to either of these lists.   | Select a node other than the source node to add to the route.  |
| EID-5070         | A destination node cannot be added to either of these lists.  | Select a node other than the destination node to add to the route.   |
| EID-5071         | This node already belongs to one of these lists.  | The node is already selected either in include or exclude list in the OCH circuit.                           |
| EID-5072         | An OCH-Trail tunnel link was found but without any associated circuit.  | Create an OCH-Trail circuit associated with the link.  |
| EID-5073         | You are creating an unprotected link from a protected port. Do you want to continue?  | Refer to the error message.  |
| EID-5074         | Deleting OCH DCN circuits will cause a loss of connectivity to nodes in the circuit path that do not have other DCN connections. Do you want to continue?   | Refer to the error message.  |
| EID-5075         | The VLAN ID must be a number between 1 and 4093.  | Enter a number between 1 and 4093.   |
| EID-5076         | An error occurred while provisioning the VLAN ID. The VLAN ID is already present in the current profile   | Select a VLAN ID that is not present in the current profile.   |
| EID-5077         | An error occurred while provisioning the VLAN database profile. {0}   | CTC could not save the VLAN profile to the file name mentioned.  |
| EID-5078         | The VLAN merge is not complete. You forgot to fill {0} record(s).   | Fill in the number of records specified and then proceed.  |
| EID-5079         | An error occurred while validating the provisionable patchcord.   | Refer to the error message text.   |
| EID-5080         | No rolls are available.   | You cannot delete a roll without selecting a roll.   |
| EID-5081         | An error occurred while tracing the RPR ring: {0}   | The circuit reference is invalid.  |
| EID-5082         | {0} does not support: - Low-order circuits that have both {1}-protected and {2}-protected spans and that cross a node that does not have low-order cross-connect capability. - High-order circuits that carry low-order circuits with the parameters described above. | Refer to the error message text.   |
| EID-5083         | This circuit is not the same size as the existing circuit {0}. This circuit has size {1} and the existing circuit has size {2}.   | During an RPR circuit creation ML card, the new circuit size and the existing circuit size must be the same. |

| Error/Warning ID | Error/Warning Message   | Description   |
|------------------|---|---|
| EID-5084         | The Trunk model could not be found. {0}   | The trunk specified is not found.                         |
| EID-5085         | The maximum number of VLAN DB profiles is {0}.  | Refer to the error message.                               |
| EID-5086         | The circuit roll failed. You cannot bridge and roll the selected circuit because it has a monitor circuit.                      | Refer to the error message.                               |
| EID-5087         | You cannot use same slot for east working and west protect ports.   | Refer to the error message text.                          |
| EID-5088         | You cannot use same slot for east working and west protect ports.   | Refer to the error message text.                          |
| WID-5089         | The maximum number of circuits that can be deleted at a time is 200. Do you want to delete the first 200 circuits selected?     | Refer to the error message text                           |
| EID-5090         | This operation cannot be completed. The selected circuits have different state models; please select circuits of the same type. | Refer to the error message text                           |
| EID-5091         | Some PPC terminations were not repaired.  | Refer to the error message text                           |
| WID-5092         | The TL1 encoding mode for the tunnel is being changed. Do you want to modify the encoding?                                      | Confirm if you really want to modify TL1 tunnel encoding. |
| EID-5094         | Currently, CTC does not support bridge and roll on circuits having multiple cross-connects on a single node.                    | Refer to the error message text.                          |
| EID-5095         | No path were selected. Please select at least one path starting from the {0} NE.  | Refer to the error message text.                          |
| EID-5096         | The first path must starts from the {0} NE.   | Refer to the error message text.                          |
| EID-5097         | The selected path should be linked with the last selected and keep the same direction.  | Refer to the error message text.                          |
| EID-5098         | The node is not selectable. Only the Span between the nodes are selectable.   | Refer to the error message text.                          |
| EID-5099         | Raman Command Error on {0}. {1}.  | Refer to the error message text.                          |
| EID-5100         | Raman Command in TimeOut. {0}.  | Refer to the error message text.                          |
| EID-5101         | Failed to get trunk ports for client. {0}.  | Refer to the error message text.                          |
| EID-5102         | Protected cards must have 2 trunk ports. (found {0}).   | Refer to the error message text.                          |

| Error/Warning ID | Error/Warning Message  | Description                      |
|------------------|--|----------------------------------|
| EID-5103         | Failed to get colocated OCH ports for trunk: {0}.  | Refer to the error message text. |
| EID-5104         | Both OCHCC and OCHNC Protected are not allowed.  | Refer to the error message text. |
| EID-5105         | Cannot find entity model for endpoint: {0}.  | Refer to the error message text. |
| EID-5106         | Cannot find Out OTS line for selected endpoint: {0}.   | Refer to the error message text. |
| EID-5107         | Cannot find Protected Out OTS line for selected endpoint: {0}.   | Refer to the error message text. |
| EID-5108         | The demultiplexer associated with the selected endpoint :{0} is missing or not connected.                      | Refer to the error message text. |
| EID-5109         | The demultiplexer associated with the protect path for the selected endpoint: {0} is missing or not connected. | Refer to the error message text. |
| EID-5110         | The card selection is invalid. No cards were selected.   | Refer to the error message text. |
| EID-5111         | An error was occurred while configuring SNMPv3 proxy server.   | Refer to the error message text. |
| EID-5112         | No source of trap was selected.  | Refer to the error message text. |
| EID-5113         | Specify a valid value for target tag.  | Refer to the error message text. |
| EID-5114         | Specify a valid value for context engine ID.   | Refer to the error message text. |
| EID-5115         | No value was selected for proxy type.  | Refer to the error message text. |
| EID-5116         | No value was selected for local user.  | Refer to the error message text. |
| EID-5117         | No value was selected for proxy destination.   | Refer to the error message text. |
| EID-5118         | Specify a valid value for target IP.   | Refer to the error message text. |
| EID-5119         | The password for authentication should be at least 8 characters long.  | Refer to the error message text. |
| EID-5120         | The user name should be atleast 6 characters long.   | Refer to the error message text. |
| EID-5122         | The node ( {0} ) does not support ML-MR POS port protection.   | Refer to the error message text. |
| EID-5123         | Primary ( {0} ) and secondary ( {1} ) nodes have to be the same for ML-MR POS port protection.                 | Refer to the error message text. |
| EID-5124         | No nodes appear to support a Pseudo IOS connection.  | Refer to the error message text. |

| Error/Warning ID | Error/Warning Message   | Description                        |
|------------------|---|------------------------------------|
| EID-5125         | No node was selected.   | Refer to the error message text.   |
| EID-5126         | The Pseudo IOS console is disabled for the selected node.   | Refer to the error message text.   |
| EID-5127         | The password for encryption should be at least 8 characters long.   | Refer to the error message text.   |
| EID-5128         | {0} configuration already exists for the {1} {2} with the specified parameters.   | Refer to the error message text.   |
| WID-5129         | Failed to retrieve the complete OSPF database as it is very large. Please contact Cisco Technical Support ( <a href="http://www.cisco.com/techsupport">http://www.cisco.com/techsupport</a> ) if you want to retrieve the complete OSPF database. | Refer to the warning message text. |
| EID-5131         | An error occurred while deleting the circuit end point.   | Refer to the error message text.   |
| WID-5132         | Failed to retrieve the status of Proxy server on the node. Please contact Cisco Technical Support ( <a href="http://www.cisco.com/techsupport">http://www.cisco.com/techsupport</a> ) if you want to retrieve the Proxy status.                   | Refer to the warning message text. |
| EID-5133         | SNMPv3 Proxy configuration already exists for the specified parameters.   | Refer to the error message text.   |
| EID-5134         | On node {0} the calculated gain is much greater than expected. The wizard cannot operate under this condition. Please call TAC for support.   | Refer to the error message text.   |
| EID-5135         | Added {0} network circuits to {1}.<br>Circuits using the following wavelength(s) could not be updated as there is not a unique path through the added node:<br>{2}  | Refer to the error message text.   |
| WID-5136         | This operation will be applied to all drops of this circuit.  | Refer to the error message text.   |
| EID-5137         | Please specify a valid SRLG value.<br>SRLG value should be numeric.   | Refer to the error message text.   |
| EID-5138         | Please specify a unique SRLG value.<br>SRLG value already exists.   | Refer to the error message text.   |

| Error/Warning ID | Error/Warning Message  | Description   |
|------------------|--|---|
| EID-5139         | Unable to retrieve the node info.  | The node name/node IP address could not be retrieved.   |
| EID-5140         | Unable to retrieve the link info.  | The link source/link destination information could not be retrieved.                              |
| EID-5141         | Error while initializing some instances.                                       | Error in the backend process.   |
| EID-5142         | Unable to generate the SRLG Report.  | The node name/node IP address or link source/link destination information could not be retrieved. |
| WID-5143         | Are you sure you want to reset the unique SRLG for {0}                         | Refer to the error message text.  |
| EID-5144         | Unable to set the SRLG for {0}   | Refer to the error message text.  |
| EID-5145         | Unable to launch view for {0}  | The node/link is down.  |
| EID-5146         | Unknown Error occurred while updating the SRLG value on the Node/Link.<br>{0}  | Refer to the error message text.  |
| WID-5147         | Are you sure you want to reset the additional SRLG for {0}                     | Refer to the error message text.  |
| EID-5149         | Unable to get the node model   | Complete node information could not be retrieved.   |
| EID-5150         | Unable to get the side model   | Complete side information could not be retrieved.   |
| EID-5151         | Unable to delete the SRLG for CRS node {0}                                     | Refer to the error message text.  |
| WID-5152         | Some SRLGs cannot be synchronized.<br>Network operation might be inconsistent. | Refer to the error message text.  |

| Error/Warning ID | Error/Warning Message   | Description  |
|------------------|---|--|
| EID-5153         | Unable to perform SRLG synchronization operation.   | <ul style="list-style-type: none"> <li>The node name/node IP address or link source/link destination information could not be retrieved.</li> <li>Cisco CRS node connectivity is down.</li> <li>XML interface on the Cisco CRS is not reachable.</li> <li>Not enough memory on the Cisco CRS.</li> </ul> |
| EID-5154         | Specified value is out of range for SRLG.<br>SRLG value should be specified between {0}-{1}   | Refer to the error message text.   |
| WID-5155         | No. of SRLGs for circuit {0} are exceeding the limit.<br>One circuit can have maximum {1} SRLGs defined.<br>Trimming SRLG list to defined maximum size. | Refer to the error message text.   |
| EID-5156         | Maximum limit for defining additional SRLGs for Node/Link is reached. Maximum SRLGs that can be defined are {0}   | Refer to the error message text.   |
| WID-5157         | No CRS based OCH Trail circuits detected  | There are no Cisco CRS nodes associated with the circuit.  |
| WID-5158         | Some SRLGs cannot be deleted from CRS.<br>Please use Synchronize IPoDWDM to synchronize SRLGs.  | <ul style="list-style-type: none"> <li>Cisco CRS node connectivity is down.</li> <li>XML interface on the Cisco CRS is not reachable.</li> <li>Not enough memory on the Cisco CRS.</li> </ul>  |
| WID-5159         | Some SRLGs cannot be set on CRS.<br>Please use Synchronize IPoDWDM to synchronize.  | <ul style="list-style-type: none"> <li>Cisco CRS node connectivity is down.</li> <li>XML interface on the Cisco CRS is not reachable.</li> <li>Not enough memory on the Cisco CRS.</li> </ul>  |



| Error/Warning ID | Error/Warning Message   | Description  |
|------------------|---|--|
| EID-5160         | Maintenance state cannot be set on CRS.<br>Please use Synchronize IPoDWDM to synchronize. | <ul style="list-style-type: none"> <li>• Cisco CRS node connectivity is down.</li> <li>• XML interface on the Cisco CRS is not reachable.</li> <li>• Not enough memory on the Cisco CRS.</li> </ul>  |
| EID-5161         | Some of the effected routers could not be brought back into IS.                           | <ul style="list-style-type: none"> <li>• Cisco CRS node connectivity is down.</li> <li>• XML interface on the Cisco CRS is not reachable.</li> <li>• Not enough memory on the Cisco CRS.</li> </ul>  |
| EID-5162         | The circuit must be in the DISCOVERED state in order to start a PPT.                      | Refer to the error message text.   |
| EID-5163         | Unable to retrieve the Shelf info.  | Complete node information could not be retrieved.  |
| EID-5164         | Requested operation cannot be completed.  | Refer to the error message text.   |
| EID-5165         | Unable to perform Maintenance synchronization operation.                                  | <ul style="list-style-type: none"> <li>• The node name/node IP address or link source/link destination information could not be retrieved.</li> <li>• Cisco CRS node connectivity is down.</li> <li>• XML interface on the Cisco CRS is not reachable.</li> <li>• Not enough memory on the Cisco CRS.</li> </ul> |
| EID-5166         | Source is not fully specified.  | The node, shelf, or slot is not selected.  |

| Error/Warning ID | Error/Warning Message  | Description   |
|------------------|--|---|
| EID-5167         | Unable to set the Transport Admin State on the CRS {0}   | <ul style="list-style-type: none"> <li>• Cisco CRS node connectivity is down.</li> <li>• XML interface on the Cisco CRS is not reachable.</li> <li>• Not enough memory on the Cisco CRS.</li> </ul> |
| EID-5168         | Unable to set the Maintenance state for {0}  | Complete node information could not be retrieved.   |
| WID-5169         | Some routers have responded not to start maintenance.<br>Do you still want to go ahead with the maintenance activity?  | Refer to the error message text.  |
| WID-5170         | Some Transport Admin States cannot be synchronized.<br>Network operation might be inconsistent.  | Refer to the error message text.  |
| WID-5171         | Some routers have not responded with Embargo status.<br>Continuing maintenance activity may be traffic affecting.<br>Are you sure you want to continue?  | Refer to the error message text.  |
| EID-5172         | Provisionable patchcords can not be created between incompatible ports.  | Refer to the error message text.  |
| EID-5173         | Some Server Trail terminations were not repaired.  | Refer to the error message text.  |
| WID-5174         | Routing constraints has been specified only for protected path.<br>Can be evaluated to move some constraints on working path since these are treated with priority.<br>Please consider that some good constraint on protected part may not be evaluated correctly since that constraint may be already applied to working path by auto-routing.<br>Do you want to continue anyway? | Refer to the error message text.  |
| EID-5175         | Unknown Error occurred while updating the SRLG value on the CRS node(s).<br>{0}  | Refer to the error message text.  |
| WID-5176         | One or more SVLANs are invalid.<br>Please remove them before continuing.   | Refer to the error message text.  |
|                  |  |   |
|                  |  |   |

| Error/Warning ID | Error/Warning Message   | Description  |
|------------------|---|--|
| EID-5217         | Error in trunk configuration on {0}.  | Refer to the error message text.                                     |
| EID-5218         | Gmpls circuits can not be reconfigured.   | Refer to the error message text.                                     |
| EID-5220         | The time slot selected does not match the payload.  | Select the correct payload.  |
| EID-5221         | The ODU-1 selected does not match the payload.  | Select the correct payload.  |
| EID-6000         | This platform does not support power monitoring thresholds.   | Refer to the error message text.                                     |
| EID-6001         | One of the XC cards has failures or is missing.   | Check whether all the cross-connect cards are installed and working. |
| EID-6002         | One of the XC cards is locked.  | Unlock the cross-connect card.                                       |
| EID-6003         | The OSC termination could not be created. This ring ID is already assigned.   | Enter a new ID for the ring.   |
| EID-6004         | A system reset cannot be performed while a BLSR ring is provisioned on the node.  | Remove the BLSR from the node and continue with the reset procedure. |
| EID-6005         | The timing references could not be assigned. - Only two DS1 or BITS interfaces can be specified. - DS1 interfaces cannot be retimed and used as a reference. - BITS-2 is not supported on this platform.  | Refer to the error message text.                                     |
| EID-6006         | The timing references could not be assigned. - An NE reference can only be used if the timing mode is LINE. - A BITS reference can only be used if the timing mode is not LINE. - A Line reference can only be used if the timing mode is not EXTERNAL. | Refer to the error message text.                                     |
| EID-6008         | SF BER and SD BER are not provisionable on the protect line of a protection group.  | Refer to the error message text.                                     |
| WID-6009         | If autoadjust GFP buffers is disabled, GFP buffers available must be set to an appropriate value based on the distance between the circuit endpoints.   | Refer to the warning message text.                                   |
| WID-6010         | If auto detection of credits is disabled, credits available must be set to a value less than or equal to the number of receive credits on the connected FC endpoint.  | Refer to the warning message text.                                   |
| WID-6011         | Ingress idle filtering should be turned off only when required to operate with non-Cisco Fibre Channel/FICON-over-SONET equipment.  | Refer to the warning message text.                                   |

| Error/Warning ID | Error/Warning Message  | Description   |
|------------------|--|---|
| EID-6012         | The retiming configuration could not be changed because there are circuits on this port.                                 | You cannot change the timing configuration on this port unless the circuits on this port are deleted. |
| EID-6013         | The NTP/SNTP server could not be changed.<br>{1}   | Refer to the error message text.  |
| EID-6014         | The operation failed because the reference state is OOS.   | Change the Out-of-service state to Active.  |
| EID-6015         | The distance extension cannot be disabled if the port media type is FICON 1Gbps ISL or FICON 2Gbps ISL.                  | Refer to the error message text.  |
| EID-6016         | The card mode cannot be changed to Fibre Channel Line Rate if the port media type is FICON 1Gbps ISL or FICON 2Gbps ISL. | Refer to the error message text.  |
| EID-6017         | The destination of a {0} route cannot be a node IP address.  | A node IP address cannot be the destination for a static route.                                       |
| EID-6018         | The destination of a {0} route cannot be the same as the subnet used by the node.  | Refer to the error message text.  |
| EID-6019         | The destination of a static route cannot be 255.255.255.255  | The network address such as 255.255.255.255 is not valid. Enter a valid address.                      |
| EID-6020         | The destination of a static route cannot be the loopback network (127.0.0.0/8).  | Refer to the error message text.  |
| EID-6021         | The subnet mask length for a non default route must be between 8 and 32.   | Length of subnet mask must be within the specified range.   |
| EID-6022         | The subnet mask length for a default route must be 0.  | Refer to the error message text.  |
| EID-6023         | The destination of a {0} route cannot be an internal network {1}.  | The destination of a static route must not be an internal network.                                    |
| EID-6024         | The destination of a {0} route cannot be a class D (224.0.0.0/4) or class E (240.0.0.0/4) address.                       | The destination of a static route must not be a class D or class E address.                           |
| EID-6025         | The destination of a {0} route cannot be a class A broadcast address (x.255.255.255/8).                                  | The destination of a static route must not be a class A broadcast address. It should be (xxx.0.0.0).  |

| Error/Warning ID | Error/Warning Message   | Description   |
|------------------|---|---|
| EID-6026         | The destination of a {0} route cannot be a class B broadcast address (x.x.255.255/16).                        | The destination of a static route must not be a class B broadcast address.                                      |
| EID-6027         | The destination of a {0} route cannot be a class C broadcast address (x.x.x.255/24).                          | The destination of a static route must not be a class C broadcast address.                                      |
| EID-6028         | The destination of a {0} route cannot be the subnet broadcast address associated with a node IP address.      | The destination of a static route must not be a subnet broadcast address of a node IP.                          |
| EID-6029         | The next hop of a static route cannot be the same as the destination of the route or an internal network {0}. | Static route must have the default route as the next hop, and not destination of the route or internal network. |
| EID-6030         | The next hop of a static default route must be the provisioned default router.                                | The default route is selected for networks that do not have a specific route.                                   |
| EID-6031         | No more static routes can be created.   | You have reached the maximum number of static routes.   |
| EID-6032         | This static route already exists.   | Refer to the error message text.  |
| EID-6033         | A previous operation is still in progress.  | Another operation is in progress. You must try after sometime.  |
| EID-6035         | The parent entity does not exist.   | Refer to the error message text.  |
| EID-6036         | The parent PPM entity does not exist.   | Create a parent entity for the PPM.   |
| EID-6037         | This equipment type is not supported.   | CTC does not support this equipment.  |
| EID-6038         | The PPM port is invalid.  | Refer to the error message text.  |
| EID-6039         | The card is part of a regeneration group.   | Select another card.  |
| EID-6040         | Out of memory.  | Refer to the error message text.  |
| EID-6041         | The port is already present.  | Refer to the error message text.  |
| EID-6042         | The port is used as timing source.  | Choose another port because the selected port is being used as a timing source.                                 |
| EID-6043         | A DCC or GCC is present.  | Refer to the error message text.  |
| EID-6044         | The card or port is part of protection group.   | Refer to the error message text.  |

| Error/Warning ID | Error/Warning Message  | Description   |
|------------------|--|---|
| EID-6045         | The port has overhead circuit(s).  | Refer to the error message text.  |
| EID-6046         | The ITU-T G.709 configuration is not compatible with the data rate.      | Refer to the error message text.  |
| EID-6047         | The port cannot be deleted because its service state is OOS-MA,LPBK&MT.  | To delete the port, you must change the port state to OOS-DSBLD.            |
| EID-6048         | {0} is {1}.  | The trunk port is in the wrong state to carry out the action.               |
| EID-6049         | The card operating mode of {0} is not supported.                         | CTC does not support the mode of operation requested on the card.           |
| EID-6050         | Some {0} terminations were not {1}d. {2}                                 | Refer to the error message text.  |
| WID-6051         | All {0} terminations were {1}d successfully. {2}                         | Refer to the warning message text.  |
| EID-6052         | The authentication key can not be blank.                                 | Enter an authentication key.  |
| EID-6053         | No more SNMP trap destinations can be created.                           | You have reached the maximum number of SNMP trap destinations.              |
| EID-6054         | {0} is not a valid IP address for an SNMP trap destination.              | The IP address specified is not a valid receiver of SNMP traps.             |
| EID-6055         | The IP address is already in use.  | Refer to the error message text.  |
| EID-6056         | The SNMP trap destination is invalid. {0}                                | The specified SNMP trap destination is invalid. Choose another destination. |
| WID-6057         | Changing the card mode will result in an automatic reset.                | Refer to the warning message text.  |
| EID-6058         | The maximum number of IP-over-CLNS tunnels has been exceeded.            | Refer to the error message text.  |
| EID-6059         | The specified IP-over-CLNS tunnel already exists!                        | Specify another IP Over CLNS tunnel.  |
| EID-6060         | An error occurred while trying to {0} an IP-over-CLNS tunnel entry: {1}. | Refer to the error message text.  |
| EID-6061         | An error occurred while deleting the IP-over-CLNS tunnel entry.          | CTC encountered an error while deleting the IP Over CLNS tunnel entry.      |
| EID-6062         | The selected IP-over-CLNS tunnel does not exist.                         | Create a IP Over CLNS tunnel.   |

| Error/Warning ID | Error/Warning Message  | Description   |
|------------------|--|---|
| EID-6063         | The selected router does not exist.  | Create a router.  |
| EID-6064         | The MAA address list is full.  | Refer to the error message text.  |
| EID-6065         | The selected area address is duplicated.   | Enter another area address.   |
| EID-6066         | The primary area address cannot be removed.  | Refer to the error message text.  |
| EID-6067         | The selected area address does not exist.  | Choose another area address.  |
| EID-6068         | The IP-over-CLNS NSEL cannot be modified while there are IP-over-CLNS tunnel routes provisioned.   | You cannot change the NSEL address if tunnels are provisioned.                                |
| EID-6069         | The node is currently in ES mode. Only Router 1 can be provisioned.  | An End System needs only one provisioned router.  |
| EID-6070         | No router was selected.  | Select a router.  |
| EID-6071         | The TARP data cache cannot be flushed.   | You cannot flush the cache in the Tunnel identifier Address Resolution Protocol (TARP) state. |
| EID-6072         | The TARP data cache entry cannot be added: {0}   | You cannot add the specified cache entry.   |
| WID-6073         | A TARP request has been initiated. Try refreshing the TARP data cache later.   | Refer to the warning message text.  |
| EID-6074         | End system mode only supports one subnet.  | Refer to the error message text.  |
| EID-6075         | An error occurred while trying to remove a MAT entry. The entry does not exist.  | CTC is removing the MAT entry.  |
| EID-6076         | An error occurred while trying to {0} a TARP manual adjacency entry: {1}   | CTC cannot add the specified adjacency entry for reasons unknown.                             |
| EID-6077         | The area address must be between 1 and 13 bytes long, inclusive.   | The area address should not be more than 13 characters.                                       |
| EID-6078         | A TDC entry with this TID {0} does not exist in the table.   | The specified Tunnel Identifier does not exist.   |
| EID-6079         | A TDC entry with this TID {0} could not be removed. Please verify that TARP is enabled.  | You must enable TARP to remove the TDC entry.   |
| WID-6080         | Router {0} does not have an area address in common with Router 1. Switching from IS L1/L2 to IS L1 in this case will partition your network. | Refer to the warning message text.  |

| Error/Warning ID | Error/Warning Message   | Description  |
|------------------|---|--|
| EID-6081         | The limit of 10 RADIUS server entries has been reached.   | CTC does not allow more than 10 RADIUS servers.                          |
| EID-6082         | {0} cannot be empty.  | The Shared Secrets field should not be empty.                            |
| EID-6083         | The entry you selected for editing has been altered by another user. The changes cannot be committed.                         | Refer to the error message text.   |
| EID-6084         | The RADIUS server entry already exists.   | Specify another RADIUS server entry.                                     |
| WID-6085         | Disabling shell access will prevent Cisco TAC from connecting to the vxWorks shell to assist users.                           | Refer to the warning message text.                                       |
| EID-6086         | The card cannot be changed because card resources are in use.   | The card you are trying to remove is being used. Cannot change the card. |
| EID-6087         | The card cannot be changed because the card type is invalid or incompatible.  | Refer to the error message text.   |
| EID-6088         | This line cannot be put into loopback while it is in use as a timing source.  | Refer to the error message text.   |
| EID-6089         | The interface was not found. {0}  | CTC cannot find the specified interface.                                 |
| EID-6090         | The interface type is not valid for this operation. {0}   | Choose another interface.  |
| EID-6091         | The current state of the interface prohibits this operation. {0}  | The port is in an invalid state to set a loopback.                       |
| EID-6092         | This operation is prohibited for this interface. {0}  | CTC does not allow this operation for the specified interface.           |
| EID-6093         | The maximum number of TARP data cache entries has been exceeded.  | You have exceeded the number of characters permitted.                    |
| EID-6094         | The maximum number of manual adjacency table entries has been exceeded.   | Refer to the error message text.   |
| EID-6095         | The AIS/Squelch mode is invalid.  | Refer to the error message text.   |
| EID-6096         | A default IP-over-CLNS tunnel route is only allowed on a node without a default static route and a default router of 0.0.0.0. | Refer to the error message text.   |
| EID-6097         | The authorization key does not comply with Cisco IOS password restrictions. {0}   | Specify another authorization key.                                       |



| Error/Warning ID | Error/Warning Message  | Description  |
|------------------|--|--|
| EID-6098         | A default static route is not allowed when a default IP-over-CLNS tunnel exists.   | Refer to the error message text.   |
| EID-6099         | You cannot create a subnet on a disabled router.   | Create the subnet on an active router.   |
| WID-6100         | Disabling a router that has a provisioned subnet is not recommended.   | Refer to the warning message text.   |
| EID-6101         | The MAT entry already exists.  | Refer to the error message text.   |
| WID-6102         | The new card has less bandwidth than the current card. Circuits of size VT15 and larger will be deleted.   | Refer to the warning message text.   |
| EID-6103         | The TDC entry already exists.  | Specify another entry for TARP Data Cache.   |
| EID-6104         | APC ABORTED.   | Automatic Power Control is aborted.  |
| EID-6105         | The 'Change Card' command is valid for MRC cards only when Port 1 is the sole provisioned port.  | Refer to the error message text.   |
| EID-6106         | To delete all RADIUS server entries, RADIUS authentication must be disabled.   | Disable Radius authentication and proceed.   |
| EID-6107         | The node failed to restart the TELNET service on the selected port. Try using another unreserved port that is not being used within the following ranges: 23, 1001-9999 (with the exception of 1080, 2001-2017, 2361, 3081-3083, 4001-4017, 4022, 4081, 4083, 5000, 5001, 7200, 9100, 9300, 9401). | Refer to the error message text.   |
| EID-6108         | That port is already in use.   | Restart a TELNET session.  |
| EID-6109         | A section trace is active on the trunk port. The action cannot be completed.   | Actions such as putting the port in an incomplete state are not permitted while a section trace is active. |
| EID-6110         | The maximum number of TARP requests has been reached.  | You have exceeded the maximum number of TARP requests.   |
| EID-6111         | The card in Slot {0} cannot be removed from the protection group while its traffic is switched.  | Refer to the error message text.   |

| Error/Warning ID | Error/Warning Message   | Description  |
|------------------|---|--|
| EID-6112         | An error occurred while adding a shelf: {0}   | The shelf ID specified is invalid or already exists, the equipment does not support multishelf, the specified shelf position is out of range, or the specified shelf position is already in use.                                 |
| EID-6113         | An error occurred while deleting a shelf: {0}   | One or more of the equipment modules (provisioned virtual links, provisioned server trails, provisioned protection groups, or provisioned DCCs) in the shelf is currently in use. Delete cards from all the slots and try again. |
| EID-6114         | The maximum number of supported shelves has already been provisioned.   | Refer to the error message text.   |
| EID-6115         | There are bad or duplicate shelf positions. Valid rack numbers are {0} to {1}. Valid rack positions are {2} to {3}. | Refer to the error message text.   |
| EID-6116         | CTC attempted to access an OCH-Traill connection that has been destroyed.   | Software has prevented an attempt to access an OCH trail.  |
| EID-6117         | CTC attempted to access an OCH-Traill audit that has been destroyed.  | The resource cannot be accessed because it is released or fully utilized.  |
| WID-6118         | The following slots are provisioned but do not have cards installed: {0} CTC will assume they are ITU-T interfaces. | Refer to the warning message text.   |
| EID-6119         | The shelves could not be rearranged. {0}  | One of the following conditions is present: duplicate shelf positions, invalid shelf positions, or concurrent movement (two CTC sessions are attempting to rearrange the shelves at the same time.)                              |
| EID-6120         | This equipment does not support multishelf.   | Refer to the error message text.   |
| WID-6121         | This internal patchcord cannot be provisioned because the endpoints have no compatible wavelengths.                 | The end points of an internal patchcord should have compatible wavelengths.  |
| EID-6122         | The wizard could not be started. {0}  | CTC was unable to initiate the wizard due to the specified reason.   |

| Error/Warning ID | Error/Warning Message  | Description  |
|------------------|--|--|
| EID-6123         | The OSI request can not be completed successfully.   | A communication failure occurred.  |
| EID-6124         | The ALS recovery pulse interval is invalid.  | Refer to the error message text.   |
| EID-6125         | The ALS recovery pulse duration is invalid.  | Refer to the error message text.   |
| EID-6126         | The current setting does not support the specified ALS mode.   | Refer to the error message text.   |
| EID-6127         | All enabled routers are required to have the same area.  | Refer to the error message text.   |
| EID-6128         | A software download is in progress. Configuration changes that result in a card reboot cannot take place during a software download. Please try again after the software download is done. | Refer to the error message text.   |
| EID-6129         | The payload configuration and card mode are incompatible.  | Refer to the error message text.   |
| EID-6135         | A DCC is present.  | A data communication channel (DCC) already exists.   |
| EID-6136         | An error occurred during provisioning: {0}   | CTC was not able to provision the specified port or card.  |
| EID-6137         | Multishelf cannot be disabled. {0}   | Multishelf is not supported on equipment, is already disabled, or modules on the shelf are currently in use.                                       |
| EID-6138         | The LAN configuration is invalid.  | Verify the LAN configuration.  |
| EID-6139         | Invalid card(s) are present. Please remove all non-MSTP cards and try again.   | Non-DWDM cards cannot be added to an a DWDM node. Remove the cards.  |
| EID-6140         | The shelf identifier for a subtended shelf cannot be provisioned through CTC. It must be changed using the LCD.  | Refer to the error message text.   |
| EID-6143         | The DHCP server could not be changed.  | Refer to the error message text.   |
| EID-6144         | The port provisioning cannot be changed when the port media is Undefined.  | If the port is not pre-provisioned with the type of media that is going to be inserted, you cannot access any of the existing values for the port. |

| Error/Warning ID | Error/Warning Message  | Description  |
|------------------|--|--|
| WID-6145         | OSPF on LAN should only be enabled when the LAN routers run OSPF. Otherwise, the node will not be reachable from outside its subnet. RIP implementation only advertise routes in one direction to connected routers. It does not learn or distribute routes advertised by other routers. Also note that enabling OSPF on the LAN will temporarily cause the current list of static routes to stop being advertised to remote nodes and only be used locally. | Refer to the warning message text.   |
| WID-6146         | Deleting the protection group while in a switched state might cause a loss of traffic. It is recommended that you verify switch states before proceeding.  | Refer to the warning message text.   |
| EID-6149         | The LAPD MTU size must be greater than or equal to the {0} LSP buffer size {1}. Alternatively, you can decrease the {0} LSP buffer size to {2}.  | Refer to the error message text.   |
| EID-6150         | The value is out of range.   | Enter a value that is within the range.  |
| EID-6151         | The minimum span loss must be less than the maximum span loss.   | Refer to the error message text.   |
| EID-6152         | The "Use NTP/SNTP Server" field is checked. Enter the NTP/SNTP server IP address or server name.   | Enter the NTP/SNTP server name. To leave this field empty, uncheck the Use NTP/SNTP Server" and proceed. |
| EID-6153         | The maximum frame size is invalid.   | Refer to the error message text.   |
| EID-6154         | To combine unidirectional two-port provisioning and autonegotiation on the same port, autonegotiation must be set first.   | Refer to the error message text.   |
| EID-6155         | Transponder mode cannot be provisioned with circuits on the card.  | Refer to the error message text.   |
| EID-6156         | The transponder configuration is invalid.  | The transponder is not configured properly.  |
| EID-6157         | The watermark values are either out of range or inconsistent.  | Enter valid watermark values.  |
| EID-6179         | The 1+1 protection group is not optimized.   | Refer to the error message text.   |
| EID-6196         | The equipment has failed or is missing.  | Operation is requested on a failed or missing equipment.   |

| Error/Warning ID | Error/Warning Message   | Description  |
|------------------|---|--|
| EID-6197         | Attributes cannot be changed when the port administrative state is {0}.   | You cannot change the attributes when the port is in the specified administrative state.                 |
| WID-6204         | This action will cause the node to reboot. When provisioning in single-shelf mode, Shelf {0} of the node that you connect to must be properly preprovisioned or you will lose traffic. Use the LCD to return to single-shelf mode. CTC cannot be used for this. Changing from subtended shelf mode to single-shelf mode could be traffic-affecting. | Refer to the warning message text.   |
| EID-6205         | The interlink port is not provisioned.  | The user creates an ADM peer group without interlink ports.  |
| EID-6206         | The ADM peer group has already been created on the peer card.   | The user creates an ADM peer group involving an ADM card inserted in a peer group.                       |
| EID-6207         | This card is not in the ADM peer group.   | The selected ADM card is not involved in an ADM peer group.  |
| EID-6208         | The payload is not OTU2.  | Refer to the error message text.   |
| EID-6209         | The side is already defined by the node.  | During the creation of a side on node, a side is already defined.  |
| EID-6210         | No side was selected.   | The user requests an operation on a side, but no side is selected.                                       |
| EID-6211         | The side was not deleted.   | CTC could not delete the selected side successfully.   |
| EID-6212         | One of the ports is connected to a patchcord or virtual link.   | An operation on a port was not performed because the port is connected to a patchcord or a virtual link. |
| EID-6213         | It is not possible to associate the side to the two ports.  | During the creation of a side it is not possible to associate the selected ports to the new side.        |
| EID-6214         | The port is already assigned to a side.   | The selected port is already assigned to a side.   |
| EID-6215         | Error provisioning the CVLAN ID. Enter a valid number or range between 0 and 4094.  | The entered CVLAN ID was out of the admitted range.  |

| Error/Warning ID | Error/Warning Message  | Description  |
|------------------|--|--|
| EID-6216         | Changing card will reset the optical thresholds to the default setting and may affect the optical connection. The optical connection will work only if the optical performance is compatible with {0} card. Please check the network design. | Refer to the error message text.   |
| EID-6217         | You cannot delete the {0} {1}.   | You cannot delete {0} {1} because it is part of an ADM peer group or one or more circuits are provisioned on it. |
| EID-6218         | Invalid ethernet duplex value  | the Ethernet duplex value is invalid. Enter again.   |
| EID-6219         | Invalid committed info rate  | The committed info rate value is invalid. Enter again.   |
| EID-6220         | Invalid Ethernet speed value   | The Ethernet speed value is invalid. Enter again.  |
| EID-6221         | Invalid mtu value  | The MTU value is invalid. Enter again.   |
| EID-6222         | Invalid flow control value   | The flow control value is invalid. Enter again.  |
| EID-6223         | Invalid Network Interface Mode   | The network interface mode value is invalid. Enter again.  |
| EID-6224         | Invalid ingress COS value  | The ingress COS value is invalid. Enter again.   |
| EID-6225         | Invalid ethertype value  | The Ethertype value is invalid. Enter again.   |
| EID-6226         | Invalid buffer size value  | The Buffer size value is invalid. Enter again.   |
| EID-6227         | Invalid egress QOS value   | The egress QOS value is invalid. Enter again.  |
| EID-6228         | Invalid QinQ working Mode  | The QinQ working mode is invalid. Enter again.   |
| EID-6229         | Configured protection status Not Supported   | The protection status is not supported   |
| EID-6230         | The number of provisioned entries exceeds the limit  | Refer to the error message text.   |

| Error/Warning ID | Error/Warning Message  | Description  |
|------------------|--|--|
| EID-6231         | This is not a valid VLAN ID.   | Entered VLAN ID is not present in the database file.                 |
| EID-6232         | The VLAN remapping ID is not allowed.  | Refer to the error message text.                                     |
| EID-6233         | The CVLAN is duplicated.   | You cannot have identical CVLAN IDs.                                 |
| EID-6234         | The VLAN ID is out of range.   | The VLAN ID entered is out of range.                                 |
| EID-6235         | This is not a valid VLAN name.   | The entered VLAN name exceeds the number of characters (32) allowed. |
| EID-6236         | The protected VLAN number exceeds the maximum allowed.   | The user enters more than 256 protected VLAN in the VLAN database.   |
| EID-6237         | The port is not in OOS disabled admin state  | Refer to the error message text.                                     |
| EID-6238         | The VLAN ID is in use.   | The entered VLAN ID is in use by a node.                             |
| EID-6239         | APC wrong node side.   | Refer to the error message text.                                     |
| EID-6240         | You cannot change the Admin State for an interlink port when it is part of an ADM peer group. This operation is not supported. | Refer to the error message text.                                     |
| EID-6242         | The protection slot is invalid.  | You must select a valid protection slot.                             |
| EID-6243         | The {0} address of {1} is invalid.   | Refer to the error message text.                                     |
| EID-6244         | The mask of {0} is invalid.  | The mask of the specified value is not valid.                        |
| EID-6245         | The cost must be between 1 and 32767.  | Refer to the error message text.                                     |
| EID-6246         | The {0} address cannot be {1}.   | Refer to the error message text.                                     |
| EID-6247         | The authentication type is invalid.  | Enter a valid authentication type.                                   |
| EID-6248         | The cost must between 1 and 15.  | Refer to the error message text.                                     |
| EID-6249         | The port has a cross-connect.  | Refer to the error message text.                                     |
| EID-6250         | The reversion time is invalid.   | The reversion time is invalid. Enter again.                          |

| Error/Warning ID | Error/Warning Message   | Description   |
|------------------|---|---|
| EID-6251         | Invalid Margin For Span Aging. Value is not in the range 0 - 10.  | Enter a value between 0 and 10.                               |
| EID-6252         | The data cannot be retrieved because ANS parameters cannot be calculated on the node in its current configuration.  | Refer to the error message text.                              |
| EID-6253         | Invalid Margin For Span Aging.  | Refer to the error message text.                              |
| EID-6254         | SDH mode does not support timing references.  | Timing reference is not supported by SDH mode.                |
| EID-6255         | Only DS1 interfaces with ESF line types support timing references.  | Refer to the error message text.                              |
| EID-6256         | sendDoNotUse and sendDoNotUseFF are mutually exclusive.   | Refer to the error message text.                              |
| EID-6257         | The termination is already in use.  | Refer to the error message text.                              |
| EID-6258         | The side is carrying services or traffic.   | Refer to the error message text.                              |
| EID-6259         | A pluggable module on Port 22 remains unmanaged.  | Refer to the error message text.                              |
| EID-6260         | You cannot delete this port. There was a severe architectural error related to the index of the pluggable trunk port object. Please contact technical support for assistance. | Refer to the error message text.                              |
| EID-6261         | This is not a valid VLAN ID. The VLAN database is empty.  | The user adds a row without a valid VLAN database loaded.     |
| EID-6263         | The equipment requires two slots.   | The user provisions a double footprint card in a single slot. |
| EID-6264         | The patchcord is duplicated.  | Refer to the error message text.                              |
| EID-6265         | The wavelength is in use by an OCH trail, a virtual link, or an internal patchcord.   | Refer to the error message text.                              |
| EID-6266         | The card cannot be changed because the port has not been provisioned.   | Refer to the error message text.                              |
| EID-6267         | Each port can have a maximum of 8 MAC addresses.  | Refer to the error message text.                              |
| EID-6268         | This server trail does not have a valid start or end.   | Refer to the error message text.                              |
| EID-6269         | The maximum number of server trails is 3743.  | Refer to the error message text.                              |



| Error/Warning ID | Error/Warning Message   | Description  |
|------------------|---|--|
| EID-6270         | A unique server trail ID could not be allocated.  | Refer to the error message text.   |
| EID-6271         | The server trail already exists.  | Refer to the error message text.   |
| EID-6272         | The server trail size must not exceed the port bandwidth.   | Refer to the error message text.   |
| EID-6273         | An OCH Trail circuit is active on the trunk port. To modify the ITU-T G.709 parameter, the circuit must be out of service.  | Refer to the error message text.   |
| EID-6274         | Unable to restore this database: The software version cannot be obtained from the node. Please try again.   | The user tries to restore a database on a node, but its not possible to get the software version from it.  |
| EID-6275         | You cannot change this parameter. The port is part of an active circuit.  | Certain parameters like Port Rate and Admin State cannot be changed when the port is part is part of an active circuit. Delete all the circuits on the port before changing admin state of the port. |
| EID-6276         | APC is disabled. APC Correction Skipped. Override cannot be performed.  | Refer to the error message text.   |
| EID-6277         | There are no alarm conditions available to run APC Correction Skipped Override.   | Refer to the error message text.   |
| EID-6278         | APC Correction Skipped Override is not supported for this card.   | Refer to the error message text.   |
| EID-6279         | Protection cannot be disabled when the FPAS alarm is active.  | Refer to the error message text.   |
| WID-6280         | Any configuration change will be lost and the operation is traffic affecting.   | Refer to the error message text.   |
| EID-6281         | The port is involved in a protection group. The protected port is not in the {0} administrative state   | Change the port state to administrative.   |
| WID-6282         | Forcing FPGA update will be traffic-affecting.  | Refer to the error message text.   |
| WID-6283         | Enabling ALS on a DWDM trunk port that is connected to a channel filter will result in a conflict with the ALS on the amplifier card or with the VOA startup process. Is it OK to continue? | Refer to the error message text.   |

| Error/Warning ID | Error/Warning Message  | Description   |
|------------------|--|---|
| WID-6284         | Changing the timing standard will re-initialize the shelf timing and might affect traffic. OK to continue?   | Refer to the error message text.  |
| WID-6285         | Since you are changing the IP address of one node containing some PPC terminations, you are also requested to run the PPC Repair tool in order to fix the IP addresses stored in the nodes connected by these PPCs | Refer to the error message text.  |
| EID-6286         | The port type cannot be changed because the port has been deleted.   | Refer to the error message text.  |
| EID-6287         | You cannot edit the {0} {1}.   | Port rate of Optical and Electrical ports cannot be changed while circuits are provisioned on them. |
| EID-6288         | The BERT configuration is invalid.   | Refer to the error message text.  |
| EID-6289         | The BERT mode is not yet configured  | Refer to the error message text.  |
| WID-6290         | The BERT mode is configured in unframed format   | Refer to the error message text.  |
| WID-6291         | Port has circuits; configuring the BERT mode will disrupt normal traffic.  | Refer to the error message text.  |
| EID-6292         | The alarm type name cannot exceed 20 characters  | Refer to the error message text.  |
| EID-6294         | The alarm type name contains invalid characters. Only the following characters are valid: 0-9, A-z, a-z and "-".   | Refer to the error message text.  |
| EID-6295         | The alarm type is in use and cannot be deleted.  | Refer to the error message text.  |
| EID-6296         | Maximum number of alarm types that can be added cannot exceed 50.  | Refer to the error message text.  |
| EID-6297         | Hard coded alarm types cannot be deleted.  | Refer to the error message text.  |
| EID-6298         | The alarm type already exists.   | Refer to the error message text.  |
| EID-6299         | The alarm type does not exist.   | Refer to the error message text.  |
| EID-6300         | Selective auto negotiation is allowed only when selected speed and duplex modes are non-auto. Click "Reset" to revert the changes.   | Refer to the error message text.  |
| WID-6301         | Selective auto negotiation applies only to copper SFPs.  | Refer to the error message text.  |

| Error/Warning ID | Error/Warning Message  | Description   |
|------------------|--|---|
| EID-6302         | Users are not allowed to perform this operation.   | When logged in as a maintenance user provisioning operation is not allowed. |
| EID-6303         | The ITU-T G.709 configuration cannot be disabled when Fast Protection is enabled.  | Refer to the error message text.  |
| EID-6304         | Users are not allowed to perform this operation.   | Refer to the error message text.  |
| EID-6305         | The view could not be deleted.   | Refer to the error message text.  |
| EID-6306         | The ITU-T G.709 configuration cannot be disabled when Fast Protection is enabled.  | Refer to the error message text.  |
| WID-6307         | You have only selected one trunk-to-trunk patchcord. For complete deletion, you must select both patchcords that are attached to the 10GE_XP/GE_XP cards. Do you want to continue? | Refer to the warning message text.  |
| WID-6308         | You have only selected one trunk-to-OCH patchcord. For complete deletion, you must select both patchcords that are attached to the TXP/MXP card. Do you want to continue?          | Refer to the warning message text.  |
| EID-6309         | OCHNC circuits, OSC terminations, synchronization sources and protection groups must be removed before you can remove this patchcord.  | Refer to the error message text.  |
| EID-6310         | The Committed Info Rate value must be in range [0-100].  | Refer to the error message text.  |
| EID-6311         | The MTU value must be in range [64-9700].  | Refer to the error message text.  |
| EID-6312         | The multicast IP address must be in range [224.0.0.0 - 239.255.255.255] Excluding the following IP address subranges [(224-239).(0/128).0.(0-255)]                                 | Refer to the error message text.  |
| EID-6313         | The multicast IP address count must be in range [1-256]  | Refer to the error message text.  |
| EID-6314         | Could not retrieve TTY session for the chosen CRS.   | Refer to the error message text.  |
| EID-6315         | CRS provisioning failed. {0}   | Refer to the error message text.  |
| EID-6316         | The chosen node is not a CRS-1.  | Refer to the error message text.  |
| EID-6317         | The value specified for IPv6 Address or IPv6 Default Router is invalid.  | Refer to the error message text.  |

| Error/Warning ID | Error/Warning Message  | Description                        |
|------------------|--|------------------------------------|
| EID-6318         | The value specified for Prefix Length is invalid. Valid range of values is 0 to 128.   | Refer to the error message text.   |
| EID-6319         | IPv6 mode can be enabled only if SOCKS and firewall are enabled on the node.   | Refer to the error message text.   |
| EID-6320         | IPv6 mode cannot be enabled on a node if RIP is enabled.   | Refer to the error message text.   |
| EID-6321         | IPv6 mode cannot be enabled on a node if 'OSPF on LAN' is enabled.   | Refer to the error message text.   |
| EID-6322         | IPv6 Address cannot be specified for {0} when IPv6 mode is not enabled on the node.  | Refer to the error message text.   |
| EID-6323         | CTC was unable to delete SnmpV3 Target.  | Refer to the error message text.   |
| EID-6324         | The card mode is invalid in this configuration.  | Refer to the error message text.   |
| EID-6325         | SW version mismatch on node {0}: found {1}, expected {2}.  | Refer to the error message text.   |
| EID-6326         | The CRS node {0} version[{1}] is greater than the supported version[{2}]. The creation of ochtrail circuits between CRS nodes will not be disabled, but there could be unexpected behaviors.                       | Refer to the error message text.   |
| EID-6327         | The end point of patchcord have an incompatible wavelength.  | Refer to the error message text.   |
| EID-6329         | Protection/AIS action cannot be both set to squelch.   | Refer to the error message text.   |
| EID-6330         | The node failed to restart the Pseudo IOS CLI service on the selected port. Try using another unreserved port that is not being used within the 1024 - 65535 range.  | Refer to the error message text.   |
| EID-6331         | That port is already in use. Also note that the Pseudo IOS port may not be changed if any Pseudo IOS connections are currently open.   | Refer to the error message text.   |
| WID-6332         | All previously configured IPv6 destinations will become unreachable if IPv6 mode is disabled. It is recommended that you remove all IPv6 related provisioning before disabling IPv6 mode. Do you want to continue? | Refer to the warning message text. |
| WID-6333         | The NE default {0} not available in the selected NE Defaults Tree.   | Refer to the warning message text. |

| Error/Warning ID | Error/Warning Message   | Description                        |
|------------------|---|------------------------------------|
| WID-6334         | Could not find the NE default {0}.  | Refer to the warning message text. |
| WID-6335         | CTC was unable to create a new Target account.  | Refer to the warning message text. |
| WID-6336         | Changing the card to EFEC mode will cause the ports 1 and 2 to be disabled. Do you want to continue?  | Refer to the warning message text. |
| WID-6337         | CE-MR-10/CE-MR-6 card does not validate the Ethernet FCS when traffic is received from optical side. This can result in errored frames from optical side being forwarded to the peer device via front ports. It would be left to the peer device to detect the errors and discard the frames. It is suggested to enable the FCS option on both ends of the circuit. The GFP FCS will be used to discard errored frames. The discarded frames will be accounted under the performance pane for the POS port. | Refer to the warning message text. |
| WID-6338         | Ingress COS setting is not compatible with QinQ mode.   | Refer to the warning message text. |
| WID-6339         | Some circuits may become partial as part of this upgrade and would need to be reconfigured.   | Refer to the warning message text. |
| WID-6340         | One or more QinQ rules have not been deleted because they are not related to the current circuit.   | Refer to the warning message text. |
| WID-6341         | The Functional view on {0} is disabled.   | Refer to the warning message text. |
| WID-6342         | Changing the {0} settings might be traffic affecting. Do you want to continue?  | Refer to the warning message text. |
| WID-6343         | The selected file name is too long. File names (including the full path) must be less than 254 characters. Please enter a valid file name.  | Refer to the warning message text. |
| EID-6344         | It is detected a shelf mismatch condition.  | Refer to the error message text.   |
| EID-6345         | The line termination is invalid.  | Refer to the error message text.   |
| EID-6346         | The overhead is not supported.  | Refer to the error message text.   |
| EID-6347         | A patchcord was expected for a successful operation.  | Refer to the error message text.   |
| EID-6348         | A Virtual link already exists on the same path.   | Refer to the error message text.   |
| EID-6349         | The overhead creation has failed.   | Refer to the error message text.   |
| EID-6350         | The unprotected line is not present   | Refer to the error message text.   |

| Error/Warning ID | Error/Warning Message   | Description                      |
|------------------|---|----------------------------------|
| EID-6351         | The port status is active.  | Refer to the error message text. |
| EID-6352         | IPv4 access cannot be disabled when IPv6 mode is not enabled on the node.   | Refer to the error message text. |
| EID-6353         | IPv4 access cannot be disabled when the node is in Multishelf configuration.  | Refer to the error message text. |
| EID-6354         | Disabling IPv4 access may lead to loss of communication with the node. Make the change anyway?                            | Refer to the error message text. |
| EID-6355         | IPv6 access cannot be disabled when IPv4 Access is disabled on the node.  | Refer to the error message text. |
| EID-6356         | Multishelf configuration cannot be enabled when IPv4 Access is disabled on the node.                                      | Refer to the error message text. |
| EID-6357         | The Multicast SVLAN field can be modified only when the MVR feature is disabled.  | Refer to the error message text. |
| EID-6358         | Too many TRANSLATE QinQ rules per port with MVR feature enabled.  | Refer to the error message text. |
| EID-6359         | The PLIM {0} is part of an OCH Trail circuit and its configuration cannot be changed.                                     | Refer to the error message text. |
| EID-6360         | The fiber cut restore operation did not succeed on {1}. {0}   | Refer to the error message text. |
| EID-6361         | The resource is already in use, please retry later.   | Refer to the error message text. |
| EID-6362         | Request timed out, please retry.  | Refer to the error message text. |
| EID-6363         | An internal communication error was encountered while retrieving values. Please retry.                                    | Refer to the error message text. |
| EID-6364         | Could not perform the requested operation because of a CRS communication error.   | Refer to the error message text. |
| EID-6365         | Could not perform the requested operation on PLIM {0} because that port is already in an LMP data link with neighbor {1}. | Refer to the error message text. |
| EID-6366         | The IP address {0} was not found in the CRS ARP table.  | Refer to the error message text. |

| Error/Warning ID | Error/Warning Message   | Description                      |
|------------------|---|----------------------------------|
| WID-6367         | This operation will also change the CRS configuration.<br>Is it OK to continue?   | Refer to the error message text. |
| WID-6368         | This operation will also change the Router configuration.<br><br>Moreover, it requires the PLIM shutdown and may be SERVICE AFFECTING.<br><br>Is it OK to continue?   | Refer to the error message text. |
| EID-6369         | The rollback operation has failed.  | Refer to the error message text. |
| EID-6370         | The requested operation is not authorized on {0}.<br>Please check task privileges.  | Refer to the error message text. |
| WID-6371         | Since you have changed the IP address of one node containing Server Trail terminations, you should also fix the IP addresses stored in the nodes connected by these Server Trails.<br><br>Run the Server Trail Repair tool to fix these IP addresses. | Refer to the error message text. |
| EID-6372         | A Server Trail with the requested ID and old peer IP Address does not exist.  | Refer to the error message text. |
| WID-6373         | AIS Squelch action(a link Integrity attribute) should not be simultaneously set   | Refer to the error message text. |
| EID-6374         | The selected SVLAN is already used for MVR.   | Refer to the error message text. |
| EID-6375         | Missing L2 internal patchcords between XP cards.  | Refer to the error message text. |
| EID-6376         | Profile cannot be mapped because the SVLAN is not enabled on the port.  | Refer to the error message text. |
| EID-6377         | The configuration must be applied on the working interface in case of protection group.   | Refer to the error message text. |
| EID-6378         | Squelch protection action and Auto mode are not compatible in case of L2 1+1.   | Refer to the error message text. |
| EID-6379         | The NTP/SNTP server and the Backup NTP/SNTP servers cannot be the same.   | Refer to the error message text. |
| EID-6380         | Multishelf VLAN range must be in range of {0} to {1}.   | Refer to the error message text. |

| Error/Warning ID | Error/Warning Message  | Description                      |
|------------------|--|----------------------------------|
| WID-6381         | Changing the OTU2_XP card mode to 10GE LAN to WAN will reboot the card.<br>Do you want to continue?  | Refer to the error message text. |
| WID-6382         | Changing the OTU2_XP card mode from 10GE LAN to WAN will reboot the card and delete the pluggable ports 1 and 3.<br>Do you want to continue? | Refer to the error message text. |
| EID-6383         | The board is busy.<br>Please retry later.  | Refer to the error message text. |
| EID-6384         | The value "{0}" must be between {1} and {2}.   | Refer to the error message text. |
| EID-6385         | The value "{0}" has too many decimal points [xx.0 .. xx.9].  | Refer to the error message text. |
| EID-6386         | The value "{0}" must be a float between {1} and {2}.   | Refer to the error message text. |
| EID-6387         | The value "{0}" must be a integer between {1} and {2}.   | Refer to the error message text. |
| EID-6388         | "{0}" is not a valid enumerated value.   | Refer to the error message text. |
| EID-6389         | Power fail low TCA is greater than high TCA.   | Refer to the error message text. |
| EID-6390         | Error while setting DISABLE FEC on {0}.  | Refer to the error message text. |
| EID-6391         | Error while setting STANDARD FEC on {0}.   | Refer to the error message text. |
| EID-6392         | Error while setting ENHANCED FEC on {0}.   | Refer to the error message text. |
| EID-6393         | Error while setting SD BER on {0}.   | Refer to the error message text. |
| EID-6394         | The maximum number of CVLAN ranges cannot exceed 48 in selective QinQ mode.  | Refer to the error message text. |
| EID-6397         | Unable to update the FPGA as the STANBY CTX is not ready.  | Retry later.                     |
| EID-6398         | Unable to update the FPGA as the database is busy saving recent modifications.   | Retry later.                     |
|                  |  |                                  |
|                  |  |                                  |
|                  |  |                                  |
|                  |  |                                  |
|                  |  |                                  |
|                  |  |                                  |



| Error/Warning ID | Error/Warning Message  | Description  |
|------------------|--|--|
| EID-6547         | Valid License is not available on this card.   | Retry after installing a permanent license.                  |
| EID-6548         | License Operation Error.   | Refer to the error message text.                             |
| EID-6549         | License is not supported.  | The license you are installing is not supported on the card. |
| EID-6550         | The Product ID of the card does not support Licensing.   | Licensing is not supported on the card.                      |
| EID-6551         | The card is not in provisioned state, hence this license data cannot be fetched currently  | Retry after the card is provisioned.                         |
| EID-6552         | License operation failed due to Communication failure with the line card.  | Check if the line card is installed correctly.               |
| EID-6553         | License file size has exceeded the limit   | Refer to the error message text.                             |
| EID-6601         | The client ports are provisioning on the ports before deleting.  | Refer to the error message text.                             |
| EID-6602         | Incompatible Operating Mode is provisioned.<br>The Following Operating Modes are not Compatible:<br>Transponder (4GFC TXP) with 8GFC Transponder (8GFC TXP). | Refer to the error message text.                             |

