



Monitoring Ethernet Operations, Administration, and Maintenance Tool Properties

The following topics describe how you can use Cisco Prime Network Vision (Prime Network Vision) to monitor Ethernet operations, administration, and maintenance (OAM) tools:

- [User Roles Required to View Ethernet OAM Tool Properties, page 15-1](#)
- [Ethernet OAM Overview, page 15-2](#)
- [Viewing Connectivity Fault Management Properties, page 15-3](#)
- [Viewing Ethernet LMI Properties, page 15-10](#)
- [Viewing Link OAM Properties, page 15-14](#)
- [Configuring CFM, page 15-18](#)
- [Configuring E-LMI, page 15-20](#)
- [Configuring L-OAM, page 15-21](#)

User Roles Required to View Ethernet OAM Tool Properties

This topic identifies the roles that are required to view Ethernet OAM tool properties. Prime Network determines whether you are authorized to perform a task as follows:

- For GUI-based tasks (tasks that do not affect elements), authorization is based on the default permission that is assigned to your user account.
- For element-based tasks (tasks that do affect elements), authorization is based on the default permission that is assigned to your account. That is, whether the element is in one of your assigned scopes and whether you meet the minimum security level for that scope.

For more information on user authorization, see the [Cisco Prime Network 4.0 Administrator Guide](#).

The following tables identify the tasks that you can perform:

- [Table 15-1](#) identifies the tasks that you can perform if a selected element **is not in** one of your assigned scopes.
- [Table 15-2](#) identifies the tasks that you can perform if a selected element **is in** one of your assigned scopes.

By default, users with the Administrator role have access to all managed elements. To change the Administrator user scope, see the topic on device scopes in the [Cisco Prime Network 4.0 Administrator Guide](#).

Table 15-1 *Default Permission/Security Level Required for Viewing Ethernet OAM Tool Properties - Element Not in User's Scope*

Task	Viewer	Operator	OperatorPlus	Configurator	Administrator
View CFM properties	—	—	—	—	X
View Ethernet LMI properties	—	—	—	—	X
View Link OAM properties	—	—	—	—	X
Using CFM Configure and Enable Commands	—	—	—	X	X
Using E-LMI Configure and Enable Commands	—	—	—	X	X
Using L-OAM Configuration, Assign, Enable, and Show Commands	—	—	—	X	X

Table 15-2 *Default Permission/Security Level Required for Viewing Ethernet OAM Tool Properties - Element in User's Scope*

Task	Viewer	Operator	OperatorPlus	Configurator	Administrator
View CFM properties	X	X	X	X	X
View Ethernet LMI properties	X	X	X	X	X
Using CFM Configure and Enable Commands	—	—	—	X	X
Using E-LMI Configure and Enable Commands	—	—	—	X	X
Using L-OAM Configuration, Assign, Enable, and Show Commands	—	—	—	X	X

Ethernet OAM Overview

Prime Network Vision supports three, interrelated OAM components, including:

- **Connectivity Fault Management**—Connectivity Fault Management (CFM) is an end-to-end per-service-instance (per VLAN) Ethernet layer OAM protocol that includes connectivity monitoring, fault verification, and fault isolation. CFM allows you to manage individual customer service instances. Ethernet Virtual Connections (EVCs) are the services that are sold to customers and are designated by service VLAN tags. CFM operates on a per-service-VLAN (or per-EVC) basis. It lets you know when an EVC fails and provides tools to isolate the failure. See [Viewing Connectivity Fault Management Properties, page 15-3](#) and [Configuring CFM, page 15-18](#).

- **Ethernet Local Management Interface**—Ethernet Local Management Interface (Ethernet LMI) operates between the customer edge (CE) and the user-facing provider edge (U-PE) devices. Ethernet LMI allows you to automatically provision CEs based on EVCs and bandwidth profiles. See [Viewing Ethernet LMI Properties, page 15-10](#) and [Configuring E-LMI, page 15-20](#).
- **Link OAM**—Link OAM allows you to monitor and troubleshoot a single Ethernet link. It is an optional sublayer implemented in the Data Link Layer between the Logical Link Control (LLC) and MAC sublayers of the Open Systems Interconnect (OSI) model. You can monitor a link for critical events and, if needed, put a remote device into loopback mode for link testing. Link OAM also discovers unidirectional links, which are created when one transmission direction fails. See [Viewing Link OAM Properties, page 15-14](#) and [Configuring L-OAM, page 15-21](#).

Viewing Connectivity Fault Management Properties

CFM allows you to discover and verify end-to-end, Carrier Ethernet PE-to-PE or CE-to-CE paths through bridges and LANs.

CFM consists of maintenance domains. Maintenance domains are administrative regions used to manage and administer specific network segments. Maintenance domains are organized in a hierarchy. The administrator assigns a maintenance level to the domain from 0 (lowest level) to 7 (highest level); the maintenance level determines the domain's position within the CFM hierarchy.

CFM maintenance domain boundaries are indicated by maintenance points. A maintenance point is an interface point that participates within a CFM maintenance domain. Maintenance point types include:

- **Maintenance Endpoints**—Maintenance endpoints (MEPs) are active CFM elements residing at the edge of a domain. MEPs can be inward or outward facing. They periodically transmit continuity check messages and expect to periodically receive similar messages from other MEPs within a domain. If requested, MEPs can also transmit traceroute and loopback messages. MEPs are responsible for keeping CFM messages within the boundaries of a maintenance domain.
- **Maintenance Intermediate Points**—Maintenance intermediate points (MIPs) are passive elements that catalog information received from MEPs and other MIPs. MIPs only respond to specific CFM messages such as traceroute and loopback, and they forward those messages within the maintenance domain.



Note

Prime Network Vision does not display information for CFM maintenance endpoints or maintenance intermediate points for Cisco Viking devices if errors exist in their configurations. An error in the configuration is indicated by an exclamation point (!) in the CLI output.

For example, if you enter the command `show ethernet cfm local maintenance-points`, a configuration error is indicated as follows:

```
cfm_d100/2          cfm_s100          Te0/2/0/3.110          Up MEP 2100 eb:7a:53!
```

CFM uses standard Ethernet frames. CFM frames are distinguishable by EtherType and for multicast messages, by MAC address. CFM frames are sourced, terminated, processed, and relayed by bridges. Routers support only limited CFM functions.

Bridges that cannot interpret CFM messages forward them as normal data frames. All CFM messages are confined to a maintenance domain and to an S-VLAN (PE-VLAN or Provider-VLAN). CFM supports three types of messages:

- Continuity check—Multicast heartbeat messages exchanged periodically among MEPs. They allow MEPs to discover other MEPs within a domain and allow maintenance intermediate points (MIPs) to discover MEPs. Continuity check messages (CCMs) are confined to a domain and S-VLAN.
- Loopback—Unicast frames that a MEP transmits, at the request of an administrator, to verify connectivity to a particular maintenance point. A reply to a loopback message indicates whether a destination is reachable but does not allow hop-by-hop discovery of the path. A loopback message is similar in concept to an Internet Control Message Protocol (ICMP) Echo (ping) message.
- Traceroute—Multicast frames that a MEP transmits, at the request of an administrator, to track the path (hop-by-hop) to a destination MEP. They allow the transmitting node to discover vital connectivity data about the path, and allow the discovery of all MIPs along the path that belong to the same maintenance domain. For each visible MIP, traceroute messages indicate ingress action, relay action, and egress action. Traceroute messages are similar in concept to User Datagram Protocol (UDP) traceroute messages.

From the Logical Inventory tree, you can troubleshoot MEPs using CFM ping, traceroute, MEP status, and MEP cross-check status. These commands, and all CFM commands, are described in [Configuring CFM, page 15-18](#).

Prime Network associates alarms with the corresponding MEP or global CFM logical inventory objects. Prime Network correlates MEP down, MEP up, MEP missing, ETH-AIS, and ETH-RDI events with root cause alarms and corresponding tickets that exist along the path between the MEP on the reporting network element and the network element hosting the remote MEP.

To view CFM properties:

Step 1 In Prime Network Vision, double-click the required device for CFM.

Step 2 In the inventory window, choose **Logical Inventory > CFM**.

[Figure 15-1](#) shows an example of CFM in logical inventory.

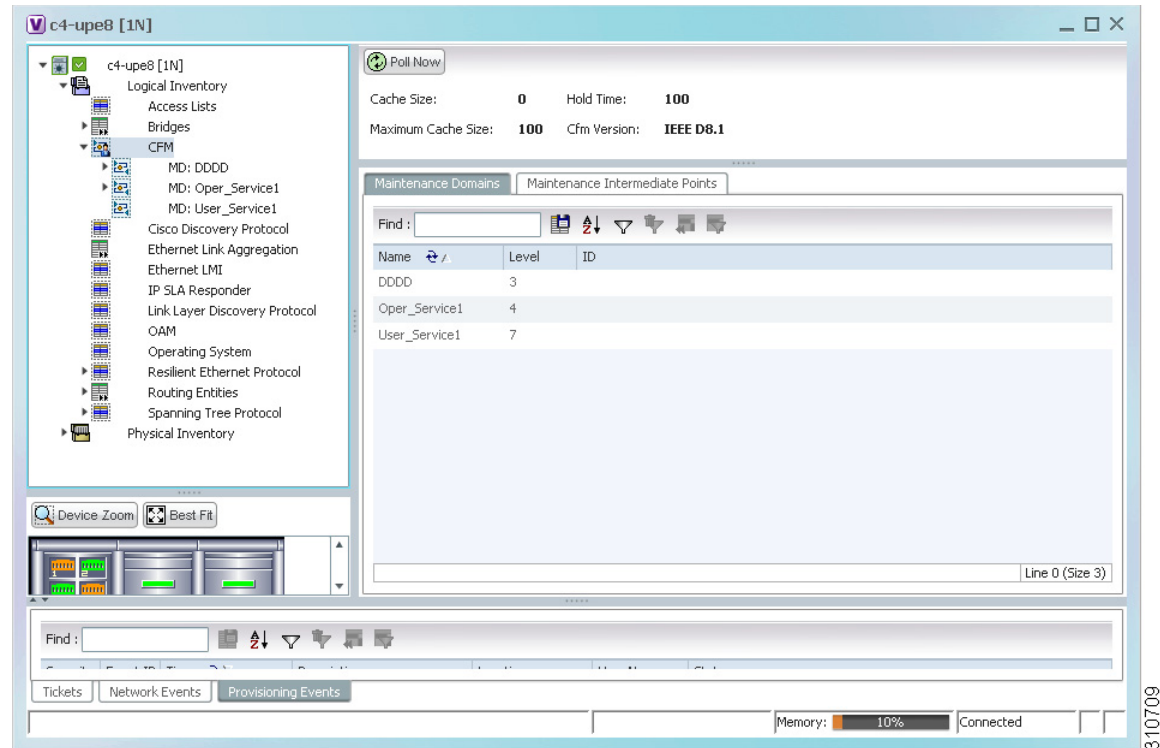
Figure 15-1 CFM in Logical Inventory

Table 15-3 describes the information displayed for CFM.

Table 15-3 CFM Properties

Field	Description
Cache Size	CFM traceroute cache size in number of lines.
Hold Time	Configured hold time (in minutes) that is used to indicate to the receiver the validity of traceroute and loopback messages transmitted by the device. The default value is 2.5 times the transmit interval.
Maximum Cache Size	Maximum CFM traceroute cache size in number of lines.
CFM Version	CFM version, such as IEEE D8.1.
Maintenance Domains Table	
Name	Domain name.
Level	Unique level the domain is managed on. Values range from 0 to 7.
ID	Optional domain identifier.

Step 3 Click the Maintenance Intermediate Points tab to view MIP information. See Figure 15-2.

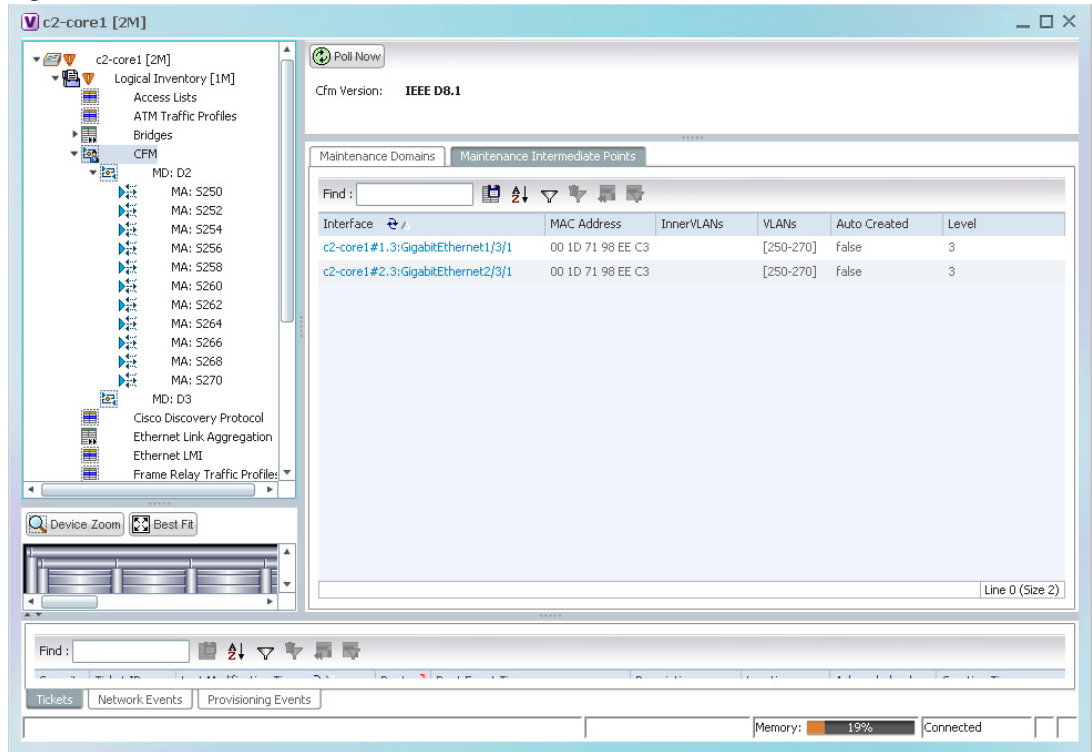
Figure 15-2 CFM Maintenance Intermediate Points Tab

Table 15-4 describes the information that is displayed in the Maintenance Intermediate Points table.

Table 15-4 CFM Maintenance Intermediate Point Properties

Field	Description
Interface	Interface configured as a MIP, hyperlinked to its entry in physical inventory.
MAC Address	MAC address of the interface.
Inner VLANs	Inner VLAN identifiers.
VLANs	VLANs associated with the interface.
Auto Created	Whether or not the MIP was automatically created: True or False.
Level	Unique level the domain is managed on. Values range from 0 to 7.

Step 4 To view the details of a specific maintenance domain, do one of the following:

- Choose **Logical Inventory** > **CFM** > *domain*.
- Double-click the required entry in the Maintenance Domains table.

Figure 15-3 shows an example of the information displayed for the maintenance domain.

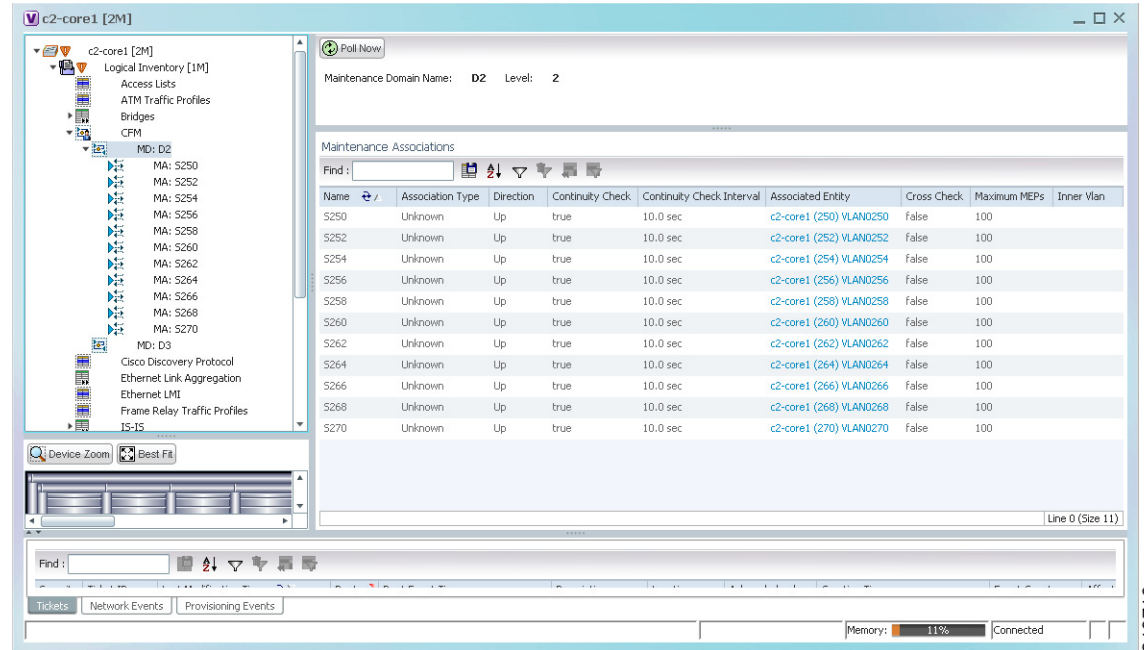
Figure 15-3 CFM Maintenance Domain Properties

Table 15-5 describes the information that is displayed for CFM maintenance domains.

Table 15-5 CFM Maintenance Domain Properties

Field	Description
Maintenance Domain Name	Name of the domain.
Level	Level at which the domain is managed: 0-7.
ID	Optional maintenance domain identifier.
Maintenance Associations Table	
Name	Name of the maintenance association.
Association Type	Maintenance association type.
Direction	Direction of the maintenance association: Up or Down.
Continuity Check	Whether or not the continuity check is enabled: True or False.
Continuity Check Interval	Interval (in seconds) for checking continuity.
Associated Entity	Bridge, port, or pseudowire that the maintenance association uses for CFM. Click the hyperlinked entry to view the item in inventory.
Cross Check	Whether or not cross checking is enabled: True or False.
Maximum MEPs	Maximum number of maintenance endpoints (MEPs) that can be configured on the maintenance association.
Inner VLAN	Inner VLAN identifier.

Step 5 To view the properties for a maintenance association's endpoints, do one of the following:

- Choose **Logical Inventory** > **CFM** > *domain* > *association*.
- In the Maintenance Associations table, double-click the required association.

Figure 15-4 shows the information displayed for the maintenance association endpoints.

Figure 15-4 CFM Maintenance Association - Endpoint Properties

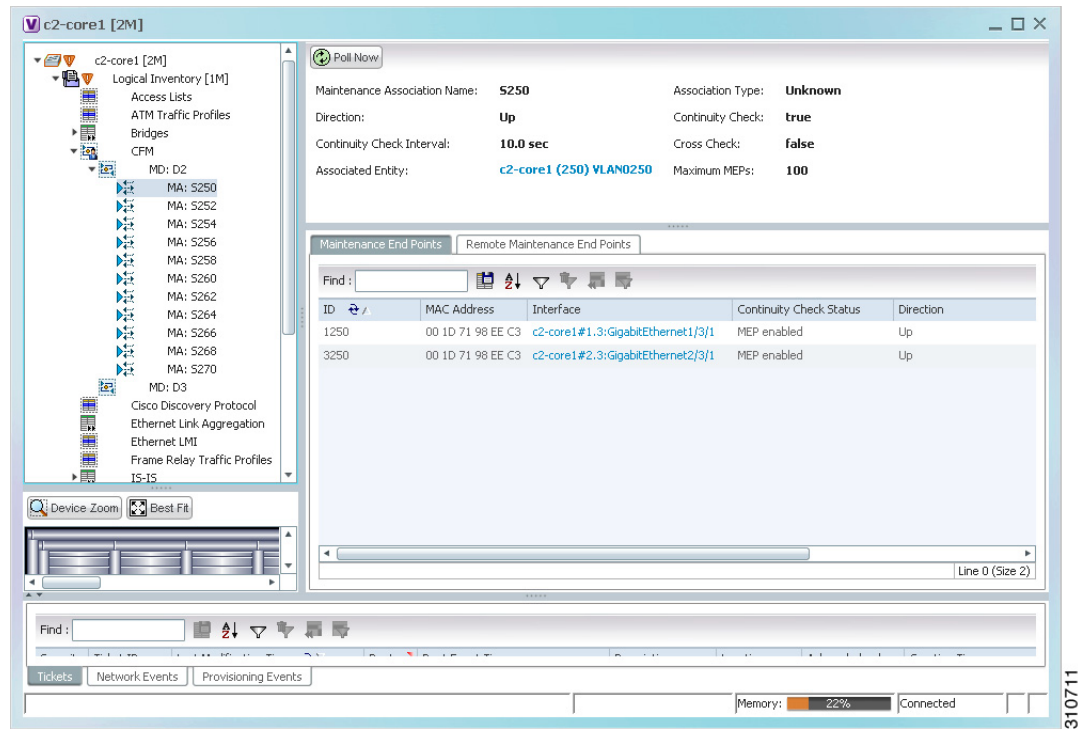


Table 15-6 describes the information that is displayed for CFM maintenance associations and MIPs.

Table 15-6 CFM Maintenance Association Properties

Field	Description
Maintenance Association Name	Name of the maintenance association.
Association Type	Maintenance association type, such as Bridge Domain.
Direction	Direction of the maintenance association: Up or Down.
Continuity Check	Whether or not the continuity check is enabled: True or False.
Continuity Check Interval	Interval (in seconds) for checking continuity.
Cross Check	Whether or not cross checking is enabled: True or False.
Associated Entity	Bridge that the maintenance association uses for CFM. Click the hyperlinked entry to view the bridge in logical inventory.
Maximum MEPs	Maximum number of MEPs that can be configured on the maintenance association.
Inner VLANs	Inner VLAN identifiers.
Maintenance End Points Table	
ID	Local identifier for the MEP.
MAC Address	MAC address that identifies the MEP.

Table 15-6 CFM Maintenance Association Properties (continued)

Field	Description
Interface	Interface on which the MEP is configured, hyperlinked to the respective EFP, VSI or interface in inventory.
Continuity Check Status	CFM continuity check status: MEP Active, MEP Inactive, MEP Enabled, MEP Disabled, or Unknown.
Direction	Direction of traffic on which the MEP is defined: Up, Down, or Unknown.

Step 6 Click the **Remote Maintenance End Points** tab to view the information displayed for remote MEPs. See [Figure 15-5](#).

Figure 15-5 Remote Maintenance End Points Table

The screenshot displays the Cisco Prime Network 4.0 interface for device **c2-core1 [2M]**. The left sidebar shows a logical inventory tree with categories like Access Lists, ATM Traffic Profiles, Bridges, CFM, and MDs. The main panel shows the **Remote Maintenance End Points** tab. Above the table, key properties for the selected Maintenance Association (MA: S250) are displayed: Direction: Up, Continuity Check Interval: 10.0 sec, Associated Entity: c2-core1 (250) VLAN0250, Association Type: Unknown, Continuity Check: true, Cross Check: false, and Maximum MEPs: 100. The table below lists three active MEPs:

MEP ID	Level	Status	MAC Address	Local MEP ID
2250	2	MEP active	00 24 50 E4 4C 00	
2350	2	MEP active	00 21 56 3F 73 00	
2450	2	MEP active	00 24 C3 C6 7E 80	

The bottom of the interface shows a status bar with 'Memory: 11%' and 'Connected'.

282959

Table 15-7 describes the information presented for remote MEPs.

Table 15-7 CFM Remote Maintenance End Points Table

Field	Description
MEP ID	Remote MEP identifier.
Level	Level at which the remote MEP is managed: 0-7.
Status	Status of the remote MEP, such as MEP Active.
MAC Address	MAC address of the remote MEP.
Local MEP ID	Numeric identifier assigned to the local MEP. Values range from 1 to 8191. Note If the remote MEP is in Up mode, the remote MEP is not associated to the local MEP. As a result, the Local MEP ID column is empty.

Viewing Ethernet LMI Properties

Ethernet Local Management Interface (E-LMI) is a protocol that operates between the customer edge (CE) network element and the provider edge (PE) network element. Ethernet LMI is a protocol between the CE network element and the provider edge (PE) network element. It runs only on the PE-CE UNI link and notifies the CE of connectivity status and configuration parameters of Ethernet services available on the CE port. Ethernet LMI interoperates with an OAM protocol, such as CFM, that runs within the provider network to collect OAM status. CFM runs at the provider maintenance level. Ethernet LMI relies on the OAM Ethernet Infrastructure (EI) to work with CFM for end-to-end status of EVCs across CFM domains. E-LMI commands are described in [Configuring E-LMI, page 15-20](#).

The IOS OAM manager streamlines interaction between OAM protocols, and handles the interaction between CFM and E-LMI. Ethernet LMI interaction with the OAM manager is unidirectional, running only from the OAM manager to E-LMI on the U-PE side of the switch. Information is exchanged either as a result of a request from E-LMI or triggered by the OAM manager when it receives notification of a change from the OAM protocol. Information that is relayed includes the EVC name and availability status, remote UNI name and status, and remote UNI counts.

To view Ethernet LMI properties:

-
- Step 1** In Prime Network Vision, double-click the device configured for Ethernet LMI.
 - Step 2** In the inventory window, choose **Logical Inventory > Ethernet LMI**.

[Figure 15-6](#) shows an example of Ethernet LMI properties in logical inventory.

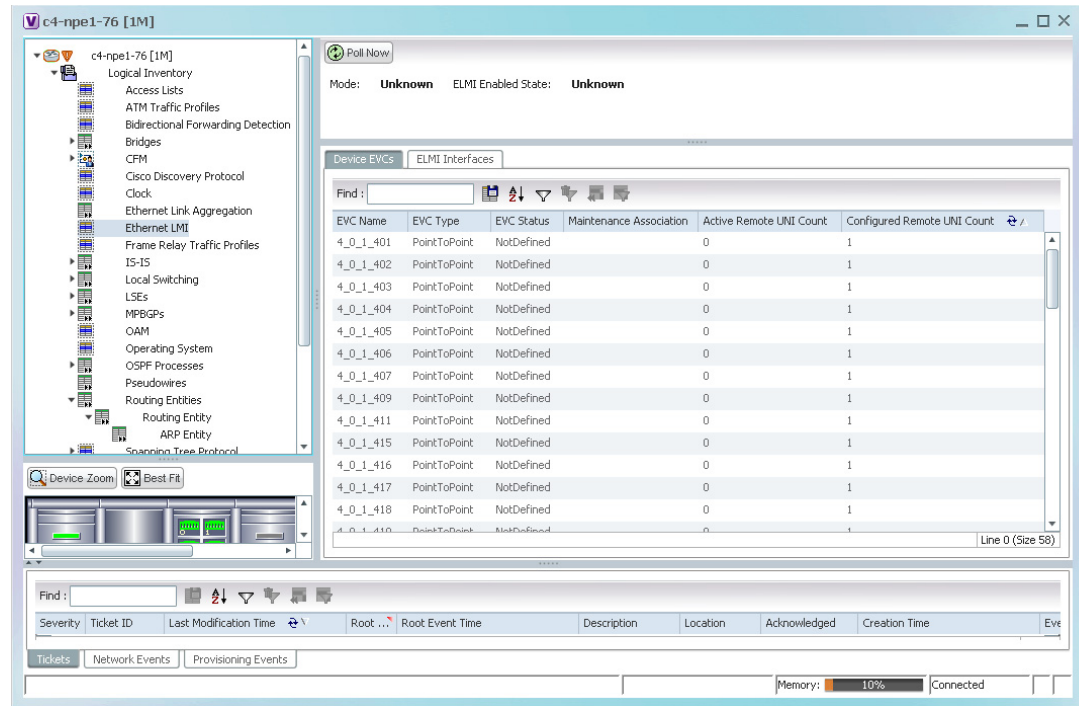
Figure 15-6 Ethernet LMI in Logical Inventory

Table 15-8 describes the information displayed for Ethernet LMI.

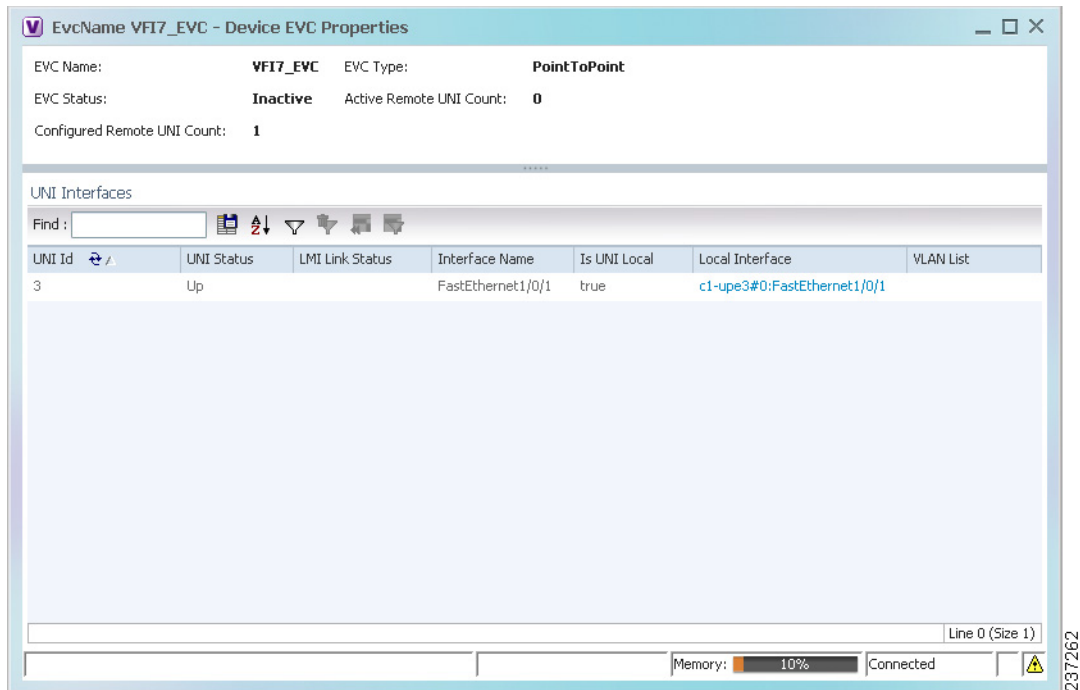
Table 15-8 Ethernet LMI Properties in Logical Inventory

Field	Description
Globally Enabled	Whether or not Ethernet LMI is enabled globally: True or False.
Mode	Ethernet LMI mode: CE or PE.
Device EVCs Tab	
EVC Name	Name of the EVC.
EVC Type	Type of EVC: Point-to-point or Multipoint.
EVC Status	EVC status: Active, Inactive, Not Defined, or Partially Active.
Maintenance Association	Hyperlinked entry to the maintenance association in CFM in logical inventory. For more information about maintenance associations, see Table 15-6 .
Active Remote UNI Count	Number of active remote UNIs.
Configured Remote UNI Count	Number of configured remote UNIs.

Table 15-8 Ethernet LMI Properties in Logical Inventory (continued)

Field	Description
ELMI Interfaces Tab	
Interface Name	Hyperlinked entry to the interface in physical inventory. For more information, see Step 4 in this procedure.
T391	Frequency at which the customer equipment sends status inquiries. The range is 5-30 seconds, with a default of 10 seconds.
T392	Frequency at which the metro Ethernet network verifies that status enquiries have been received. The range is 5-30 seconds, with a default of 15 seconds. A value of 0 (zero) indicates the timer is disabled.
N391	Frequency at which the customer equipment polls the status of the UNI and all EVCs. The range is 1-65000 seconds, with a default of 360 seconds.
N393	Error count for the metro Ethernet network. The range is 1-10, with a default of 4.

Step 3 To view device EVC properties, double-click an EVC name in the Device EVCs tab.
The Device EVC Properties window is displayed as shown in [Figure 15-7](#).

Figure 15-7 Device EVC Properties Window

[Table 15-9](#) describes the information displayed in the Device EVC Properties window.

Table 15-9 Device EVC Properties in Logical Inventory

Field	Description
EVC Name	Name of the EVC.
EVC Type	Type of EVC: Point-to-point or Multipoint.
EVC Status	EVC status: Active, Inactive, Not Defined, or Partially Active.
Maintenance Association	Hyperlinked entry to the maintenance association in CFM in logical inventory. For more information about maintenance associations, see Table 15-6 .
Active Remote UNI Count	Number of active remote UNIs.
Configured Remote UNI Count	Number of configured remote UNIs.
UNI Interfaces Table	
UNI Id	UNI identifier.
UNI Status	Status of the UNI: Up or Down.
LMI Link Status	Status of the LMI link: Up or Down.
Interface Name	Interface on which UNI is configured.
Is UNI Local	Whether or not UNI is local: True or False.
Local Interface	Hyperlinked entry to the interface in physical inventory.
VLAN List	Name of the VLAN associated with the UNI interface.

Step 4 To view properties for an Ethernet LMI interface in physical interface, click the required interface name in the ELMI Interfaces table.

[Table 15-10](#) describes the information displayed in the UNI Properties area in physical inventory.

Table 15-10 Ethernet LMI UNI Properties in Physical Inventory

Field	Description
Service Multiplexing Enabled	Whether or not the interface is configured for UNI multiplexing: True or False.
Bundling Enabled	Whether or not the interface is configured for UNI bundling: True or False.
UNI Id	UNI identifier.
Bundling Type	Type of bundling applied: All-to-One or None. This field appears only when a bundling type is set.

Viewing Link OAM Properties

Link OAM is an optional sublayer implemented in the OSI Data Link Layer between the Logical Link Control and MAC sublayers. Link (802.3AH) OAM (L-OAM) can be implemented on any full-duplex point-to-point or emulated point-to-point Ethernet link.

The frames (OAM Protocol Data Units [OAMPDUs]) cannot propagate beyond a single hop within an Ethernet network and have modest bandwidth requirements (frame transmission rate is limited to a maximum of 10 frames per second).

Link OAM processes include:

- **Discovery**—Discovery is the first Link OAM process. During discovery, Link OAM identifies the devices at each end of the link and learns their OAM capabilities.
- **Link monitoring**—Link OAM link monitoring includes:
 - Monitoring links and issuing notifications when error thresholds are exceeded or faults occur.
 - Collecting statistics on the number of frame errors (or percent of frames that have errors) and the number of coding symbol errors.
- **Remote MIB Variable Retrieval**—Provides 802.3ah MIB polling and response (but not writing).
- **Remote Failure indication**—Informs peers when a received path goes down. Because link connectivity faults caused by slowly deteriorating quality are difficult to detect, Link OAM communicates such failure conditions to its peer using OAMPDU flags. The failure conditions that can be communicated are a loss of signal in one direction on the link, an unrecoverable error (such as a power failure), or some other critical event.
- **Remote Loopback**—Puts the peer device in (near-end) intrusive loopback mode using the OAMPDU loopback control. Statistics can be collected during the link testing. In loopback mode, every frame received is transmitted back unchanged on the same port (except for OAMPDUs, which are needed to maintain the OAM session). Loopback mode helps ensure the quality of links during installation or troubleshooting. Loopback mode can be configured so that the service provider device can put the customer device into loopback mode, but the customer device cannot put the service provider device in loopback mode.

Prime Network Vision supports topology discovery based on Link OAM information and enables you to view Link OAM properties. You can also configure L-OAM using the commands described in [Configuring L-OAM, page 15-21](#).

For information on CFM and Ethernet LMI, see [Viewing Connectivity Fault Management Properties, page 15-3](#) and [Viewing Ethernet LMI Properties, page 15-10](#).

To view Link OAM properties:

-
- Step 1** In Prime Network Vision, double-click the device configured for Link OAM.
- Step 2** In the inventory window, choose **Logical Inventory > OAM**.

Figure 15-8 shows an example of Link OAM properties in logical inventory.

Figure 15-8 Link OAM Properties in Logical Inventory

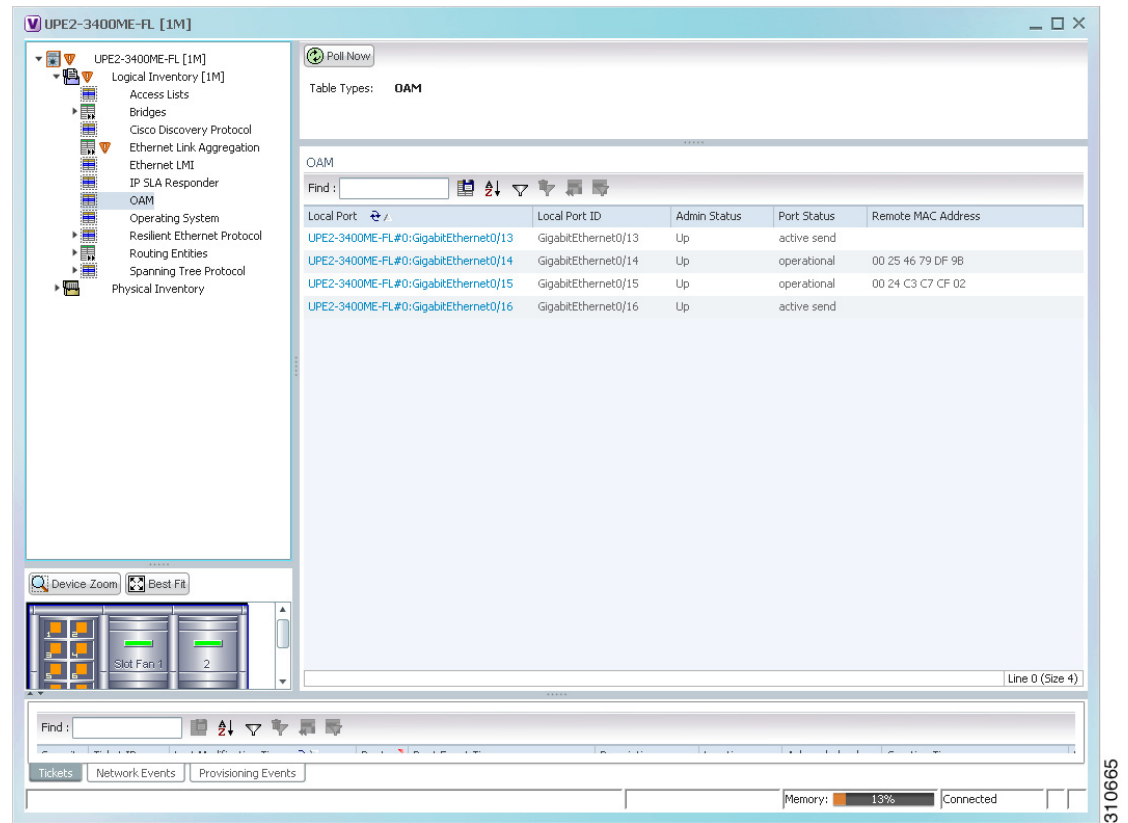


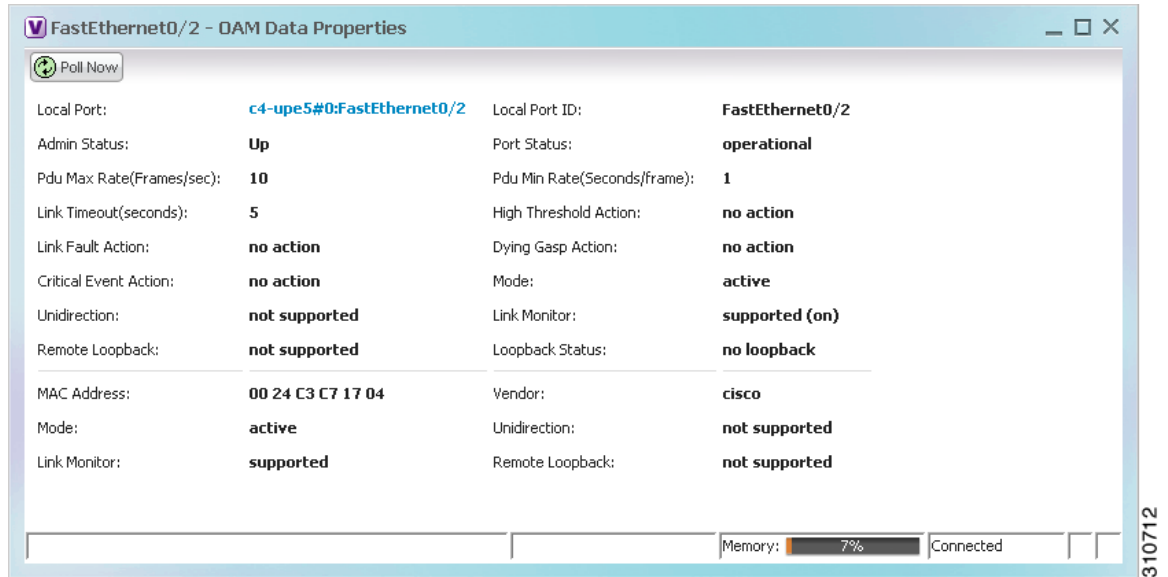
Table 15-11 describes the information displayed for Link OAM.

Table 15-11 Link OAM Properties in Logical Inventory

Field	Description
Table Types	Type of table. In this case, it is OAM.
OAM Table	
Local Port	Name of the OAM-supported interface, hyperlinked to the location in physical inventory.
Local Port ID	Local port identifier, such as FastEthernet1/0/9.
Admin Status	Administrative status of the interface.
Port Status	Status of the port.
Remote MAC Address	Remote client MAC address.

- Step 3** To view detailed information about an entry in the table, double-click the required entry. The Link OAM Data Properties window is displayed as shown in [Figure 15-9](#).

Figure 15-9 Link OAM Data Properties Window



[Table 15-12](#) describes the information that is displayed in the Link OAM Data Properties window.

Table 15-12 Link OAM Data Properties Window

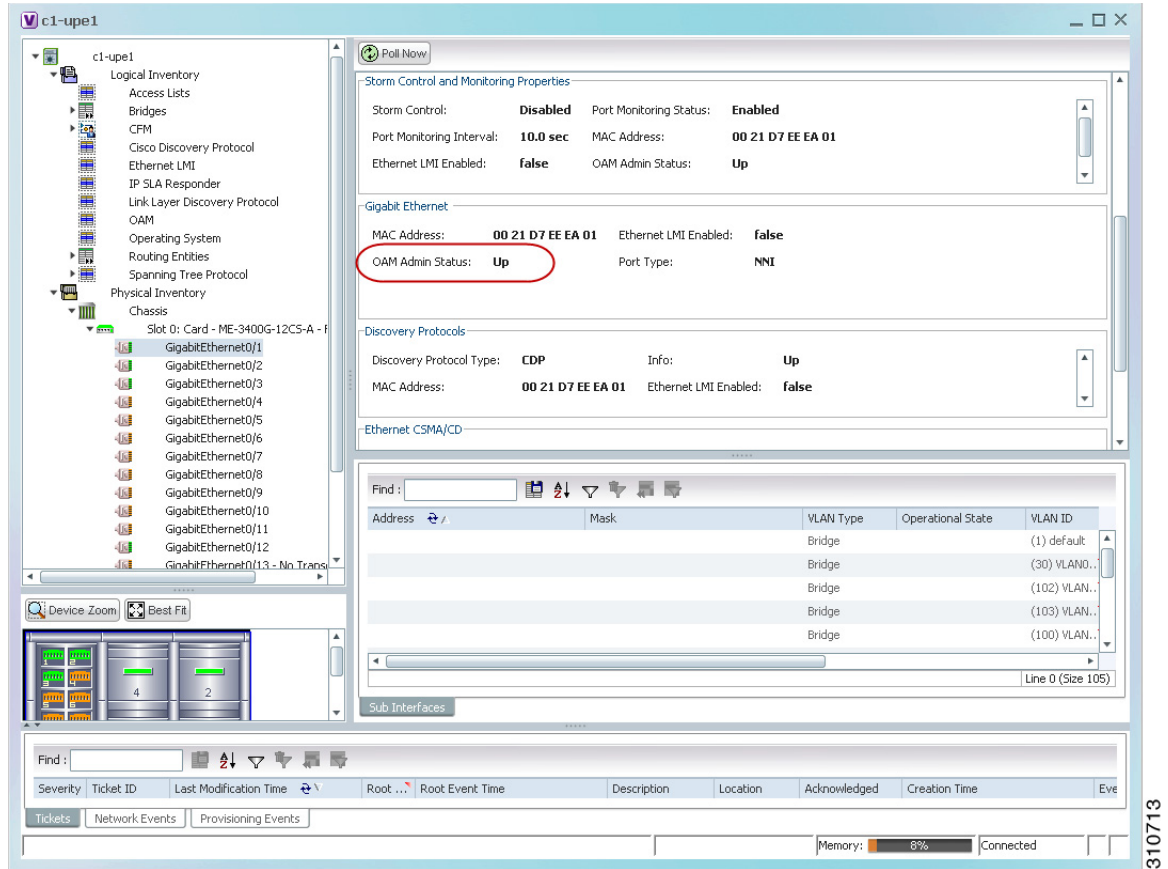
Field	Description
Local Interface	
Local Port	Name of the OAM-supported interface, hyperlinked to the location in physical inventory.
Local Port ID	Local port identifier.
Admin Status	Administrative status of the interface: Up or Down.
Port Status	Status of the port, such as Operational.
PDU Max Rate (Frames/sec)	Maximum transmission rate measured by the number of OAM PDUs per second; for example, 10 packets per second.
PDU Min Rate (Seconds/frame)	Minimum transmission rate measured by the number of seconds required for one OAM PDU; for example, 1 packet per 2 seconds.
Link Timeout	Number of seconds of inactivity on a link before the link is dropped.
High Threshold Action	Action that occurs when the high threshold for an error is exceeded.
Link Fault Action	Action that occurs when the signal is lost.

Table 15-12 Link OAM Data Properties Window (continued)

Field	Description
Dying Gasp Action	Action that occurs when an unrecoverable condition is encountered.
Critical Event Action	Action that occurs when an unspecified vendor-specific critical event occurs.
Mode	Mode of the interface: Active or Passive.
Unidirection	Status of unidirectional Ethernet on the local interface: Supported or Not supported.
Link Monitor	Status of link monitoring on the local interface: Supported or Not supported.
Remote Loopback	Status of remote loopback on the local interface: Supported or Not supported.
Loopback Status	Status of loopback on the local interface: Supported or No loopback.
Remote Client	
MAC Address	MAC address for the remote client.
Vendor	Vendor of the remote client.
Mode	Mode of the remote client: Active or Passive.
Unidirection	Status of unidirectional Ethernet on the remote client interface: Supported or Not supported.
Link Monitor	Status of link monitoring on the remote client interface: Supported or Not supported.
Remote Loopback	Status of loopback on the remote client interface: Supported or Not supported.

Step 4 To view Link OAM status in physical inventory, choose **Physical Inventory** > *chassis* > *slot* > *interface*. The Link OAM administrative status is displayed as shown in [Figure 15-10](#).

Figure 15-10 Link OAM Administrative Status in Physical Inventory



Configuring CFM

CFM provides capabilities for detecting, verifying, and isolating connectivity failures in networks with bridges operated by multiple independent organizations, each with restricted management access to each other's equipment.

The CFM commands can be launched from the inventory by right-clicking a CFM node and selecting **Commands**. Unless otherwise noted, all of the following commands are launched by right-clicking the device and choosing **Commands > Configure > Cisco**. You can navigate from the MEP logical inventory to the interface or port channel on which the MEP is configured.

To run these commands, the software on the network element must support the technology. Before executing any commands, you can preview them and view the results. If desired, you can also schedule the commands. For details on the software versions Prime Network supports for the listed supported network elements, see [Cisco Prime Network 4.0 Supported Cisco VNEs](#).

Additional commands may be available for your devices. New commands are often provided in Prime Network Device Packages, which can be downloaded from the Prime Network software download site. For more information on how to download and install DPs and enable new commands, see the information on “Adding Additional Device (VNE) support” in the [Cisco Prime Network 4.0 Administrator Guide](#).

**Note**

You might be prompted to enter your device access credentials while executing a command. Once you have entered them, these credentials will be used for every subsequent execution of a command in the same GUI client session. If you want to change the credentials, click **Edit Credentials**. The Edit Credentials button will not be available for SNMP commands or if the command is scheduled for a later time.

Command	Description
Maintenance Domain > Configure CFM Maintenance Domain	<p>A maintenance domain is a management space for the purpose of managing and administering a network. A single entity owns and operates a domain and is defined by the set of ports internal to it and at its boundary. Each maintenance domain can contain any number of maintenance associations. Each maintenance association identifies a service that can be uniquely identified within the maintenance domain. The CFM protocol runs within a particular maintenance association.</p> <p>Using this command, assign a unique maintenance level to each domain and a maintenance endpoint archived hold time. Maintenance level defines the hierarchical relationship among domains and MEP Archive Hold time acts as a demarcation point on an interface that participates in CFM.</p>
Global Parameters > Configure CFM Global Parameters	Enable CFM globally for a network element. Using this command you can configure the device to transmit traceroute and loopback messages with a hold-time value that indicates the validity of the messages.
Enable > Cisco > Continuity Check > Configure CFM Continuity Check Enable > Cisco > Continuity Check > Enable CFM Continuity Check	Enable continuity check parameters on the specified domain, service ¹ , bridge group, and bridge domain names.
MIP > Configure CFM MIP	<p>The Configure CFM MIP command configures an operator-level maintenance intermediate point (MIP) for the domain-level ID.</p> <p>If the port on which a MIP is configured is blocked by Spanning-Tree Protocol (STP), the MIP cannot receive CFM messages or relay them toward the relay function side. The MIP can, however, receive and respond to CFM messages from the wire.</p> <p>A MIP has only one level associated with it, and the command-line interface (CLI) does not allow you to configure a MIP for a domain that does not exist.</p> <p>Note This command is not supported on the Cisco Carrier Packet Transport (CPT) System.</p>
Service ID > Configure CFM Service ID	Use the Configure CFM Service ID command to configure the CFM service ID.

Command	Description
MEP > Configure CFM MEP	<p>Use this command to configure maintenance endpoints (MEPs), which have the following characteristics:</p> <ul style="list-style-type: none"> • Per-maintenance domain (level) and service (S-VLAN or EVC) • At the edge of a domain, define the boundary • Within the bounds of a maintenance domain, confine CFM messages • When configured to do so, proactively transmit CFM continuity check messages (CCMs) • At the request of an administrator, transmit traceroute and loopback messages <p>Note This command is not supported on the Cisco Carrier Packet Transport (CPT) System.</p>
Enable > Cisco > SNMP Server Traps > Enable CFM SNMP Server Traps	Enables Ethernet CFM continuity check traps and Ethernet CFM cross-check traps

1. Applicable for Cisco ASR 9000 series that run on Cisco IOS XR software.

Configuring E-LMI

E-LMI notifies the CE of connectivity status and configuration parameters of Ethernet services available on the CE port.

The following commands can be launched from the inventory by right-clicking an E-LMI node and selecting **Commands**. Before executing any commands, you can preview them and view the results. If desired, you can also schedule the commands. The table below lists the Ethernet LMI commands and the supported network elements.

Additional commands may be available for your devices. New commands are often provided in Prime Network Device Packages, which can be downloaded from the Prime Network software download site. For more information on how to download and install DPs and enable new commands, see the information on “Adding Additional Device (VNE) support” in the [Cisco Prime Network 4.0 Administrator Guide](#).

To run the these commands, the software on the network element must support the technology. Before executing any commands, you can preview them and view the results. If desired, you can also schedule the commands. For details on the software versions Prime Network supports for the listed supported network elements, see [Cisco Prime Network 4.0 Supported Cisco VNEs](#).



Note

You might be prompted to enter your device access credentials while executing a command. Once you have entered them, these credentials will be used for every subsequent execution of a command in the same GUI client session. If you want to change the credentials, click **Edit Credentials**. The Edit Credentials button will not be available for SNMP commands or if the command is scheduled for a later time.

Command	Description
Enable > Global E-LMI	Enable Ethernet LMI globally. Note Not supported on Cisco IOS XR.
Enable On Interface	If E-LMI is disabled globally, you can use this command to enable E-LMI on specific interfaces.
Configure MultiPoint To MultiPoint or Point To Point EVC	UNI count indicates the range of the Unified network interface(UNI) is 2 to 1024; the default is 2. If you enter a value of 2, you have the option to select point-to-multipoint service. If you configure a value of 3 or greater, the service is point-to-multipoint.
Configure UNI in an Interface	
Configure Service Instance Vlan Id on Interface	Specify the service interface ID (Per-interface Ethernet service instance identifier that does not map to a VLAN).

Configuring L-OAM

L-OAM commands monitors and troubleshoots a single Ethernet link. The following commands can be launched from the inventory by right-clicking a L-OAM node and selecting **Commands**. Before executing any commands, you can preview them and view the results. If desired, you can also schedule the commands. The table below lists the L-OAM commands.

To run the these commands, the software on the network element must support the technology. Before executing any commands, you can preview them and view the results. If desired, you can also schedule the commands. For details on the software versions Prime Network supports for the listed supported network elements, see [Cisco Prime Network 4.0 Supported Cisco VNEs](#).

Additional commands may be available for your devices. New commands are often provided in Prime Network Device Packages, which can be downloaded from the Prime Network software download site. For more information on how to download and install DPs and enable new commands, see the information on “Adding Additional Device (VNE) support” in the [Cisco Prime Network 4.0 Administrator Guide](#).



Note

You might be prompted to enter your device access credentials while executing a command. Once you have entered them, these credentials will be used for every subsequent execution of a command in the same GUI client session. If you want to change the credentials, click **Edit Credentials**. The Edit Credentials button will not be available for SNMP commands or if the command is scheduled for a later time.

Command	Description
Assign Template on Interface	Assign template name
Configure MultiPoint To MultiPoint or Point To Point EVC	Configure OAM (L-OAM) on any full-duplex point-to-point or emulated point-to-point Ethernet link.
Enable OAM on Interface	Enable or disable OAM on the specified interface.
Disable OAM on Interface	

Command	Description
Enable E-LMI On Interface	Interface name (if E-LMI is disabled globally, you can use this command to enable E-LMI on specific interfaces)
Configure OAM Parameter on Interface	Configure OAM parameters, like maximum and minimum transmission rate of OAM PDU , OAM client mode and remote loopback ability on an interface.
Start Remote Loopback Stop Remote Loopback	Specify the local interface name on which the remote loopback should be started and stopped.