



CHAPTER 47

Managing Service Requests

This chapter describes how to manage Prime Fulfillment service requests through the Service Request Manager window. It contains the following sections:

- [Accessing the Service Request Manager Window, page 47-1](#)
- [Viewing Service Request Details, page 47-3](#)
- [Viewing the Status of Service Requests, page 47-8](#)
- [Previewing Configlets, page 47-9](#)
- [Editing Service Requests, page 47-10](#)
- [Deploying Service Requests, page 47-11](#)
- [Decommissioning Service Requests, page 47-12](#)
- [Purging Service Requests, page 47-12](#)
- [Service Request States, page 47-13](#)

Accessing the Service Request Manager Window

To manage service requests, choose **Operate > Service Requests > Service Request Manager**.

[Figure 47-1](#) shows the Service Request Manager window.

Figure 47-1 Service Request Manager Window

Service Request Manager

Show Services with Job ID matching * of Type MPLS Find

Showing 1 - 10 of 27 records

| # | <input type="checkbox"/> | Job ID | State | Type | Operation Type | Creator | Customer Name | Policy Name | Last Modified | Description |
|----|--------------------------|--------|-----------|------|----------------|---------|---------------|-----------------------|------------------|-------------|
| 1 | <input type="checkbox"/> | 20 | DEPLOYED | MPLS | ADD | admin | | MplsPeCe | 2/16/11 12:51 PM | |
| 2 | <input type="checkbox"/> | 23 | DEPLOYED | MPLS | ADD | admin | | MplsPeNoCe | 2/16/11 12:49 PM | |
| 3 | <input type="checkbox"/> | 24 | DEPLOYED | MPLS | ADD | admin | | MplsMvrfCe | 2/16/11 12:53 PM | |
| 4 | <input type="checkbox"/> | 25 | DEPLOYED | MPLS | ADD | admin | | MplsMvrfNoCe | 2/16/11 12:53 PM | |
| 5 | <input type="checkbox"/> | 26 | DEPLOYED | MPLS | ADD | admin | | MplsMgmtPeCe | 2/16/11 12:52 PM | |
| 6 | <input type="checkbox"/> | 27 | DEPLOYED | MPLS | ADD | admin | | MplsCarrierPeCe | 2/16/11 12:53 PM | |
| 7 | <input type="checkbox"/> | 30 | REQUESTED | MPLS | ADD | admin | | Bundle_PE_NoCE_IP... | 2/16/11 12:53 PM | |
| 8 | <input type="checkbox"/> | 31 | REQUESTED | MPLS | ADD | admin | | Bundle_PE_CE_IP V4... | 2/16/11 12:53 PM | |
| 9 | <input type="checkbox"/> | 32 | REQUESTED | MPLS | ADD | admin | | MplsPeCe | 2/16/11 12:53 PM | |
| 10 | <input type="checkbox"/> | 33 | REQUESTED | MPLS | ADD | admin | | MplsPeNoCe | 2/16/11 12:53 PM | |

Rows per page: 10 Page 1 of 3

Auto Refresh: ☒ Create Details Status Configlet Preview Edit Deploy Decommission Purge

238001

The Service Request Manager window shows the current list of service requests for this username. The window provides the following information about each service request:

- **JobID**—The job number assigned to the service request by Prime Fulfillment.
- **Data Files**—Shows if a data file is associated with the service request. A paper clip icon appears in the Data Files column if a service request has one or more templates associated with it. For more information about how templates and data files are used with service requests, see [Chapter 49, “Using Templates and Data Files with Policies and Service Requests.”](#)
- **State**—The transition state for the service request. See [Service Request States, page 47-13](#) for more information.
- **Type**—The type of service request. For example, MPLS VPN, L2VPN, VPLS, VRF, TE, or FlexUNI(EVC).
- **Operation Type**—The operation type for the service request. For example, ADD means that you are adding this service request, MODIFY that a service request has been changed from an earlier state, and DELETE that you are decommissioning this service request.
- **Creator**—Username identity of person who created or last modified the service request.
- **Customer Name**—Customer name for the service request.
- **Policy Name**—Name of policy assigned to this service request.
- **Last Modified**—Date and time the service request was created or last modified.
- **Description**—Optional text description of the service request.

You can use the buttons at the bottom of the Service Request Manager window to perform the following operations for service requests:

- **Create**—Create a Prime Fulfillment service request. See other chapters in this guide for more information on creating services requests for particular services.
- **Details**—View the service request history report, audit the service request, and view configlets. For more details, see [Viewing Service Request Details, page 47-3](#).
- **Status**—View links and access any available logs for a selected service request. For more details, see [Viewing the Status of Service Requests, page 47-8](#).

- **Configlet Preview**—Preview configlets that will be sent to a device for a specific service request. For more details, see [Previewing Configlets, page 47-9](#).
- **Edit**—Edit a service request. For more details, see [Editing Service Requests, page 47-10](#).
- **Deploy**—Deploy a service request. For more details, see [Deploying Service Requests, page 47-11](#).
- **Decommission**—Decommission a service request. For more details, see [Decommissioning Service Requests, page 47-12](#).
- **Purge**—Purge a service request. For more details, see [Purging Service Requests, page 47-12](#).

Viewing Service Request Details

The service request details include the link endpoints for the service request, the history, and the configlet generated during the service request deployment operation. Use the service request details to troubleshoot a problem or error with the service request or to check the commands in the configlet.

This section describes how to view the details of a service request, including the history, link details, and configlets.

To view service request detail, perform the following steps.

Step 1 Choose **Operate > Service Requests > Service Request Manager**.

Step 2 Select the service request and click **Details**.

The Service Request Details window appears.

From the Service Request Details page, you can view more information about:

- **Details > Links**—Service request links report.
 - **Details > History**—Service request history report.
 - **Details > Audit**—Not supported by Prime Fulfillment.
 - **Details > Configlets**—View the Prime Fulfillment generated configlet for the service request.
-

The following sections describe the links, history, audit, and configlet details for a service request.

Viewing Service Request Link Details

The service request link details include the link endpoints, PE secured interface, VLAN ID, and whether a CE is present.

To see this information, perform the following steps.

Step 1 Click **Links** on the Service Request Details window.

The Service Request Link window appears.

Step 2 Choose a link and click **Details**.

The Service Request Link Details window appears.

Step 3 Click **OK** to return to the Service Request Link window.

- Step 4** Choose another link to view, or click **OK** to return to the Service Request Details window.
-

Viewing Service Request History Information

To view history information about the service request, perform the following steps.

- Step 1** Click **History** on the Service Request Details window.

The Service Request State Change Report window appears.

The history report shows the following information about the service request:

- **Element name**—The device, interface, and subinterfaces participating in this service request.
- **State**—The transition states the element has gone through.
- **Create Time**—The time the element was created for this service request.
- **Report**—The action taken by Prime Fulfillment for the element in this service request.

- Step 2** Click **OK** to return to the Service Request Details window.
-

Viewing Audit Reports Service Requests

This section describes how to view configuration and functional audit reports for Prime Fulfillment service requests.

Viewing Configuration Audit Reports

A configuration audit verifies if all the commands for a service (service intent) are present on the network elements that participate in the service. Each time a service request is deployed in Prime Fulfillment, a configuration audit occurs. When a configuration audit occurs, Prime Fulfillment verifies that all Cisco IOS commands are present and that they have the correct syntax. An audit also verifies that there were no errors during deployment. If the device configuration does not match what is defined in the service request, the audit flags a warning and sets the service request to a Failed Audit or Lost state.

A configuration audit can fail if some of the commands are removed after provisioning from the network elements. This could happen if the commands are manually removed or they are removed as part of provisioning some other service. Another reason a configuration audit can fail is if Prime Fulfillment does not recognize commands in the configuration file. The default behavior in Prime Fulfillment is to skip unrecognized commands in the configuration file during the configuration audit. Such unrecognized commands might have been present in an existing configuration or manually inserted in the configuration file. If an unrecognized command is at the start of a block of commands, Prime Fulfillment will skip the initial command and continue to parse the subcommands in the block. This might lead Prime Fulfillment to assume there is an error in the logic flow within the configuration file and cause the audit to fail.

Configuration audits can be performed manually through the Prime Fulfillment Task Manager. For information on how to create a task to manually schedule a configuration audit, see [Chapter 52, “Task Manager.”](#)

To display the Configuration Audit report for a service request, perform the following steps.

-
- Step 1** Choose **Operate > Service Requests > Service Request Manager**.
The Service Request Manager window appears.
- Step 2** Choose a service request for the configuration audit.
- Step 3** Click **Details**.
The Service Request Details window appears.
- Step 4** Click the **Audit** button and choose **Config** from the drop-down list.
The Service Request Audit Report window appears.
This window lists the device name and role, and a message regarding the status of your configuration audit. If the audit is unsuccessful, the message field lists details on the failed audit. The audit failure message indicates missing commands and configuration issues. Carefully review the information in the message field. If the audit fails, you must correct all errors and redeploy the service request.
- Step 5** Click **OK** to return to the Service Request Details window.
-

Viewing a Functional Audit Report

A functional audit verifies that the links in a service request or VPN are working correctly. The audit checks the routes to remote CEs in the VRF route tables on the PE devices. Prime Fulfillment automatically provides a functional audit whenever a service request is deployed or force-redeployed. A functional audit could fail if BGP peering is incorrect, MPLS setup in the core is faulty, or remote links are down.

Functional audits can be performed manually through the Prime Fulfillment Task Manager. For information on how to create a task to manually schedule a functional audit, see [Chapter 52, “Task Manager.”](#)

To display the functional audit report for a service request, perform the following steps.

-
- Step 1** Choose **Operate > Service Requests > Service Request Manager**.
The Service Request Manager window appears.
- Step 2** Choose a service request for the functional audit.
- Step 3** Click **Details**.
The Service Request Details window appears.
- Step 4** Click the **Audit** button and choose **Functional** from the drop-down list.
The Service Request Audit Report window appears.
This window lists the device name and role, and a message regarding the status of your configuration audit. If the audit is unsuccessful, the message field lists details on the failed audit. The audit failure message indicates missing commands and configuration issues. Carefully review the information in the message field. If the audit fails, you must correct all errors and redeploy the service request.
- Step 5** Click **OK** to return to the Service Request Details window.
-

Viewing Service Request Configlets

After you deploy the service request, Prime Fulfillment generates Cisco IOS or IOS XR commands to turn on appropriate services on all the network devices that participate in the service request.



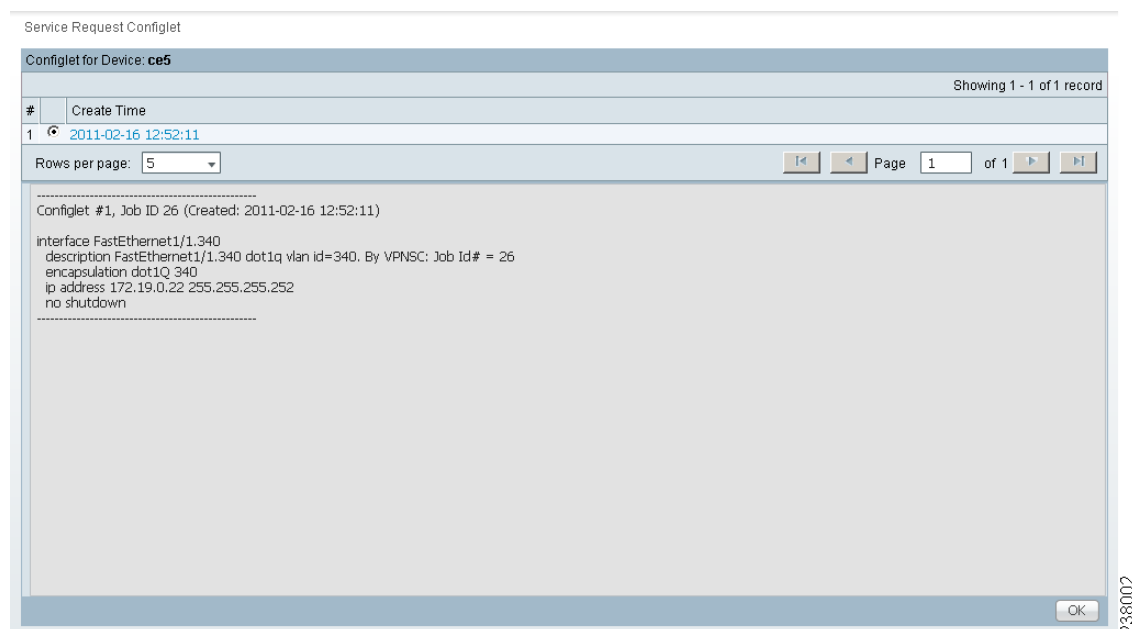
Note

For IOS devices, the configlets will appear as CLI commands. For IOS XR devices, the configlets can be viewed in XML or CLI format. For information about viewing configlets for IOS XR devices, see [Viewing Configlets on IOS XR Devices, page 47-7](#).

To view the configlets that are generated, perform the following steps.

- Step 1** Choose **Operate > Service Requests > Service Request Manager** to view the available service requests.
- Step 2** Check the appropriate check box to select the service request for which you want to view the associated configlets.
- Step 3** Click the **Details** button.
The Service Request Details window appears.
- Step 4** Click the **Configlets** button.
The Service Request Configlets window appears. This window displays a list of devices for which configlets have been generated.
- Step 5** To view configlets that were generated for a device, select a device and click the **View Configlet** button.
The Service Request Configlet window updates showing the configlet, as shown in [Figure 47-2](#). By default, the latest generated configlet is displayed.

Figure 47-2 Service Request Configlet Window



- Step 6** If applicable, you can display configlets for a device based on the time of creation. Choose the desired time of creation in the Create Time list to display a specific configlet based on the time the configlet was generated for the service request.
- Step 7** Click **OK** when you are finished viewing the configlet.
-

Viewing Configlets on IOS XR Devices

By default, service requests for IOS XR devices log the configuration sent to the device in XML format. Therefore, when configlets are viewed for IOS XR devices, they are displayed in raw XML format. Prime Fulfillment also allows the configlet to be viewed in CLI format. This feature is enabled by setting the DCPL property **DCS/getCommitCLIConfigAfterDownload** to true (the default setting).



Note

The DCPL property **DCS/getCommitCLIConfigAfterDownload** must be set to true to display the configlet(s) in CLI format. On setting the DCPL property to true, CLI configlets will only be available for subsequent service request deployments. They will not be available for configlets that were deployed before the DCPL property was set to true.

To view the configlets for IOS XR devices in XML or CLI formats, or both, perform the following steps.

- Step 1** Choose **Operate > Service Requests > Service Request Manager** to view the available service requests.
- Step 2** Check the appropriate check box to select the service request for which you want to view the associated configlets.
- Step 3** Click the **Details** button.
The Service Request Details window appears.
- Step 4** Click the **Configlets** button.
The Service Request Configlets window appears. This window displays a list of devices for which configlets have been generated.
- Step 5** To view configlets that were generated for an IOS XR device, select an IOS XR device and click the **View Configlet** button.
The Service Request Configlet window appears showing the configlet in CLI format. By default, the latest generated configlet is displayed.
- Step 6** If applicable, you can display configlets for a device based on the time of creation. Choose the desired time of creation in the Create Time list to display a specific configlet based on the time the configlet was generated for the service request.
- Step 7** To view the configlet in XML format, click the **XML Configlet** radio button.
The window refreshes and displays the configlet in XML format.
- Step 8** To toggle among different formats, use the following radio buttons:
- **XML Configlet**—Displays the configlet in XML format.
 - **CLI Configlet**—Displays the configlet in CLI format. This the default selection.
 - **Both**—Displays the configlet side by side in both XML and CLI formats.

- Step 9** Click **OK** when you are finished viewing the configlet.
-

Editing Configuration Files

To view or edit an existing router configuration file, perform the following steps.



Note

Exercise caution when editing a configuration file, particularly if you then choose to make the edited file the running configuration file.

- Step 1** Click the **Inventory > Physical Inventory > Devices**.
The Devices Inventory window appears.
- Step 2** Check the check box next to the device name to choose the configuration file versions you want to view.
- Step 3** Click **Config**.
The Device Configurations window appears.
The Device Configurations window displays the list of the current versions of the configuration files for the selected device. The configurations are listed by date and time. The configuration file listed first is the latest version.
- Step 4** Choose the version of the configuration file you want to view, then click **Edit**.
The contents of the selected configuration file are displayed.
You can view or edit the displayed device configuration file.
- Step 5** If necessary, edit the configuration file.
- Step 6** When finished editing the file, click **Save**.
-

Viewing the Status of Service Requests

From the Service Request Manager window, you can obtain status information on a service request as detailed in the following sections.

Viewing Links

To view information about links associated with a service request, perform the following steps.

- Step 1** Choose **Operate > Service Requests > Service Request Manager** to view the available service requests.
- Step 2** Check the appropriate check box to select the service request for which you want to view the associated links.
- Step 3** Click the **Status** button and choose **Links**.
The SR Link window appears.

This window displays a list of links associated with this service request.

- Step 4** When you are finished reviewing the information, click the **Return to SRs** button.
-

Viewing Logs

To view logs associated with a service request, perform the following steps.

- Step 1** Choose **Operate > Service Requests > Service Request Manager** to view the available service requests.
- Step 2** Check the appropriate check box to select the service request for which you want to view the associated links.
- Step 3** Click the **Status** button and choose **Logs**.
The Task Logs window appears.
This window displays the task by **Runtime Task Name**, and the **Action**, **Start Time**, **End Time**, and the **Status** of the task. You can use this window to view or delete the logs.
- Step 4** To view the log, check the check box for the row that represents the task and click the **View Log** button.
The Task Log page appears.
It is possible to set the types of log level you want to view. Specify the Log Level and click **Filter** button to view that information you want to view.
- Step 5** Click **Return to Logs** to specify another log to view.
- Step 6** When you are finished reviewing the log information, click the **Close** button.
-

Previewing Configlets

The preview configlet operation allows you to preview the configlet(s) that will be sent to a device (or devices) for a selected service request before the device is actually provisioned. This allows you to check that the service request is generating the expected configlet(s), including any templates that may be applied.

Note the following caveats:

- The preview configlet preview feature is available to service requests in all states except In Progress and Closed.
- The preview configlet feature is not supported for TEM service requests.

To preview configlets for a service request, perform the following steps.

- Step 1** Choose **Service Inventory > Inventory and Connection Manager > Service Requests**.
- Step 2** In the Service Request Manager window, select a service request and click **Preview Configlets**.

Step 3 Choose one of the following from the drop-down list:

- **For Deploy**—Generates the configlet(s) that would be generated by a Deploy operation.
- **For Force Deploy**—Generates the configlet(s) that would be generated by a Force Deploy operation.

These choices mimic the two different deployment options available, as the type of deployment may affect the configlet generated.

The Configlet Preview window appears. This window contains the generated configlets for each device in the service request.



Note This operation may take some time, as the configlet(s) must be uploaded from the device.

Step 4 After you review the configlets, click **OK** to return to the Service Request Manager window.

This feature is also available through the Deploy Service Request window, when a task is created to deploy the selected service request(s). Navigate to the Deploy Service Request window by choosing one or more service requests in the Service Request Manager window. Then choose **Deploy > Deploy** or **Deploy > Force Deploy**. The Deploy Service Request window that appears contains a table representing the selected service requests. Click on the Configlet Preview link in this table to show preview configlets.

Editing Service Requests

To edit a service request, perform the following steps.

Step 1 Choose **Service Inventory > Inventory and Connection Manager > Service Requests**.

Step 2 Select the service request you want to modify and click **Edit**.

The Service Request Editor window appears.



Note The exact name and contents of this window will vary based on the type of service request being edited.

Step 3 Make the desired changes in the editor and click **Save**.

The Service Requests window reappears with the corresponding state of the service request set to In Progress and the Operation Type changed to Modify.

In order for the changes to be provisioned on the network, you must deploy the service request. For information about how to deploy a service request, see [Deploying Service Requests, page 47-11](#). After deployment, look for the service request state to go to Deployed to indicate a successful deployment.

Deploying Service Requests

To apply policies to network devices, you must deploy the service request. When you deploy a service request, Prime Fulfillment compares the device information in the Repository (the Prime Fulfillment database) with the current device configuration and generates a configlet.

To apply device changes to network devices, you must deploy the service request. When you deploy a service request, Prime Fulfillment compares the device information in the Repository (the Prime Fulfillment database) with the current device configuration and generates a configlet.

Service Deployment

To deploy the service requests immediately or schedule their deployment, perform the following steps.

-
- Step 1** Choose **Operate > Service Requests > Service Request Manager**.
- The Service Requests Manager window appears.
- Step 2** Check the check box next to the Job ID for the service request you want to deploy.
- Step 3** Click the **Deploy** drop-down list.
- You have two deployment options:
- Deploy: Use **Deploy** when the service request state is Requested or Invalid.
 - Force Deploy: Use **Force Deploy** when the service request state is Deployed or Failed Audit.
- Step 4** Choose **Deploy**.
- The Deploy Service Request dialog box appears, which allows you to schedule when you want to deploy the selected service request.
- Step 5** Complete the fields in this dialog box to schedule the service requested as needed.
- Step 6** When satisfied with the schedule settings, click **Save**.
- You return to the Service Request Manager window.
- Check the Status display in the lower left corner of the window. If the service request has been deployed successfully, the Status display appears and shows a check in the Succeeded check box.
- Step 7** To update the State from Requested to Deployed, check the **Auto Refresh** check box.

**Note**

You can view logs to check on the task status and whether or not it completed successfully. For information on viewing logs, see [Viewing Logs, page 47-9](#).

Monitoring Service Requests

To monitor a service request that is being deployed, you must use the task logs to help you troubleshoot why a service request has failed or to find more details about a service request.

To monitor a service request, perform the following steps.

-
- Step 1** Choose **Operate > Tasks > Task Manager**.
The Task Logs window appears.
- Step 2** Click **Find** to refresh the window.
The task that is executing will be the first in the list of tasks that are being performed in Prime Fulfillment.
- Step 3** Choose the task you want to monitor and click **Logs**.
- Step 4** Choose the run-time task that you want to monitor and click **View Log**.
- Step 5** Choose the log level from the **Log Level** drop-down list and click **Filter**.
The log levels are All, Severe, Warning, Info, Config, Fine, Finer, and Finest.
- Step 6** Click **Return to Logs**.
- Step 7** Click **Close** in the Task Logs window.
-

Decommissioning Service Requests

To decommission a service request, perform the following steps.

-
- Step 1** Choose **Service Inventory > Inventory and Connection Manager > Service Requests**.
- Step 2** In the Service Request Manager window, select the service request you want to decommission and click **Decommission**.
The Confirm Decommission Service Request(s) window appears.
- Step 3** Click **OK** to confirm the decommissioning of the service request.
The Service Request Manager window reappears with the corresponding Operation Type changed to Delete.
- Step 4** Deploy the service request by selecting it and clicking **Deploy > Deploy**.
This is necessary for the changes to be provisioned to the network.
- Step 5** In the Deploy Service Request window, select the time at which the deployment should take place (default is immediately), and click **Save**.
- Step 6** After deployment, look for the service request state to go to Closed to indicate that the service request has been decommissioned successfully.
-

Purging Service Requests

The Purge operation is designed to remove a service request from the repository without affecting the network.

To purge a service request, perform the following steps.

-
- Step 1** Choose **Service Inventory > Inventory and Connection Manager > Service Requests**.

Step 2 In the Service Request Manager window, select the service request you want to decommission and click **Purge**.

From the drop-down list choose one of the following:

- **Purge**—The regular purge can only be used on the service request in Closed state.



Note The regular purge cannot be used on TE Resource, TE Tunnel, or TE Protection service requests because these cannot be decommissioned. These three types of service requests can only be force purged.

- **Force Purge**—During force purge, the repository checks the necessary dependency on the service request before it can be purged, so if a service request cannot be purged, there will be an error message.

The Confirm Purge Service Request(s) window appears.

Step 3 Click **OK** to confirm the purge or force purge operation.

Service Request States

A service request transition state describes the different stages a service request enters during the provisioning process. For example, when you deploy a service request, Prime Fulfillment compares the device information in the Repository (the Prime Fulfillment database) with the current device configuration and generates a configlet. When the configlet is generated and downloaded to the device, the service request enters the Pending state. When the device is audited, the service request enters the Deployed state.

Prime Fulfillment service requests are processed in parallel, except when multiple service requests attempt to configure the same device. In this case, the service requests are processed sequentially (that is, only one write to the device can happen at a time).

Figure 47-3, “[Service Requests States Transition Diagram](#),” shows a high-level diagram of the relationships and movement among Prime Fulfillment service request states.

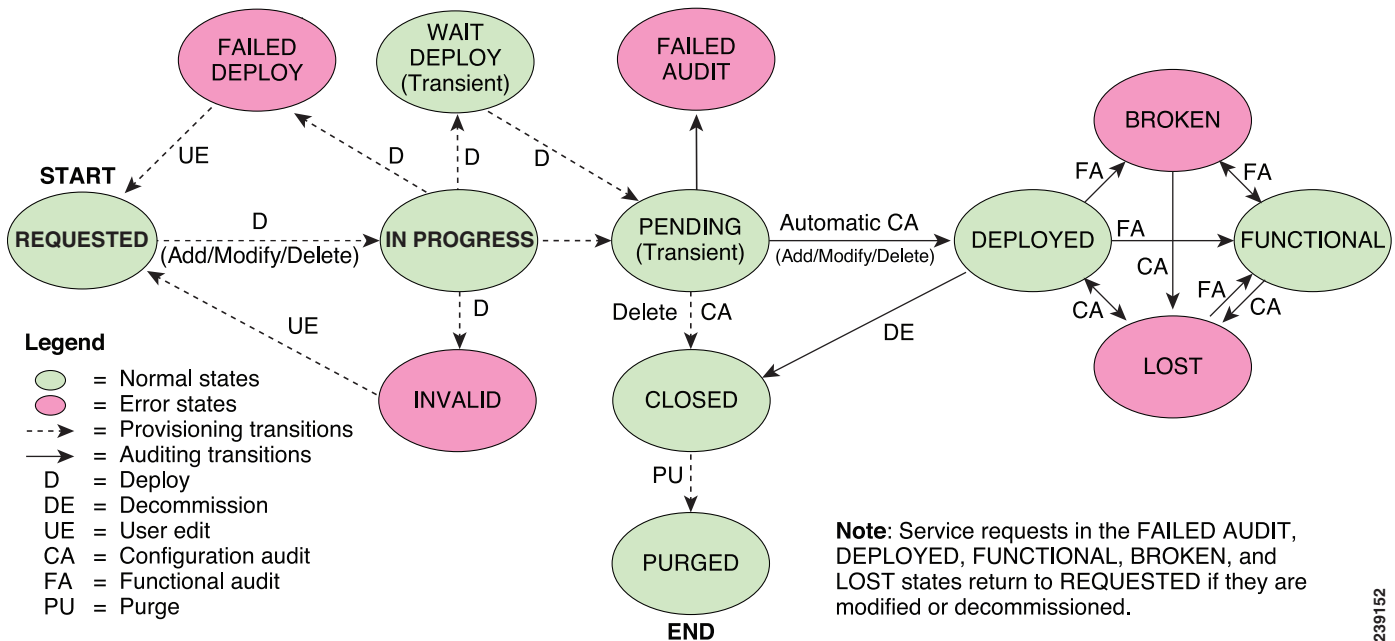
Figure 47-3 Service Requests States Transition Diagram

Table 47-1, “Summary of Prime Fulfillment Service Request States,” describes the functions of each Prime Fulfillment service request state. They are listed in alphabetical order.

Table 47-1 Summary of Prime Fulfillment Service Request States

| Service Request Type | Description |
|---|--|
| Broken (valid only for MPLS services) | The router is correctly configured but the service is unavailable (due to a broken cable or Layer 2 problem, for example). An MPLS service request moves to Broken if the auditor finds the routing and forwarding tables for this service, but they do not match the service intent. |
| Closed | A service request moves to Closed if the service request should no longer be used during the provisioning or auditing process. A service request moves to the Closed state only upon successful audit of a decommission service request. Prime Fulfillment does not remove a service request from the database to allow for extended auditing. Only a specific administrator purge action results in service requests being removed. |
| Deployed | A service request moves to Deployed if the intention of the service request is found in the router configuration file. Deployed indicates that the configuration file has been downloaded to the router, and the intent of the request has been verified at the configuration level. That is, Prime Fulfillment downloaded the configlets to the routers and the service request passed the audit process. |

Table 47-1 Summary of Prime Fulfillment Service Request States (continued)

| Service Request Type | Description |
|---|--|
| Failed Audit | This state indicates that Prime Fulfillment downloaded the configlet to the router successfully, but the service request did not pass the audit. Therefore, the service did not move to the Deployed state. The Failed Audit state is initiated from the Pending state. After a service request is deployed successfully, it cannot re-enter the Failed Audit state (except if the service request is redeployed). |
| Failed Deploy | The cause for a Failed Deploy status is that DCS reports that either the upload of the initial configuration file from the routers failed or the download of the configuration update to the routers failed (due to lost connection, faulty password, and so on). |
| Functional (valid only for MPLS services) | An MPLS service request moves to Functional when the auditor finds the VPN routing and forwarding tables (VRF) for this service and they match with the service intent. This state requires that both the configuration file audit and the routing audit are successful. |
| Invalid | Invalid indicates that the service request information is incorrect in some way. A service request moves to Invalid if the request was either internally inconsistent or not consistent with the rest of the existing network/router configurations (for example, no more interfaces were available on the router). The Provisioning Driver cannot generate configuration updates to service this request. |
| Lost | A service request moves to Lost when the Auditor cannot find a configuration-level verification of intent in the router configuration files. The service request was in the Deployed state, but now some or all router configuration information is missing. A service request can move to the Lost state only when the service request had been Deployed. |
| Pending | <p>A service request moves to Pending when the Provisioning Driver determines that the request looks consistent and was able to generate the required configuration updates for this request. Pending indicates that the service request has generated the configuration updates and the configuration updates are successfully downloaded to the routers.</p> <p>The Auditor regards pending service requests as new requests and begins the audit. If the service has been freshly provisioned and not yet audited, it is not an error (pending audit). However, if an audit is performed and the service is still pending, it is in an error state.</p> |
| Requested | If the service is newly entered and not yet deployed, it is not an error. However, if a Deploy is done and it remains Requested, the service is in an error state. |

Table 47-1 Summary of Prime Fulfillment Service Request States (continued)

| Service Request Type | Description |
|----------------------|---|
| In Progress | Whenever a service request is requested for deployment, irrespective of its current state, it displays the In Progress state. The In Progress state is an intermediate state between Requested and Deployed. Whenever multiple service requests are concurrently requested for deployment, they all display the state of In Progress. |
| Wait Deploy | This service request state pertains only when downloading configlets using Cisco Configuration Engine. Wait Deploy indicates that the configlet has been generated, but it has not been downloaded because the device is not currently online. The configlet is staged in the repository until such time as the Cisco Configuration Engine notifies Prime Fulfillment that the device is up. Configlets in the Wait Deploy state are then downloaded to the device. |

Table 47-2, “[User Operations on Prime Fulfillment Service Requests](#),” describes user operations and their impact on Prime Fulfillment service requests.

Table 47-2 User Operations on Prime Fulfillment Service Requests

| User Operations | Description |
|---------------------|---|
| Decommission | This user operation removes the service from all devices in the service request. |
| Force Deploy | This user operation allows you to Deploy a service request from any state except Closed. This is equivalent to restarting the state diagram. The service request can move from its current state to any other possible state. However, it does not move to the Requested state. |
| Force Purge | This user operation removes a service request from the database irrespective of its state. If you Force Purge a service request from the Prime Fulfillment repository before first decommissioning the service request, the service remains running on the network (specifically, the configuration remains on the devices on which the service was provisioned), but all record of the service request that created the service is removed from Prime Fulfillment. |
| Purged | When a service request is Purged, it is removed from the Prime Fulfillment database. |