



CHAPTER 9

Managing Events

You can use the Cisco Mobile Wireless Transport Manager (MWTM) to view information about all discovered events, including their associated network objects and other information.

This chapter includes:

- [Viewing Basic Information for All Events, page 9-2](#)
- [Viewing Events for a Specific Object, page 9-8](#)
- [Setting an Event Filter, page 9-8](#)
- [Loading an Existing Event Filter, page 9-16](#)
- [Saving an Event Filter File, page 9-17](#)
- [Viewing Event Properties, page 9-18](#)
- [Attaching a Note to an Event, page 9-21](#)
- [Setting an Event Filter, page 9-8](#)
- [Viewing Archived Event Files on the Web, page 9-22](#)
- [Viewing the Event Metrics Report on the Web, page 9-23](#)
- [Changing the Way the MWTM Processes Events, page 9-27](#)
- [Forwarding Events as Traps to Other Hosts, page 9-40](#)
- [Setting Sounds for Events at an MWTM Client, page 9-41](#)
- [Displaying Alarms, page 9-46](#)

Viewing Basic Information for All Events

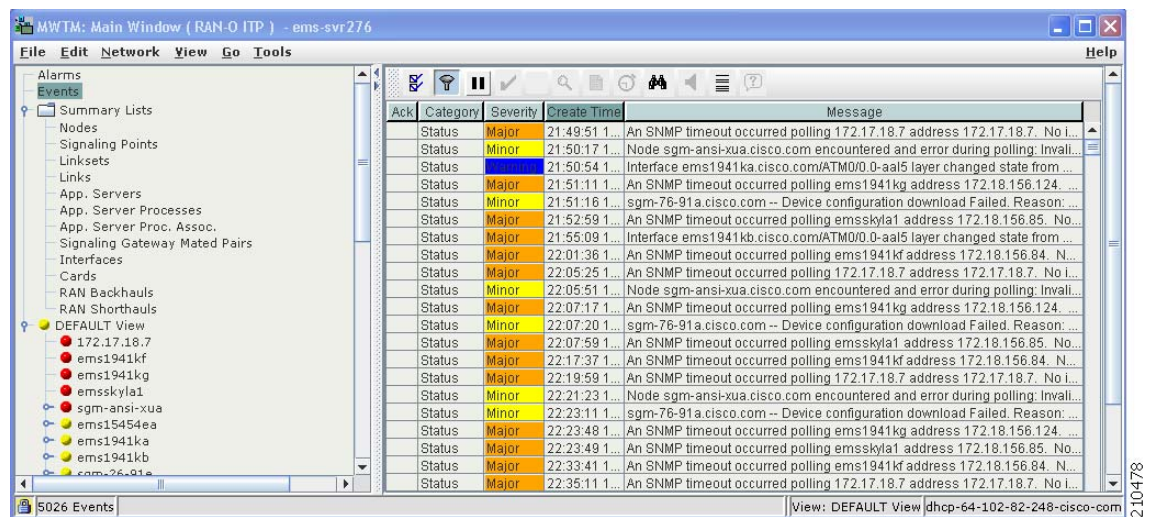
To view basic information for all events, click **Events** in the navigation tree of the MWTM in either the client interface or the web interface. The Event window appears.



Note

The client interface provides right-click menu options, toolbar buttons, and user-customized column display of event data. The web interface provides some slightly different toolbar buttons and columns. Differences are noted in this section.

Figure 9-1 Event Window of the Client Interface



The Event window shows information about the events that the MWTM event logger and event processor deliver for all objects in the current network view.



Note

You can view multiple Event windows at the same time, with different event filtering in each window or dialog box.

The Event window is composed of these sections:

- [Event Toolbar Buttons, page 9-3](#)
- [Right-Click Menu for All Events, page 9-4](#)
- [Right-Click Menu for a Specific Event, page 9-4](#)
- [Event Table, page 9-5](#)

Event Toolbar Buttons

The Event window within the client and the Web may provide these toolbar buttons:

Button	Description
Set Filter	Opens the Event Filter dialog box.
Apply Filter or Remove Filter	<p>Activates and deactivates the event filter specified in the Event Filter dialog box. If:</p> <ul style="list-style-type: none"> The filter is activated, the MWTM shows only those events that pass the filter. The filter is deactivated, the MWTM shows all events. You activate a filter in an object's Recent Events table in the MWTM main window, the filter is activated in all Recent Events tables in the MWTM main window for all other objects. The filter is not activated in Recent Events tables in Show In New Window windows or Real-Time Data and Charts windows.
Archived (Web interface only)	By default, the Recent Events table appears on the Web. Clicking on Archived shows the Archived Events table. Click the Archived button again to switch back and forth.
Pause or Resume (Client interface only)	<p>Pauses or resumes the table.</p> <p>While the table is paused, the MWTM does not display new events in the table (unless you apply an event filter or edit your event preferences). When the table is resumed, all new events since the table was paused are added to the display.</p> <p>If events are deleted while the table is paused, they are not removed from the table. Instead, they are grayed-out and cannot be acknowledged or edited. Deleted events are removed from the table when you resume the table.</p>
Acknowledge (Client interface only)	Makes the selected event or events acknowledged.
Unacknowledge (Client interface only)	Makes the selected event or events unacknowledged.
Event Properties (Client interface only)	Opens the Event Properties window.
Edit Notes (Client interface only)	Opens the Edit Event dialog box.
Time Difference (Client interface only)	Shows the time difference in days, minutes, hours, and seconds between two events.
Find (Client interface only)	Finds specific text in the event table.
Create Sound Filter (Client interface only)	Opens the Event Sound Filters dialog box and the Event Sound Filters List dialog box, with fields populated based on the selected event.

Button	Description
Adjust Row Height (Client interface only)	<p>Adjusts the table row height and wraps the message text. Click:</p> <ul style="list-style-type: none"> Once to double the row height and wrap the message text. Again to triple the row height and wrap the message text. Again for single row height and no message text wrapping. This is the default setting. <p>This setting is saved automatically with your preferences.</p>
Help for Event	Shows context-sensitive help for the selected event in a separate browser window.

Right-Click Menu for All Events



Note

This feature is available only in the MWTM client interface.

To see the right-click menu for all events, select **Events** in the navigation tree left pane and click the right mouse button. The events right-click menu provides these options:

Menu Command	Description
Show In New Window	Opens the Event window in a new window.
Back > <i>List of Windows</i>	<p>Navigates back to a window viewed in this session.</p> <p>The MWTM maintains a list of up to 10 Back windows.</p>
Forward > <i>List of Windows</i>	<p>Navigates forward to a window viewed in this session.</p> <p>The MWTM maintains a list of up to 10 Forward windows.</p>

Right-Click Menu for a Specific Event



Note

This feature is available only in the MWTM client interface.

The Event window provides a subset of the MWTM main menu as a right-click menu. To see this menu, select an event and click the right mouse button. The event right-click menu provides these options:

Menu Command	Description
Edit Notes	Opens the Edit Event dialog box for the selected event.
Go To > <i>Object</i>	<p>Shows the window for the object associated with the selected event.</p> <p>If no object is associated with the event, this option is not visible.</p>

Menu Command	Description
Change Severity	<p>Changes the severity of the event. Severities include:</p> <ul style="list-style-type: none"> • Critical—The default color is red. • Indeterminate—The default color is aqua. • Informational—The default color is white. • Major—The default color is orange. • Minor—The default color is yellow. • Normal—The default color is green. • Warning—The default color is blue. <p>You can customize this field (see Changing Event Severities and Colors, page 9-35).</p>
Acknowledge	Makes the event acknowledged and records the user ID.
Unacknowledge	Makes a previously acknowledged event unacknowledged.
Event Properties	Opens the Event Properties window.
Create Sound Filter	Opens the Event Sound Filters dialog box and the Event Sound Filters List dialog box, with fields populated based on the selected event.
Help for Event	Shows context-sensitive help for the selected event in a separate browser window.

Event Table

The event table shows information about events that the MWTM event logger and event processor deliver.

You can resize each column, or sort the table based on the information in one of the columns. By default, the MWTM shows all of the columns in the event table except Internal ID, Event Name, Element Name, Original Severity, Count, Note, Change Time, Change By, Ack By, Node, Card, SP, Linkset, Link, SGMP, ASP, AS, ASPA, Interface, or RAN Backhaul.

For more information about resizing, sorting, displaying, or hiding columns, see [Navigating Table Columns, page 5-23](#).

To see detailed information about an event, right-click the event in a window, then select **Event Properties** in the right-click menu.



Note

The Event table in the web interface displays fewer columns than the client interface. Only the Category, Severity, Create Time, and Severity columns appear in the web interface. Resizing and hiding columns and right-click menus are possible only in the client interface.

Column	Description
Internal ID	Internal ID of the event. The internal ID is a unique ID for every object, that the MWTM assigns for its own internal use. This ID can also be useful when the Cisco Technical Assistance Center (TAC) is debugging problems.
Ack	Indicates whether the event has been acknowledged. To: <ul style="list-style-type: none"> • Acknowledge an unacknowledged event, use the Acknowledge toolbar button. • Make a previously acknowledged event unacknowledged, use the Unacknowledge toolbar button.
Event Name	Name of the event.
Element Name	Network element name associated with the event.
Category	Type of the event. Default values include: <ul style="list-style-type: none"> • Create—Creation event, such as the creation of a seed file. • Delete—Deletion event, such as the deletion of an object or file. • Discover—Discovery event, such as Discovery beginning. • Edit—Edit event. A user has edited an object. • Ignore—Ignore event. A user has Ignored a link or linkset. • Login—Login event. A user has logged in to the MWTM. • LoginDisable—LoginDisable event. The MWTM has disabled a user's User-Based Access authentication as a result of too many failed attempts to log in to the MWTM. • LoginFail—LoginFail event. An attempt by a user to log in to the MWTM has failed. • Logout—Logout event. A user has logged out of the MWTM. • OverWrite—OverWrite event. An existing file, such as a seed file or route file, has been overwritten. • Poll—Poll event, such as an SNMP poll. • Purge—Purge event. A user has requested Discovery with Delete Existing Data selected, and the MWTM has deleted the existing the MWTM database. • Status—Status change message generated. • Trap—SNMP trap message generated. <p>You can customize this field (see Changing Event Categories, page 9-33).</p>

Column	Description
Severity	<p>Severity of the event. Default values include:</p> <ul style="list-style-type: none"> • Critical—The default color is red. • Indeterminate—The default color is aqua. • Informational—The default color is white. • Major—The default color is orange. • Minor—The default color is yellow. • Normal—The default color is green. • Warning—The default color is blue. <p>You can customize this field (see Changing Event Severities and Colors, page 9-35).</p>
Original Severity	Original severity of the event.
Count	Number of times this event occurred.
Note	Indicates whether a note associated with the event.
Create Time	Time this event was received.
Change Time	Time this event was last updated.
Change By	User who last changed this event.
Ack By	<p>If you have not implemented the MWTM User-Based Access, name of the node that last acknowledged the event.</p> <p>If you have implemented the MWTM User-Based Access, name of the user who last acknowledged the event.</p> <p>If no one has acknowledged the event, this field is blank.</p>
Node	Name of the node associated with the event. If no node is associated with the event, None appears.
Card (RAN-O only)	Card associated with this event.
SP (ITP only)	Name of the signaling point associated with the event. If no signaling point is associated with the event, None appears.
Linkset (ITP only)	Name of the linkset associated with the event. If no linkset is associated with the event, None appears.
Link (ITP only)	Name of the link associated with the event. If no link is associated with the event, None appears.
SGMP (ITP only)	Name of the signaling gateway-mated pair associated with the event. If no signaling gateway-mated pair is associated with the event, None appears.
ASP (ITP only)	Name of the application server process associated with the event. If no application server process is associated with the event, None appears.
AS (ITP only)	Name of the application server associated with the event. If no application server is associated with the event, None appears.
ASPA (ITP only)	Name of the application server process association associated with the event. If no application server process association is associated with the event, None appears.

Column	Description
Interface	Interface associated with this event.
RAN Backhaul (RAN-O only)	RAN backhaul associated with this event.

Viewing Events for a Specific Object

You can use the MWTM to view events for a selected object. To do so, right-click an object (for example, a node) in a window, then choose **View > Recent Events** from the right-click menu. The MWTM shows recent events for the selected object (see [Viewing Recent Events](#), page 8-44).

Setting an Event Filter

You can use the MWTM to change the way event information appears.

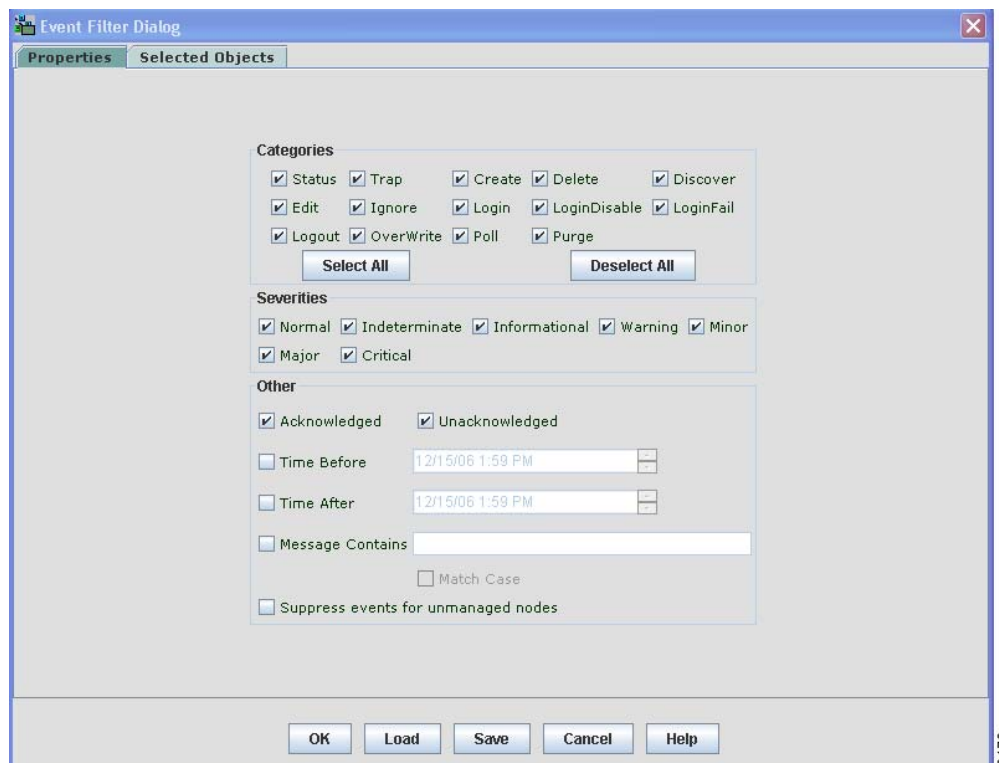


Note

You can access the Event Filter dialog box through either the client interface or the web interface. Minor differences that exist are noted in this section.

To change the way the MWTM presents event information, click **Events** in the navigation tree, then click the Event Filter tool at the top of the Event window. The Event Filter dialog box appears with the Properties tab selected.

Figure 9-2 Event Filter Dialog, Showing Event Properties



For more information about the Event Filter dialog box, see these sections:

- [Event Filter Buttons, page 9-9](#)
- [Properties Settings, page 9-9](#)
- [Selected Objects Settings, page 9-12](#)
- [Event Filter Example, page 9-15](#)

Related Topics:

- [Loading an Existing Event Filter, page 9-16](#)
- [Saving an Event Filter File, page 9-17](#)
- [Viewing Event Properties, page 9-18](#)

Event Filter Buttons

The Event Filter dialog box contains:

Button	Description
Select All	Checks all check boxes in the section.
Deselect All	Unchecks all check boxes in the section.
OK	Applies any changes you made to the event filter and closes the Event Filter dialog box.
Load	Opens the Load File Dialog: Load Filter, which you use to load an already existing event filter file. If you are viewing events for a specific object in the navigation tree of the MWTM main window, this button is not available.
Save	Opens the Save File Dialog: Save Filter, which you use to save the event filter file with a new name, or overwrite an existing event filter file. If you are viewing events for a specific object in the navigation tree of the MWTM main window, this button is not available.
Cancel	Closes the Event Filter dialog box without applying any changes to the event filter.
Help	Shows online help for the current dialog box.

Properties Settings

You use the Properties settings in the Event Filter dialog box to specify the types of event the MWTM should display in the Event window, including the category and severity of event, whether the event is acknowledged, and other properties.

To display the Properties settings, click the Properties tab in the Event Filter dialog box.

The Properties settings contain these panes:

- [Categories, page 9-10](#)
- [Severities, page 9-11](#)
- [Other, page 9-11](#)

Categories

Use the Categories pane of the Properties settings to specify which event categories you want to display in the Event window.

The Categories pane contains these default fields and buttons:


Note

These are the default categories; there might be additional categories that the MWTM system administrator defines. For information about custom categories, see [Changing Event Categories, page 9-33](#).

Check Box	Description
Status	Indicates whether Status events appear in the Event window. The check box is checked by default.
Trap	Indicates whether Trap events appear in the Event window. The check box is checked by default.
Create	Indicates whether Create events appear in the Event window. The check box is checked by default.
Delete	Indicates whether Delete events appear in the Event window. The check box is checked by default.
Discover	Indicates whether Discover events appear in the Event window. The check box is checked by default.
Edit	Indicates whether Edit events appear in the Event window. The check box is checked by default.
Ignore	Indicates whether Ignore events appear in the Event window. The check box is checked by default.
Login	Indicates whether Login events appear in the Event window. The check box is checked by default.
LoginDisable	Indicates whether LoginDisable events appear in the Event window. The check box is checked by default.
LoginFail	Indicates whether LoginFail events appear in the Event window. The check box is checked by default.
Logout	Indicates whether Logout events appear in the Event window. The check box is checked by default.
OverWrite	Indicates whether OverWrite events appear in the Event window. The check box is checked by default.
Poll	Indicates whether Poll events appear in the Event window. The check box is checked by default.
Purge	Indicates whether Purge events appear in the Event window. The check box is checked by default.

Severities

Use the Severities pane of the Properties settings to specify which event severities you want to display in the Event window.

The Severities pane contains these default fields:



Note

These are the default severities; there might be additional severities that the MWTM system administrator defines. For information about custom severities, see [Changing Event Severities and Colors, page 9-35](#).

Check box	Description
Informational	Indicates whether events of the specified severity appear in the Event window. Severities include: <ul style="list-style-type: none">• Informational• Normal• Indeterminate• Warning• Critical• Minor• Major
Normal	
Indeterminate	
Warning	
Critical	
Minor	
Major	
Note Check boxes are checked by default.	

Other

Use the Other pane of the Properties settings to further define the event filter for the Event window. These settings are applied to all event displays in the current view.

Field	Description
Acknowledged	Check box indicating whether only acknowledged events appear in the Event window. This check box is unchecked by default.
Unacknowledged	Check box indicating whether only unacknowledged events appear in the Event window. This check box is checked by default.
Time Before	Check box indicating whether only events that the MWTM logs prior to a specified date and time appear in the Event window. This check box is unchecked by default.
Time Before	Specifies the date and time prior to which events that the MWTM logs appear in the Event window. This field is dimmed unless the Time Before check box is checked.
Time After	Check box indicating whether only events that the MWTM logs after a specified date and time appear in the Event window. This check box is unchecked by default.

Field	Description
Time After	Specifies the date and time after which events that the MWTM logs appear in the Event window. This field is dimmed unless the Time After check box is checked.
Message Contains	Check box indicating whether only events that contain the specified message text appear in the Event window. This check box is unchecked by default.
Match Case	Check box indicating whether only events that match the case of the text in the Message Contains field appear in the Event window. This field is dimmed unless the Message Contains check box is checked. If the Message Contains check box is checked, the default setting for this check box is unchecked.
Suppress events for unmanaged nodes	<p>Check box for suppressing events for any objects that have been set to the unmanaged state (see Unmanaging and Managing Nodes or ITP Signaling Points, page 6-38, for steps to set an object to the unmanaged state). To suppress events for unmanaged objects, check the check box. To retain events for unmanaged objects, uncheck the check box.</p> <p>If you are viewing events for a specific object in the navigation tree of the MWTM main window, this button is not available.</p>

Selected Objects Settings



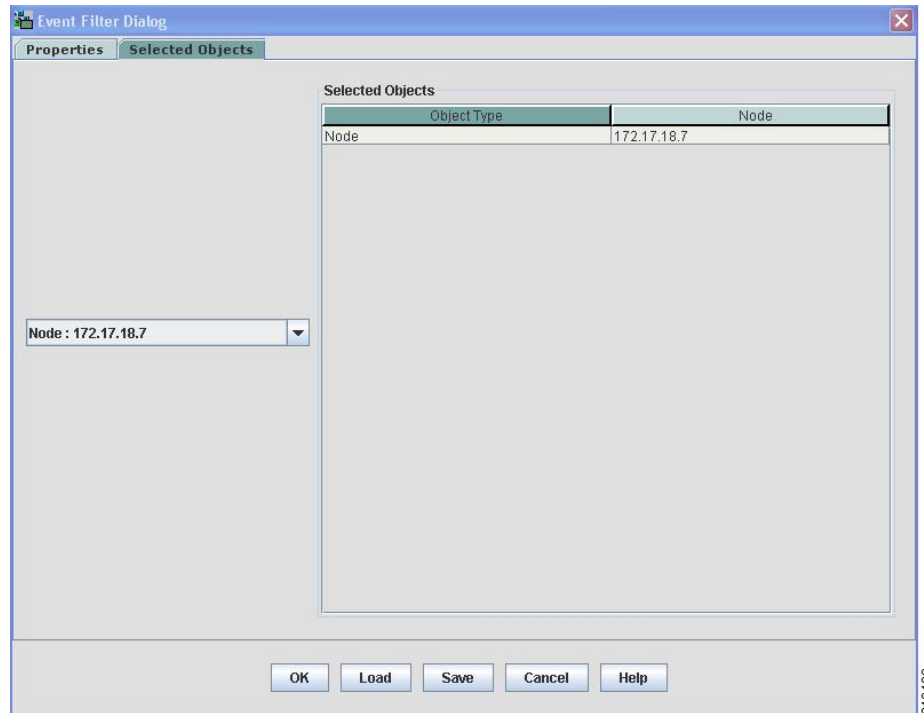
Note

The Selected Objects tab is not available in the Events dialog box if you are viewing events:

- For a specific object in the navigation tree of the MWTM main window.
- Using the web interface.

To specify an object for which the MWTM should display events in the Event window:

-
- Step 1** Click **Events** in the navigation tree.
The Events window appears in the right pane.
- Step 2** Click the Event Filter tool at the top of the Event window.
The Event Filter dialog box appears with the Properties tab selected.
- Step 3** Click the **Selected Objects** tab in the Event Filter dialog box.
The Event Filter dialog box appears with the Selected Objects tab highlighted.
-

Figure 9-3 Event Filter Dialog, Showing Event Selected Objects

The Selected Objects settings contains:

Field or Button	Description
Node	Drop-down list box of all nodes that the MWTM has discovered. If you: <ul style="list-style-type: none"> Want to filter events based on a node, select a node from the drop-down list box. Do not want to filter events based on a node, select None. The MWTM grays-out the other object fields. This is the default setting.
ApplicationServerProcess (ITP only)	Drop-down list box of all application server processes associated with the selected node: <ul style="list-style-type: none"> If you want to filter events based on an application server process, select an application server process from the drop-down list box. If you do not want to filter events based on an application server process, select None. This is the default setting.
SignalingGatewayMatedPair (ITP only)	Drop-down list box of all signaling gateway-mated pairs associated with the selected node: <ul style="list-style-type: none"> If you want to filter events based on a signaling gateway-mated pair, select a signaling gateway-mated pair from the drop-down list box. If you do not want to filter events based on a signaling gateway-mated pair, select None. This is the default setting.

Field or Button	Description
SignalingPoint (ITP only)	<p>Drop-down list box of all signaling points associated with the selected node:</p> <ul style="list-style-type: none"> If you want to filter events based on a signaling point, select a signaling point from the drop-down list box. If you do not want to filter events based on a signaling point, select None. This is the default setting.
Linkset (ITP only)	<p>Drop-down list box of all linksets associated with the selected signaling point:</p> <ul style="list-style-type: none"> If you want to filter events based on a linkset, select a linkset from the drop-down list box. If you do not want to filter events based on a linkset, select None. This is the default setting.
Link (ITP only)	<p>Drop-down list box of all links associated with the selected linkset:</p> <ul style="list-style-type: none"> If you want to filter events based on a link, select a link from the drop-down list box. If you do not want to filter events based on a link, select None. This is the default setting.
ApplicationServer (ITP only)	<p>Drop-down list box of all application servers associated with the selected signaling point:</p> <ul style="list-style-type: none"> If you want to filter events based on an application server, select an application server from the drop-down list box. If you do not want to filter events based on an application server, select None. This is the default setting.
ApplicationServerProcess Association (ITP only)	<p>Drop-down list box of all application server process associations associated with the selected application server:</p> <ul style="list-style-type: none"> If you want to filter events based on an application server process association, select an application server process association from the drop-down list box. If you do not want to filter events based on an application server process association, select None. This is the default setting.
Card (RAN-O only)	<p>Drop-down list box of all cards associated with the selected node:</p> <ul style="list-style-type: none"> If you want to filter events based on a card, select a card from the drop-down list box. If you do not want to filter events based on a card, select None. This is the default setting.
Interface	<p>Drop-down list box of all interfaces (including subinterfaces) associated with the selected node or card:</p> <ul style="list-style-type: none"> If you want to filter events based on an interface, select an interface from the drop-down list box. If you do not want to filter events based on an interface, select None. This is the default setting.

Field or Button	Description
Backhaul (RAN-O only)	Drop-down list box of all RAN backhauls associated with the selected node or card: <ul style="list-style-type: none"> If you want to filter events based on an interface, select an interface from the drop-down list box. If you do not want to filter events based on an interface, select None. This is the default setting.
Selected Objects: Object Type	Indicates the type of object, if any, on which the event filter is based.
Selected Objects: AS (ITP only)	Indicates the application server, if any, on which the event filter is based.
Selected Objects: ASP (ITP only)	Indicates the application server process, if any, on which the event filter is based.
Selected Objects: ASPA (ITP only)	Indicates the application server process application, if any, on which the event filter is based.
Selected Objects: Link (ITP only)	Indicates the link, if any, on which the event filter is based.
Selected Objects: Linkset (ITP only)	Indicates the linkset, if any, on which the event filter is based.
Selected Objects: Node	Indicates the node, if any, on which the event filter is based.
Selected Objects: SGMP (ITP only)	Indicates the signaling gateway-mated pair, if any, on which the event filter is based.
Selected Objects: SP (ITP only)	Indicates the signaling point, if any, on which the event filter is based.
Selected Objects: Card (RAN-O only)	Indicates the card, if any, on which the event filter is based.
Selected Objects: Interface	Indicates the interface or subinterface, if any, on which the event filter is based.
Selected Objects: Backhaul (RAN-O only)	Indicates the RAN backhaul, if any, on which the event filter is based.

Event Filter Example

This example shows how to set an event filter to display trap messages for warning events for a specific node.

- Step 1** Choose **Events** in the navigation tree of the MWTM main window of the client interface.
- Step 2** Click the Event Filter tool at the top of the Event window.
The Event Filter dialog box appears with the Properties tab selected.
- Step 3** In the Categories pane, uncheck all check boxes except for the Trap check box.
- Step 4** In the Severities pane, uncheck all check boxes except for the Warning check box.
- Step 5** Click the Selected Objects tab.
- Step 6** In the drop-down list box, choose a node from the list of discovered nodes.

Step 7 To activate the event filter and close the Event Filter dialog box, click **OK**.

Step 8 To save the event filter for future use:

- a. In the Event Filter dialog box, click **Save**. This action opens the Save Filter dialog box.
- b. In the Save Filter dialog box, enter a meaningful name in the Filename text box (for example, Node109-WarningTraps).
- c. Click **OK** to close the Save Filter dialog box.
- d. Click **OK** to close the Event Filter dialog box.

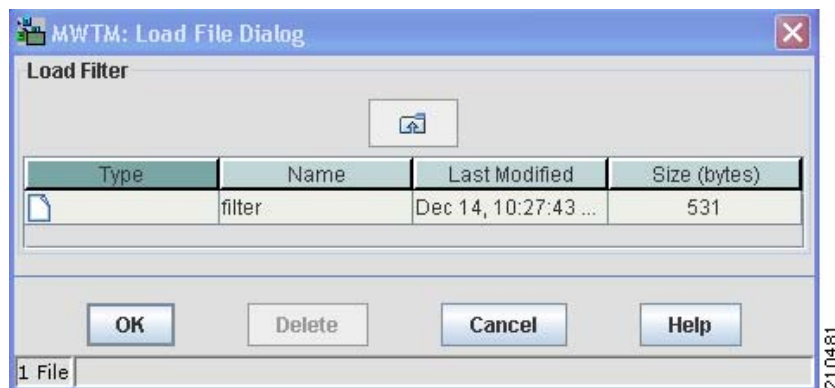
In the future, to view traps for warning events for Node109, click **Load** in the Event Filter dialog box, choose the Node109-WarningTraps filter, then click **OK**. The Events window will only display warning traps for Node109 until you load a different event filter or change the current one.

Loading an Existing Event Filter

You use the MWTM to load a specific event filter file and change the list of event filter files.

To load an existing event filter, click **Load** in the Event Filter dialog box. The Load File Dialog: Load Filter dialog box appears.

Figure 9-4 Load File Dialog: Load Filter Dialog



The Load File Dialog: Load Filter contains:

Field or Button or Icon	Description
Type	Icon indicating whether the item in the table is a file or a folder.
Name	Name of the event filter file or folder.
Last Modified	Date and time the event filter file or folder was last modified.
Size (bytes)	Size of the event filter file or folder, in bytes.
Number of Files (appears in lower-left corner)	Total number of event filter files and folders.

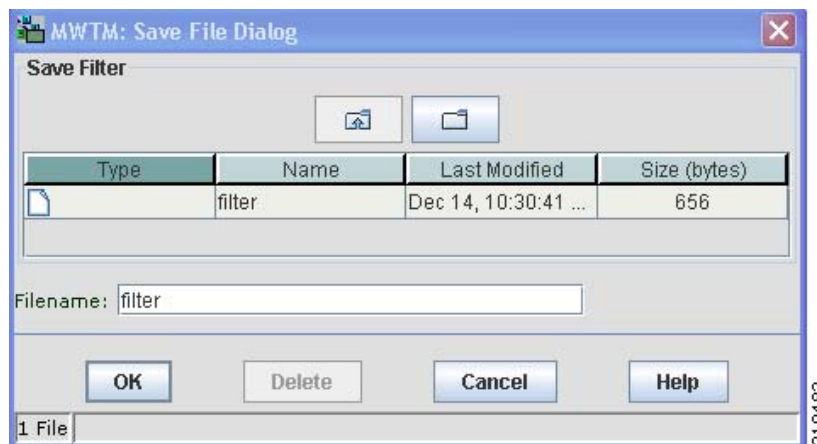
Field or Button or Icon	Description
OK	Loads the selected event filter, saves any changes you made to the list of files, and closes the dialog box. To load an event filter file, double-click it in the list, select it in the list and click OK , or enter the name of the file and click OK . The MWTM loads the event filter file, saves any changes you made to the list of files, closes the Load File Dialog: Load Filter dialog box, and returns to the Event Filter dialog box.
Delete	Deletes the selected file from the event filter file list. The MWTM issues an informational message containing the name and location of the deleted file.
Cancel	Closes the dialog box without loading an event filter file or saving any changes to the event filter file list.
Help	Shows online help for the dialog box.

Saving an Event Filter File

You use the MWTM to save a specific event filter file and change the list of event filter files.

When you are satisfied with the filter settings, click **Save** in the Event Filter dialog box. The Save File Dialog: Save Filter dialog box appears.

Figure 9-5 Save File Dialog: Save Filter Dialog



The Save File Dialog: Save Filter contains:

Field or Button or Icon	Description
Type	Icon indicating whether the item in the table is a file or a folder.
Name	Name of the event filter file or folder.
Last Modified	Date and time the event filter file or folder was last modified.
Size (bytes)	Size of the event filter file or folder, in bytes.

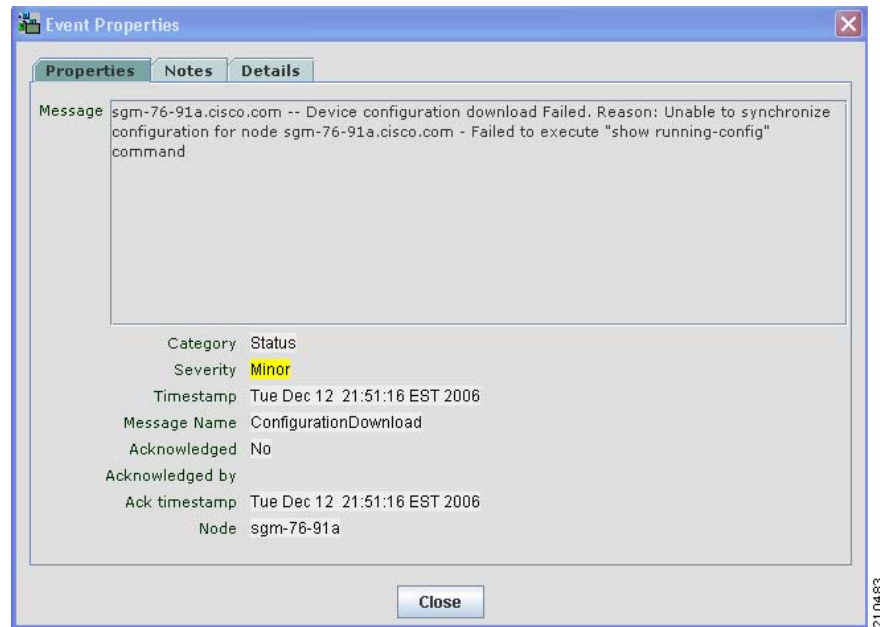
Field or Button or Icon	Description
Filename	<p>Name by which you want to save the event filter file.</p> <p>If you create a new event filter filename, you can use any letters, numbers, or characters in the name that are allowed by your operating system. However, if you include any spaces in the new name, the MWTM converts those spaces to dashes. For example, the MWTM saves file <i>a b c</i> as <i>a-b-c</i>.</p>
Number of Files (displayed in bottom left corner)	Total number of event filter files and folders.
OK	<p>Saves any changes you made to the current event filter file and closes the dialog box.</p> <p>To save the event filter file with a new name, use one of these procedures. To save the file with:</p> <ul style="list-style-type: none"> • A completely new name, enter the new name and click OK. • An existing name, overwriting an old event filter file, select the name in the list and click OK. <p>The MWTM saves the event filter file with the new name, saves any changes you made to the list of files, closes the Save File Dialog: Save Filter dialog box, and returns to the Event Filter dialog box.</p>
Delete	Deletes the selected file from the event filter file list. The MWTM issues an informational message containing the name and location of the deleted file.
Cancel	Closes the dialog box without saving the event filter file or saving any changes to the event filter file list.
Help	Shows online help for the dialog box.

Viewing Event Properties

You use the MWTM to view detailed information about a selected event, including its associated object, status, and other information.

To view detailed information about an event, right-click the event in a window, then select **Event Properties** in the right-click menu.

The Event Properties dialog box appears.

Figure 9-6 Event Properties Dialog

The Event Properties dialog box contains:

Tab, Field, or Button	Description
Properties	Tab that shows detailed information about the selected event.
Message	<p>Message text for the event.</p> <p>You can customize this field (see Changing the Way the MWTM Processes Events, page 9-27).</p>
Category	<p>Type of the event. Default values are:</p> <ul style="list-style-type: none"> • Create—Creation event, such as the creation of a seed file. • Delete—Deletion event, such as the deletion of an object or file. • Discover—Discovery event, such as Discovery beginning. • Edit—Edit event. A user has edited an object. • Ignore—Ignore event. A user has ignored a link or linkset. • Login—Login event. A user has logged in to the MWTM. • LoginDisable—LoginDisable event. The MWTM has disabled a user's User-Based Access authentication as a result of too many failed attempts to log in to the MWTM. • LoginFail—LoginFail event. A user's attempt to log in to the MWTM has failed. • Logout—Logout event. A user has logged out of the MWTM.

Tab, Field, or Button	Description
Category (continued)	<ul style="list-style-type: none"> • OverWrite—OverWrite event. An existing file, such as a seed file or route file, has been overwritten. • Poll—Poll event, such as an SNMP poll. • Purge—Purge event. A user has requested Discovery with Delete Existing Data selected, and the MWTM has deleted the existing MWTM database. • Status—Status change message generated. • Trap—SNMP trap message generated. <p>You can customize this field (see Changing Event Categories, page 9-33).</p>
Severity	<p>Severity of the event. Default values are:</p> <ul style="list-style-type: none"> • Critical—The default color is red. • Indeterminate—The default color is aqua. • Informational—The default color is white. • Major—The default color is orange. • Minor—The default color is yellow. • Normal—The default color is green. • Warning—The default color is blue. <p>You can customize this field (see Changing Event Severities and Colors, page 9-35).</p>
Timestamp	Date and time the event was logged.
Message Name	<p>User-specified message name for the event that the MWTM uses for trap forwarding. The default message name is <i>MWTM</i>.</p> <p>For more information about user-specified message names and trap forwarding, see Forwarding Events as Traps to Other Hosts, page 9-40.</p>
Acknowledged	Indicates whether the event has been acknowledged.
Acknowledged By	Name of the node that last acknowledged the event. If no one has acknowledged the event, this field is blank.
Ack Timestamp	Date and time the event was last acknowledged or unacknowledged.
Node	Name of the node associated with the event. If no node is associated with the event, None appears.
Signaling Point (ITP only)	Name of the signaling point associated with the event. If no signaling point is associated with the event, None appears.
Linkset (ITP only)	Name of the linkset associated with the event. If no linkset is associated with the event, None appears.
Link (ITP only)	Name of the link associated with the event. If no link is associated with the event, None appears.
AS (ITP only)	Name of the application server associated with the event. If no application server is associated with the event, None appears.
ASP (ITP only)	Name of the application server process associated with the event. If no application server process is associated with the event, None appears.

Tab, Field, or Button	Description
ASPA (ITP only)	Name of the application server process association associated with the event. If no application server process association is associated with the event, None appears.
SGMP (ITP only)	Name of the signaling gateway-mated pair associated with the event. If no signaling gateway-mated pair is associated with the event, None appears.
Rtr Interface	Name of the interface associated with the event.
Ran Backhaul (RAN-O only)	Name of the RAN backhaul associated with the event.
Card (RAN-O only)	Name of the card associated with the event.
Notes	Tab that shows notes associated with this event.
Last Update	Date and time the Notes field for this event was last updated. If no note is currently associated with this event, this field shows the value <i>Not Set</i> .
Notes	Notes associated with this event. If no note is currently associated with this event, this field shows the value <i>No Notes</i> .
Close	Closes the Event Properties dialog box.
Details	Tab that shows specific event attributes.

Related Topic:

[Viewing Basic Information for All Events, page 9-2](#)

Attaching a Note to an Event

You use the MWTM to annotate an event, attaching a descriptive string to the event.

To annotate an event, right-click an event in the Event window, then select **Edit Notes** in the right-click menu.

The Edit Event dialog box appears.

Figure 9-7 **Edit Event Dialog**



The Edit Event dialog box contains:

Field or Button	Description
Name	Message text of the event.
Last Update	Date and time the Notes field for this event was last updated. If no note is currently associated with this event, this field shows the value <code>Not Set</code> . You cannot edit this field.
Notes	Notes to associate with this event. In this field, you can enter any important information about the event, such as its associated object, what triggered the event, how often it has occurred, and so on.
Save	Saves changes you have made to the event information and exits the Edit Event dialog box.
Cancel	Exits the Edit Event dialog box without saving any changes.
Help	Shows online help for the current window.

Related Topics:

- [Viewing Basic Information for All Events, page 9-2](#)
- [Viewing Event Properties, page 9-18](#)

Viewing Archived Event Files on the Web

The All Network Event Archived Files page provides access to archived event files within ITP or RAN-O networks for the server to which you are connected.

To access archived event files:

-
- Step 1** Within a Web browser, navigate to the MWTM web interface (for details, see [Accessing the MWTM Web Interface, page 11-1](#)).
- Step 2** Choose **File Archive > Events** from the Web navigation tree.
Within the Last Modified Date column, choose the day you want to view archived event files for.
- Step 3** Adjacent to the date you have chosen, click on the **Status Changes and SNMP Traps** link under **View**. The Network Status Archive page appears, showing a list of the status and trap messages in the archive.
-

Viewing the Event Metrics Report on the Web

The Event Metrics Report page shows a number of metrics for the MWTM, based on the number of messages of each type and severity that the MWTM receives. This report is applicable for both ITP and RAN-O networks.

To view the event metrics report using the MWTM Web interface:

-
- Step 1** Within a Web browser, navigate to the MWTM Web interface (for details, see [Accessing the MWTM Web Interface, page 11-1](#)).
- Step 2** Click **Reports > Statistics > Events**, or from the Reports page, click **Events**.
-

The Event Metrics Report page contains the following tables:

- [Message Types Table, page 9-23](#)
- [Message Severity Table, page 9-24](#)
- [Status Messages Table, page 9-24](#)
- [Trap Messages Table, page 9-25](#)
- [Messages/Day Table, page 9-26](#)
- [Status Change Messages/Day Table, page 9-26](#)
- [SNMP Trap Messages/Day Table, page 9-26](#)
- [Files Processed Table, page 9-27](#)
- [Date Range Table, page 9-27](#)

Message Types Table

The Message Types table contains the following columns:

Column	Description
Message Types	Total number of messages of each type that the MWTM received. Possible types are: <ul style="list-style-type: none">• Total Messages—Total number of messages of all types• Total Status—Total number of status change messages• Total Traps—Total number of SNMP trap messages
Num	Number of messages of each type that the MWTM received.
Num/Total	Number of messages of a given type that the MWTM received, divided by the total number of messages that the MWTM received, shown as a percentage.

Message Severity Table

The Message Severity table contains the following columns:

Column	Description
Message Severity	Total number of messages (status change messages and SNMP trap messages) of each severity that the MWTM received: <ul style="list-style-type: none">• Total Warning• Total Normal• Total Unclass• Total Minor• Total Major• Total Informational• Total Error• Total Critical• Total Admin
Num	Number of messages of each severity that the MWTM received.
Num/Total	Number of messages of a given severity that the MWTM received, divided by the total number of messages that the MWTM received, shown as a percentage.

Status Messages Table

The Status Messages table contains the following columns:

Column	Description
Status Messages	Total number of status change messages of each severity that the MWTM received. Possible severities are: <ul style="list-style-type: none">• Status Minor• Status Normal• Status Major• Status Warning• Status Informational• Status Critical• Status Unclass• Status Error• Status Admin
Num	Number of status change messages of each severity that the MWTM received.

Column	Description
Num/Status	Number of status change messages of a given severity that the MWTM received, divided by the total number of status change messages that the MWTM received, shown as a percentage.
Num/Total	Number of status change messages of a given severity that the MWTM received, divided by the total number of messages (status change messages and SNMP trap messages) that the MWTM received, shown as a percentage.

Trap Messages Table

The Trap Messages table contains the following columns:

Column	Description
Trap Messages	Total number of SNMP trap messages of each severity that the MWTM received. Possible severities are: <ul style="list-style-type: none"> • Trap Warning • Trap Unclass • Trap Normal • Trap Minor • Trap Major • Trap Informational • Trap Error • Trap Critical • Trap Admin
Num	Number of SNMP trap messages of each severity that the MWTM received.
Num/Trap	Number of SNMP trap messages of a given severity that the MWTM received, divided by the total number of SNMP trap messages that the MWTM received, shown as a percentage.
Num/Total	Number of SNMP trap messages of a given severity received by the MWT, divided by the total number of messages (status change messages and SNMP trap messages) that the MWTM received, shown as a percentage.

Messages/Day Table

The Messages/Day table contains the following columns:

Column	Description
Day	Date for which metrics are calculated.
NumMsgs	Total number of messages that the MWTM received on a given day.
NumMsgs/TotalMsgs	Number of messages that the MWTM received on a given day, divided by the total number of messages (status change messages and SNMP trap messages) that the MWTM received on all days, shown as a percentage.

Status Change Messages/Day Table

The Status Change Messages/Day table contains the following columns:

Column	Description
Day	Date for which metrics are calculated.
NumStatMsgs	Total number of status change messages that the MWTM received on a given day.
NumStatMsgs/TotalMsgs	Number of status change messages that the MWTM received on a given day, divided by the total number of messages (status change messages and SNMP trap messages) that the MWTM received on all days, shown as a percentage.
NumStatMsgs/TotalStatMsgs	Number of status change messages that the MWTM received on a given day, divided by the total number of status change messages that the MWTM received on all days, shown as a percentage.

SNMP Trap Messages/Day Table

The Status Change Messages/Day table contains the following columns:

Column	Description
Day	Date for which metrics are calculated.
NumTrapMsgs	Total number of SNMP trap messages that the MWTM received on a given day.
NumTrapMsgs/TotalMsgs	Number of SNMP trap messages that the MWTM received on a given day, divided by the total number of messages (status change messages and SNMP trap messages) that the MWTM received on all days, shown as a percentage.
NumTrapMsgs/TotalTrapMsgs	Number of SNMP trap messages that the MWTM received on a given day, divided by the total number of SNMP trap messages that the MWTM received on all days, shown as a percentage.

Files Processed Table

The Files Processed table lists all files that the MWTM has processed.

Date Range Table

The Date Range table displays the date and time when the MWTM began collecting metrics, and the date and time of the most recent metrics.

Changing the Way the MWTM Processes Events

The three types of MWTM events are:

- **Trap events**—Incoming events that the MWTM does not solicit
- **Status events**—Status changes that the MWTM detects
- **User Action events**—Events that user actions trigger

Within those broad types, there occur subordinate types of events, each with a default category, severity, color, message text, and event help file. You use the MWTM to change the default characteristics of each type of event, tailoring them to meet your needs.



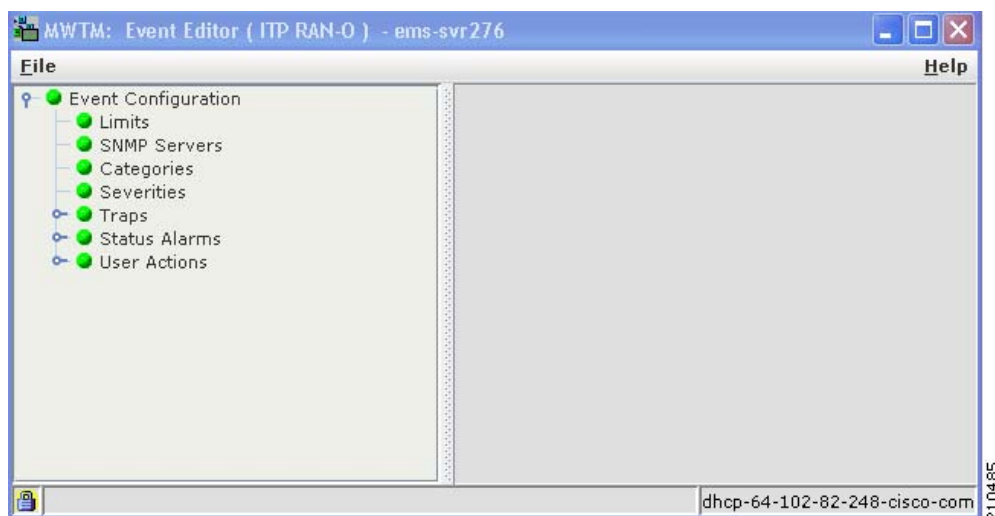
Note

Changes you make to the MWTM event processing can adversely affect your operating environment. In most environments, the MWTM recommends that you use the default event-processing settings without modification.

To change the MWTM event processing, use one of these procedures:

- Choose **Tools > Event Editor** from the MWTM main menu.
- Choose **Start > Programs > Cisco MWTM Client > MWTM Event Editor** in Windows.
- Enter the **mwtm eventeditor** command (see [mwtm eventeditor](#), page B-22).

The MWTM launches the MWTM Event Editor.

Figure 9-8 MWTM Event Editor

You use the Event Editor to customize the visible category, severity, color, and message associated with events; and load, save, and deploy customized event configurations. You can also specify a list of SNMP servers to which the MWTM should forward events in the form of traps.

The high-level MWTM event processing settings appear in the navigation tree in the left pane in the MWTM Event Editor window. The detailed settings for each high-level setting appear in the content area in the right pane.

The MWTM Event Editor menu provides these options:

Menu Command	Description
File > Load Draft	Loads the local copy of the event configuration that you saved.
File > Save Draft (Ctrl-S)	Saves a local copy of the event configuration, including any changes you made by using the Event Editor. You can save only one local copy of the event configuration. You cannot specify a filename for the local copy.
File > Load Default	Loads the default event configuration on this MWTM client. The default event configuration is the standard event configuration that the MWTM uses when it is first installed. The default event configuration stored on the MWTM server and shared by all MWTM clients, but the clients cannot modify it.
File > Load Running	Loads the event configuration that is currently running on the MWTM server.
File > Load Backup	Loads the backup event configuration from the MWTM server. The MWTM creates a backup event configuration every time the event configuration on the MWTM server is overwritten.
File > Revert	Reverts to the last event configuration that was loaded on the MWTM client. This could be the draft, default, running, or backup event configuration.

Menu Command	Description
File > Deploy	<p>Deploys the event configuration that is currently being edited on this MWTM client to the MWTM server.</p> <p>The deployed event configuration does not take effect until you restart the MWTM server. When you restart the MWTM server, the MWTM automatically reflects your changes to the event configuration on the MWTM server and on all MWTM clients that connect to that server, and reflects any new or changed categories, severities, and other event characteristics in its web navigation bars.</p>
File > Exit	<p>Closes the Event Editor window. If you have made any changes to the event configuration, the MWTM asks if you want to save the changes before leaving the window. Click:</p> <ul style="list-style-type: none"> • Save Draft to save the changes in a local copy of the event configuration. You can save only one local copy of the event configuration. You cannot specify a filename for the local copy. • Deploy to deploy the event configuration, including any changes you made, to the MWTM server. <p>The deployed event configuration does not take effect until you restart the MWTM server. When you restart the MWTM server, the MWTM automatically reflects your changes to the event configuration on the MWTM server and on all MWTM clients that connect to that server, and reflects any new or changed categories, severities, and other event characteristics in its web display navigation bars.</p> <ul style="list-style-type: none"> • No or Cancel to close the prompt window and return to the Event Editor window.
Help > Topics (F1)	Shows the table of contents for the MWTM online help.
Help > Window (Shift-F1)	Shows online help for the current window.
Help > About (F3)	Shows build date, version, SSL support, and copyright information about the MWTM application.

This section provides this information:

- [Changing Event Limits, page 9-30](#)
- [Specifying a List of SNMP Servers for Trap Forwarding, page 9-32](#)
- [Changing Event Categories, page 9-33](#)
- [Changing Event Severities and Colors, page 9-35](#)
- [Configuring Trap, Status Alarm, or User Action Events, page 9-36](#)

Changing Event Limits

To change limits for the MWTM event database, select the turner beside Event Configuration, then click **Limits**. The Limits Configuration window appears in the right pane.

Field	Description
MaxEventDbRecords	<p>Sets the maximum number of events allowed in the in-memory database. You can observe these events in the client NAPI. The MWTM archives deleted events.</p> <p>By default, the MWTM event database can hold a maximum of 5,000 events. If the database exceeds 5,000 events, the MWTM deletes the oldest events until the database is reduced to 5,000 events.</p> <p>To change the size of the MWTM event database, enter the new size, in number of events, in this field. The valid range is 0 events (that is, no limit) to an unlimited number of events. The default setting is 5,000 events.</p> <p>Note As you increase the size of the event database, you negatively impact the performance of the MWTM server and clients is impacted.</p>
MaxEventTimeToLive	<p>Sets the maximum length of time, in days, the MWTM should retain events in the in-memory database. You can observe these events in the client NAPI. The MWTM archives deleted events.</p> <p>By default, the MWTM event database retains events a maximum of 7 days. The MWTM deletes events that are older than 7 days.</p> <p>To change the maximum age for events, enter the new age, in days, in this field. The valid range is 0 days (events are purged at each maintenance interval) to an unlimited number of days. The default setting is 7 days.</p>
CompressEventDbInterval	<p>Sets the length of time, in minutes, between maintenance checks of the in-memory database. The MWTM archives these events when this task runs. Also, the oldest archived events may be deleted from the database.</p> <p>By default, the MWTM performs maintenance on the event database every 15 minutes, deleting all events in excess of 5000 and all events older than 7 days.</p> <p>To change the maintenance interval, enter the new interval, in minutes, in this field. The valid range is 0 minutes (perform continual maintenance; not advised) to an unlimited number of minutes. The default setting is 60 minutes.</p> <p>Note The smaller the maintenance interval, the greater the negative impact on the performance of the MWTM server and clients.</p>

Field	Description
AutomationTimeout	<p>Sets the maximum length of time, in seconds, the MWTM should allow an event automation script to run.</p> <p>By default, the MWTM event database allows an event automation script to run for 300 seconds (5 minutes) before canceling the script and moving on.</p> <p>To change the event automation timeout interval, enter the new interval, in seconds, in this field. The valid range is 0 seconds (no automation) to an unlimited number of seconds. The default setting is 300 seconds.</p> <p>Note The MWTM runs each automation script sequentially, not in parallel. Therefore, the longer the automation timeout interval, the greater the chance that a failed script can delay subsequent scripts.</p>
ProcessUndiscovered	<p>Determines whether the MWTM should process events from undiscovered nodes:</p> <ul style="list-style-type: none"> • False—Do not process events from undiscovered nodes. This setting is the default. • True—Begin processing events from undiscovered nodes.
Send Updates	<p>Determines whether the MWTM should send traps northbound:</p> <ul style="list-style-type: none"> • False—Do not send traps northbound when an event is updated or deleted. Only send traps when an event is new. This setting is the default. • True—Send traps northbound when an event is updated, deleted, or new.
ProcessUnrecognizedTraps	<p>Determines whether the MWTM should create events for unrecognized traps:</p> <ul style="list-style-type: none"> • False—(Default setting) Do not create events for unrecognized traps. • True—Create events for unrecognized traps. This setting is the default.
TrapGenThrottle	<p>A delay (in milliseconds) between each trap sent to a northbound host. This value is helpful if the MWTM is sending traps faster than the northbound host can receive them. The default is 10 milliseconds.</p>
HeartbeatTrapInterval	<p>A delay (in seconds) between each heartbeat trap sent to a northbound host. If this value is zero or less than one, no heartbeat trap is sent. The default is 0.</p>
ArchiveAge	<p>The maximum age, in days, of all archived events and alarms in the database. The default is 31 days.</p>
MaxAlarmAge	<p>The maximum age, in days, of all active alarms in the database. The default is 7 days.</p>

Field	Description
CloneAlarms	Determines whether the MWTM should create separate alarm instances from underlying events: <ul style="list-style-type: none"> False—No alarms are created. True—Alarms are created from underlying events. This setting is the default.
AllowEventDeduplication	Determines whether the MWTM should eliminate redundant (duplicate) events if a correlation key has been specified and enabled: <ul style="list-style-type: none"> False—The MWTM does not eliminate duplicate alarms. This setting is the default. True—The MWTM eliminates duplicate alarms.
AllowStateAggregation	Determines whether the MWTM should allow alarms to change the state of the node: <ul style="list-style-type: none"> False—Alarms will not affect the node state. True—Alarms will affect the node state. This setting is the default.
ClearedAlarmsTimetoLive	The time, in minutes, before the MWTM archives cleared alarms.
SendEvents	Determines whether the MWTM should send events to a northbound system: <ul style="list-style-type: none"> False—Does not send events to the northbound system. True—Sends events to the northbound system. This setting is the default.
SendAlarms	Determines whether the MWTM should send alarms to a northbound system: <ul style="list-style-type: none"> False—Does not send alarms to the northbound system. This setting is the default. True—Sends alarms to the northbound system.

Specifying a List of SNMP Servers for Trap Forwarding

You use the MWTM to specify a list of SNMP servers, or hosts, to which the MWTM should forward events in the form of traps.

For more information about enabling MWTM trap forwarding, see [Forwarding Events as Traps to Other Hosts, page 9-40](#).

To specify the list of hosts, select the turner beside Event Configuration, then click **SNMP Servers**. The SNMP Servers Configuration window appears in the content area in the right pane.

Field or Button	Description
Host	Name of the host NMS that should receive traps from the MWTM. The host must be IP-routable, and the name must be a valid IP address or DNS name.
Port	Host port number to which the MWTM should forward traps.
Community	SNMP community string that the MWTM should include in forwarded traps.

Field or Button	Description
Version	Trap version to forward. Valid values are 1 and 2c.
Trap Type	Type of trap that the MWTM should forward to this host. Valid trap types are: <ul style="list-style-type: none"> CISCO-SYSLOG: The CISCO-SYSLOG-MIB clogMessageGenerated trap. CISCO-EPM-NOTIFICATION: CISCO-EPM-NOTIFICATION-MIB ciscoEpmNotificationRev1 trap.
Add	Adds a new hostname to the bottom of the list. Type over the default values with the new values.
Delete	Deletes the selected hostname from the list.
Send a trap for all events	Checks the Send Traps check box for all MWTM events. Click this button if you want the MWTM to forward all events to the list of hosts. If you click this radio button, and then you uncheck even a single Send Traps check box for any event, the MWTM unchecks this button. This radio button is mutually exclusive with the Send a trap for no events button.
Send a trap for no events	Unchecks the Send Traps check box for all MWTM events. Click this button if you do not want the MWTM to forward any events to the list of hosts. This is the default setting. If you click this radio button, and then you check even a single Send Traps check box for any event, the MWTM unchecks this button. This radio button is mutually exclusive with the Send a trap for all events button.

Changing Event Categories

To change categories for the MWTM event database, click the turner beside Event Configuration, then click **Categories**. The Categories Configuration window appears in the content area in the right pane.



Field or Button	Description
Category Name	Lists the names of the currently defined MWTM event categories. By default, the MWTM provides these event categories: <ul style="list-style-type: none"> Status—Status change message generated. Trap—SNMP trap message generated. Create—Creation event, such as the creation of a seed file. Delete—Deletion event, such as the deletion of an object or file.
Category Name (continued)	<ul style="list-style-type: none"> Discover—Discovery event, such as Discovery beginning. Edit—Edit event. A user has edited an event, linkset, or node. Ignore—Ignore event. A user has Ignored a link or linkset.

Field or Button	Description
Category Name (continued)	<ul style="list-style-type: none"> • Login—Login event. A user has logged in to the MWTM. • LoginDisable—LoginDisable event. The MWTM has disabled a user's User-Based Access authentication as a result of too many failed attempts to log in to the MWTM. • LoginFail—LoginFail event. An attempt by a user to log in to the MWTM has failed. • Logout—Logout event. A user has logged out of the MWTM. • OverWrite—OverWrite event. An existing file, such as a seed file or route file, has been overwritten. • Poll—Poll event, such as an SNMP poll. • Purge—Purge event. A user has requested Discovery with Delete Existing Data selected, and the MWTM has deleted the existing the MWTM database. <p>To change the name of an existing event category, highlight the category name and type over it with the new name. For example, you could replace every occurrence of LoginFail with BadLogin.</p>
Add	Adds a new category name to the bottom of the list. Type over the default category name with the new name.
Delete	<p>Deletes the selected category name from the list.</p> <p>If events in the MWTM database use the deleted category name, the Entry Substitution dialog box appears. Use this dialog box to select a new category name in place of the deleted category name. Select an existing category name from the drop-down list box, or enter a new category name. If you enter a new category name, the MWTM adds it to the Category Name field.</p>

Changing Event Severities and Colors

To change severities or colors for the MWTM event database, select the turner beside Event Configuration, then click **Severities**. The Severities Configuration window appears in the content area in the right pane.

Field or Button	Description
Severity Name	<p>Lists the names of the currently defined MWTM event severities.</p> <p>By default, the MWTM provides these event severities:</p> <ul style="list-style-type: none"> • Informational • Normal • Indeterminate • Warning • Critical • Minor • Major <p>To change the name of an existing event severity, highlight the severity name and type over it with the new name. For example, you could replace every occurrence of Normal with Clean.</p>
Severity Color	<p>Lists the colors of the currently defined MWTM event severities.</p> <p>By default, the MWTM provides these event colors:</p> <ul style="list-style-type: none"> • Informational—The default color is white. • Normal—The default color is green. • Indeterminate—The default color is aqua. • Warning—The default color is blue. • Critical—The default color is red. • Minor—The default color is yellow. • Major—The default color is orange. <p>To change the color associated with an existing severity, select the current color, then select a new color from the drop-down list box. For example, you can display Warning events in maroon instead of yellow.</p>
Add	Adds a new severity name to the bottom of the list. Type over the default severity name with the new name, then select a color from the drop-down list box. The default color is white.
Delete	<p>Deletes the selected severity name from the list.</p> <p>If events in the MWTM database use the deleted severity name, the Entry Substitution dialog box appears. Use this dialog box to select a new severity name in place of the deleted severity name. Select an existing severity name from the drop-down list box, or enter a new severity name. If you enter a new severity name, the MTWM adds it to the Severity Name field.</p>

Field or Button	Description
Move Up	 <p>Caution Do not move the Normal severity from the top of this list! Moving this severity category lower in the list will negatively impact the handling of events in the MWTM.</p> <p>Moves the selected severity up in the list.</p> <p>The order of the severities that appear in this list determines the sort order of the Severity column in the event table (see Event Table, page 9-5).</p> <p>To move a severity higher in the order of severities, click Move Up.</p>
Move Down	 <p>Caution Do not move the Normal severity from the top of this list! Moving this severity category lower in the list will negatively impact the handling of events in the MWTM.</p> <p>Moves the selected severity down in the list.</p> <p>The order of the severities that appear in this list determines the sort order of the Severity column in the event table (see Event Table, page 9-5).</p> <p>To move a severity lower in the order of severities, click Move Down.</p>

Configuring Trap, Status Alarm, or User Action Events

The MWTM can detect these event types:

- **Traps**—Events that are triggered by SNMP traps or notifications
- **Status Alarms**—Events that are triggered by status changes
- **User Actions**—Events that are triggered by user actions

To configure the event parameters for any of these event types:

-
- Step 1** Choose **Tools > Event Editor** from the MWTM main menu.
- Step 2** Select the turner beside Event Configuration.
- Step 3** Select the turner beside the event type that you want to configure (Traps, Status Alarms, or User Actions).
- The MWTM lists the currently defined events in the navigation tree under the event type.
- Step 4** To add an event to an event type, right-click the event type and select **Add** from the right-click menu.
- The MWTM opens the Add Entry dialog box, which lists the events that the MWTM supports but have not yet been configured.
- Step 5** Select an event that you want to configure and click **Add**.
- The MWTM adds the selected event to the list of configured events and creates a Default entry for the event in the left pane.
- Step 6** Click the **Default** entry in the left pane.
- The Event Configuration pane appears in the right pane.


Step 7 Configure the event by adjusting the parameters.



Step 8 To delete an event, right-click the event in the left pane and click **Delete**.

The Event Configuration pane contains:

Field or Button	Description
Name	Name of the event, such as cItpRouteStateChange. You cannot change this field.
Event Keys and Setting	Names of the event keys, such as RouteDestinationState, and their settings, such as False. You cannot change the names of the event keys, but you can change their settings. To change an event key setting, select a new setting from the drop-down list box. For example, you can change the setting for RouteDestinationState from Accessible to Unknown.
Category	Category of the event, such as Trap. To change the category, select a new category from the drop-down list box.
Severity	Severity of the event, such as Normal. To change the severity, select a new severity from the drop-down list box. Note The order of the severities affects the sort order of the severities in the MWTM client tables.
Event Name	User-specified name for the event, that the MWTM uses for trap forwarding. If you want the MWTM to forward this event in the form of a trap to another host, you can specify a new, more meaningful name for the event. The new name can be from 1 to 30 characters, and can contain any letters (upper- or lowercase), any numbers, and any special characters. If you do not specify a new name, the MWTM uses the default name, MWTM. For more information about trap forwarding, see Forwarding Events as Traps to Other Hosts, page 9-40 .
Message	Message text associated with the event. To change the message text, type over the message text. You can also insert variable text in the message. To do so, right-click in the message text area. A popup menu of the valid substitutions for this event appears. To insert a variable in the text area, select from the popup menu.

Field or Button	Description
Help File	<p>Help file associated with the event.</p> <p>By default, the MWTM provides extensive type-specific help for events. However, you can use the MWTM to provide your own enterprise-specific instructions to operators in the help file.</p> <p>To change the help file, create a new HTML help file or change the default MWTM help file. If you installed the MWTM in:</p> <ul style="list-style-type: none"> • The default directory, <i>/opt</i>, then the default help files are in the <i>/opt/CSCOs/gm/apache/share/htdocs/eventHelp</i> directory. • A different directory, then the default help directory and files are located in that directory. <p>If you use an MWTM help file as a basis for your help file, rename it when you save it; do not use the existing MWTM name. If you do, the next time you install the MWTM, the MWTM overwrites the file and you lose your changes.</p> <p>When you have created your new help files, store them in the <i>/opt/CSCOs/gm/apache/share/htdocs/customHelp</i> directory. This directory and its contents are preserved when you upgrade to a new MWTM release. If you do not store your new help files in the <i>/customHelp</i> directory, the files are lost the next time you upgrade to a new MWTM release.</p> <p>When you have created your new help files and stored them in the <i>/customHelp</i> directory, enter the new help file path and filename in the Help File field.</p> <p>After you deploy the new event settings and restart the MWTM server, whenever you display help for the trap, the MWTM shows your new, custom help file.</p>
Open	<p>Opens the help file associated with the event.</p> <p>To see the help file, click Open. The MWTM shows context-sensitive help for the selected event in a separate web browser.</p>
Action: Run	<p>Automation command or script for the event that a UNIX process runs.</p> <p>You use the MWTM to automate events. That is, you can configure the MWTM to call a UNIX script to drive automatic paging or e-mail, for example, whenever the MWTM logs an event for which you have defined an automation script.</p> <p>To configure automation for an event, enter a Run line with this format:</p> <p><i>UNIXCommand EventParameters</i></p> <p>where:</p> <ul style="list-style-type: none"> • <i>UnixCommand</i> specifies either a binary command name or a shell script. • <i>EventParameters</i> are information from the event that the MWTM sends to <i>UnixCommand</i> as parameters. The set of <i>EventParameters</i> is the same as the set of Message element parameters, and they are specified the same way.

Field or Button	Description
Action: Run (continued)	<p>For example, this Run line:</p> <pre>/users/johndoe/auto-inhibit.exp \$NodeDisplayName \$User</pre> <p>causes these automatic actions whenever the MWTM logs the associated event:</p> <ul style="list-style-type: none"> • The MWTM spawns a UNIX process to execute the <code>/users/johndoe/auto-inhibit.exp</code> script. • The MWTM passes the <code>\$NodeDisplayName</code> and <code>\$User</code> parameters to the script. <p>After you deploy the new event settings and restart the MWTM server, the specified event causes the automation script to run.</p> <p>When configuring automation for events, remember:</p> <ul style="list-style-type: none"> • Detailed information about event automation scripts, including the times they start and stop and any output produced by the scripts, is recorded in the MWTM system event automation log file (see Viewing the Event Automation Log, page 11-21). • The MWTM event automation scripts run separately from all other MWTM processes. • If the MWTM logs more than one automated event in rapid succession, the MWTM runs each automation script sequentially, not in parallel. The MWTM spawns a new UNIX process for each script, and waits for it to complete before running the next script. • By default, the MWTM allows an event automation script to run for 300 seconds (5 minutes) before canceling the script and moving on to the next script. To change the maximum run-time for event automation scripts, see Changing Event Limits, page 9-30.
Action: Poll (available only for Trap events)	<p>Check box indicating whether MWTM should poll the associated nodes. If you:</p> <ul style="list-style-type: none"> • Want MWTM to poll the nodes, check the check box. • Do not want MWTM to poll the nodes, uncheck the check box.
Action: Send Trap	<p>Check box indicating whether the MWTM should forward the event as a trap to other systems. If you:</p> <ul style="list-style-type: none"> • Want MWTM to forward the event, check the check box. • Do not want MWTM to forward the event, uncheck the check box. This is the default setting.
Raise Alarm	<div>  <div> Caution <p>This feature is for advanced users (Cisco developers and third-party integrators).</p> </div> </div> <p>If the Raise Alarm check box is checked, then, when this event happens, an alarm appears in the Supplemental Alarms table.</p>

Field or Button	Description
Correlate	 <p>Caution This feature is for advanced users (Cisco developers and third-party integrators).</p> <p>When you check the this check box, you can then define a key in the Key field.</p>
Key	 <p>Caution This feature is for advanced users (Cisco developers and third-party integrators).</p> <p>You can define a key to correlate appropriate events. The EPM notification includes this key for use by the north-bound system. Right-click in the text field to select a key.</p>
Disable	Check box to disable this event without removing the event configuration from the <code>/opt/CSCOSgm/etc</code> file.
Errors	Error messages associated with the event. Correct all errors before deploying the new event configuration.

Forwarding Events as Traps to Other Hosts

You use the MWTM to forward MWTM events to other hosts, in the form of SNMP traps. This operation enables the MWTM to integrate with high-level event- and alarm-monitoring systems such as the Cisco Info Center (CIC). These systems can provide a single high-level view of all alarm monitoring in your network, making it easier to detect and resolve problems.

To forward MWTM events to other hosts:

- Step 1** Specify the list of SNMP servers, or hosts, to which you want the MWTM to forward traps (see [Specifying a List of SNMP Servers for Trap Forwarding, page 9-32](#)).
- Step 2** Specify the events you want to forward, using one of these procedures. To forward:
 - a. All MWTM events, click the **Send a trap for all events** radio button in the SNMP Servers Configuration window of the MWTM Event Editor. For more information, see [Specifying a List of SNMP Servers for Trap Forwarding, page 9-32](#).
 - b. Only selected events, edit the events in the MWTM Event Editor and check the **Send Trap** check box. For more information, see the description of the Send Trap field in [Configuring Trap, Status Alarm, or User Action Events, page 9-36](#).
- Step 3** (Optional) Specify new, more meaningful names for the events that you want to forward. If you do not specify a new message name for an event, the MWTM uses the default message name, MWTM. For more information, see the description of the Message Name field in [Configuring Trap, Status Alarm, or User Action Events, page 9-36](#).
- Step 4** Save your new event settings, deploy them to the MWTM server, and restart the MWTM server.



Note For more details, see the *Cisco Mobile Wireless Transport Manager 6.0 OSS Integration Guide*.

Setting Sounds for Events at an MWTM Client

You use the MWTM to create and change event sound filters for the MWTM client. Event sound filters determine the sounds that the MWTM client plays when specific events are logged. The MWTM client plays the sounds even if the Event window is not currently visible.

On Solaris and Linux systems, the root user can access the sound feature from a local or remote device. However, users other than the root user must use a local device and client, not a remote MWTM client accessed by using the xhost + UNIX command.

This section includes:

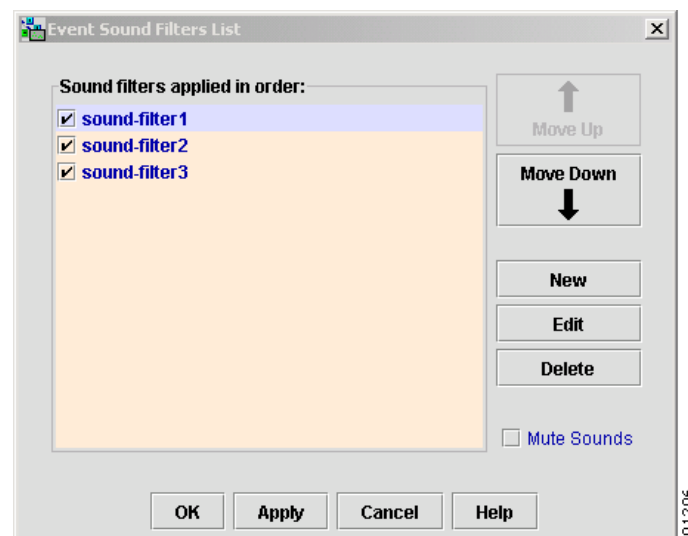
- [Listing Event Sound Filters, page 9-41](#)
- [Creating a New Event Sound Filter, page 9-43](#)
- [Adding a Sound File to the MWTM, page 9-45](#)
- [Changing an Existing Event Sound Filter, page 9-45](#)
- [Deleting an Event Sound Filter, page 9-46](#)
- [Playing and Muting Event Sounds, page 9-46](#)

Listing Event Sound Filters

You use the MWTM to change the list of event sound filters that the MWTM client applies to events, or prevent the MWTM client from playing sounds for events.

To work with the list of event sound filters, choose **Tools > Event Sounds** from the MWTM main menu. The Event Sound Filters List dialog box appears.

Figure 9-9 Event Sound Filters List Dialog



The Event Sound Filters List dialog box lists all event sound filters that have been defined.

Field or Button	Description
Sound filters applied in order	Indicates the order in which sound filters are to be applied, from top to bottom. That is, if an event matches two or more filters in the list, the top-most filter determines the sound that the MWTM client plays. This field is blank until you have created at least one new sound filter for events.
Move Up	Moves the selected event sound filter up in the Sound filters applied in order list.
Move Down	Moves the selected event sound filter down in the Sound filters applied in order list.
New	Opens the Event Sound Filters dialog box, which you use to create a new event sound filter.
Edit	Opens the Event Sound Filters dialog box, which you use to change an existing event sound filter in the Sound filters applied in order list.
Delete	Deletes the selected event sound filter from the Sound filters applied in order list.
Mute Sounds	Check box indicating whether the MWTM client should play event sounds. To: <ul style="list-style-type: none">• Play event sounds, check the check box. This is the default setting.• Not play event sounds, uncheck the check box.
OK	Applies any changes you made to the event sound filters list and closes the Event Sound Filters List dialog box. When you are satisfied with the changes you made to the event sound filters list, click OK .
Apply	Applies any changes you made to the event sound filters list without closing the Event Sound Filters List dialog box.
Cancel	Closes the Event Sound Filters List dialog box without applying any changes to the event sound filters list.
Help	Shows online help for the current window.

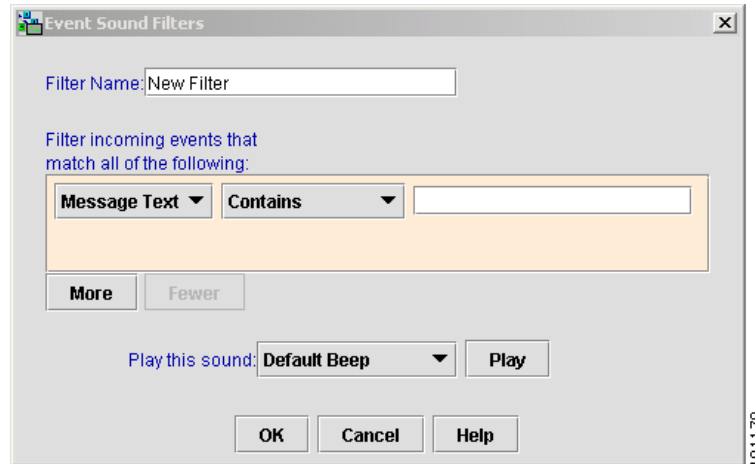
Related Topics:

- [Setting Sounds for Events at an MWTM Client, page 9-41](#)
- [Managing Events, page 9-1](#)

Creating a New Event Sound Filter

You use the MWTM to create a new event sound filter. Open the Event Sound Filters List dialog box, as described in [Listing Event Sound Filters, page 9-41](#), then click **New**. The Event Sound Filters dialog box appears.

Figure 9-10 Event Sound Filters Dialog



The Event sound filters dialog box contains:

Button or Field	Description
Filter Name	Name of the event sound filter file. Enter a name for the filter, then specify filter criteria for this event sound filter in the Event Sound Filter Criteria field.
Event Sound Filter Criteria	Table listing the filter criteria for this event sound filter. To add a criteria, select options from the drop-down list boxes: <ul style="list-style-type: none"> To filter based on message text: <ol style="list-style-type: none"> Select Message Text from the first drop-down list box. Select Contains, Equals, Does Not Contain, or Does Not Equal from the second drop-down list box. Enter the message text in the character string field. To filter based on event severity: <ol style="list-style-type: none"> Select Severity from the first drop-down list box. Select Equals or Does Not Equal from the second drop-down list box. Select a severity, such as Normal, from the third drop-down list box, the message text.

Button or Field	Description
Event Sound Filter Criteria (continued)	<ul style="list-style-type: none"> To filter based on event category: <ol style="list-style-type: none"> Select Category from the first drop-down list box. Select Equals or Does Not Equal from the second drop-down list box. Select a category, such as Status or Purge, from the third drop-down list box, the message text. To filter based on the name of the node associated with the event: <ol style="list-style-type: none"> Select Node from the first drop-down list box. Select Equals or Does Not Equal from the second drop-down list box. Select a node from the third drop-down list box. The MWTM lists all nodes that have been discovered in the drop-down list box.
More	<p>Adds one or more additional filter criteria to the event sound filter.</p> <p>To add a filter criteria to the event sound filter, click More. The MWTM adds a new criteria to the bottom of the list.</p>
Fewer	<p>Removes one or more filter criteria from the event sound filter.</p> <p>To remove a filter criteria from the event sound filter, click Fewer. The MWTM deletes the last criteria in the list.</p>
Play this sound:	<p>Drop-down list box indicating the sound to play if an event matches this event sound filter.</p> <p>The MWTM client sound files are stored in the MWTM client's <i>/sounds</i> directory. If you installed the MWTM client:</p> <ul style="list-style-type: none"> For Solaris/Linux in the default directory, <i>/opt</i>, then the sound file directory is <i>/opt/CSCOSgmClient/sounds</i>. For Windows in the default directory, <i>/Program Files</i>, then the sound file directory is <i>C:\Program Files\MWTMClient\sounds</i>. In a different directory, then the sound file directory is located in that directory. <p>To add a sound file to the MWTM, add it to the <i>/sounds</i> directory (see Adding a Sound File to the MWTM, page 9-45).</p>
Play	Plays a sample of the sound selected in the Play this sound drop-down list box.
OK	<p>Applies any changes you made to the event sound filter criteria and closes the Event Sound Filters dialog box.</p> <p>When you are satisfied with the changes you made to the event sound filters, click OK.</p>
Cancel	Closes the Event Sound Filters dialog box without applying any changes to the event sound filter criteria.
Help	Shows online help for the current window.

Related Topics:

- [Listing Event Sound Filters](#), page 9-41
- [Managing Events](#), page 9-1

Adding a Sound File to the MWTM

You can add sound files to an MWTM client. The MWTM clients can play these sound file formats:

- AIFC
- AIFF
- AU
- SND
- WAV

**Note**

WAV files encoded using MPEG Layer-3 are not supported.

The MWTM client sound files are stored in the MWTM client's */sounds* directory. If you installed the MWTM client:

- For Solaris/Linux in the default directory, */opt*, then the sound file directory is */opt/CSCOSgmClient/sounds*.
- For Windows in the default directory, */Program Files*, then the sound file directory is *C:\Program Files\MWTMClient\sounds*.
- In a different directory, then the sound file directory is located in that directory.

If for some reason the MWTM cannot play a specified sound file, the MWTM plays a default beep. For example, the MWTM cannot play a sound file if one of these conditions exists:

- The file has been moved or deleted from the */sounds* directory.
- The */sounds* directory has been deleted or cannot be found.
- Some other application is using all of the sound resources.
- No sound card is present.

Related Topics:

- [Creating a New Event Sound Filter, page 9-43](#)
- [Managing Events, page 9-1](#)

Changing an Existing Event Sound Filter

You use the MWTM to change an existing event sound filter. Open the Event Sound Filters List dialog box, as described in [Listing Event Sound Filters, page 9-41](#), select the filter in the **Sound filters applied in order** list, then click **Edit**. The MWTM shows the Event Sound Filters dialog box ([Figure 9-9](#)), populated with the selected filter's settings.

Change the settings as needed, then click **OK**. The MWTM applies your changes and closes the Event Sound Filters dialog box.

Deleting an Event Sound Filter

You use the MWTM to delete an existing event sound filter. Open the Event Sound Filters List dialog box, as described in [Listing Event Sound Filters, page 9-41](#), select the filter in the **Sound filters applied in order** list, then click **Delete**. The MWTM deletes the selected filter.

Playing and Muting Event Sounds

You use the MWTM to specify whether you want the MWTM client to play event sounds. To do so, open the Event Sound Filters List dialog box, as described in [Listing Event Sound Filters, page 9-41](#). To:

- Play event sounds, uncheck the **Mute Sounds** check box. This is the default setting.
- Not play event sounds, check the **Mute Sounds** check box.

Displaying Alarms

You use the MWTM to view a summary of all currently active alarms in your network, including the current status of the associated network object. An active alarm is a network object with this status:

- A link, signaling gateway-mated pair, or application server process that is Warning (yellow) or worse and is not Ignored.
- A linkset, signaling point, node, application server, interface, card, or backhaul that is Pending (red) or worse and is not Ignored.

To see a summary of all currently active alarms, click **Alarms** in the navigation tree left pane. The MWTM shows the Active Alarms window in the right pane (see [Figure 9-11](#)).

- Right-click **Alarms** in the navigation tree to display the right-click menu for all alarms (see [Right-Click Menu for All Alarms, page 9-49](#)).
- Right-click an alarm in the content area in the right pane to display the right-click menu for a specific alarm (see [Right-Click Menu for a Specific Alarm, page 9-49](#)).

Figure 9-11 **Active Alarms Window**

Type	Name	Status	Status Reason	Age
UMTS Interface	ATM0/0.0-aa15 layer	Down	Remote alarm state...	04 Mins
Interface	E1_17/8	Down	Interface Down	13 Mins
Interface	E1_17/7	Down	Interface Down	13 Mins
Interface	E1_17/6	Down	Interface Down	13 Mins
Interface	E1_17/5	Down	Interface Down	13 Mins
Interface	E1_17/4	Down	Interface Down	13 Mins
Interface	E1_17/3	Down	Interface Down	13 Mins
Interface	E1_17/2	Down	Interface Down	13 Mins
Interface	E1_17/1	Down	Interface Down	13 Mins
Card	XC	Failed	Card Failed	13 Mins
Interface	E1_2/13	Down	Interface Down	13 Mins
Interface	E1_2/12	Down	Interface Down	13 Mins
Interface	E1_2/11	Down	Interface Down	13 Mins
Interface	E1_2/10	Down	Interface Down	13 Mins
Interface	E1_2/9	Down	Interface Down	13 Mins
Interface	E1_2/8	Down	Interface Down	13 Mins
Interface	E1_2/7	Down	Interface Down	13 Mins
Interface	E1_2/6	Down	Interface Down	13 Mins
Interface	E1_2/5	Down	Interface Down	13 Mins
Interface	E1_2/4	Down	Interface Down	13 Mins
Interface	E1_2/3	Down	Interface Down	13 Mins
Interface	E1_2/2	Down	Interface Down	13 Mins
Interface	E1_2/1	Down	Interface Down	13 Mins

The Active Alarms window provides basic information about all currently active alarms in your network, that are not excluded from your current view. The MWTM updates the information in the window at least once every minute.

To see the tooltip for each column in the table, place the cursor over a column heading.

If a cell is too small to show all of its text, place the cursor over the cell to see the complete text in a tooltip.

You can resize each column, or sort the table based on the information in one of the columns. By default, this table is sorted by Age, with the most recent alarms at the top, and the MWTM shows all of the columns in the table except Last Status Change.

- To display hidden columns, right-click in the table heading and check the check boxes for the columns you want to display.
- To hide columns, right-click in the table heading and uncheck the check boxes for the columns you want to hide.

For more information about resizing, sorting, displaying, or hiding columns, see [Navigating Table Columns, page 5-23](#).

The Active Alarms window contains:

Column	Description
Type	Type of network object associated with the selected alarm. To see all higher-level alarms associated with the network object, select the turner beside the object. The MWTM shows the higher-level alarms underneath the selected alarm. For example, if you select the turner beside a link, the MWTM shows the alarms for the linkset, signaling point, and node associated with that link.
Name	Name of the network object associated with the selected alarm.
Status	Current status of the network object associated with the selected alarm. Possible values include: <ul style="list-style-type: none"> • None: Black • Unknown: Red • Unavailable: Red • Inactive: Red • Failed: Red • Down: Red • Blocked: Red • Pending: Red • Warning: Yellow • Shutdown: Blue • Inhibited: Blue

Column	Description
Status (continued)	<ul style="list-style-type: none"> • InhibitLoc: Blue • InhibitRem: Blue • Discovering: Cyan • Polling: Cyan • Waiting: Gray • Unmanaged: Gray • Active: Green <p>For detailed definitions of each status for each type of network object, see Status Definitions, page E-1.</p>
Status Reason	<p>Reason for the current status of the network object associated with the selected alarm.</p> <p>For a full list of possible reasons, see the <i>stateReasons.html</i> file. If you installed the MWTM in:</p> <ul style="list-style-type: none"> • The default directory, <i>/opt</i>, then the file is located at <i>/opt/CSCOs/gm/apache/share/htdocs/eventHelp</i> directory. • In a different directory, then the help directory and file are located in that directory. <p>If the cell is too small to show all of the status reason, place the cursor over the cell to see the full status reason in a tooltip help popup.</p> <p>The status reasons are listed in order of decreasing magnitude. If two or more reasons apply, the reason of greatest magnitude appears.</p> <p>If the status reason is Unsupported Configuration, correct the configuration and enter the mwtm cleandiscover command to delete all current network data and begin a discovery of the network. If the status reason remains Unsupported Configuration, enter the mwtm clean command to restore the MWTM server to a state that would exist after a new installation of the MWTM, excluding the log files, which the MWTM retains. To also remove the log files, enter the mwtm cleanall command. For more information on the use of these commands, see Command Reference, page B-1.</p>
Last Status Change	Date and time that the status of the network object associated with the selected alarm last changed.
Age	Age of the selected alarm, in days, hours, and minutes.

Right-Click Menu for All Alarms

To see the right-click menu for all active alarms, select **Alarms** in the navigation tree and right-click the mouse button.

Menu Command	Description
Show In New Window	Opens the Active Alarms window in a new window.
Back > <i>List of Windows</i>	Navigates back to a window viewed in this session. The MWTM maintains a list of up to 10 Back windows.
Forward > <i>List of Windows</i>	Navigates forward to a window viewed in this session. The MWTM maintains a list of up to 10 Forward windows.

Right-Click Menu for a Specific Alarm

The active alarms table provides a subset of the MWTM main menu as a right-click menu. To see this menu, select an alarm and right-click the mouse button.

The alarm right-click menu provides the same options as the right-click menu for the associated network object, plus these additional options:

Menu Command	Description
Expand All	Shows all higher-level alarms associated with all network objects in the active alarms table.
Collapse All	Does not display higher-level alarms in the active alarms table.
Edit Notes	Opens the Edit Event dialog box for the selected event.
Clear Event Icon	Deletes the event icon from MWTM displays for the selected object, for this MWTM client only. The actual events are not deleted from the MWTM, only the event icon for the selected object for this MWTM client. This option is grayed-out if the selected object has no associated event icon.
Delete	Deletes the selected alarm.
Go To > <i>Object</i>	Shows the window for the object associated with the selected event. If no object is associated with the event, this option is not visible.
Back > <i>List of Windows</i>	Navigates back to a window viewed in this session. The MWTM maintains a list of up to 10 Back windows.
Forward > <i>List of Windows</i>	Navigates forward to a window viewed in this session. The MWTM maintains a list of up to 10 Forward windows.
View > Status Contributors	Displays the Status Contributors pane for the selected object. Objects in this pane contribute to the status of the selected object.
View > Details	Displays the Details pane for the selected object.
View > Notes	Displays the Notes pane for the selected object. If there are no notes associated with the selected object, this option is grayed-out.

Menu Command	Description
View > Troubleshooting	Displays the Troubleshooting pane for the selected object. If you have implemented MWTM User-Based Access, this option is available to users with authentication level Network Operator (level 3) and higher.
View > Recent Events	Displays the Recent Events pane for the selected object and any associated network objects.
Archived Events > Status Changes	Displays the archived status changes in a web browser.
Archived Events > SNMP Traps	Displays the archived SNMP traps in a web browser.
Archived Events > Status Changes and SNMP Traps	Displays both the archived status changes and archived SNMP traps in a web browser.
Ignore	Ignores the selected object at the next polling cycle. If you have implemented MWTM User-Based Access, this option is available to users with authentication level Power User (level 2) and higher.

**Caution**

The alarms visible in the active alarms table are the actual network objects in the MWTM. Options you select in the right-click menu affect the object in the MWTM. For example, if you delete a node in the active alarms table, you delete that node from the MWTM database.