



## CHAPTER 5

# Service Inventory—Device Console

From the Home window of Cisco IP Solution Center (ISC), which you receive upon logging in, click the **Service Inventory** tab or area in the data pane of the window, and you receive a window as shown in [Figure 5-1](#), “[Service Inventory Selections](#).”

**Figure 5-1**      *Service Inventory Selections*



Click on **Device Console** and you proceed to [Figure 5-2](#), “[Example of Device Console Selections](#)” and can choose one of the device related operations.

## Device Console

**Device Console** is the starting point for many operations. To navigate through **Device Console**, follow these steps:

- Step 1** Choose **Service Inventory > Device Console** and you receive a window as shown in the example in [Figure 5-2](#), “[Example of Device Console Selections](#).”



**Note**

The radio button last selected will be the one shown in [Figure 5-2](#).

**Figure 5-2 Example of Device Console Selections**

**Step 2** To select one of the operations, click the radio button for one of the following selections and then click **Next**:

**Note**

All operations apply only to Live mode, *not* ECHO mode.

- [Download Commands, page 5-2](#)—Download operation commands and configlets. The **Select Operation Method** selections of **Simplified** and **Advanced (via wizard)** are only available for **Download Commands** and are explained in that section.
- [Download Template, page 5-3](#)—Downloads template configlets to the specified devices.
- [Device Configuration Manager, page 5-8](#)—Displays different versions of configuration files created on a repository per timestamp and writes to running-configuration or start-up configuration.
- [EXEC Commands, page 5-10](#)—Allows you to send to target devices any Cisco IOS commands that can be executed in enable mode.
- [Reload, page 5-13](#)—Remotely reloads devices.

## Download Commands

To download commands, follow these steps:

- Step 1** Choose **Service Inventory > Device Console > Download Commands**.
- Step 2** The **Select Operation Method** default is **Simplified**, which indicates that in a single window you have the options for selecting the Devices, Device Groups, and Operation Commands. You do not need to multi-click. In a single window you can submit the required parameters to complete the task. **Advanced (via wizard)** indicates you must go to multiple windows to achieve the task. In this method, you select Device, click **Next**, select Device Groups, click **Next**, select Operation Command, and then the summary.
- Step 3** Click **Next**. A window as shown in [Figure 5-3, “Device Console—Download Commands: Select Devices,”](#) appears.

**Figure 5-3 Device Console—Download Commands: Select Devices**

Device Console - Download Commands

Devices: Select/Deselect

Groups: Select/Deselect

Operation Commands: Load File

Options:

☐ Upload Config After Download

☐ Retrieve device attributes

OK Cancel

Note: \* - Required Field

129042

- Step 4** In the **Devices** row, click **Select/Deselect**. In the new window, check the check box for each device you want. Uncheck a check box if you do not want this device. Then click **Select**. [Figure 5-3](#) then reappears with the selected devices in the **Devices** row.
- Step 5** In the **Groups** row, click **Select/Deselect**. In the next window, check the check box for each group you want. Uncheck a check box if you do not want this group. Then click **Select**. The selected groups appear in the **Groups** row.
- Step 6** In the **Operation Commands** field, enter the commands you want to download or click **Load File** to select a set of commands to place in the **Operation Commands** field.
- Step 7** If you leave the **Upload Config After Download** check box unchecked, you do *not* upload the configuration file after the download.
- Step 8** If you leave the **Retrieve device attributes** check box unchecked, you do not retrieve any device attributes. If you check the **Retrieve device attributes** check box, after the template is downloaded, SNMP is used to retrieve interface information and issue additional **show** commands, such as **show version**.
- Step 9** Click **OK** to submit the download and you receive a window with the **Device Console Operation Result** and in the bottom left corner a **Status**. You can click **Download** or **Done**.
- Step 10** When you click **Download**, you return to [Step 6](#) to download additional commands on the selected devices.
- Step 11** When you click **Done**, you return to [Figure 5-2](#).

## Download Template



### Note

Multiple datafiles belonging to different templates cannot be downloaded through the device console.

To download a template, follow these steps:

- Step 1** Choose **Service Inventory > Device Console > Download Template** from Figure 5-2 and click **Next**. A window as shown in Figure 5-4, “Device Console—Download Template: Select Devices,” appears.

**Figure 5-4** Device Console—Download Template: Select Devices

- Step 2** Continue with Step 3 if you want to add devices; proceed to Step 8 to delete devices; or click **Next** to proceed to Step 10 for **3. Select Device Groups**.
- Step 3** Click **Add**, as shown in Figure 5-4, to **2. Select Devices**.
- Step 4** From the resulting window, as shown in Figure 5-5, “Device Selection,” check the check box(es) for each device you want to select. Then click **Select**.

**Figure 5-5 Device Selection**

Showing 1 - 8 of 8 records

#	<input type="checkbox"/>	Device Name	Management IP Address	Type	Parent Device Name
1.	<input type="checkbox"/>	pe1		Cisco IOS Device	
2.	<input type="checkbox"/>	pe3		Cisco IOS Device	
3.	<input type="checkbox"/>	sw2		Cisco IOS Device	
4.	<input type="checkbox"/>	sw8		Cisco IOS Device	
5.	<input type="checkbox"/>	sw4		Cisco IOS Device	
6.	<input type="checkbox"/>	ce3		Cisco IOS Device	
7.	<input type="checkbox"/>	ce8		Cisco IOS Device	
8.	<input type="checkbox"/>	ce13		Cisco IOS Device	

Rows per page: 10 Go to page: 1 of 1 Go

Select Cancel

- Step 5** You return to [Figure 5-4](#) with the added devices.
- Step 6** For each device, you can click the added **Clear** button to clear the **Upload to Customer/Site** column to reflect **none selected**, or you can click the added **Select** button and a new window allows you to **Create Customer**, **Create Site**, **Select**, or **Cancel**. When you click **Select** in this new window, you return to [Figure 5-4](#) with the added customer or site.
- Step 7** You can repeat [Step 3](#) to [Step 6](#) to **add** more devices, you can delete devices, as explained in [Step 8](#), or you can proceed by going to [Step 9](#).
- Step 8** To delete devices, check the check box(es) for the devices you want to delete and then click **Delete**. Select carefully, because there is no chance to confirm this deletion.
- Step 9** When you have all the devices you want, click **Next**. You proceed to **3. Select Device Groups**, starting in [Step 10](#).
- Step 10** Continue with [Step 11](#) if you want to add device groups; proceed to [Step 14](#) to delete device groups; or click **Next** to proceed to [Step 16](#) for **4. Enter Download Commands**.
- Step 11** Click **Add**, as shown in [Figure 5-6](#), to **3. Select Device Groups**. Adding Device Groups is optional.

**Figure 5-6 Device Group Selection**

Showing 0 of 0 records

#	<input type="checkbox"/>	Device Group Name	Description
---	--------------------------	-------------------	-------------

Rows per page: 10 Go to page: 1 of 1 Go

Add Delete

- Step 12** From the resulting window, as shown in [Figure 5-7](#), “Group Association,” check the check box(es) for each device group you want to select. Then click **Select**.

**Figure 5-7 Group Association**

Groups Associated with **Device Console**

Show Device Groups with  matching

Showing 1 - 2 of 2 records

#	Device Group Name	Description
1.	<input type="checkbox"/> Device-Group-1	
2.	<input type="checkbox"/> Device-Group-2	

Rows per page:  Go to page:  of 1

- Step 13** You return to [Figure 5-6](#) with the added device groups. You can repeat [Step 11](#) to [Step 12](#) to **add** more device groups, you can delete device groups, as explained in [Step 14](#), or you can proceed by going to [Step 15](#).
- Step 14** To delete device groups, check the check box(es) for the devices you want to delete and then click **Delete**. Select carefully, because there is no chance to confirm this deletion.
- Step 15** When you have all the device groups you want, click **Next**. You proceed to **4. Select Download Template**, starting in [Step 16](#).
- Step 16** For **4. Select Download Template**, the resulting window is shown in [Figure 5-8](#), “Select Download Template.”

**Figure 5-8 Select Download Template**

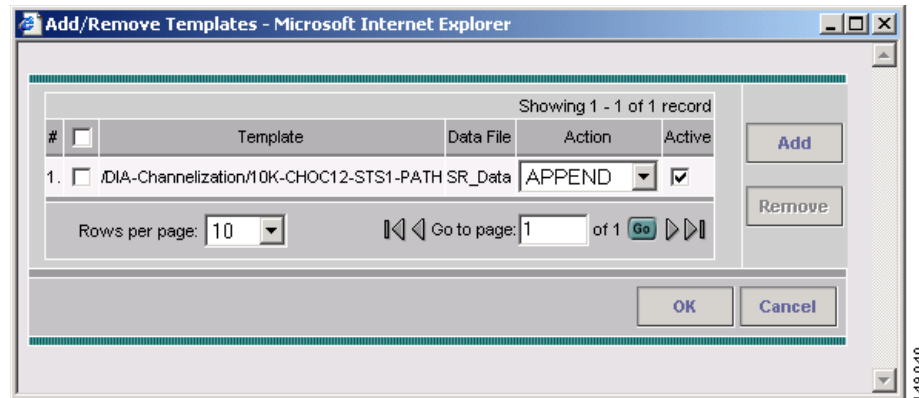
Showing 0 of 0 records

#	Template	Data File	Action
---	----------	-----------	--------

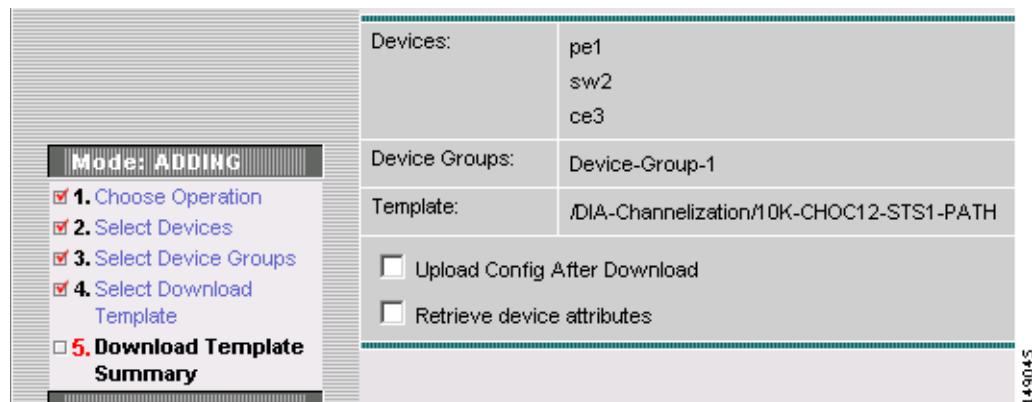
Rows per page:  Go to page:  of 1

- Step 17** In [Figure 5-8](#), you can click the **Select** button.
- Step 18** A window as shown in [Figure 5-9](#), “Add/Remove Templates,” appears. Click **Add** to add templates or **Remove** to remove templates. When you have the templates you want, click **OK**.

When you click **Add** you get a Template Datafile Chooser window with the template choices in the tree. Click **+** to open the folders and subfolders in the tree, until you get the property you want to choose. Click on that property and it is added to your list. Repeat this until all the templates you want are in your list. In each added property, you can click **View** and you receive the configlet for that data file. To return, click **OK**. In [Figure 5-9](#), check the check box(es) for the template(s) you want. In each template row, click the **Action** drop-down list and choose **APPEND** or **PREPEND** to add information after or before, respectively; check or uncheck the **Active** check box; and then click **OK**.

**Figure 5-9 Add/Remove Templates**

- Step 19** You return to [Figure 5-8](#) with the updated information.
- Step 20** Click **Next** and you proceed to **5. Download Template Summary**, as explained in [Step 21](#).
- Step 21** For **5. Download Commands Summary**, a window as shown in [Figure 5-10](#), “**Download Template Summary**,” appears.

**Figure 5-10 Download Template Summary**

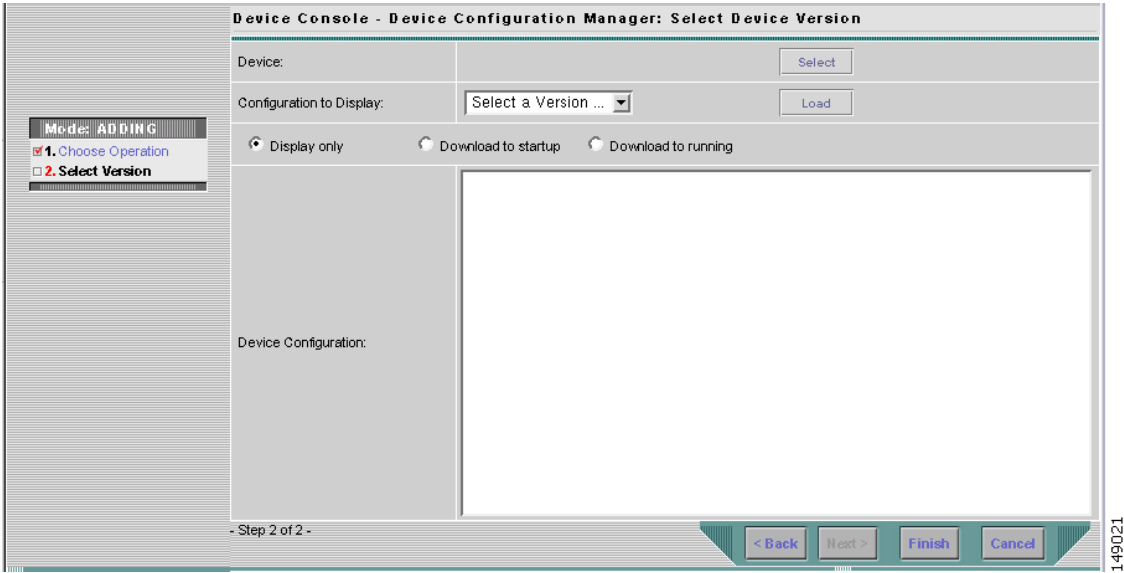
- Step 22** In [Figure 5-10](#), if you leave the **Upload Config After Download** check box unchecked, you do *not* upload the configuration file after the download. If you check the **Upload Config After Download** check box, you upload the new configuration file after you download the templates in [Step 18](#). If you leave the **Retrieve device attributes** check box unchecked, you do not retrieve any device attributes. If you check the **Retrieve device attributes** check box, after the template is downloaded, SNMP is used to retrieve interface information and issue additional **show** commands, such as **show version**.
- Step 23** Click **Back** until you correct any information you want to change or click **Finish** to submit the download and you receive a window with the **Download Template Results** and in the bottom left corner a **Status** with a green check mark for **Succeeded**.
- Step 24** Click **Done** and you return to [Figure 5-2](#) on page 5-2.

# Device Configuration Manager

To display the configuration, download the configuration to the startup configuration on the device, or download the configuration to the running configuration on the device, follow these steps:

- Step 1** Choose **Service Inventory > Device Console > Device Configuration Manager** and from [Figure 5-2](#) click **Next**. A window as shown in [Figure 5-11](#), “**Device Configuration Manager**,” appears.

**Figure 5-11** Device Configuration Manager



- Step 2** In the **Device** row, click **Select** and a window as shown in [Figure 5-12](#), “**Device Selection**,” appears.



**Figure 5-12 Device Selection**

Showing 1 - 8 of 8 records

#		Device Name	Management IP Address	Type	Parent Device Name
1.	<input type="radio"/>	pe1		Cisco IOS Device	
2.	<input type="radio"/>	pe3		Cisco IOS Device	
3.	<input type="radio"/>	sw2		Cisco IOS Device	
4.	<input type="radio"/>	sw8		Cisco IOS Device	
5.	<input type="radio"/>	sw4		Cisco IOS Device	
6.	<input type="radio"/>	ce3		Cisco IOS Device	
7.	<input type="radio"/>	ce8		Cisco IOS Device	
8.	<input type="radio"/>	ce13		Cisco IOS Device	

Rows per page: 10 Go to page: 1 of 1

Select Cancel

- Step 3** From the devices listed, click the radio button for the device you want to select. Then click **Select**.
- Step 4** You return to [Figure 5-11](#) with the added device. You can repeat [Step 2](#) to [Step 3](#) to change the device.
- Step 5** When you have selected the device you want, go to the **Configuration to Display** row and click the **Select a Version...** drop-down list. Click the version you want and then click **Load** to load that configuration file.
- Step 6** Click one of the following radio buttons or keep the default:
- **Display only**—The configuration file can only be viewed.
  - **Download to startup**—The configuration file is downloaded to the start up configuration of the selected router.



**Note** For **Download to startup**, the Device Access Protocol (defined in device creation) must be either **ftp** or **tftp**. If this is not the case, the Device Configuration Manager Results window appears and indicates that you must set up either **ftp** or **tftp**. Dynamic Component Properties Library (DCPL) properties for DCS for both FTP and TFTP are specified in [Appendix C, “Property Settings”](#).

- **Download to running** The configuration file is downloaded to the router’s running configuration file.



**Note** When the DCPL property **copy-running-to-startup** in the **GTL/ios** folder is set to the default of **true**, the router’s running configuration file is also copied to the start up configuration.

- Step 7** Click **Finish**. If in [Step 6](#) you chose **Display only**, you automatically return to [Figure 5-2 on page 5-2](#). If in [Step 6](#) you clicked **Download to startup** or **Download to running**, you get a Device Configuration Manager Results window. In the **Status** box, you get a green check mark for **Succeeded** or a red **Failed** status and you must click **Done** to return to [Figure 5-2 on page 5-2](#).

## EXEC Commands

**EXEC Commands** allows you to send to target devices any Cisco IOS commands that can be executed in enable mode. You can only view the router information. You cannot edit or delete the information.

To execute **EXEC Commands**, follow these steps:

- Step 1** Choose **Service Inventory > Device Console > EXEC Commands** and in [Figure 5-2](#) click **Next**. A window as shown in [Figure 5-13](#), “**Device Console—EXEC Commands: Select Devices**,” appears.

**Figure 5-13** *Device Console—EXEC Commands: Select Devices*

Device Console - EXEC Commands: Select Devices

Show Devices with Device Name matching \* Find

Showing 0 of 0 records

#	Device Name	Management IP Address	Type
Showing 0 of 0 records			

Rows per page: 10 Go to page: 1 of 1

Add Delete

- Step 2 of 5 -

< Back Next > Finish Cancel

- Step 2** Continue with [Step 3](#) if you want to add devices; proceed to [Step 6](#) to delete devices; or click **Next** to proceed to [Step 8](#) for **3. Select Device Groups**.
- Step 3** Click **Add**, as shown in [Figure 5-13](#), to **2. Select Devices**.
- Step 4** From the resulting window, as shown in [Figure 5-14](#), “**Device Selection**,” check the check box(es) for each device you want to select. Then click **Select**.

**Figure 5-14**      **Device Selection**

#	<input type="checkbox"/>	Device Name	Management IP Address	Type	Parent Device Name
1.	<input type="checkbox"/>	pe1		Cisco IOS Device	
2.	<input type="checkbox"/>	pe3		Cisco IOS Device	
3.	<input type="checkbox"/>	sw2		Cisco IOS Device	
4.	<input type="checkbox"/>	sw8		Cisco IOS Device	
5.	<input type="checkbox"/>	sw4		Cisco IOS Device	
6.	<input type="checkbox"/>	ce3		Cisco IOS Device	
7.	<input type="checkbox"/>	ce8		Cisco IOS Device	
8.	<input type="checkbox"/>	ce13		Cisco IOS Device	

Rows per page: 10      Go to page: 1 of 1      Go      Select      Cancel

- Step 5** You return to [Figure 5-13](#) with the added devices. You can repeat [Step 3](#) to [Step 4](#) to **add** more devices, you can delete devices, as explained in [Step 6](#), or you can proceed by going to [Step 7](#).
- Step 6** To delete devices, check the check box(es) for the devices you want to delete and then click **Delete** in [Figure 5-13](#). Select carefully, because there is no chance to confirm this deletion.
- Step 7** When you have all the devices you want, click **Next**. You proceed to **3. Select Device Groups**, starting in [Step 8](#).
- Step 8** Continue with [Step 9](#) if you want to add device groups; proceed to [Step 12](#) to delete device groups; or click **Next** to proceed to [Step 14](#) for **4. Enter EXEC Commands**.
- Step 9** Click **Add**, as shown in [Figure 5-15](#), to **3. Select Device Groups**.

**Figure 5-15**      **Device Group Selection**

Device Console - EXEC Commands: Select Device Groups

Mode: ADDING

- ☒ 1. Choose Operation
- ☒ 2. Select Devices
- ☒ 3. Select Device Groups
- ☐ 4. Enter EXEC Command
- ☐ 5. EXEC Commands
- Summary

ShowDevice Groups with Device Group Name matching \* Find

Showing 0 of 0 records

#	<input type="checkbox"/>	Device Group Name	Description
---	--------------------------	-------------------	-------------

Rows per page: 10      Go to page: 1 of 1      Go      Add      Delete

- Step 3 of 5 -      < Back      Next >      Finish      Cancel

- Step 10** From the resulting window, as shown in [Figure 5-16](#), “Group Association,” check the check box(es) for each device group you want to select. Then click **Select**.

**Figure 5-16** Group Association

#	Device Group Name	Description
1.	Device-Group-1	
2.	Device-Group-2	

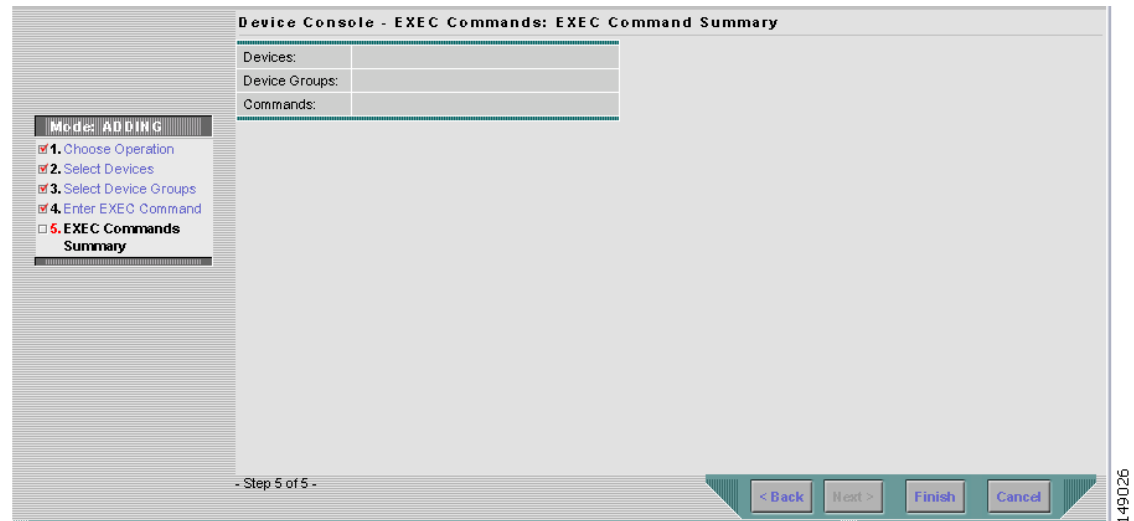
- Step 11** You return to [Figure 5-15](#) with the added device groups. You can repeat [Step 9](#) to [Step 10](#) to **add** more device groups, you can delete device groups, as explained in [Step 12](#), or you can proceed by going to [Step 13](#).
- Step 12** To delete device groups, check the check box(es) for the devices you want to delete and then click **Delete**. Select carefully, because there is no chance to confirm this deletion.
- Step 13** When you have all the device groups you want, click **Next**. You proceed to **4. Enter EXEC Commands**, starting in [Step 14](#).
- Step 14** For **4. Enter EXEC Commands**, the resulting window is shown in [Figure 5-17](#), “Operation Commands.”

**Figure 5-17** Operation Commands

- Step 15** In [Figure 5-17](#), you can click the **Browse** button to input an existing file with Cisco IOS configuration commands. Then click the **Load File** button to put the file’s information in the **Commands** field. Otherwise, you can enter the Cisco IOS configuration commands directly in the **Commands** field.

- Step 16** Click **Next** and you proceed to **5. EXEC Commands Summary**, as explained in [Step 17](#).
- Step 17** For **5. EXEC Commands Summary**, a window as shown in [Figure 5-18](#), “EXEC Commands Summary,” appears.

**Figure 5-18 EXEC Commands Summary**



- Step 18** Click **Back** until you correct any information you want to change or click **Finish** to retrieve the information from the router. You then receive a window with the **EXEC Commands Results** and a **Status** with a green check mark for **Succeeded**. You can click **EXEC** or **Done**.
- Step 19** When you click **EXEC**, you return to [Step 14](#) to enter additional commands on the selected devices.
- Step 20** When you click **Done**, you return to [Figure 5-2 on page 5-2](#).

## Reload

To reload (reboot) the router, follow these steps:

- Step 1** Choose **Service Inventory > Device Console > Reload** and from [Figure 5-2](#) click **Next**. A window as shown in [Figure 5-19](#), “Device Console—Reload: Select Devices,” appears.

**Figure 5-19**     **Device Console—Reload: Select Devices**

**Step 2** Continue with [Step 3](#) if you want to add devices; proceed to [Step 6](#) to delete devices; or click **Next** to proceed to [Step 8](#) for **3. Select Device Groups**.

**Step 3** Click **Add**, as shown in [Figure 5-19](#), to **2. Select Devices**.

**Step 4** From the resulting window, as shown in [Figure 5-20](#), “**Device Selection**,” check the check box(es) for each device you want to select. Then click **Select**.

**Figure 5-20**     **Device Selection**

#		Device Name	Management IP Address	Type	Parent Device Name
1.	<input type="checkbox"/>	pe1		Cisco IOS Device	
2.	<input type="checkbox"/>	pe3		Cisco IOS Device	
3.	<input type="checkbox"/>	sw2		Cisco IOS Device	
4.	<input type="checkbox"/>	sw3		Cisco IOS Device	
5.	<input type="checkbox"/>	sw4		Cisco IOS Device	
6.	<input type="checkbox"/>	ce3		Cisco IOS Device	
7.	<input type="checkbox"/>	ce8		Cisco IOS Device	
8.	<input type="checkbox"/>	ce13		Cisco IOS Device	

**Step 5** You return to [Figure 5-19](#) with the added devices. Repeat [Step 3](#) to [Step 4](#) to **add** more devices; delete devices, as explained in [Step 6](#); or proceed by going to [Step 7](#).

**Step 6** To delete devices, check the check box(es) for the devices you want to delete and then click **Delete**. Select carefully, because there is no chance to confirm this deletion.

- Step 7** When you have all the devices you want, click **Next**. You proceed to **3. Select Device Groups**, starting in [Step 8](#).
- Step 8** Continue with [Step 9](#) if you want to add device groups; proceed to [Step 12](#) to delete device groups; or click **Next** to proceed to [Step 14](#) for **4. Reload Devices Summary**.
- Step 9** Click **Add**, as shown in [Figure 5-21](#), to **3. Select Device Groups**.

**Figure 5-21** Device Group Selection

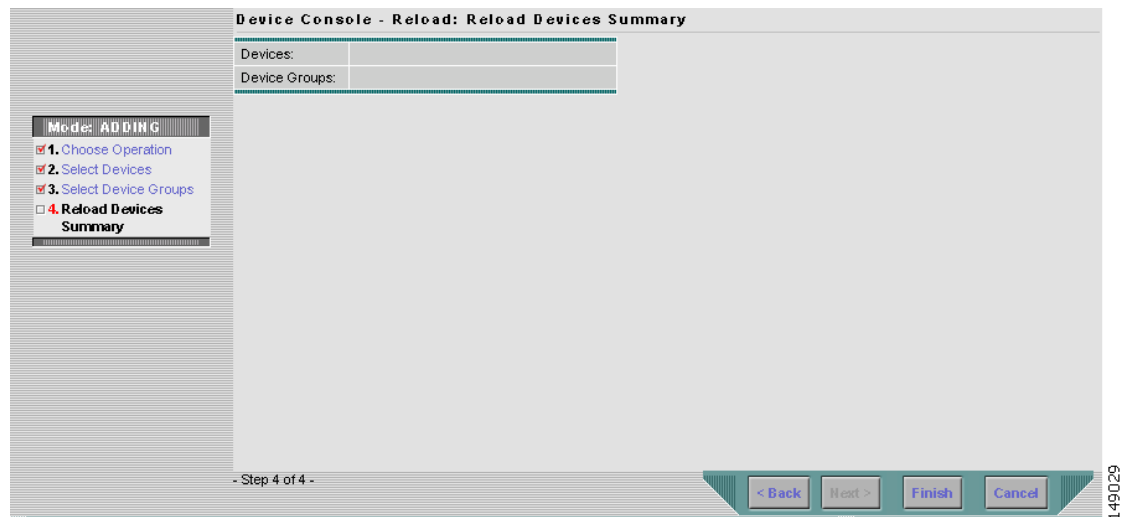
- Step 10** From the resulting window, as shown in [Figure 5-22](#), “**Group Association**,” check the check box(es) for each device group you want to select. Then click **Select**.

**Figure 5-22** Group Association

- Step 11** You return to [Figure 5-21](#) with the added device groups. Repeat [Step 9](#) to [Step 10](#) to **add** more device groups; delete device groups, as explained in [Step 12](#); or proceed by going to [Step 14](#).
- Step 12** To delete device groups, check the check box(es) for the devices you want to delete in [Figure 5-21](#) and then click **Delete**. Select carefully, because there is no chance to confirm this deletion.
- Step 13** When you have all the device groups you want, click **Next**. You proceed to **4. Reload Devices Summary**, starting in [Step 14](#).

**Step 14** For **4. Reload Devices Summary**, a window as shown in [Figure 5-23](#), “Reload Summary,” appears.

**Figure 5-23** *Reload Summary*



**Step 15** Click **Back** until you correct any information you want to change or click **Finish** to submit the reload and you receive a window with the **Reload Results** and a **Status** with a green check mark for **Succeeded**.

**Step 16** Click **Finish** and you return to [Figure 5-2 on page 5-2](#).