



Getting Started with Cisco ANA Manage

About this chapter:

This chapter describes the Cisco ANA Manage working environment and how to access Cisco ANA Manage tools and commands. It also provides instructions for launching and overviews operating the Cisco ANA Manage application-using menu and toolbar options.

The Cisco ANA Manage window provides access to all of Cisco ANA Manage's functionality.

[Starting Cisco ANA Manage](#), describes how to open the Cisco ANA Manage window.

[The Cisco ANA Manage Window](#), briefly describes the Cisco ANA Manage window, including the *Tree* pane and *Workspace*.

[Cisco ANA Manage Window, Menus and Toolbar](#), provides a detailed description of the Cisco ANA information displayed in the Cisco ANA Manage window, the menus, and toolbars.

[Logging Out](#), describes how to log out of Cisco ANA Manage.

Starting Cisco ANA Manage

Cisco ANA Manage is password protected to ensure security, and is only available to users with Administrator privileges. Before you start working with Cisco ANA Manage, make sure you know the user name, password and the Cisco ANA Gateway IP address or host name that you require.



Note

If a user does not login to the Cisco ANA Manage, NetworkVision or EventVision applications during a specified period of time (the default is one month) the user's account will be locked automatically. The default period can be changed in the Cisco ANA Registry. The period of time is measured from the time the user last logged out of any of the Cisco ANA Client applications. For information about unlocking a user, see the [General User's Rights](#) section.

To start Cisco ANA Manage:

- Step 1** From the *Start* menu, select the **Programs** folder, then **Cisco ANA/Cisco ANA Manage**. The Cisco ANA Manage - Login dialog box is displayed.

It is recommended that the administrator change the user name and login password after logging in for the first time.

The last four Cisco ANA Gateways to which the user logged in successfully are displayed in the **Host** dropdown list. The list is displayed in chronological order with the most recent Cisco ANA Gateway displayed at the top of the list.

- Step 2** Enter the required Cisco ANA Gateway's information in the **Host** field, as an IP address or host name, or
Select a Cisco ANA Gateway from the **Host** dropdown list.



Note The Cisco ANA Gateway IP address or host name that was used when you last logged in is automatically displayed at the top of the **Host** dropdown list.



Note Make sure that you use the leading IP address (the IP on which the Cisco ANA Gateway was configured) when logging in to the system.

- Step 3** Click **OK**. The Cisco ANA Manage window is displayed. The user name and host information is displayed in the Cisco ANA Manage window heading.

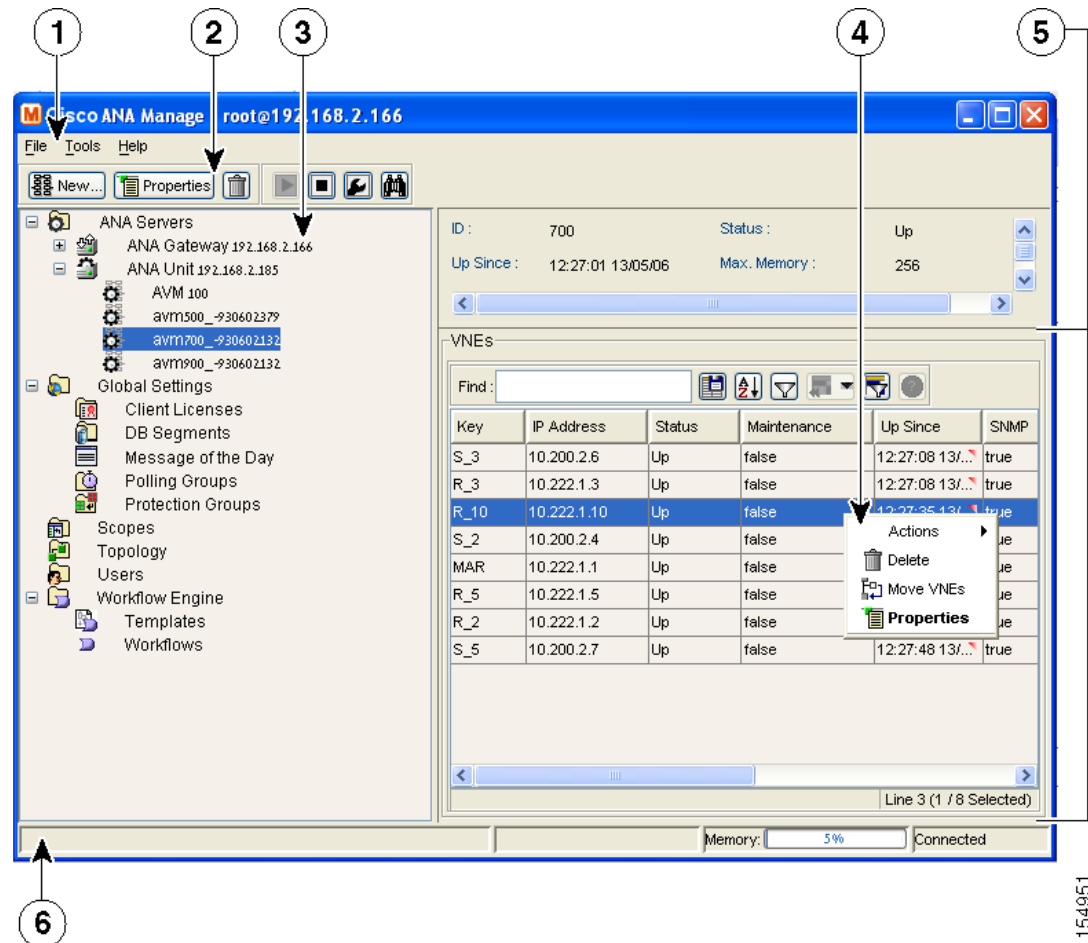


Note Some of the *Workspaces* in the Cisco ANA Manage window may appear empty when the application is opened for the first time.

The Cisco ANA Manage Window

The Cisco ANA Manage window is displayed below.

Figure 2-1 Cisco ANA Manage Window



1	Menu bar
2	Toolbar
3	Tree pane
4	Shortcut menu
5	Workspace
6	Status bar

The Cisco ANA Manage window is divided into areas or panes, as follows:

- The *Tree* pane, see the [Cisco ANA Manage Tree Pane](#) section.
- The *Workspace*, see the [Cisco ANA Manage Window Workspace](#) section.
- The *Status Bar*, displays the memory usage of the application process and connection status.

Dragging the borders of the Cisco ANA Manage window adjusts the size of each area. The two areas are correlated; this means that selecting an option in the *Tree* pane affects the information displayed in the *Workspace*.

Cisco ANA Manage Tree Pane

The *Tree* pane displays a tree-and-branch representation of the Cisco ANA Manage folders. The branches can be expanded and collapsed in order to display and hide information as needed. An example of the *Tree* pane is displayed above.

Cisco ANA Manage enables the user to manage and maintain information in the Cisco ANA using the following branches in the Cisco ANA Manage window:

- **ANA Servers**—Enables the administrator to manage information relating to the Cisco ANA Gateway, and Cisco ANA Units, including the AVMs and the VNEs in the Cisco ANA. This includes viewing a list of Cisco ANA Units, adding, editing and removing AVMs and VNEs, viewing VNE and AVM properties, starting and stopping AVMs and VNEs, and moving VNEs to maintenance mode. The *ANA Servers* branch includes the *ANA Gateway* and *AVM* sub-branches. For more information about the *ANA Servers* branch, see the [ANA Servers Branch](#) section.
- **Global Settings**—The *Global Settings* branch includes the *Client Licenses*, *DB segments*, *Message of the Day*, *Polling Groups* and *Protection Groups* sub-branches. The *Global Settings* branch enables the administrator to:
 - Install and manage Cisco ANA Client licenses.
 - Enables the administrator to view a table describing the storage allocated for all the database segments. For more information about the *DB Segments* branch, see the [DB Segments Branch](#) section.
 - Manage the service disclaimer (message of the day). For more information about the *Service Disclaimer Message of the Day*, see the [Managing Client Licenses](#) section.
 - Manage the polling groups to be used by a group of devices. The administrator can define a few polling groups, and the devices will then be polled according to the polling group. Every polling group has a different set of polling intervals. For more information about the *Polling Groups* branch, see the [Managing Polling Groups](#) section.
 - Manage and change the default setup of the Cisco ANA Units by customizing protection groups (clusters) and then assigning Cisco ANA Units to these protection groups. For more information about the *Protection Groups* branch, see the [Managing Protection Groups](#) section.




For more information about the *Global Settings* branch, see the [Global Settings Branch](#) section.

- **Scopes**—Enables the administrator to group a collection of managed Network Elements together in order to enable the user to view and/or manage the Network Elements based on the user's role. For more information about the *Scopes* branch, see the [Scopes Branch](#) section.
- **Topology**—Enables the administrator to manage topology-related parameters, namely, the static links between the devices. For more information about the *Topology* branch, see the [Topology Branch](#) section.
- **Users**—Enables the administrator to define and manage user accounts. For more information about the *Users* branch, see the [Users Branch](#) section.
- **Workflow Engine**—Enables the administrator to manage workflow templates and running workflows in runtime. For more information about the *Workflow Engine* branch, see the [Workflow Engine Branch](#) section.

Clicking on a branch in the *Tree* pane enables the user to view information relating to the selected branch in the *Workspace*. Right-clicking on a branch in the *Tree* pane, opens a shortcut menu enabling the user to perform various functions.

The following icons are displayed in the Cisco ANA Manage window:

Table 2-1 Cisco ANA Manage Window Icons

Icon	Description
	ANA Servers branch
	Cisco ANA Gateway
	Cisco ANA Units
	Cisco ANA Redundant Unit
	AVMs (VNE)
	Global Settings branch
	DB Segments
	Client Licenses
	Message of the Day
	Polling Groups
	Protection Groups
	Scopes
	Topology
	Users
	Workflow Engine
	Templates
	Workflows

**Note**

The menus and toolbar displayed in the Cisco ANA Manage window are context sensitive; the options vary depending on your selection in the *Tree* pane and the *Workspace*.

Cisco ANA Manage Window Workspace

The *Workspace* is displayed on the right side of the Cisco ANA Manage window and enables the user to view Cisco ANA Manage information according to the branch selected in the *Tree* pane. The information displayed varies according to the branch selected in the *Tree* pane.

**Note**

Multiple rows can be selected using the standard Microsoft® Windows selection keys when a table is displayed in the *Workspace*.








The **Selection** field displayed at the bottom of the *Workspace* displays the number of selected rows and the total number of rows in the table, for example, 6/6 Selected.

In addition, it displays the location of the selected row(s) in the table, for example, Line 2.

Table Toolbar

Whenever a table forms part of the *Workspace*, the same toolbar is displayed, no matter which branch is selected in the *Tree* pane.

Table 2-2 Table Toolbar Tools

	Export to CSV —Enables the user to save the current Cisco ANA Manage working environment as a file in the Cisco ANA. For more information, see the Exporting the Table to a File section.
	Sort Table Values —Enables you to sort the information displayed in the table, for example, according to status or IP address.
	Filter —Enables the user to define a filter on the information displayed in the table of the <i>Workspace</i> using the Filter dialog box. For more information, see the Filtering Information section. Note When a filter is applied the Set Selection Filter button and the Rewind All option under the Previous Selection Filter buttons is activated.
	Set Selection Filter —Applies filters to the selected line or lines. Note When the user selects one or multiple lines in a table, the Previous Selection Filter button is activated.
	Previous Selection Filter —Enables the user to undo the last applied filter selection.
	Rewind All option —Enables the user to undo all previous applied filter selections, and returns all the originally displayed data to the table displayed in the <i>Workspace</i> . Note This option is only activated when a filter is applied.
	Opens the online Cisco ANA Manage Help.

For operating instructions on selecting lines and applying filters, see the [Filtering Information](#) and [Setting Selection Filters](#) in [General Cisco ANA Manage Tables](#) sections.

The **Find** field enables the user to search for information relating to the branch selected in the *Tree* pane. For more information about searching for information, see the [Finding Text in a Table](#) section.

Cisco ANA Manage Window, Menus and Toolbar

This section provides a detailed description of the Cisco ANA information displayed in the Cisco ANA Manage window depending on the branch selected, the menus, and toolbars.

For specific information about each branch, refer to:

- **ANA Servers**, see the [ANA Servers Branch](#) section.
- **ANA Server Entities**, including the ANA Gateway and ANA Units, see the [ANA Server Entities Branch](#) section.
- **AVM**, see the [AVM Branch](#) section.
- **Global Settings**, see the [Global Settings Branch](#) section.
- **Scopes**, see the [Scopes Branch](#) section.
- **Topology**, see the [Topology Branch](#) section.
- **Users**, see the [Users Branch](#) section.
- **Workflow Engine**, see the [Workflow Engine Branch](#) section.

ANA Servers Branch

Cisco ANA Manage maintains a list of all of the Cisco ANA Servers defined in the system. The *ANA Servers* branch enables the user to add and remove Cisco ANA Unit Servers.

The user can expand this branch to view a list of the Cisco ANA Units, Cisco ANA Gateway and AVMs. Each Cisco ANA Gateway, Cisco ANA Unit and AVM has its own sub-branch. The *ANA Servers* branch (and associated sub-branches) enables the user to manage information relating to the AVMs and VNEs contained in the Cisco ANA Units.

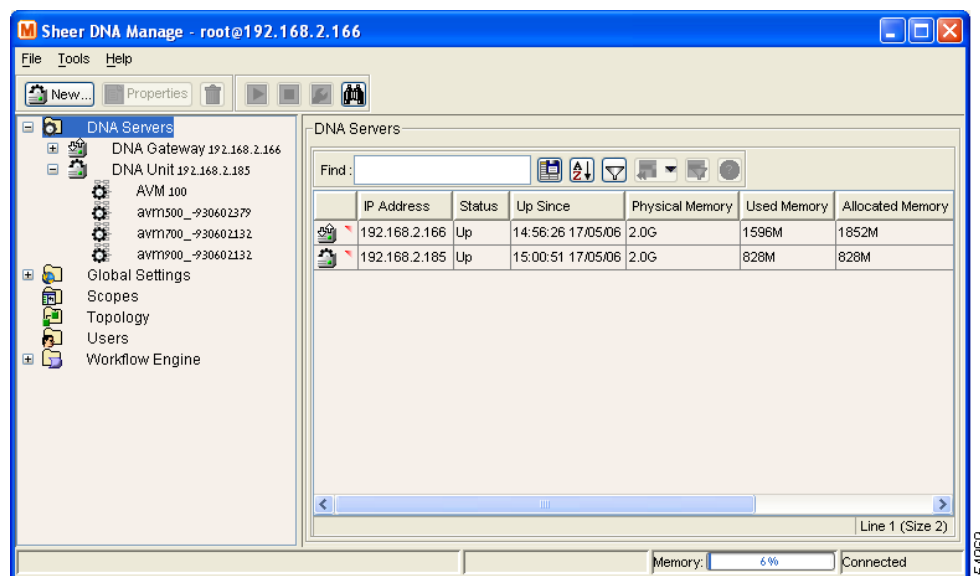


Note

AVMs and VNEs should reside on a Cisco ANA Unit (as a common configuration) but they can also reside on a Cisco ANA Gateway.

The ANA Servers branch is displayed below.

Figure 2-2 ANA Servers Branch



The ANA Servers branch contains the following sub-branches:

- **ANA Gateway** and **ANA Unit**, namely, ANA Server Entities, see the [ANA Server Entities Branch](#) section.
- **AVMs**, see the [AVM Branch](#) section.

For more information about ANA Server menu and toolbar options:

- Menu options, see the [Menus](#) section.
- Toolbar options, see the [ANA Manage Toolbar – ANA Servers Branch](#) section.

The *Workspace* area of the ANA Servers branch enables the user to view a list of all of the Cisco ANA Gateways and Cisco ANA Units and their status. Clicking on a column heading in the table in the *Workspace* sorts the Cisco ANA Units in ascending or descending order according to the selected column.



Note

Any changes that are made to the ANA Servers branch are saved automatically and registered immediately in the Cisco ANA.

The following columns are displayed in the table in the *Workspace*:

- **IP Address**—The IP address of the Cisco ANA Units, and Cisco ANA Gateways as defined in Cisco ANA Manage.
- **Status**—The status of the Cisco ANA Unit, as follows:
 - **Up**—The Cisco ANA Unit is up.
 - **Down**—The Cisco ANA Unit is down.
 - **Unreachable**—The Cisco ANA Unit cannot be reached.
- **Up Since**—The date and time when the Cisco ANA Unit was last loaded.
- **Physical Memory**—The physical memory of the Cisco ANA Unit.

- **Used Memory**—The memory being used by the Cisco ANA Unit.
- **Allocated Memory**—The amount of memory allocated to the Cisco ANA Unit. Allocated memory is the sum of all of the memory settings for all of the AVMs.
- **Protection Group**—The protection group to which the Cisco ANA Unit has been allocated.
- **AVM HA**—The Cisco ANA Unit is enabled for high availability (**true**) or disabled (**false**). By default this option is enabled for high availability.

For more information about the *ANA Servers* branch, see the [Managing Cisco ANA Units](#) section.

Menus

This section provides a description of each option available in the menus when the *ANA Servers* branch is selected. The following menus are available:

- *File* menu, as described in the next section.
- *Tools* menu, see the [Tools Menu – ANA Servers Branch](#) section.
- *Help* menu, see the [Help Menu](#) section.
- *Tree Pane* shortcut menu, see the [Tree Pane Menu – ANA Servers Branch](#) section.

File Menu – ANA Servers Branch

The *File* menu is displayed.

New ANA Unit

Creates a new Cisco ANA Unit.

Exit

Exits Cisco ANA Manage. For more information, see the [Logging Out](#) section.

Tools Menu – ANA Servers Branch

The *Tools* menu is displayed.

Change User Password

Enables the user to change the password used, when logging in to the Cisco ANA Client application suite. The change will take effect the next time that the user logs in to the application. The *Tools* menu option is the same throughout the application.

Help Menu

The *Help* menu is displayed.

The Help menu enables the user to access online help about the application and to also display application information, for example, the version number. The *Help* menu options are the same throughout the application.

Tree Pane Menu – ANA Servers Branch

When the user right-clicks on the *ANA Servers* branch the menu is displayed.


New ANA Unit

The user can add a new Cisco ANA Unit to the Cisco ANA Servers.

ANA Manage Toolbar – ANA Servers Branch

The *ANA Servers* branch contains the following tools (available tool bar options):

Table 2-3 **ANA Servers Branch Tools**

	Adds a new Cisco ANA Unit to the Cisco ANA Server.
---	--

For more information about the *ANA Servers* branch, see the [Managing Cisco ANA Units](#) section.

ANA Server Entities Branch

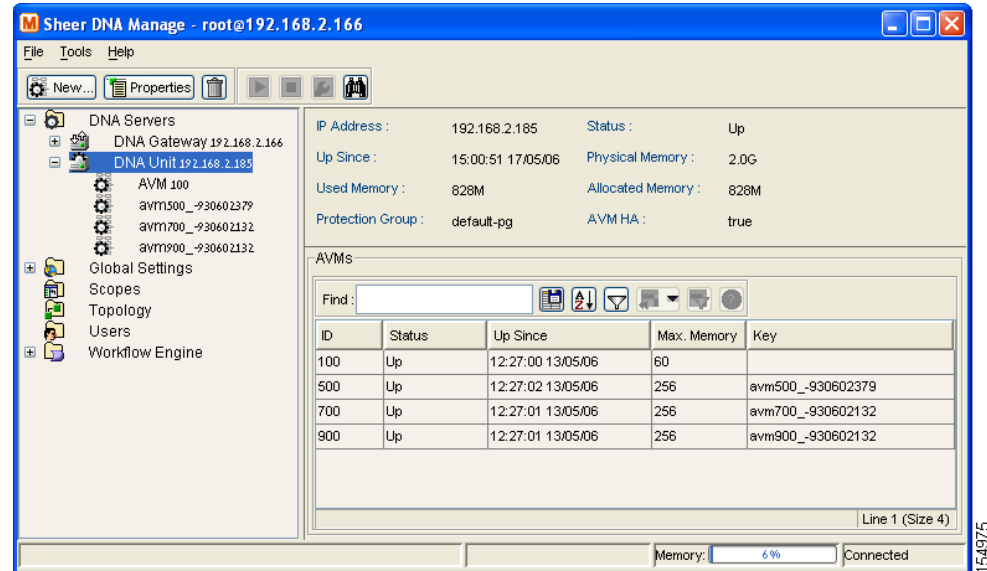
The *ANA Server Entities* sub-branch includes the **ANA Gateway** and **ANA Unit** sub-branches. All the options described here refer to both sub-branches.

The *ANA Server Entities* sub-branch enables the user to manage information relating to the AVMs and VNEs on a selected Cisco ANA Unit. These include:

- Adding, editing and removing an AVM
- Switching manually to the standby Cisco ANA Unit
- Viewing AVM properties
- Moving AVMs
- Starting and stopping AVMs and VNEs
- Adding VNEs

An example of the Cisco ANA Manage window when a *ANA Servers Entity* sub-branch is selected is displayed below.

Figure 2-3 *ANA Servers Entity Sub-branch*



Each row in the table in the *Workspace* enables the user to view the status of an AVM. The AVMs can be sorted in ascending or descending order by clicking on the column heading in the table.



Note

Any changes that are made to the *ANA Servers Entity* sub-branch are saved automatically and registered immediately in the Cisco ANA.

The following columns are displayed in the *Workspace* table for the AVMs that are listed or running under the server entity:

- **ID**—The name of the AVM as defined in Cisco ANA and unique to the AVM, for example, AVM 18.
- **Status**—The status of the AVM, as follows:
 - **Starting Up**—When an AVM is started.
 - **Up**—The AVM is up.
 - **Shutting Down**—When an AVM is stopped.
 - **Down**—The AVM is down.
 - **Unreachable**—The AVM cannot be reached.
- **Up Since**—The date and time that the Cisco ANA Unit was last started.
- **Max Memory**—The maximum allocated memory size as defined when the AVM was created in Cisco ANA Manage. The default value is 256 MB.
- **Key**—The key of the AVM, which is unique to the system. By default the key is displayed as “AVM + ID + timestamp”.

For more information about ANA Server specific menu and toolbar options:

- Menu options, see the [ANA Server Entities Menus](#) section.
- Toolbar options, see the [ANA Manage Toolbar – ANA Server Entities Branch](#) section.

ANA Server Entities Menus

This section provides a description of each option available in the menus when the *ANA Server* sub-branch is selected. The following menus are available:

- *File* menu, see the [File Menu – ANA Servers Entities Branch](#) section.
- *Tools* menu, see the [Tools Menu – ANA Servers Branch](#) section.
- *Help* menu, see the [Help Menu](#) section.
- *Tree Pane* shortcut menu, see the [Tree Pane Shortcut Menu – ANA Server Entities Branch](#) section.

File Menu – ANA Servers Entities Branch

The *File* menu is displayed.

New AVM

Adds an AVM to the selected Cisco ANA Unit. For more information, see the [Creating AVMs](#) section.

Properties

Displays the ANA Unit Properties dialog box. This dialog box lists the properties of the selected Cisco ANA Unit and indicates its status. For more information, see the [Editing Cisco ANA Unit Properties](#) section.

Exit

Exits Cisco ANA Manage.

Tree Pane Shortcut Menu – ANA Server Entities Branch

When the user right-clicks on the *ANA Server Entities* sub-branch in the *Tree* pane the following shortcut menu is displayed.

New AVM

Adds an AVM to the selected Cisco ANA Unit.

Properties

Displays the properties of the selected Cisco ANA Unit.

Switch

This option is available when high availability is enabled and is only available for Cisco ANA Units. Manually switch to the standby Cisco ANA Unit. For more information, refer to the *Cisco Active Network Abstraction High Availability User's Guide*.


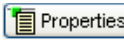


Delete

Deletes the selected Cisco ANA Unit.

ANA Manage Toolbar – ANA Server Entities Branch

When the *ANA Server Entities* sub-branch is selected in the *Tree* pane the following tools are displayed in the toolbar:

Table 2-4 **ANA Server Entities Tools**

	Creates a new AVM in the selected Cisco ANA Unit or Gateway.
	Displays the Cisco ANA Server properties and status.
	Deletes the selected Cisco ANA Unit.
	Search for a Cisco ANA AVM/VNE amongst all the Cisco ANA Servers.

For more information on the *ANA Servers Entity* sub-branch, see the [Managing AVMs and VNEs](#) section.

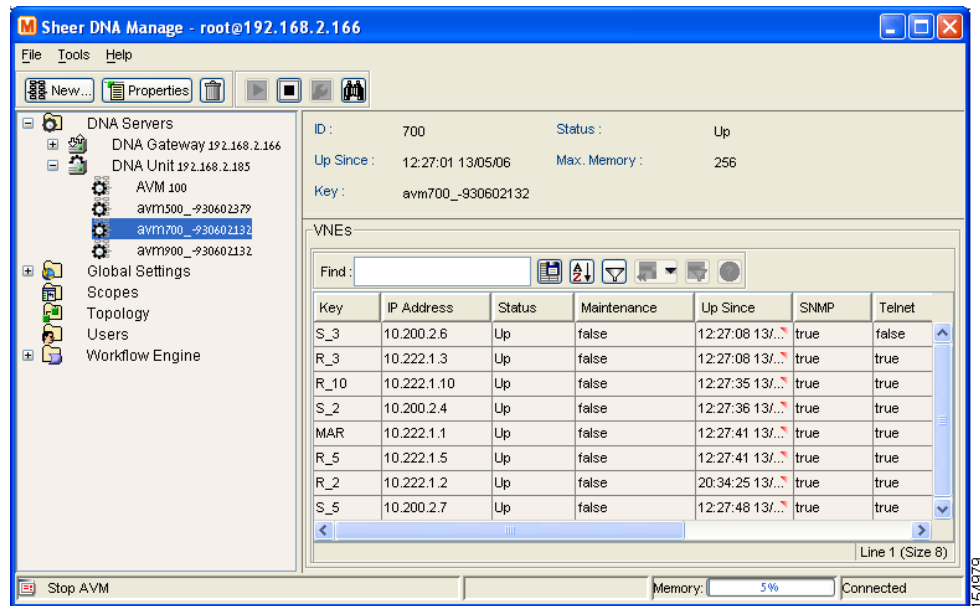
AVM Branch

The *AVM* sub-branch enables the user to manage information relating to the VNEs in a selected AVM. This includes:

- Adding, editing and removing a VNE
- Viewing VNE or AVM properties
- Deleting an AVM
- Moving AVMs and/or VNEs
- Starting and stopping VNEs or AVMs
- Moving VNEs to maintenance mode

An example of the Cisco ANA Manage window when the *AVM* sub-branch is selected is displayed below.

Figure 2-4 *AVM Sub-branch*



When the user selects the *AVM* sub-branch the workspace displays the properties of the AVM and a table with the list of VNEs.



Note

No VNEs are displayed when a special AVM (for example, AVM 66) that belongs to the Gateway is selected.

The following columns are displayed in the *Workspace* table:

- **Key**—The unique key of the VNE.
- **IP Address**—The IP address of the device as defined in Cisco ANA Manage.
- **Status**—The status of the VNE, as follows:
 - **Starting Up**—When a VNE is started.
 - **Up**—The VNE is up.
 - **Shutting Down**—When a VNE is stopped.
 - **Down**—The VNE is down.
 - **Unreachable**—Cisco ANA failed to access the VNE.
- **Maintenance**—Indicates whether the VNE is or is not in maintenance mode, namely, true or false.
- **Up Since**—The date and time that the VNE was last started.
- **SNMP**—Indicates whether this option is enabled or disabled on the VNE, namely, true or false.
- **Telnet**—Indicates whether this option is enabled or disabled on the VNE, namely, true or false.
- **Element Class**—Detects the VNE category, namely, Auto Detect, Generic SNMP, Cloud or ICMP.
- **Element Type**—The device type (manufacturer name), for example, Cisco 7204.
- **Polling Group**—The name of the customized polling group or it is blank if it is an instance.

For more information about VNEs, see the [Managing AVMs and VNEs](#) section in [VNEs Overview](#).

For more information about AVM menu and toolbar options:

- Menu options, see the [AVM Menus](#) section.
- Toolbar options, see the [Cisco ANA Manage Toolbar – AVM Branch](#) section.

AVM Menus

This section provides a description of each option available in the menus when the *AVM* sub-branch is selected. The following menus are available:

- *File* menu, as described below.
- *Tools* menu, see the [Tools Menu – ANA Servers Branch](#) section.
- *Help* menu, see the [Help Menu](#) section.
- *Tree Pane* shortcut menu, see the [Tree Pane Shortcut Menu – AVM Branch](#) section.
- *Workspace* shortcut menu, see the [Workspace Shortcut Menu – AVM Branch](#) section.

File Menu – AVM Branch

The *File* menu is displayed.

New VNE

Adds a VNE to the selected AVM.



Note

A new VNE cannot be added to the reserved AVMs 0-100.

Properties

Displays the properties of the selected AVM and its status.

Exit

Exits Cisco ANA Manage.

Tree Pane Shortcut Menu – AVM Branch

When the user right-clicks on the *AVM* sub-branch in the *Tree* pane the following menu is displayed.

New VNE

Creates a VNE for the selected AVM. For more information, see the [Creating AVMs](#) section.



Note

A new VNE cannot be added to the reserved AVMs 0-100.

Actions

Starts or stops an AVM. For more information, see the [Starting and Stopping AVMs](#) section.

Delete

Deletes an AVM from the Cisco ANA Server.

**Note**

Reserved AVMs 0-100 cannot be deleted.

Move AVM

Move an entire AVM between Cisco ANA Units. For more information, see the [Moving AVMs](#) section.

**Note**

Reserved AVMs 0-100 cannot be moved.

Properties

Displays the properties of the selected AVM.

Workspace Shortcut Menu – AVM Branch

When the user right-clicks on a selected VNE in the table the following shortcut menu (and sub-menu, when required) options are displayed.

Actions

Enables the user to start, stop or delete a VNE. In addition, the VNE can be moved to maintenance mode.

Delete

Deletes the selected VNE from an AVM.

Move VNEs

Move a single VNE between AVMs.


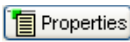




Properties

Displays the properties of the selected VNE.

Cisco ANA Manage Toolbar – AVM Branch


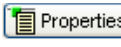





When the *AVM* sub-branch is selected in the *Tree* pane the following tools are displayed in the toolbar:

Table 2-5 AVM Tools

	Creates a new VNE in the selected AVM.
	Displays the properties of the selected AVM.
	Deletes the selected AVM.
	Starts the selected AVM.
	Stops the selected AVM.
	Search for a Cisco ANA AVM/VNE amongst all the Cisco ANA Servers.

When a VNE is selected in the table in the *Workspace* the following tools are displayed in the toolbar:

Table 2-6 VNE Tools

 New...	Creates a new VNE in the selected AVM.
 Properties	Displays the properties of the selected VNE.
	Deletes the selected VNE from an AVM.
	Starts the selected VNE.
	Moves the selected VNE to maintenance mode.
	Stops the selected VNE.
	Search for a Cisco ANA AVM/VNE amongst all the Cisco ANA Servers.

For more information on the *AVM* sub-branch, see the [Managing AVMs and VNEs](#) section.

Global Settings Branch

The *Global Settings* branch maintains system-wide settings, for example, polling and protection groups. Any changes that are made to the settings affect the configuration throughout the entire system.

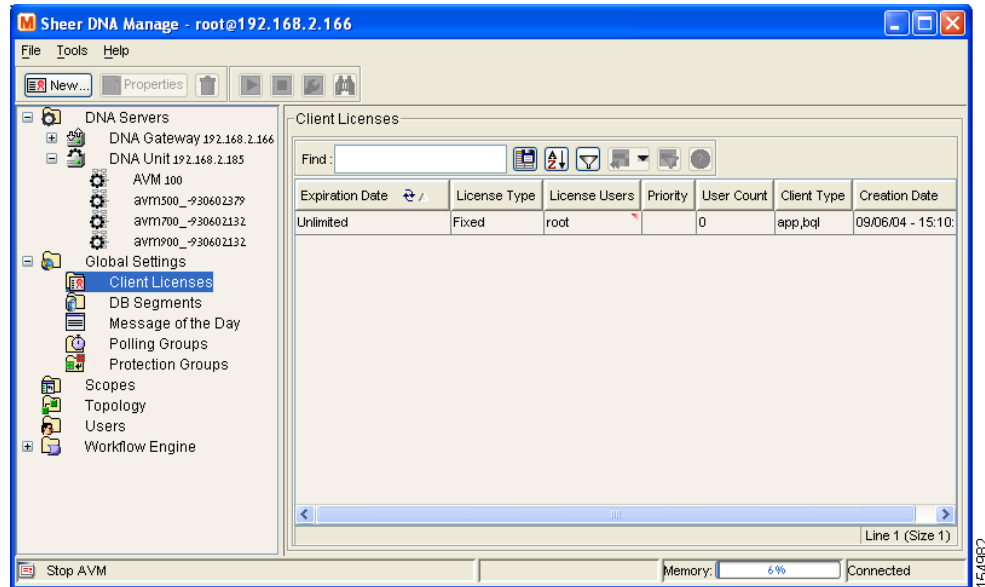
The *Global Settings* branch includes the following sub-branches:

- **Client Licenses**, see the [Client Licenses](#) section.
- **DB Segments**, see the [DB Segments Branch](#) section.
- **Message of the Day**, see the [Service Disclaimer Message of the Day](#) section.
- **Polling Groups**, see the [Polling Groups](#) section.
- **Protection Groups**, see the [Protection Groups](#) section.

Client Licenses

The *Client Licenses* sub-branch enables control and monitoring of the number of Cisco ANA Client connections over a limited or unlimited period of time as defined in terms of the client license. The Cisco ANA Manage window with the *Client Licenses* sub-branch selected is displayed below.

Figure 2-5 *Client Licenses Sub-Branch*



The following columns are displayed in the *Workspace* table when the *Client Licenses* sub-branch is selected:

- **Expiration Date**—Date of the expiration of the license. The license can be for a limited or unlimited period of time.
- **License Type**—The license type, namely:
 - **Fixed**—The number of installed users are identified by user names or IP addresses or both. For example, 5 users with the user names a, b, c, d and e.
 - or
 - **Floating**—The number of installed users operating concurrently (unspecified). For example, 5 users.
- **License Users**—The user names and/or IP addresses of the users.
- **Priority**—Unavailable in this version.
- **User Count**—The number of users allowed to operate the Cisco ANA Client applications, as defined in terms of the license. The exact number of users is displayed if the number is limited or 0 indicates an unlimited number of users.
- **Creation Date**—The date when the license was implemented.
- **Client Type**—The applications to which the user is authorized to connect, namely, BQL and/or Cisco ANA Client applications.

For more information about:

- Menu options, see the [Client Licenses Menus](#) section.

- Toolbar options, see the [Toolbar – Client Licenses Branch](#) section.

Client Licenses Menus

This section provides a description of each option available in the menus when the *Client Licenses* sub-branch is selected. The following menus are available:

- *File* menu, as described below.
- *Tools* menu, see the [Tools Menu – ANA Servers Branch](#) section.
- *Help* menu, see the [Help Menu](#) section.
- *Tree Pane* shortcut menu, see the [Tree Pane Menu – Client Licenses Branch](#) section.
- *Workspace* shortcut menu, see the [Workspace Shortcut Menu – Client Licenses Branch](#) section.

File Menu – Client Licenses Branch

The *File* menu is displayed.

New License

Install a new license.

Properties

Displays the properties of the selected license.

Exit

Exits Cisco ANA Manage.

Tree Pane Menu – Client Licenses Branch

Right clicking on the *Client Licenses* sub-branch displays the shortcut menu.

New License

Install a new license.

Workspace Shortcut Menu – Client Licenses Branch

When the user right-clicks in the table in the *Workspace* the following shortcut menu is displayed.

Delete

Deletes the selected license.


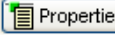

Properties

Displays the properties of the selected license.

Toolbar – Client Licenses Branch

When the *Client Licenses* sub-branch is selected in the *Tree* pane the toolbar contains the following tools:

Table 2-7 *Client Licenses Tools*

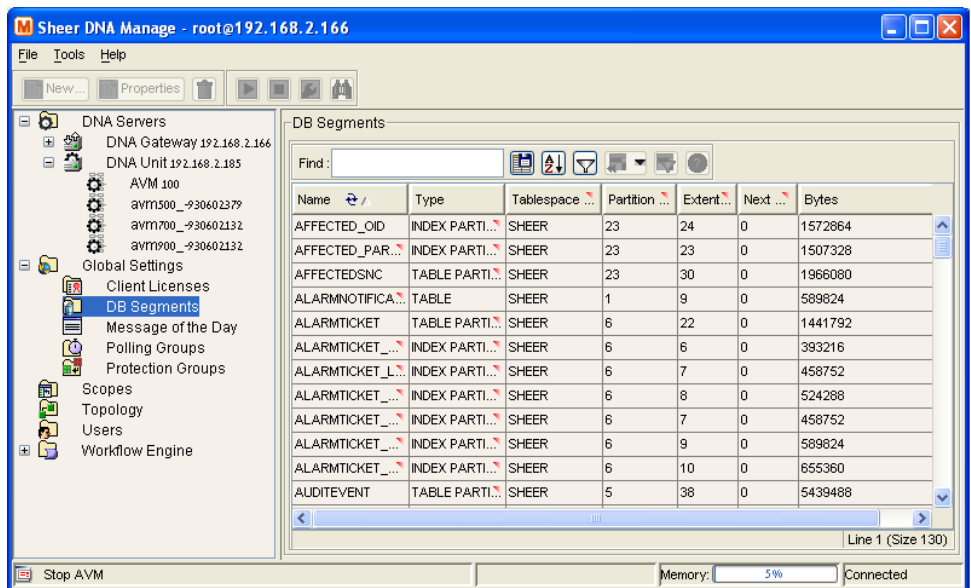
	Install a new license.
	Displays the properties of the selected license.
	Deletes the selected license.

For more information about client licenses, see the [Managing Client Licenses](#) section.

DB Segments Branch

The *DB segments* branch in Cisco ANA Manage displays a table describing the storage allocated for all database segments. An example of the Cisco ANA Manage window when the *DB Segments* branch is selected is displayed below.

Figure 2-6 *DB Segments Branch*



The following columns are displayed in the *Workspace* table when the *DB Segments* branch is selected:

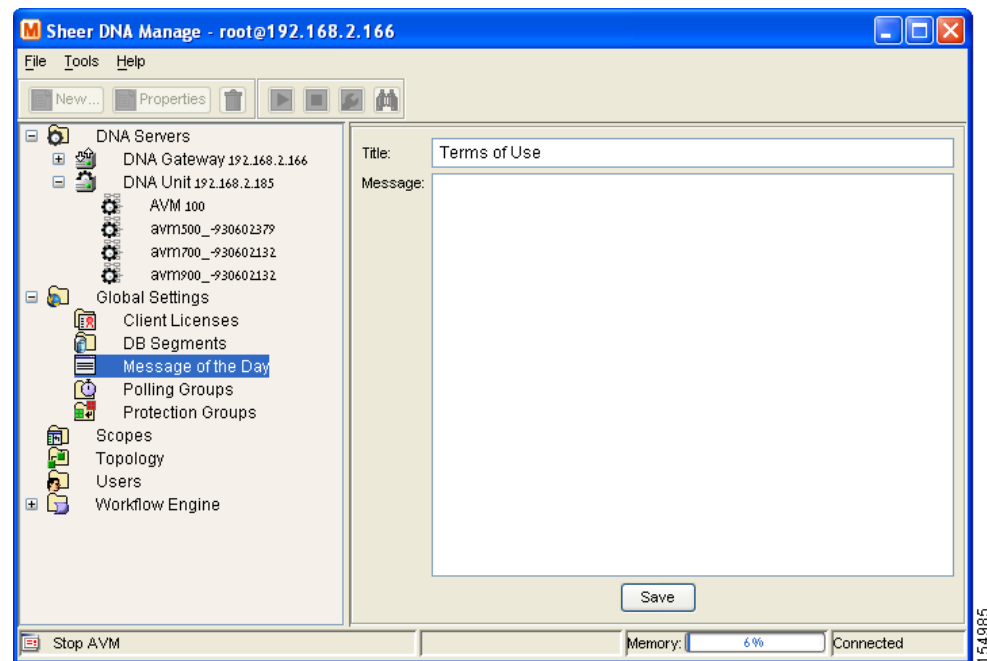
- **Name**—Name of the segment.
- **Type**—Type of segment, namely, INDEX PARTITION, TABLE PARTITION, TABLE, CLUSTER, INDEX, ROLLBACK, DEFERRED ROLLBACK, TEMPORARY, CACHE, LOBSEGMENT and LOBINDEX
- **Tablespace Name**—Name of the table space containing the segment.
- **Partition Count**—Number of partitions.

- **Extent Count**—Number of extents allocated to the segment where the data is stored.
- **Next Extent Size**—Size in bytes of the next extent to be allocated to the segment.
- **Bytes**—Size in bytes, of the segment.

Service Disclaimer Message of the Day

The *Message of the Day* sub-branch enables the user to define a message (service disclaimer) that will be displayed when a user logs in to the Cisco Client applications. An example of the Cisco ANA Manage window when the *Message of the Day* sub-branch is selected is displayed below.

Figure 2-7 *Message of the Day Sub-Branch*



The following areas are displayed in the *Workspace*:

- **Title**—The title of the message, which is displayed as the title of the dialog box. By default the title “Terms of Use” is displayed.
- **Message**—A free text message for the user. The message supports HTML format.



Note

The **Abort** and **Continue** buttons are displayed in the message dialog box by default, so the message must relate to these actions. The user must accept (Continue) the service disclaimer otherwise the user will be unable to login.

The following button is displayed in the *Workspace*:

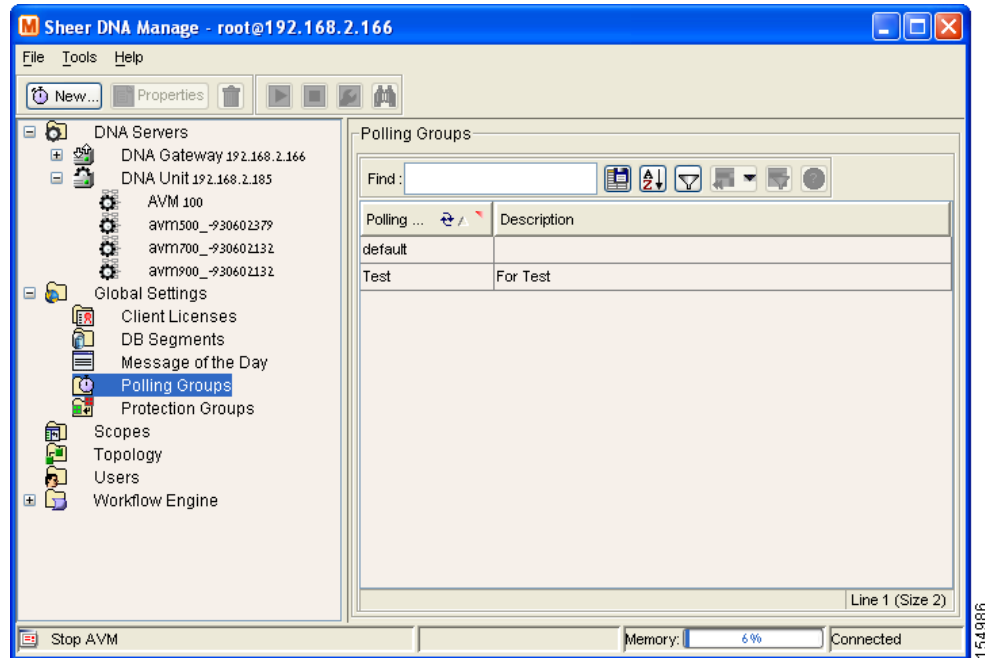
- **Save**—Saves the message so that it is displayed when the user logs in to a Cisco Client application.

For more information about the *Message of the Day* branch, see the [Customizing a Message of the Day](#) section.

Polling Groups

The *Polling Groups* sub-branch enables the user to manage polling groups, by categorizing a group of devices to be polled according to pre-set intervals. The *Polling Groups* sub-branch is displayed below.

Figure 2-8 *Polling Groups Sub-Branch*



The following columns are displayed in the *Workspace* table when the *Polling Groups* sub-branch is selected:

- **Polling Group**—The polling group name defined by the user
- **Description**—A description of the polling group.



Note

Any changes that are made to the *Polling Groups* sub-branch are saved automatically and registered immediately in the Cisco ANA.

For more information about:

- Menu options, see the [Polling Group Menus](#) section.
- Toolbar options, see the [Toolbar – Polling Groups Branch](#) section.

Polling Group Menus

This section provides a description of each option available in the menus when the *Polling Groups* sub-branch is selected. The following menus are available:

- *File* menu, see the [File Menu – Polling Groups Branch](#) section.
- *Tools* menu, see the [Tools Menu – ANA Servers Branch](#) section.
- *Help* menu, see the [Help Menu](#) section.
- *Tree Pane* shortcut menu, see the [Tree Pane Menu – Polling Groups Branch](#) section.

- *Workspace* shortcut menu, see the [Workspace Shortcut Menu – Polling Groups Branch](#) section.

File Menu – Polling Groups Branch

The *File* menu is displayed.

New Polling Group

Creates a new polling group.

Properties

Displays the properties of the selected polling group.

Exit

Exits Cisco ANA Manage.

Tree Pane Menu – Polling Groups Branch

Right-clicking on the *Polling Groups* sub-branch displays the shortcut menu.

New Polling Group

Creates a new polling group.

Workspace Shortcut Menu – Polling Groups Branch

When the user right-clicks in the table in the *Workspace* the following shortcut menu, is displayed.

Properties

Displays the properties of the selected polling group.

Delete

Deletes the selected polling group.




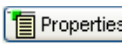

Note

The default polling group must not be deleted.

Toolbar – Polling Groups Branch

When the *Polling Groups* sub-branch is selected in the *Tree* pane the toolbar contains the following tools:

Table 2-8 **Polling Groups Tools**

	Creates a new polling group.
	Displays the properties of the selected polling group.
	Deletes the selected polling group.
Note The default polling group must not be delete.	

When a polling group is selected in the table in the *Workspace*, clicking **Properties** in the toolbar displays the properties of the polling group in a Properties dialog box.

For more information about polling groups, see the [Managing Polling Groups](#) section.

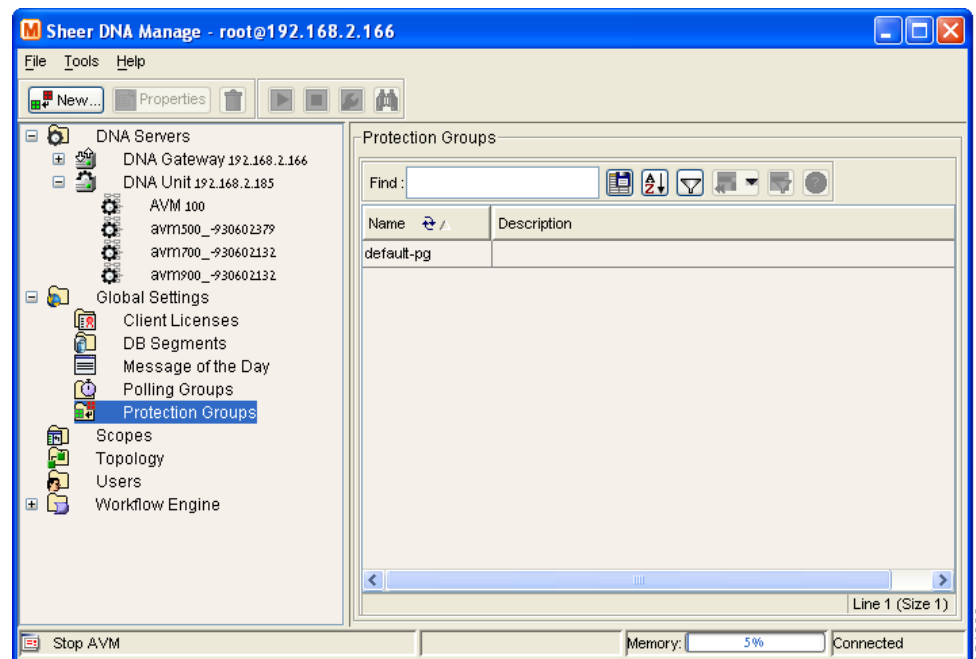
Protection Groups

By default all the Cisco ANA Units in the Cisco ANA Fabric belong to one big cluster. The *Protection Groups* sub-branch enables the administrator to change the default setup of the Cisco ANA Units by customizing protection groups (clusters) and then assigning Cisco ANA Units to these protection groups.

For more information, refer to the *Cisco Active Network Abstraction High Availability User's Guide*.

The Cisco ANA Manage window with the *Protection Groups* sub-branch selected is displayed below.

Figure 2-9 *Protection Groups Sub-Branch*



The following columns are displayed in the *Workspace* table when the *Protection Groups* sub-branch is selected:

- **Name**—The protection group name defined by the administrator.
- **Description**—A description of the protection group.

For more information about:

- Menu options, see the [Protection Group Menus](#) section.
- Toolbar options, see the [Toolbar – Protection Groups Branch](#) section.

Protection Group Menus

This section provides a description of each option available in the menus when the *Protection Groups* sub-branch is selected. The following menus are available:

- *File* menu, see the [File Menu – Protection Groups Branch](#) section.
- *Tools* menu, see the [Tools Menu – ANA Servers Branch](#) section.
- *Help* menu, see the [Help Menu](#) section.

- *Tree Pane* shortcut menu, see the [Tree Pane Menu – Protection Groups Branch](#) section.
- *Workspace* shortcut menu, see the [Workspace Shortcut Menu – Protection Group Branch](#) section.

File Menu – Protection Groups Branch

The *File* menu is displayed.

New Protection Group

Creates a new protection group.

Properties

Displays the properties of the selected protection group.

Exit

Exits Cisco ANA Manage.

Tree Pane Menu – Protection Groups Branch

Right clicking on the *Protection Groups* sub-branch displays the shortcut menu.

New Protection Group

Creates a new protection group.

Workspace Shortcut Menu – Protection Group Branch

When the user right-clicks in the table in the *Workspace* the following shortcut menu is displayed.

Delete

Deletes the selected protection group.



Note

The default protection group must not be deleted.


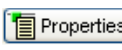

Properties

Displays the properties of the selected protection group in a Properties dialog box.

Toolbar – Protection Groups Branch

When the *Protection Groups* sub-branch is selected in the *Tree* pane the toolbar contains the following tools:

Table 2-9 **Protection Group Tools**

	Creates a new protection group.
	Displays the properties of the selected protection group.
	Deletes the selected protection group. Note The default protection group must not be deleted.

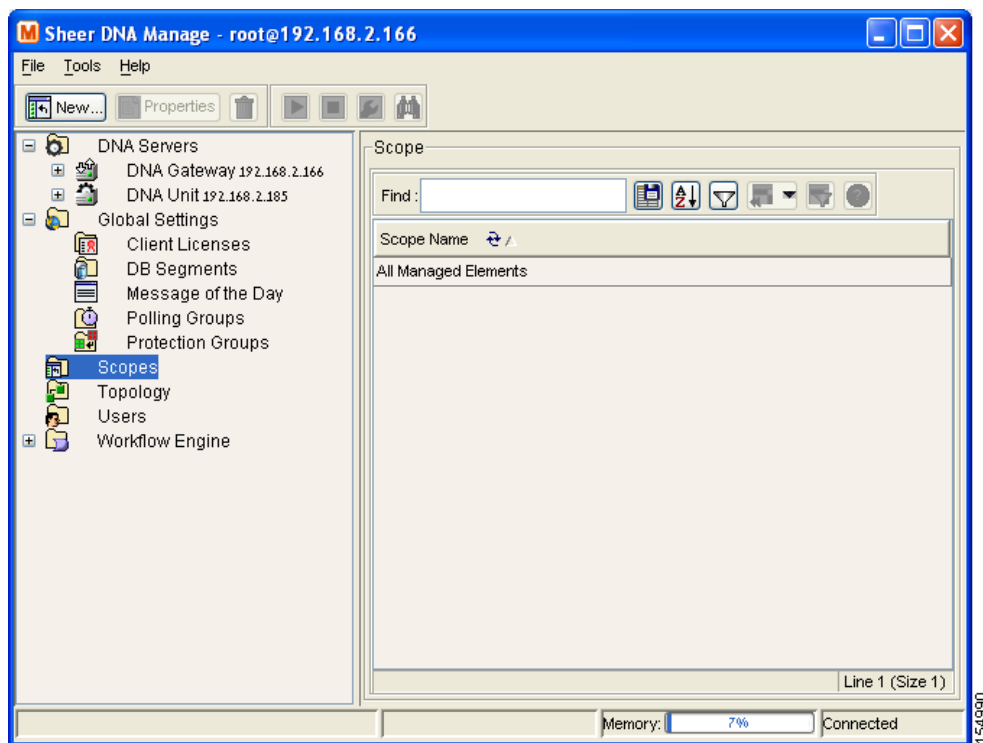
For more information about protection groups, refer to the *Cisco Active Network Abstraction High Availability User's Guide*.

Scopes Branch

The *Scopes* branch enables the administrator to group a collection of managed Network Elements together in order to enable the user to view and/or manage the Network Elements based on the role granted to the user for the scope. For more information on the *Scopes* branch, see the [Managing Cisco ANA Security](#) section.

The *Scopes* branch is displayed below.

Figure 2-10 **Scopes Branch**



Each row in the table in the *Workspace* displays the name of a scope as defined in Cisco ANA Manage.

For more information about:

- Menu options, refer to following section.
- Toolbar, see the [Toolbar – Scopes Branch](#) section.



Note

The menus and toolbar displayed in the Cisco ANA Manage window are context sensitive; the options vary depending on your selection in the *Tree* pane and *Workspace*.

Scopes Menus

This section provides a description of each option available in the menus when the *Scopes* branch is selected. The following menus are available:

- *File* menu, as described in the following section.
- *Tools* menu, see the [Tools Menu – ANA Servers Branch](#) section.
- *Help* menu, see the [Help Menu](#) section.
- *Tree Pane* shortcut menu, see the [Tree Pane Shortcut Menu – Scopes Branch](#) section.
- *Workspace* shortcut menu, see the [Workspace Shortcut Menu – Scopes Branch](#) section.

File Menu – Scopes Branch

The *File* menu for the *Scopes* branch is displayed.

New Scope

Creates a new scope.

Properties

Displays the properties of the selected scope.

Exit

Exits Cisco ANA Manage. For more information, see the [Logging Out](#) section.

Tree Pane Shortcut Menu – Scopes Branch

When the user right-clicks on the *Scopes* branch in the *Tree* pane the shortcut menu is displayed.

New Scope

Creates a new scope.

Workspace Shortcut Menu – Scopes Branch

When the user right-clicks in the table in the *Workspace* the following shortcut menu is displayed.

Delete

Deletes the selected scope.

Properties

Displays the properties of the selected scope.




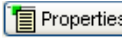

Note

The user cannot delete or edit the **All Managed Elements** scope in the table in the *Workspace*. For more information, see the [Scopes](#) section.

Toolbar – Scopes Branch

When the *Scopes* branch is selected in the *Tree* pane the toolbar contains the following tools:

Table 2-10 **Scopes branch Tools**

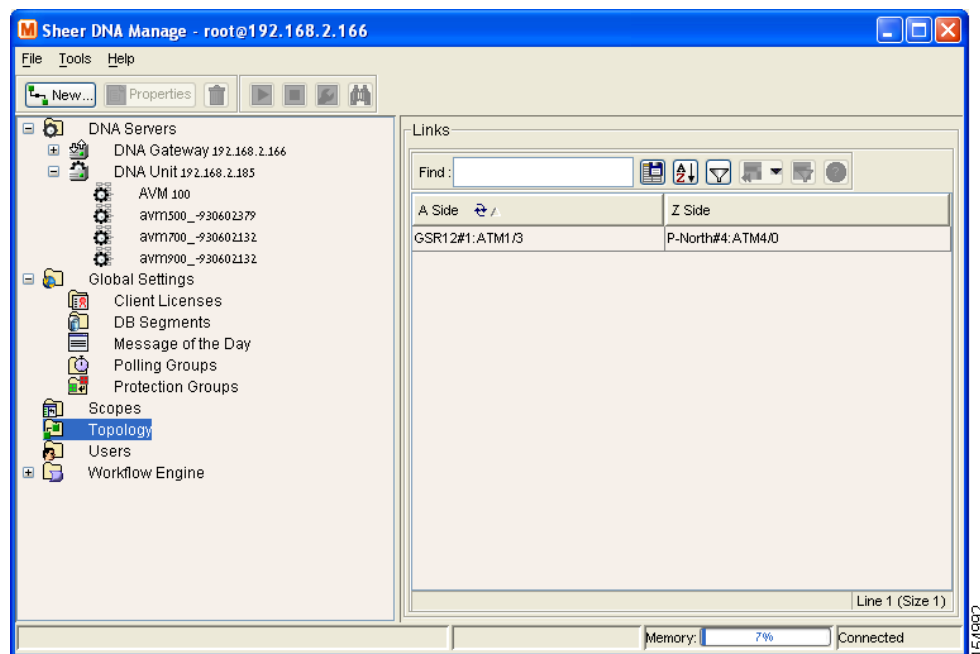
	Creates a new scope. For more information, see the Creating Scopes section.
	Displays the properties of the selected scope.
	Deletes the selected scope.

When a scope is selected in the table in the *Workspace*, clicking **Properties** in the toolbar displays the properties of the selected scope in a Properties dialog box.

Topology Branch

The *Topology* branch enables the user to define static links between the Network Elements in order to supplement or override existing auto-discovered topology. The Cisco ANA Manage window with the *Topology* branch selected is displayed below.

Figure 2-11 **Topology Branch**



The *Topology* branch displays all of the static links defined in the system including the A Side and Z Side of the link.

For more information about:

- Menu options, see the [Topology Menus](#) section.

- Toolbar options, see the [Toolbar – Topology Branch](#) section.

Topology Menus

This section provides a description of each option available in the menus when the *Topology* branch is selected. The following menus are available:

- *File* menu, as described in the following section.
- *Tools* menu, see the [Tools Menu – ANA Servers Branch](#) section.
- *Help* menu, see the [Help Menu](#) section.
- *Tree Pane* shortcut menu, see the [Tree Pane Shortcut Menu – Topology Branch](#) section.
- *Workspace* shortcut menu, see the [Workspace Shortcut Menu – Topology Branch](#) section.

File Menu – Topology Branch

The *File* menu is displayed.

New Static Link

Creates a new static link.

Properties

This option is unavailable.

Exit

Exits Cisco ANA Manage. For more information, see the [Logging Out](#) section.

Tree Pane Shortcut Menu – Topology Branch

When the user right-clicks on the *Topology* branch in the *Tree* pane the shortcut menu is displayed.

New Static Link

Creates a new static link.

Workspace Shortcut Menu – Topology Branch

When the user right-clicks in the table in the *Workspace* the shortcut menu is displayed.



Delete

Deletes the selected static link.

Toolbar – Topology Branch

The *Topology* branch contains the following tools:

Table 2-11 **Topology branch Tools**

	Opens the New Link dialog box enabling the user to create a link between two devices. For more information, see the Creating a Static Link section.
	Deletes the selected static link.

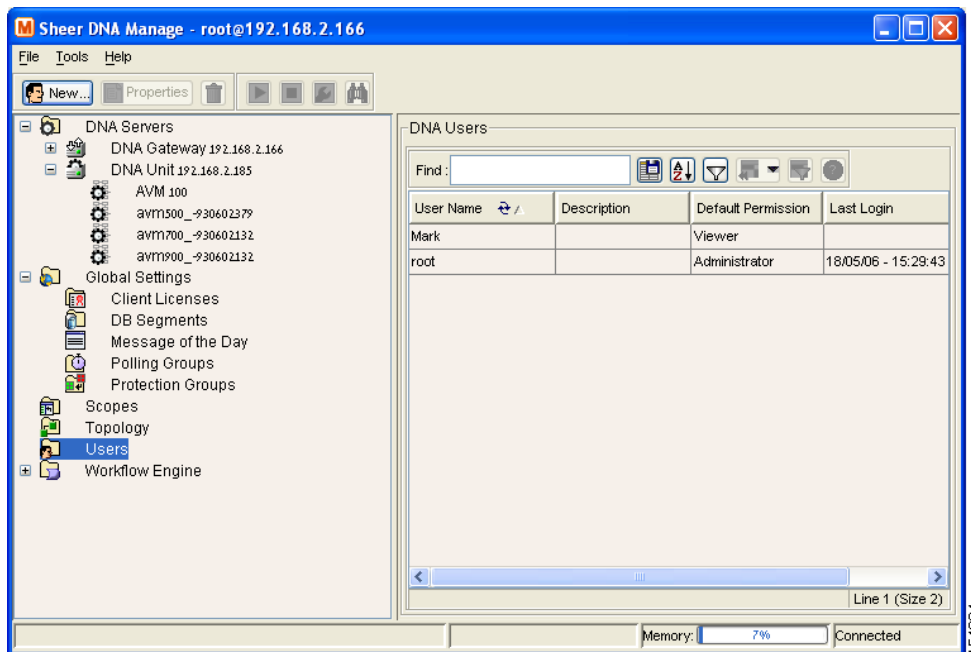
For more information about the *Topology* branch, see the [Managing Links](#) section.

Users Branch

The *Users* branch enables the administrator to define and manage user accounts. For more information about the *Users* branch, see the [Managing Cisco ANA Security](#) section.

The Cisco ANA Manage window with the *Users* branch selected is displayed below.

Figure 2-12 **Users Branch**



Each row in the table in the *Workspace* displays the user name and a description of the user.

The following columns are displayed in the *Workspace* table:

- **User Name**—The user name (unique) defined for the current client station.
- **Description**—A description of the user.
- **Default Permission**—The default permission of the user, namely, Viewer to Administrator. For example, a user with the default permission Viewer can view maps and the Device List.

**Note**

The default permission only applies at an application level, namely, all the activities that are related to GUI functionality, not the activities related to devices. For more information, see the [Managing Cisco ANA Security](#) section.

- **Last Login**—The date and time that the user last logged in.

For more information about:

- Menu options, see the [Users Menus](#) section.
- Toolbar options, see the [Toolbar – Users Branch](#) section.

**Note**

The menus and toolbar displayed in the Cisco ANA Manage window are context sensitive; the options vary depending on your selection in the *Tree* pane and *Workspace*.

Users Menus

This section provides a description of each option available in the menus when the *Users* branch is selected. The following menus are available:

- *File* menu, as described in the following section.
- *Tools* menu, see the [Tools Menu – ANA Servers Branch](#) section.
- *Help* menu, see the [Help Menu](#) section.
- *Tree Pane* shortcut menu, see the [Tree Pane Menu – Users Branch](#) section.
- *Workspace* shortcut menu, see the [Workspace Shortcut Menu – Users Branch](#) section.

File Menu – Users Branch

The *File* menu is displayed.

New User

Creates a new user for the current client station.

Properties

Displays the properties of the selected user.

Exit

Exits Cisco ANA Manage. For more information, see the [Logging Out](#) section.

Tree Pane Menu – Users Branch

When the user right-clicks on the *Users* branch in the *Tree* pane the shortcut menu is displayed.

New User

Creates a new user for the current client station.

Workspace Shortcut Menu – Users Branch

When the user right-clicks in the table in the *Workspace* the shortcut menu is displayed.

Change Password

Displays the Set Password dialog box that enables the administrator to edit a user's password.

Delete

Deletes the selected user name from the system.

**Note**

The user name **root** cannot be deleted.


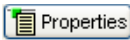

Properties

Displays the properties of the selected user.

Toolbar – Users Branch

The *Users* branch contains the following tools:

Table 2-12 ***Users branch Tools***

	Opens the New User dialog box enabling the user to define a new user for the current client station.
	Displays the properties of the selected user.
	Deletes the selected user name from the system.

Workflow Engine Branch

The *Workflow Engine* branch enables the user to manage workflow templates and running workflows in runtime. The *Workflow Engine* branch includes the following sub-branches:

- **Templates**—Displays a list of the deployed workflow templates and enables the user to view the properties of the workflow template. For more information, refer to the section below.
- **Workflows**—Displays a list of the running or completed workflows and enables the user to view and alter their current status. For more information, see the [Workflows](#) section.

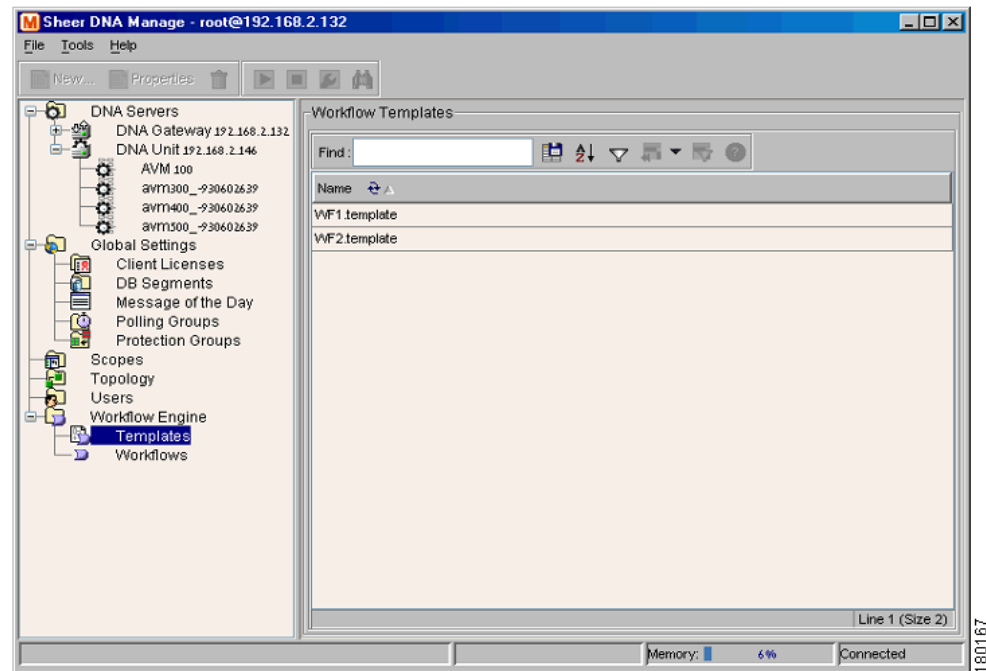
Templates

The *Templates* sub-branch enables the user to:

- View a list of the deployed workflow templates
- View the properties (attributes) of a workflow template
- Delete a workflow template

The Cisco ANA Manage window with the *Templates* sub-branch selected is displayed below.

Figure 2-13 *Templates Sub-Branch*



The table displays the names of the workflow templates (in the *Workspace*), as defined using the Cisco Workflow Editor.

For more information about:

- Menu options, refer to the following section.
- Toolbar options, see the [Toolbar – Templates Branch](#) section.

Templates Menus

This section provides a description of each option available in the menus when the *Templates* sub-branch is selected. The following menus are available:

- *Tools* menu, see the [Tools Menu – ANA Servers Branch](#) section.
- *Help* menu, see the [Help Menu](#) section.
- *Tree Pane* shortcut menu, see the [Tree Pane Shortcut Menu – Templates Branch](#) section.
- *Workspace* shortcut menu, see the [Workspace Shortcut Menu – Templates Branch](#) section.

Tree Pane Shortcut Menu – Templates Branch

Right clicking on the *Templates* sub-branch displays the shortcut menu.

Properties

Displays a list of the workflow templates available on the Cisco ANA Gateway.

Workspace Shortcut Menu – Templates Branch

When the user right-clicks in the table in the *Workspace* the shortcut menu is displayed.

Properties

Displays the properties (attributes) of the selected workflow template.


Delete

Deletes the selected workflow template.

Toolbar – Templates Branch

When the *Templates* sub-branch is selected in the *Tree* pane and a template is selected in the workspace, the toolbar contains the following tool:

Table 2-13 **Templates Sub-branch Tools**

	Deletes the selected workflow template.
---	---

For more information about workflows, refer to the *Cisco Active Network Abstraction Workflow User's Guide*.

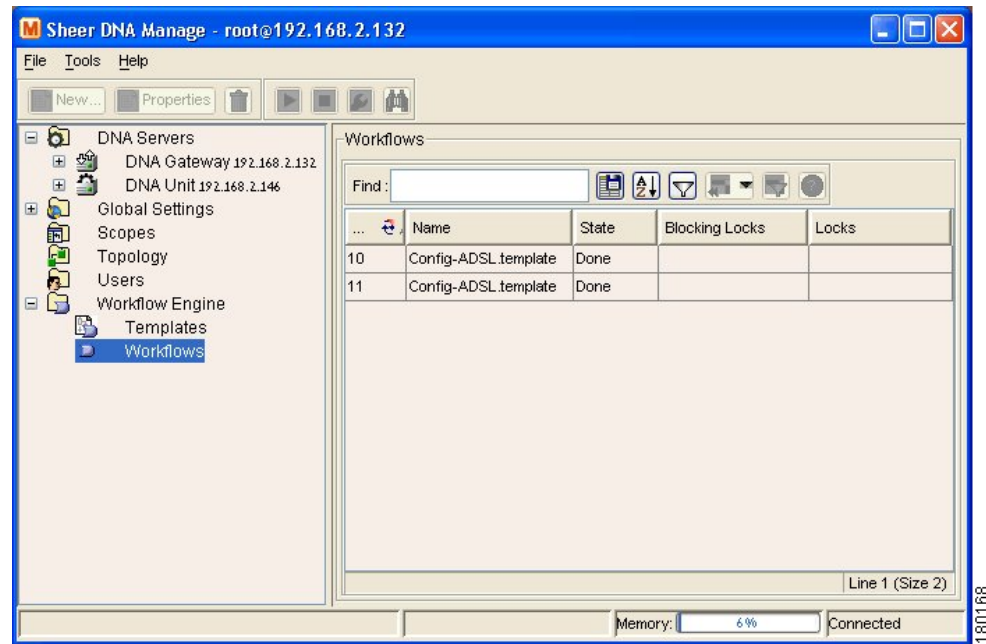
Workflows

The *Workflows* sub-branch enables the user to:

- View the list of running or completed workflows and the status of each
- View the output of a workflow
- Abort a workflow that is being processed or that has been completed, and initiate rollback
- Delete a workflow
- View the properties of a workflow

The Cisco ANA Manage window with the *Workflows* sub-branch selected is displayed.

Figure 2-14 **Workflows Sub-Branch**



The following columns are displayed in the *Workspace* table when the *Workflows* sub-branch is selected:

- **ID:**—A unique sequential number given to the workflow.
- **Name:**—The name of the workflow, as defined using the Cisco Workflow Editor.
- **State:**—The current status of the workflow, namely, **Ready**, **Running**, **Done**, or **Aborted**.
- **Blocking Locks:**—The locks that this workflow is waiting to release.
- **Locks:**—The locks that this workflow currently owns (is holding).

For more information about:

- Menu options, refer to the following section.
- Toolbar options, see the [Toolbar – Workflows Branch](#) section.

Workflows Menus

This section provides a description of each option available in the menus when the *Workflows* sub-branch is selected. The following menus are available:

- *Tools* menu, see the [Tools Menu – ANA Servers Branch](#) section.
- *Help* menu, see the [Help Menu](#) section.
- *Tree Pane* shortcut menu, see the [Tree Pane Menu – Workflows Branch](#) section.
- *Workspace* shortcut menu, see the [Workspace Shortcut Menu – Workflows Branch](#) section.

Tree Pane Menu – Workflows Branch

Right clicking on the *Workflows* sub-branch displays the shortcut menu.

Properties

Displays a list of the scripts and their current status.

Workspace Shortcut Menu – Workflows Branch

When the user right-clicks in the table in the *Workspace* the shortcut menu is displayed.

Show Output

View the output of the workflow.

Abort/Rollback

Aborts the workflow and performs rollback if the workflow is running, or if the workflow has already been completed it performs rollback.

Delete

Deletes the workflow from the database.

**Note**

A workflow can only be deleted from the database when it is **Done** or **Aborted**. It cannot be deleted while the process is still running.


Properties

Displays the properties (attributes) of the selected workflow, including its status.

Toolbar – Workflows Branch

When the *Workflows* sub-branch is selected in the *Tree* pane and a workflow is selected in the workspace, the toolbar contains the following tool:

Table 2-14 Workflows Sub-Branch Tools

	Deletes the workflow from the database.
---	---

For more information about workflows, refer to the *Cisco Active Network Abstraction Workflow User's Guide*.

Logging Out

When the user has finished working with Cisco ANA Manage the user can log out of the application. Any changes that were made are automatically saved when logging out.

To log out of Cisco ANA Manage:

-
- Step 1** From the *File* menu, select **Exit**,
or
Click in the top right-hand corner to close the Cisco ANA Manage window.
A confirmation message is displayed.
- Step 2** Click **Yes**. The Cisco ANA Manage window is closed.
-

