



## **Creating Custom and Overlay Templates in Cisco StadiumVision Director**

**Release 2.3 and Later Releases**

**April 2013**

Corporate Headquarters  
Cisco Systems, Inc.  
170 West Tasman Drive  
San Jose, CA 95134-1706  
USA  
<http://www.cisco.com>  
Tel: 408 526-4000  
800 553-NETS (6387)  
Fax: 408 526-4100

THE SPECIFICATIONS AND INFORMATION REGARDING THE PRODUCTS IN THIS MANUAL ARE SUBJECT TO CHANGE WITHOUT NOTICE. ALL STATEMENTS, INFORMATION, AND RECOMMENDATIONS IN THIS MANUAL ARE BELIEVED TO BE ACCURATE BUT ARE PRESENTED WITHOUT WARRANTY OF ANY KIND, EXPRESS OR IMPLIED. USERS MUST TAKE FULL RESPONSIBILITY FOR THEIR APPLICATION OF ANY PRODUCTS.

THE SOFTWARE LICENSE AND LIMITED WARRANTY FOR THE ACCOMPANYING PRODUCT ARE SET FORTH IN THE INFORMATION PACKET THAT SHIPPED WITH THE PRODUCT AND ARE INCORPORATED HEREIN BY THIS REFERENCE. IF YOU ARE UNABLE TO LOCATE THE SOFTWARE LICENSE OR LIMITED WARRANTY, CONTACT YOUR CISCO REPRESENTATIVE FOR A COPY.

The Cisco implementation of TCP header compression is an adaptation of a program developed by the University of California, Berkeley (UCB) as part of UCB's public domain version of the UNIX operating system. All rights reserved. Copyright © 1981, Regents of the University of California.

NOTWITHSTANDING ANY OTHER WARRANTY HEREIN, ALL DOCUMENT FILES AND SOFTWARE OF THESE SUPPLIERS ARE PROVIDED "AS IS" WITH ALL FAULTS. CISCO AND THE ABOVE-NAMED SUPPLIERS DISCLAIM ALL WARRANTIES, EXPRESSED OR IMPLIED, INCLUDING, WITHOUT LIMITATION, THOSE OF MERCHANTABILITY, FITNESS FOR A PARTICULAR PURPOSE AND NON-INFRINGEMENT OR ARISING FROM A COURSE OF DEALING, USAGE, OR TRADE PRACTICE.

IN NO EVENT SHALL CISCO OR ITS SUPPLIERS BE LIABLE FOR ANY INDIRECT, SPECIAL, CONSEQUENTIAL, OR INCIDENTAL DAMAGES, INCLUDING, WITHOUT LIMITATION, LOST PROFITS OR LOSS OR DAMAGE TO DATA ARISING OUT OF THE USE OR INABILITY TO USE THIS MANUAL, EVEN IF CISCO OR ITS SUPPLIERS HAVE BEEN ADVISED OF THE POSSIBILITY OF SUCH DAMAGES.

Cisco and the Cisco Logo are trademarks of Cisco Systems, Inc. and/or its affiliates in the U.S. and other countries. A listing of Cisco's trademarks can be found at

[www.cisco.com/go/trademarks](http://www.cisco.com/go/trademarks). Third party trademarks mentioned are the property of their respective owners. The use of the word partner does not imply a partnership relationship between Cisco and any other company. (1005R)

Any Internet Protocol (IP) addresses and phone numbers used in this document are not intended to be actual addresses and phone numbers. Any examples, command display output, network topology diagrams, and other figures included in the document are shown for illustrative purposes only. Any use of actual IP addresses or phone numbers in illustrative content is unintentional and coincidental.

# Table of Contents

---

<b>Document History .....</b>	<b>4</b>
<b>Creating Custom and Overlay Templates.....</b>	<b>5</b>
<b>Naming Screen Templates .....</b>	<b>5</b>
<b>Custom Screen Templates .....</b>	<b>5</b>
Creating a Custom Screen Template .....	6
Modifying a Custom Screen Template.....	8
Deleting a Region from a Custom Screen Template .....	8
Deleting a Custom Template .....	9
<b>Overlay Screen Templates .....</b>	<b>9</b>
Content Creation for Overlay Graphics.....	10
Creating an Overlay Screen Template .....	11

# Document History

---

**Table 1.** Revision History

Date	Description
April 14, 2013	Added note for support of later releases and introduction of support for mixed media in Release 3.1.
April 13, 2011	First release for Cisco StadiumVision Director Release 2.3.

**NOTE:** This document provides illustrations for Cisco StadiumVision Director Release 2.3, but is also applicable to later releases with some differences in the user interface for that release.

Cisco StadiumVision Director Release 3.1 introduces support for a playlist to contain a mixture of video and non-video content. The playlist can be placed anywhere a mixed-media region is defined. To use, the playlist must be configured for the type "Video and Mixed Media."

For the latest information about new and changed information in a Cisco StadiumVision Director release, see the release notes document for that release.

# Creating Custom and Overlay Templates

---

**The procedures in this guide can only be performed with StadiumVision Director Administrator or Content Manager Role Based Access Control.**

StadiumVision Director provides the capability to create custom templates, allowing you to customize the size and arrangements of the regions on the screen. You can also create “overlay” templates that allow a non-video template region to overlap a video template region (DMP 4310G).

In creating custom screen templates, you specify different sizes for the screen template regions. With overlay screen templates, you can configure a non-video region to overlap a video region.

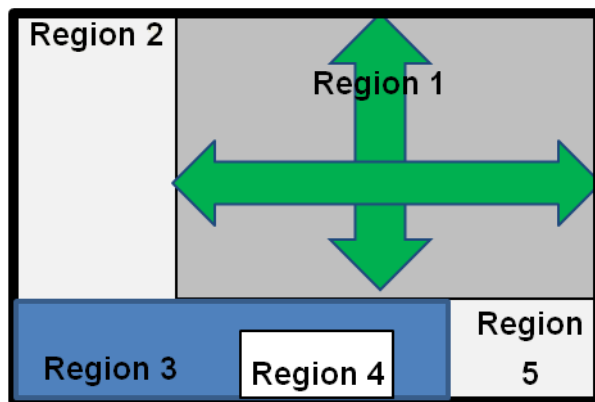
## Naming Screen Templates

When naming your screen templates, use meaningful acronyms within the name to help you to easily identify the screen template. For example, you could include “FV” in the name to indicate the screen template is for full screen video, or “LW” to indicate the screen template is for an L-wrapper. Additionally, you can include other pertinent information such as “beer” for a playlist that only has beer advertisements in it or “BrandY” for a playlist that only has BrandY products in it.

## Custom Screen Templates

StadiumVision Director 2.2 supports custom templates, allowing you to change the size and arrangements of the regions on the screen to fit the sponsor/venue needs. Up to 5 regions can be created. Note: Region 1 is always the video region. Refer to Figure 1.

Figure 1. Custom template



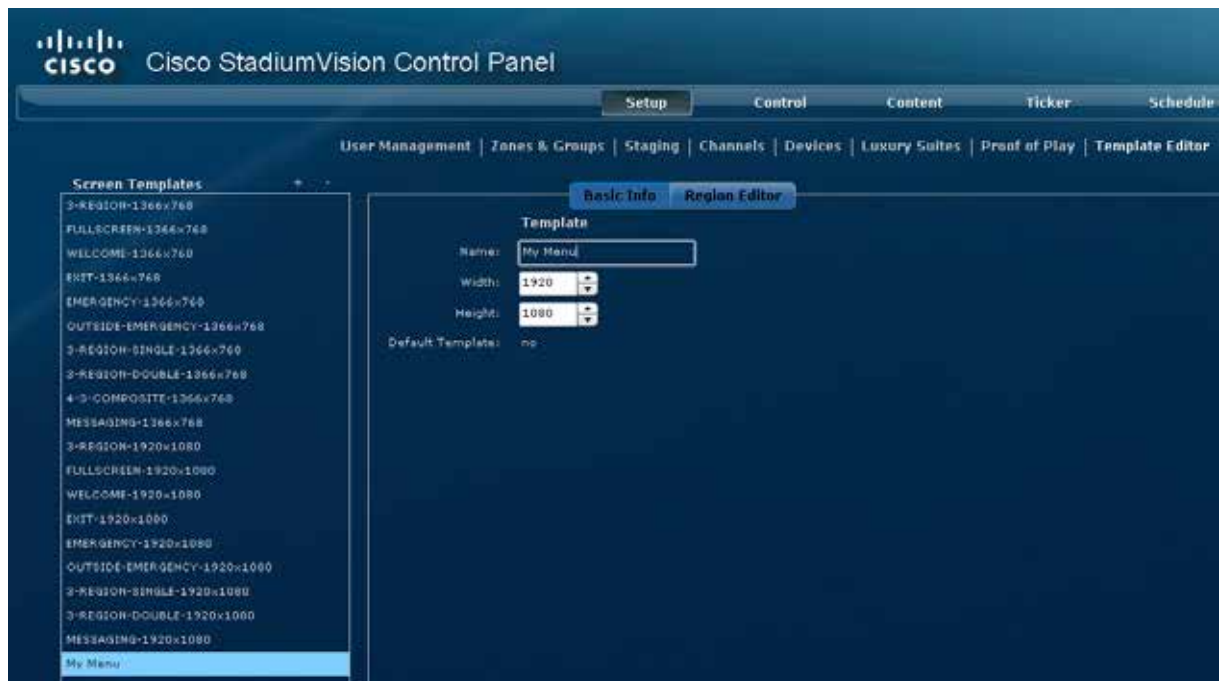
Keep the following in mind when creating a custom screen template:

- There can be only one video region per DMP/TV (always region 1).
- Regions can be used only for video or graphic content--not both. This is fixed for each screen template.
- For Proof of Play, you can have only one region with an ad playlist.
- For the DMP 4310G, the sum of the regions should not exceed 1920 x 1080, unless you are using overlay, in which case you could have two regions that are both 1920 x 1080. For the DMP 4305G, the sum of the regions should not exceed 1366 x 768 (the DMP 4305G does not support overlaid graphics).
- Up to five regions are supported for each screen layout (e.g., a 5-region screen layout). A variable number is supported, but more than 5 will cause degradation.
- When creating custom templates, avoid the following:
  - multiple video regions
  - overlapping regions (unless you are using overlay)
  - too many regions causing performance problems

## Creating a Custom Screen Template

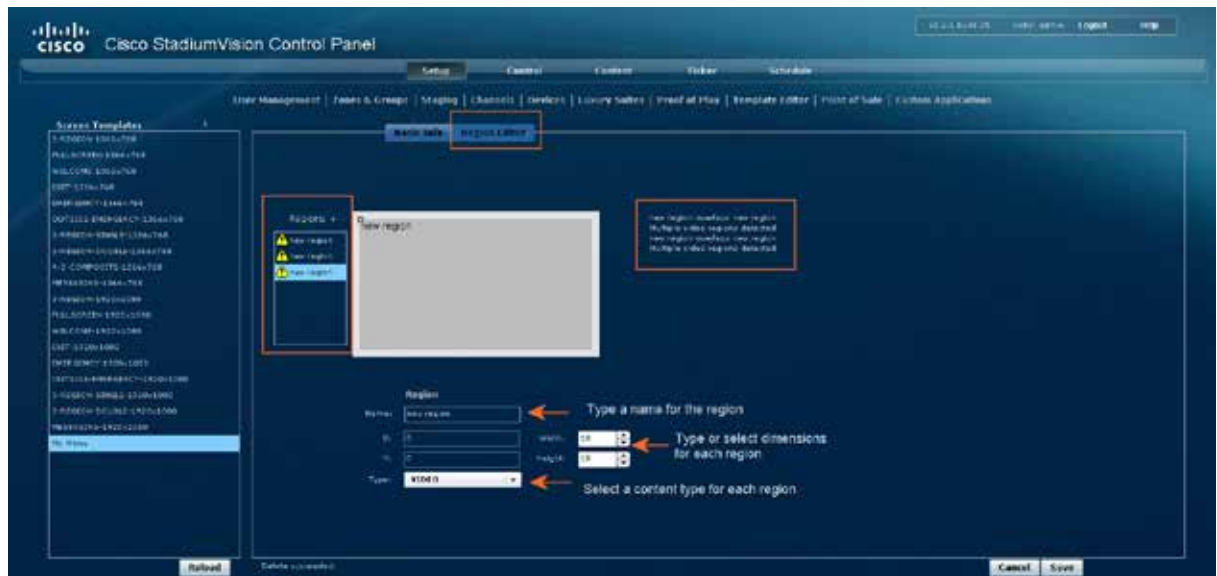
1. On the Control Panel, click **Setup > Template Editor**. The Template Editor screen displays.
2. Click the “+” above the Screen Templates list.
3. In the Basic Info screen, type a name for the new screen template and specify the dimensions for width and height. They should correspond to the display resolution supported on the DMP (1920x1080 or 1366x768).

Figure 2. Specifying the Name and Dimensions for a Screen Template



4. Click the **Region Editor** tab. Initially, just one region will displayed on the Region Editor screen.

Figure 3. Region Editor Screen



5. Begin building a new template as follows:

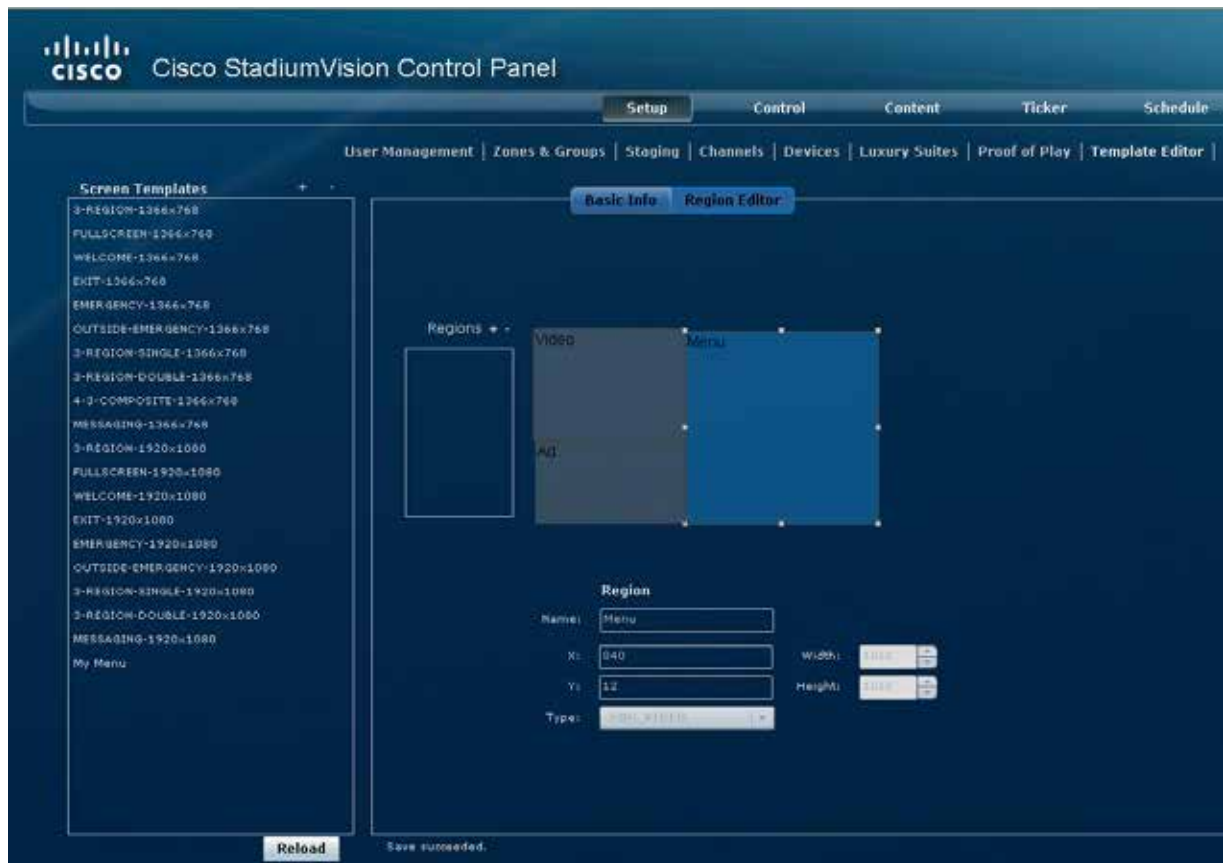
- a. Click the plus + sign next to the Regions box to add new regions for the template. You can add up to 5 regions.
- b. Select each new region from the Regions list and assign a name, dimensions, and, content type.

When you are satisfied with the region arrangement for the template, click **Save**.

6. Keep the following in mind:

- When sizing a region, you can use your mouse to grab the small handles of the region box and then drag the box to the desired region size. This method is not as precise as simply typing or selecting the region sizes from the width and height drop down boxes.
- You can click and drag on a region to move it around in the Region editor.
- If you specify a region size that overlaps with another region or is outside the allowable area, an error message will display to the right of the region screen.
- You can have only one video region.
- Although the available content types are NON-VIDEO, VIDEO, FULL SCREEN VIDEO, and WINDOWED VIDEO, SV Director makes no distinction among the three types of video settings. They are functionally identical so you can just choose VIDEO.
- For Proof of Play, you can have only one region with an ad playlist.

Figure 4. Using the Region Editor to Create a Custom Template



## Modifying a Custom Screen Template

Once you have created a custom screen template, you can modify the regions as follows.

Select the screen template from the list of screen templates.

1. Click the **Region Editor** tab.
2. Click on the screen template region you want to modify.
3. Change the settings for the screen template region. If desired, add more regions to the custom screen template.
4. Click **Save**.

## Deleting a Region from a Custom Screen Template

1. Select the screen template from the list of screen templates.
2. Click the **Region Editor** tab.
3. Click on the screen template region you want to delete.



4. Click the “-“ button on the Region Editor screen. The region will be removed from the screen template.

## Deleting a Custom Template

1. Select the screen template from the list of screen templates.
2. Click the “-“ button above the Screen Templates list. The screen template will be removed from the list of screen templates.

## Overlay Screen Templates

The DMP 4310G supports graphics with transparency/opacity allowing a non-video region to overlap a video region. This overlay feature can be full screen or assigned to any region. Refer to Figure 5.

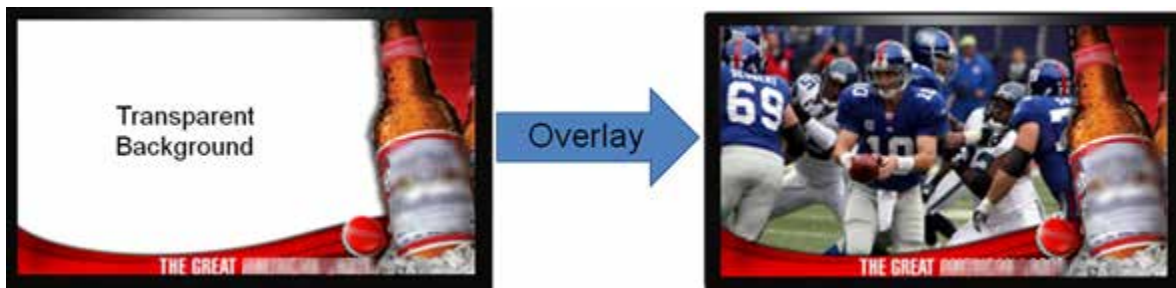
Figure 5. Example of an Overlay Template



Using the overlay feature you can display:

- A full-screen video region with a full-screen non-video content region overlaid on top.
- A brand/graphic overlaid in a small region of the screen.
- A ghosted brand/graphic such as a transparent logo where some of the colors in the logo are transparent and others are not.

Figure 6. Overlay screen templates



## Content Creation for Overlay Graphics

The DMP 4310G uses the alpha-channel of the graphics plane (PNG, SWF file types). Therefore, content creators can use the alpha-channel to allow the background video to show through.

Transparency is supported by use of chroma-keying (where the background video can be seen through a particular color in the graphics).

If you plan to use the overlay feature, consider that that JPG files have no transparency while PNG files have transparency. When you create the PNG file, you must make the pixels transparent for the full-size flash region.

When using overlays, you may not want to mask too much of the video feed. Therefore, it is recommended that you make the video region slightly smaller than full screen (though large enough to fill the transparent area).

**Note:** The Global MIB Variable on the DMP needs to be changed to Color Key “Off” or you will not be able to create graphics with 00 Black (R:0 G:0 B:0) or anything black will appear transparent.

Figure 7. Overlay Template Specifications



Figure 8. Overlay Template Specifications



## Creating an Overlay Screen Template

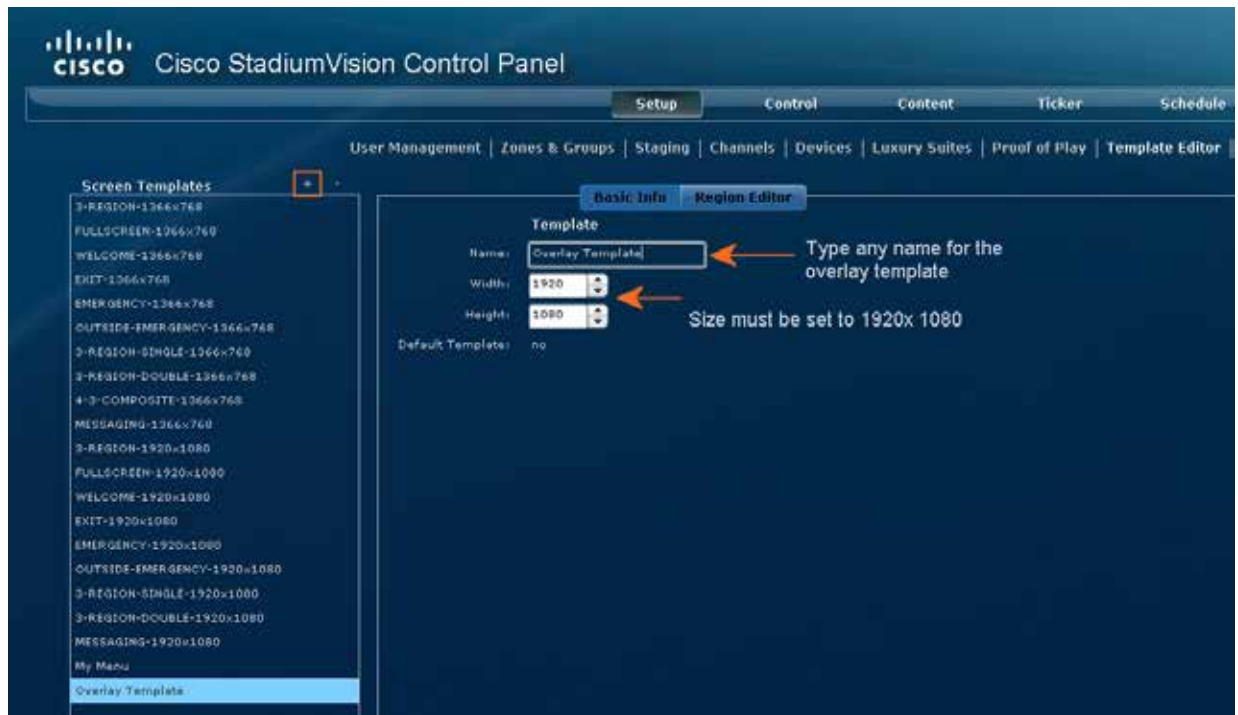
With overlay screen templates, regions are best thought of as a layer. The layers may overlap and each layer may have areas that are transparent. You typically have a full-screen video region and a full-screen overlay region which is non-video. The regions are ordered such that Region 1 displays at the top of the order in the region list. This is important as the screens are 'drawn' according to the order of the Video and Overlay regions. The screens display in the order of the regions.

**Note:** The overlay screen template feature will only work correctly on a DMP 4310G; it is not supported for the DMP 4305G.

To create an overlay screen template:

1. On the Control Panel, click **Setup > Template Editor**. The Template Editor screen displays.
2. Select the plus (+) above the Screen Templates list to add a new template.
3. Click the **Basic Info** tab and enter the information shown in Figure 9.

Figure 9. Specifying Basic Info for a New Overlay Template



3. Click the **Region Editor** tab.
4. Begin building the overlay template as follows:
  - a. Click the Plus + sign next to the Regions box to add new regions for the overlay template. You can add up to 5 regions.
  - b. For each region, specify values for the X and Y origin where:  
X = how many pixels to indent the content from the left side of the screen  
Y = how many pixels to indent the content from the top of the screen.
  - c. For full screen content, leave these values at zero. You can also set the X and Y values by dragging the resize handles for each region. The width and height settings should remain at 1920x1080. Handle dragging is not precise. As a best practice, manually enter values for the X and Y coordinates.
  - d. Select a content type for the new region from the Type drop down box.
5. When you are satisfied with the overlay screen template dimensions, click **Save**.
6. Keep the following in mind:
  - Overlay screen templates are not supported on the DMP 4305G.
  - You can have only one video region.
  - Although the available content types are NON-VIDEO, VIDEO, FULL SCREEN VIDEO, and WINDOWED VIDEO, SV Director makes no distinction among the three types of video settings. They are functionally identical so you can just choose VIDEO.